



QUARTO
QE
131
A114
1874
Atlas

Atlas accompanying reports of Missouri Geological Survey, 1874

Small
1874
576

2

ACCOMPANYING REPORTS OF

MISSOURI GEOLOGICAL SURVEY,

1874.

C. C. BROADHEAD, State Geologist.

THE LIBRARY
BRIGHAM YOUNG UNIVERSITY
PROVO, UTAH

MISSOURI GEOLOGICAL SURVEY CEDAR COUNTY

BY

G. C. BROADHEAD.

Drawn by
T. J. CALDWELL.

ST. CLAIR CO.

- | | | | |
|-----|-----------------------|---|-------------------|
| Fe | Coal Measures | — | Coal |
| FF | Ferruginous Sandstone | + | Mine |
| Fh | Koolesburg | ⌋ | Iron Ore |
| Fi | Kucinital | x | Mill |
| Fhl | Chouteau Group | o | Chalybeate Spring |
| Fv | Magnesian Limestone | o | Spring |



T30

T35

T34

T33

THE LIBRARY
BRIGHAM YOUNG UNIVERSITY
PROVO, UTAH

MISSOURI GEOLOGICAL SURVEY BARTON COUNTY

by
G. C. BROADHEAD.

Drawn by
T. J. CALDWELL

Coal Measures

• Lower Carboniferous - Keokuk Group

R. 33

R. 32

R. 31

R. 30

R. 29



West. Boundary Line of the State of Missouri

MISSOURI
GEOLOGICAL SURVEY
VERNON COUNTY

BY
G. C. BRONSTEAD.

Drawn by
T. J. CALDWELL.

— Coal Measures
— Lower Carboniferous
R 31

R 33

R 32

R 30

R 29



T 38

T 37

T 36

T 35

T 34

MISSOURI GEOLOGICAL SURVEY BATES COUNTY

BY
G. C. BRONDFIELD.

Drawn by
T. J. CALDWELL.

R. 33

R. 32

R. 31

R. 30

R. 29



State of Missouri
West Boundary Line of

T.42

T.41

T.40

T.39

T.38

MISSOURI
GEOLOGICAL SURVEY
HOWARD COUNTY

BY

G.C. BROADHEAD & C. NORWOOD.

Drawn by
T.J. CALDWELL.

T.52

T.51

T.50

T.49

MISSOURI GEOLOGICAL SURVEY

G.C. BROADHEAD,
STATE GEOLOGIST.

PART OF NORTHERN MISSOURI

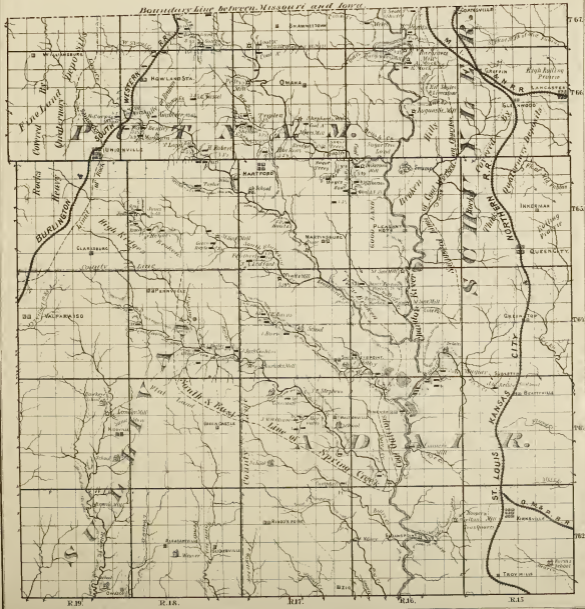
BY

G.C. BROADHEAD & C. L. DORWOOD.

Drawn by

T. J. CALDWELL.

Boundary line between Missouri and Iowa

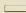
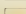





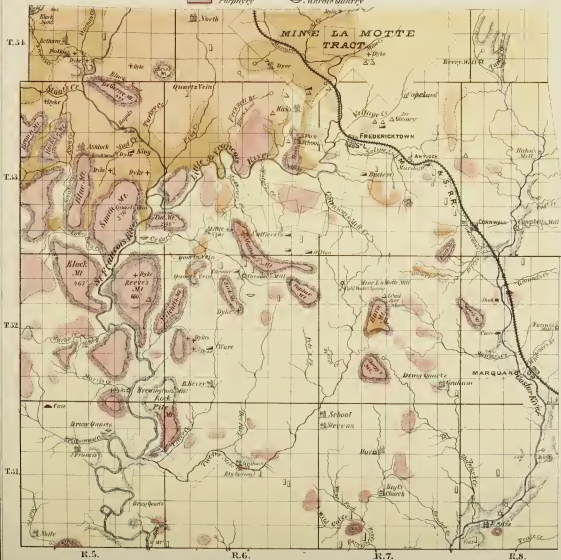
MISSOURI
GEOLOGICAL SURVEY.
G. C. BROADHEAD,
STATE GEOLOGIST.
MADISON COUNTY

BY
C. L. DORWOOD, & G. C. BROADHEAD

Drawn by
T. J. CALDWELL

Explanations.

	Quaternary	+ Trap Dyke
	Chert & Limestone	□ Iron
	Sandstone	△ Lead
	Granite	▲ Copper
	Porphyry	◊ Marble Quarry



GEOLOGICAL MAP OF JASPER COUNTY
 BY
C. C. BROADHEAD, STATE GEOLOGIST,
 & **C. L. VORWOOD, ASST. GEOLOGIST,**

LEAD REGION OF JASPER AND NEWTON COUNTIES

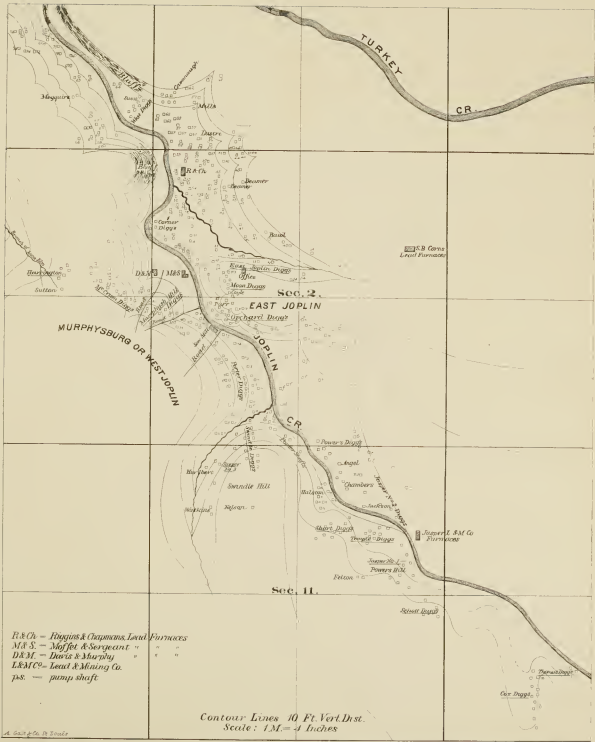
BY
A. SCHMIDT } ASST. GEOLOGISTS.
A. LEONHARD }

Drawn by T. A. Caldwell

Explanations:

- Coal Measures
- Lower Carboniferous
- Lead Ore
- Zinc Ore
- G. Mill





SKETCH OF THE JOPLIN LEAD DISTRICT, T. 27 N. R. 33 W.

MISSOURI GEOLOGICAL SURVEY

G. C. BROADHEAD,
STATE GEOLOGIST.

MAP OF THE LEAD REGION OF CENTRAL MISSOURI

BY A. SCHMIDT

Drawn by T. Caldwell

Explanations:

- | | |
|---|--|
| <ul style="list-style-type: none"> <i>P</i> Permian Limestone <i>C</i> Chouteau <i>S</i> Sarcophagid Sandstone <i>F</i> Second May Limestone <i>Jw</i> Sandstone <i>F</i> Third | <ul style="list-style-type: none"> <i>F</i> Third May Limestone ▲ Lead □ Iron Furnace ○ Furnace — Cont. <i>F</i> Fourth May Limestone |
|---|--|



MISSOURI
GEOLOGICAL SURVEY,
MAP OF
GRANBY MINES
NEWTON COUNTY

SURVEYED BY G. W. BEAN, 1881-1882. REVISED 1873

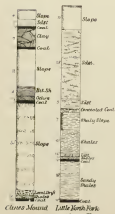
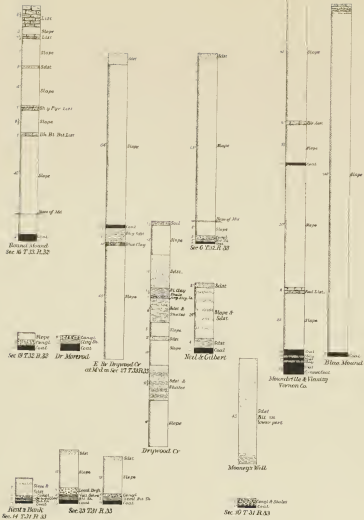
SCALE 300 FT. = 1 IN.

EXPLANATIONS.

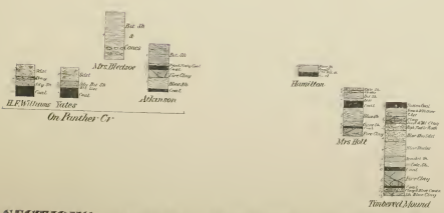
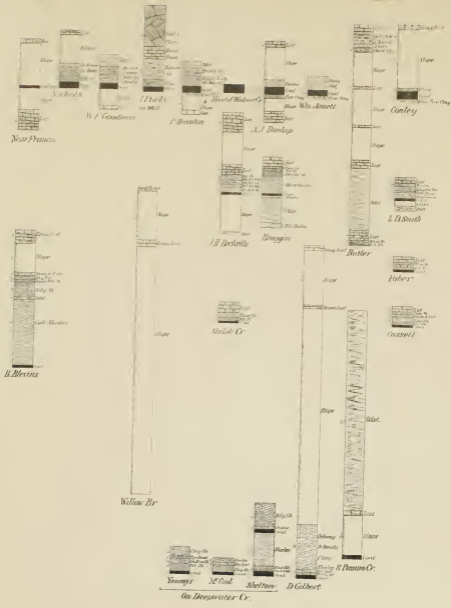
- Middle Silurian beds of lower part of
- Middle Silurian beds of upper part of
- Middle Silurian beds of lower part of
- Middle Silurian beds of upper part of
- Middle Silurian beds of lower part of
- Middle Silurian beds of upper part of

The numbers are those of the shafts and are not to be taken as indicating the relative positions of the shafts to each other.



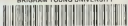


SECTIONS IN BARTON COUNTY.



SECTIONS IN BATES AND VERNON COUNTIES

BRIGHAM YOUNG UNIVERSITY



3 1197 23334 0337

