

TABLE OF CONTENTS

1- scale print of MK II sten

1- scale print of MP-40

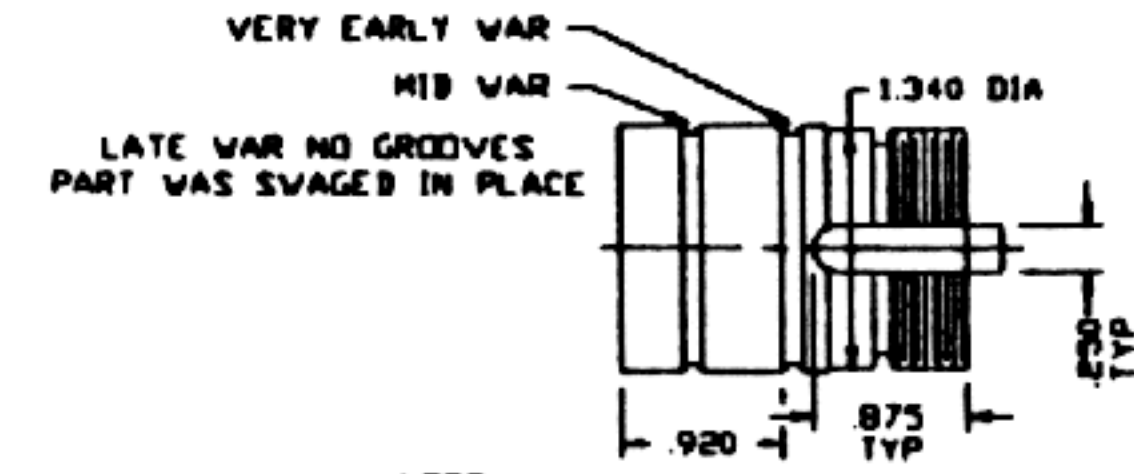
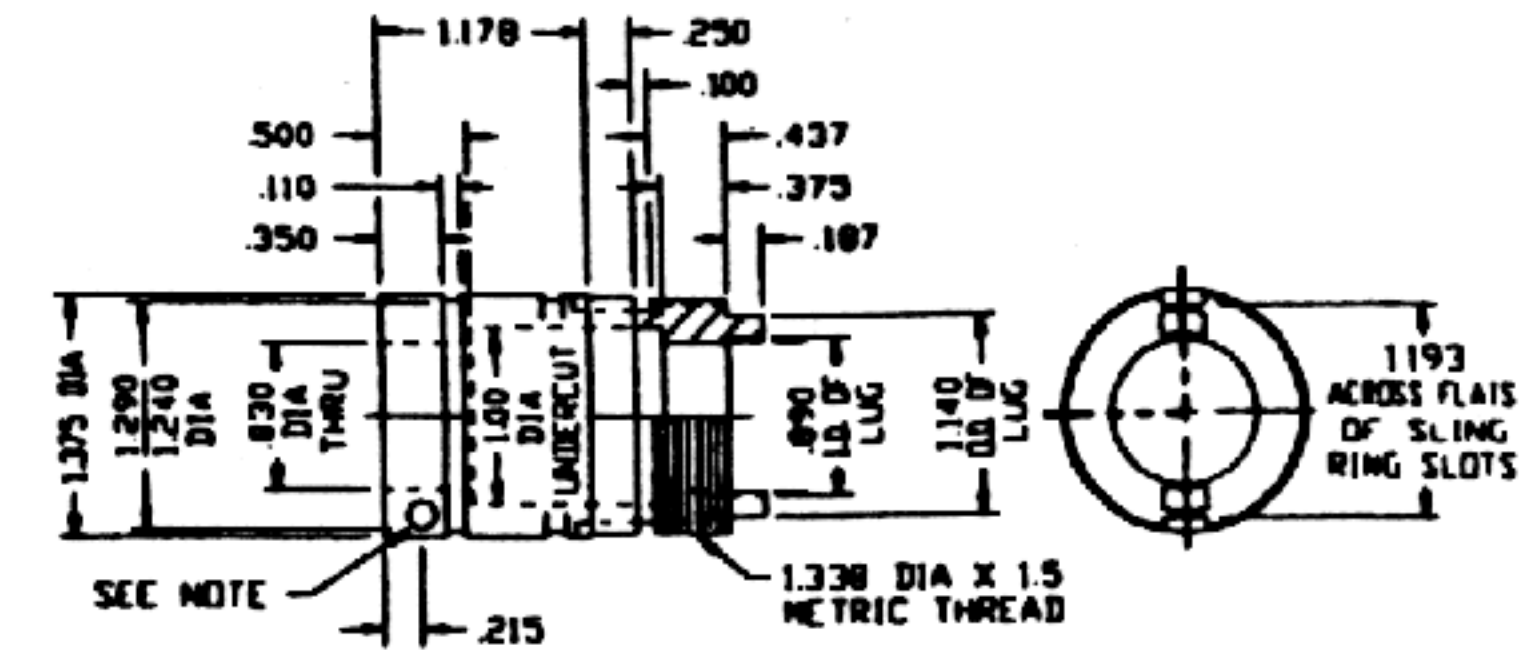
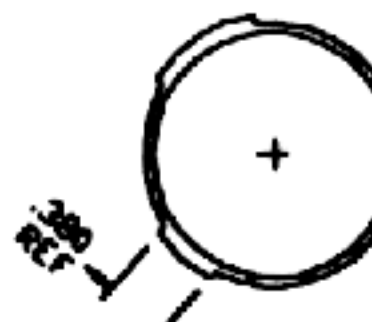
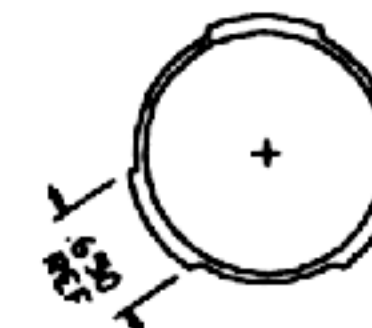
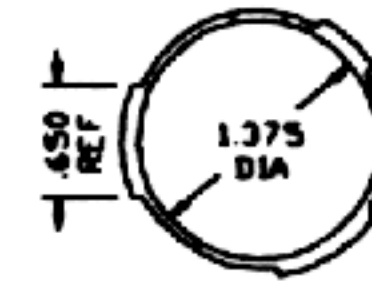
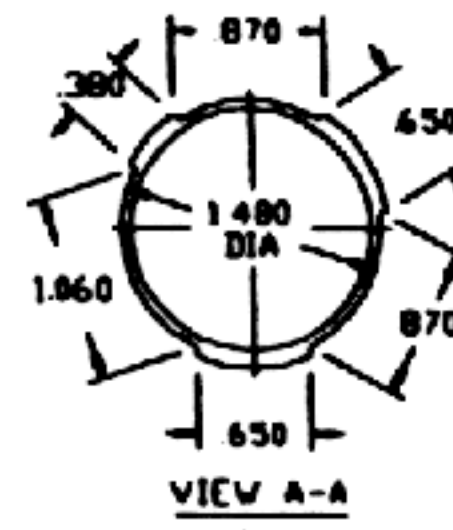
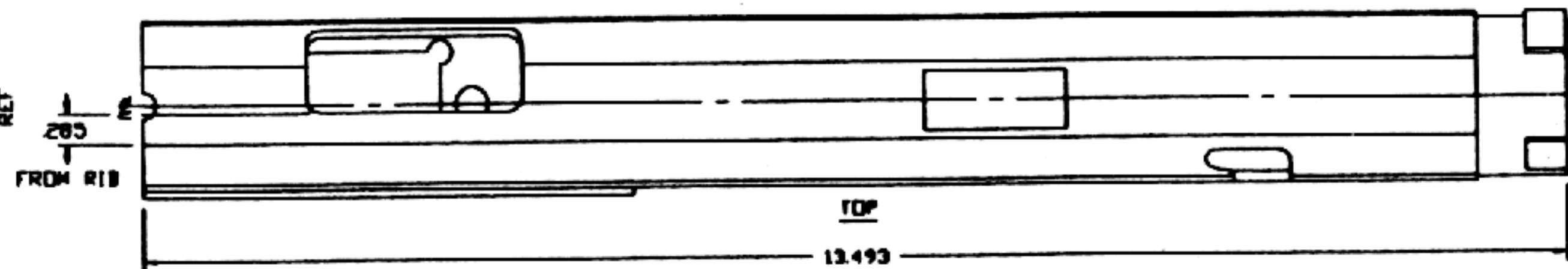
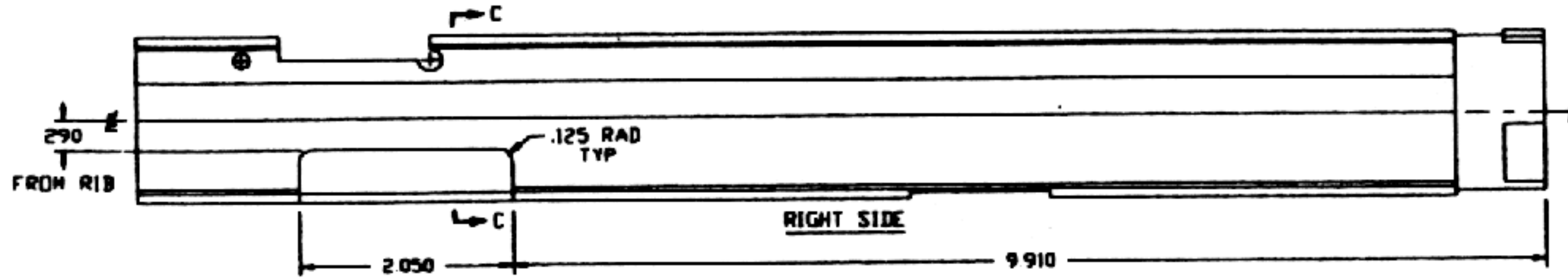
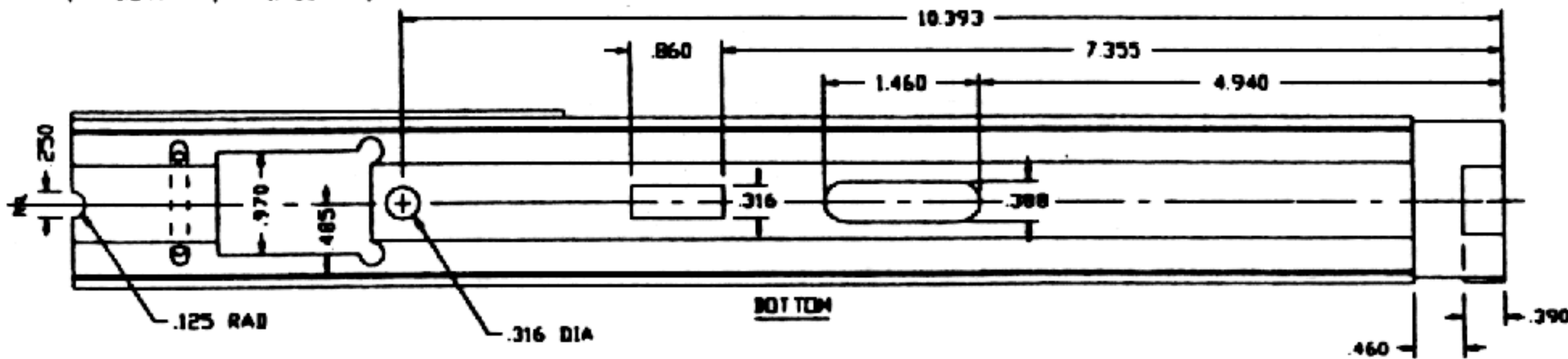
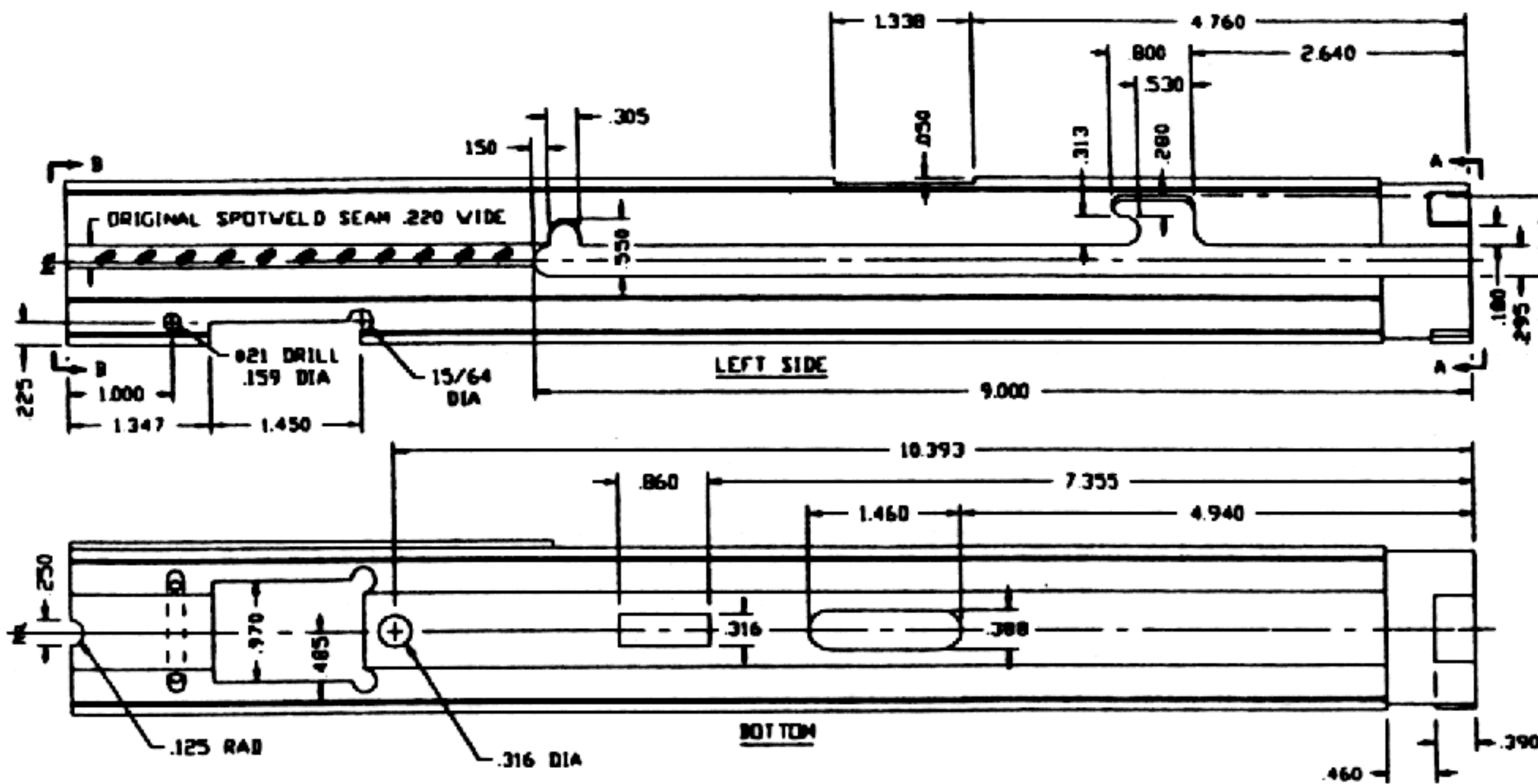
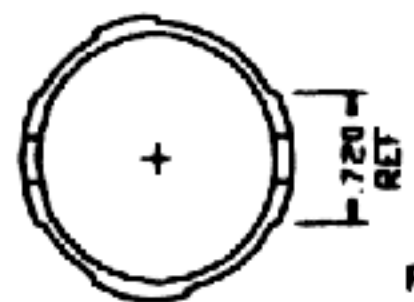
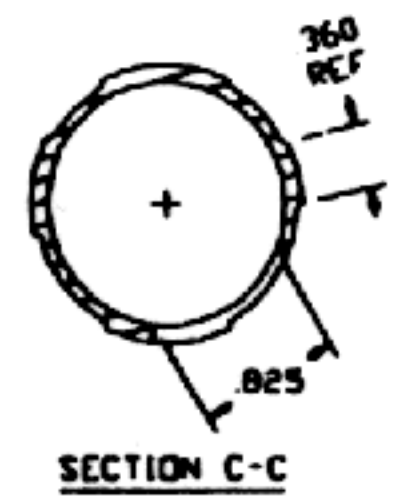
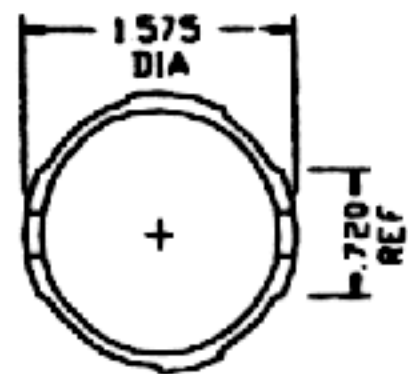
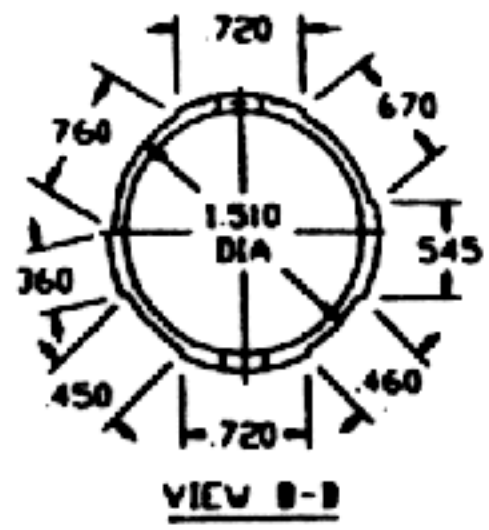
1- scale print of MK II sten compact

1- scale print of Yugoslav 56

1- scale print of BMG 50

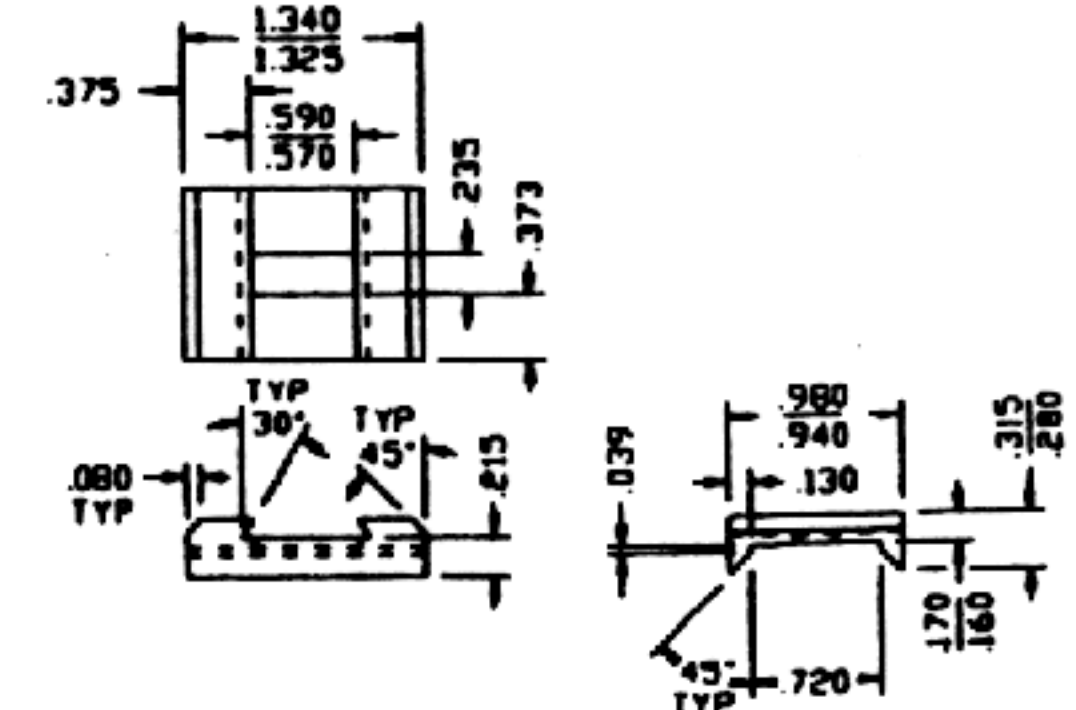
right and left sides

PARTS SUPPLIERS ON LAST PAGE

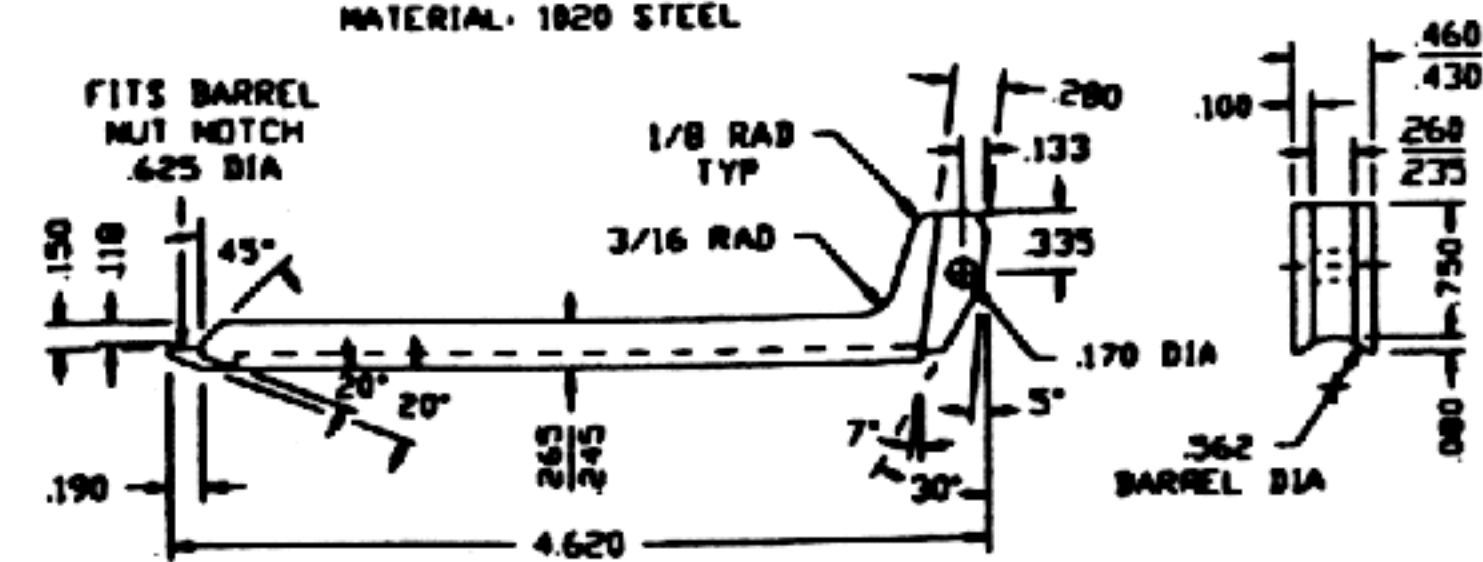


NOTE:
HOLE IN MAGAZINE HOUSING IS THE FACTOR WHEN ASSEMBLED CROSS HOLE CHECKS ABOUT .215 THIS IS THE LAST HOLE TO DRILL AND AT ASSEMBLY.

BARREL BUSHING
MATERIAL: 1020 STEEL



REAR SIGHT BASE
MATERIAL: 1020 STEEL



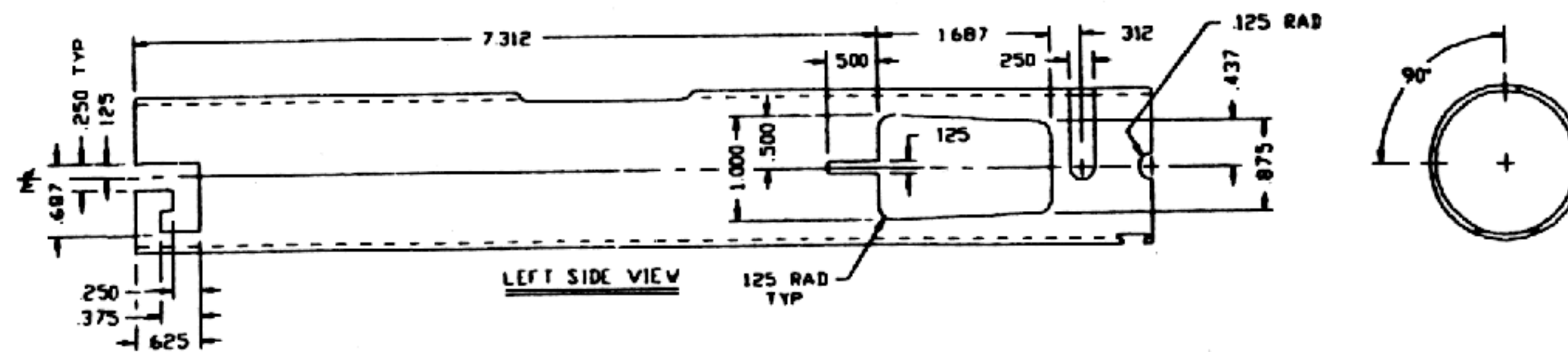
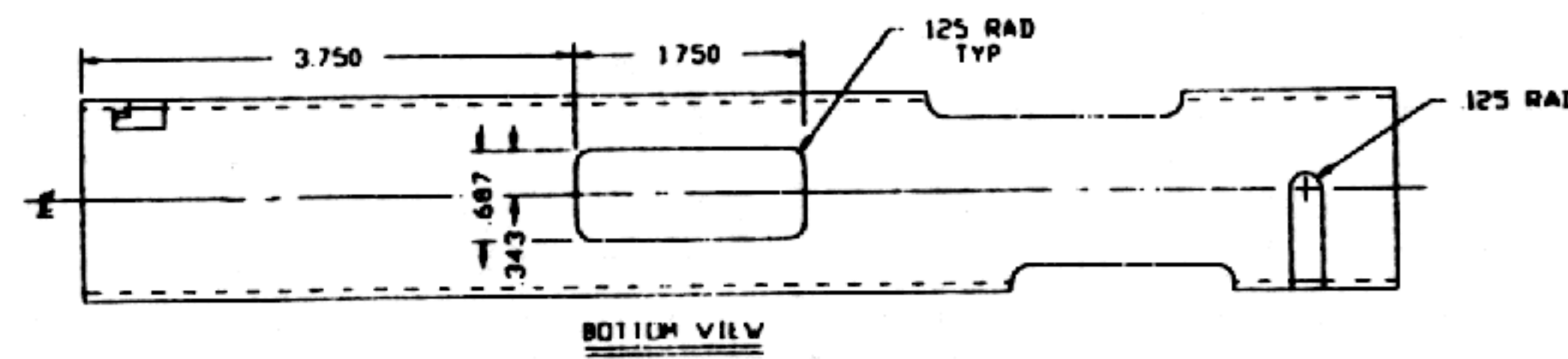
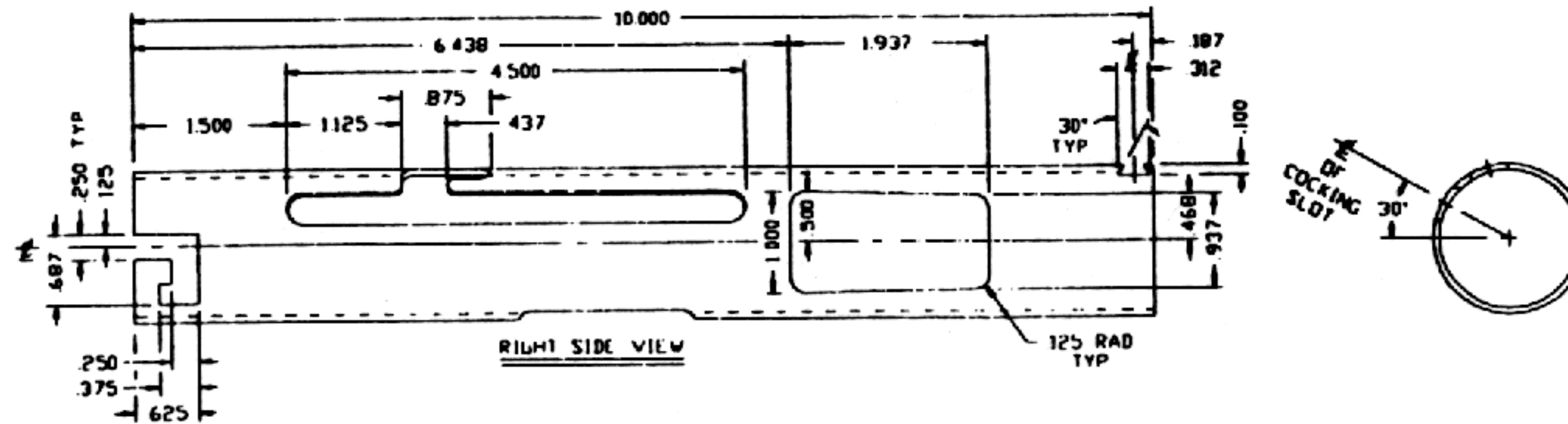
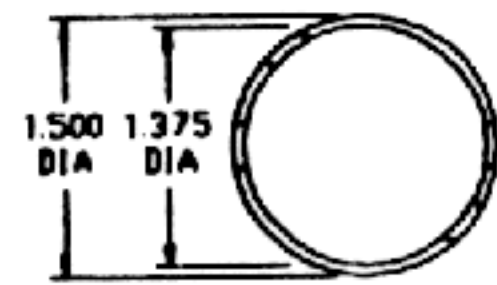
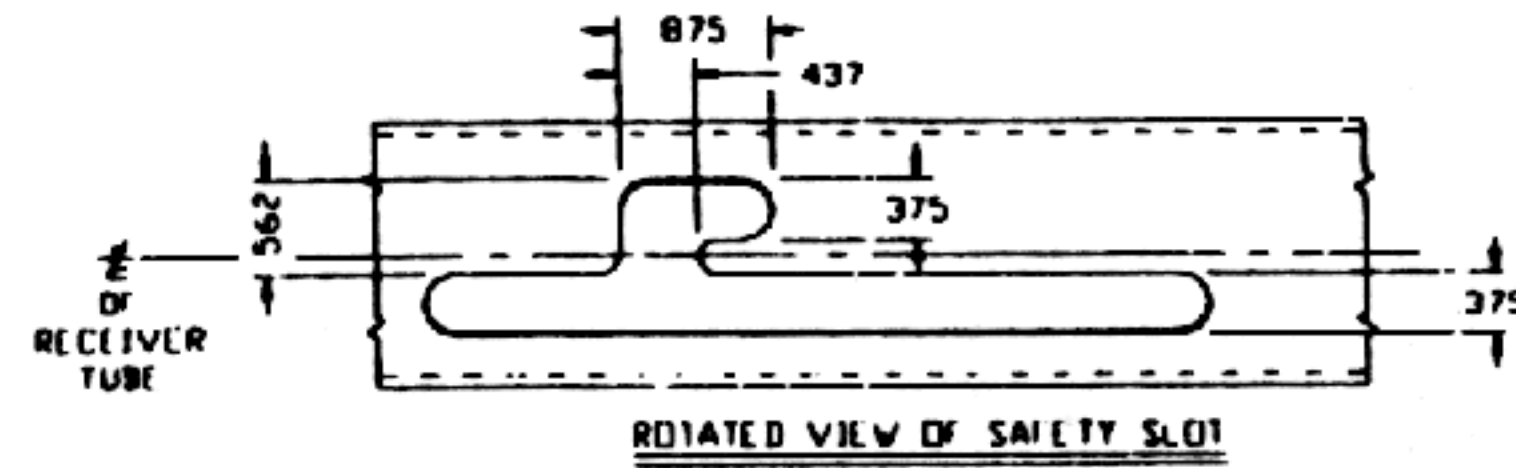
EARLY GUNS MATERIAL WAS ALUMINUM FEW WERE STAMPED SHEET STEEL LATE GUNS MATERIAL WAS BAKELITE OR SIMILAR
RESTING BAR
MATERIAL: 6061-T6 ALUMINUM

NOTES:
1. MATERIAL - 1 3/8 O.D. X 1 3/8 I.D. DOM. STEEL TUBE
2. FINISH - BLUE

RESTRICTED MATERIAL

CONFIDENTIAL

SCALE	FULL	MATERIAL	SEE NOTE 1	DATE	TOLERANCES	
DWG			SEE NOTE 2	DATE	FRS ± .015 H ± .010 K ± .010 MILES ± .010	
TITLE	MP-48 RECEIVER				REV.	

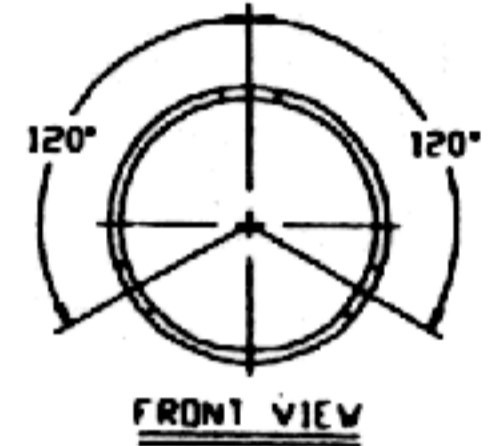
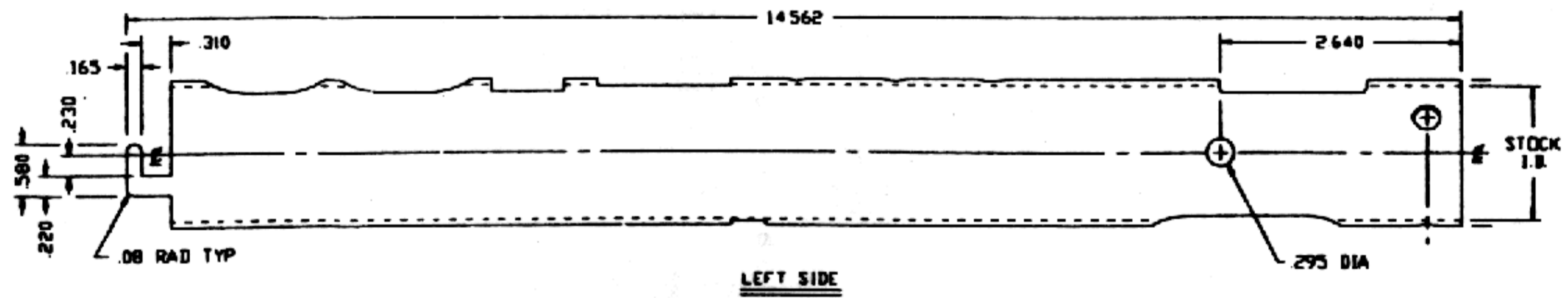
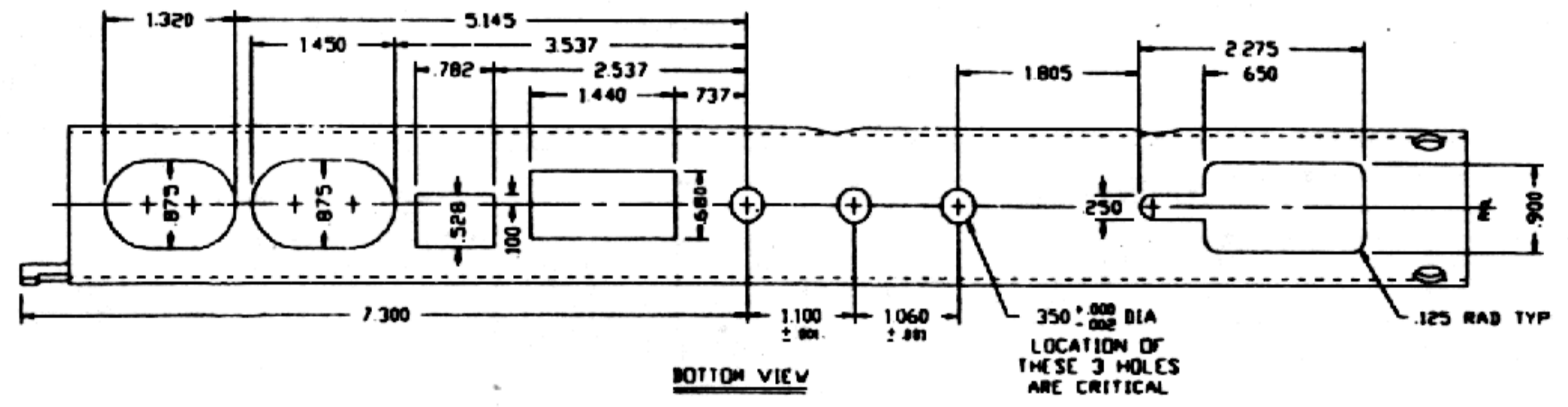
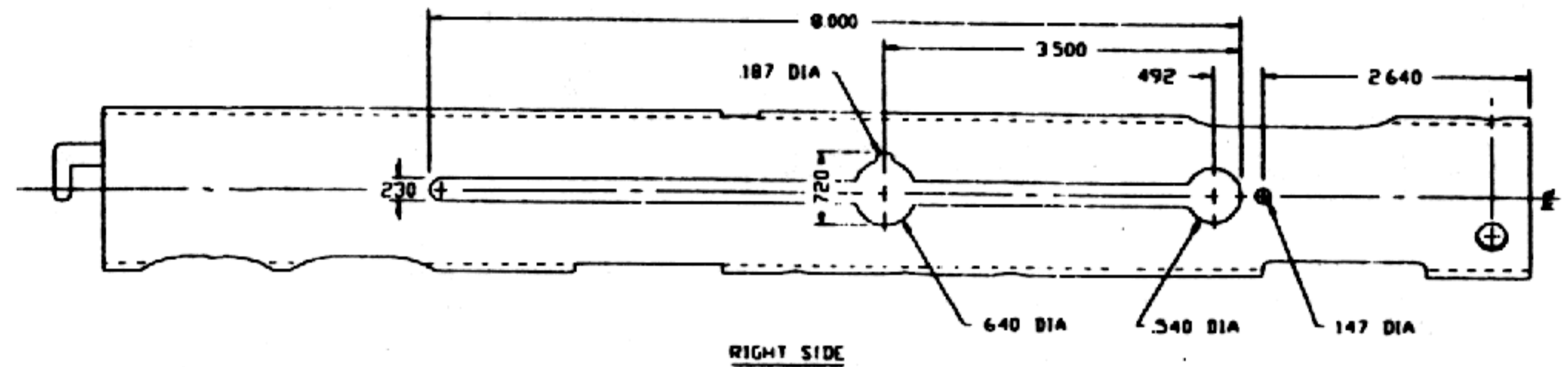
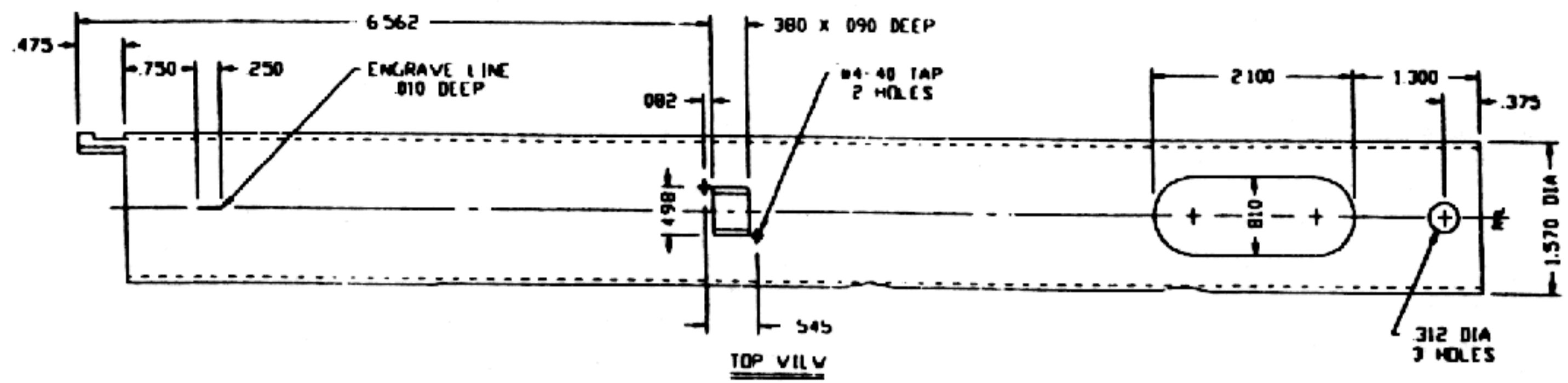


RESTRICTED MATERIAL

CONFIDENTIAL

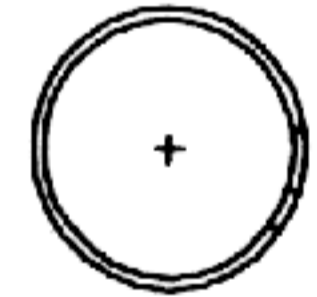
- NOTES:
 1. MATERIAL - MILD STEEL SEAMLESS, DRAWN OVER MANDREL
 1.500 O.D. X 1.375 I.D. (.058-.062 WALL)
 2. FINISH - PAINT BLACK

SCALE: FULL	MATERIAL: SEE NOTE 1	DATE	TECHNICAL
DATE	FINISH: SEE NOTE 2	DATE	REV. : 01
TITLE: STEN MK-II RECEIVER (COMPACT MODEL)			REV. : 02
			REV. : 03
			REV. : 04
			REV. : 05
			REV. : 06
			REV. : 07
			REV. : 08
			REV. : 09
			REV. : 10



METHOD OF ATTACHING
BARREL BUSHING
DRILL 312 DIA HOLES AT 120°
POSITIONED 375 FROM FRONT
AND ELECTRIC WELD
ALTERNATE FOR NON-GUN
COLD SOLDER OR SILVER SOLDER

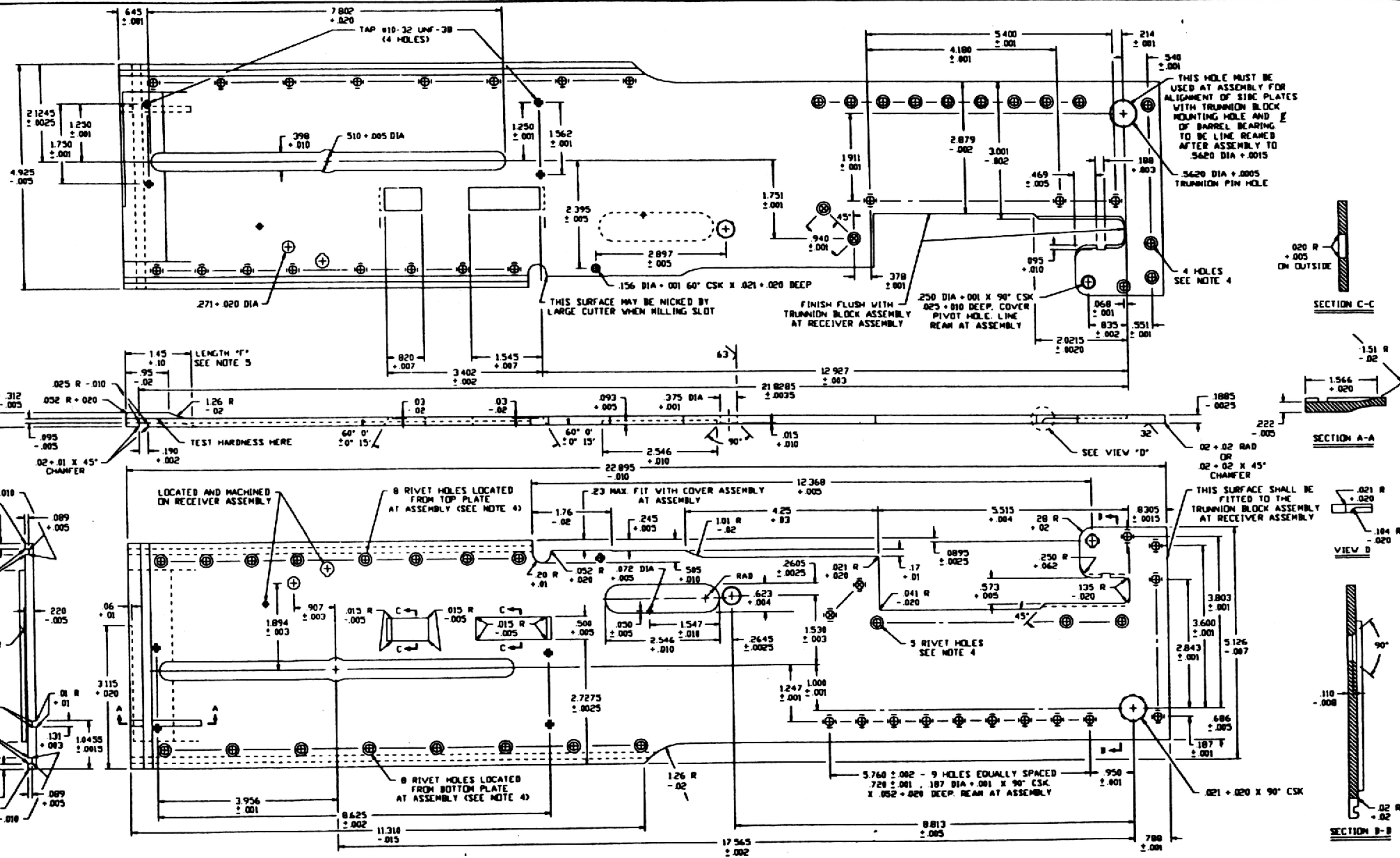
NOTES
1 MATERIAL- 1.625 O.D X .093 WALL D.O.M. STEEL TUBE
2 FINISH- BLUE
3 CALIBER- 7.62 TOKAREV OR 7.63 MAUSER



RESTRICTED
MATERIAL

CONFIDENTIAL

SCALE: FULL	MATERIAL: SEE NOTE 1	DATE:	TOLERANCES: DECIMALS ± .005 FRACTIONS ± .001
DATE:	FINISH: SEE NOTE 2	REV.:	ANGLES ± .5°
TITLE: YUGOSLAV 56 RECEIVER			NO.



NOTES
 1. FINISH-125 EXCEPT AS NOTED
 MODEL 50 - POLICE MACHINE GUN BLUE
 MODEL 60 - SEMI-AUTO CIVILIAN BLUE
 MODEL 50 - MILITARY MACHINE GUN PARKERIZE
 MODEL 55 - PARATROOPER MACHINE GUN PARKERIZE
 2. MATERIAL - STEEL, ASTM A331, 4340 OR 4130 OR 4140.
 3. BREAK EDGES .003 ± .012 UNLESS OTHERWISE SPECIFIED.

4. ALL RIVET HOLES ARE .187 DIA + .001 (90° - 1° CSK .052 ± .020 DEEP) REAM AT ASSEMBLY UNLESS OTHERWISE SPECIFIED.
 5. HEAT TREATMENT - HEAT LENGTH "T" TO 1400° - 1500°F. OIL QUENCH TEMPER AT APPROX 800° TO HARDNESS SPECIFIED.
 6. MIL-V-13055 APPLIES
 7. THE CLEARANCE CUT CONTROLLED BY DIMENSIONS 4.25 ± .03 LENGTH, .17 ± .01 DEPTH AND 1.01 R - .02 IS OPTIONAL WITH MANUFACTURER TO MAKE THE LEFT AND RIGHT HAND SIDE PLATES ALIKE AS TO THIS CUT.

CONFIDENTIAL

RESTRICTED MATERIAL

WORLD FULL	DATE: SEE NOTE 2	CIB	FILE NUMBER
PAN	FORM: SEE NOTE 1	DATE	REV. 1
TITLE: BMG50 LEFT HAND SIDE PLATE	REV.	NO.	ANGLE: 8°

LIST OF PARTS SUPPLIERS

**wholesale guns and ammo, inc.
232 blydenburgh rd.
central islip, NY 11722**

www.gunsnammo.com

**international military antiques , inc.
p.o.box 256 millington ,NJ 07946**

www.ima-usa.com

**inter ordnance of america l.p.
3305 westwood industrial drive
monroe , NC 28110**

www.inter-ordnance.com

**sarco , inc.
323 union st. p.o. box 98
stirling , NJ 07980**

**jeffs shooters supply
p.o.box 1054 trussville , AL 35173**

**rpb industries
p.o.box 367 avondale est. GA 30002**