

ROSSI

FIREARMS

Owner's Manual

for the Rossi Single Barrel Shotgun



READ CAREFULLY BEFORE USING YOUR FIREARM

This Booklet

The safety warnings in this booklet are important. By understanding the dangers inherent in the use of any firearm, and by taking the precautions described herein, you can enjoy complete safety in the use of your Rossi shotgun. Failure to heed any of these warnings may result in serious injury to you or others, as well as severe damage to the firearm or other property.

Dangerous Weapons

SHOTGUNS are classified as FIREARMS or DANGEROUS WEAPONS and are sold by us with the specific understanding that we are not responsible in any manner whatsoever for their improper or negligent handling or resale under local laws and regulations.

BRAZTECH shall not be responsible in any manner whatsoever for malfunctioning of the firearm, or for physical injury or property damage, resulting in whole or in part from (1) criminal or negligent discharge, (2) improper or careless handling, (3) unauthorized modifications, (4) defective, improper hand-loaded, or reloaded ammunition, (5) neglect, or (6) other influences beyond our direct and immediate control. This limitation applies regardless of whether liability is asserted on the basis of contract, negligence or strict liability (including any failure to warn). Under no circumstance shall BrazTech be liable for incidental or consequential damages, such as loss of use of property, commercial loss and loss of earnings or profits.

Safety Warnings

Not Just For Beginners

Regardless of your familiarity or experience with firearms, don't assume that you have no need to study this manual.

The safe handling of firearms requires specialized training, discipline and caution. Firearms, by their nature and intended function, are deadly instruments. Accidental death or serious injury can result if they are handled improperly or carelessly.

Firearms rarely cause accidents. Firearms accidents almost always are caused by a failure to obey the basic rules of gun safety. Unfortunately, experienced shooters are found to violate these rules as frequently as beginners. Thus, the basics of safe firearms handling cannot be repeated too often. Read, re-read and memorize the basic principles of firearms safety until they become second nature: habits that you don't forget.

If you have any question about your knowledge or ability to use this or any other firearm with complete safety you should seek supervised instruction. Personalized instruction is often available from gun dealers, gun clubs, state hunter safety programs or police departments in the United States. If none of these sources is accessible, write to the National Rifle Association, Washington, D.C. 20036. THEY WILL ASSIST YOU.

A person with a gun in his possession has a full-time responsibility. He must KNOW how to keep and use his firearm safely, and then must always TAKE the precautions necessary - all of them. He cannot guess; he cannot forget. This responsibility is his alone. It cannot be passed off to someone else.

Remember: no gun can be made accident-proof. A gun is just a machine, with no judgement of its own. It responds to your actions, whether wise or foolish. The only truly effective safety device is the mind of a cautious shooter who never forgets that a moment's carelessness can produce permanent tragedy.

Guns Are Not Alike

Many makes and models of firearms might LOOK nearly the same. However, they differ widely in design and operation, and in the location and function of various controls.

Study this manual thoroughly. Educate yourself on the characteristics and operation of your particular firearm before attempting to handle it. Do not permit others to handle it, unless they also have done so.

You should have an instruction manual for every firearm you own. If you do not, write the manufacturer and obtain one. Most manufacturers will gladly send you one free. If for any reason a manual is not available, visit your public library. Many books have been published which contain detailed information on obsolete or discontinued firearms.

Your knowledge can prevent injuries.

The Rossi shotgun was designed and is made to offer the maximum of safety when correctly used. However, as with any other weapon, it is not foolproof, and may become very dangerous if the following basic recommendations are not RIGIDLY observed:

Attention

1. **Never, never-ever** point any gun, loaded or unloaded, at anything you do not intend to shoot.
2. **Always** treat every gun as if it were loaded.
3. Get instruction from a competent firearms instructor before using any gun.
4. The safety is only a mechanical device, not a substitute for common sense.
5. Keep your finger off the trigger until you are actually aiming at the target ready to shoot.
6. Be certain the gun is unloaded before cleaning.
7. Always empty guns before entering a place where there are people.
8. Never leave a loaded gun unattended.

9. Store guns and ammunition separately, beyond the reach of children.
10. Don't test the safety by pulling the trigger while the safety is on unless you are absolutely sure the gun is empty and you are pointing away from everyone.
11. Be sure of your target and backstop before you shoot.
12. Guns and alcohol or drugs don't mix.
13. Never pull a gun towards you by the muzzle. Don't climb a tree or cross a fence with a loaded gun.
14. Load and unload with the muzzle pointed in a safe direction.
15. If a gun fails to fire when the trigger is pulled, keep it pointed at the target for at least 30 seconds. Sometimes slow primer ignition will cause a "hang-fire" and the shell will go off after a short pause.
16. Never shoot at hard flat surfaces or water - shot may ricochet.
17. When receiving a gun always check that it is unloaded.
18. Never put your hand over the muzzle of a gun.
19. Check ammo to be sure it is the right size and gauge, and that it is not dented.
20. Never cock the gun until you are ready to shoot.
21. Dry firing is bad for this gun, whether the safety is engaged or not.
22. **WHILE HANDLING ANY FIREARM, NEVER ALLOW IT TO POINT AT ANY PART OF YOUR BODY OR AT ANOTHER PERSON. NO HARM SHOULD RESULT IF YOU OBEY THIS RULE, EVEN IF AN ACCIDENTAL DISCHARGE OCCURS.**
23. If there is any reason to suspect that the barrel is obstructed, immediately unload the firearm and look through the bore. It is not sufficient to merely look in the chamber.
24. Treat this gun as a precision instrument.
25. Old or reloaded ammunition may be dangerous. We recommend against using it.
26. Don't try to change your gun's trigger pull, because alteration of trigger pull usually affects sear engagement and may cause accidental discharge.

Write to us concerning any items or circumstances which might relate to your safety and the operation of our products.

Warning

Rossi shotguns were manufactured to perform properly with the original parts as designed. It is your duty to make sure any parts you buy are installed correctly and that neither replacements nor originals are altered or changed. Your gun is a complex tool with many parts that must relate correctly to other parts. Putting a gun together wrong or with modified parts can result in a damaged gun, danger and injury or death to you and others through malfunction. Always have a qualified gunsmith work on your gun.

Protect Your Eyes and Ears

Always wear adequate shooting glasses and ear plugs or “ear muff” type protectors whenever you are shooting.

Always make certain that persons close to you are similarly protected.

Unprotected eyes may be injured by powder, gas, carbon residue, lubricant, metallic particles or similar debris which may emanate occasionally from any firearm in normal use.

Without ear protection, repeated exposure to shooting noise may lead to cumulative, permanent hearing loss.



Ammunition

1. Use only high quality, original, factory-manufactured ammunition. Do not use shot shells that are dirty, wet, corroded, bent or damaged. Do not oil shot shells. Do not spray aerosol type lubricants, preservatives, or cleaners directly onto shot shells or where excess spray may flow into contact with shells. Lubricant or other foreign matter on shot shells can cause potentially dangerous ammunition malfunctions. Use only ammunition of the gauge for which your firearm is chambered. The proper gauge is permanently engraved on your firearm; never attempt to use ammunition of any other gauge. This shotgun is suitable for use of factory loaded shot shells containing steel shot.
2. The use of reloaded, “remanufactured”, hand-loaded, or other non-standard ammunition voids all warranties. Improperly loaded ammunition voids all warranties. Improperly loaded ammunition can be extremely dangerous. Severe damage to the firearm and serious injury to the shooter or to others may result. Always use ammunition that complies with the industry performance standards established by the Sporting Arms and Ammunition Manufacturers Institute, Inc., of the United States, (SAAMI) or the equivalent from other countries.
3. Firearms may be severely damaged and serious injury to the shooter or to others may result from any condition causing excessive pressure inside the chamber or barrel during firing. Excessive pressure can be caused by obstructions in the barrel, propellant powder overloads, or by the use of incorrect shot shells or defectively assembled shot shells. In addition, the use of a dirty, corroded, or damaged shot shell can lead to a burst shell case and consequent damage to the firearm and personal injury from the sudden escape of high-pressure propellant gas within the firearm’s mechanism.
4. Immediately stop shooting and check the barrel for a possible obstruction whenever:
 - You have difficulty in, or feel unusual resistance in, chambering a shot shell, or
 - A shot shell misfires (does not go off), or
 - The mechanism fails to extract a fired shot shell case, or
 - Unburned grains of propellant powder are discovered spilled in mechanism, or
 - A shot sounds weak or abnormal. In such cases it is possible that a bullet is lodged part way down the barrel. Firing a subsequent shot shell into the obstructed barrel can wreck the firearm and cause serious injury to the shooter or to bystanders.

5. Shot shells and wads can become lodged in the barrel.
 - If the shot shell has been improperly loaded without propellant powder, or if the powder fails to ignite (Ignition of the shot shell primer alone will push the shot and wad out of the shot shell case, but usually does not generate sufficient energy to expel them completely from the barrel).
6. If there is any reason to suspect that the barrel is obstructed, immediately unload the firearm and look down the bore. It is not sufficient to merely look in the chamber. Shot and/or the wad may be lodged some distance down the barrel where it cannot easily be seen.

IF THE BORE IS OBSTRUCTED, DO NOT ATTEMPT TO SHOOT IT OUT BY USING ANOTHER SHOT SHELL OR BY BLOWING IT OUT WITH A BLANK. SUCH TECHNIQUES CAN GENERATE EXCESSIVE PRESSURE, WRECK THE FIREARM AND CAUSE SERIOUS PERSONAL INJURY.

If the obstruction can be removed with a cleaning rod, clear any unburned powder grains from the bore, chamber, and mechanism before resuming shooting. If the obstruction cannot be dislodged by tapping it out with a cleaning rod, take the firearm to a gunsmith.

7. Dirt, corrosion, or other foreign matter on a shot shell can impede complete chambering and may cause the shot shell to burst upon firing. The same is true of shot shells which are damaged or deformed.
8. Do not oil shot shells, and be sure to wipe the chamber clean of any oil or preservative before commencing to shoot. Oil interferes with the friction between shot shell case and chamber wall that is necessary for safe functioning, and subjects the firearm to stress similar to that imposed by excessive pressure.
9. Use lubricants sparingly on the moving parts of your firearm. Avoid excessive spraying of any aerosol gun care product, especially where it may get on ammunition. All lubricants and aerosol spray lubricants in particular, can penetrate shot shell primers and cause misfires. Some highly penetrative lubricants can also migrate inside shot shell cases and cause deterioration of the propellant powder; on firing, the powder may not ignite. If only the primer ignites, there is danger that the shot shell may become lodged in the barrel.

Warning

Discharging firearms in poorly ventilated areas, cleaning firearms, or handling ammunition may result in exposure to lead and other substances known to cause birth defects, reproductive harm, and other serious physical injury. Have adequate ventilation at all times. Wash hands thoroughly after exposure.

Operation of Your Shotgun

Warning

This shotgun has a “transfer bar” firing mechanism. This means that when the hammer is in the fully forward (rest) position, and the trigger is released, there is no mechanical contact between the face of the hammer and the rear of the firing pin. When carrying the shotgun, the hammer should be in the “rest” position.

When the hammer is manually pulled back to its rearmost position (full-cocked), the transfer bar moves up and is positioned between the face of the hammer and the rearmost portion of the firing pin so that when the hammer is released from the fully-cocked position by pulling the trigger, the face of the hammer will strike the transfer bar which, in turn, strikes the firing pin which fires the shot shell. When the trigger is released, the transfer bar drops down leaving a space between the face of the hammer and the rearmost of the firing pin.

This shotgun is designed so that the barrel and chamber cannot be either opened or closed when the firearm is fully cocked.

De-Cocking

If the shotgun is fully cocked and the user desires to place the hammer in the rest position, then the hammer must be under full control of the user.

KEEP THE MUZZLE POINTED IN A SAFE DIRECTION. WHILE CAREFULLY HOLDING AND CONTROLLING THE HAMMER WITH THE THUMB, PULL THE TRIGGER, SLOWLY AND CAREFULLY LET THE HAMMER MOVE FORWARD APPROXIMATELY 1/2" AND RELEASE THE TRIGGER. CONTINUE TO LET THE HAMMER DOWN UNTIL IT IS FULLY FORWARD.

Warning

You should practice this method with an empty shotgun until you are completely familiar and comfortable with this procedure.

How To Load Your Shotgun

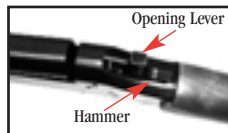
Warning

Before loading this firearm, always check the bore to be sure it is free of grease, oil or any other obstruction. **Be sure** the chamber is empty.



Chamber Open

With the muzzle pointed in a safe direction, press down on the top lever and pull the barrel down. Insert the appropriate gauge shot shell in the chamber and then lift up on the barrel which will cause it to close into the receiver.



To Fire

Warning

Always be sure the shotgun is pointed at the target and away from other people, buildings and vehicles before firing. Do not fire into water.

With the gun pointed at the target, utilize your thumb to pull the hammer back to the full-cock position. Then pull the trigger to fire the shotgun.

Unloading Your Shotgun

To unload the shotgun, press down on the top lever and pull down on the barrel. This will cause the fired or unfired shot shell to be ejected from the chamber.

ALWAYS INSPECT THE BARREL AND BORE VISUALLY TO MAKE SURE THAT THE CHAMBER IS EMPTY.

What to do If Shotgun Fails To Fire

1. Misfires - If you squeeze the trigger and the shot shell does not fire, remain in the shooting position and count to 30. Then, open the firearm as previously described. This will eject the misfired shot shell from the gun.
2. Underpowered Shot Shell - An underpowered shot shell is unusual if the ammunition is fresh, clean, and factory loaded. However, if you hear an unusual sound or low report, you should stop immediately and check, visually, both the chamber and bore to make sure that there is no obstruction.

How to Clean Your Shotgun

Warning

Before cleaning your shotgun, be certain that it is completely unloaded and the bore and chamber are clear.

Clean the bore and barrel by using any standard shotgun cleaning rod, brass bore brush and cleaning patches. First run the brass brush through the barrel several times with powder solvent. Then run clean patches with the rod through the barrel until the patches come out clean. Then apply a light coating of oil on a clean patch and run it through the chamber and barrel. Then put a light coat of oil on all metal surfaces.

Warning

Further disassembly of the shotgun is not recommended and should only be attempted by a qualified gunsmith.

Take Down Instructions

If you wish to “take down” your shotgun for transport or storage, proceed as follows:

1. Make sure shotgun is unloaded.
2. Unscrew, counter clockwise, the forward sling swivel until it is not engaged in the barrel, then pull forearm down and forward from barrel and receiver assembly. Press the top lever down and pull barrel down and then back out of receiver.
3. Reassemble in reverse order.

Use a very thin coat of light oil during below freezing conditions. Condensation droplets will form soon after the firearm is brought into a warm room, or it may become wet during inclement weather. In any case, all moisture should be removed. Exterior metal finishes may be wiped down with a slightly oiled cloth. For long term storage, lightly oil the bore, barrel and action with gun oil. Your firearm should be completely unloaded and stored in a dry area. Never store your firearm in a carrying case.

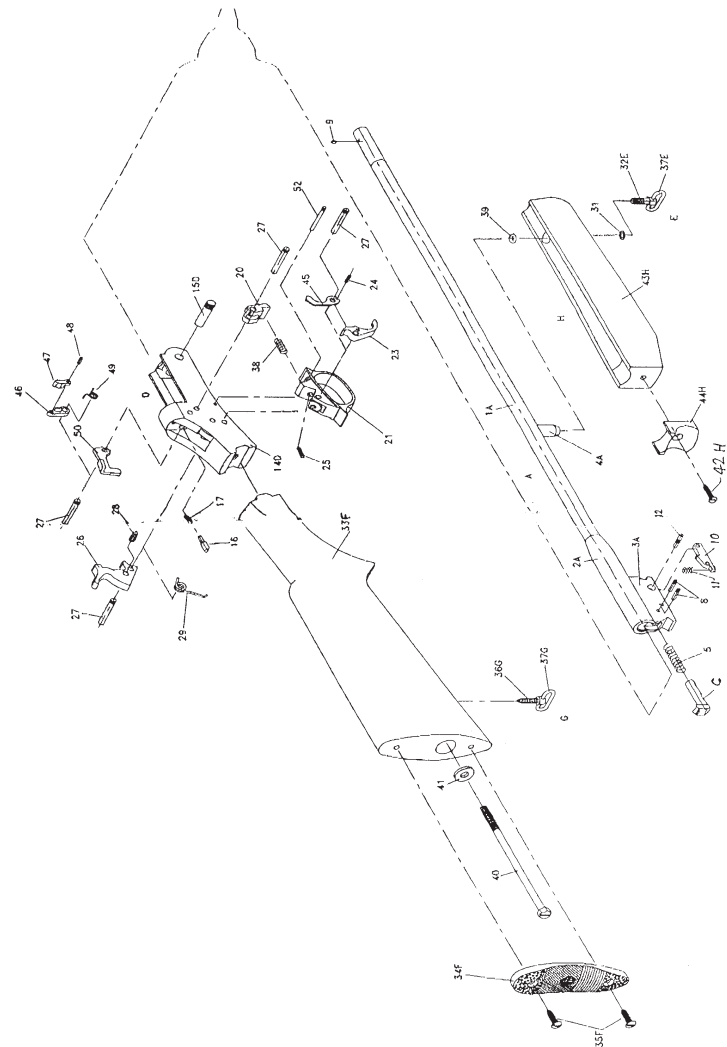
Repair Instructions

Your firearm has been designed, engineered and manufactured in accordance with Rossi’s rigid quality control standards. However, any mechanical device may occasionally require adjustment or repair.

Parts List

Barrel Assembly.....A	Forearm Assembly Screw.....E
1-A	32-E
2-A	Stock AssemblyF
3-A	Stock33-F
4-A	Butt Plate.....34-F
Extractor Spring5	Butt Plate Screw35-F
ExtractorC	Lower Swivel.....G
Extractor Stop Pin.....8	36-G
Front Sight.....9	37-G-E
Extractor Lever10	Locking Piece Spring.....38
Extractor Lever	O-Ring39
Spring11	Butt Stock/Receiver
Extractor Lever Pin12	Screw40
Receiver AssemblyD	Receiver Locking
14-D	Nut41
15-D	Forend Locking
Firing Pin.....16	Screw42-H
Firing Pin Spring17	Forearm AssemblyH
Locking Plate.....20	Wood43-H
Trigger Guard21	Forend44-H
Trigger.....23	Trigger Lever.....45
Trigger Lever Pin.....24	Transfer Bar Lever.....46
Trigger Spring25	Transfer Bar47
Hammer.....26	Transfer Bar Pin.....48
Receiver Assembly	Transfer Bar Lever
Pin.....27	Spring.....49
Hammer Spring Pin.....28	Opening Lever.....50
Hammer Spring29	Trigger Guard Pin52
Forearm Assembly	
Screw Nut31	

Exploded Diagram



Parts

All firearms require periodic maintenance and inspection which may reveal a need for adjustment or repair. Have your firearm checked by a competent gunsmith annually, even if it seems to be working well, since breakage, improper functioning, undue wear, or corrosion of some components may not be apparent from external examination. If you notice ANY mechanical malfunction, do NOT continue to use the firearm. UNLOAD the firearm and take it to a competent gunsmith immediately.

Our Service Department maintains a full complement of replacement parts for our firearms of current manufacture. Even though most gunsmiths have the knowledge, training and ability to make the necessary repairs to your firearm, the skill and workmanship of any particular gunsmith is totally beyond our control. Should your firearm ever require service, we strongly recommend that you return it to BrazTech. Follow the instructions outlined below.

Remember, unauthorized adjustments or parts replacement can void your warranty. It is the responsibility of the purchaser to be absolutely certain that any parts ordered from BrazTech are of the correct type and are properly fitted and installed by a competent person. THIS FIREARM IS A PRECISION MECHANISM AND THE IMPROPER FITTING OF PARTS OR IMPROPER MECHANICAL ADJUSTMENT MAY RESULT IN A DANGEROUS MALFUNCTION, DAMAGE TO THE FIREARM, AND POSSIBLE SERIOUS INJURY TO THE SHOOTER OR TO OTHERS. Therefore, the purchaser and/or installer of parts must accept full responsibility for the correct adjustment of and function of the firearm after such installation has been made or attempted.

© Copyright 1999 Braztech International, L.C.
Rossi is a registered mark of Amadeo Rossi, S.A.

The information in this manual is provided as guidelines and directions for the safe use of your firearm. Braztech and/or Rossi can not be held responsible for the misuse, illegal or negligent use of our products. We strongly encourage all firearms owners to observe all firearms safety rules.

Keep this and all firearms and ammunition away from unsupervised children.
Firearms safety is everyone's responsibility.

rev. 7/99