

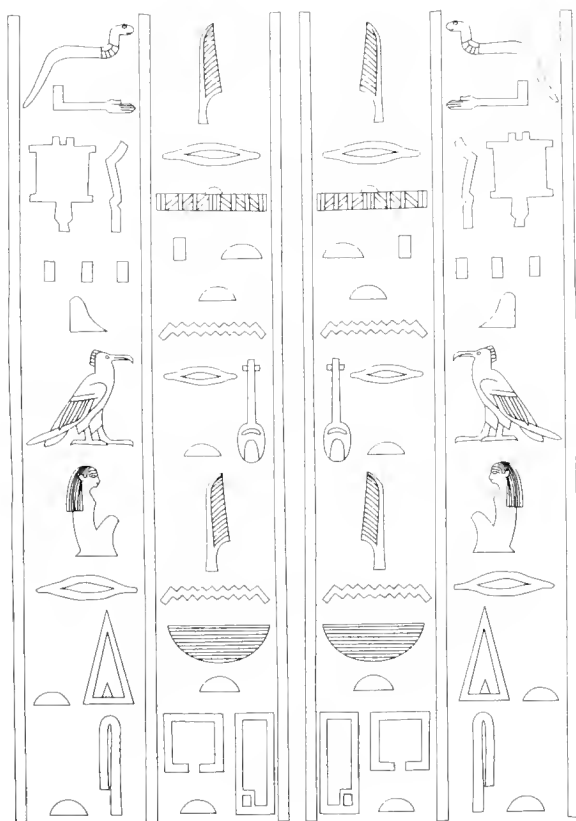
NYU IFA LIBRARY



3 1162 04538709 0

PT

INSTITUTE OF  
FINE ARTS







CATALOGUE GÉNÉRAL  
DES  
ANTIQUITÉS ÉGYPTIENNES  
DU MUSÉE DU CAIRE

---

GRAECO-EGYPTIAN GLASS



SERVICE DES ANTIQUITÉS DE L'ÉGYPTE

---

CATALOGUE GÉNÉRAL  
DES  
ANTIQUITÉS ÉGYPTIENNES  
DU MUSÉE DU CAIRE

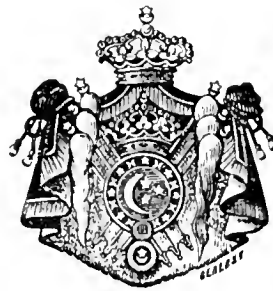
---

N<sup>os</sup> 32401-32800

---

GRAECO-EGYPTIAN GLASS

PAR M. C. C. EDGAR



LE CAIRE

IMPRIMERIE DE L'INSTITUT FRANÇAIS

D'ARCHÉOLOGIE ORIENTALE

---

1905





## INTRODUCTION.

---

The material described in this volume of the *Catalogue général* consists almost entirely of blown glass of Roman, Byzantine and Arabic times<sup>(1)</sup>. The text was written in 1903, and the few vases which have since been acquired are catalogued in the Appendix. The eleven plates, which were made from the photographs of Brugsch Bey, contain illustrations of all the shapes : they are of course far from constituting a complete table of Graeco-Egyptian forms, for though the collection is a fairly good one, there are still a great many types which are not represented in it.

It was perhaps in Egypt that the art of making glass originated, and Egyptian work in this material, from the polychrome vases of the XVIII<sup>th</sup> dynasty to the great enamelled lamps of the XIV<sup>th</sup> century A. D., is justly renowned. In the literature of Roman times we find several references to the glass-workers of Egypt<sup>(2)</sup>. But the vases catalogued in the following pages are not of the sort that would have attracted the admiration of a Roman connoisseur. They are of ordinary blown glass with little or no decoration. It used to be thought that glass-blowing was practised in Egypt from a very early period. Certain scenes which occur on the walls of Egyptian tombs were regarded as representations of glass-blowers at work<sup>(3)</sup>. But no blown glass earlier than Hellenistic or perhaps even Roman times has yet been discovered in Egypt, and the wall-paintings are now interpreted differently<sup>(4)</sup>. The earlier Egyptian vases, such as the variegated bottles of the XVIII<sup>th</sup> dynasty, were modelled by hand on a core<sup>(5)</sup>. When and where the art of glass-blowing was discovered is a problem that has not yet been solved.

<sup>(1)</sup> N<sup>o</sup> 32733, which is made of thick blue glass, has more probably been modelled : I have no clue as to its age. N<sup>o</sup> 32729 is another unique specimen.

<sup>(2)</sup> Strabo, XVI, 758; Athenaeus, 784 c; Letter of Hadrian to Servianus. See also *Description de l'Égypte*, vol. IX, p. 213 ff. Glass seems to have been one of the chief articles of export from Egypt (MILNE, *Egypt under Roman Rule*, p. 163).

<sup>(3)</sup> WILKINSON, *Ancient Egyptians*, vol. II, p. 140; BLÜMNER, *Technologie und Terminologie*, vol. IV, p. 394.

<sup>(4)</sup> See *Beni Hasan*, IV, p. 6 (Griffith).

<sup>(5)</sup> PETRIE, *Tell el Amarna*, p. 27.

From a passage in Seneca we gather that in his time it was regarded as quite a modern invention<sup>(1)</sup>. Pliny speaks of it incidentally as one of various methods practised by the artificers of Sidon, who were the most famed glass-makers in the Roman world<sup>(2)</sup>. On general grounds it seems most probable that the blow-pipe was first used in the eastern corner of the Mediterranean, either in Phoenicia or in Egypt, the two chief centres of the industry. A careful record of finds and excavations would do a great deal towards determining the place and date of its introduction. In Cyprus, where we should expect to find it early, blown glass is said to be characteristic of late Ptolemaic as well as of Roman tombs<sup>(3)</sup>. In Egypt, so far as I know, it has not yet been observed in pre-Roman finds<sup>(4)</sup>, though that may of course be partly the result of accident. The Ptolemaic cemeteries of the Fayoum have yielded plenty of pottery but no vases of the sort in question. Nor can any of the blown glass found in Alexandria be definitely assigned to the Ptolemaic period<sup>(5)</sup>.

Blown glass is very plentiful in Egypt, but we have very little information about the circumstances of the finds. It is not yet possible to follow the progress of the art or to date the separate pieces with any certainty. A comparative study of the Roman glass found in other countries would no doubt help to establish the ages of certain types, though the material elsewhere is itself in much need of being worked at and classified. In the meantime it may be useful to put together the following scraps of information which bear directly on the collection before us.

A good deal of glass was found by Mr. Petrie in the Hawara cemetery in 1888. It all came from the later burials and not from the tombs which contained mummies with cartonnage masks or panel portraits. Hence, roughly speaking, it belongs to the period between 250 A. D. and the beginning of the vi<sup>th</sup> century.

<sup>(1)</sup> *Epist.* xc, 31. Cuperem Posidonio vitriarium ostendere, qui spiritu vitrum in plurimos habitus format, qui vix diligenti manu effingerentur. Hæc inventa sunt postquam sapientem invenire desivimus. He is combating the view of Posidonius that the mechanical arts were invented by the *sapientes*.

<sup>(2)</sup> *Hist. Nat.*, XXXVI, 66. Pliny's account of the invention of glass by the Phoenicians is of course a fable, but some authorities would credit them with the discovery of how to make the transparent, colourless glass of later times, — a view which seems not at all improbable, though there is no direct evidence for it.

<sup>(3)</sup> MYRES and RICHTER, *Cat. of Cyprus Mus.*, p. 100. Mr. Myres adds, however, that "it is even possible that the plain blown glass dates wholly from the Roman period".

<sup>(4)</sup> See *Burlington Fine Arts Club Exhibition*, 1895, p. xxv (Petrie).

<sup>(5)</sup> Dr Breccia has kindly given me information on this point. None of the glass in the Alexandria Museum is known to have been found in Ptolemaic tombs, and the present excavations in the Ptolemaic cemetery of Chatby have not yet brought to light any blown glass vases.

A share of this find is in the Museum (see Index, *Hawara*). Other vases are figured in *Hawara, Biahmu and Arsinoe*, where more exact dates are assigned to a few of them. On plate XIX, amid a small group of bottles from a tomb which according to Petrie's reckoning is earlier than the fourth century, we find forms exactly like nos 32527, 32677, 32680, to mention only the more obvious cases of resemblance. Plate XX, nos 15, 16, 17, which also come from one tomb, are of the same type as nos 32663, 32629, 32634; while no 3 on the same plate is similar to no 32686, no 5 to no 32518, and no 4 may be compared with no 32584. In *Illahun, Kahun and Gurob*, plate XXIII, there is shown a very interesting group of vases, most of which were found in one tomb supposed to be about the time of Constantine. Of these no 1 (cf. also nos 4 and 5) is of exactly the same type as our no 32588; the small bottle no 7, whose body is composed of two heads back to back, is a counterpart of no 32573; and nos 11 and 15 are like duplicates of the Fayoum vase no 32753, which Grenfell and Hunt have dated on independent evidence to the iii<sup>rd</sup> or iv<sup>th</sup> century. Among some other vases figured on the same plate as the tomb-group but said to be later we find a bottle like no 32710 and shapes similar to some of those on plates VII and VIII. It should be noticed that one vase, no 13, is thought to be as late as the vii<sup>th</sup> century from the clothing found with it: it is not one of the types that are represented in our collection.

Several of the vases shown on plate X were found in the Fayoum by Messrs. Grenfell and Hunt, to whom I am indebted for the following information. No 32751, which comes from Sela, was found along with various small objects, among which was a piece of v<sup>th</sup> century papyrus. The others come from Fag el-Gamus, a cemetery about six miles south of Rubayyat: nos 32753 and 32760, which were found together, are probably iii<sup>rd</sup> or iv<sup>th</sup> century; nos 32750 and 32756 were likewise found together and are probably iv<sup>th</sup> to vi<sup>th</sup>; while the others might be of any date from iii<sup>rd</sup> to vi<sup>th</sup> century so far as the external evidence goes. Still another group of Fayoum vases is described in the Appendix, nos 32779-32783. These were found quite lately at Karanis (Kum Ushim), a town which seems to have existed from the Ptolemaic period to about the time of the Arab conquest <sup>(1)</sup>.

At Oxyrynchus Grenfell and Hunt have found dark blue bottles of the same shape and fabric as no 32712 amid v<sup>th</sup> or vi<sup>th</sup> century remains. A vase of thick green glass like no 32677 was obtained in a i<sup>st</sup> century stratum, but it seems questionable whether it did not get there by some accident: it is certain at least that bottles

(1) GRENFELL, HUNT, HOGARTH, *Fayoum Towns*, p. 29.

of the same type occur in finds of much later date. N° 32754, pl. X, is also an Oxyrynchus vase and is dated to the III<sup>rd</sup> century A. D.

A few glass bottles from Alexandria of the same form as n°s 32620 and 32667 are published in the *Bulletin de la Soc. arch.*, n° 3, pl. IX. According to H. Thiersch, the author of the report, the tombs from which they come seem to cover about a hundred years of the Roman period, belonging for the most part to the decline of the Empire (p. 25, 36).

Of the individual pieces in the collection the most remarkable is the highly ornamented vase n° 32731. N° 32740 is a good example of cut decoration. The small saucer n° 32761 is the only specimen of painted glass that the Museum at present possesses, though transparent glass with painted designs is not uncommon in Egypt : many pieces have been found at Oxyrynchus and other towns, dating from the Roman and Byzantine ages. The little reliefs n°s 32762-32770 belong to another interesting class of work. They were made separately with a stamp or mould and then applied as ornamentation to glass utensils. Another small group of them has been published by M. Casanova<sup>(1)</sup>, who has pointed out that they are the prototypes of the stamped disks which in Arabic times were attached to the necks of glass bottles to certify that they held the proper measure. As can be seen from the style and the subjects, they belong as a whole to Roman and Byzantine times, though one late specimen bears an inscription in Arabic (*op. cit.*, pl. I, n° 15). There is not much variety of subject among those that have hitherto been published, and several of the types shown on plate X occur also in the series which M. Casanova has catalogued.

If little exact information can be gleaned from modern publications about blown glass in Egypt during the Roman rule, still less seems to be known about the ordinary glass of Arabic times. There is no doubt that the art of glass-blowing continued to be practised throughout the middle ages down to the present day. Sometimes one finds a thread of connection. N° 32479, for instance, is the prototype of those Arabic vessels which one so often sees on the great bronze chandeliers : the simple form (without the internal arrangement for lighting) seems to be certainly earlier than the conquest. A Persian traveller speaks admiringly of the transparent green glass which was made here in the XI<sup>th</sup> century<sup>(2)</sup>. The *Description de l'Égypte*, vol. IX, p. 234 ff., gives some interesting

<sup>(1)</sup> *Mémoires de la Mission française*, VI, 3 : *Cat. des pièces de verre de la coll. Fouquet*. An Arabic bottle bearing a seal of this kind is figured on p. 364, n° 36. Cf. also LANE-POOLE, *Cat. of Arabic Glass Weights in the Br. Mus.*, p. xvii.

<sup>(2)</sup> LANE-POOLE, *Hist. of Eg. in the Middle Ages*, p. 141; *Art of the Saracens*, p. 250.

information about the state of the industry a hundred years ago. Part of the material in our collection belongs in all probability to the Arabic period, though naturally it is impossible as yet to make any strict division. Nos 32784-32799 (see pl. XI) comprise a group of glass bottles which were lately found on the site of Memphis. Some seraps of Arabic manuscripts<sup>(1)</sup> were dug up at the same time, and though the various objects were not found together in one spot, I have little doubt that they are all quite late. Vases of similar kind are generally known among dealers and collectors as Arabic glass, probably owing to so many of them being found in the mounds of old Cairo<sup>(2)</sup>. Small bottles like nos 32716-32719 (often with cut patterns) and like nos 32721-32726 are among the commonest of these late types. The technique of the ornamentation of nos 32739 and 32785 is the same as that of nos 32475-32476, and the latter may also be assigned with probability to the Arabic period. Nos 32577 and 32736, perhaps also n° 32608, may well be Arabic, as they came into the Museum along with some of the above-mentioned vases. N° 32592 is described in the *Slip-catalogue* as «probablement Arabe». If early Arabic sites should ever come to be excavated for papyri or other spoil, we may then perhaps get some information of a more satisfactory kind about the glass of that period.

<sup>(1)</sup> These manuscripts, which are partly paper, partly papyrus, have been examined by M. Casanova, who is of opinion that they date from between 400 and 450 of the Hegira.

<sup>(2)</sup> There is a collection of small glass bottles in the Arabic Museum in Cairo, including a good many pieces like those mentioned in the text, though part of it is probably of the pre-Mohammedan period. As the curators have kindly informed me, it comes from Old Cairo for the most part, but nothing definite is known about the date of the various objects.



CATALOGUE GÉNÉRAL  
DES  
ANTIQUITÉS ÉGYPTIENNES  
DU MUSÉE DU CAIRE.

---

GRAECO-EGYPTIAN GLASS.

**32401.** Round plate. — Height 0 m. 04 cent., diameter 0 m. 25 cent. —  
Bought, 1887 (pl. 1).

Stands on a ring-foot. The central part, within the circumference of the ring, is concave on the inside with a swelling in the middle and is bordered by a sunken line. The zone between this and the sides is convex. The sides, which curve upwards rather sharply, are nearly perpendicular. Rounded rim with slight outward projection.

COLOUR : Light green, transparent glass.

TECHNIQUE : Blown fairly thin; mark of separation from rest of glass in centre of outside. The central part is rather unevenly shaped.

PRESERVATION : Some dark iridescent patina here and there on outside, especially about base.

BIBL. : *Journal d'entrée du Musée*, n° 28138.

**32402.** Round plate. — Height 0 m. 045 mill., diameter 0 m. 235 mill. —  
Bought, 1887.

Of same shape as n° 32401; impression round outside of rim.

COLOUR AND TECHNIQUE : Same as n° 32401. Not very evenly shaped, one side being a good deal higher than the other.

PRESERVATION : Iridescent patina here and there as on n° 32401.

BIBL. : *Journal d'entrée du Musée*, n° 28139.

*Catal. du Musée*, n° 32401.

**32403. Round plate.** — Height 0 m. 052 mill., diam. 0 m. 255 mill.

Same type as n° 32401; the inside, however, is flatter and the sides less perpendicular.

COLOUR : Pale green tinge.

TECHNIQUE : Same as n° 32401. Unevenly shaped, one side being much higher than the other.

PRESERVATION : Some iridescent patina on outside; incrustated dirt on inside.

**32404. Round plate.** — Height 0 m. 054 mill., diam. 0 m. 23 cent.

Same type as n° 32401.

COLOUR : Pale green tinge.

TECHNIQUE : Like n° 32401; thin-blown and rather unevenly shaped.

PRESERVATION : Incrustated with dirt.

**32405. Round plate.** — Height 0 m. 04 cent., diam. 0 m. 22 cent.

Same type as n° 32401; impressed line round inside of rim.

COLOUR : Yellowish green tinge.

TECHNIQUE : Like n° 32404.

PRESERVATION : Incrustated with dirt.

**32406. Round plate.** — Height 0 m. 044 mill., diam. 0 m. 212 mill.  
(pl. I).

Same general type as n° 32401; no impressed line round central part; the sides curve inwards at the top and the rim is no thicker than the rest of vase.

COLOUR : Pale bluish green tinge.

TECHNIQUE : Like n° 32401; usual mark of separation on outside of base; rather deep marks of shaping below rim. Thin-blown.

PRESERVATION : Incrustated with dirt.

**32407. Round plate.** — Height 0 m. 035 mill., diam. 0 m. 173 mill. (pl. I).

Same shape as the preceding, but smaller : the rim has a slight outward projection.

COLOUR : Very pale green tinge.

TECHNIQUE : Thin-blown; usual mark of separation on base.

PRESERVATION : Dirty.



32408. Elliptical plate. — Height 0 m. 059 mill., length 0 m. 23 cent., breadth 0 m. 16 cent. (pl. I).

Stands on an elliptical ring-foot with slanting impressions round outside; rounded rim; slight swelling in middle of inside.

COLOUR : Pale green tinge.

TECHNIQUE : Blown fairly thick; mark of separation on outside of base; rather unevenly shaped; the rim, which has been made by turning over the edge of the glass, is of varying thickness; the long sides of ring-foot are pinched slightly inwards.

PRESERVATION : Intact.

32409. Elliptical plate. — Height 0 m. 06 cent., length 0 m. 23 cent., breadth 0 m. 165 mill.

Of same shape as n° 32408; the slope of the sides is rather more convex (on the interior).

COLOUR : Pale green tinge.

TECHNIQUE : Like n° 32408; several air-bubbles in the glass.

PRESERVATION : Intact.

32410. Elliptical plate. — Height 0 m. 057 mill., length 0 m. 225 mill., breadth 0 m. 162 mill.

Of same shape as n° 32408; more slanting lines round outside of ring-foot.

COLOUR : Yellowish green tinge.

TECHNIQUE : Like n° 32408; very unevenly shaped.

PRESERVATION : Intact.

32411. Elliptical plate. — Height 0 m. 047 mill., length 0 m. 245 mill., breadth 0 m. 177 mill. (pl. I).

Same type as the preceding. The ring-foot is very low and is marked as usual with slanting strokes. Central part of inside is convex. Broad, rounded rim.

COLOUR : Pale green.

TECHNIQUE : More carefully made than the preceding; no mark of separation on base; one or two air-bubbles.

PRESERVATION : Intact.

32412. Elliptical plate. — Height 0 m. 047 mill., length 0 m. 265 mill., breadth 0 m. 175 mill.

Shaped like n° 32411; lower edge of ring-foot forms a curving line.

COLOUR AND TECHNIQUE : Like n° 32411, but not so truly made; the breadth of the rim varies a good deal.

PRESERVATION : Intact.

32413. Elliptical plate. — Height 0 m. 043 mill., length 0 m. 222 mill., breadth 0 m. 167 mill.

Same shape as n° 32412.

COLOUR : Yellowish tinge, but nearly colourless.

TECHNIQUE : Like n° 32411; fairly regular.

PRESERVATION : Small chip on base; two slight cracks.

32414. Elliptical plate. — Height 0 m. 06 cent., length 0 m. 215 mill., breadth 0 m. 17 cent.

Same type as n° 32408 sq.; low ring-foot with slanting impressions; groove round outside of rim.

COLOUR : Nearly colourless, but brown tinge in the thicker parts.

TECHNIQUE : Mark of separation on base; fairly regular, but broader at one end than at the other.

PRESERVATION : Intact.

32415. Elliptical plate. — Height 0 m. 055 mill., length 0 m. 185 mill., breadth 0 m. 14 cent. (pl. 1).

Similar to preceding; the ring-foot spreads outwards and has the usual slanting impressions.

COLOUR : Greenish tinge.

TECHNIQUE : Mark of separation on base; shape fairly regular; one or two air-bubbles.

PRESERVATION : Intact.

32416. Elliptical plate. — Height 0 m. 055 mill., length 0 m. 215 mill., breadth 0 m. 17 cent. — Bought, 1887.

Similar to preceding; ring-foot like that of n° 32415 but lower; usual swelling in centre of inside.

COLOUR : Yellowish green tinge.

TECHNIQUE : Mark of separation on base; fault in rim at one place, showing clearly how it has been doubled over; several air-bubbles.

PRESERVATION : Intact.

Bibl. : *Journal d'entrée du Musée*, n° 27795.

32417. **Elliptical plate.** — Height 0 m. 04 cent., length 0 m. 175 mill., breadth 0 m. 14 cent.

Like n° 32416, but smaller.

COLOUR : Green tinge about base.

TECHNIQUE : Mark of separation on base; rim very irregular.

PRESERVATION : Intact.

32418. **Elliptical plate.** — Height 0 m. 055 mill., length 0 m. 198 mill., breadth 0 m. 14 cent. — Bought, 1887.

Like n° 32408 sq., with low, narrow ring-foot.

COLOUR : Green tinge.

TECHNIQUE : Mark of separation on base; fault on one side, the glass projecting like a small spike; fault also on rim; shape rather irregular.

PRESERVATION : Intact.

Bibl. : *Journal d'entrée du Musée*, n° 27796.

32419. **Elliptical plate.** — Height 0 m. 04 cent., length 0 m. 16 cent., breadth 0 m. 115 mill. — Bought, 1887.

Small plate like the preceding; no impressed lines on ring-foot; usual swelling in middle of inside.

COLOUR : Pale green tinge.

TECHNIQUE : No mark of separation on base; shape fairly regular.

PRESERVATION : Intact.

Bibl. : *Journal d'entrée du Musée*, n° 27797.

32420. **Shallow bowl.** — Height 0 m. 045 mill., diameter 0 m. 14 cent. — Bought, 1887.

Round, shallow bowl with ring-foot and doubled-over rim. Slight swelling round middle of inside, just above ring-foot; impressed line round inside of rim; slanting impressions on ring-foot (scarcely visible).

COLOUR : Pale green tinge, but nearly colourless.

TECHNIQUE : Fairly regular, though rather higher on one side; no mark of separation on base.

PRESERVATION : Intact.

BIBL. : *Journal d'entrée du Musée*, n° 27798.

32421. **Shallow bowl or saucer.** — Height 0 m. 04 cent., diam. 0 m. 145 mill.  
— Bought, 1887 (pl. I).

Round saucer with rounded ring-foot and doubled-over rim turned inwards. Swelling in middle of inside and sunken line round about, just above ring-foot.

COLOUR : Pale blue tinge.

TECHNIQUE : Regularly shaped and fairly fine-blown; mark of separation on base.

PRESERVATION : Iridescent patina on base (partly peeled off).

BIBL. : *Journal d'entrée du Musée*, n° 28141.

32422. **Bowl.** — Height 0 m. 058 mill., diam. 0 m. 165 mill. (pl. I).

Round bowl with curving profile; stands on outward-spreading ring-foot; central part of inside is convex and there is a deep line of division round about; fairly thick rim with impressed line round inside.

COLOUR : Pale bluish tinge.

TECHNIQUE : Fine-blown, but not very regular; mark of separation on base.

PRESERVATION : Slight iridescence here and there; incrustated with dirt.

32423. **Shallow bowl.** — Height 0 m. 052 mill., diam. 0 m. 16 cent. (pl. I).

Stands on spreading ring-foot with slanting impressions (cf. n° 32415); the sides curl outwards from base and then turn upwards in an almost perpendicular line with a slight inward curve; large doubled-over rim, projecting outwards; usual swelling in centre, above the mark of separation.

COLOUR : Greenish brown tinge.

TECHNIQUE : Blown fairly thick; mark of separation on base; rim not of uniform size.

PRESERVATION : Intact.

32424. **Shallow bowl.** — Height 0 m. 05 cent., diameter 0 m. 155 mill. —  
Bought, 1887.

Same type as n° 32423.

COLOUR : Green tinge.

TECHNIQUE : Mark of separation on base; one side very irregularly shaped; base full of air-bubbles.

PRESERVATION : Crack on one side.

BIBL. : *Journal d'entrée du Musée*, n° 27800.

**32425. Shallow bowl.** — Height 0 m. 0'47 mill., diam. 0 m. 16 cent.

Similar to n° 32423, but shallower; impressed line round inside of rim.

COLOUR : Greenish brown.

TECHNIQUE : Mark of separation on base; regularly shaped; air-bubbles in base.

PRESERVATION : Intact.

**32426. Shallow bowl.** — Height 0 m. 0'55 mill., diam. 0 m. 14 cent. (pl. I).

Like n° 32423, but with less curve in the sides.

COLOUR : Green.

TECHNIQUE : Mark of separation on base; full of small air-bubbles.

PRESERVATION : Intact.

**32427. Shallow bowl.** — Height 0 m. 0'52 mill., diam. 0 m. 165 mill.

Of same type as n° 32423; the perpendicular part of the sides has no inward curve.

COLOUR AND TECHNIQUE : Like n° 32423.

PRESERVATION : Intact.

**32428. Shallow bowl.** — Height 0 m. 0'4 cent., diam. 0 m. 13 cent.

Small vase of same shape and colour as n° 32423; impressed line round inside of rim.

TECHNIQUE : Mark of separation on base; shape rather irregular.

PRESERVATION : Intact.

**32429. Shallow bowl.** — Height 0 m. 0'6 cent., diam. 0 m. 16 cent. (pl. I).

Like the preceding, but without so sharp a curve in the sides.

COLOUR : Greenish brown.

TECHNIQUE : Mark of separation on base; shape not very regular; several air-bubbles.

PRESERVATION : Intact.

**32430. Shallow bowl.** — Height 0 m. 048 mill., diam. 0 m. 155 mill. (pl. I).

Flat vase with still less curve in the sides than n° 32429; ring-foot of usual shape but with scarcely any marks; rim curved inwards.

COLOUR : Green tinge.

TECHNIQUE : Mark of separation on base; one side much higher than the other; full of small air-bubbles.

PRESERVATION : Crack on one side.

**32431. Shallow bowl.** — Height 0 m. 044 mill., diam. 0 m. 135 mill.

Like n° 32430, but smaller; marks on ring-foot.

COLOUR : Greener than n° 32430.

TECHNIQUE : Mark of separation on base; small bubbles in glass.

PRESERVATION : Foot chipped in two places.

**32432. Shallow bowl.** — Height 0 m. 06 cent., diam. 0 m. 16 cent.

Like n° 32430 and 32431, but rather higher; short thick ring-foot with usual impressions.

COLOUR : Green, which changes to brown on one half of base.

TECHNIQUE : Usual mark of separation; shape not very regular.

PRESERVATION : Intact.

**32433. Vase.** — Height 0 m. 08 cent., diam. 0 m. 145 mill. (pl. I).

Cup or bowl with spreading ring-foot marked in the usual way; the sides curve upwards and then outwards; large doubled-over rim, more or less perpendicular; usual protuberance in middle of inside.

COLOUR : Brownish green.

TECHNIQUE : Mark of separation on base; lines round rim; several air-bubbles.

PRESERVATION : Intact.

**32434. Vase.** — Height 0 m. 068 mill., diam. 0 m. 125 mill.

Of same shape as n° 32433, but smaller.

COLOUR : Rather browner than n° 32434.

TECHNIQUE : Mark of separation on base; several air-bubbles.

PRESERVATION : Foot chipped; crack on one side.

32435. Vase. — Height 0 m. 057 mill., diam. 0 m. 105 mill.

Similar to the preceding, but still smaller.

COLOUR AND TECHNIQUE : Like n° 32434.

PRESERVATION : Intact.

32436. Vase. — Height 0 m. 065 mill., diam. 0 m. 105 mill. (pl. I).

Same type as n° 32433; the top of the foot is narrower.

COLOUR : Pale green.

TECHNIQUE : Mark of separation on base; rim accidentally pinched out at one place; small air-bubbles.

PRESERVATION : Small chip on ring-foot.

32437. Vase. — Height 0 m. 062 mill., diam. 0 m. 23 cent. — Bought, 1887.

Of same type as n° 32433; the upper part is comparatively wide and the rim has a slight inward slope.

COLOUR : Pale green.

TECHNIQUE : Mark of separation on base; winding marks round body; full of small air-bubbles.

PRESERVATION : Intact.

BIBL. : *Journal d'entrée du Musée*, n° 27799.

32438. Vase. — Height 0 m. 06 cent., diam. 0 m. 135 mill.

Same shape as n° 32437.

COLOUR : Pale brown.

TECHNIQUE : Usual mark of separation; lines round rim; several large air-bubbles.

PRESERVATION : Crack down one side.

32439. Vase. — Height 0 m. 095 mill., diam. 0 m. 155 mill. (pl. I).

Large bell-shaped cup with doubled-over rim and spreading ring-foot with usual markings.

COLOUR : Brownish green.

TECHNIQUE : Rather unevenly shaped; mark of separation on base; hollow beneath rim in one place; air-bubbles.

PRESERVATION : Intact.

*Catal. du Musée*, n° 32401.

32440. Vase. — Height 0 m. 087 mill., diam. 0 m. 15 cent. (pl. II).

Plain bowl with spreading ring-foot and doubled-over rim; indistinct markings on foot.

COLOUR : Pale green.

TECHNIQUE : No mark on base; several very large air-bubbles.

PRESERVATION : Intact.

32441. Vase. — Height 0 m. 068 mill., diam. 0 m. 105 mill.

Small bowl of same shape as n° 32440; usual markings on ring-foot.

COLOUR : Brownish green.

TECHNIQUE : Mark of separation on base and corresponding protuberance on the inside; great many particles of dirt embedded in the glass.

PRESERVATION : Intact.

32442. Small vase. — Height 0 m. 05 cent., diam. 0 m. 085 mill. (pl. II).

Cup with spreading ring-foot (plain) and thick, rounded rim.

COLOUR : Green.

TECHNIQUE : Evenly shaped; usual mark on base.

PRESERVATION : Intact.

32443. Cup with stem. — Height 0 m. 095 mill., diam. 0 m. 135 mill. (pl. II).

The bowl of the vase is of the same type as n° 32433. Round, solid stem spreading out below and covered with impressed markings.

COLOUR : Brownish green.

TECHNIQUE : Shape fairly regular; mark of separation on base; winding marks on bowl; full of small bubbles and roughnesses.

PRESERVATION : Crack in one place.

32444. Cup with stem. — Height 0 m. 083 mill., diam. 0 m. 145 mill. —  
Fayoum (label) (pl. II).

Flat bowl with upright sides and doubled-over rim; stem like that of n° 32443.

COLOUR : Stem brown and brown tinge on upper part.

TECHNIQUE : Shape fairly regular; mark of separation on base.

PRESERVATION : Intact.


BIBL. : *Notice*, 1892-1897, n° 324; *Guide*, 1902, p. 266, n° 324.



32445. Flat bowl with foot. — Height 0 m. 075 mill., diam. 0 m. 20 cent. (pl. II).

Rather large, shallow vessel standing on ring-foot with slight outward spread; the sides spread outward, and then turn upwards at a rather sharp angle, and there are slight curves both in the horizontal and the vertical parts; small rounded rim.

COLOUR : Green tinge.

ORNAMENTATION : Round the horizontal part of outside is a zigzag pattern in whitish lines, and there is another design, in broader lines, in the middle of interior . The lines seem to have been made by scratching or roughening the surface.

TECHNIQUE : Fairly thick and evenly shaped; no mark on base.

PRESERVATION : Intact.

32446. Vase. — Height 0 m. 065 mill., diam. 0 m. 15 cent. (pl. II).

Thick ring-foot; the sides curve upwards and project horizontally round the top; slight curve in the horizontal part; small rounded rim, doubled-over in the usual way.

COLOUR : Transparent and colourless.

TECHNIQUE : Blown fairly thick; winding lines round body; no mark of separation.

PRESERVATION : Intact.

32447. Vase. — Height 0 m. 075 mill., diam. 0 m. 155 mill.

Similar to n° 32446; the projecting part is more strongly curved, and there is a more distinct rim; middle of inside convex.

COLOUR : Almost colourless; slight green tinge in ring-foot.

TECHNIQUE : No mark of separation on base.

PRESERVATION : Long crack in one side.

32448. Vase. — Height 0 m. 07 cent., diam. 0 m. 15 cent.

Very similar to n° 32446; slight greenish tinge in ring-foot.

PRESERVATION : Intact.

32449. Vase. — Height 0 m. 08 cent., diam. 0 m. 15 cent. (pl. II).

Similar to n° 32447 in shape, colour and technique.

PRESERVATION : Intact.

32450. Vase. — Height 0 m. 065 mill., diam. 0 m. 135 mill. (pl. II).

Bell-shaped cup with slight base-ring; doubled-over rim with line of demarcation on inside; protuberance on inside of base.

COLOUR : Pale green tinge, but almost colourless.

TECHNIQUE : Mark of separation on base; slight flaws at junction of base-ring; small roughnesses in the glass.

PRESERVATION : Incrusted with dirt here and there.

32451. Vase. — Height 0 m. 055 mill., diam. 0 m. 115 mill.

Similar to n° 32450, except that there is a stronger outward curve round the top.

COLOUR : Bluish green tinge.

TECHNIQUE : Mark of separation on base.

PRESERVATION : More or less decomposed and iridescent; surface incrusted with dirt.

32452. Vase. — Height 0 m. 06 cent., diam. 0 m. 105 mill. (pl. II).

Bell-shaped cup with thick ring-foot and rather large rim with line of demarcation on the inside.

COLOUR : Almost colourless; pale green tinge in base.

TECHNIQUE : Comparatively thick glass with a good many small bubbles and roughnesses; no mark on base.

PRESERVATION : Slight crack through base.

32453. Vase. — Height 0 m. 085 mill., diam. 0 m. 14 cent.

Broad, bell-shaped bowl standing on a slightly spreading ring-foot; the rim is quite thin; the neck is encircled by a rounded collar which projects on inside as well as on outside; deep line on inside round junction of base and hollow in the centre.

COLOUR : Pale green tinge.

TECHNIQUE : Fairly regular and fine-blown; mark of separation on base.

PRESERVATION : Good deal of incrustation.

32454. Vase. — Height 0 m. 065 mill., diam. 0 m. 103 mill. (pl. II).

Small bowl of same type as n° 32453; the ring-foot consists of two contiguous rings, one inside the other.

COLOUR : Pale bluish green.

TECHNIQUE : Mark of separation on base; foot faultily made.

PRESERVATION : Base slightly iridescent; some incrustation.

BIBL. : *Journal d'entrée du Musée*, n° 30094 (?) ; if so, from Mit Rahineh.

32455. Vase. — Height 0 m. 06 cent., diam. 0 m. 09 cent. (pl. II).

Cup or small bowl with profiled base, flat underneath; slight groove round neck, rim projecting outwards a little; mark on inside round junction of base and protuberance in the middle.

COLOUR : Pale bluish green tinge.

TECHNIQUE : Mark of separation on base.

PRESERVATION : Some incrustation.

32456. Vase. — Height 0 m. 065 mill., diam. 0 m. 09 cent. (pl. II).

Round-bottomed cup with outward-curving, sharp-cut rim; the sides curve slightly inwards towards the neck.

COLOUR : Colourless.

TECHNIQUE : Fairly fine-blown; cut off round rim, leaving a sharp, rough edge.

PRESERVATION : Rim slightly chipped; iridescent and incrustated in places.

32457. Cup. — Height 0 m. 068 mill., diam. 0 m. 095 mill. (pl. II).

Rather wide cup with upright sides and outward-curving rim; rounded ring-foot in middle of base; protuberance in middle of inside.

COLOUR : Pale bluish green tinge.

TECHNIQUE : Mark of separation on base; many small bubbles in glass.

PRESERVATION : Some incrustation.

32458. Cup. — Height 0 m. 073 mill., diam. 0 m. 095 mill. — Mit Rahineh (pl. II).

Widens out slightly towards top; the sides are nearly straight and curve into the base without any abrupt transition; narrow rounded collar round outside a little below top; slightly projecting rim; swelling on inside of base.

COLOUR : Pale bluish green.

TECHNIQUE : Mark of separation on base; the collar, which was no doubt applied separately, has overlapping ends.

PRESERVATION : Iridescent scum on base; some incrustation.

BIBL. : *Journal d'entrée du Musée*, n° 30093.

32459. Cup. — Height 0 m. 081 mill., diam. 0 m. 103 mill.

Same shape and colour as n° 32458; mark of separation on base, which is decidedly hollow underneath.

PRESERVATION : Iridescent here and there; surface largely incrustated with dirt.

32460. Cup. — Height 0 m. 096 mill., diam. 0 m. 102 mill. (pl. II).

Widens out towards top; slightly drawn-in neck and sharp-cut rim like that of n° 32456; the sides curve gently into a small flat base. There are three dark excrescences round lower part of body, and the upper part is encircled by some fine, regularly drawn lines.

COLOUR AND TECHNIQUE : Like n° 32456.

PRESERVATION : Iridescent scum here and there; surface incrustated with dirt.

32461. Cup. — Height 0 m. 087 mill., diam. 0 m. 094 mill. (pl. II).

Widens out considerably towards top; rim projects outwards; slight curve in sides and slight hollow in base.

COLOUR : Pale bluish green.

TECHNIQUE : Mark of separation on base (?); not very evenly made.

PRESERVATION : Some incrustation on surface.

32462. Cup. — Height 0 m. 055 mill., diam. 0 m. 085 mill. — Hawara, from the finds of Mr. Petrie, 1887-1888 (pl. II).

Small cup with rounded ring-foot, sloping sides, and rounded rim projecting inwards.

COLOUR : Transparent and colourless.

TECHNIQUE : No mark on base except a small hollow.

PRESERVATION : Large piece broken out of one side; milky film (decomposition?).

BIBL. : *Journal d'entrée du Musée*, n° 28340.

32463. Cup. — Height 0 m. 097 mill., diam. 0 m. 095 mill. — Mit Rahineh, 1892 (pl. II).

Straight, slightly sloping sides with narrow rounded collar and outward-curving rim; flat base with rounded edge; swelling on inside of base.

COLOUR : Pale green tinge.

TECHNIQUE : Mark of separation on base; lines of shaping on inside of rim.

PRESERVATION : Covered with incrustation.

BIBL. : *Journal d'entrée du Musée*, n° 30091.

32464. Vase. — Height 0 m. 097 mill., diam. of rim 0 m. 075 mill. (pl. II).

The sides slope inwards and spread out round the top; collar round neck as on n° 32463; flat base into which the sides curve without abrupt transition; protuberance on inside of base.

COLOUR : Pale green.

TECHNIQUE : Mark of separation on base; fault in attachment of collar at one place.

PRESERVATION : Some incrustation on surface.

32465. Vase. — Height 0 m. 097 mill., diam. of rim 0 m. 077 mill. — Mit Rahineh.

Same shape and colour as n° 32464.

TECHNIQUE : Mark on base; the two ends of collar overlap and do not meet.

PRESERVATION : Some incrustation; iridescent on base.

BIBL. : *Journal d'entrée du Musée*, n° 300. . . (illegible).

32466. Vase. — Height 0 m. 095 mill., diam. of rim 0 m. 072 mill.

Same as n° 32464 and n° 32465.

PRESERVATION : Incrusted and iridescent.

32467. Vase. — Height 0 m. 10 c., diam. of rim 0 m. 072 mill. — Bought, 1887 (pl. III).

Similar to n° 32464 with the addition of a small flat-bottomed foot; the sides also do not slope so much.

TECHNIQUE : Mark of separation on base.

PRESERVATION : Iridescent and incrusted.

BIBL. : *Journal d'entrée du Musée*, n° 28137.

32468. Vase. — Height 0 m. 098 mill., diam. of rim 0 m. 07 cent. — Mit Rahineh.

Same as n° 32464-32466 but without a collar.

PRESERVATION : Iridescent here and there; some incrustation.

BIBL. : *Journal d'entrée du Musée*, n° 30089.

32469. Small vase. — Height 0 m. 057 mill., diam. of rim 0 m. 05 cent. (pl. III).

The walls, which are roughly perpendicular, have been pressed in on four sides; the rim spreads outwards and is rather sharp-cut; impressed lines round outside of rim; round-edged base, slightly hollow underneath.

COLOUR : Milky film, perhaps accidental; otherwise colourless except for faint green tinge in base.

PRESERVATION : Intact but rather dirty.

BIBL. : MASPERO, *Slip-catalogue*, n° 3208.

32470. Vase. — Height 0 m. 09 cent., diam. of rim 0 m. 065 mill.

Low-bellied vase with outward-spreading rim and narrow collar round neck as on n° 32464 sq.; the base protrudes inwards. The body, or the lower part of it, is covered with spiral ribbing or fluting (shallow and indistinct).

COLOUR : Pale green.

TECHNIQUE : Mark of separation on base; evidently blown, but not clear whether a mould was used for the ornamentation; ends of collar rather clumsily joined.

PRESERVATION : Iridescent in places and covered largely with incrustation of soil.

32471. Vase. — Height 0 m. 082 mill., diam. of rim 0 m. 06 cent. (pl. III).

Same shape as n° 32470; collar round neck but no ornamentation on lower part of body.

COLOUR : Green tinge.

TECHNIQUE : Mark of separation on base; long flaw in the glass and several air-bubbles.

PRESERVATION : Good deal of incrustation.

32472. Vase. — Height 0 m. 08 c., diam. of rim 0 m. 047 mill. — Bought, 1885 (pl. III).

Of same type as n° 32470, but with less swelling body; several narrow lines in relief round neck; middle of base protrudes inwards.

COLOUR : Pale green tinge originally.

TECHNIQUE : Mark on base; lines round neck rather carelessly applied.

PRESERVATION : Iridescent and incrustated.

BIBL. : *Journal d'entrée du Musée*, n° 26730 (?).

32473. Vase. — Height 0 m. 08 cent., diam. of rim 0 m. 067 mill. — Bought, 1885 (pl. III).

Cup with nearly straight sides, decreasing slightly in diam. towards the top; rim curves slightly outwards; base protrudes inwards in the middle and the edges are rounded as usual.

COLOUR : Pale green tinge.

PRESERVATION : More or less iridescent; slight incrustation.

BIBL. : *Journal d'entrée du Musée*, n° 26732.

32474. Vase. — Height 0 m. 073 mill., diam. of rim 0 m. 07 cent. — Bought, 1885 (pl. III).


Cup with straight sides, narrowing towards top; flat base with rounded edges.

COLOUR : Pale green tinge originally.

PRESERVATION : Covered with incrustation and scum of decomposition; crack on one side.

BIBL. : *Journal d'entrée du Musée*, n° 26733.

32475. Vase. — Height 0 m. 085 mill., diam. 0 m. 09 cent. — Bought (pl. III).

Cup with straight, perpendicular sides and flat base, the edges of which are only slightly rounded. The upper part of body is encircled by a line of lozenges .

COLOUR : Dark green, but not uniform; the various tints run round the body in a winding direction.

TECHNIQUE : Blown fairly thick; the surface of base is rather rough and there is a mark of separation in the middle; flaw in the glass at one place. The lozenges are exactly similar to each other but are badly fitted together, and the lines of the pattern are impressed on the inside as well as on the outside; probably stamped with some instrument.

PRESERVATION : Intact.

BIBL. : *Journal d'entrée du Musée*, n° 30027.

32476. Vase. — Height 0 m. 085 mill., diam. 0 m. 11 cent. — Bought (pl. III).

Similar to n° 32475 but much wider. Pattern of buds and arcs round upper part; the intended design is of this form, but the details are very irregularly applied.

COLOUR : Bluish green, uniform all over.



TECHNIQUE : Mark of separation on base. The arcs have been made with a stamp; the *Catal. du Musée*, n° 32401.

impressed lines are extremely faint on the inside, if indeed they occur at all. The buds have also been put on with a stamp, and without much regard to their proper position at the ends of the arcs; their outlines are impressed both inside and outside (though fainter on the outside), but the small interior circles are impressed on the inside only.

PRESERVATION : Cracked in several places; surface very dirty.

BIBL. : *Journal d'entrée du Musée*, n° 30028.

**32477. Vase.** — Height 0 m. 07 cent., diam. of rim 0 m. 065 mill. (pl. III).

Cup with upright, slightly convex sides curving into slightly hollowed base. The top is encircled by narrow lines of ribbing, and the body is divided into three equal parts by three curly strips of glass descending vertically.

COLOUR : Pale greenish tinge; the ribbing and two of the vertical strips are brown (more or less dark according to the thickness of the glass); the third strip is of the same colour as the rest of the vase.

TECHNIQUE : Very evenly made; mark of separation on base; ornamentation applied separately; one or two large bubbles in glass.

PRESERVATION : Crack on one side; rather dirty.

**32478. Vase.** — Height 0 m. 105 mill., diam. 0 m. 077 mill. (pl. III).

Cup with narrow base (protruding slightly on inside) and widening sides; the rim curves outwards a little.

COLOUR : Pale green tinge originally.

TECHNIQUE : Mark of separation on base.

PRESERVATION : Iridescent and incrustated.

**32479. Vase.** — Height 0 m. 155 mill., diam. 0 m. 08 cent. (pl. III).

Tall narrow vase with small flat base; widens out towards top; sharp-cut rim curving outwards and upwards. A little below the rim is a narrow zone of several very lightly incised lines, and there are two similar bands lower down.

COLOUR : Greenish yellow.

TECHNIQUE : Evenly shaped; rim cut, leaving sharp edges; incised bands quite regular, evidently made with aid of wheel.

PRESERVATION : Intact.

**32480. Vase.** — Height 0 m. 155 mill., diam. 0 m. 08 cent.

Exact replica of n° 32479.

PRESERVATION : Intact; lower end slightly discoloured.



32481. Vase. — Height 0 m. 15 cent., diam. 0 m. 08 cent.

Same as the preceding; base malformed.

PRESERVATION : Intact.

32482. Vase. — Height 0 m. 145 mill., diam 0 m. 078 mill.

Same as preceding; base is quite even.

PRESERVATION : Intact.

32483. Vase. — Height 0 m. 235 mill., diam. 0 m. 10 cent. (pl. III).

Of same general type as n° 32479; rounded rim and small thick projecting base. Encircled near top by several lines of very fine-drawn glass.

COLOUR : Brown tinge at lower end, but base is dark green.

TECHNIQUE : Regularly shaped; mark of separation on base; rings round body have been added separately; good many bubbles in glass.

PRESERVATION : Intact.

32484. Vase. — Height 0 m. 21 cent., diam. 0 m. 10 cent. (pl. III).

Like n° 32483, with rounded rim and base. The upper part is encircled by a large wavy strip of glass with small projections, perhaps a branch; sides slightly concave at this part.

COLOUR : Green tinge, varying to brown towards base.

TECHNIQUE : Similar to n° 32483; very fine-blown.

PRESERVATION : Small break on one side; dirty.

32485. Vase. — Height 0 m. 12 cent., diam. 0 m. 063 mill. — Meir, 1894 (pl. III).

Of same shape as n° 32479, with a small base like that of n° 32483. Encircled near the top by a wavy branch with leaves springing from the upper side. Lines round body as on n° 32479.

COLOUR : Pale green tinge; the branch and leaves are blue.

TECHNIQUE : Sharp-cut rim; no mark on base; fine-blown glass.

PRESERVATION : Small chip in rim.

BIBL. : *Journal d'entrée du Musée*, n° 30853.

32486. Vase. — Height 0 m. 13 cent., diam. 0 m. 067 mill. — Meir, 1894.

SAME as n° 32485; some of the leaves are without stalks and the rim is rather roughly cut.

PRESERVATION : Rim chipped.

BIBL. : *Journal d'entrée du Musée*, n° 30853.

32487. Fragment of vase. — Height 0 m. 11 cent. — Hawara, from the finds of Mr. Petrie, 1888 (pl. III).

FROM a vase of same shape as n° 32485 but larger; sharp-cut rim. Pattern of lozenges or intersecting zigzags round upper part.

COLOUR : Pale green; the pattern is added in lines of blue as on n° 32485.

PRESERVATION : The fragment is from the top of the vase, including part of rim.

BIBL. : *Journal d'entrée du Musée*, n° 28342.

32488. Vase. — Height 0 m. 11 cent., diam. 0 m. 06 cent. (pl. III).

OF same general shape as n° 32479; rounded rim, projecting slightly outwards; lower end blunt-pointed.

COLOUR : Yellow tinge.

TECHNIQUE : Mark of separation at lower end; not very fine glass.

PRESERVATION : Intact.

32489. Vase. — Height 0 m. 108 mill., diam. 0 m. 055 mill.

SIMILAR to n° 32488; good deal of solid glass at lower end.

COLOUR : Green tinge.

TECHNIQUE : Like n° 32488; not very even.

PRESERVATION : Piece broken off top.

32490. Vase. — Height 0 m. 11 cent., diam. 055 mill.

SIMILAR to n° 32488, but rather sharper-pointed.

COLOUR : Yellow tinge.

TECHNIQUE : Mark on base; poor glass, full of bubbles and roughnesses.

PRESERVATION : Intact.

32491. Vase. — Height 0 m. 20 cent., diam. 0 m. 088 mill. (pl. III).

Of same general shape as the preceding, with pointed base and sharp-cut rim curving outwards and upwards. Encircled by a good many fine lines as on n° 32479.

COLOUR : Pale bluish green.

TECHNIQUE : Evenly shaped; rim cut; some flaws in glass.

PRESERVATION : Small chip in rim.

32492. Vase. — Height 0 m. 12 cent., diam. 0 m. 065 mill.

Like n° 32491 but much smaller.

COLOUR : Pale bluish green.

PRESERVATION : Intact.

32493. Vase. — Height 0 m. 125 mill., diam. 0 m. 063 mill. (pl. III).

Like n° 32492 but streaked with blue.

PRESERVATION : Intact.

32494. Vase. — Height 0 m. 125 mill., diam. 0 m. 056 mill.

Same as n° 32492, but without any lines round body.

COLOUR : Pale green.

PRESERVATION : Slightly iridescent film.

32495. Vase. — Height 0 m. 11 cent., diam. 0 m. 055 mill.

Like the preceding, but with rounded rim; no lines round body.

TECHNIQUE : Mark of separation on base.

PRESERVATION : Intact.

32496. Vase. — Height 0 m. 102 mill., diam. 0 m. 055 mill.

Exactly like n° 32495.

PRESERVATION : Intact, but rather dirty.

32497. Vase. — Height 0 m. 112 mill., diam. 0 m. 057 mill.

Same as n° 32495-32496.

PRESERVATION : Intact, but soiled.

32498. Vase. — Height 0 m. 112 mill., diam. 0 m. 057 mill.

Same as n° 32495-32497, but slightly heavier.

PRESERVATION : Intact, but soiled.

32499. Wine-glass. — Height 0 m. 098 mill., breadth 0 m. 07 cent. (pl. IV).

Rather tall bowl with rounded rim, which curves outwards a little; narrow thread of glass round middle of bowl; short stem with flat foot, the upper side of which is covered with scorings.

COLOUR : Brown tinge; purplish spiral stripe round lower part of bowl (not intentional).

TECHNIQUE : Good many air-bubbles; thread round middle attached separately.

PRESERVATION : Crack on one side.

32500. Wine-glass. — Height 0 m. 083 mill., breadth 0 m. 065 mill.

Similar to n° 32499 except that there is no thread round middle of bowl.

COLOUR : Yellowish green tinge.

TECHNIQUE : Good many long air-bubbles; circle of rim very uneven.

PRESERVATION : Intact.

32501. Wine-glass. — Height 0 m. 08 cent., diam. 0 m. 073 mill. (pl. IV).

Shorter, wider bowl than that of n° 32499; thread of glass round middle; very few scorings on foot.

COLOUR : Green tinge.

TECHNIQUE : Thread attached separately; above it are several lines round bowl like marks of turning, probably continuation of thread.

PRESERVATION : Intact.

32502. Wine-glass. — Height 0 m. 08 cent., diam. 0 m. 077 mill.

Similar to n° 32501 in shape and technique. Marks of twisting on stem.

COLOUR : Yellowish green tinge.

PRESERVATION : Intact.

32503. Wine-glass. — Height 0 m. 084 mill., diam. 0 m. 073 mill.

Same shape as n° 32500.

COLOUR : Yellowish green tinge on foot; body almost colourless.

TECHNIQUE : Mark of separation on base; a few air-bubbles.

PRESERVATION : Long crack down one side; rather dirty.

**32504. Wine-glass.** — Height 0 m. 095 mill., diam. 0 m. 08 cent. (pl. IV).

Same shape as n° 32500 and n° 32503.

COLOUR : Bluish green.

TECHNIQUE : Rather uneven in shape; the stem is aslant and has made a dent on base of bowl; mark on base (?).

PRESERVATION : Intact.

**32505. Wine-glass.** — Height 0 m. 125 mill., diam. 0 m. 075 mill. — Fayoum (label) (pl. IV).

The sides of the bowl are slightly convex and there is a doubled-over rim round top; the base of the bowl is seated on a thick-rimmed saucer surmounting a tall tapering stem with spreading foot.

COLOUR : Pale blue or bluish green.

TECHNIQUE : Mark on base.

PRESERVATION : Glass rather filmy.

BIBL. : *Notice*, 1892-1897, n° 322.

**32506. Vase.** — Height 0 m. 09 cent., breadth 0 m. 098 mill. (pl. IV).

Rather globular bowl with wide mouth and concave neck; stands on spreading foot with usual markings on upper side; ornamented with several narrow lines in low relief round shoulder.

COLOUR : Green tinge.

TECHNIQUE : Very evenly shaped; mark of separation on base; mark of turning-over on rim; lines round shoulder applied as usual.

PRESERVATION : Intact.

**32507. Vase.** — Height 0 m. 105 mill., breadth 0 m. 108 mill. (pl. IV).

General shape like that of n° 32506, with short neck and spreading foot of usual type; the rim is doubled-over and is comparatively thick; lines in relief round middle of body; on each side an undulating strip of glass descends from rim to lower part of body, the top of it being twisted over into the form of a small handle.

COLOUR : The main part of the vase is light purple, and the strips down each side are green.

TECHNIQUE : Evenly shaped; mark of separation on base; lines round body rather carelessly applied in one long spiral; green strips of course attached separately.

PRESERVATION : Intact.

**32508. Vase.** — Height 0 m. 088 mill., breadth 0 m. 095 mill. (pl. IV).

Round-bodied vase with neck and rather sharp-edged, inward-curving rim; stands on spreading foot with usual markings on upper side. A strip of glass is applied in large roughly shaped zigzags round middle of body, and on each side is a broad vertical strip, the upper part of which is twisted into the shape of a small handle.

COLOUR : Yellowish green.

TECHNIQUE : Shape not very even; mark of separation on base; handles and ornamentation attached as usual, the former after the latter; pressed in on one side by application of pattern.

PRESERVATION : Slight breaks on one handle and on pattern; rim chipped a little.

**32509. Vase.** — Height 0 m. 095 mill., breadth 0 m. 09 cent. (pl. IV).

Round-bodied vase with in-drawn neck and wide-spreading rim; the rim has a rounded edge and seems to be doubled inwards; foot of usual type; open-work zigzag pattern between shoulder and edge of rim.

COLOUR : Green.

TECHNIQUE : Evenly shaped; mark on base; ornamentation attached as usual.

PRESERVATION : End of zigzag strip broken off.

**32510. Vase.** — Height 0 m. 13 cent., breadth 0 m. 11 cent.

Vase of same general type as n° 32509 with large neck and wide-spreading rim; edge of rim doubled inwards; spreading foot with rather faint markings. A thread of glass is coiled several times round upper part of neck (rather roughly), and there is a zigzag strip between rim and shoulder as on n° 32509. Mark on base.

COLOUR : Main part of vase yellowish green; zigzag strip a purer green.

PRESERVATION : Large chip on rim.

**32511. Vase.** — Height 0 m. 14 cent., breadth 0 m. 12 cent.

Same shape as n° 32509 but with less flat rim and comparatively small foot. The sides are pressed-in in four or five places, rather roughly; there is a fairly thick ring round outside of neck; zigzag pattern between rim and shoulder as on n° 32509.

COLOUR : Yellowish green.

TECHNIQUE : Like n° 32509.

PRESERVATION : Fragment broken out of middle of body and large piece of plaster attached to outside; surface dirty.

**32512. Vase.** — Height 0 m. 125 mill., breadth 0 m. 10 cent. (pl. IV).

Similar to n° 32509 fl.; rim like that of n° 32511. The sides are pressed-in in five places; fairly thick strip coiled irregularly round neck; zigzag pattern between rim and shoulder as on n° 32509.

COLOUR AND TECHNIQUE : Like n° 32509.

PRESERVATION : Intact.

**32513. Vase.** — Height 0 m. 124 mill., diam. 0 m. 11 cent.

Very similar to n° 32510 but without any ring round neck; fairly deep marking on foot.

COLOUR : Green.

TECHNIQUE : Mark on base.

PRESERVATION : Mended break on one side.

**32514. Vase.** — Height 0 m. 085 mill., breadth 0 m. 07 cent.

Small vase like n° 32509; rim doubled inwards; sides pressed-in in six places; thin strip coiled several times round outside of neck; zigzag pattern between neck and shoulder as on n° 32509.

COLOUR AND TECHNIQUE : Like n° 32509; flaw in glass at one place.

PRESERVATION : Intact.

**32515. Vase.** — Height 0 m. 10 cent., breadth 0 m. 065 mill. (pl. IV).

Like n° 32509, but with taller, narrower body; sides pressed-in in six places; rim like that of n° 32509; usual zigzag pattern between rim and shoulder.

COLOUR : Yellowish green; zigzag strip a purer green but streaky.

TECHNIQUE : Like n° 32509.

PRESERVATION : Intact.

**32516. Vase.** — Height 0 m. 074 mill., breadth 0 m. 08 cent. (pl. IV).

Wide-mouthed little vase with drawn-in neck and spreading rim with thick rounded edge; widens slightly from base to shoulder; rather sharp curve at shoulder; ring-

foot, slightly spreading, with faint markings on upper side; zigzag pattern between rim and shoulder as on n° 32509.

COLOUR : Blue; zigzag strip green.

TECHNIQUE : Mark on base; several long bubbles and flaws.

PRESERVATION : Slightly cracked in two places.

**32517. Small vase.** — Height 0 m. 052 mill., breadth 0 m. 055 mill. (pl. IV).

Like n° 32514 but without any foot, the base being slightly hollow underneath; sides pressed-in in five or six places; rounded rim; zigzag pattern between rim and shoulder.

COLOUR : Pure green tinge.

TECHNIQUE : Like n° 32509.

PRESERVATION : Intact.

**32518. Vase.** — Height 0 m. 035 mill., breadth 0 m. 04 cent. — Labyrinth, Oct. 1862 (pl. IV).

Tiny vase of same general shape as n° 32517 but without the zigzag ornament; slight concave curve in outline of body; hollow in base; rounded rim (doubled inwards?).

COLOUR : Colourless except for whitish film.

PRESERVATION : Intact.

BIBL. : MASPERO, *Slip-Catalogue*, n° 3162; *Journal d'entrée du Musée*, n° 19943.

**32519. Vase.** — Height 0 m. 047 mill., breadth 0 m. 05 cent. (pl. IV).

Small vase of same type as n° 32518; round body; hollow in base; impressed vertical lines round upper part of body, very faint.

COLOUR : Colourless.

TECHNIQUE : Fine-blown glass but with rather rough surface; rim of irregular thickness.

PRESERVATION : Intact.

**32520. Vase<sup>(1)</sup>.** — Height 0 m. 059 mill., breadth 0 m. 05 cent. — Hawara, from the finds of Mr. Petrie, 1888 (pl. IV).

Small vase of same type as n° 32519 but less squat: round bottom with small hollow in centre; decorated with incised lines, fairly broad and firmly cut, one round neck, one round shoulder, two round middle of body and one round lower part.

<sup>(1)</sup> From the same tomb as n° 32525, 32537, 32593.



COLOUR : Faint green tinge.

TECHNIQUE : Very evenly shaped; mark of separation on base; irregular rim. The glass is comparatively thick and the lines have been cut on the hardened surface.

PRESERVATION : Inside incrustated.

BIBL. : *Journal d'entrée du Musée*, n° 28334.

32521. Vase. — Height 0 m. 057 mill., breadth 0 m. 05 cent. (pl. IV).

Like n° 32519 but with longer neck; rather large rim; impressed vertical lines round body.

COLOUR : Almost colourless; faint green tinge on rim.

TECHNIQUE : Thin-blown; not very even.

PRESERVATION : Slightly iridescent on one side.

32522. Vase. — Height 0 m. 033 mill., breadth 0 m. 038 mill. (pl. IV).

Tiny vase of same type as n° 32518 but less squat; profile of body slightly concave; large rounded rim with line on inside.

COLOUR : Whitish.

PRESERVATION : Somewhat iridescent; incrustated in places.

32523. Vase. — Height 0 m. 09 cent., breadth 0 m. 093 mill. (pl. IV).

Larger vase of same type as the preceding; broadest across upper part of body; concave base; neck spreads outwards and ends in a large doubled-over rim as on n° 32518.

COLOUR : Green.

PRESERVATION : Slightly iridescent.

32524. Vase. — Height 0 m. 051 mill., breadth 0 m. 047 mill. (pl. IV).

Same type as the preceding; round body and slightly convex base; neck spreads outwards; the body is covered with spiral ribbing, the lines of which have been drawn upwards from base and taper off towards the neck.

COLOUR : Faint green tinge, but almost colourless.

PRESERVATION : Intact.

BIBL. : MASPERO, *Slip-Catalogue*, n° 3209.

32525. Vase. — Height 0 m. 097 mill., breadth 0 m. 073 mill. — Hawara, Mr. Petrie, 1888<sup>(1)</sup> (pl. IV).

Of same type as the preceding, but narrower in proportion to its size; hollow in base; no sharp curve between neck and shoulder; rim as on n° 32523; the lower part is decorated with vertical lines in relief at about 0 m. 02 cent. distance from each other.

COLOUR : Colourless except for whitish film.

TECHNIQUE : Very evenly shaped; slight flaws in the glass.

PRESERVATION : Intact but dirty.

BIBL. : *Journal d'entrée du Musée*, n° 28332.

32526. Vase. — Height 0 m. 045 mill., breadth across top 0 m. 038 mill. (pl. IV).

Of same type as n° 32525, but with larger neck in proportion to its size; the rim has been doubled inwards and has a projecting edge on the inside; usual hollow in base.

COLOUR : Green tinge.

TECHNIQUE : Rather unevenly shaped; mark of separation on base.

PRESERVATION. Small crack on one side; slight iridescence in places.

32527. Vase. — Height 0 m. 04 cent., breadth across top 0 m. 035 mill. (pl. IV).

Small vase with drawn-in neck and spreading rim; greatest breadth across upper part of body; slight hollow in base; rim flat on top (doubled back).

COLOUR : Colourless except for whitish film.

TECHNIQUE : Perfectly even; cloud of small bubbles on one side.

PRESERVATION : Intact.

BIBL. : MASPERO, *Slip-catalogue*, n° 3189.

32528. Vase. — Height 0 m. 04 cent., breadth across top 0 m. 039 mill.

Similar to n° 32527 but with shorter neck; profile of sides slightly concave.

COLOUR : White film on the glass.

TECHNIQUE : Not so even as n° 32527.

PRESERVATION : Inside incrustated and discoloured.

<sup>(1)</sup> From same tomb as n° 32520, 32537, 32593.

32529. Vase. — Height 0 m. 055 mill., breadth across top 0 m. 045 mill. (pl. IV).

Small vase with straight, perpendicular sides, drawn-in neck and wide-spreading mouth; base slightly concave. The sides are fluted vertically.

COLOUR : Originally colourless.

TECHNIQUE : Fine-blown but not very even; rim finished off rather irregularly.

PRESERVATION : Slight iridescence on one side.

32530. Vase. — Height 0 m. 058 mill., breadth across top 0 m. 041 mill.

Like n° 32529 but with shorter body and longer neck.

COLOUR AND TECHNIQUE : Like n° 32529; rim very uneven, being plain on one side and doubled inwards on the other; many small bubbles in glass.

PRESERVATION : Intact; rather dirty.

32531. Vase. — Height 0 m. 06 cent., breadth 0 m. 048 mill. (pl. IV).

Small, squat-bellied vase with long, slightly widening neck and doubled-in rim; large hollow in base.

COLOUR : Green, like n° 32526.

TECHNIQUE : Several flaws and dents in the glass.

PRESERVATION : Mended break on neck; two or three long cracks in body; dirty.

32532. Tiny vase. — Height 0 m. 035 mill., breadth across top 0 m. 028 mill. (pl. IV).

For shape see illustration.

COLOUR : Green tinge in base, otherwise colourless.

TECHNIQUE : Very uneven; mark of separation on base; rim doubled inwards.

PRESERVATION : Intact.

32533. Tiny vase. — Height 0 m. 032 mill., breadth across top 0 m. 025 mill.

Like n° 32532, but without any bulge in middle of body.

COLOUR : Nearly colourless.

TECHNIQUE : Rather uneven; rim doubled in; flaw in glass.

PRESERVATION : Intact.

BIBL. : MASPERO, *Slip-catalogue*, n° 3154 (?).

32534. **Tiny jar.** — Height 0 m. 04 cent., breadth across top 0 m. 028 mill.  
(pl. IV).

Large neck and rounded rim, tapering sides, small base.

COLOUR : Streaky white.

TECHNIQUE : Unevenly shaped; mark on base; rim doubled inwards.

PRESERVATION : Intact.

32535. **Tiny vase.** — Height 0 m. 047 mill., breadth across top 0 m. 028 mill.  
(pl. IV).

Narrow vase with pointed base, slightly drawn-in neck and rounded rim.

COLOUR : Green; darker streaks about neck.

TECHNIQUE : Neck very badly made; rim doubled inwards.

PRESERVATION : Intact.

32536. **Tiny vase.** — Height 0 m. 038 mill., breadth across top 0 m. 026 mill.  
(pl. IV).

Narrow vase with slightly convex sides, large neck, and doubled-in rim; neck and body separated by a slight depression.

COLOUR : Slight green tinge, but nearly colourless.

TECHNIQUE : Not very even; mark on base.

PRESERVATION : Intact.

32537. **Small jar.** — Height 0 m. 062 mill., breadth across top 0 m. 031 mill.  
— Hawara, Mr. Petrie, 1888<sup>(1)</sup> (pl. IV).

Narrow little vase with slightly concave sides, sloping shoulders, and spreading mouth with rounded rim.

COLOUR : Green.

TECHNIQUE : Mark on base; rim doubled inwards.

PRESERVATION : Incrusted and discoloured on inside.

BIBL. : *Journal d'entrée du Musée*, n° 28333.

32538. **Tiny vase.** — Height 0 m. 04 cent., breadth 0 m. 025 mill. (pl. IV).

Like n° 32533 but with longer neck.

<sup>(1)</sup> From same tomb as n° 32520, 32525, 32593.

COLOUR : Pale brown tinge(?).

TECHNIQUE : Badly made, neck twisted and base left very rough; rim doubled inwards.

PRESERVATION : Incrusted on inside.

BIBL. : MASPERO, *Slip-Catalogue*, n° 3088.

**32539. Tiny vase.** — Height 0 m. 02<sup>1</sup>/<sub>4</sub> mill., breadth 0 m. 023 mill. (pl. IV).

Squat body and comparatively long neck, widening towards top.

COLOUR : Pale green tinge.

TECHNIQUE : Mark on base.

PRESERVATION : Intact.

**32540. Jug.** — Height 0 m. 182 mill., breadth 0 m. 08 cent. — Bought, 1885 (pl. V).

Cylindrical body, widening very slightly towards shoulder; flat base; narrow neck with turned-over rim and depression round lower end. Broad, sharp-angled handle with three flutings on outside; it widens out at lower end; the two outer flutings are open below and the two inner ribs end in sharp points like claws; the upper end is attached to top of neck, and the doubled-over tip is stuck vertically against rim. The body is encircled by three horizontal grooves at some distance from each other.

COLOUR : Pale bluish green.

TECHNIQUE : Very evenly shaped; rim apparently turned over and then doubled upwards; handle of course made separately. The grooves have been cut with the aid of a wheel, and there are narrow wheel-made lines all the way up to shoulder.

PRESERVATION : Slightly iridescent; surface more or less incrustated.

BIBL. : *Journal d'entrée du Musée*, n° 26869.

**32541. Jug.** — Height 0 m. 178 mill., breadth 0 m. 057 mill. — Bought, 3 December 1884(?) (pl. V).

Tall rectangular body; flat base, ornamented with two concentric circles in relief; slight concavity round top of shoulder; round neck and flat projecting rim; broad, sharp-angled handle with groove down outside.

COLOUR : Pale green.

TECHNIQUE : Made of thick streaky glass and quite evenly shaped; rim doubled inwards; handle attached.

PRESERVATION : Iridescent.

BIBL. : *Journal d'entrée du Musée*, n° 26405(?).

32542. Jug. — Height 0 m. 21 cent., breadth 0 m. 07 c. — Gournah. Dec. 1859 (pl. V).

Rectangular body with the sharp edges rounded off at shoulder; flat or slightly concave base; round neck; spreading mouth with ring round underside; broad handle, fluted on outside.

COLOUR : Green; handle and ring below mouth nearly black.

TECHNIQUE : Fairly thick glass with rather rough surface; evenly shaped; handle and ring attached.

PRESERVATION : Inside incrustated with some dark substance, making the glass look much darker than it really is.

BIBL. : MASPERO, *Slip-catalogue*, n° 3202; *Journal d'entrée du Musée*, n° 6189.

32543. Jug. — Height 0 m. 175 mill., breadth 0 m. 073 mill. (pl. V).

Cylindrical body with slight depression just below shoulder; concave base; narrowing neck and spreading mouth; very broad flat handle with upper end doubled back; a round strip of glass is coiled round upper part of neck, ending on lower edge of rim.

COLOUR : Yellowish green; handle paler and without any tinge of yellow.

TECHNIQUE : Evenly shaped; mark of separation on base; handle and ring attached.

PRESERVATION : Inside incrustated with dirt.

32544. Jug. — Height 0 m. 185 mill., breadth 0 m. 075 mill.

Similar to n° 32543 in every respect.

PRESERVATION : Inside incrustated with dirt.

32545. Jug. — Height 0 m. 14 cent., breadth 0 m. 057 mill. — Fayoum (*Journal*) (pl. V).

Same type as n° 32543; narrows slightly towards base; bulge round shoulder; ring below mouth; flat handle, very broad at lower end.

COLOUR : Green.

TECHNIQUE : Like n° 32543, but without mark on base.

PRESERVATION : Long crack down one side.

BIBL. : *Journal d'entrée du Musée*, n° 29825; labelled 6811.

32546. Jug. — Height 0 m. 18 cent., breadth 0 m. 077 mill. (pl. V).

Oval body, standing on spreading foot with slanting impressions; long neck and

spreading mouth; ring round lower part of neck and coil of several rings round upper. Flat handle, very broad at lower end; the lower end is turned inwards, and the upper end is turned in and doubled back. Round lower part of body the circumference is pressed in on six sides.

COLOUR : Yellowish green.

TECHNIQUE : Mark of separation on base; rings and handle attached.

PRESERVATION : Slight crack on one side; inside discoloured with soil.

**32547. Jug.** — Height 0 m. 16 cent., breadth 0 m. 08 cent.

Like n° 32546 but with trefoil mouth; sides more deeply pressed in.

COLOUR AND TECHNIQUE : Like n° 32546; slightly greener.

PRESERVATION : Some incrustation on inside.

**32548. Jug.** — Height 0 m. 175 mill., breadth 0 m. 08 cent.

Similar to n° 32546, but with single long coil round upper part of neck; thick rim; sides pressed in as on n° 32547.

COLOUR AND TECHNIQUE : Like n° 32546-32547.

PRESERVATION : Good deal of incrustated dirt on surface.

**32549. Jug.** — Height 0 m. 155 mill., breadth 0 m. 08 cent. (pl. V).

Same type as n° 32547 but with larger neck; handle projects more; pinched in on seven sides.

COLOUR AND TECHNIQUE : Like n° 32546-32548.

PRESERVATION : Crack on one side; inside incrustated with dirt.

**32550. Jug.** — Height 0 m. 09 cent., breadth 0 m. 063 mill. (pl. V).

Small, squat-bodied vase with long neck and spreading mouth; concave base; sharp-angled handle of same type as on n° 32546; thick ring round top of neck and thin coil lower down.

COLOUR : Pale green tinge.

TECHNIQUE : Evenly made; mark of separation on base; rim doubled inwards; handle and rings attached. Good many air-bubbles in glass.

PRESERVATION : Intact.

*Catal. du Musée, n° 32401.*

**32551. Jug.** — Height 0 m. 069 mill., breadth 0 m. 05 cent.

Small vase like n° 32550; very sharp-angled handle; thin coil round top of neck.

COLOUR AND TECHNIQUE : Like n° 32550; several flaws in the glass.

PRESERVATION : Intact.

**32552. Jug.** — Height 0 m. 128 mill., breadth 0 m. 082 mill. (pl. V).

Small jug with long neck, squat body and broad base (concave underneath); the neck narrows and then spreads out into a fairly wide mouth; thick handle of same type as on n° 32546 fl. with groove down back; ring round top of neck and thin coil round foot.

COLOUR : Pale bluish green originally; handle a deeper green.

TECHNIQUE : Evenly made; mark of separation on base.

PRESERVATION : Decomposed and iridescent.

**32553. Small jug.** — Height 0 m. 067 mill., breadth 0 m. 045 mill. (pl. V).

Round body and concave base; funnel neck widening slightly at top; handle of usual type; long narrow coil round top of neck.

COLOUR : Yellowish green tinge.

TECHNIQUE : Not very even; mark on base; dark blotches in glass.

PRESERVATION : Intact.

**32554. Amphora.** — Height 0 m. 188 mill., breadth 0 m. 11 cent. (pl. V).

Stands on spreading foot with slanting impressions on upper side; body curves into neck without any distinct transition and neck spreads out into mouth; rather irregularly twisted handles; ring round neck.

COLOUR : Green with yellowish tinge.

TECHNIQUE : Mark of separation on base; rim doubled in on one side; separately attached accessories.

PRESERVATION : Intact.

**32555. Amphora.** — Height 0 m. 21 cent., breadth 0 m. 095 mill. (pl. V).

Foot like that of n° 32554; body more or less globular; long neck widening at top; rounded rim; vertical handles attached against neck; long coil round neck.

COLOUR : Yellowish green.

TECHNIQUE : Mark on base; rim doubled in; accessories attached. Flaw on neck.

PRESERVATION : Discolouring incrustation on inside.



**32556. Small amphora.** — Height 0 m. 09 cent., breadth 0 m. 07 cent. — Mit Rahineh (pl. V).

Globular body with slightly concave base; narrow neck and rounded, projecting rim; sharp-angled handles, curved at top and ending below in thick blobs.

COLOUR: Greenish yellow.

TECHNIQUE: Mark of separation on base; rim doubled inwards.

PRESERVATION: Surface partly incrustated with dirt.

BIBL.: *Journal d'entrée du Musée*, n° 30098.

**32557. Amphora.** — Height 0 m. 15 cent., breadth 0 m. 085 mill. (pl. V).

Foot like that of n° 32554; greatest width across upper part of body; funnel neck, widening slightly at top; twisted handles as on n° 32554; ring round foot of neck and coil of five rings round top.

COLOUR: Green.

TECHNIQUE: Mark of separation on base; separately attached accessories.

PRESERVATION: One handle and part of neck broken off; inside dirty.

**32558. Bottle.** — Height 0 m. 215 mill., breadth 0 m. 135 mill. (pl. VI).

Broad-based body with greatest width nearer to base than to neck; base slightly concave; long neck with depression round foot and spreading mouth with doubled-in rim; thick collar round upper part of body with semicircular projections pinched out at intervals.

COLOUR: Pale green tinge.

TECHNIQUE: Evenly shaped; no mark on base; collar of course added separately. One or two flaws in glass and a good many small air-bubbles.

PRESERVATION: Perfect.

**32559. Bottle.** — Height 0 m. 215 mill., breadth 0 m. 135 mill.

Same as n° 32558 in every respect.

PRESERVATION: Perfect.

**32560. Bottle.** — Height 0 m. 205 mill., breadth 0 m. 135 mill.

Like n° 32558 except that body is more globular; small vertical lines in relief at intervals round middle of body; collar like that of n° 32558.

COLOUR : Pale green with yellowish tinge.

TECHNIQUE : Like n° 32558.

PRESERVATION : Slight iridescence on one side; rather dirty inside.

**32561. Bottle.** — Height 0 m. 145 mill., breadth 0 m. 085 mill.

Same shape as n° 32558 and with similar collar.

COLOUR : Yellowish tinge; collar green.

TECHNIQUE : Fine-blown glass; evenly shaped except that rim is badly finished off; no mark on base.

PRESERVATION : One side of body broken; dark substance in neck.

**32562. Bottle.** — Height 0 m. 15 cent., breadth 0 m. 09 cent. (pl. VI).

Similar to n° 32558, but less globular; concave base; neck and collar like those of n° 32558.

COLOUR : Yellow tinge; collar green.

TECHNIQUE : Mark of separation on base; one side of rim doubled in.

PRESERVATION : Rather dirty inside.

**32563. Bottle.** — Height 0 m. 07¼ mill., breadth 0 m. 062 mill.

Similar to n° 32562 in every respect.

PRESERVATION : Neck entirely broken off.

**32564. Bottle.** — Height 0 m. 103 mill., breadth 0 m. 06 cent.

Same type as n° 32562; deep depression round foot of neck; ring round underside of mouth, and usual collar.

COLOUR : Nearly transparent originally (?); collar green.

TECHNIQUE : Like n° 32562.

PRESERVATION : Iridescent.

**32565. Bottle.** — Height 0 m. 175 mill., breadth 0 m. 11 cent. — Fayoum (label) (pl. VI).

Globular body with concave base; narrow neck, widening out above like a reversed cone; doubled-in rim; ring round foot of neck; row of elliptical impressions round middle of body.

COLOUR : Nearly colourless; the ring is green.

TECHNIQUE : Fine-blown and evenly shaped; the rim is not well finished off, and the impressions on body are rather irregular; collar attached.

PRESERVATION : Intact but dirty.

BIBL. : *Notice*, 1892-1897, n° 328.

- 32566. Bottle.** — Height 0 m. 165 mill., breadth 0 m. 11 cent. — Bought, 21 May 1887 (pl. VI).

Similar to n° 32565 except that body is encircled by short vertical lines in relief at about 0 m. 05 cent. from each other.

COLOUR : Pale green.

TECHNIQUE : Evenly shaped; full of small air-bubbles.

PRESERVATION : Rim broken.

BIBL. : *Journal d'entrée du Musée*, n° 27791.

- 32567. Large bottle.** — Height 0 m. 26 cent., breadth 0 m. 20 cent. — Bought, 27 October 1887.

Wide body with greatest diameter a little above the middle; concave base; depression round foot of neck; slightly narrowing neck and spreading mouth with ring round underside. Very evenly shaped.

COLOUR : Bluish green.

PRESERVATION : Iridescent in places.

BIBL. : *Journal d'entrée du Musée*, n° 28131.

- 32568. Bottle.** — Height 0 m. 205 mill., breadth 0 m. 15 cent. — Bought, 27 October 1887 (pl. VI).

Same shape as n° 32567 except that body is more globular; slight bulge round outside of mouth; upper part of body is covered with spiral ribbing (very indistinct).

COLOUR : Pale green.

TECHNIQUE : Evenly shaped; not clear how ornamentation has been put on; no trace of piece-mould.

PRESERVATION : Large part of surface covered with incrustation.

BIBL. : *Journal d'entrée du Musée*, n° 28132.

- 32569. Bottle.** — Height 0 m. 155 mill., breadth 0 m. 14 cent. — Bought, 27 October 1887.

Like n° 32568, but wider and shorter in proportion; spiral ribbing or fluting round upper part.

TECHNIQUE : Like n° 32568; spiral marks about shoulder and neck.

PRESERVATION : Mouth broken off; iridescent all over; inside choked up with soil.

BIBL. : *Journal d'entrée du Musée*, n° 28136.

**32570. Bottle.** — Height 0 m. 085 mill., breadth 0 m. 093 mill. (pl. VI).

Wide, flat body with slightly concave base; narrow neck and projecting, doubled-in rim; slight depression round foot of neck; middle of body is encircled by faintly impressed vertical flutings.

COLOUR : Green.

TECHNIQUE : Not very even; tool-marks round foot of neck.

PRESERVATION : Intact.

**32571. Bottle.** — Height 0 m. 195 mill., breadth 0 m. 125 mill. (pl. VI).

For shape see illustration; broad, concave base; tapering neck, surmounted by large flat rim. The body is covered with a lozenge pattern formed by lines in low relief; impressed band round base, at lower end of pattern.

COLOUR : Almost colourless; slight green tinge.

TECHNIQUE : Perfectly even; mark of separation on base; no trace of piece-mould.

PRESERVATION : Intact but dirty.

BIBL. : *Journal d'entrée du Musée*, n° 32961.

**32572. Bottle.** — Height 0 m. 08 cent., breadth 0 m. 062 mill. — Bought, 3 December 1884 (pl. VI).

Round body covered with small round studs; base sufficiently flattened to stand on; narrow neck and spreading mouth.

TECHNIQUE : Body blown in a bipartite mould, the suture of which is very conspicuous; neck added separately.

PRESERVATION : Rim broken; iridescent and dirty.

BIBL. : *Journal d'entrée du Musée*, n° 26400.

**32573. Small bottle.** — Height 0 m. 08 cent., breadth 0 m. 045 mill. — Bought, September 1891 (pl. VI).

The body is composed of two masks back to back; the faces are framed by flowing hair, rendered by small round studs; both are beardless. Flat base; long neck and spreading mouth.

COLOUR : Pale green originally (?).

TECHNIQUE : Body blown in a bipartite mould.

PRESERVATION : Rim broken; covered with iridescence.

BIBL. : *Journal d'entrée du Musée*, n° 2944.

32574. **Small bottle.** — Height 0 m. 058 mill., breadth 0 m. 043 mill. — Hawara, Mr. Petrie, 1887-1888 (pl. VI).

Pear-shaped body with broad, flat base; narrow neck with depression round lower end; both body and neck are covered with spiral ribbing.

COLOUR : Almost colourless originally; faint green tinge about base.

TECHNIQUE : Mark on base; ribbing made by twisting thin strips round body from base upwards; rather irregularly applied.

PRESERVATION : Rim broken off; inside dirty.

BIBL. : *Journal d'entrée du Musée*, n° 2833g.

32575. **Tiny bottle.** — Height 0 m. 025 mill., breadth 0 m. 025 mill.

Pear-shaped body ornamented with vertical ribbing, rather wide apart.

COLOUR : Pale blue.

PRESERVATION : Neck broken off.

BIBL. : MASPERO, *Guide*, 1883, p. 112, n° 3149.

32576. **Tiny bottle.** — Height 0 m. 053 mill., breadth 0 m. 036 mill.

Same shape as n° 32571 so far as preserved, but without any ornamentation.

COLOUR : Originally colourless.

TECHNIQUE : Mark on base.

PRESERVATION : Rim broken off; iridescent.

32577. **Tiny bottle.** — Height 0 m. 039 mill., breadth 0 m. 03 cent. — Bought (pl. VI).

Cylindrical neck and globular body. The body is covered with impressed lozenges (cf. n° 32571); there is a slight depression round middle of neck, above and below which are impressed slanting lines; impressed lines round root of neck and studs on base.

COLOUR : Almost colourless.

TECHNIQUE : Like n° 32571.

PRESERVATION : Rim chipped; inside dirty.

BIBL. : *Journal d'entrée du Musée*, n° 29884.

32578. **Bottle.** — Height 0 m. 128 mill., breadth 0 m. 105 mill.

Globular body with unusually concave base; narrow neck.

COLOUR: Faint bluish tinge.

PRESERVATION: Upper part of neck broken off; surface incrustated.

32579. **Bottle.** — Height 0 m. 185 mill., breadth 0 m. 135 mill. (pl. VI).

Globular body with small, slightly concave base; narrow cylindrical neck with depression round lower end. Both body and neck are encircled at intervals by sets of narrow lines.

COLOUR: Pale bluish green originally (?).

TECHNIQUE: Very evenly shaped; lines apparently incised by aid of wheel on the hard glass.

PRESERVATION: Iridescent and incrustated in places.

BIBL.: *Journal d'entrée du Musée*, n° 26398 (?).

32580. **Bottle.** — Height 0 m. 11 cent., breadth 0 m. 072 mill.

Same shape as n° 32579; slightly bulging rim.

COLOUR: Pale bluish green.

PRESERVATION: Hole in one side; incrustated in places and slightly iridescent.

BIBL.: *Journal d'entrée du Musée*, n° 26339 (?).

32581. **Bottle.** — Height 0 m. 093 mill., breadth 0 m. 065 mill.

Similar in shape to n° 32579-32580 except that neck is thicker in comparison and widens out slightly at top.

PRESERVATION: Iridescent all over; inside incrustated.

32582. **Small bottle.** — Height 0 m. 056 mill., breadth 0 m. 049 mill.

Wide body with slightly concave base and narrow neck. Comparatively thick glass.

COLOUR: Pale blue.

PRESERVATION: Top of neck broken off.

32583. **Small bottle.** — Height 0 m. 072 mill., breadth 0 m. 047 mill.

Broad concave base, long neck with widening mouth.

COLOUR: Colourless.

TECHNIQUE: Rather unevenly shaped; glass full of small bubbles and not quite pure.

PRESERVATION: Base broken and cracked; inside dirty.

32584. **Bottle.** — Height 0 m. 1 1/4 cent., breadth 0 m. 085 mill. — Bought, 27 October 1887 (pl. VI).

Long, slightly narrowing neck and spreading mouth with turned-in rim; widest across upper part of body; flat base.

COLOUR : Pale green.

TECHNIQUE : Evenly shaped; good work.

PRESERVATION : One side of mouth broken off; iridescent and incrustated.

BIBL. : *Journal d'entrée du Musée*, n° 28134.

32585. **Bottle.** — Height 0 m. 1 1/5 mill., breadth 0 m. 085 mill. — Bought, 27 October 1887 (pl. VI).

Long neck widening towards top and slightly bulging rim; wide body and concave base.

COLOUR : Pale green.

TECHNIQUE : Evenly made; like n° 32584.

PRESERVATION : Iridescent on one side; surface partly incrustated.

BIBL. : *Journal d'entrée du Musée*, n° 28135.

32586. **Bottle.** — Height 0 m. 16 cent., breadth 0 m. 1 1/5 mill. (pl. VI).

Long wide neck with spreading mouth and doubled-in rim; wide flat body and concave base.

COLOUR : Greenish yellow tinge.

TECHNIQUE : Evenly made; mark of separation on base; good many impurities in the glass.

PRESERVATION : Inside incrustated.

32587. **Bottle.** — Height 0 m. 10 cent., breadth 0 m. 08 1/4 mill. — Bought, 1885 (pl. VI).

Pear-shaped body with flat base; short neck with depression round lower end and spreading mouth.

COLOUR : Greenish yellow originally (?).

TECHNIQUE : Evenly made; good work.

PRESERVATION : Iridescent and incrustated.

BIBL. : *Journal d'entrée du Musée*, n° 26868.

*Catal. du Musée*, n° 32401.

32588. **Bottle.** — Height 0 m. 125 mill., breadth 0 m. 185 mill. — Fayoum (pl. VI).

Pear-shaped body; flat base; depression round junction of neck and body; spreading mouth with thick ring round underside. The body is ornamented with faintly marked, vertical flutings.

COLOUR : Pale green.

TECHNIQUE : Truly shaped; ring below rim added separately.

PRESERVATION : Intact.

BIBL. : *Journal d'entrée du Musée*, n° 29823; labelled n° 6809.

32589. **Bottle.** — Height 0 m. 19 cent., breadth 0 m. 147 mill.

Larger vase of same type as n° 32588, but with concave base and without fluting on body.

COLOUR : Green.

TECHNIQUE : Not so even as n° 32588; mark of separation on base; tool-marks at lower end of neck; ring added separately; rim doubled in.

PRESERVATION : Inside dirty.

32590. **Bottle.** — Height 0 m. 112 mill., breadth 0 m. 07 cent. — Fayoum (pl. VI).

Same type as n° 32588; base slightly concave and surrounded by a thick ring; no fluting on body; thick ring round underside of mouth and long thin coil immediately below.

COLOUR : The rings are green, but the rest of the vase seems to have been nearly colourless originally.

TECHNIQUE : Evenly shaped; mark on base; rings and coil added separately.

PRESERVATION : Inside incrustated.

BIBL. : *Journal d'entrée du Musée*, n° 29824; labelled n° 6810.

32591. **Bottle.** — Height 0 m. 15 cent., breadth 0 m. 095 mill. (pl. VII).

Pear-shaped vessel with slightly widening neck; rim rounded inwards; flat base. The body is decorated with vertical lines in relief at about 0 m. 02 cent. from each other.

COLOUR : Colourless.

TECHNIQUE : Thin-blown and evenly shaped.

PRESERVATION : Iridescent on one side; good deal of incrustation.



32592. **Bottle.** — Height 0 m. 275 mill., breadth 0 m. 143 mill. — Koptos (pl. VII).

Pear-shaped body, oblong in horizontal section and much flatter on one side than on the other; deep hollow in base; widening neck, surmounted by slightly sloping roof on the top of which is a small cylindrical opening.

COLOUR : Pale blue or bluish green.

TECHNIQUE : Rough mark of separation on base; glass rather rough and full of bubbles; flatness of body accidental(?).

PRESERVATION : Perfect.

BIBL. : *Journal d'entrée du Musée*, n° 22149; MASPERO, *Stiq-catalogue*, n° 3221.

32593. **Small bottle.** — Height 0 m. 065 mill., breadth 0 m. 036 mill. — Hawara, Mr. Petrie, 1888<sup>(1)</sup> (pl. VII).

Pear-shaped body, oblong in horizontal section and with one side pressed in (accidental?); concave base; depression round foot of neck; spreading mouth.

COLOUR : Colourless.

TECHNIQUE : Fine-blown but not very even; mark of separation on base.

PRESERVATION : Two holes in body and long crack between them; dirty.

BIBL. : *Journal d'entrée du Musée*, n° 28335.

32594. **Small bottle.** — Height 0 m. 09 cent., breadth 0 m. 046 mill. — Mit Rahineh (pl. VII).

Pear-shaped body; funnel neck; projecting, doubled-over rim.

COLOUR : Pale green originally.

PRESERVATION : Rim chipped; decomposed and iridescent.

BIBL. : *Journal d'entrée du Musée*, n° 30100.

32595. **Small bottle.** — Height 0 m. 06 cent., breadth 0 m. 035 mill.

Same shape as n° 32594 except that rim is not doubled over.

COLOUR : Blue.

PRESERVATION : Most of mouth broken off; somewhat iridescent.

<sup>(1)</sup> From same tomb as n° 32520, 32525 and 32537.

32596. Small bottle. — Height 0 m. 075 mill., breadth 0 m. 038 mill. —  
Hawara. Mr. Petrie, 1887-1888 (pl. VII).

Long pear-shaped body; concave base; short neck with depression round lower end;  
large projecting rim (turned over and doubled back).

COLOUR : Has been colourless originally.

PRESERVATION : Inside incrustated and discoloured.

BIBL. : *Journal d'entrée du Musée*, n° 28337.

32597. Small bottle. — Height 0 m. 043 mill., breadth 0 m. 024 mill. (pl. VII).

Shaped like n° 32596; spreading mouth and doubled-over rim.

COLOUR : Has been colourless originally.

TECHNIQUE : Mark of separation on base.

PRESERVATION : Inside coated with brown substance.

32598. Bottle. — Height 0 m. 115 mill., breadth 0 m. 064 mill. (pl. VII).

Pear-shaped vase like n° 32594 but without any division between neck and body;  
large hollow in base; projecting rim, doubled inwards.

COLOUR : Pale green.

TECHNIQUE : Very unevenly shaped; impurities in glass.

PRESERVATION : Intact but dirty.

32599. Bottle. — Height 0 m. 058 mill., breadth 0 m. 035 mill.

Small bottle of same type as n° 32597 with thick unevenly shaped base; not well made.

COLOUR : Colourless.

PRESERVATION : Rim broken off; inside dirty.

32600. Small bottle. — Height 0 m. 04 cent., breadth 0 m. 025 mill.

Similar to n° 32597; rim is doubled in.

COLOUR : Green.

PRESERVATION : Incrustated with decomposed matter.

32601. Tiny bottle. — Height 0 m. 003 mill., breadth 0 m. 016 mill.

Similar to n° 32597 but with narrower body; rim doubled in.

COLOUR : Green.

PRESERVATION : Intact.

32602. **Small bottle.** — Height 0 m. 052 mill., breadth 0 m. 036 mill. —  
Bought, 21 May 1887.

Like n° 32597 but wider at base.

COLOUR : Colourless.

TECHNIQUE : Mark of separation on base.

PRESERVATION : Mouth broken off; inside dirty.

BIBL. : *Journal d'entrée du Musée*, n° 27801.

32603. **Small bottle.** — Height 0 m. 059 mill., breadth 0 m. 043 mill. —  
Bought, 21 May 1887.

Same type and same fabric as n° 32602; sides slightly more convex; colourless.

PRESERVATION : Mouth broken off; long vertical crack; dirty.

BIBL. : *Journal d'entrée du Musée*, n° 27802.

32604. **Small bottle.** — Height 0 m. 061 mill., breadth 0 m. 041 mill. (pl. VII).

Of same type as the preceding vases, but with rounder body and longer neck; base flat; rim doubled in.

COLOUR : Pale green.

TECHNIQUE : Full of small bubbles and impurities.

PRESERVATION : Intact.

32605. **Tiny bottle.** — Height 0 m. 026 mill., breadth 0 m. 019 mill.

Of same type as the preceding, but without any division between neck and shoulder; broadest at base; projecting rim; very deep hollow in base.

COLOUR : Pale bluish green.

TECHNIQUE : Badly made; impurities in glass.

PRESERVATION : Intact.

32606. **Small bottle.** — Height 0 m. 054 mill., breadth 0 m. 034 mill. (pl. VII).

Conical body standing on round-edged base slightly concave underneath; depression round foot of neck; spreading mouth with doubled-in rim.

COLOUR : Pale green.

TECHNIQUE : Evenly made.

PRESERVATION : Decomposed; crack on one side.

32607. **Small bottle.** — Height 0 m. 061 mill., breadth 0 m. 032 mill. — Mit Rahineh (pl. VII).

Straight-sided body, narrowing slightly towards top; flat base with rounded edges; rounded shoulder; funnel neck.

COLOUR : Dark blue.

PRESERVATION : Mouth broken off; slightly decomposed.

BIBL. : *Journal d'entrée du Musée*, n° 30102.

32608. **Tiny bottle.** — Height 0 m. 021 mill., breadth 0 m. 011 mill. — Bought (pl. VII).

Oval body; large neck with depression round lower end and spreading mouth with doubled-in rim; flat base.

COLOUR : Dark blue.

PRESERVATION : Intact.

BIBL. : *Journal d'entrée du Musée*, n° 29886.

32609. **Small bottle.** — Height 0 m. 031 mill., breadth 0 m. 03 cent. (pl. VII).

Flat rounded body with concave base; cylindrical neck with mouldings.

COLOUR : Green.

TECHNIQUE : Made of comparatively thick glass; mark of separation on base.

PRESERVATION : Slightly corroded.

32610. **Small bottle.** — Height 0 m. 068 mill., breadth 0 m. 033 mill. (pl. VII).

Globular body with slightly flattened base; long neck; doubled-down rim.

COLOUR : Green.

TECHNIQUE : Full of small air-bubbles; not very even.

PRESERVATION : Intact.

32611. **Small bottle.** — Height 0 m. 06 cent., breadth 0 m. 028 mill.

Similar to n° 32610 in every respect.

32612. **Bottle.** — Height 0 m. 127 mill., breadth 0 m. 047 mill. (pl. VII).

Small round body with flat base; long neck; flat projecting rim, doubled inwards.

COLOUR : Pale green.

TECHNIQUE : Mark of separation on base.

PRESERVATION : Slightly iridescent.

**32613. Bottle.** — Height 0 m. 1.28 mill., breadth 0 m. 0.45 mill.

Shape like n° 32612.

COLOUR : Nearly colourless originally; pale green tinge.

PRESERVATION : Neck and body broken apart : iridescent and dirty.

**32614. Bottle.** — Height 0 m. 1.2 cent., breadth 0 m. 0.44 mill. — Bought, 1885.

Similar to n° 32612.

COLOUR : Pale green originally.

PRESERVATION : Iridescent.

BIBL. : *Journal d'entrée du Musée*, n° 26865.

**32615. Bottle.** — Height 0 m. 1.65 mill., breadth 0 m. 0.7 cent.

Like n° 32612 but a little larger; base slightly concave.

COLOUR : Pale green originally.

PRESERVATION : Iridescent and dirty.

**32616. Bottle.** — Height 0 m. 1.22 mill., breadth 0 m. 0.46 mill.

Similar to the preceding.

COLOUR : Pale bluish green.

PRESERVATION : Slightly iridescent.

**32617. Bottle.** — Height 0 m. 1.33 mill., breadth 0 m. 0.47 mill. — Mit Rahineh.

Similar to the preceding.

COLOUR : Pale green originally.

PRESERVATION : Pale, slightly iridescent patina.

BIBL. : *Journal d'entrée du Musée*, n° 30099.

**32618. Bottle.** — Height 0 m. 1.3 cent., breadth 0 m. 0.48 mill.

Similar to n° 32612 in shape, colour and technique.

PRESERVATION : Somewhat iridescent and dirty.

32619. **Bottle.** — Height 0 m. 108 mill., breadth 0 m. 06 cent. (pl. VII).

Similar to the preceding but with shorter neck.

COLOUR : Pale blue or bluish green.

PRESERVATION : Somewhat iridescent.

32620. **Bottle.** — Height 0 m. 056 mill., breadth 0 m. 063 mill. (pl. VII).

Similar to the preceding but with broader base.

COLOUR : Pale blue or bluish green.

PRESERVATION : Slightly decomposed and iridescent.

32621. **Bottle.** — Height 0 m. 17 cent., breadth 0 m. 07 cent.

Similar to n° 32620, but with rather higher body encircled by a narrow impressed band; large hollow in base.

COLOUR : Pale green.

PRESERVATION : Upper part of neck broken off; dirty and slightly iridescent.

32622. **Bottle.** — Height 0 m. 158 mill., breadth 0 m. 05 cent. (pl. VII).

Like n° 32620, but with slightly concave sides; concave base.

COLOUR : Very pale green tinge.

PRESERVATION : Top of neck broken off; slight iridescence in places.

32623. **Bottle.** — Height 0 m. 10 cent., breadth 0 m. 026 mill. — Bought, 1885 (pl. VII).

Of same general type as the preceding; narrow, comparatively high body with depression round upper part; similar depression round foot of neck; base slightly concave.

COLOUR : Pale green tinge.

PRESERVATION : Half of rim broken off; more or less iridescent.

Bibl. : *Journal d'entrée du Musée*, n° 26723.

32624. **Bottle.** — Height 0 m. 146 mill., breadth 0 m. 035 mill. (pl. VII).

Of same general type as the preceding; broad, concave base; deep depression round middle of body; neck narrows slightly toward the middle.

PRESERVATION : Iridescent and dirty.

**32625. Bottle.** — Height 0 m. 171 mill., breadth 0 m. 081 mill. — Bought, 1885.

Similar to n° 32622, but the sides slope more.

COLOUR : Pale bluish tinge.

PRESERVATION : Top of neck broken off; iridescent.

BIBL. : *Journal d'entrée du Musée*, n° 26864.

**32626. Bottle.** — Height 0 m. 13 cent., breadth 0 m. 08 cent.

Broad, nearly flat base; conical body, but with a slight curve in the sides; usual long neck; spreading mouth with small, doubled-in rim.

COLOUR : Pale green originally.

PRESERVATION : Dirty and very iridescent; slightly cracked.

**32627. Bottle.** — Height 0 m. 155 mill., breadth 0 m. 09 cent.

Same type as n° 32626, but with a more pronounced curve in the sides; concave base; flat-topped, doubled-in rim.

COLOUR : Pale green tinge.

PRESERVATION : Iridescent.

**32628. Bottle.** — Height 0 m. 122 mill., breadth 0 m. 078 mill. (pl. VII).

Like n° 32627 but with flatter body; base nearly flat; mouth like that of n° 32626.

COLOUR : Almost colourless originally(?).

PRESERVATION : Dirty and coated with decomposed matter; iridescent.

**32629. Bottle.** — Height 0 m. 235 mill., breadth 0 m. 107 mill. — Bought, 21 May 1887 (pl. VII).

Broad base, slightly concave and with a deeper hollow in the middle; conical body with slightly curving sides; long neck and doubled-in rim of usual type.

COLOUR : Green.

TECHNIQUE : Mark of separation on base (?); tool-marks round foot of neck.

PRESERVATION : Intact.

BIBL. : *Journal d'entrée du Musée*, n° 27792.

**32630. Bottle.** — Height 0 m. 205 mill., breadth 0 m. 075 mill.

Similar to n° 32629; concave base.

*Catal. du Musée*, n° 32401.

COLOUR : Pale green.

TECHNIQUE : Mark of separation on base; glass full of air-bubbles.

PRESERVATION : Inside incrustated with dirt.

**32631. Bottle.** — Height 0 m. 197 mill., breadth 0 m. 085 mill. — Bought, 1887 (pl. VII).

Like the preceding but with flatter body; concave base.

COLOUR AND TECHNIQUE : Like n° 32630; marks round foot of neck.

PRESERVATION : Intact.

**32632. Bottle.** — Height 0 m. 16 cent., breadth 0 m. 095 mill. (pl. VII).

Broad, extremely flat body and concave base; long neck and spreading mouth like that of n° 32626.

COLOUR : Almost colourless originally.

PRESERVATION : Dirty; slight iridescence.

**32633. Bottle.** — Height 0 m. 07 cent., breadth 0 m. 041 mill.

Small vase of same type as n° 32632.

COLOUR : Colourless.

TECHNIQUE : Glass full of bubbles; marks round foot of neck.

PRESERVATION : Intact.

**32634. Bottle.** — Height 0 m. 165 mill., breadth 0 m. 107 mill. (pl. VII).

Conical body; rounded base with hollow in centre; comparatively thick, short neck with doubled-in rim of usual type.

COLOUR : Green.

TECHNIQUE : Mark of separation on base; marks round foot of neck.

PRESERVATION : Intact but dirty.

BIBL. : MASPERO, *Slip-catalogue*, n° 3224.

**32635. Bottle.** — Height 0 m. 17 cent., breadth 0 m. 10 cent.

Like n° 32634 but with slightly narrower and taller body.

COLOUR : Pale green than n° 32634.

PRESERVATION : Intact; slight incrustation.



32636. **Bottle.** — Height 0 m. 165 mill., breadth 0 m. 067 mill.

Conical body, slightly concave base, long neck and doubled-in rim of usual type.

PRESERVATION : Rim broken; mended break in neck; incrustated with dirt and iridescent patina.

32637. **Bottle.** — Height 0 m. 203 mill., breadth 0 m. 079 mill. — Bought, 1887 (pl. VIII).

Same type as n° 32636.

COLOUR : Bluish green.

TECHNIQUE : Mark of separation on base and marks round foot of neck.

PRESERVATION : Intact.

BIBL. : *Journal d'entrée du Musée*, n° 28044.

32638. **Bottle.** — Height 0 m. 17 cent., breadth 0 m. 053 mill.

Like n° 32637.

COLOUR : Green, very opaque.

PRESERVATION : Discoloured on one side.

32639. **Bottle.** — Height 0 m. 103 mill., breadth 0 m. 048 mill. — Bought, 21 May 1887 (pl. VIII).

Small vase of same general type as the preceding but with very flat body; base nearly flat.

COLOUR : Bluish green.

TECHNIQUE : Mark of separation on base. The glass is as thick as that of n° 32637 and is full of small air-bubbles.

PRESERVATION : Intact.

BIBL. : *Journal d'entrée du Musée*, n° 27793.

32640. **Bottle.** — Height 0 m. 23 cent., breadth 0 m. 09 cent. — Collection Huber (pl. VIII).

Tall conical body; concave base; long neck and doubled-in rim of usual type.

COLOUR : Bluish green.

TECHNIQUE : Mark of separation on base and marks round foot of neck; evenly made.

PRESERVATION : Intact.

BIBL. : MASPERO, *Guide*, 1883, p. 104, n° 3251; *Journal d'entrée du Musée*, n° 4902.

32641. **Bottle.** — Height 0 m. 155 mill., breadth 0 m. 066 mill.

Smaller vase of same shape and colour as n° 32640; flat base.

PRESERVATION : Intact.

BIBL. : MASPERO, *Slip-catalogue*, n° 3223.

32642. **Bottle.** — Height 0 m. 115 mill., breadth 0 m. 056 mill.

Similar to n° 32641 in shape and colour, but smaller and rather darker green.

PRESERVATION : Iridescent decomposition here and there.

BIBL. : MASPERO, *Slip-catalogue*, n° 3219.

32643. **Bottle.** — Height 0 m. 145 mill., breadth 0 m. 065 mill. — Saqqarah,  
August 1860 (pl. VIII).

Very like n° 32641, but a more pronounced green.

PRESERVATION : A few iridescent spots.

BIBL. : MASPERO, *Slip-catalogue*, n° 2872; *Journal d'entrée du Musée*, n° 11564.

32644. **Bottle.** — Height 0 m. 19 cent., breadth 0 m. 07 cent.

Same type and quality of glass as the preceding; base concave.

COLOUR : Green.

PRESERVATION : Dirty; slight signs of iridescence.

32645. **Bottle.** — Height 0 m. 13 cent., breadth 0 m. 052 mill.

Small vase like the preceding; concave base.

COLOUR : Green.

PRESERVATION : Partly covered with iridescent decomposition.

BIBL. : MASPERO, *Slip-catalogue*, n° 3206.

32646. **Bottle.** — Height 0 m. 137 mill., breadth 0 m. 046 mill.

Small vase like the preceding; rather tall body and narrow neck; concave base.

COLOUR : Green.

PRESERVATION : Good deal of whitish decomposition.

BIBL. : MASPERO, *Slip-catalogue*, n° 3055.

**32647. Bottle.** — Height 0 m. 155 mill., breadth 0 m. 06 cent. (pl. VIII).

Vase of same general type and same quality of glass as the preceding; the body, however, is more pear-shaped; small concave base.

COLOUR : Bluish green.

PRESERVATION : Intact.

**32648. Bottle.** — Height 0 m. 115 mill., breadth 0 m. 049 mill.

Small vase of same shape as n° 32647; impressed line round middle of body; base slightly concave.

COLOUR : Light bluish green.

PRESERVATION : Rim broken off; more or less iridescent.

**32649. Bottle.** — Height 0 m. 112 mill., breadth 0 m. 05 cent.

Small vase like n° 32640; base flat.

COLOUR : Green.

PRESERVATION : Decomposed and discoloured; rim broken.

BIBL. : MASPERO, *Slip-catalogue*, n° 2899.

**32650. Bottle.** — Height 0 m. 112 mill., breadth 0 m. 05 cent.

Small vase like n° 32640; base slightly concave.

COLOUR : Pale greenish tinge.

TECHNIQUE : Mark of separation on base and tool-marks round foot of neck.

PRESERVATION : Intact.

**32651. Bottle.** — Height 0 m. 156 mill., breadth 0 m. 05 cent. — Saqqarah, August 1860 (pl. VIII).

Like the preceding; long narrow neck; slightly concave base.

COLOUR : Green.

TECHNIQUE : Like n° 32650.

PRESERVATION : More or less decomposed and opaque.

BIBL. : MASPERO, *Slip-catalogue*, n° 2739; *Journal d'entrée du Musée*, n° 11562.

**32652. Bottle.** — Height 0 m. 15 cent., breadth 0 m. 05 cent.

Like the preceding; rather long neck; flat base; marks round foot of neck.

COLOUR : Green.

PRESERVATION : Intact.

BIBL. : MASPERO, *Slip-catalogue*, n° 3054.

32653. **Bottle.** — Height 0 m. 1 1/4 cent., breadth 0 m. 0/44 mill.

Like n° 32652; neck widens slightly towards top; hollow in base with mark of separation.

COLOUR : Green.

PRESERVATION : Partly decomposed and iridescent.

BIBL. : MASPERO, *Slip-catalogue*, n° 3236.

32654. **Bottle.** — Height 0 m. 1 2/4 mill., breadth 0 m. 0/43 mill.

Like n° 32640 ff.; small hollow in base with mark of separation.

COLOUR : Green.

PRESERVATION : Slight decomposition here and there.

BIBL. : MASPERO, *Slip-catalogue*, n° 3082.

32655. **Bottle.** — Height 0 m. 22 cent., breadth 0 m. 075 mill. (pl. VIII).

Pear-shaped body and long neck, slightly narrowing towards top, with rim of usual type. It is wrapped up from top to bottom in strips of fibre, below which can be distinguished some fragments of a Greek papyrus.

COLOUR : Pale green.

PRESERVATION : Bottle intact; wrappings in fairly good condition.

32656. **Bottle.** — Height 0 m. 185 mill., breadth 0 m. 065 mill. (pl. VIII).

Long-necked bottle like the preceding, wrapped up in strips of fibre.

COLOUR : Green.

PRESERVATION : Bottle intact; wrappings well preserved round body of vase, but those round neck partly destroyed.

32657. **Bottle.** — Height 0 m. 16 cent., breadth 0 m. 065 mill.

Bottle of same type as the preceding, with long narrow neck, wrapped up in strips of fibre.

COLOUR : Green.

PRESERVATION : Bottle intact; wrappings decayed and those round neck partly destroyed.

32658. **Bottle.** — Height o m. 145 mill., breadth o m. 65 cent.

Like n° 32657 and enveloped in similar wrappings.

COLOUR : Green, rather pale.

PRESERVATION : Bottle intact; wrappings rather loose.

32659. **Bottle.** — Height o m. 15 cent., breadth o m. 65 cent.

Long-necked bottle of same type as the preceding with remains of wrappings round body. The inner wrappings are seen to consist of narrow threads of fibre diverging from a knot below the base of the vase.

COLOUR : Nearly colourless, but filled with elongated bubbles.

PRESERVATION : Bottle intact.

32660. **Bottle.** — Height o m. 133 mill., breadth o m. 655 mill.

Long-necked bottle like n° 32640 ff.; remains of wrappings round body and neck.

COLOUR : Green.

PRESERVATION : Bottle intact; wrappings much decayed.

32661. **Bottle.** — Height o m. 125 mill., breadth o m. 655 mill. — Fayoum (pl. VIII).

Small, long-necked bottle with very large rim, enveloped in wrappings and furnished with a grass stopper. On one of the outer fibres is an inscription, written in capital letters (indistinct) : — ΑΦΟΑΕΑΤΟΥ (?).

PRESERVATION : Bottle intact and wrappings in good condition except that there is a good deal of loose fibre below rim.

BIBL. : *Journal d'entrée du Musée*, n° 30296.

32662. **Bottle.** — Height o m. 112 mill., breadth o m. 654 mill. — Bought, 1887.

Small bottle of same type as n° 32661 and similarly wrapped up; broad rim, doubled-in in the usual way.

PRESERVATION : Bottle intact; wrappings decayed and worn.

BIBL. : *Journal d'entrée du Musée*, n° 28041.

32663. **Small bottle.** — Height o m. 67 cent., breadth o m. 64 cent. — Labyrinth, October 1862 (pl. VIII).

Same type as n° 32640 ff.; comparatively broad rim; flat base.

COLOUR : Green.

TECHNIQUE : Mark of separation on base; conspicuous lines round foot of neck.

PRESERVATION : Intact.

BIBL. : MASPERO, *Slip-catalogue*, n° 2878; *Journal d'entrée du Musée*, n° 19961.

**32664. Small bottle.** — Height 0 m. 07 cent., breadth 0 m. 048 mill. —  
Labyrinth, October 1862.

Similar to n° 32663; thick neck, narrowing slightly towards top; low body and concave base with mark of separation.

COLOUR : Green.

PRESERVATION : Discoloured with decomposition; small chip on one side.

BIBL. : MASPERO, *Slip-catalogue*, n° 4774; *Journal d'entrée du Musée*, n° 19957.

**32665. Small bottle.** — Height 0 m. 068 mill., breadth 0 m. 048 mill. —  
Bought, 21 May 1887 (pl. VIII).

Small vase like n° 32663 but with thicker neck; concave base with mark of separation.

COLOUR : Green.

PRESERVATION : Intact.

BIBL. : *Journal d'entrée du Musée*, n° 27794.

**32666. Small bottle.** — Height 0 m. 083 mill., breadth 0 m. 05 cent. (pl. VIII).

Like n° 32665 but with longer neck and rounded body; rim slopes downwards; base slightly concave.

COLOUR : Green.

TECHNIQUE : Mark of separation on base; marks round foot of neck; rim doubled-in in the usual way.

PRESERVATION : Rim chipped.

BIBL. : *Journal d'entrée du Musée*, n° 32952.

**32667. Bottle.** — Height 0 m. 151 mill., breadth 0 m. 039 mill. (pl. VIII).

Narrow conical body, long cylindrical neck, and flat rim of usual type; impressed line round junction of neck and body; base nearly flat.

COLOUR : Green.

TECHNIQUE : Mark of separation on base.

PRESERVATION : Intact.

BIBL. : MASPERO, *Slip-catalogue*, n° 3222.

32668. **Bottle.** — Height 0 m. 155 mill., breadth 0 m. 038 mill.

Similar to n° 32667 in shape, colour and technique; marks round lower end of neck.

PRESERVATION : Iridescent spots here and there.

BIBL. : MASPERO, *Slip-catalogue*, n° 3333.

32669. **Bottle.** — Height 0 m. 152 mill., breadth 0 m. 039 mill.

Similar to n° 32668 in every respect.

PRESERVATION : Decomposed and discoloured.

BIBL. : MASPERO, *Slip-catalogue*, n° 3083.

32670. **Bottle.** — Height 0 m. 164 mill., breadth 0 m. 035 mill.

Like the preceding, but rather longer and narrower.

PRESERVATION : Decomposed and iridescent.

BIBL. : MASPERO, *Slip-catalogue*, n° 3290.

32671. **Bottle.** — Height 0 m. 172 mill., breadth 0 m. 041 mill.

Similar to n° 32668 in every respect.

PRESERVATION : Slightly chipped; decomposed and discoloured.

32672. **Bottle.** — Height 0 m. 176 mill., breadth 0 m. 038 mill. — Saqqarah, August 1860.

Similar to the preceding; rim has a slight downward slope.

PRESERVATION : Iridescent all over.

BIBL. : MASPERO, *Slip-catalogue*, n° 3334; *Journal d'entrée du Musée*, n° 11561.

32673. **Bottle.** — Height 0 m. 133 mill., breadth 0 m. 04 cent.

Same type as the preceding; shorter neck; lower part of body slightly more rounded.

COLOUR : Green.

TECHNIQUE : Mark of separation on base; lines round foot of neck.

PRESERVATION : Intact.

BIBL. : MASPERO, *Slip-catalogue*, n° 2740.

*Catal. du Musée*, n° 32401.

32674. **Bottle.** — Height 0 m. 121 mill., breadth 0 m. 035 mill.

Like n° 32673; mark on base.

PRESERVATION : Partly decomposed.

BIBL. : MASPERO, *Slip-catalogue*, n° 2876.

32675. **Bottle.** — Height 0 m. 146 mill., breadth 0 m. 037 mill. — Labyrinth, October 1862.

Like n° 32673 but with longer neck; slightly concave base with mark of separation; usual green glass, rather impure.

PRESERVATION : Intact.

BIBL. : MASPERO, *Slip-catalogue*, n° 2873; *Journal d'entrée du Musée*, n° 19971.

32676. **Bottle.** — Height 0 m. 122 mill., breadth 0 m. 035 mill. — Bought, 1887 (pl. VIII).

Like n° 32673, but lower end is still more rounded; usual green glass; mark of separation on base.

PRESERVATION : Intact.

BIBL. : *Journal d'entrée du Musée*, n° 28042.

32677. **Bottle.** — Height 0 m. 098 mill., breadth 0 m. 038 mill. — Labyrinth, October 1862 (pl. VIII).

Small vase with long neck which swells out at lower end into a small body; no line of demarcation between neck and body; concave base; large flat rim with edge doubled in.

COLOUR : Same green glass as the preceding vases.

TECHNIQUE : Mark of separation on base.

PRESERVATION : Intact.

BIBL. : MASPERO, *Slip-catalogue*, n° 2877; *Journal d'entrée du Musée*, n° 19964.

32678. **Bottle.** — Height 0 m. 088 mill., breadth 0 m. 038 mill.

Similar to n° 32677; nearly flat base with mark of separation.

PRESERVATION : Entirely discoloured with decomposition; rim chipped.

32679. **Bottle.** — Height 0 m. 086 mill., breadth 0 m. 034 mill.

Similar to n° 32677; rim slopes downwards; flat base with mark of separation.

COLOUR : Pale green.

PRESERVATION : Intact.



**32680. Bottle.** — Height 0 m. 066 mill., breadth 0 m. 031 mill. (pl. VIII).

Small vase of same shape and colour as n° 32677; flat base with mark of separation.

PRESERVATION : Intact.

BIBL. : MASPERO, *Guide*, 1883, p. 104, n° 3265.

**32681. Bottle.** — Height 0 m. 082 mill., breadth 0 m. 033 mill.

Similar to n° 32677; flat base with mark of separation; rather unevenly made.

PRESERVATION : Entirely discoloured by decomposition.

**32682. Small bottle.** — Height 0 m. 077 mill., breadth 0 m. 022 mill. —  
Bought, 1885 (pl. VIII).

Pear-shaped body and flattened base; cylindrical neck with projecting, doubled-in rim; depression between neck and body.

COLOUR : Originally colourless.

TECHNIQUE : Thin-blown glass with mark of separation on base.

PRESERVATION : Iridescent.

BIBL. : *Journal d'entrée du Musée*, n° 26866.

**32683. Small bottle.** — Height 0 m. 043 mill., breadth 0 m. 02 cent. —  
Mit Rahineh.

Same shape as n° 32682.

COLOUR : Pale green originally.

PRESERVATION : Upper part of neck broken off; decomposed and iridescent.

BIBL. : *Journal d'entrée du Musée*, n° 30101.

**32684. Small bottle.** — Height 0 m. 11 cent., breadth 0 m. 027 mill.

Same shape as n° 32682; base slightly concave.

COLOUR : Pale green tinge originally.

PRESERVATION : Iridescent and dirty.

**32685. Small bottle.** — Height 0 m. 132 mill., breadth 0 m. 025 mill.

Long narrow vase like n° 32684.

COLOUR : Pale green originally.

PRESERVATION : Iridescent.

32686. **Small bottle.** — Height 0 m. 117 mill., breadth 0 m. 021 mill. (pl. VIII).

Like n° 32684 but longer and narrower.

COLOUR : Pale green tinge originally.

PRESERVATION : Iridescent.

32687. **Small bottle.** — Height 0 m. 111 mill., breadth 0 m. 027 mill.

Similar to the preceding, but with division between neck and body very high up.

COLOUR : Very pale green tinge originally.

PRESERVATION : Discoloured and iridescent.

32688. **Small bottle.** — Height 0 m. 095 mill., breadth 0 m. 027 mill. (pl. VIII).

Same shape as n° 32682; slight depression round middle of body.

COLOUR : Pale green tinge originally.

PRESERVATION : Discoloured and iridescent.

32689. **Small bottle.** — Height 0 m. 11 cent., breadth 0 m. 034 mill.

Like n° 32688; rather conspicuous lines round middle of body and foot of neck.

COLOUR : Pale bluish green tinge originally.

PRESERVATION : Discoloured and iridescent.

32690. **Small bottle.** — Height 0 m. 113 mill., breadth 0 m. 012 mill. (pl. VIII).

Long tubular bottle with slight swelling at lower end, narrowest in the middle; doubled-in rim.

COLOUR : Pale green tinge originally (?).

PRESERVATION : Covered with iridescent patina.

32691. **Long bottle.** — Height 0 m. 315 mill., breadth 0 m. 033 mill. (pl. VIII).

Long tube with swelling in the middle and globular end.

COLOUR : Almost colourless.

PRESERVATION : Upper end broken off short; dirty and slightly iridescent.

32692. **Fragment of a bottle like n° 32691.** — Height 0 m. 08 cent., breadth 0 m. 033 mill.

Only the globular end is preserved; iridescent.

32693. Long bottle. — Height 0 m. 372 mill., breadth 0 m. 047 mill. — Bought, 3 December 1884 (pl. VIII).

Long tubular bottle with thick swelling in the middle; doubled-in rim.

COLOUR : Originally colourless (?).

PRESERVATION : Incrusted and iridescent.

BIBL. : *Journal d'entrée du Musée*, n° 26403.

32694. Small bottle. — Height 0 m. 166 mill., breadth 0 m. 026 mill. — Bought, 1885.

Same type as n° 32693, with oval swelling in the middle; very narrow.

PRESERVATION : Discoloured and iridescent; both ends broken off short.

BIBL. : *Journal d'entrée du Musée*, n° 26740.

32695. Vase. — Height 0 m. 208 mill., breadth 0 m. 024 mill. (pl. VIII).

Long tubular vase widening slightly towards upper end; small hole in lower end.

COLOUR : Bluish green.

TECHNIQUE : Broken off at lower end so as to leave a small hole (apparently intentional).

PRESERVATION : Intact but dirty.

32696. Vase. — Height 0 m. 206 mill., breadth 0 m. 024 mill.

Same as n° 32695 in every respect.

32697. Bottle. — Height 0 m. 075 mill., breadth 0 m. 065 mill. (pl. VIII).

Conical body with slight curve in the sides; wide cylindrical neck and spreading mouth; slightly concave base.

COLOUR : Green tinge where the glass is thicker.

TECHNIQUE : Mark of separation on base; marks round neck.

PRESERVATION : Intact.

BIBL. : MASPERO, *Guide*, 1883, p. 104, n° 3252.

32698. Small bottle. — Height 0 m. 039 mill., breadth 0 m. 045 mill. — Labyrinth, October 1862 (pl. IX).

Wide base with deep hollow in the middle; conical body with slight curve in the sides; cylindrical neck and spreading mouth.

COLOUR : Colourless.

TECHNIQUE : Mark of separation on base.

PRESERVATION : Cracked all over.

BIBL. : MASPERO, *Guide*, 1883, p. 112, n° 3148; *Journal d'entrée du Musée*, n° 19944.

- 32699.** Small bottle. — Height 0 m. 038 mill., breadth 0 m. 04 cent. —  
Hawara, Petrie, 1887-1888 (pl. IX).

Conical body; neck shaped like a reversed cone; base nearly flat.

COLOUR : Colourless; slight green tinge on rim.

TECHNIQUE : Mark of separation on base.

PRESERVATION : Dirty.

BIBL. : *Journal d'entrée du Musée*, n° 28336.

- 32700.** Bottle. — Height 0 m. 129 mill., breadth 0 m. 084 mill. (pl. IX).

The body has a rather sharp-curved shoulder and widens out slightly towards base; base nearly flat; fairly long neck with depression round lower end; spreading mouth and small rounded rim.

COLOUR : Pale green tinge.

TECHNIQUE : Fine-blown and evenly made.

PRESERVATION : Incrusted a good deal and more or less iridescent.

- 32701.** Bottle. — Height 0 m. 20 cent., breadth 0 m. 068 mill. (pl. IX).

Oval body standing on small spreading foot; long neck spreading out at top; thick doubled-over rim; ring round foot of neck.

COLOUR : Transparent glass with green tinge in the thicker parts.

TECHNIQUE : Fine-blown and evenly shaped; collar attached separately; mark of separation on base.

PRESERVATION : Slightly iridescent and rather dirty.

- 32702.** Bottle. — Height 0 m. 103 mill., breadth 0 m. 044 mill. (pl. IX).

Straight sides, rather broader at shoulder than at base; base and shoulder rounded off; narrow neck with depression round lower end and bulge in the middle; spreading mouth, on the underside of which is a ring in relief; sets of fine incised lines at intervals round body.

COLOUR : Colourless; ring, which has been attached separately, is blue.

TECHNIQUE : Evenly shaped : mark of separation on base.

PRESERVATION : Slightly decomposed; inside dirty.

BIBL. : MASPERO, *Guide*, 1883, p. 141, n° 3254.

**32703. Bottle.** — Height 0 m. 112 mill., breadth 0 m. 046 mill.

Similar to n° 32702 except that the sides curve in more gradually towards base.

PRESERVATION : In same condition as n° 32702.

BIBL. : MASPERO, *Slip-catalogue*, n° 3211.

**32704. Bottle.** — Height 0 m. 12 cent., breadth 0 m. 048 mill. (pl. IX).

The sides narrow in from shoulder downwards and end in a round-pointed base; short neck with depression round lower end; spreading mouth and doubled-in rim.

COLOUR : Originally colourless or with pale green tinge.

PRESERVATION : Iridescent all over.

**32705. Bottle.** — Height 0 m. 113 mill., breadth 0 m. 045 mill. — Fayoum (pl. IX).

Straight sides, widening slightly from base to shoulder; flat base; sharp-curved shoulder; long neck, spreading mouth and doubled-in rim. The sides are fluted vertically from shoulder to base.

COLOUR : Pale green.

TECHNIQUE : Not quite evenly shaped; good many bubbles and impurities in glass.

PRESERVATION : Intact.

BIBL. : *Journal d'entrée du Musée*, n° 29821; labelled n° 6807.

**32706. Bottle.** — Height 0 m. 104 mill., breadth 0 m. 045 mill. — Fayoum.

Similar to n° 32705; large unevenly made rim.

PRESERVATION : Inside dirty.

BIBL. : *Journal d'entrée du Musée*, n° 29822; labelled n° 6808.

**32707. Bottle.** — Height 0 m. 114 mill., breadth 0 m. 045 mill. — Fayoum.

Similar to n° 32705 but with broader mouth and more sloping shoulder.

PRESERVATION : Inside rather dirty.

BIBL. : *Journal d'entrée du Musée*, n° 29820; labelled n° 6806.

- 32708. Bottle.** — Height 0 m. 085 mill., breadth 0 m. 055 mill. — Bought (pl. IX).

Straight-sided body, slightly broader at shoulder than at base; base slightly concave; depression round top of shoulder; short wide neck and spreading mouth.

COLOUR : Pale green.

TECHNIQUE : Mark of separation on base; not very evenly shaped.

PRESERVATION : Somewhat decomposed and iridescent.

BIBL. : *Journal d'entrée du Musée*, n° 30044.

- 32709. Bottle.** — Height 0 m. 085 mill., breadth 0 m. 065 mill. — Collection Huber (pl. IX).

Thick, straight-sided body, rather broader at shoulder than at base; flat base; cylindrical neck, about half as high and half as wide as body.

COLOUR : Pale green tinge.

TECHNIQUE : Mark of separation on base.

PRESERVATION : Two cracks in neck.

BIBL. : MASPERO, *Slip-catalogue*, n° 3217; *Journal d'entrée du Musée*, n° 4904.

- 32710. Bottle.** — Height 0 m. 075 mill., breadth 0 m. 05¼ mill. — Bought (pl. IX).

Same shape as n° 32709 with vertical ribs at about 0 m. 015 mill. from each other; two concentric circles in relief on base.

COLOUR : Pale green tinge.

TECHNIQUE : The decoration looks as if moulded.

PRESERVATION : Much decomposed; slight crack in neck.

BIBL. : *Journal d'entrée du Musée*, n° 30045.

- 32711. Bottle.** — Height 0 m. 042 mill., breadth 0 m. 031 mill.

Small vase of same shape as n° 32709.

COLOUR : Originally colourless (?).

TECHNIQUE : Mark of separation on base.

PRESERVATION : Decomposed and iridescent.

- 32712. Bottle.** — Height 0 m. 115 mill., breadth 0 m. 028 mill. — Hawara, Mr. Petrie, 1887-1888 (pl. IX)<sup>(1)</sup>.

Small narrow vase with tapering body, which becomes rectangular in section at lower end; fairly long neck, widening out towards top and with swelling round lower half. Roughly broken off below. Wax stopper on mouth (ancient).

COLOUR : Blue.

PRESERVATION : Intact.

BIBL. : *Journal d'entrée du Musée*, n° 28351.

- 32713. Small bottle.** — Height 0 m. 086 mill., breadth 0 m. 028 mill. — Hawara, Mr. Petrie, 1887-1888 (pl. IX).

Narrow vase with slightly concave sides, long sloping shoulder and cylindrical neck with spreading mouth and doubled-in rim; base nearly flat; depression round foot of neck.

COLOUR : Colourless.

PRESERVATION : Remains of dark substance inside; neck stopped up with cloth (ancient).

BIBL. : *Journal d'entrée du Musée*, n° 28338.

- 32714. Small bottle.** — Height 0 m. 066 mill., breadth of mouth 0 m. 026 mill. — Bought, September 1891 (pl. IX).

Narrow body with five vertical hollows, pressed deeply in; long neck with spreading mouth and small rim; flaw in neck.

COLOUR : Yellowish green originally (?).

PRESERVATION : Iridescent and dirty inside.

BIBL. : *Journal d'entrée du Musée*, n° 29425.

- 32715. Small bottle.** — Height 0 m. 098 mill., breadth 0 m. 02 cent. — Bought, 3 December 1884 (pl. IX).

Long narrow vase with pressed-in sides like n° 32714; short neck with ring attached round lower end; doubled-over rim.

COLOUR : Pale green.

TECHNIQUE : Mark of separation at lower end; carelessly finished off.

PRESERVATION : Slightly cracked on one side.

BIBL. : *Journal d'entrée du Musée*, n° 26404.

<sup>(1)</sup> «La bouteille a été trouvée dans une gargonnette» (*Journal*).

*Catal. du Musée*, n° 32401.

32716. Small bottle. — Height 0 m. 08 cent., breadth 0 m. 022 mill. — Bought (pl. IX).

Consists of a narrow cylindrical body and a neck which widens out towards top.

COLOUR : Originally colourless.

PRESERVATION : Iridescent.


BIBL. : *Journal d'entrée du Musée*, n° 29883.

32717. Small bottle. — Height 0 m. 043 mill., breadth 0 m. 015 mill.

Tiny colourless vase of same shape as n° 32716.

PRESERVATION : Intact.

32718. Small bottle. — Height 0 m. 053 mill., breadth 0 m. 017 mill. — Bought (pl. IX).

Same shape as n° 32716, with patterns cut on the surface. The design on the body is as sketched, while the neck is ornamented with four flattened spaces of this shape .



COLOUR : Pale green tinge.

TECHNIQUE : Patterns made by filing; base also filed flat.

PRESERVATION : Intact; inside coated with dark substance.

BIBL. : *Journal d'entrée du Musée*, n° 29887.

32719. Small bottle. — Height 0 m. 05 cent., breadth 0 m. 016 mill. (pl. IX).

Similar to n° 32718 and with same treatment of neck; pattern on body as sketched; horizontal band just above base.



COLOUR : Pale green tinge.

TECHNIQUE : Like n° 32718; rim and base also filed flat.

PRESERVATION : Intact.

32720. Small bottle. — Height 0 m. 036 mill., breadth 0 m. 022 mill. (pl. IX).

Rectangular body, slightly wider at shoulder than at base; neck shaped like thick round ring.

COLOUR : Dull and opaque, but more transparent originally.

TECHNIQUE : Mark of separation on base.

PRESERVATION : Top of neck broken off; worn a good deal.



**32721. Small bottle.** — Height 0 m. 043 mill., breadth 0 m. 025 mill. (pl. IX).

For shape see illustration; the body is flattened vertically but the neck is round in section; wide projecting rim with doubled-in edge.

COLOUR : Pale bluish green.

TECHNIQUE : Mark of separation at lower end and marks of flattening on the sides.

PRESERVATION : Intact.

**32722. Small bottle.** — Height 0 m. 041 mill., breadth 0 m. 02 cent. (pl. IX).

Similar to n° 32721 but rather narrower and with smaller rim.

COLOUR : Pale green tinge.

TECHNIQUE : Like n° 32721.

PRESERVATION : Slight iridescence.

**32723. Small bottle.** — Height 0 m. 05 cent., breadth 0 m. 031 mill.

Similar to n° 32721 in every respect.

PRESERVATION : Rim broken.

**32724. Small bottle.** — Height 0 m. 04 cent., breadth 0 m. 022 mill.

Similar to the preceding.

PRESERVATION : Rim broken off.

**32725. Small bottle.** — Height 0 m. 046 mill., breadth 0 m. 022 mill.

Similar to the preceding; rather long neck.

PRESERVATION : Rim broken off.

**32726. Small vase.** — Height 0 m. 036 mill., breadth of rim 0 m. 017 mill. (pl. IX).

Merely a small tube widening slightly towards top; turned-over rim with doubled-in edge.

COLOUR : Pale green tinge.

PRESERVATION : Decomposed a good deal.

**32727. Vase.** — Height 0 m. 135 mill., breadth 0 m. 067 mill. (including handles) (pl. IX).

For shape see illustration; round mouth without any moulding; small vertical handle

on each side of shoulder, consisting of a strip of glass with a loop at the top; a narrow thread of glass is coiled several times round shoulder, and there is a thick coil round lower end.

COLOUR : Pale green where the glass is thicker.

TECHNIQUE : Glass full of small bubbles; mark of separation on base; handles and coils of course added separately (the handles after the upper coil).

PRESERVATION : Intact.

**32728. Vase.** — Height 0 m. 125 mill., breadth 0 m. 075 mill. (including handles) (pl. IX).

Similar to n° 32727 but shorter; the handles, which are very much twisted, are attached close under mouth; thin coil round shoulder; ends below in a sort of knob, without any coil as on n° 32727.

COLOUR AND TECHNIQUE : Like n° 32727.

PRESERVATION : Rather dirty inside; slight crack on shoulder.

**32729. Vase.** — Height 0 m. 142 mill., breadth 0 m. 13 cent. (including handles) (pl. IX).

For shape see illustration. The body is elliptical in section, the handles being attached on the narrow sides; concave base; funnel neck with lower end drawn in; vertical, twisted handles with pointed upper ends turned to left. Indistinct marks on surface, perhaps intended for a pattern.

COLOUR : Pale green originally.

TECHNIQUE : Thick, opaque glass; mark of separation on base; handles added separately.

PRESERVATION : Put together out of several pieces; rather badly decomposed.

**32730. Vase.** — Height 0 m. 078 mill., breadth 0 m. 075 mill. — Balansourah, 1893 (pl. IX).

For shape see illustration. The base is flattened; wide, round-edged rim, slightly concave on top; thick handles with small round openings, in one of which there remains a suspension-ring of bronze (narrow strip with sharp-pointed ends twisted together).

ORNAMENTATION : Decorated with cut designs; round the shoulder is a row of ellipses and below between each pair a horizontal stroke; slanting lines, close together, round body of vase between two horizontal bands.

COLOUR : Colourless (but not at all transparent in its present condition).

TECHNIQUE : Made of very thick glass; marks of filing on ornamentation; handles added separately.

PRESERVATION : Glued together out of three pieces, a fragment from lower portion being still missing; dirty.

BIBL. : *Journal d'entrée du Musée*, n° 36570.

- 32731. Ornamental vase.** — Glass, bronze and gold. — Height 0 m. 13¼ mill.  
— Bought (from Fayoum according to label) (pl. IX).

The kernel of the vase consists of a narrow bottle of colourless glass; it has a rather large neck and sloping shoulder and tapers slightly towards lower end; the interior is divided into two vertical halves by a partition of the same sort of glass. It stands on three rather broad, outward-curving feet of dark blue glass with rounded tips, each pair of which is connected by a sort of volute in relief; the projecting parts of the feet are sheathed in thin sheets of metal, gold in front and lead (?) on the back. The body of the vase is encircled by four fairly thick rings of dark blue glass with a zigzag pattern between each pair; the lowest zigzag consists of a strip of light blue glass, the middle one is dark red and the upper one is dark blue. The topmost of these bands is surmounted by four small, vertically attached rings consisting of strips of dark red glass doubled into the requisite form; from each of these hangs a bronze ring about 0 m. 02 cent. in diameter and rectangular in section. Neck and top of shoulder are encircled by a rather thin coil of pale blue glass, and the rim is of the same material. Four vertical strips of dark blue glass descend from rim to shoulder, attached so as to form two vertical loops; from the upper loops hang four bronze rings like those just described, while four gold rings of similar shape but of smaller diameter (about 0 m. 01¼ mill.) are pendant from the lower loops. Each of the four vertical strips is surmounted by an irregular projection of dark red glass. Two of the gold rings are kept from hanging quite loose by a spur of blue glass which descends from the vertical loop to the red ring below.

TECHNIQUE : The bottle has been blown in the ordinary way and the ornamentation added separately, the rim and tripod base being naturally soldered on more closely than the other parts. The metal rings have of course been hung on while the glass loops were being attached; the gold ones seem to have been cut out of a sheet and hammered into shape, leaving a conspicuous suture between the two ends; the bronze ones on the other hand, which have incised lines round the outside and which are not quite even or uniform, may have been cut from a cylinder.

PRESERVATION : One of projections round rim broken off.

BIBL. : *Notice*, 1892-1897, n° 326; *Guide*, 1902, p. 266; *Guide*, 1903, p. 352; *Journal d'entrée du Musée*, n° 31192.

- 32732. Vase.** — Height 0 m. 085 mill., breadth 0 m. 05 cent. — Bought, January 1887 (pl. IX).

Fantastically shaped vase standing on three short, outward-curving legs; sharp curve

in middle of body, the upper portion being concave in profile; oval top with narrow ring round middle and small hole above; two vertical handles of thick twisted glass (the loops are broken).

COLOUR : Pale green tinge originally.

TECHNIQUE : Mark of separation on base; handles and ring added separately.

PRESERVATION : Handles broken; iridescent.

BIBL. : *Journal d'entrée du Musée*, n° 27506.

**32733. Amphora.** — Height 0 m. 117 mill., breadth 0 m. 058 mill. (pl. IX).

Straight-sided body, narrowing from base to shoulder; shoulder and base rounded off; narrow neck, widening towards top, and projecting rim; flat, gently curved handles, reaching from upper part of neck to shoulder; slanting strokes on upper side of rim.

COLOUR : Light blue.

TECHNIQUE : Thick glass; surface inside seems to be rather rough; perhaps made on a core.

PRESERVATION : Small hole on edge of base and several cracks on body; surface scratched.

BIBL. : MASPERO, *Guide*, 1883, p. 141, n° 3253.

**32734. Ladle.** — Height 0 m. 051 mill., length 0 m. 14 cent. — Kom Belal, N. E. of Nagada (Petrie) (pl. IX).

Rather deep bowl with rounded base, widening towards top; rim turned over vertically; long, tubular handle, rather thick at inner end and open at both ends; it is attached to bowl below rim and is quite horizontal.

COLOUR : Pale green.

TECHNIQUE : Mark of separation on base; handle added separately.

PRESERVATION : Large hole on one side and two cracks close by; somewhat decomposed.

BIBL. : *Journal d'entrée du Musée*, n° 31197 (pour faire des ventouses?).

**32735. Cup.** — Height 0 m. 07 cent., breadth 0 m. 061 mill. (pl. IX).

Bell-shaped cup with small hollow in base and rounded rim.

COLOUR : Almost colourless; pale green tinge about base.

TECHNIQUE : Full of small bubbles; mark of separation on base.

PRESERVATION : Intact but dirty.

**32736. Small cup.** — Height 0 m. 023 mill., breadth 0 m. 037 mill. — Bought (pl. IX).

Straight, vertically ribbed sides, widening towards top; flat base.

COLOUR : Colourless.

TECHNIQUE : Mark on base; several of the ribs are twisted to one side at the top.

PRESERVATION : Decomposed and iridescent.

BIBL. : *Journal d'entrée du Musée*, n° 29888.

**32737. Tiny cup.** — Height 0 m. 012 mill., breadth 0 m. 018 mill.

Rudely made little cup of colourless glass with rough-cut rim.

PRESERVATION : Somewhat iridescent.

**32738. Saucer or lid.** — Height 0 m. 015 mill., breadth 0 m. 06 cent. — Bought, 1885 (pl. IX).

Low sides, slightly concave in profile; swelling on inside.

TECHNIQUE : Mark of separation on inside; the sides have been doubled over, leaving a nicely rounded rim.

PRESERVATION : Decomposed and iridescent.

BIBL. : *Journal d'entrée du Musée*, n° 26729.

**32739. Vase.** — Height 0 m. 023 mill., breadth 0 m. 079 mill. — Collection Huber (pl. IX).

Unevenly shaped saucer with a ring of stamped ellipses round the outside; base slightly concave. Short broken stump in the middle of base, not clear whether top of a stem which has been broken off or very rough mark of separation.

COLOUR : Pale green tinge.

TECHNIQUE : Rather rough work; the ellipses seem to have been made with the same stamp.

PRESERVATION : Two cracks on opposite sides.

BIBL. : MASPERO, *Slip-catalogue*, n° 3232; *Journal d'entrée du Musée*, n° 4906 or 4907<sup>(1)</sup>.

**32740. Fragment of glass.** — Height 0 m. 06 cent., breadth 0 m. 07 cent. — Hawara, Mr. Petrie, 1887-1888 (pl. X).

The fragment is straight in vertical section and convex in horizontal section. It is ornamented with a cut design. In the middle is a female head in profile to right, with a roll of hair round forehead and a lock hanging down on neck. The head is surrounded by a circular pattern filled in with cross lines. Above to right is

<sup>(1)</sup> Two vases of this type are entered in the *Journal*, but only one seems to be now in existence.

part of a small hollowed-out ellipse, and two vertical lines run down the right side.

COLOUR : Colourless.

TECHNIQUE : Good glass without a flaw. The head is slightly modelled by filing, while the hair, eye and profile are rendered by incised lines; the other parts of the design consist of fairly thick, filed lines.

PRESERVATION : In good condition so far as preserved.

BIBL. : *Notice*, 1892-1897, n° 330; *Guide*, 1902, p. 266; *Guide*, 1903, p. 352; *Journal d'entrée du Musée*, n° 28341.

**32741. Fragment of glass with parti-coloured ornamentation.** — 0 m. 037 mill. × 0 m. 076 mill. — Hawara, Mr. Petric, 1887-1888 (pl. X).

The outside of the fragment is slightly convex and the ground is almost colourless. The central point of the ornamentation is a round patch of green with a spiral vein of brown; round about are narrow, festooned lines of white.

TECHNIQUE : The coloured ornamentation is of glass; it stands out in low relief and does not penetrate below the surface.

PRESERVATION : Slightly iridescent in places.

BIBL. : *Journal d'entrée du Musée*, n° 28343.

**32742. Neck of a bottle.** — Height 0 m. 105 mill., breadth 0 m. 039 mill. (pl. X).

Cylindrical neck widening slightly towards top; round the middle is a wavy strip of glass and above this is a narrow coil running several times round (both added separately).

COLOUR : Pale bluish green tinge.

PRESERVATION : Broken off sharp at foot of neck; dirty.

**32743. Fragment of vase.** — Height 0 m. 09 cent., breadth 0 m. 048 mill. — Aschmoucin, Kom Kousoum, 1898 (pl. X).

For shape see illustration. The curving neck is divided vertically by a thin partition; at the end of this partition the glass has been drawn inwards a little on each side; clean cut round the broad end.

COLOUR : Green.

PRESERVATION : Broken at narrow end; the broad end seems to have been cut intentionally.

BIBL. : *Journal d'entrée du Musée*, n° 32948.

**32744.** Stem of glass. — Length 0 m. 157 mill., breadth 0 m. 107 mill.

Slightly tapering stem of solid glass, round in section, with knob at broad end; ornamented with a spiral moulding.

COLOUR : Pale green tinge.

PRESERVATION : Narrow end broken off.

**32745.** Vase. — Height 0 m. 116 mill., breadth 0 m. 055 mill.

Of same general type as n° 32479; upper end sliced clean off; sets of narrow incised lines round body.

COLOUR : Green tinge.

PRESERVATION : Intact.

**32746.** Vase. — Height 0 m. 21 cent., breadth 0 m. 023 mill.

Replica of n° 32695.

PRESERVATION : Inside incrusted.

**32747.** Large bowl. — Height 0 m. 15 cent., length 0 m. 335 mill., breadth across top in the middle 0 m. 10 cent. — Bought (pl. X).

In the form of a basket with two opposite sides bent inwards; slightly convex base; deep rim doubled over on the inside.

COLOUR : Pale greenish tinge, but almost colourless.

TECHNIQUE : Mark of separation on base; air-bubbles in glass.

PRESERVATION : Badly cracked.

BIBL. : *Journal d'entrée du Musée*, n° 27812.

**32748.** Large vase (a) with lid (b). — Height without lid 0 m. 19 cent., breadth 0 m. 19 cent.; height of lid 0 m. 06 cent., breadth of lid 0 m. 135 mill. — Bought, 4 November 1885 (pl. X).

(a). Oval body with fairly broad, concave base; wide, more or less horizontal rim doubled inwards below, with raised ring round inner end of underside.

COLOUR : Pale bluish green.

TECHNIQUE : Fine-blown and evenly shaped.

PRESERVATION : Broken quite recently and put together out of a great many fragments; incomplete on one side; decomposed and iridescent.

*Catal. du Musée*, n° 32401.

(b). For shape see illustration; it has a slightly convex cap with a small hole in the middle; the edge of the rim is turned down.

COLOUR : Pale green.

PRESERVATION : Decomposed and iridescent.

BIBL. : *Journal d'entrée du Musée*, n° 27010.

**32749. Elliptical bowl.** — Height 0 m. 05 cent., length 0 m. 186 mill., breadth 0 m. 098 mill. — Hou, 1903.

Same type as n° 32408; stands on circular, spreading foot; doubled-over rim, very broad at each end.

COLOUR : Green.

PRESERVATION : Slightly decomposed at one end.

BIBL. : *Journal d'entrée du Musée*, n° 36406.

**32750. Small vase.** — Height 0 m. 043 mill., breadth 0 m. 041 mill. — Fag el Gamus, 1902 (Grenfell and Hunt) (pl. X).

Similar in shape to n° 32518; wide, spreading mouth with rim doubled inwards; slight hollow in base.

COLOUR : Blue.

PRESERVATION : Intact.

BIBL. : *Journal d'entrée du Musée*, n° 35507.

**32751. Vase.** — Height 0 m. 09 cent., breadth 0 m. 09 cent. — Fag el Gamus, 1902 (Grenfell and Hunt) (pl. X).

Rather squat body with concave base; wide neck and spreading mouth with rim doubled inwards. The body is covered with narrow spiral fluting or ribbing.

COLOUR : Yellowish green.

TECHNIQUE : Fine-blown and evenly shaped except that rim is not quite regular.

PRESERVATION : Broken in three places; inside partly incrustated with sand.

BIBL. : *Journal d'entrée du Musée*, n° 35513.

**32752. Small jug.** — Height 0 m. 082 mill., breadth 0 m. 05 cent. — Fag el Gamus, 1902 (Grenfell and Hunt) (pl. X).

Globular body; ring-foot; fairly long neck with spreading mouth and rounded rim;



flat, vertical handle, the top being bent double against underside of mouth; ring round lower part of neck.

COLOUR : Pale purple; but handle, ring round neck, and ring-foot, which were all attached separately, are made of pale green glass.

PRESERVATION : Half of mouth broken off.

BIBL. : *Journal d'entrée du Musée*, n° 35509.

**32753. Vase.** — Height 0 m. 10 cent., breadth 0 m. 09 cent. — Sela (Grenfell and Hunt), 1902 (pl. X).

Rather sharply curved shoulder; ring-foot; ring round root of neck. The body is decorated with thin vertical lines in relief, about 0 m. 025 mill. from each other.

COLOUR : Pale purple, but neck-ring and base-ring are colourless.

TECHNIQUE : Mark of separation on base; vertical lines as on n° 32566; rings added separately.

PRESERVATION : Mouth broken off.

BIBL. : *Journal d'entrée du Musée*, n° 35505.

**32754. Vase.** — Height 0 m. 125 mill., breadth 0 m. 068 mill. — Behnesa (Oxyrynchus) (pl. X).

For shape see illustration; slight ring-foot; coil round lower part of neck and ring round lower part of body; hollow in base.

COLOUR : Colourless.

PRESERVATION : Intact but dirty.

BIBL. : *Journal d'entrée du Musée*, n° 36045.

**32755. Large bottle.** — Height 0 m. 23 cent., breadth 0 m. 21 cent. — Harabel el Hamam, Roubyat (pl. X).

Broad across base; short neck, narrowing towards top; small spreading mouth; deep conical hollow in base.

COLOUR : Greenish blue.

TECHNIQUE : Mark of separation on base; rim roughly finished off.

PRESERVATION : Decomposed and iridescent.

BIBL. : *Journal d'entrée du Musée*, n° 35766.

- 32756. Bottle.** — Height 0 m. 162 mill., breadth 0 m. 06 cent. — Fag el Gamus, 1902 (Grenfell and Hunt) (pl. X).

Same type as n° 32596; long sloping shoulder; depression round foot of neck; flat rim with turned-in edge; base slightly concave.

COLOUR : Greenish yellow.

PRESERVATION : Inside dirty.

BIBL. : *Journal d'entrée du Musée*, n° 35506.

- 32757. Bottle.** — Height 0 m. 15 cent., breadth 0 m. 07 cent. — Fag el Gamus, 1902 (Grenfell and Hunt).

Same type as n° 32641.

COLOUR : Green.

PRESERVATION : Intact; some dirt on inside.

BIBL. : *Journal d'entrée du Musée*, n° 35510.

- 32758. Bottle.** — Height 0 m. 21 cent., breadth 0 m. 07 cent. — Fag el Gamus, 1902 (Grenfell and Hunt).

Long-necked bottle of same type as n° 32636; concave base.

COLOUR : Dark green.

TECHNIQUE : Mark of separation on base; a break in the doubled-over rim shows it to be hollow inside; some roughnesses on surface of glass.

PRESERVATION : Rim broken; white decomposition here and there.

BIBL. : *Journal d'entrée du Musée*, n° 35512.

- 32759. Bottle.** — Height 0 m. 10 cent., breadth 0 m. 04 cent. — Fag el Gamus, 1902 (Grenfell and Hunt).

Same type as n° 32677, pl. VIII.

COLOUR : Green.

TECHNIQUE : Mark of separation on base.

PRESERVATION : Intact.

BIBL. : *Journal d'entrée du Musée*, n° 35511.

- 32760. Vase.** — Height 0 m. 16 cent., breadth 0 m. 06 cent. — Fag el Gamus, 1902 (Grenfell and Hunt) (pl. X).

For shape see illustration; thick rim, doubled downwards and then inwards; thin coil round neck.


COLOUR : Streaky purple; coil pale green.

TECHNIQUE : Coarse mark of separation on base.

PRESERVATION : Part of coil broken off, otherwise in good condition.

BIBL. : *Journal d'entrée du Musée*, n° 35508.

- 32761.** Small saucer. — Painted glass. — Height 0 m. 009 mill., diam. 0 m. 04 cent. (pl. X).

Shaped like a segment of a small globe, with sharp-cut edge; the glass is colourless. Painted design on the interior. On one side is an animal (gazelle according to *Guide*) galloping to left; papyrus or lotus plants in the background, arranged in threes . The design on the opposite side is similar except that the animal is moving to right.

COLOUR : Outlines and inner markings in black; animals brown, with white on belly and front of neck.

PRESERVATION : Surface worn and part of design obliterated.

BIBL. : MASPERO, *Guide*, 1883, p. 112, n° 3153.

- 32762.** Fragment of glass with relief. — Height 0 m. 035 mill., breadth 0 m. 035 mill. — Mit Rahineh (pl. X).

Comic mask in relief from a glass vessel. The mouth is wide open and the brows are contracted; eyes rendered by small rings in relief; the wig comes to a point over middle of forehead and hangs down on each side.

COLOUR : Dark streaky green, nearly black.

TECHNIQUE : The mask has been made with an open mould or stamp and soldered on to the wall of the vessel; streaky, corrugated surface.

PRESERVATION : Broken right round the mask.

BIBL. : *Journal d'entrée du Musée*, n° 35867.

- 32763.** Fragment of glass with relief. — Height 0 m. 041 mill., breadth 0 m. 036 mill. (pl. X).

Comic mask of same type and technique as n° 32762. The mouth is not so large and the eyes are represented by round holes.

COLOUR : Originally green.

PRESERVATION : Broken right round the mask; small break on chin; decomposed.

- 32764.** Fragment of glass with relief. — Height 0 m. 0/4 cent., breadth 0 m. 035 mill. — Louxor (?).

Comic mask exactly like n° 32763 and possibly from same mould.

PRESERVATION : Much worn and decomposed.

Bibl. : *Journal d'entrée du Musée*, n° 28720.

- 32765.** Fragment of glass with relief <sup>(1)</sup>. — Height 0 m. 0/4 cent., breadth 0 m. 0/4 cent.

Comic mask like n° 32763-32764, originally pale green, with streaky corrugated surface.

PRESERVATION : Lower part of medallion broken; decomposed and iridescent.

- 32766.** Fragment of glass with relief. — Height 0 m. 0/41 mill., breadth 0 m. 033 mill. (pl. X).

Head of poor style, to front, with thick roll of hair on each side of forehead; short lines in relief round outline of left cheek and traces of others on right side also. The medallion is attached to a convex fragment of glass, perhaps the neck of a vessel, and there is a projecting horizontal strip below.

COLOUR : Pale green, almost colourless.

TECHNIQUE : Like the preceding; good surface, except for line through left cheek.

PRESERVATION : Broken all round the medallion.

- 32767.** Medallion. — Glass. — Height 0 m. 026 mill., breadth 0 m. 02/4 mill. (pl. X).

Female mask in fairly high relief, with loose hair, contracted brows and holes for eyes : perhaps Medousa.

COLOUR AND TECHNIQUE : The mask is moulded of white glass and is fastened to a roughly shaped disk of black glass.

PRESERVATION : Worn a good deal.

- 32768.** Medallion. — Glass. — Height 0 m. 03/4 mill., breadth 0 m. 033 mill. (pl. X).

Mask of a lion with hair sticking out round head. Has been attached to a glass vessel like n° 32762 ff.

<sup>(1)</sup> Either n° 32763 or 32765 (but more probably the latter) must be identical with n° 5798 in the *Guide* of 1883 and in the slip-catalogue. It is described thus : — Verre irisé. — Haut. 0 m. 0/4 cent. — Alexandrie. — Petit masque comique; bouton détaché d'un vase en verre.

COLOUR : Green.

TECHNIQUE : Like n° 32762-32766.

PRESERVATION : Broken all round the medallion.

**32769. Medallion.** — Glass. — Diameter 0 m. 0.25 mill. (pl. X).

Representation of a winged and naked Eros in low relief; he advances to right, with head and shoulders turned to front, holding out bow in left hand and with right hand laid against breast. Has been attached to a glass vessel like n° 32762 ff.; rather rough surface with circular marks; deep rounded back.

COLOUR : Opaque white.

TECHNIQUE : Like the preceding.

PRESERVATION : Somewhat worn; broken all round the medallion.

**32770. Medallion.** — Glass. — Diameter 0 m. 0.24 mill. (pl. X).

Similar to n° 32769; right hand seems to hang behind, but not quite clear; not from same mould as n° 32769.

COLOUR : Opaque white.

PRESERVATION : Broken away all round the medallion.

---

## APPENDIX.

**32771. Jug.** — Height 0 m. 178 mill., breadth 0 m. 10 cent. — Erment, 1904 (pl. XI).

Roughly flattened on four sides; rounded shoulder; short neck; wide flat rim with rounded edge; broad fluted handle; ring below rim. Base and sides are slightly concave.

COLOUR : Pale yellowish green.

TECHNIQUE : Mark of separation on base; handle and ring attached; small bubbles in glass and impurities in handle.

PRESERVATION : Rim broken on one side; crack in base.

BIBL. : *Journal d'entrée du Musée*, n° 37619.

**32772. Bottle.** — Height 0 m. 25 cent., breadth 0 m. 11 cent. — Erment, 1904 (pl. XI).

Rudely flattened on four sides; rounded at base and shoulder; neck widens out towards

top, and the upper part of it is encircled by a coil. Rather deep hollow in base; sides more or less concave.

COLOUR : Pale green tinge.

TECHNIQUE : Light but not very regular; rough mark of separation on base; coil added; a few bubbles in glass.

PRESERVATION : Coil chipped.

BIBL. : *Journal d'entrée du Musée*, n° 37618.

**32773. Bottle.** — Height 0 m. 685 mill. — Erment, 1904 (pl. XI).

Tall cylindrical vase with narrow neck; spreading mouth and rounded rim; it contracts a little towards base and ends below in a knob.

COLOUR : Pale green; knob dark green, the glass being thicker there.

TECHNIQUE : Blown fairly thin; a few air-bubbles.

PRESERVATION : Dirty and slightly iridescent.

BIBL. : *Journal d'entrée du Musée*, n° 37615.

**32774. Bottle.** — Height 0 m. 63 cent. — Erment, 1904 (pl. XI).

Like n° 32773 except that base is flat; slight bulge round shoulder; pale yellowish green.

PRESERVATION : Dirty and slightly iridescent.

BIBL. : *Journal d'entrée du Musée*, n° 37616.

**32775. Bottle.** — Height 0 m. 635 mill. — Erment, 1904.

Same as n° 32774; mouth broken on one side.

**32776. Bottle.** — Height 0 m. 595 mill. — Erment, 1904.

Like n° 32774 and 32775; intact.

**32777. Bottle.** — Height 0 m. 56 cent. — Erment, 1904.

Like n° 32774-32776; neck broken off.

**32778. Cup.** — Height 0 m. 06 cent., diam. 0 m. 115 mill. — Kum Ushim, Fayoum, 1905 (pl. XI).

Vase of same shape as n° 32433; slanting markings on foot.

COLOUR : Transparent green glass.

TECHNIQUE : Fairly light; small bubbles in glass; mark of separation on base.

PRESERVATION : Uninjured.

BIBL. : *Journal d'entrée du Musée*, n° 37786.

- 32779. Cup.** — Height 0 m. 063 mill., diam. 0 m. 115 mill. — Kum Ushim, Fayoum, 1905.

Same as n° 32778, with which it forms a pair; foot broken.

BIBL. : *Journal d'entrée du Musée*, n° 37786.

- 32780. Vase.** — Height 0 m. 115 mill., diam. 0 m. 055 mill. — Kum Ushim, Fayoum, 1905.

Same shape as n° 32488, pl. III.

COLOUR AND TECHNIQUE : Same as n° 32778, 32779.

PRESERVATION : Intact; slight incrustation.

BIBL. : *Journal d'entrée du Musée*, n° 37785.

- 32781. Jug.** — Height 0 m. 205 mill., diam. 0 m. 07 cent. — Kum Ushim, Fayoum, 1905 (pl. XI).

For shape see illustration; broad vertical handle rising a little above rim; ring round middle of neck and narrow coil round top; impressed markings on foot.

COLOUR : Green like n° 32778-32780; darker where glass is thicker.

TECHNIQUE : Mark of separation on base; small air-bubbles; glass of handle impure; accessories attached.

PRESERVATION : Intact; inside dirty.

BIBL. : *Journal d'entrée du Musée*, n° 37784.

- 32782. Bottle.** — Height 0 m. 215 mill., diam. 0 m. 13 cent. — Kum Ushim, Fayoum, 1905 (pl. XI).

Same type as n° 32558; similar collar; rim doubled in; base slightly concave.

COLOUR : Pale yellowish green tinge.

TECHNIQUE : Fine-blown; collar added.

PRESERVATION : Unbroken but incrustated.

BIBL. : *Journal d'entrée du Musée*, n° 37783.

*Catal. du Musée*, n° 32401.

32783. **Bottle.** — Height 0 m. 075 mill., diam. 0 m. 065 mill. — Kum Ushim, Fayoum, 1905 (pl. XI).

For shape see illustration; cylindrical neck; vertical ribs at intervals round body; concave base.

COLOUR : Light purple tinge.

TECHNIQUE : Mark of separation on base; a few air-bubbles and impurities; accidental dent on one side.

PRESERVATION : Intact.

BIBL. : *Journal d'entrée du Musée*, n° 37787.

32784. **Vase.** — Height 0 m. 085 mill., breadth 0 m. 087 mill. — Mit Rahineh, 1905 (pl. XI).

For shape see illustration; rather thick ring-foot; mouth spreads outwards and edge of rim is turned down.

COLOUR : Faint green tinge, but has been nearly colourless originally.

TECHNIQUE : Blown fairly thin; mark of separation on base.

PRESERVATION : Rim broken; iridescent.

BIBL. : *Journal d'entrée du Musée*, n° 37781.

32785. **Saucer.** — Height 0 m. 03 cent., diam. 0 m. 137 mill. — Mit Rahineh, 1905 (pl. XI).

Shallow vessel with nearly perpendicular sides and wide horizontal rim; protuberance in middle of base. Impressed pattern on base as sketched, the lines being in relief.

System of impressed markings round sides also.



COLOUR : Pale green glass full of white streaks.

TECHNIQUE : Impurities in glass; mark of separation on base. The impressed markings show both on the outside and the inside (cf. n° 32475).

PRESERVATION : Intact.

BIBL. : *Journal d'entrée du Musée*, n° 37781.

32786. **Small bottle.** — Height 0 m. 06 cent. — Mit Rahineh, 1905 (pl. XI).

Globular body and long neck with spreading mouth.



COLOUR : Originally green (?).

PRESERVATION : Iridescent; inside incrustated with soil.

BIBL. : *Journal d'entrée du Musée*, n° 37781.

- 32787. Small bottle.** — Height 0 m. 055 mill. — Kum Ushim (or Mit Rahineh?), 1905 (pl. XI).

Rather wide body; long neck and spreading mouth; flat base.

COLOUR : Pale green tinge.

TECHNIQUE : Fine-blown; impurities in glass; mark of separation on base.

PRESERVATION : Intact.

BIBL. : *Journal d'entrée du Musée*, n° 37788.

- 32788. Bottle.** — Height 0 m. 072 mill. — Mit Rahineh, 1905 (pl. XI).

Straight-sided octagonal body; rounded shoulder; rather wide cylindrical neck; flat base.

COLOUR : Green.

TECHNIQUE : Mark of separation on base.

PRESERVATION : Intact.

BIBL. : *Journal d'entrée du Musée*, n° 37781.

- 32789. Bottle.** — Height 0 m. 16 cent. — Mit Rahineh, 1905 (pl. XI).

Long narrow body with vertical flutings; neck widens out towards top.

COLOUR : Very dark, nearly black.

TECHNIQUE : Blown fairly thick; mark of separation on base.

PRESERVATION : Film of decomposition here and there.

BIBL. : *Journal d'entrée du Musée*, n° 37781.

- 32790. Bottle.** — Height 0 m. 147 mill. — Mit Rahineh, 1905 (pl. XI).

Same general shape as n° 32789; the body is heptagonal with flat facets; also upper part of neck.


COLOUR : Almost colourless originally.

TECHNIQUE : Thick glass; mark of separation on base; the facets have been filed flat.

PRESERVATION : Slightly chipped; white film on part of surface.

BIBL. : *Journal d'entrée du Musée*, n° 37781.

32791. Small bottle. — Height 0 m. 065 mill. — Mit Rahineh, 1905 (pl. XI).

Roughly rectangular body standing on four short pointed legs; neck widens out towards top. Impressed pattern of this form  round body; three vertical flattenings round neck.

COLOUR : Green.

TECHNIQUE : Comparatively thick glass; legs and ornamentation cut and filed.

PRESERVATION : One leg broken, the others chipped.

BIBL. : *Journal d'entrée du Musée*, n° 37781.

32792. Small bottle. — Height 0 m. 067 mill. — Mit Rahineh, 1905.

Same general shape as n° 32791. Six flattened facets round upper part of neck. Flattened face down each corner of body; sunken line down middle of each side and another across lower end. The legs have also been ornamented.


COLOUR : Originally green.

TECHNIQUE : Like n° 32791.

PRESERVATION : Legs broken; covered for most part with thick white patina.

BIBL. : *Journal d'entrée du Musée*, n° 37781.

32793. Small bottle. — Height 0 m. 05 cent. — Mit Rahineh, 1905 (pl. XI).

Of same type as the preceding, but with neck filed off. Sunken line down top of each side and groove across foot. The corners are deeply cut in a pattern of this form  a projection being left in the middle. Pointed legs, with deep cutting between each pair.

COLOUR : Faint green tinge, but nearly colourless.

TECHNIQUE : Like n° 32791.

PRESERVATION : Two legs broken, the other two chipped; the neck has been filed off in ancient times.

BIBL. : *Journal d'entrée du Musée*, n° 37781.

32794. Tiny vase. — Height 0 m. 025 mill. — Mit Rahineh, 1905 (pl. XI).

Flat top with round opening; flat base; broadest across lower half. The body is encircled by four flattened spaces, oval in form, with a round stud in the middle of each; notch above between each pair.

COLOUR : Nearly colourless; faint green tinge.  
 TECHNIQUE : Like the preceding; mark on base.  
 PRESERVATION : Entire.

BIBL. : *Journal d'entrée du Musée*, n° 37781.

32795. Tiny cup. — Height 0 m. 02 cent. — Mit Rahineh, 1905 (pl. XI).

Cylindrical, with flat base. Cut pattern of this form round about. 

COLOUR AND TECHNIQUE : Like n° 32794.  
 PRESERVATION : Rim chipped.

BIBL. : *Journal d'entrée du Musée*, n° 37781.

32796. Tiny vase. — Height 0 m. 03 cent. — Mit Rahineh, 1905.

Like n° 32719, but the neck is broken off. Cut pattern round body as shown; groove

round foot. 

COLOUR AND TECHNIQUE : Like the preceding.  
 PRESERVATION : Neck broken off.

BIBL. : *Journal d'entrée du Musée*, n° 37781.

32797. Tiny vase. — Height 0 m. 048 mill. — Mit Rahineh, 1905.

Small flattened bottle like n° 32722, pl. IX.

COLOUR : Light green.

TECHNIQUE : Mark of separation on base.

PRESERVATION : Rim broken.

BIBL. : *Journal d'entrée du Musée*, n° 37781.

32798. Tiny vase. — Height 0 m. 04 cent. — Mit Rahineh, 1905 (pl. XI).

Same type as n° 32726, pl. IX; the lower part widens out slightly. Light green tinge.  
 Mark on base.

PRESERVATION : Rim broken on one side.

BIBL. : *Journal d'entrée du Musée*, n° 37781.

32799. **Tiny vase.** — Height 0 m. 035 mill. — Mit Rahineh, 1905.

Same type as n° 32726, pl. IX. Light green tinge. Small hole in base.

BIBL. : *Journal d'entrée du Musée*, n° 37781.

32800. **Bottle.** — Height 0 m. 135 mill. — Behnesa (Oxyrynchus), 1904; from Grenfell and Hunt.

Same type as n° 32667, pl. VIII; thick green glass; mark of separation on base; slight iridescence.

BIBL. : *Journal d'entrée du Musée*, n° 36636.



# INDEX I.

## TO FORMER MUSEUM CATALOGUES<sup>(1)</sup>.

| CATALOGUE<br><i>GÉNÉRAL.</i> | <i>JOURNAL D'ENTRÉE.</i> | MASPERO,<br><i>GUIDE</i> , 1883<br>and <i>Slip-catalogue</i> <sup>(a)</sup> . | <i>NOTICE</i> ,<br>1892-1897. |
|------------------------------|--------------------------|---|-------------------------------|
| Numbers.                     | Numbers.                 | Numbers.  | Numbers.                      |
| 32401                        | 28138                    |   |                               |
| 32402                        | 28139                    |   |                               |
| 32416                        | 27795                    |   |                               |
| 32418                        | 27796                    |   |                               |
| 32419                        | 27797                    |   |                               |
| 32420                        | 27798                    |   |                               |
| 32421                        | 28141                    |   |                               |
| 32424                        | 27800                    |   |                               |
| 32437                        | 27799                    |   |                               |
| 32444                        |                          |   | 324                           |
| 32454                        | 30094 (?)                |   |                               |
| 32458                        | 30093                    |   |                               |
| 32462                        | 28340                    |   |                               |
| 32463                        | 30091                    |   |                               |
| 32465                        | 300 . .                  |   |                               |
| 32467                        | 28137                    |   |                               |
| 32468                        | 30089                    |   |                               |
| 32469                        |                          | 3208*   |                               |
| 32472                        | 26730 (?)                |   |                               |
| 32473                        | 26732                    |   |                               |
| 32474                        | 26733                    |   |                               |
| 32475                        | 30027                    |   |                               |
| 32476                        | 30028                    |   |                               |
| 32485                        | 30853                    |   |                               |
| 32486                        | 30853                    |   |                               |

(a) Those that are entered in the *Slip-catalogue* only are marked with an asterisk.

<sup>(1)</sup> There are between sixty and seventy glass vases numbered in the *Journal d'entrée* which I have been unable to identify, owing in most cases to the insufficiency of the description.

| <i>CATALOGUE</i><br><i>Général.</i> | <i>JOURNAL D'ENTRÉE.</i> | MASPERO,<br><i>GUIDE, 1883</i><br><i>and Slip-catalogue.</i> | <i>NOTICE,</i><br><i>1892-1897.</i> |
|-------------------------------------|--------------------------|--|-------------------------------------|
| Numbers.                            | Numbers.                 | Numbers.   | Numbers.                            |
| 32487                               | 28342                    |  |                                     |
| 32505                               |                          |  | 322                                 |
| 32518                               | 19943                    | 3162*  |                                     |
| 32520                               | 28334                    |  |                                     |
| 32524                               |                          | 3209*  |                                     |
| 32525                               | 28332                    |  |                                     |
| 32527                               |                          | 3189*  |                                     |
| 32533                               |                          | 3154*(?)   |                                     |
| 32537                               | 28333                    |  |                                     |
| 32538                               |                          |  |                                     |
| 32540                               | 26869                    |  |                                     |
| 32541                               | 26405(?)                 | 3088*  |                                     |
| 32542                               | 6189                     | 3202*  |                                     |
| 32545                               | 29825                    |  |                                     |
| 32556                               | 30098                    |  |                                     |
| 32565                               |                          |  | 328                                 |
| 32566                               | 27791                    |  |                                     |
| 32567                               | 28131                    |  |                                     |
| 32568                               | 28132                    |  |                                     |
| 32569                               | 28136                    |  |                                     |
| 32571                               | 32961                    |  |                                     |
| 32572                               | 26400                    |  |                                     |
| 32573                               | 29424                    |  |                                     |
| 32574                               | 28339                    |  |                                     |
| 32575                               |                          | 3149   |                                     |
| 32577                               | 29884                    |  |                                     |
| 32579                               | 26398(?)                 |  |                                     |
| 32580                               | 26399(?)                 |  |                                     |
| 32584                               | 28134                    |  |                                     |
| 32585                               | 28135                    |  |                                     |
| 32587                               | 26868                    |  |                                     |
| 32588                               | 29823                    |  |                                     |
| 32590                               | 29824                    |  |                                     |
| 32592                               | 22149                    | 3221*  |                                     |
| 32593                               | 28335                    |  |                                     |
| 32594                               | 30100                    |  |                                     |

| CATALOGUE<br><i>Général.</i> | JOURNAL D'ENTRÉE. | MASPEO,<br><i>Giorn.</i> , 1883<br>and <i>Slip-catalogue.</i> | NOTICE,<br>1892-1897. |
|------------------------------|-------------------|---|-----------------------|
| Numbers.                     | Numbers.          | Numbers.  |                       |
| 32596                        | 28337             |   |                       |
| 32602                        | 27801             |   |                       |
| 32603                        | 27801             |   |                       |
| 32607                        | 30102             |   |                       |
| 32608                        | 29886             |   |                       |
| 32614                        | 26865             |   |                       |
| 32617                        | 30099             |   |                       |
| 32623                        | 26723             |   |                       |
| 32625                        | 26864             |   |                       |
| 32629                        | 27792             |   |                       |
| 32631                        | 28043             |   |                       |
| 32634                        |                   | 3224*   |                       |
| 32637                        | 28044             |   |                       |
| 32639                        | 27793             |   |                       |
| 32640                        | 4902              | 3251  |                       |
| 32641                        |                   | 3223*   |                       |
| 32642                        |                   | 3219*   |                       |
| 32643                        | 11564             | 2872*   |                       |
| 32645                        |                   | 3206*   |                       |
| 32646                        |                   | 3055*   |                       |
| 32649                        |                   | 2899*   |                       |
| 32651                        | 11562             | 2739*   |                       |
| 32652                        |                   | 3054*   |                       |
| 32653                        |                   | 3236*   |                       |
| 32654                        |                   | 3082*   |                       |
| 32661                        | 30296             |   |                       |
| 32662                        | 28041             |   |                       |
| 32663                        | 19961             | 2878*   |                       |
| 32664                        | 19957             | 4774*   |                       |
| 32665                        | 27794             |   |                       |
| 32666                        | 32952             |   |                       |
| 32667                        |                   | 3222*   |                       |
| 32668                        |                   | 3333*   |                       |
| 32669                        |                   | 3083*   |                       |
| 32670                        |                   | 3290*   |                       |
| 32672                        | 11561             | 3334*   |                       |

| <i>CATALOGUE</i><br><i>Général.</i> | <i>JOURNAL D'ENTRÉE.</i> | <i>MASPERO,</i><br><i>Grive, 1883</i><br><i>and Slip-catalogue.</i> | <i>NOTICE,</i><br><i>1892-1897.</i> |
|-------------------------------------|--------------------------|---|-------------------------------------|
| Numbers.                            | Numbers.                 | Numbers.  | Numbers.                            |
| 32673                               |                          | 2740*   |                                     |
| 32674                               |                          | 2876*   |                                     |
| 32675                               | 19971                    | 2873*   |                                     |
| 32676                               | 28042                    |   |                                     |
| 32677                               | 19964                    | 2877*   |                                     |
| 32680                               |                          | 3265  |                                     |
| 32682                               | 26866                    |   |                                     |
| 32683                               | 30101                    |   |                                     |
| 32693                               | 26403                    |   |                                     |
| 32694                               | 26740                    |   |                                     |
| 32697                               |                          | 3252  |                                     |
| 32698                               | 19944                    | 3148  |                                     |
| 32699                               | 28336                    |   |                                     |
| 32702                               |                          | 3254  |                                     |
| 32703                               |                          | 3211*   |                                     |
| 32705                               | 29821                    |   |                                     |
| 32706                               | 29822                    |   |                                     |
| 32707                               | 29820                    |   |                                     |
| 32708                               | 30044                    |   |                                     |
| 32709                               | 4904                     | 3217*   |                                     |
| 32710                               | 30045                    |   |                                     |
| 32712                               | 28351                    |   |                                     |
| 32713                               | 28338                    |   |                                     |
| 32714                               | 29425                    |   |                                     |
| 32715                               | 26404                    |   |                                     |
| 32716                               | 29883                    |   |                                     |
| 32718                               | 29887                    |   |                                     |
| 32730                               | 30570                    |   |                                     |
| 32731                               | 31192                    |   | 326                                 |
| 32732                               | 27506                    |   |                                     |
| 32733                               |                          | 3253  |                                     |
| 32734                               | 31197                    |   |                                     |
| 32736                               | 29888                    |   |                                     |
| 32738                               | 26729                    |   |                                     |
| 32739                               | 4906 or 4907             | 3232*   |                                     |
| 32740                               | 28341                    |   | 330                                 |

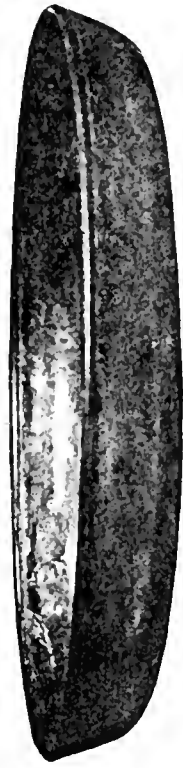


| CATALOGUE<br><i>GÉNÉRAL.</i> | JOURNAL D'ENTRÉE. | MASPERO,<br><i>Glob.</i> , 1883<br>and <i>Slip-catalogue.</i> | NOTICE,<br>1892-1897. |
|------------------------------|-------------------|---|-----------------------|
| Numbers.                     | Numbers.          | Numbers.  |                       |
| 32741                        | 28343             |   |                       |
| 32743                        | 32948             |   |                       |
| 32747                        | 27812             |   |                       |
| 32748                        | 27010             |   |                       |
| 32749                        | 36406             |   |                       |
| 32750                        | 35507             |   |                       |
| 32751                        | 35513             |   |                       |
| 32752                        | 35509             |   |                       |
| 32753                        | 35505             |   |                       |
| 32754                        | 36045             |   |                       |
| 32755                        | 35766             |   |                       |
| 32756                        | 35506             |   |                       |
| 32757                        | 35510             |   |                       |
| 32758                        | 35512             |   |                       |
| 32759                        | 35511             |   |                       |
| 32760                        | 35508             |   |                       |
| 32761                        |                   | 3153  |                       |
| 32762                        | 35887             |   |                       |
| 32764                        | 28720             |   |                       |
| 32765                        |                   | 5798(?)   |                       |
| 32771                        | 37619             |   |                       |
| 32772                        | 37618             |   |                       |
| 32773                        | 37615             |   |                       |
| 32774                        | 37616             |   |                       |
| 32778                        | 37786             |   |                       |
| 32780                        | 37785             |   |                       |
| 32781                        | 37784             |   |                       |
| 32782                        | 37783             |   |                       |
| 32783                        | 37787             |   |                       |
| 32784                        | 37781             |   |                       |
| 32785                        | 37781             |   |                       |
| 32786                        | 37781             |   |                       |
| 32787                        | 37788             |   |                       |
| 32788-32799                  | 37781             |   |                       |
| 32800                        | 36636             |   |                       |

## INDEX II.

## PROVENANCE.

- Alexandria, 32763 or 32765.  
 Aschnaounein, 32743.
- Balansourah, 32730.  
 Behnesa (*Oxyrynchus*), 32754, 32800.
- Erment, 32771-32777.
- Fag el Gamus, 32750-32752, 32756-32760.  
 Fayoum, 32444, 32505, 32545, 32565,  
 32588, 32590, 32661, 32705, 32706,  
 32707, 32731.
- Gournah, 32542.
- Harabet el Hamam, 32755.  
 Hawara, 32462, 32487, 32520, 32525,  
 32537, 32574, 32593, 32596, 32699,  
 32712, 32713, 32740, 32741.
- Hou, 32749.
- Kom Belal, 32734.  
 Koptos, 32592.  
 Kum Ushim, 32778-32783, 32787.
- Labyrinth, 32518, 32663, 32664, 32675,  
 32677, 32698.  
 Louxor, 32764 (?).
- Meir, 32485, 32486.  
 Mit Rahinch, 32454 (?), 32458, 32463,  
 32465, 32468, 32556, 32594, 32607,  
 32617, 32683, 32762, 32784-32799.
- Nagada, *see* Kom Belal.
- Roubyat, *see* Harabet el Hamam.
- Saqqarah, 32643, 32651, 32672.  
 Sela, 32753.



32.401



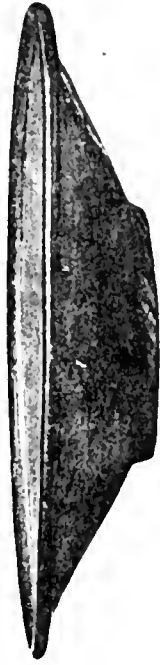
32.406



32.407



32.408



32.411



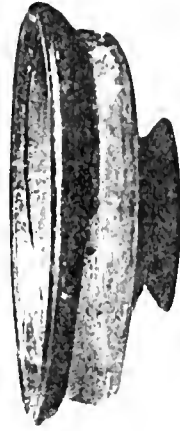
32.415



32.421



32.422



32.423



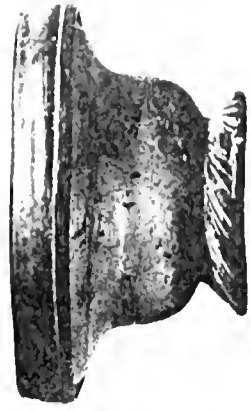
32.426



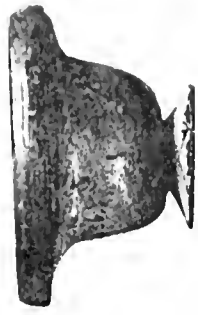
32.429



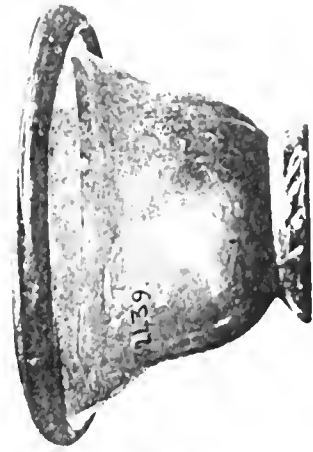
32.430



32.433



32.436

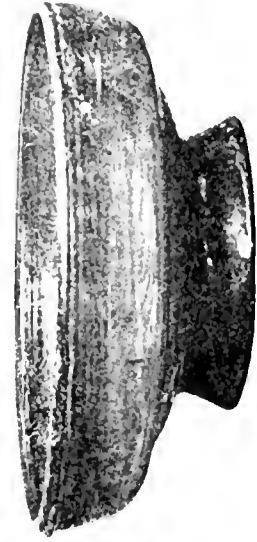


32.439

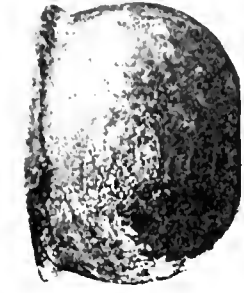




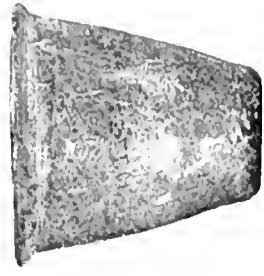
32.440



32.445



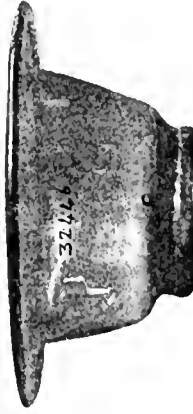
32.456



32.461



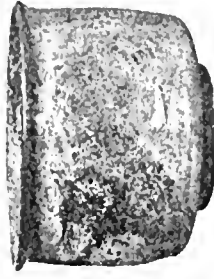
32.442



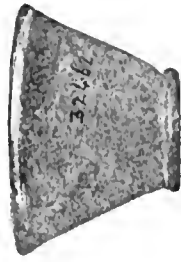
32.446



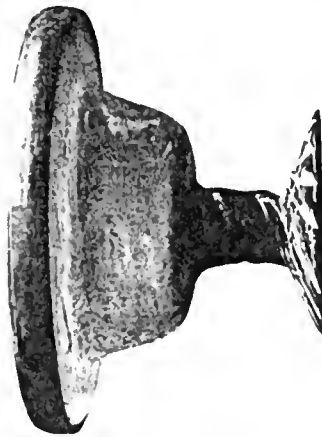
32.452



32.457



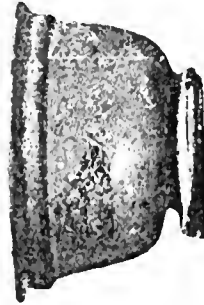
32.462



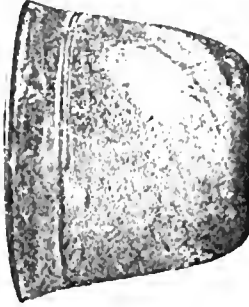
32.443



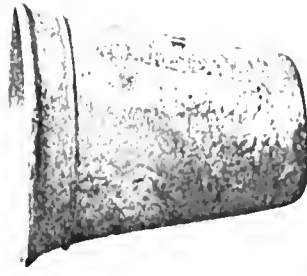
32.449



32.454



32.458



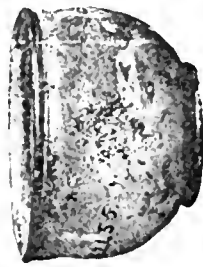
32.464



32.444



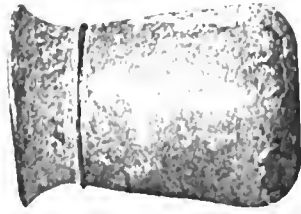
32.450



32.455



32.460

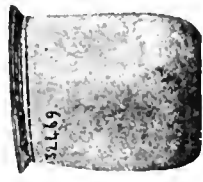


32.464



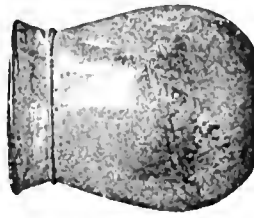


32.467



32.469

32.469



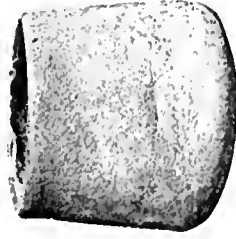
32.471



32.472



32.473



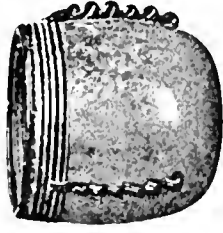
32.474



32.475



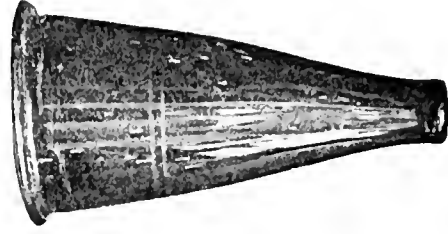
32.476



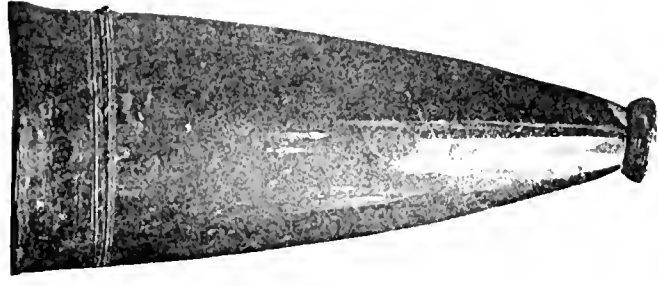
32.477



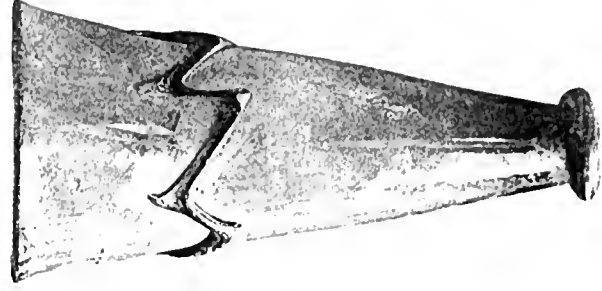
32.478



32.479



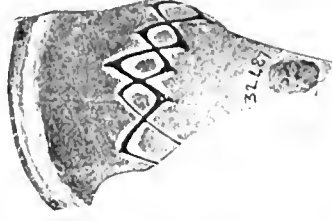
32.483



32.481



32.485



32.487

32.487

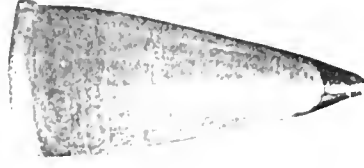


32.488



32.491

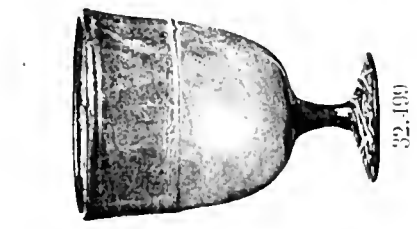
32.491



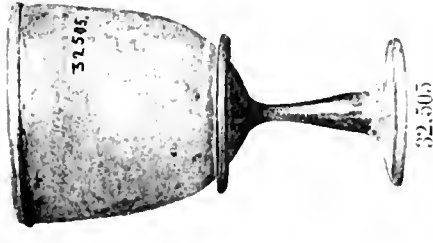
32.493



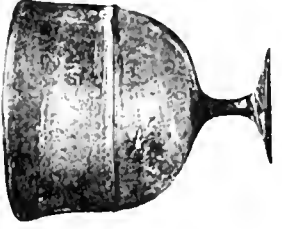




32.499



32.505



32.501



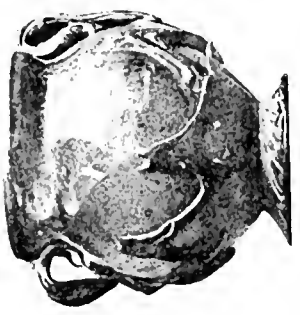
32.506



32.504



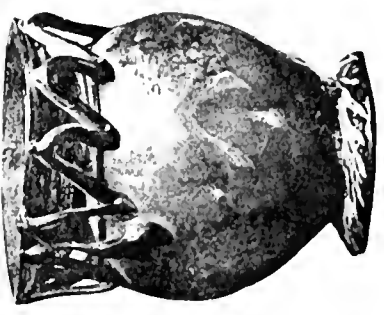
32.507



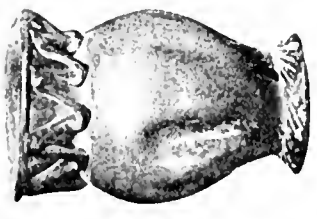
32.508



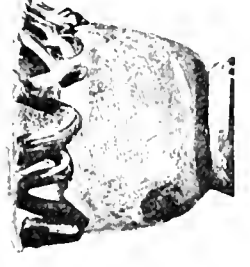
32.509



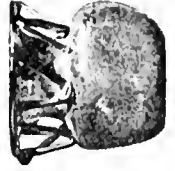
32.512



32.515



32.516



32.517



32.518



32.519



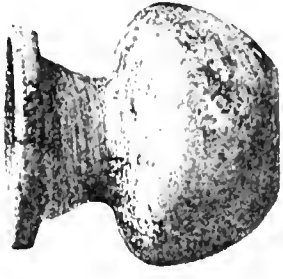
32.520



32.521



32.522



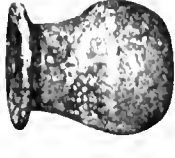
32.523



32.524



32.525



32.526



32.527



32.529



32.531



32.532



32.534



32.535



32.536



32.537



32.538



32.539

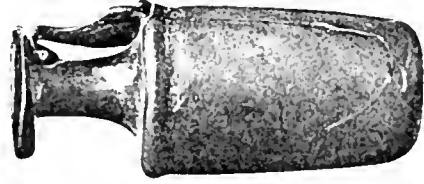




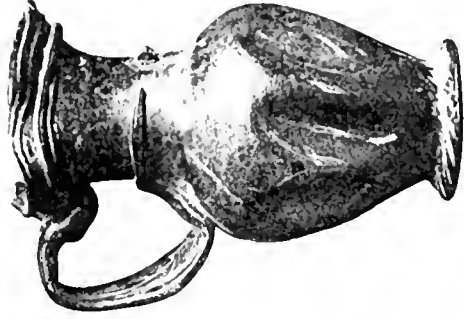
32.540



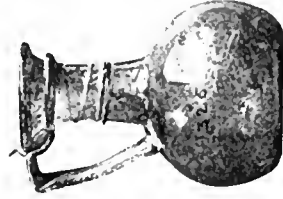
32.542



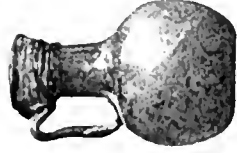
32.545



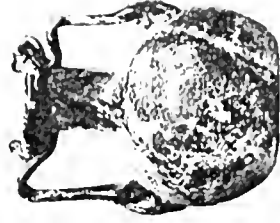
32.549



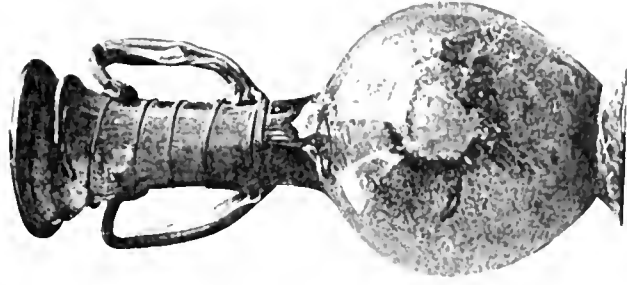
32.550



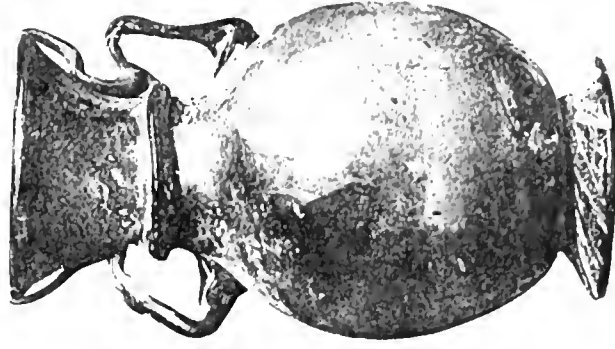
32.553



32.556



32.555



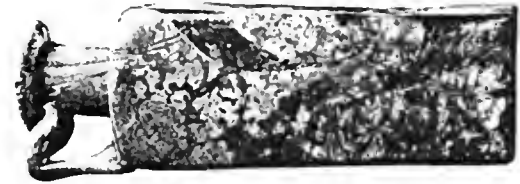
32.551



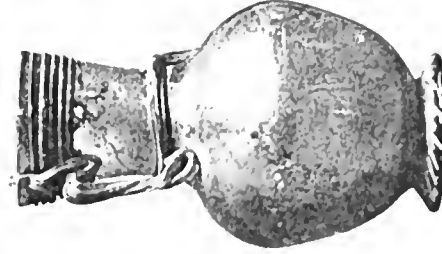
32.546



32.543

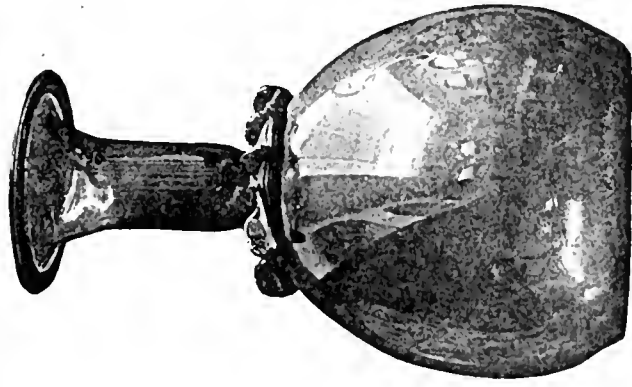


32.541



32.557





32.558



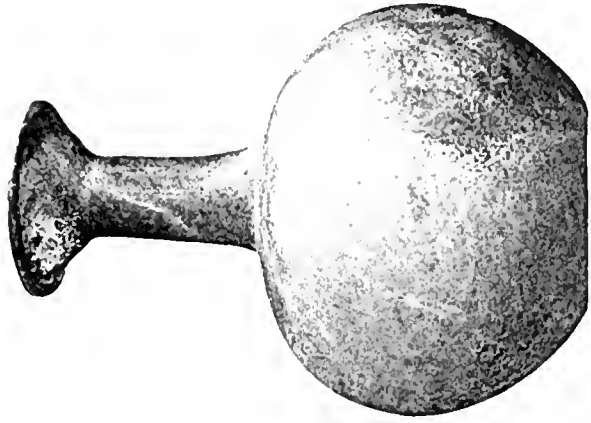
32.565



32.570



32.566



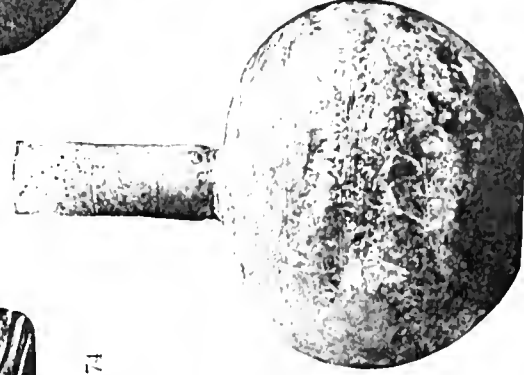
32.568



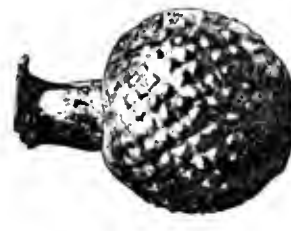
32.574



32.577



32.571



32.572



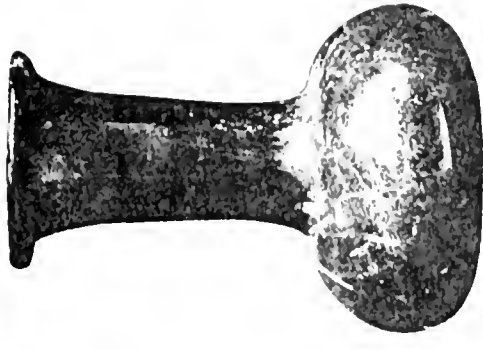
32.573



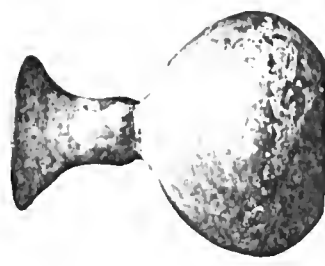
32.581



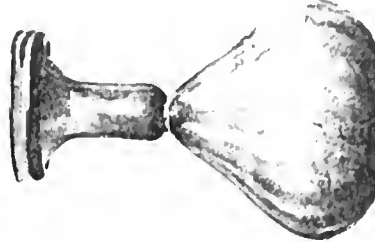
32.583



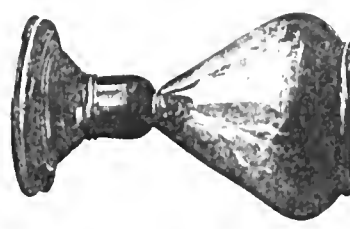
32.586



32.587

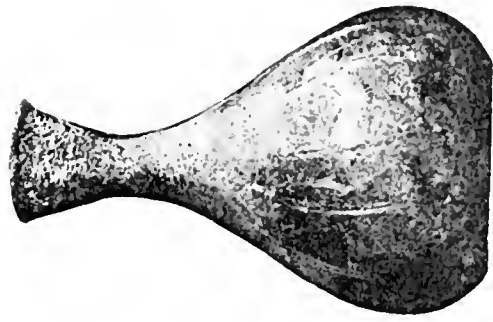


32.588

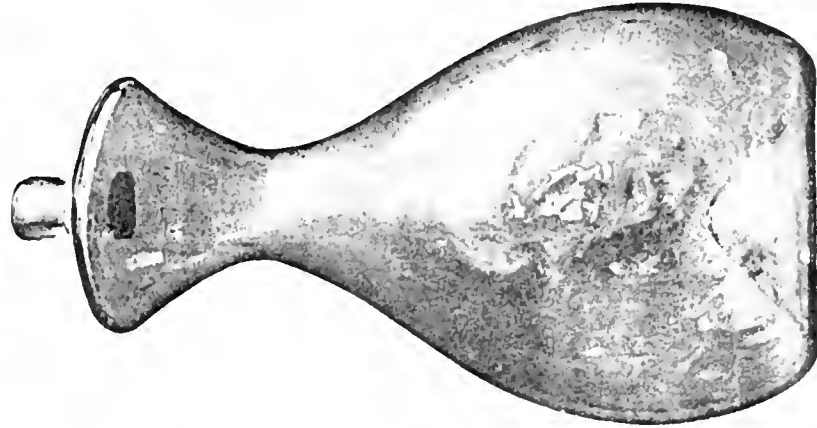


32.590

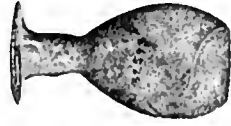




32.591



32.592



32.593



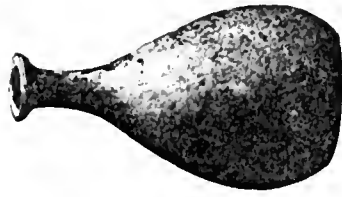
32.591



32.596



32.597



32.598



32.604



32.606



32.607



32.608



32.609



32.610



32.612



32.619



32.620



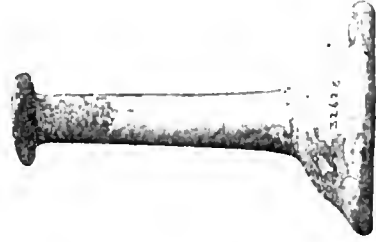
32.623



32.622



32.624



32.628



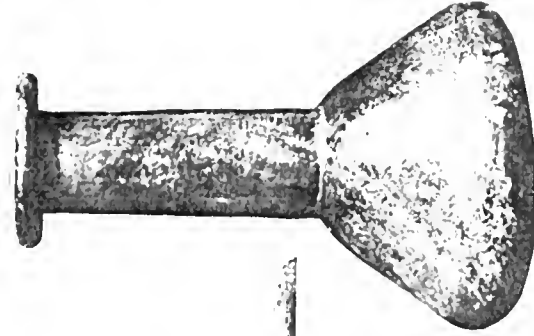
32.629



32.632



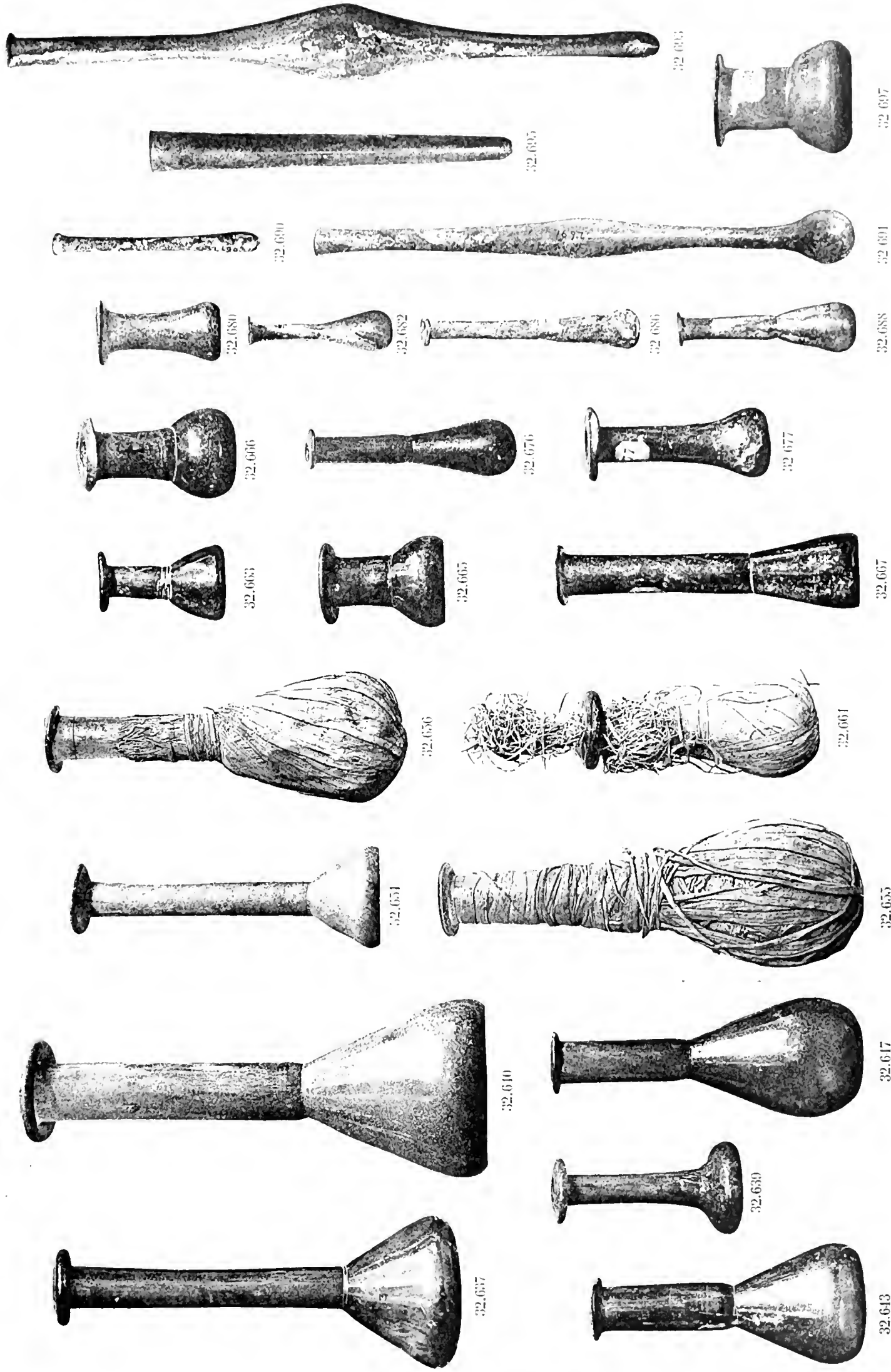
32.631



32.634











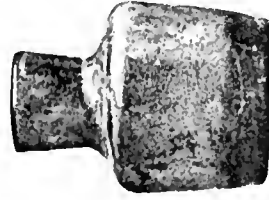
32.698



32.699



32.702



32.708



32.704



32.701



32.710



32.715



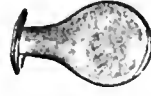
32.713



32.711



32.720



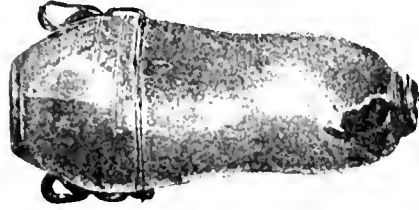
32.721



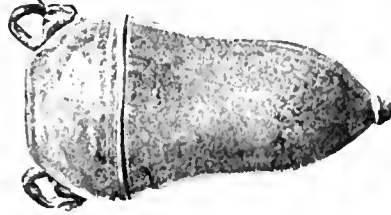
32.722



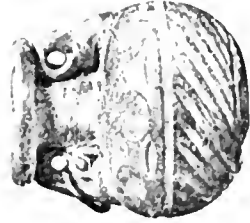
32.726



32.727



32.728



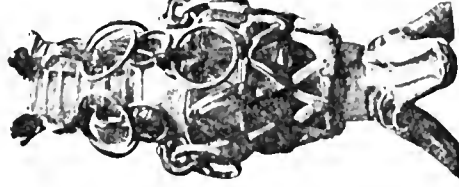
32.730



32.732



32.736



32.729

32.731



32.735



32.733



32.739



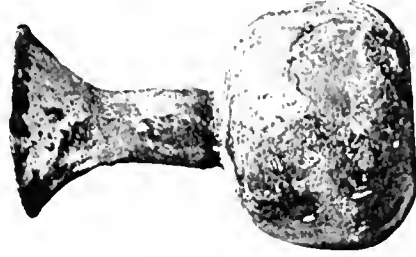
32.738



32.731



32.701



32.700

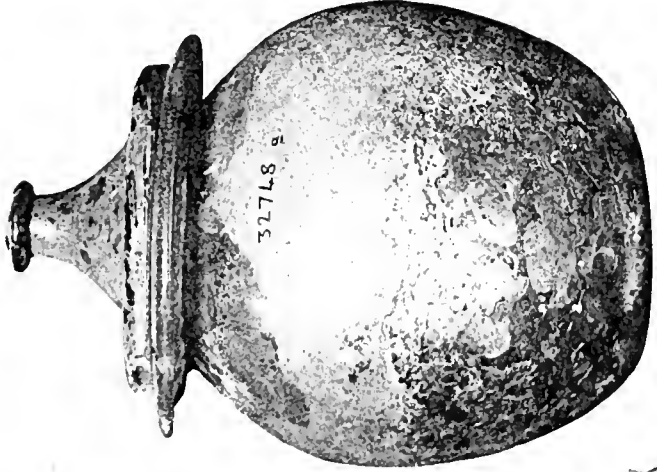




32.740



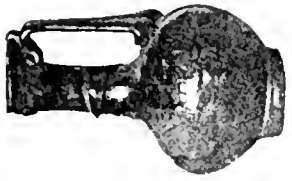
32.711



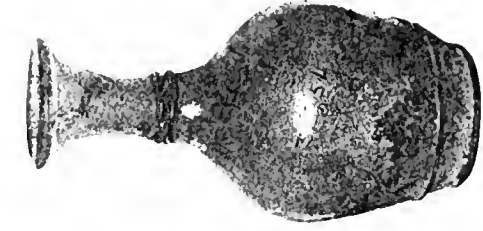
32.748



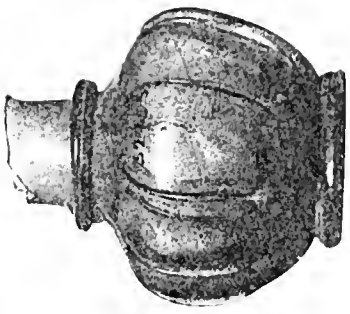
32.751



32.752



32.754



32.753



32.755



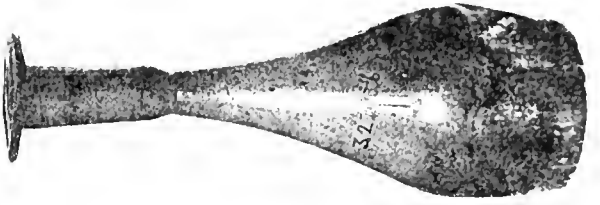
32.742



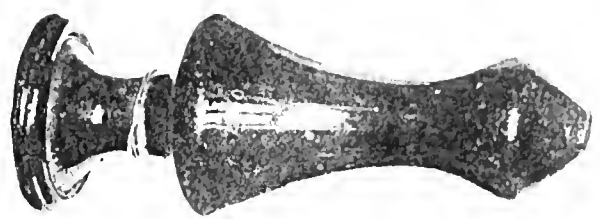
32.743



32.750



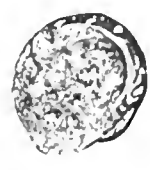
32.756



32.760



32.761



32.767



32.770



32.762



32.763



32.766



32.768

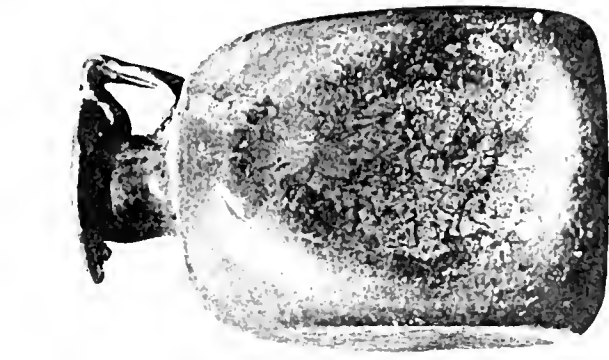


32.771



32.747

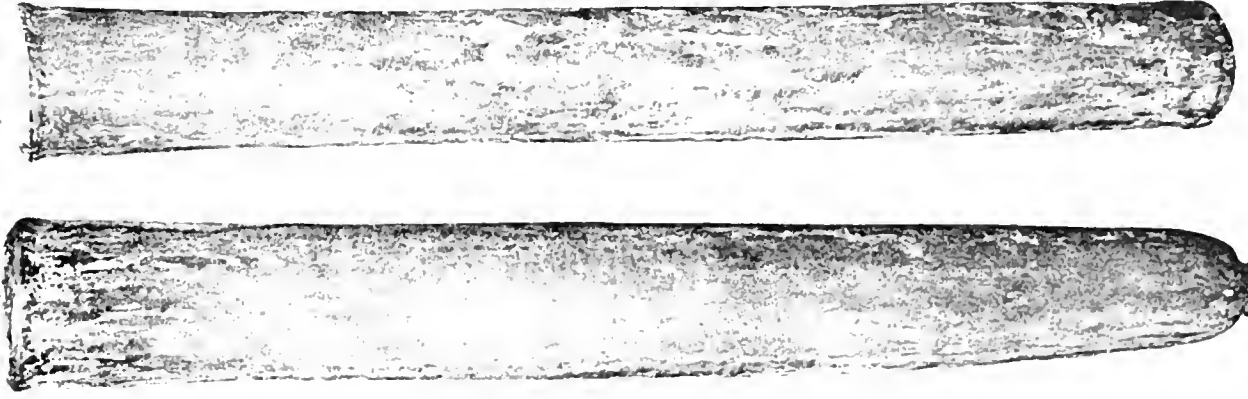




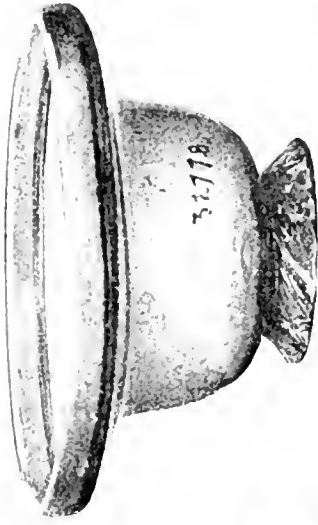
32.771



32.772



32.773

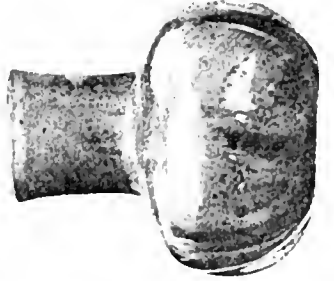


32.778

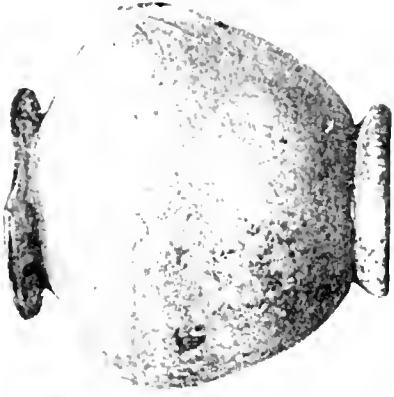
32.778



32.781



32.783



32.781



32.785

32.785



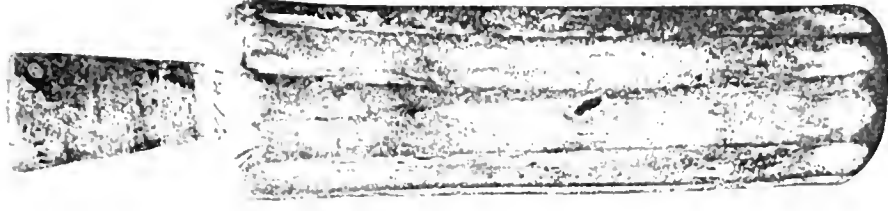
32.786



32.782



32.787



32.790



32.791



32.791



32.790



32.791



32.795



32.795



32.798





IN COMPLIANCE WITH CURRENT  
COPYRIGHT LAW  
OCKER & TRAPP INC.  
AND  
NYU-INSTITUTE OF FINE ARTS  
PRODUCED THIS REPLACEMENT VOLUME  
ON WEYERHAEUSER COUGAR OPAQUE NATURAL PAPER,  
THAT MEETS ANSI/NISO STANDARDS Z39.48-1997  
TO REPLACE THE IRREPARABLY  
DETERIORATED ORIGINAL. 2002







INSTITUTE OF FINE ARTS LIBRARY



3 1162 02860 4982

LIT