

ALLEN'S

Parlor Furnace



Catalog No. 3

A L L E N ' S

*The Complete Line of
Nationally Advertised*

Parlor Furnaces

for

*ANY FUEL ✓ ANY CLIMATE
ANY NEED!*

✓ ✓ ✓

Concentrate

*YOUR SALES EFFORT ✓ YOUR ADVERTISING
YOUR FLOOR SAMPLES ✓ YOUR BUYING POWER*

On This Particular Line

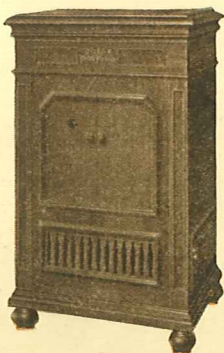
*and you will lower your advertising cost, increase turn-
over, and cut sales cost*



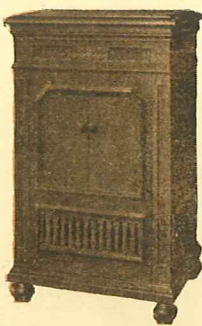
No. 616



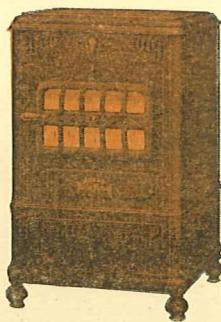
No. 921



No. 600



No. 500



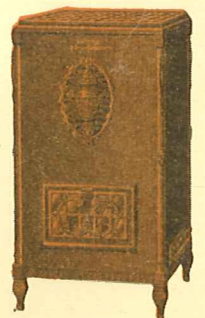
No. 920



No. 918

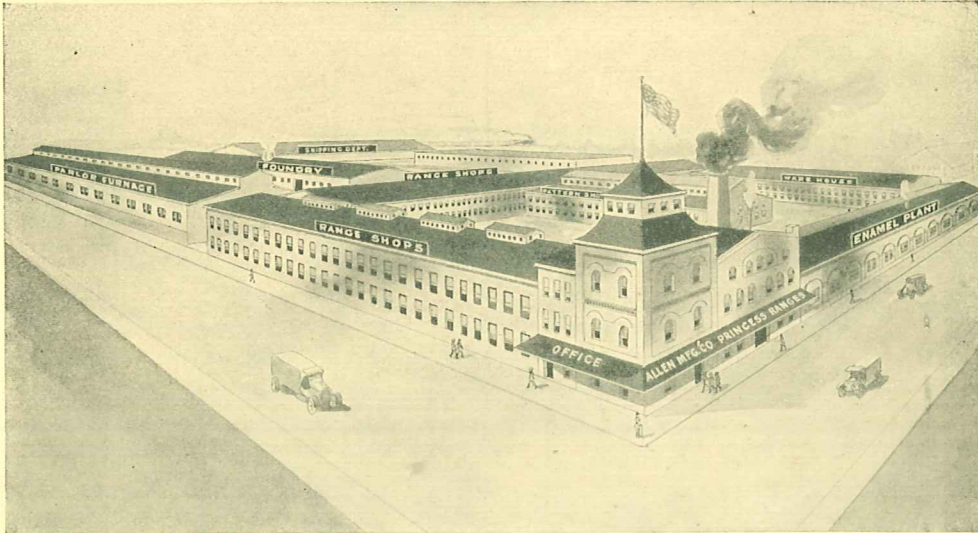


No. 916



No. 800

At Nashville---



This is the modern factory where Allen's Parlor Furnace is made. Sales have increased so fast that new foundry and porcelain enameling plants have been erected. Huge quantity production permits the use of highest quality materials and finest methods of construction. You can sell the Allen's with confidence that you are selling the best Parlor Furnace that can be made.

1 1 1

Allen Built the Original Parlor Furnace

M.F. ALLEN, founder of the Allen Manufacturing Company, began building stoves in 1867. For a quarter of a century the famous Allen's Princess Range was sole

production in this big plant. W.F. Allen, present general manager and president of the Company, and son of the founder, was the pioneer builder of the Parlor Furnace.

The Allen Manufacturing Co.

"Parlor Furnace Pioneers"

Nashville, Tenn.

1 1 1

Distributed from stock in following cities:

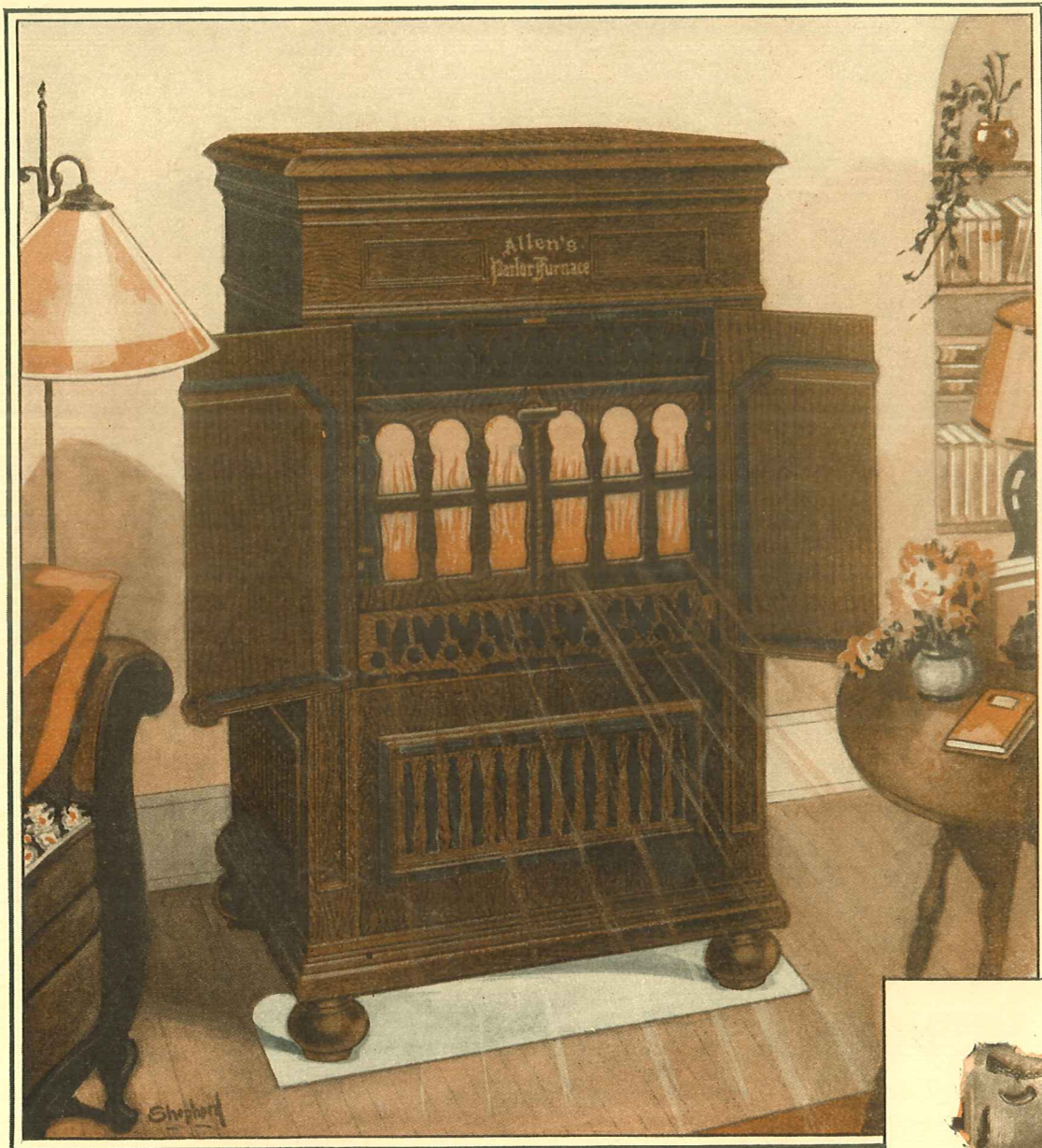
BOSTON
SYRACUSE
DES MOINES
DALLAS

HARRISBURG
MINNEAPOLIS
SPOKANE
ST. JOSEPH

MILWAUKEE
MISSOULA
PORTLAND
GRAND RAPIDS

SEATTLE
COLUMBUS
CHARLESTON
SAN FRANCISCO

The New Allen's

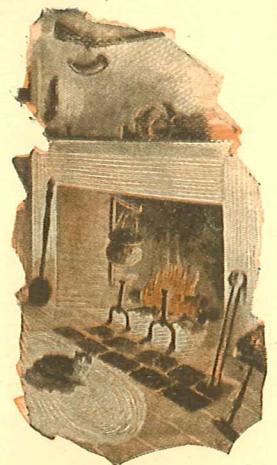


Showing Model 500 or 600 with doors open

Gives Oldtime Fireside Cheer

THERE IS A SPIRIT OF JOY and restfulness associated with the hearth that should not be denied the twentieth-century family circle.

ALLEN'S PARLOR FURNACE combines the ruddy glow and cheer of the open fireside with the efficiency of a modern heating system.



Parlor Furnace

IN THIS distinctively new and wonderfully improved model, ALLEN announces the greatest achievement in the designing and building of "Above-the-Floor" furnaces.

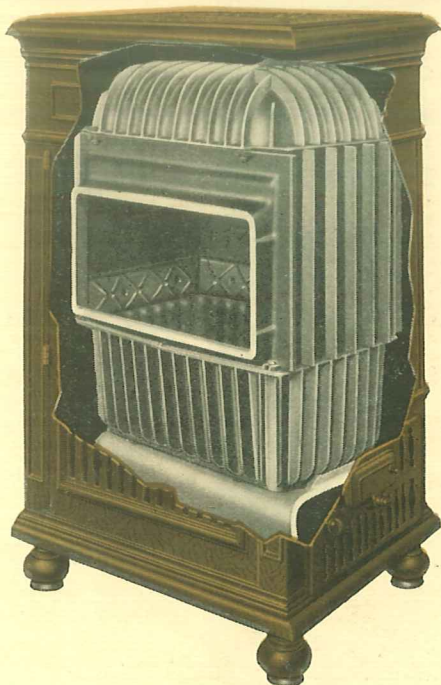
Made in Two Sizes

No. 500

No. 600



Showing Model 500 or 600 with doors closed



Note the fin construction of the inner heating unit. You get heat from hot surfaces. These heat radiating fins double heat surface.

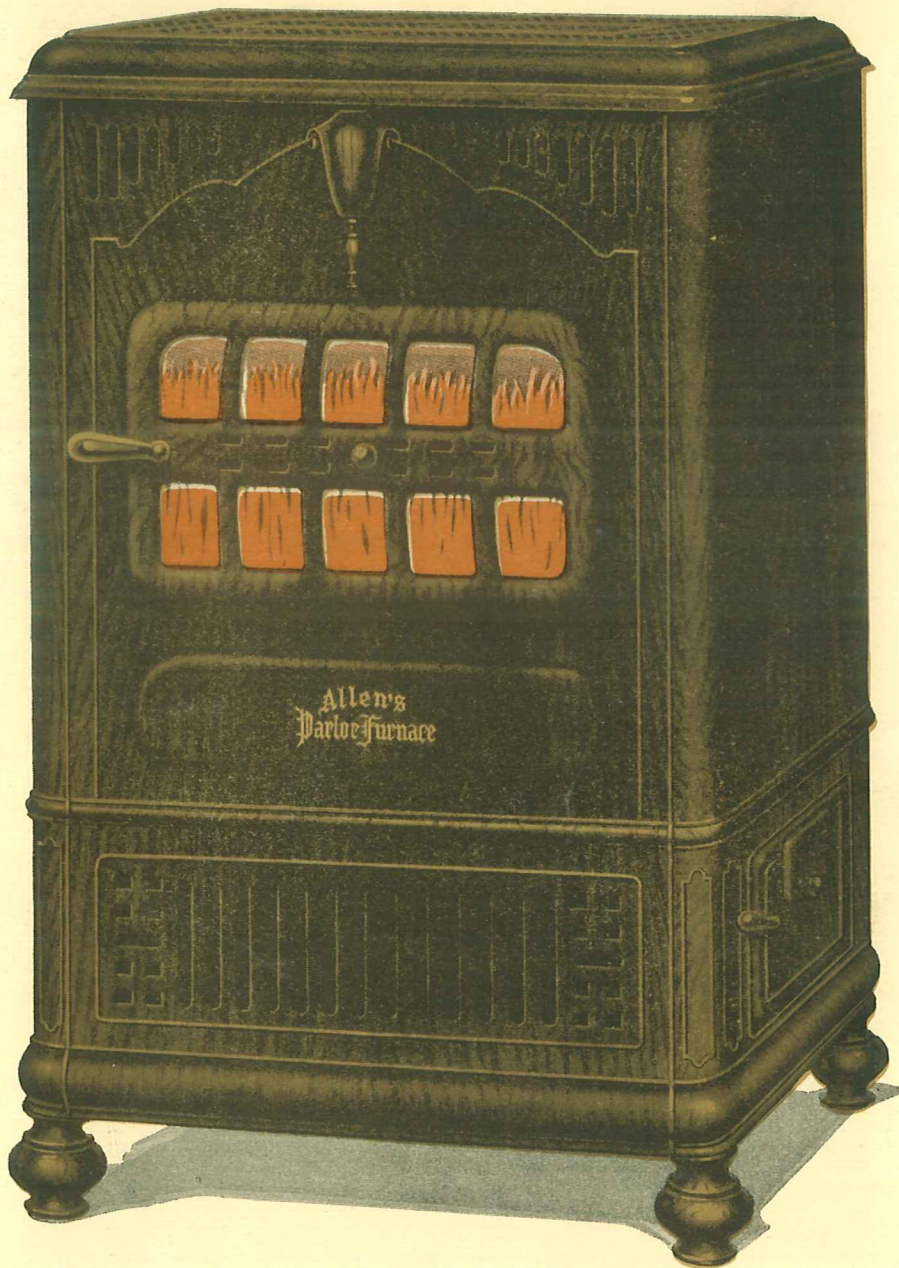
For any fuel—hard or soft coal, coke, wood, etc. Note oblong fire bowl and double feed doors.

Supplied only in Porcelain Enamel Walnut Finish.

Supplied with either Tri-Bar Revolving Grates or Duplex Rocker Grates.

	DIMENSIONS	WEIGHT	FIRE BOWL	PIPE COLLAR	DOORS	FLOOR SPACE	LIST
No. 600	Height, 47 in. Width, 28 in. Depth, 24½ in.	Crated, 557 lbs. Net, 499 lbs.	Dimensions, 21x14x10 Weight, 95 lbs. Duplex or Tri-Bar Grates	Size, 7 in. Reversible Cast Elbow Supplied	Feed, 18½x9 in. Ash, 12x6 in.	24x27 in.	\$
No. 500	Height, 45 in. Width, 28 in. Depth, 22 in.	Crated, 490 lbs. Net, 425 lbs.	Dimensions, 20x12x9 Weight, 72 lbs. Duplex or Bar Grates	Size, 7 in. Reversible Cast Elbow Supplied	Feed 18½x9 in. Ash, 10x6 in.	21½x27 in.	\$

Allen's Junior



Distinctive , Round Cornered , Classical , Attractive

DON'T confuse this with our Parlor Furnace Model 600. The No. 600 is still our leader and should be your leader. This new Circulator is a lower priced unit and also smaller size to supply a demand which exists among a certain class of buyers for lower priced system than the models 500 or 600. This new

Circulator will be supplied in three sizes as per specifications. Walnut finish only. The round corners give it an unusually distinctive appearance. Heat Radiating Fins—Fireside Cheer. The inner heating unit of the No. 920 size is of the same dimensions as the No. 500. Lower price is effected in economy of the outer cabinet.

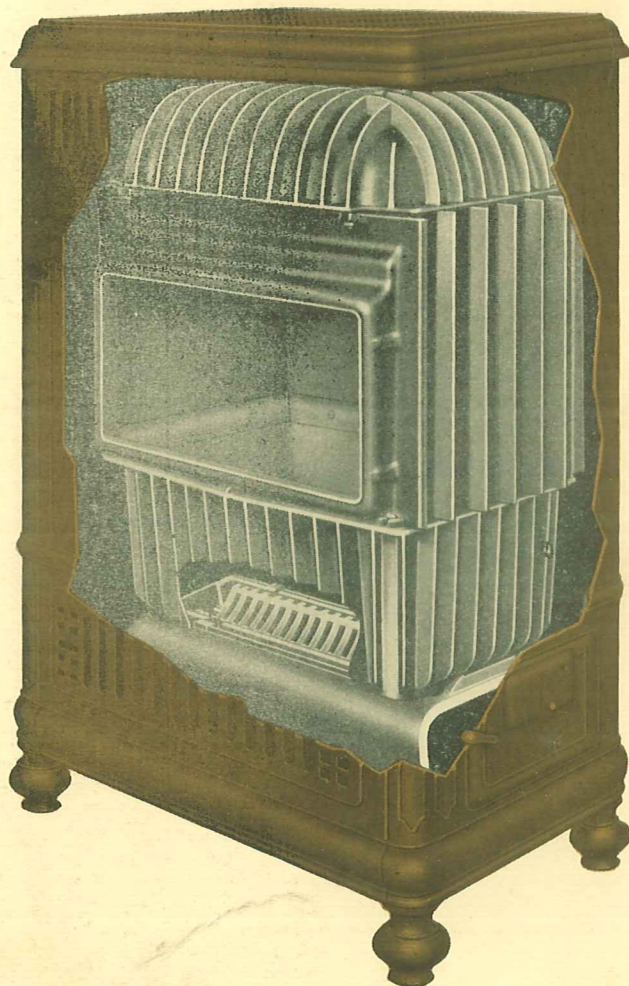
Parlor Furnace

Three Sizes
Walnut Finish Only



Duplex or Triangular Grates, as desired. Oblong Fire Bowl. Large Feed Doors.

Inner heating unit constructed with Heat Radiating Fins.



No.	DIMENSIONS	WEIGHT	FIRE BOWL	PIPE COLLAR	DOORS	FLOOR SPACE	LIST
920	Height, 44 Inches Width, 26 Inches Depth, 19 Inches	Net, 374 lbs. Crated, 422 lbs.	Weight, 72 lbs. Dimensions 20x12x9	Size, 7 Inches Reversible Cast Elbow	Feed, 17x9 Ash, 10x6	19x28	\$
918	Height, 42 Inches Width, 26 Inches Depth, 19 Inches	Net, 336 lbs. Crated, 378 lbs.	Weight, 60 lbs. Dimensions 18x12x9	Size, 7 Inches Reversible Cast Elbow	Feed, 15x9 Ash, 10x6	19x26	\$
916	Height, 40 Inches Width, 24 Inches Depth, 19 Inches	Net, 302 lbs. Crated, 342 lbs.	Weight, 45 lbs. Dimensions 16x12x9	Size, 7 Inches Reversible Cast Elbow	Feed, 13x8 Ash, 10x6	19x24	\$

Allen's Parlor



THIS IS THE COMPANION MODEL to the No. 600 as shown on page 4, but with round fire bowl and combustion chamber, instead of the oblong shape. Single feed door, flat draw-center grate, round fire pot, are features preferred by some of the trade, and for them this model has been designed.

NOT READY
UNTIL 1929

Furnace--Model 616

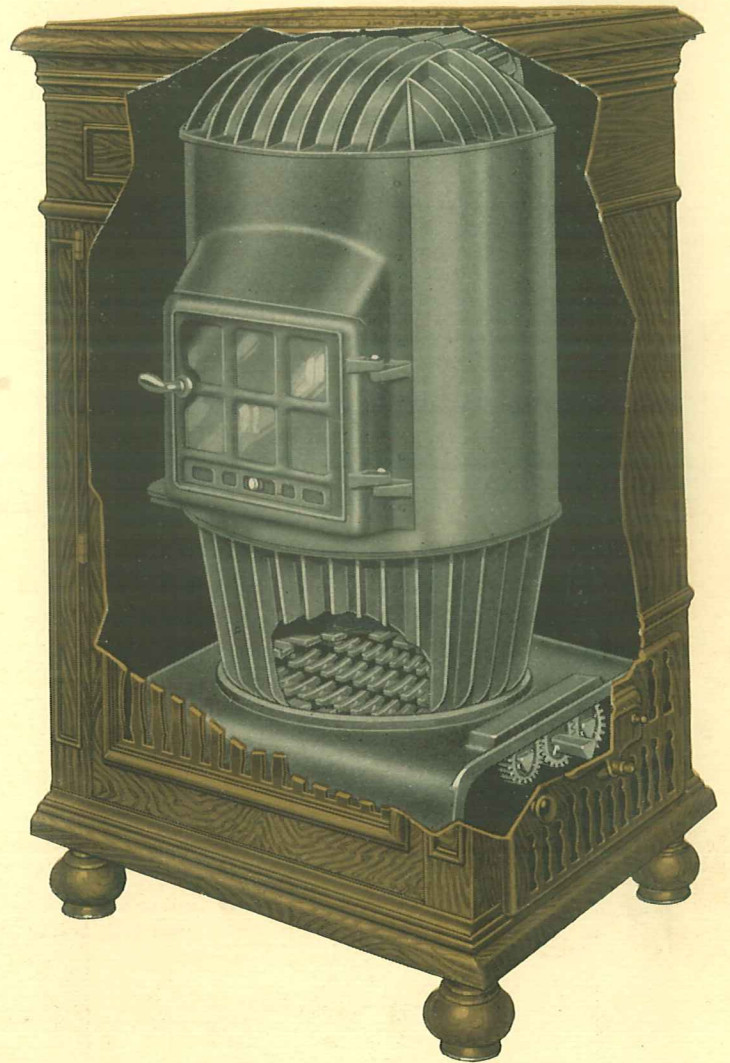
ONLY ONE SIZE.
Walnut finish only.



Flat, draw-center grate
or
Revolving triangular grates.



The exterior enamel cabinet
is of identical size, appearance
and construction as the model
600.



*Heat radiating fins on fire
bowl and combustion dome.*

No.	DIMENSIONS	WEIGHT	FIRE BOWL	PIPE COLLAR	DOORS	FLOOR SPACE	LIST
616	Height, 48 in. Width, 28 in. Depth, 24½ in.	Crated, 487 lbs. Net, 425 lbs.	Weight, 80 lbs. Dimensions 16½x10 in.	Size, 7 in. Reversible Cast Elbow	Feed, 10¼x11¼ in. Ash, 12x6 in.	24x27 in.	\$

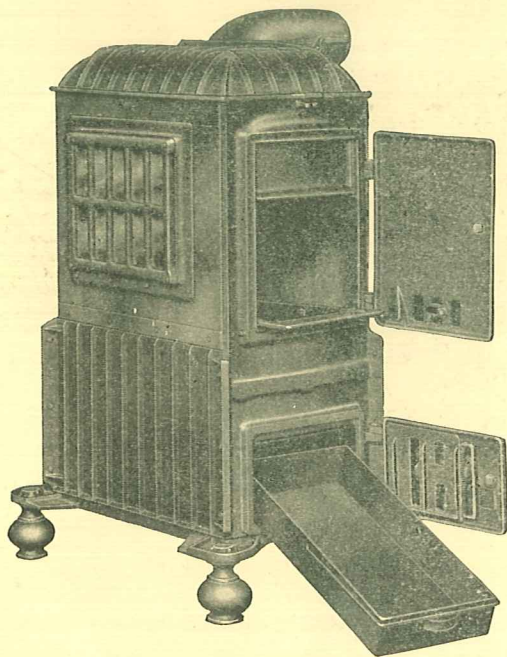
Allen's Wood Burning Parlor Furnace

Model 921

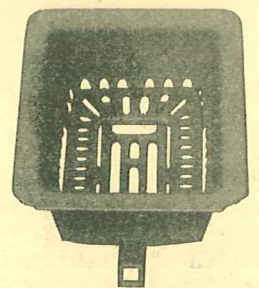
ALLEN'S Wood Burning Parlor Furnace is beautifully designed and finished in *walnut porcelain enamel* to harmonize with finest furnishings. Easily cleaned—just dust it with a cloth, same as any other piece of furniture. Feed door and ash pit door are placed on the side so as not to detract from the beauty of the front. Mica window in front to provide glow and cheer of firelight.



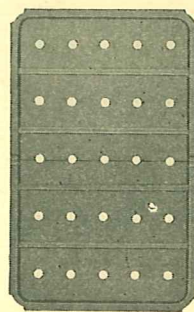
Fire chamber is assembled of grey cast iron with boiler plate iron above. Carefully fitted, bolted and cemented to provide an absolutely smoke and gas tight construction. Smoke curtain prevents smoke and gas escaping into room when door is open. Large ash pit and ash pan. Heat Radiating Fins at bottom and top greatly increase heating surfaces.



This grate is constructed for use when burning coal. It is fitted with draw center bottom grate, the central portion of which slides forward permitting the grate to be cleared of clinkers. The entire grate is easily inserted through the feed door—no bolts to fasten.



Basket Coal Grate



Wood Burning Grate

Made in two pieces. Easily lifted out or put into position through large feed door opening.

No.	DIMENSIONS	WEIGHT (Wood Grate)	WEIGHT (Coal Grate)	FIRE BOWL	PIPE COLLAR	DOORS	FLOOR SPACE	LIST
921	Height, 42 in. Width, 19 in. Length, 26 in.	Net, 303 lbs. Crated, 353 lbs.	Net, 322 lbs. Crated, 372 lbs.	Wood grate 13½x21 Coal grate 10x17½	Size, 7 in. Reversible Cast Elbow	Feed, 9x12 in. Ash, 9¼x5½	19x26	\$

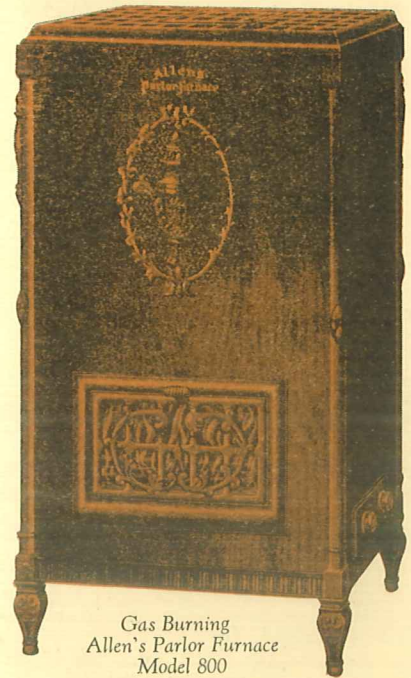
Allen's Parlor Furnace for Gas Only

Model 800

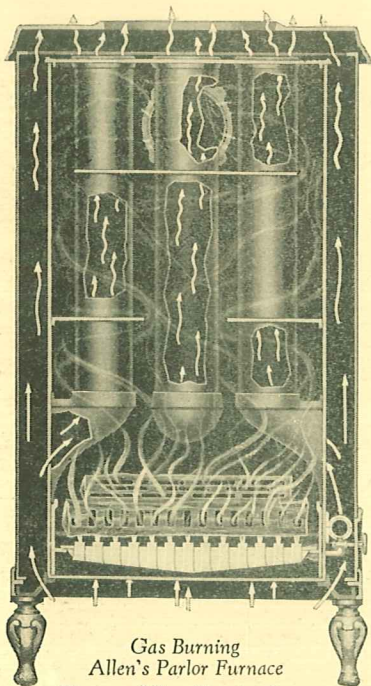
Porcelain Enamel Walnut Finish

SIX AIR DUCTS, four inches in diameter, extend through the combustion chamber. These are steel tubes of 20-gauge material and fastening on cast-iron boots at the bottom and to a cast-iron collar plate at the top. Through these tubes the primary warm air circulation is effected. The cast-iron boots forming the intake are immediately over the burners. Incandescent fuel balls contained in a grate suspended above the burners break up the flames, absorb moisture, baffle heat escape and form a glowing fire visible through the mica door, thus affording old-time "Fireside Cheer."

Three baffle plates deflect the escape of the heat, requiring it to take a zigzag course, circulating around the air duct tubes and thus extracting available heat units and reducing stack temperature.



Gas Burning
Allen's Parlor Furnace
Model 800
Specially constructed for
burning gas only



Gas Burning
Allen's Parlor Furnace
Phantom View Showing Inner
Construction of Heating Unit

While the hottest air and the primary circulation is through the air duct tubes, there is a secondary circulation around the four sides in the space between the inner combustion chamber and the outer ornamental casing. The white arrows show the heated air circulation. The wisps of combustion products show the heat around the tubes. **THERE ARE NO LEAKS, AND COMBUSTION GASES DO NOT MIX WITH THE HEATED AIR.**

Vent

A FOUR INCH FLUE COLLAR at the back is supplied for connection into chimney. This is a closed fuel heater, and the four-inch collar is the convenient size—usually obtainable from stock. This heater must be connected to a flue, and it is desirable to pipe off moisture fumes and gases. The closed heater is safest.

Gas Consumption

EACH BURNER—minimum capacity 30 feet per hour, maximum 60 feet.

No.	DIMENSIONS	WEIGHT	BURNERS	FLUE COLLAR	FLOOR SPACE	LIST
800	Height, 42 in. Width, 22 in. Depth, 17 in.	Crated, 250 lbs. Net, 215 lbs.	Two Burners 78 Ports each	Size, 4 in.	16½x21½ in.	\$

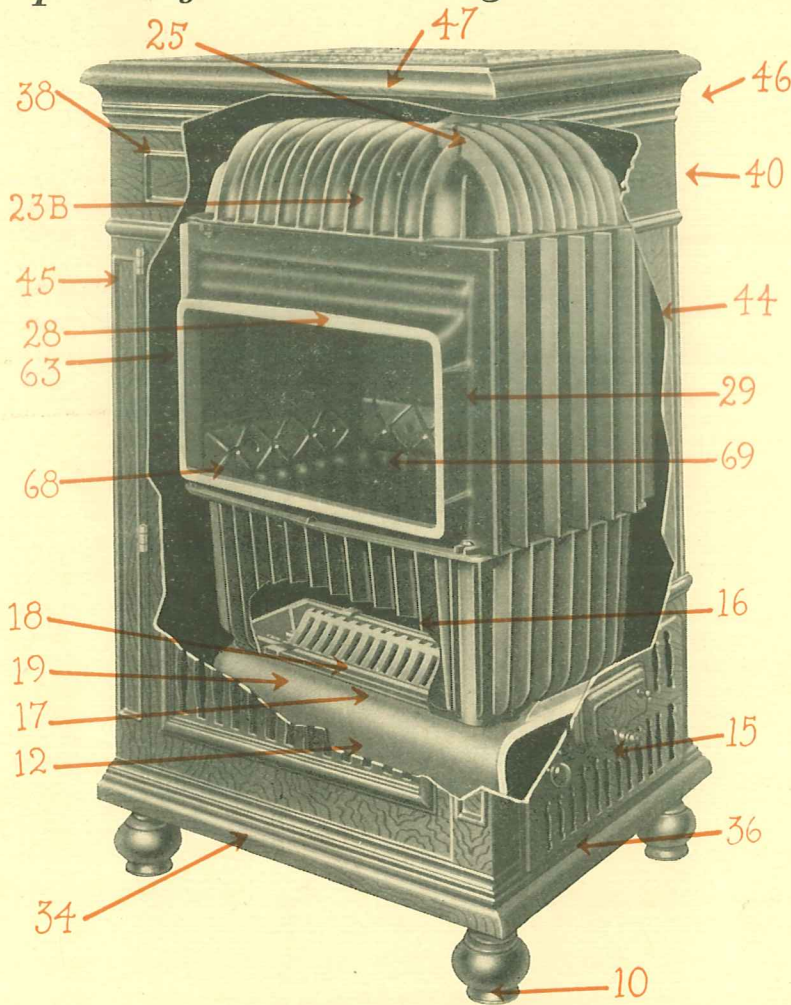
Repairs

When Furnace Needs Repairs or Replacements

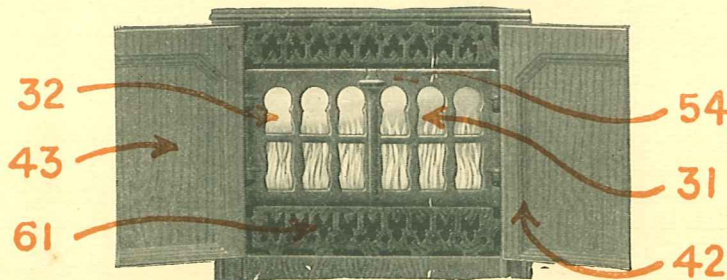
Always remove the outer casing as a whole. Whether repairing the interior of the furnace or the outer part, the exterior casing should first be removed as a whole.

Repairs for Models 500 and 600

- 10—Legs
- 11-A—Extreme Bottom
- 12—Ash Pit
- 13—Ash Pit Door
- 14—Ash Pit Door Hinge
- 15—Ash Pit Door Cover
- 16—Fire Pot
- 17—Side Bars, Duplex Grate
- 18—Duplex Grate Long Shank
- 19—Duplex Grate Short Shank
- 23-B—Inside Main Top
- 24—Lower Half Pipe Collar
- 25—Upper Half Pipe Collar
- 26—Closed Half Cast Elbow
- 27—Open Half Cast Elbow
- 28—Fire Door Frame
- 29—Right Fire Door Hinge
- 30—Mica Frame
- 31—Right Fire Door
- 32—Left Fire Door
- 34—Lower Front Sec. Outer Casing
- 35—Lower Back Sec. Outer Casing
- 36—Lower Right Sec. Outer Casing
- 37—Lower Left Sec. Outer Casing
- 38—Upper Front Sec. Outer Casing
- 39—Upper Back Sec. Outer Casing
- 40—Upper Right Sec. Outer Casing
- 41—Upper Left Sec. Outer Casing



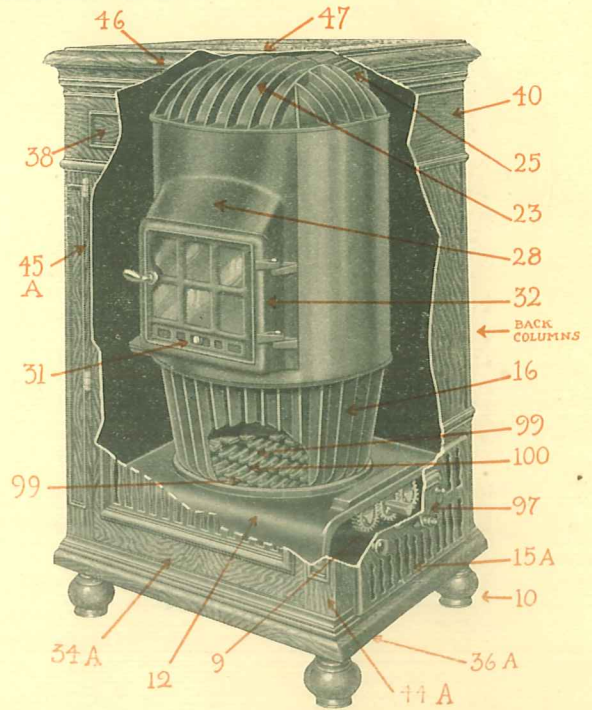
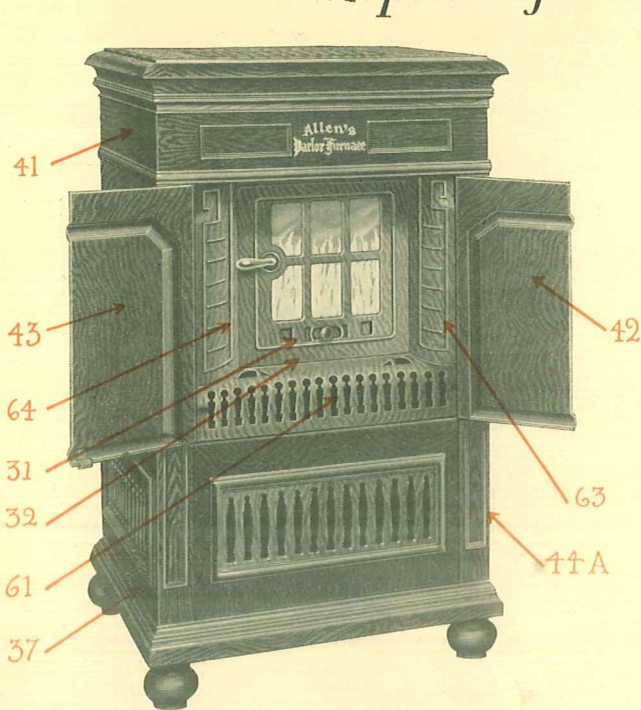
- 42—Right Outer Door
- 43—Left Outer Door
- 44—Right Column
- 45—Left Column
- 46—Main Grill Top Outer Casing
- 47—Center Grill Top Outer Casing
- 48—Water Pan
- 52—Smoke Curtain, Right
- 53—Smoke Curtain, Left
- 54—Grill Above Fire Door
- 55—Front Duplex Grate Hanger (also Front Bar Grate Hanger for No. 500).
- 56—Back Duplex Grate Hanger
- 57—Bar Grate Cogs
- 58—Long Shank Bar Grate
- 59—Short Shank Bar Grate
- 60—Cast Elbow Damper Slide
- 61—Grill Below Fire Door
- 62—Corner Braces
- 63—Left Fire Door Hinge
- 65—Back Bar Grate Hanger
- 67—Duplex Grate Cogs
- 68—End Linings Over Fire Pot
- 69—Back Linings Over Fire Pot
- 75—Front Bar Grate Hanger (No. 600)
- 97—Draft Door
- Grate Washer (No Number)



NOTE: Some parts are not shown on chart—but the above numbers are on the castings—and in replacing broken parts—the number may be found on it—then refer to this list for correct name in ordering.

IN ORDERING GIVE SERIAL LETTER. EXAMPLE, MODEL 600-B, 600-CD, ETC.

Repairs for Model 616

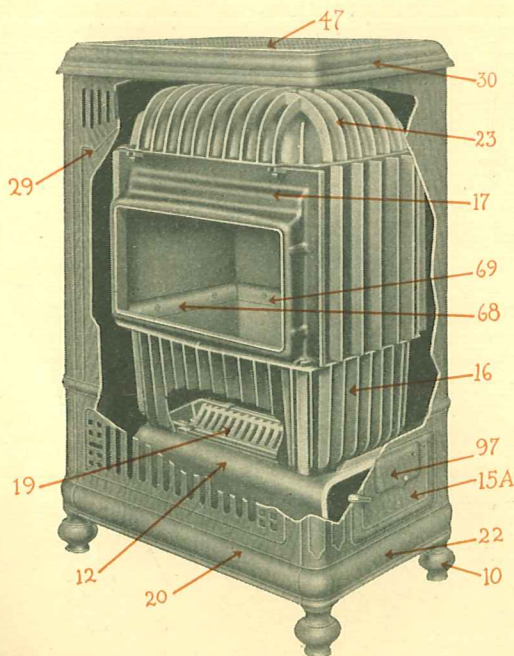


- 9—Cogs for Bar Grates
- 10—Legs
- 11—Extreme Bottom
- 12—Ash Pit
- 13-A—Ash Pit Door
- 14-A—Ash Pit Door Hinge
- 15-A—Ash Pit Door Cover
- 16—Fire Pot
- 23—Inside Main Top
- 25—Upper Half Pipe Collar
- 26—Lower Half Cast Elbow
- 27—Upper Half Cast Elbow
- 28—Fire Door Frame

- 30—Mica Frame
- 31—Feed Door Slide
- 32—Inside Feed Door
- 34-A—Lower Front Veil Section
- 35—Lower Back Veil Section
- 36-A—Right Lower Veil Section
- 37—Left Lower Veil Section
- 38—Upper Front Veil Section
- 39-A—Upper Back Veil Section
- 40—Upper Right Side Veil Section
- 41—Upper Left Side Veil Section
- 42—Right Outside Cabinet Door

- 43—Left Outside Cabinet Door
- 44-A—Right Front Column
- 45-A—Left Front Column
- 46—Main Top Grill
- 47—Water Pan Grill
- 48—Water Pan
- 50—Smoke Curtain
- 58—Front Bar Grate Hanger
- 59—Back Bar Grate Hanger
- 60—Cast Elbow Damper
- 61—Narrow Grill below Feed Door
- 62—Corner Braces

- 63—Right Inside Feed Door Grill
- 64—Left Inside Feed Door Grill
- 65—Upper Collar Damper
- 66—Upper Collar Damper Handle
- 97—Draft Door
- 99—Short Shank Bar Grates
- 100—Long Shank Bar Grates
- Outside Cabinet Door Knobs
- Inside Feed Door Handle and Latch
- Ash Door Handle and Latch
- Small Back Columns

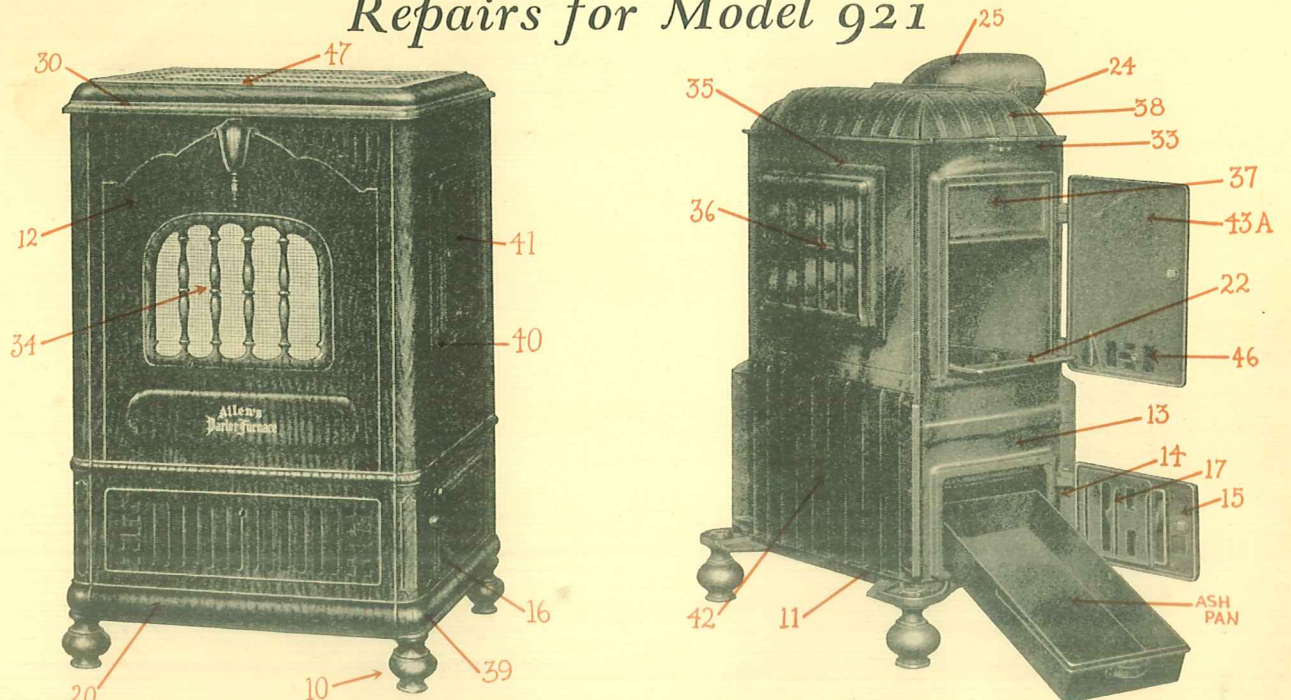


Repairs for Models 916-918-920

- 10—Legs
- 11—Extreme Bottom
- 12—Ash Pit
- 13—Ash Pit Door
- 14—Ash Pit Door Hinge
- 15-A—Ash Pit Door Cover
- 16—Fire Pot
- 17—Fire Door Frame
- 18—Duplex Grate Long Shank
- 19—Duplex Grate Short Shank
- 20—Lower Front Veil
- 21—Lower Back Veil
- 22—Lower Right Veil
- 23—Inside Main Top
- 24—Lower Half Pipe Collar
- 25—Upper Half Pipe Collar
- 26—Lower Half Cast Elbow
- 27—Upper Half Cast Elbow
- 28—Lower Left Veil
- 29—Upper Front Veil
- 30—Main Top Grill

- 31—Feed Door
- 35—Feed Door Cover
- 47—Water Pan Grill
- 48—Water Pan
- 52—Smoke Curtain, Right
- 53—Smoke Curtain, Left
- 55—Front Bar Grate Hanger, also Front Duplex Grate Hanger
- 56—Back Duplex Grate Hanger
- 58—Long Bar Grates
- 59—Short Bar Grates
- 65—Back Bar Grate Hanger
- 67—Cogs for Duplex Grates
- 68—Right End Lining, Fire Pot, also Left End Lining, Fire Pot
- 69—Right Back Lining over Fire Pot, also Left Back Lining over Fire Pot.
- 97—Draft Door
- Handle and Latch for Ash Door
- Fire Door Register Slide
- Fire Door Register Slide Knob

Repairs for Model 921



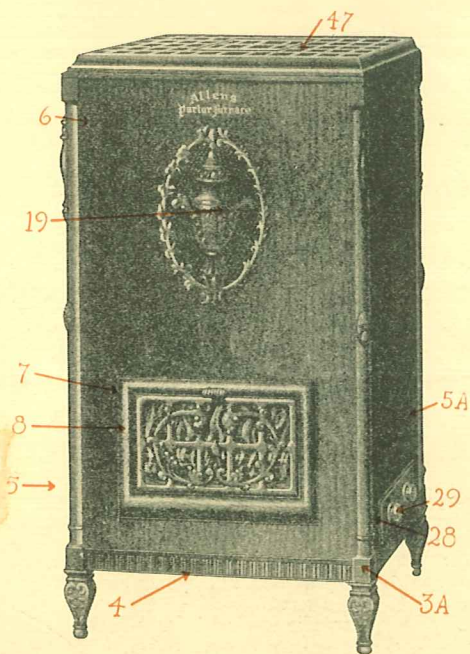
- 10—Legs
- 11—Bottom
- 12—Upper Front
- 13—Ash Door Frame
- 14—Ash Door Hinge
- 15—Ash Door
- 16—Ash Door Cover
- 17—Ash Door Slide
- 18—Ash Door Slide Lever
- 19—Wood Grate

- 20—Lower Front Veil
- 21—Lower Back Veil
- 22—Fire Door Apron
- 24—Lower Half Pipe Collar
- 25—Upper Half Pipe Collar
- 26—Lower Half Cast Elbow
- 27—Upper Half Cast Elbow
- 28—Lower Left End Veil
- 29—Coal Fire Pot
- 30—Main Grill Top

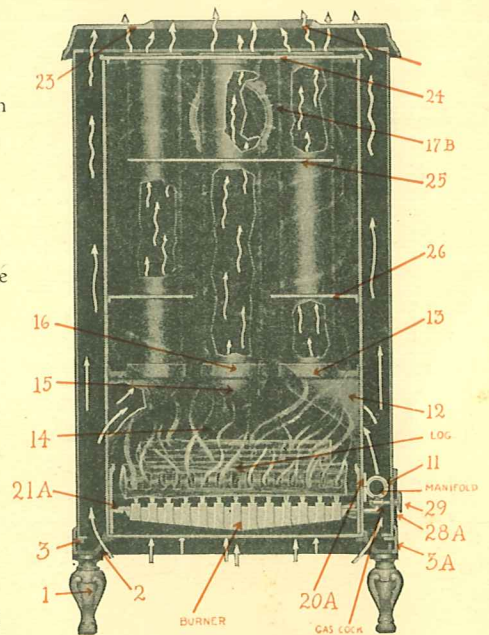
- 31—Coal Fire Pot Draw Grate
- 33—Fire Door Frame
- 34—Upper Front Door
- 35—Front Mica Frame
- 36—Front Mica Frame Lining
- 37—Smoke Curtain
- 38—Inside Top
- 39—Lower Right End Veil
- 40—End Cabinet Door Frame
- 41—End Cabinet Door

- 42—Front and Back Wood Fire Pot
- 43-A—Fire Door
- 44—Left End
- 45—Coal Fire Pot Main Grate
- 46—Fire Door Slide
- 47—Water Pan Grill
- 48—Water Pan
- Fire Door Apron Cleat
- Coal Fire Pot Draw-Grate Washer

Repairs for Model 800



- 1—Legs
- 2—Leg Bracket
- 3—Left Short Base Strip
- 3-A—Right Short Base Strip
- 4—Long Base Strip
- 5—Lower Section Column
- 5-A—Right Back Lower Column
- 6—Upper Section Column
- 7—Front Door Frame
- 8—Mica Door
- 9—Mica Door Lining
- 11—Manifold Bracket in two parts
- 12—Right and Left Cast Flue
- 13—Right and Left Cast Flue Cover
- 14—Back Cast Flue
- 15—Back Cast Flue Extension
- 16—Back Cast Flue Cover
- 17-B—Flue Collar
- 19—Front Ornament
- 20-A—Right End Lining
- 21-A—Left End Lining
- 22—Top Column Bracket
- 23—Main Top Grill
- 24—Inside Top (6 holes)
- 25—Center Baffle Plate
- 26—End Baffle Plate
- 28—End Door
- 29—Gas Cock Wheel
- 30—Middle Cast Log Support
- 47—Water Pan Grill
- 48—Water Pan



Here's How ALLEN Helps Dealers to Make Sales and Profits

Local Newspaper Advertising

ALLEN SUPPLIES the cuts and copy and pays half the cost of a local newspaper advertising campaign. Dealers who know tell us that this co-operative plan is exceedingly generous, even if we were not such extensive national advertisers.



Direct-by-Mail Campaign

LETTERS WRITTEN over dealer's signature and typed on 4-color, lithographed illustrated letterheads, imprinted with dealer's name and address, will be mailed at stated intervals to list of prospects. Allen furnishes the letterheads, attractive enclosure folders and does all the work incident to mailing. Dealer's cost, postage only.



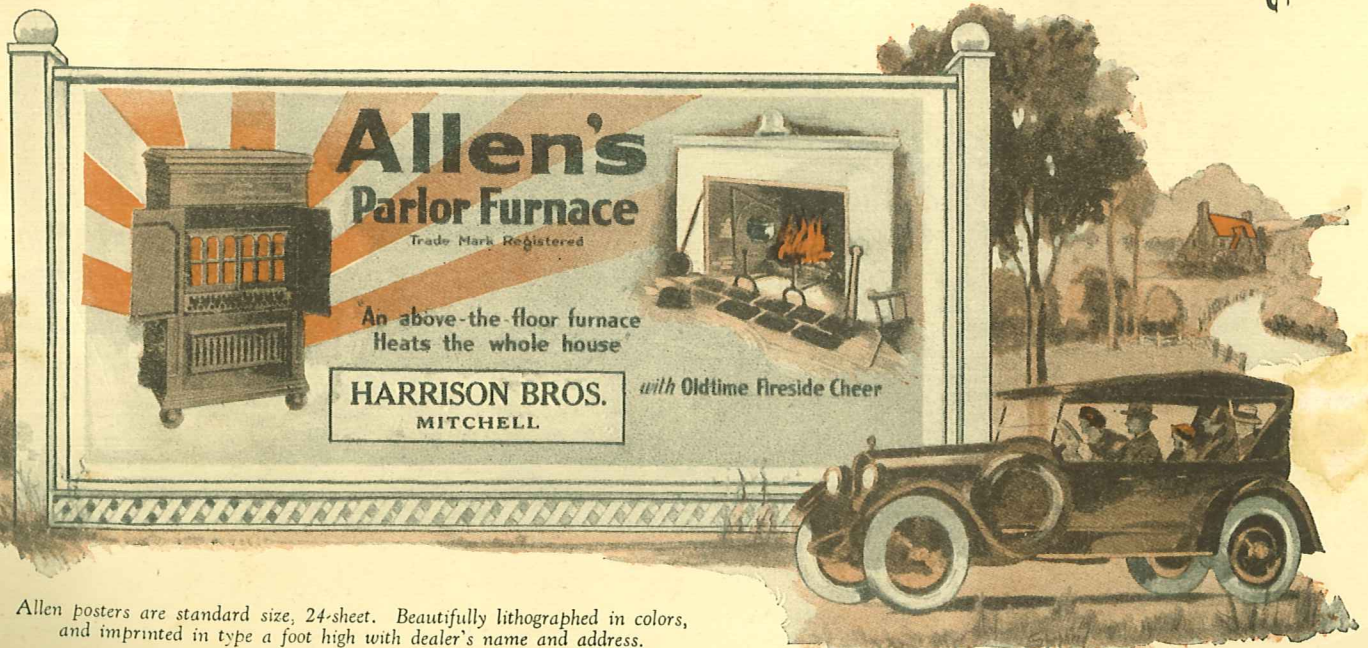
The local newspaper is one of your best mediums for keeping your name as Allen distributor before the people in your territory.

Signs and Posters

SIGNS ARE GUIDEPOSTS to your store. Allen supplies signs of every description—agency signs, road signs, truck signs, installation signs, store posters, billboard posters, cloth banners. These are distributed either free or on a co-operative basis whereby the factory pays part of the cost. Road and installation signs and cloth banners are imprinted with dealer's name. POSTERS—the factory supplies the posters and pays half the cost of a poster campaign.



This attractive sign will readily identify your store as the Allen agency.



Allen posters are standard size, 24-sheet. Beautifully lithographed in colors, and imprinted in type a foot high with dealer's name and address.

Everywhere *✓✓✓* Dealers Succeed With the ALLEN

Proof—

Portsmouth, Va.
We have been selling the ALLEN for three years, and during that time have installed 107 furnaces. We are delighted with this business, and know of no other single item that is as profitable to handle. We have also found that the ALLEN brings in business along other lines and has materially increased profits.
THE HAWKS-MAUPIN CO.

Port Huron, Mich.
I have been selling ALLEN Parlor Furnaces for the last four years, and have installed about 150. I believe they are the best parlor furnaces made. They certainly are giving satisfaction to users, for we get favorable comments from customers almost every day.
CHAS. A. STURMER.

River Falls, Wis.
We have sold about 20 ALLEN'S Parlor Furnaces. They have been very satisfactory—both as to pleased customers and as to profit for us. Consequently a business builder.
A. W. LUND.

Silva, N. D.
We certainly think the ALLEN is the best parlor furnace on the market, and we intend to handle no other. It's a line on which the dealer can make money.
GUNNERUD BROS.

Lamar, Colo.
We have been selling ALLEN'S for two years, and have installed 30 to 35. It is the best parlor furnace on the market. We know everybody is well pleased and have known a sale of an ALLEN'S to sell two or three more from the results that it gave.
D. H. NEVINS HDWE. CO.

Fall River, Mass.
I have been selling the ALLEN Furnace for about three years, and in that time sold from 200 to 250. Every one I sold so far has been very satisfactory.
THE YELLOW FRONT FURNITURE STORE.

Wenatchee, Wash.
During the 1927-28 season we sold 27 ALLEN Parlor Furnaces. We consider the ALLEN a very creditable business builder and profit maker.
KAUFMAN-LEONARD CO.

Butte, Mont.
I have been selling ALLEN'S Parlor Furnace about five years, and have installed 200. The ALLEN is both a business builder and profit maker.
GEORGE R. OECHSLI.

(The above are just a few from the thousands in our files.)

THROUGHOUT the country Dealers have enjoyed unusual success in the sale of Allen's Parlor Furnace.

Now—with Allen's dominating national advertising campaign bringing Allen's patented Oldtime Fireside Cheer and exclusive Heat Radiating Construction to the attention of more than 50,000,000 readers—opportunities for increased sales and profits are better than ever.

If you are interested in securing the bigger share of the above-the-floor furnace business in your territory, write or wire for details of our attractive proposition.

ALLEN MANUFACTURING COMPANY

Stove Specialists for a Quarter Century

NASHVILLE, TENNESSEE

Large warehouse stocks carried in the following centrally located distributing points:

Boston, Syracuse, Des Moines, Dallas, Harrisburg, Minneapolis, Spokane, St. Joseph, Milwaukee, Missoula, Portland, Grand Rapids, Seattle, Columbus, San Francisco.



Allen's distinctive "Oldtime Fireside Cheer" is covered by Patent Nos. 16,677 and 69,731. Trade-Mark No. 202,578.

ALLEN'S

Parlor Furnace