

The

WORLD-RENOWNED

IMPROVED



Howe
Ventilating
Stoves

MANUFACTURED BY

The Cortland Howe Ventilating Stove Co.,

CORTLAND, N. Y., U. S. A.



Digitized by

The Association for Preservation Technology International

For the

Building Technology Heritage Library

<http://archive.org/details/buildingtechnologyheritagelibrary>

—1892—

—1893—

ILLUSTRATED AND DESCRIPTIVE

Catalogue and Price List

... OF THE IMPROVED ...

Howe Ventilating Stoves.

ORIGINAL AND ONLY GENUINE VENTILATING STOVES.

MANUFACTURED BY

The Cortland Howe Ventilating Stove Co.,

CORTLAND, N. Y., U. S. A.

OFFICE AND WORKS, ELM AND FRANKLIN STREETS.

[SEE NEXT PAGE FOR LIST OF AGENTS.]

Western Agents:

D. S. COOK, 57 Lake St , Chicago, Ill.
For Illinois, Wisconsin, Minnesota, Nebraska and the Dakotas

BAXTER STOVE CO., Mansfield, Ohio.
For Ohio, Indiana and Michigan.



THE WOODWARD & SCHERRER HARDWARE CO., Denver, Colo.
For Colorado.

THE E. C. COFFIN HARDWARE CO., Salt Lake City, Utah.

MILES STREVELL & ULMER, Ogden, Utah.
For Utah.

To the Trade.

THE Improved Howe Ventilating Stoves, as the great Sanitary Heaters of the age, have won a reputation never equaled before by any other stove, and in presenting to the trade our Catalogue for the season of 1892-3 we do so with no small degree of satisfaction, in view of the marked degree of perfection to which we have brought these stoves, both as to elegance in design and finish and their practical working qualities, as shown and described in the following pages. While the Improved Howe Ventilator is, and will continue to be, *our specialty* and leader, it affords us pleasure to call your attention to the new and elegant stoves which have been added to our line for the purpose of putting ourselves in a position to furnish our customers with *everything* in the line of heaters that their trade can possibly demand, from the cheapest up to the best and *acknowledged leader* of all stoves made. It is with grateful appreciation that we acknowledge the liberal support which has been given us by the trade, and in return we pledge our hearty co-operation and best endeavors in all that can advance the interests and profits of those who extend to us their patronage. We can assure you that we allow no season to pass in which we do not make some advancement in the art of manufacturing stoves, and that we have goods of a quality, and at prices, which cannot fail to interest every dealer in stoves. We shall hope to be favored with your correspondence and your orders, both of which will receive the most careful and prompt attention, and be fully appreciated by,

Yours very truly,

THE CORTLAND HOWE VENTILATING STOVE CO,

HON. WM. H. CLARK Prest.
F. W. COLLINS, Sec'y and Treas.
A. A. SPRAGUE, Supt.

TERMS.

ALL bills payable at our office, with current funds on New York.

Special discount for prompt payments, 30 days from date of invoice, 10 per cent.

All accounts not discounted at the end of 30 days must be settled by note payable four months from date of invoice without interest.

All claims for errors or shortages must be made within five days after receipt of goods.

Upon delivery of goods to Transportation Companies our responsibility ceases. In case of damage, overcharge or delay in transit, the purchaser must look to the Transportation Companies for redress.

No orders subject to any terms or conditions not distinctly named in them, and so acknowledged by the Company.

Positively no goods on consignment.

What the Howe Ventilating Stove Is.

WHY YOU SHOULD BUY IT.

1. THE HOWE VENTILATOR is the only stove that brings a large and constant stream of fresh air into a house, warming this air by passing it through and over portions of the stove which never become red hot, thus preserving all the oxygen or life-giving element.
2. THE HOWE VENTILATOR is the only stove that takes a large and constant stream of foul and cold air off of the floors and out through the chimney.
3. THE HOWE VENTILATOR is the only stove that equalizes the temperature in a large room so that by actual tests a variation of only from 2 to 5 degrees is shown in thermometers hung at the floor and ceiling. The variation when any other stove than the Howe Ventilator is used is from 30 to 45 degrees.
4. THE HOWE VENTILATOR is the only stove that creates no drafts of cold air from doors and windows, but absolutely prevents them. It insures against cold feet, aching heads and ill health resulting from uneven distribution of heat.
5. THE HOWE VENTILATOR is the only perfect re-circulating stove in the market, and unlike all other so-called "re-circulating" or "ventilating" stoves, it re-circulates pure air only. Re-circulated foul air is more dangerous to health than air warmed simply by radiation.
6. THE HOWE VENTILATOR is the only stove that will warm evenly, and at the same time rooms on the first and second floors of a house, or will warm evenly several connecting rooms on the same floor.
7. THE HOWE VENTILATOR is the only stove that can heat a given number of cubic feet of air either in a single room or connecting rooms on first or second floors at a saving of from 30 to 50 per cent. in fuel over any and all other stoves, and at a still greater saving over steam or furnace.
8. THE HOWE VENTILATOR is the only stove that will give you a summer atmosphere in your home in mid-winter, and the warmth from which is never oppressive but always delightful.
9. THE HOWE VENTILATOR is the first and only practical and successful ventilating stove, and the only one constructed on scientific principles and endorsed by the highest scientific authorities.
10. THE HOWE VENTILATOR is so easily controlled that the drafts can be set in the morning and not touched again for the entire day.
11. THE HOWE VENTILATOR is thoroughly built and highly artistic in appearance.
12. THE HOWE VENTILATOR is sold at prices which place it within the reach of every one who is able to buy any *so-called first-class* stove.

Read the testimonials of scientific and practical men to the merits of the Howe Ventilator, and don't be deceived by manufacturers who claim they have something "just as good as the Howe."

IMPROVED HOWE VENTILATOR.

FOR HARD COAL.

A Series---Three Sizes.

This stove in its present form is more elaborate in ornamentation and more harmonious in design than any stove which we have ever turned out before.

The marked improvements in construction are as follows: Capacity as Double Heater largely increased. Connection made direct from back of nickel section. No separate collar needed. Mounted with either the flat draw-center or our improved Spherical Center grates. ALL grates run on our improved Ball-Bearing grate rests. All grates interchangeable. Balls on which the grates run are incased, rendering it impossible for them to be gotten out of place. Our improved Spherical Center grates are now made with forged wrought iron shanks and improved stops. Magazine capacity materially enlarged.

Every size with tea-kettle attachment.

All sizes double heaters without extra trouble or expense.

Inside cover to magazine raises when swing cover is thrown around.

The most powerful double heater made, conveying only pure air, highly heated, to the rooms above.

Full nickel, with art tile and jewel ornaments.

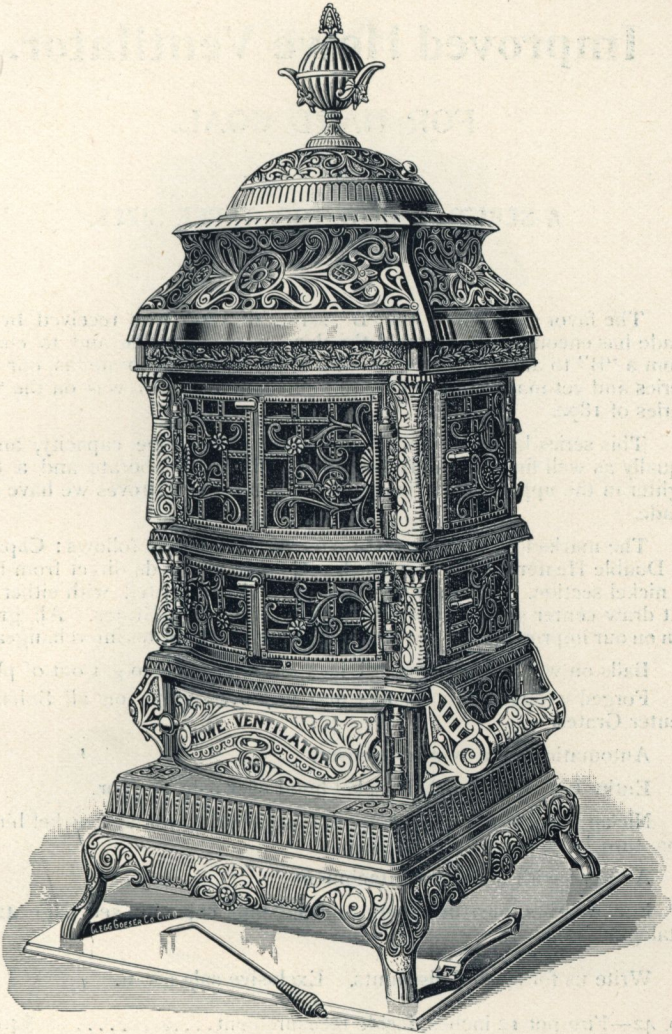
Entire top section nickel, nickel corner columns.

Nickel hood over ash-pit door, nickel rails and brackets, full nickel skirt and legs, nickel turnkeys, hinge-pins, knobs, etc.

For weights, measurements and heating capacity see catalogue, page 42.

Write us for special discounts. Exclusive sale given.

No. 32—Fire-pot 12 inches, inside measurement.....	\$44 00
No. 34—Fire-pot 14 inches, inside measurement.....	49 50
No. 36—Fire-pot 16 inches, inside measurement.....	54 50



THE IMPROVED HOWE VENTILATOR.

A SERIES.

Improved Howe Ventilator.

FOR HARD COAL.

A SERIES. SQUARE TOP, THREE SIZES.

The favor with which the "B" series of 1890 was received by the trade has encouraged us to add the third or smaller size and to change from a "B" to an "A" series, making it nearly as elaborate as our first series and yet maintaining the price substantially as it was on the "B" series of 1890.

This series has the same size fire-pots, the same capacity, and is equally as well finished, and although a trifle less elaborate and a little lighter in the upper section, is one of the handsomest stoves we have ever made.

The marked improvements in construction are as follows: Capacity as Double Heater largely increased. Connection made direct from back of nickel section. No separate collar needed. Mounted with either the flat draw-center or our improved Spherical Center Grates. All grates run on our improved Ball-Bearing grate rests. All grates interchangeable.

Balls on which grates rest all incased, impossible to get out of place.

Forged wrought iron shanks and improved stops on all Spherical Center Grates.

Automatic inside magazine cover.

Entire top section nickel nickel hood over ash-pit door.

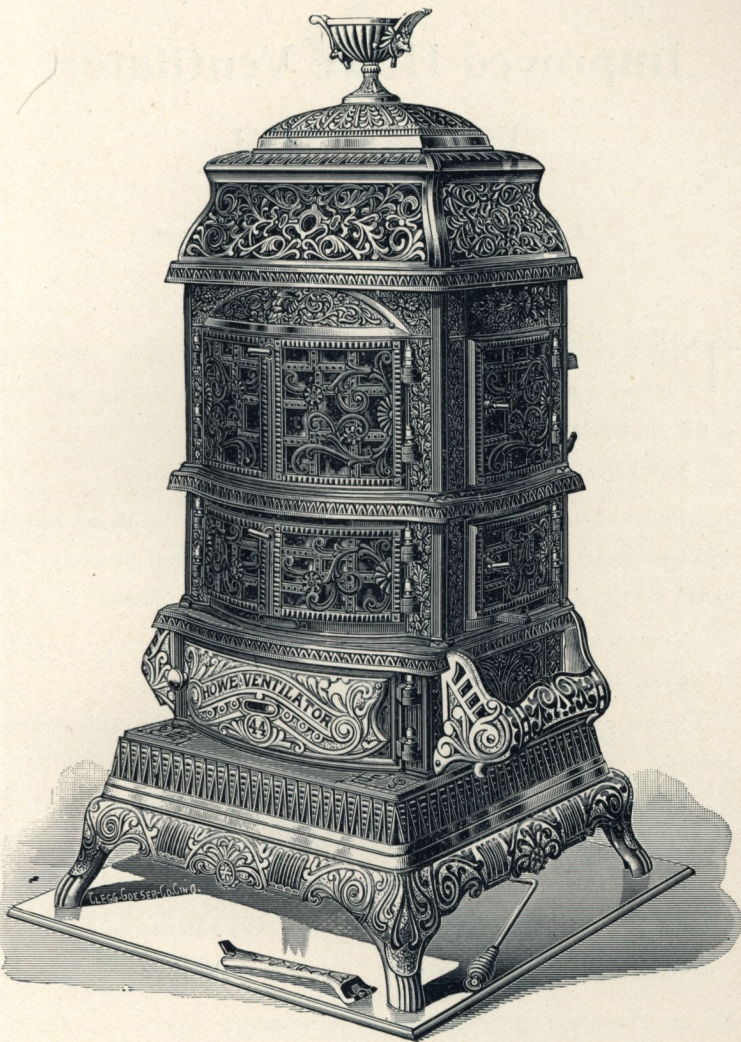
Nickel foot-rails and brackets, full nickel skirt and legs, nickel hinge-pins, turn keys, knobs, etc.

All sizes with tea-kettle attachment.

For weights, measurements and heating capacity see page 42 in catalogue.

Write us for special discounts. Exclusive sale given.

No. 42—Fire-pot 12 inches, inside measurement.....	\$40 00
No. 44—Fire-pot 14 inches, inside measurement.....	45 00
No. 46—Fire-pot 16 inches, inside measurement.....	50 00



THE IMPROVED HOWE VENTILATOR.
A SERIES, SQUARE TOP.

Improved Howe Ventilator.

FOR HARD COAL.

A Series, Pattern 1890.—Three Sizes.

THIS is one of the most elaborately ornamented, and the most harmonious and artistic in design, of any stove in the market, and is still so popular that we continue to manufacture it.

Full nickel, with art tile and jewel ornaments.

Full nickel dome section, nickel corner ornaments, nickel corner columns, nickel hood over ash-pit door, nickel rails and brackets, full nickel skirt and legs, nickel turn-keys, hinge-pins and knobs.

Every size with tea-kettle attachment.

Every size with double heater attachment.

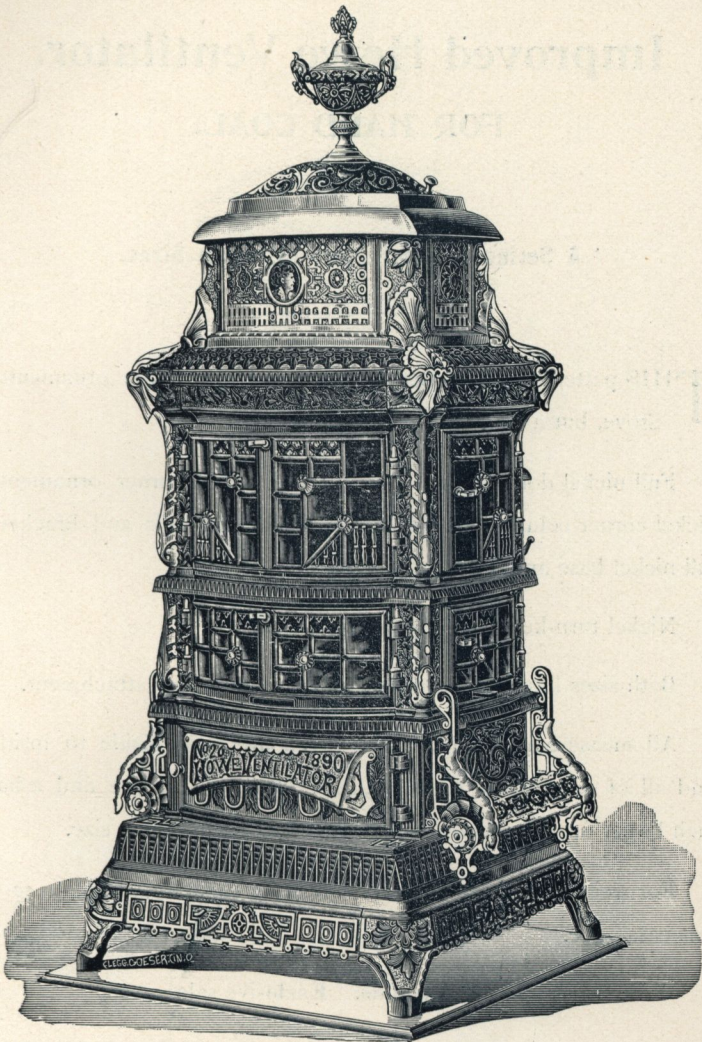
Inside cover to magazine which rises when swing cover is thrown around.

The most powerful double heater made, conveying only pure outdoor air highly heated to the rooms above.

For weights, measurements and heating capacity, see page 42 in this catalogue.

Write us for special discounts. Exclusive sale given.

No. 22. Fire-pot, 12 inches, inside measurement	\$44 00
No. 24. Fire-pot, 14 inches, inside measurement	49 50
No. 26. Fire-pot, 16 inches, inside measurement	54 50



THE IMPROVED HOWE VENTILATOR.

A SERIES, PATTERN 1890.

Improved Howe Ventilator.

FOR HARD COAL.

A Series (Special Pattern).—Two Sizes.

THIS pattern is an A Series, full nickeled and tile ornamented Stove, but a trifle less elaborate in detail.

Full nickel dome section with art tile, nickel corner ornaments, nickel corner columns, nickel name plate, nickel rails and brackets, full nickel base and legs.

Nickel turn-keys, hinge-pins and knobs.

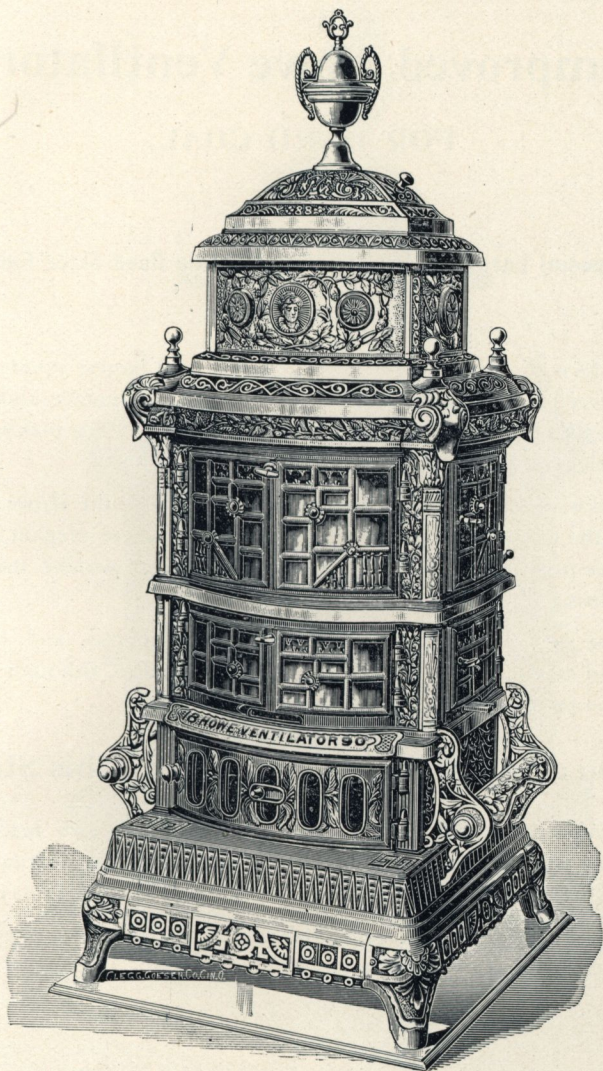
Both sizes have the tea-kettle and double-heater attachment.

All measurements of fire-pots given are from inside to inside, and all of our Stoves, therefore, have from one to one and a-half inch larger fire-pots than other makes *claiming* the same size.

For weights, measurements and heating capacity, see page 42 in this catalogue.

Write us for special discounts. Exclusive sale given.

No. 02.	Special Pattern, fire-pot 14 inches <i>inside</i> ,	. . .	\$47 50
No. 03.	Special Pattern, fire-pot 16 inches <i>inside</i> ,	. . .	52 50



THE IMPROVED HOWE VENTILATOR.
A SERIES (SPECIAL PATTERN),

Improved Howe Ventilator.

FOR HARD COAL.

Our Special Large Heater.

Equal to a Good-Sized Furnace.

THIS is the handsomest, most powerful, and largest square stove ever made. Elegant in design, full nickel ornamentation with art tile and bronze ornaments, the massive nickel dome making it a most elegant and imposing stove.

We wish to impress upon every dealer handling the Howe Ventilators the importance of placing at least *one* of these elegant stoves in some prominent place in his town as the *best possible* means of advertising the stoves which they handle.

The No. 19 is carefully crated in two sections, and can be shipped as safely and handled as easily as a No. 26, although weighing 860 pounds.

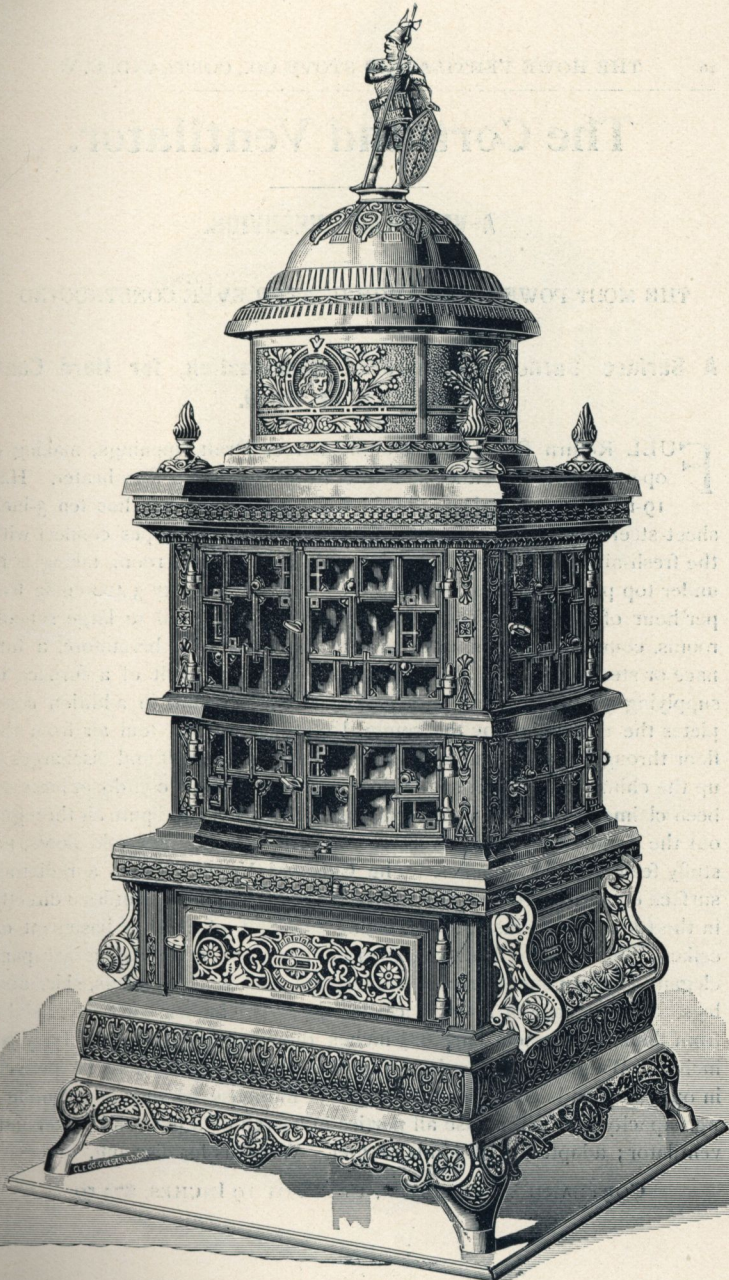
You can have no Competition on this Stove

As it is positively the **ONLY** square stove of this size made, and the only strictly first-class full nickel stove suitable for heating large stores, halls, churches and schools being manufactured to-day.

For weights, measurements and heating capacity, see page 42 in this catalogue.

Write us for special discounts. Exclusive sale given.

No. 19. Fire-pot 19 inches *inside*, with tea-kettle attachment, . \$80 00
 Double Heater Attachment, 50



SPECIAL LARGE HEATER, NO. 19.

The Cortland Ventilator.

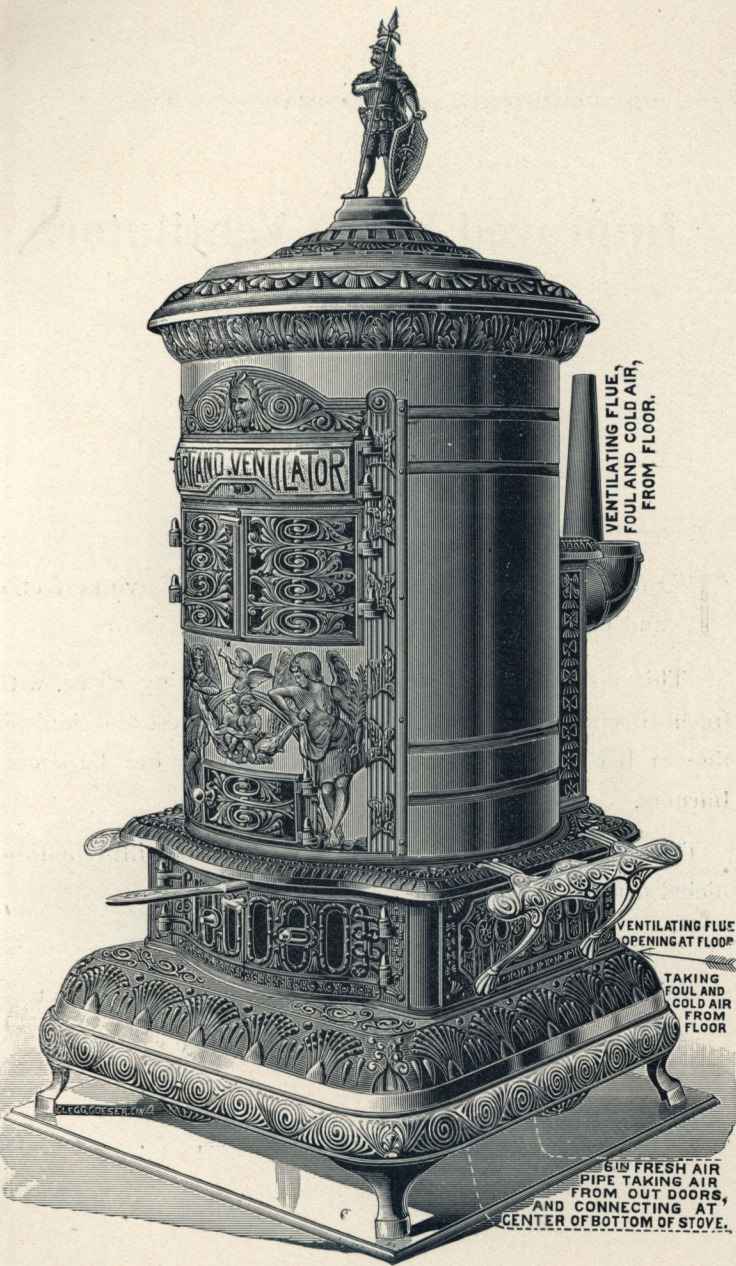
A VERITABLE VESUVIUS.

THE MOST POWERFUL LARGE HEATER EVER CONSTRUCTED.

A Surface Burner of Improved Construction, for Hard Coal, Soft Coal or Wood.

FULL Return Flues with Double Direct Draft Openings, making it operate perfectly either as a direct-draft or return-flue heater. Has 19-inch fire-pot, takes full 6-inch fresh-air pipe, and has ten 3-inch sheet-steel pipes surrounding the fire-pot. Six of the pipes connect with the fresh-air chamber and four re-circulate air in the room, taking it in under top plate of ash-pit section. Ventilating capacity 3,400 cubic feet per hour of *fresh air from outside*. Specially adapted to large school-rooms, country churches, or other large rooms where, heretofore, a furnace or steam has been necessary. Has all the merit of a furnace in supplying an abundance of fresh air from outside, and in addition completes the circulation by the removal of the cold and foul air from the floor through a capacious foul-air flue in the stove itself and discharges it up the chimney. This is something which no furnace can do, or has ever been claimed to do, and insures an even temperature and pure air throughout the room, or through several connecting rooms. No cold floors, no stuffy feeling, no headaches. The Cortland Ventilator has a radiating surface equal to a 19-inch fire-pot furnace, all of which is utilized directly in the room heated instead of wasting one-half of it in a basement or cellar. Shaking and draw-center grate, large and commodious ash-pan, elegant top ornament, nickel name-plate, foot rails, brackets, skirt and legs. Size of base or floor space occupied $37\frac{1}{2}$ inches each way, height from floor to ornament base $68\frac{1}{2}$ inches, diameter of Russia iron body 30 inches. Weight, 725 pounds. This Heater will be found to be perfect in operation and economical in fuel; has immense heating and ventilating capacity and will please all parties in search of a powerful heater and ventilator; adapted to all kinds of fuel. Write us for discount.

CORTLAND VENTILATOR, FIRE-POT 19 INCHES, \$73.50.



THE CORTLAND VENTILATOR.

Improved Howe Ventilator.

FOR WOOD ONLY.

One Size.

TO meet the requirements of the trade, we have perfected and place on the market our Wood Ventilator.

This stove is a full return-flue, base-heating stove, with fresh-air chamber in base, fresh air corner flues, and foul-air flue at back, and identical in principle with our hard coal burners.

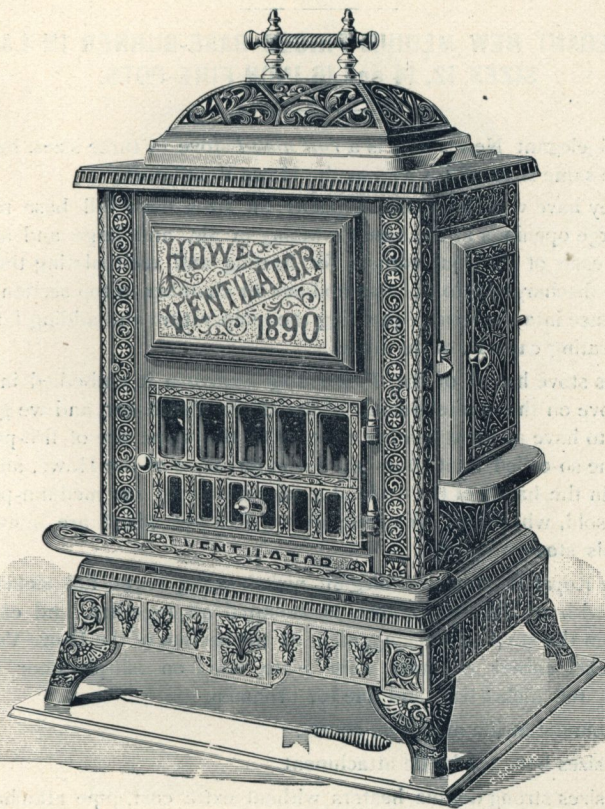
Two boiler-holes under swing top. Mica illumination, nickel ornamentation.

A powerful heater and ventilator.

Will meet all requirements in a wood-burning district.

Write us for special discounts. Exclusive sale given.

No. 25. Wood Ventilator, wood 21 inches, . \$23 00



THE IMPROVED WOOD VENTILATOR.

Our Champion "Middle Weight."

THE ROYAL GEM.

AN ELEGANT NEW MEDIUM-PRICED BASE-BURNER IN LARGE SIZES, 12, 14 and 16 INCH FIRE-POTS.

THIS elegant New Stove is a *full nickel* stove, in three sizes, having the same sizes of fire-pots as the Howe Ventilators.

They have very large flue capacity, all sizes have full base return flues, large openings in the base for taking in air, and large and ample flues in each of the four corners for heating and recirculating the air, which is discharged into the commodious air chamber in top section, and from thence into the room, equalizing the temperature and adding largely to the heating capacity of the stove.

This stove has all of the *Ventilating System* in it embodied in any other stove on the market outside of the Howe Ventilator, and we guarantee it to have as great heating capacity to the same size of fire-pot as any of the so-called Ventilators put out in imitation of the Howe, and we place it in the hands of the trade at a price as low as *any* medium-priced stove is sold, which lack *all* of the *special* features which are bound to make this stove a seller.

The Royal Gem has an elegant nickel swing cover, full nickel top section, with art tile decorations, is mounted all together, and can be lifted from the stove in blacking, same as the section of the Howe Ventilator, nickel corner columns, name-plate, hood on ash-pit door, rails, brackets, full nickel base and fine top ornament.

Automatic inside magazine covers.

All sizes have tea-kettle attachment.

All sizes strong double heaters without extra cost, pipe attaches at back of nickel section.

Write us for discounts.

No. 120.	Fire-pot 12 inches, inside measurement	\$28 00
No. 140.	Fire-pot 14 inches, inside measurement	32 00
No. 160.	Fire-pot 16 inches, inside measurement	36 00

Our New Cheap Base-Burner.

“BE=AT=US.”

THE BEST LOW-PRICED BASE-BURNER ON THE MARKET. FOR HARD COAL. THREE SIZES.

IN order to supply our customers with something cheaper in a handsome and desirable stove than we have heretofore made, we have added to our line an entirely new Base-Burner in three sizes, 10½, 12 and 14 inch fire-pots.

All sizes full *base return flues*. *Recirculating flues* in each corner. Large air chamber in top section. All sizes *double heaters* without extra cost.

These are features which you cannot find in any other stove of the same class and price in the market. The Beatus has all of the essential features of a first-class stove, and yet sells at the price of a cheap stove.

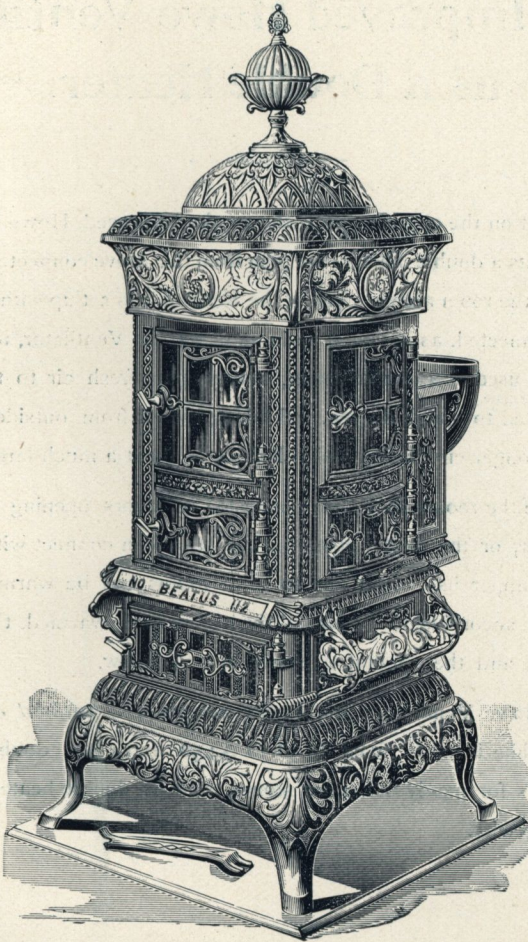
Nickel dome, nickel panels, nickel foot-rails and brackets, nickel name-plate, full nickel base, turn-keys, hinges-pins, knobs, etc. Art tile decorations and fine top ornament.

This stove has a larger flue capacity than any stove of its class and of the same size of fire-pot, and is a strong and powerful heater.

This stove is not a ventilator, but is provided with powerful recirculating flues, for the equalization of temperature and increasing its capacity. It has been thoroughly tested, is perfect in operation, and will give perfect satisfaction to any one in want of a first-class but low-priced stove.

Write us for discounts.

No. 110.	Fire-pot 10½ inches, inside measurement,	. .	\$22 00
No. 112.	Fire pot 12 inches, inside measurement,	. .	26 00
No. 114.	Fire-pot 14 inches, inside measurement,	. .	30 00



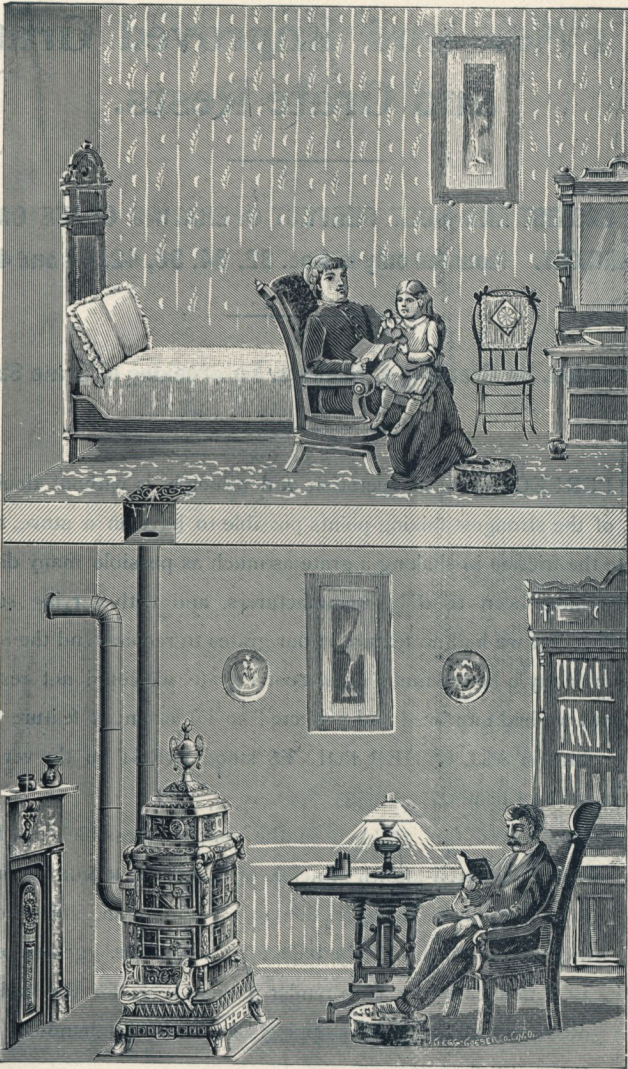
OUR NEW CHEAP BASE-BURNER, "BE-AT-US."

The Improved Howe Ventilator as a Double Heater.

THE cut on the opposite page shows the Improved Howe Ventilator used as a double heater, the pipe from the stove connecting with a register in the room above. When the Ventilator is set up with the fresh-air pipe connected, as it should be in all cases, the Ventilator, unlike any other stove used as a double heater, conveys pure fresh air to the rooms above, heated to a high degree, and taking the air from outside it forces a much stronger circulation and will therefore heat a much larger space.

Where the rooms above are connected by doors opening from one to the other, or the heater pipe from the stove can connect with a register in the upper hall, from one to three rooms can be warmed on the upper floor, according to the size of the rooms to be warmed, the size of stove used, and the amount of space heated below.

All Howe Ventilators are double heaters and without any extra expense, while it costs from \$1.50 to \$3.50 extra for double heater attachments for nearly all other stoves sold as double heaters, having far less capacity.



Our New and Improved Grates and Grate Rests.

**THE EASIEST AND MOST PERFECT OPERATING GRATE ON THE
MARKET. Mounted only in Nos. 32, 34, 36, 42, 44 and 46.**

No Friction, No Breaking of Shakers, No Breaking of Grate Shanks.

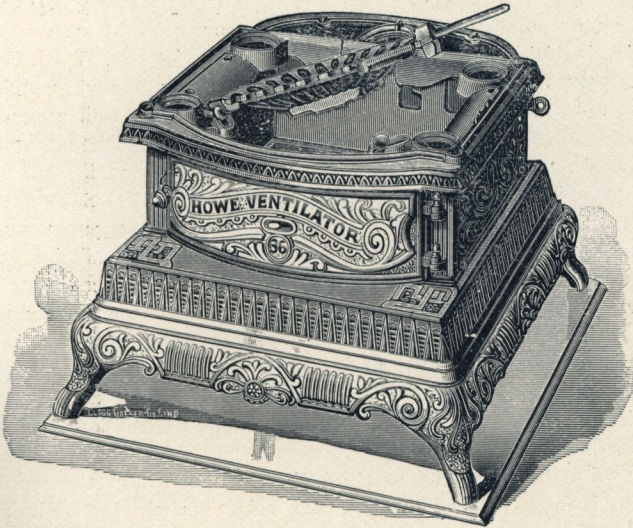
A PERFECT grate in operation and principle is without doubt *one* of the strongest talking points possible to have in a stove, and to reduce the friction in shaking a grate as much as possible many different devices have been tried by manufacturers, and with varying success. Realizing that we had no feature in our grates to recommend them to the trade over any other common draw-center grate, we could not rest content until we had improved and perfected so important a feature of our stove, which in ALL OTHER POINTS stood FIRST in the very front rank of modern heaters.

We have solved this problem in the simplest possible way by the introduction of the well-known principle of BALL-BEARINGS for the rests for all grates, thereby reducing friction to the minimum, and practically doing away with it entirely. The balls upon which these grates rest are now incased in such a way as to render it impossible for the balls ever to be gotten out of place, in shipping or in careless handling of the grate.

THIS CUT SHOWS OUR IMPROVED
BALL-BEARING RESTS.
FOR GRATES.

Our grates all ROLL on three balls, two in front, as shown in cut,
and one at the back.

A CHILD THREE YEARS OLD CAN OPERATE OUR GRATES.



We wish also to call special attention to one of the MOST IMPORTANT FEATURES of our improved grates for this season, which is this: The regular draw-center grate shown above and our *New Spherical Center Grate*, described and shown in the following pages, are INTERCHANGEABLE in all sizes, and *both series* of the Howe Ventilator for 1892. The flat draw-center grate can be taken out and our *Spherical Center Grate* be put into the SAME STOVE, or the Spherical Center Grate be replaced with a draw-center grate. This is an important selling feature which NO OTHER STOVE ON THE MARKET HAS, and which cannot help being appreciated by the trade.

OUR IMPROVED Spherical Center Grates

WHICH ALSO RUN ON BALL-BEARING RESTS.

THE SIMPLEST! THE MOST ECONOMICAL! THE BEST!

No Cogs or Gears to WARP, BREAK OR GET OUT OF ORDER. Only one Shank to shake the GRATE AND REVOLVE THE CENTER.

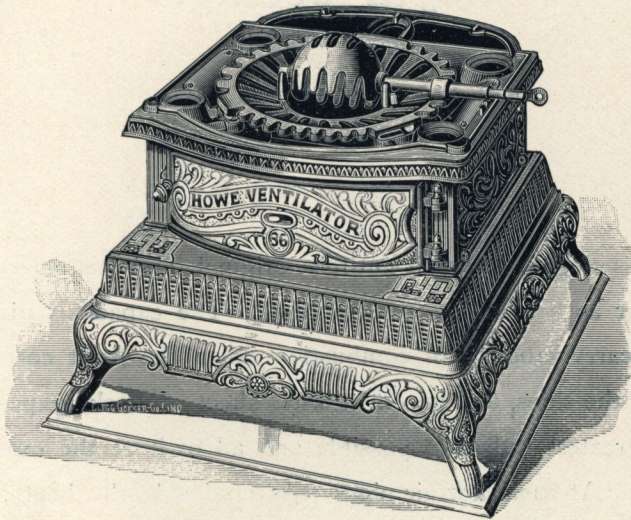
It gives the most PERFECT COMBUSTION, burning the Coal up cleanly, and PREVENTS THE FORMATION OF CLINKERS almost entirely. These grates have FORGED WROUGHT IRON SHANKS which cannot possibly be broken, and an improved form of stop.

WHAT OUR NEW SPHERICAL CENTER GRATE WILL DO,

As proven by months of continued test. If any one will watch the operation of a base-burning coal stove they will find that all around the outer edge of the grate and between the fingers of the fire-pot nothing but fine ashes accumulate, even the slate which is found in coal being nearly consumed. The reason is that where the air FIRST comes in contact with the coal, while it has its full charge of oxygen, the combustion will be nearly perfect and everything consumed, while just inside the first layer of fine ashes you will commence to find cinders, slate and clinkers and in the center of the fire-pot there will be large, hard clinkers clogging the center of the fire, and this is because the greater part of the oxygen is consumed when the air first strikes the coal and a consequent LACK of oxygen to support combustion at the center of the fire. The result is imperfect combustion a waste of fuel and a formation of clinkers.

Another reason for the imperfect combustion at the center of the fire is, that with the DUPLEX or DRAW-CENTER grates the center of the grate is the LOWEST POINT, and being directly UNDER THE MAGAZINE there is a much larger body of coal at that point than anywhere else in the fire-pot, and as ashes commence to form, the weight of the coal in the magazine, as it settles, packs the whole mass in the center of the fire close together; this will of course tend to force the draft or air passing through the coal more to the outside of the fire-pot where there is a less body of coal, and not so closely packed together, leaving the center of the fire without sufficient air. The center of the grate being the lowest also forms a pocket where slate, cinders and ashes naturally collect every time the stove is shook or raked out.

IMPROVED SPHERICAL CENTER GRATE.



THE DIFFERENCE.

The Spherical Center Grate instead of being lowest in the center is highest at that point, and from its form gives a much larger grate surface at the center than the old style grates, which will necessarily supply the center of the fire with much more air and oxygen. The center of the grate being the highest point in the grate prevents the accumulation of ashes, cinders and slate at that point, as this will naturally all work towards the outer edge of the grate, leaving the center of the fire always clear and free. The center of the grate being the highest, equalizes the body of coal in the fire-pot and carries air up into the center of the fire much higher than any other grate. The result of the points above named is to supply the CENTER OF THE FIRE with much more oxygen, to prevent the accumulation of incombustible refuse at the center of the grate, keeping the center of the fire always free and clear, and giving a much more perfect and economic consumption of fuel, and almost entirely preventing the formation of clinker. It is seldom necessary to turn the center of the grate over, but by simply rocking the center it can be kept clear and free. WE GUARANTEE IT the most perfect grate on the market,

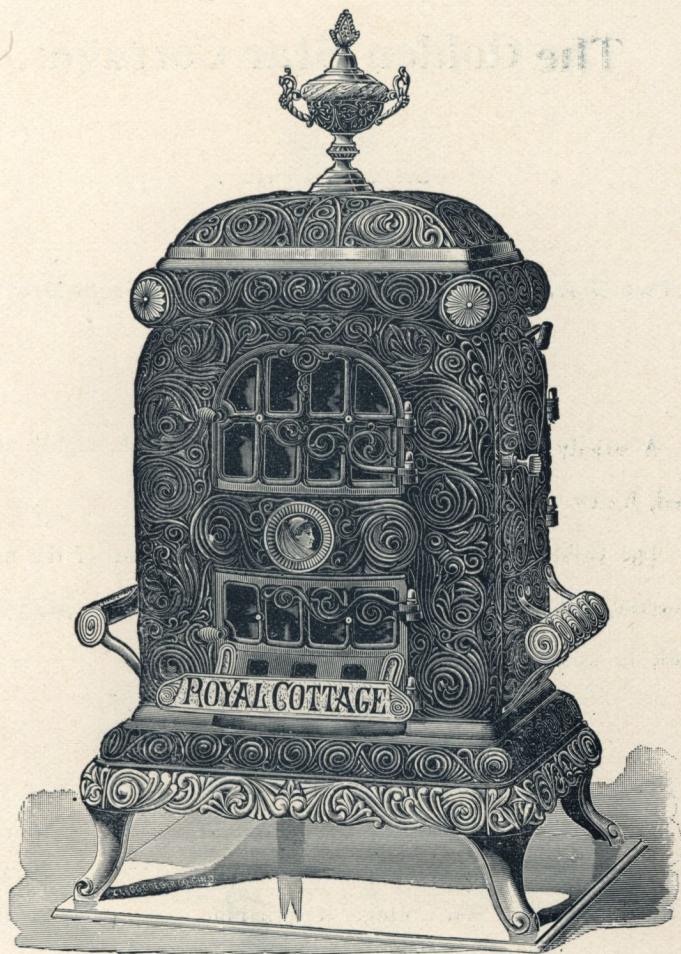
Royal Cottage.

FOR WOOD.

This elegant Parlor is entirely original, and has no competitor as a scientific construction. The capacious diving flues carry products of combustion down the front corners, along the sides, and join in a wide sheet at back, exposing the greatest radiation possible and all of it at the outside parts. At back, hot-air pipes pass up inside the heat flue, across the main body of stove inside, above fire, and discharge this hot air at front of stove, adding at least $33\frac{1}{3}$ per cent. to the heating powers.

Excellent register grate; large, square ash-pan; two boiler holes under swing top; automatic damper; beautiful tile and nickel decoration; handsome nickel base; full nickeled swing top.

No. 30—Height 40 in., wood 21 in.,	\$20 50
No. 40—Height 42 in., wood 24 in.,	23 50



ROYAL COTTAGE.

The Golden Star Cottage.

FOR WOOD ONLY.

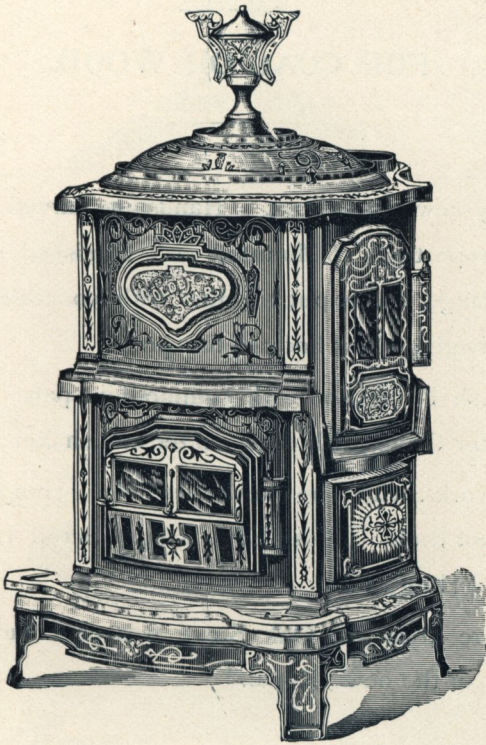
Two Sizes Return Flue.

Two Sizes Direct Draft.

A strictly first-class Wood Cottage, double back, highly nick-
eled, heavy and durable.

The Golden Star Cottage with return flue is one of the most
powerful and economical heaters made, and will fully satisfy the
trade in wood-burning districts.

No. 23	Golden Star Cottage, Direct Draft, . . .	\$15 50
No. 25	Golden Star Cottage, Direct Draft, . . .	18 25
No. 33	Golden Star Cottage, Return Flue, . . .	18 25
No. 35	Golden Star Cottage, Return Flue, . . .	21 50



THE GOLDEN STAR COTTAGE.

Royal Oak.

FOR COAL OR WOOD.

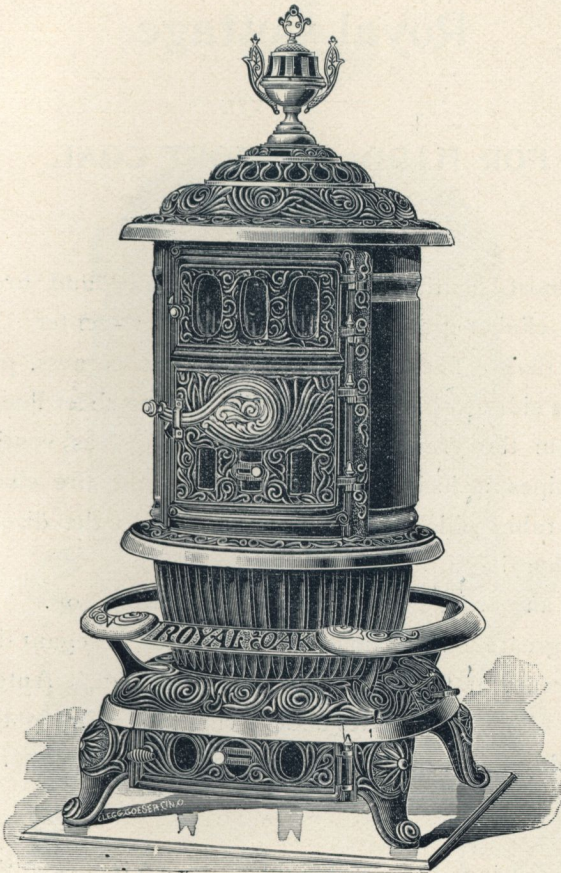
Entirely new throughout. Handsome carved design and elegant proportions. Mounted with Planished sheet steel, No. 16 gauge, and is put together with concealed rods instead of riveting sheet body to fire-pot.

Low Ash-Pit section with commodious pan. An excellent register Grate, with draw center and shaker at side.

Open work Swing Top over boiler hole. Handsome, large Nickel Foot Rails. Loose Edge Ring. Scroll Door Latch. Knobs and Hinge-Pins.

No more attractive Oak Stove was ever put upon the market than the new "Royal."

No. 34.	Height 44 inches,	\$15 00
No. 36.	Height 46 inches,	17 00
No. 38.	Height 48 inches,	19 00



ROYAL OAK.

Royal Cottage.

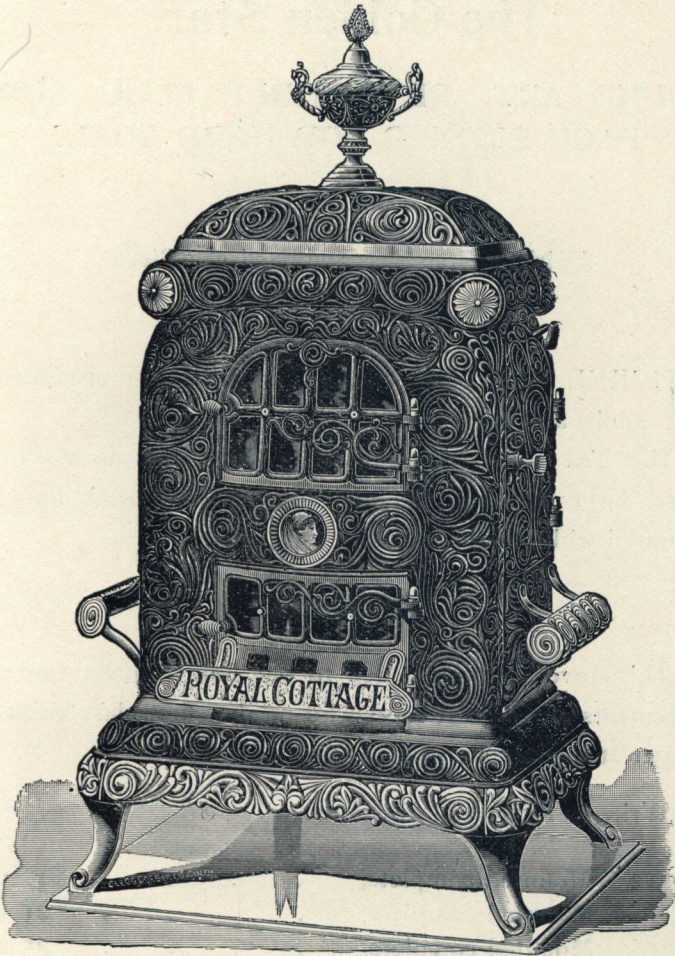
FOR HARD AND SOFT COAL.

THE most beautiful stove we make! Has round fire-pot; anti-clinker grate with shaker and draw-center. Large (4 inch) diving flues at each of the front corners, passing along the sides to back and spreading out to sheet flue, radiating from the greatest possible surface. Has ventilating hot-air pipes up inside of back flue across the fire chamber, through tubes which are entirely exposed to the direct fire and discharging at front.

New and artistic urn, and full nickel swing top.

The greatest heater made for the price. Elegant tile and nickel ornamentation. Large square ash pan. Automatic damper. Two boiler holes under swing top. Fire pot grate, etc., readily taken out at end door to convert stove for wood fuel.

No. 35. 12-inch fire pot, height to urn 40 inches, . \$22 00
No. 45. 14-inch fire-pot, height to urn 42 inches, . 25 00



ROYAL COTTAGE.

The Golden Star.

ROUND ART, REVERTIBLE FLUE, SURFACE BURNER FOR HARD COAL.

A Strictly First-Class and Handsome Stove.

NICKEL name-plate, nickel foot-rails, top ornament, knobs and hinges-pins.

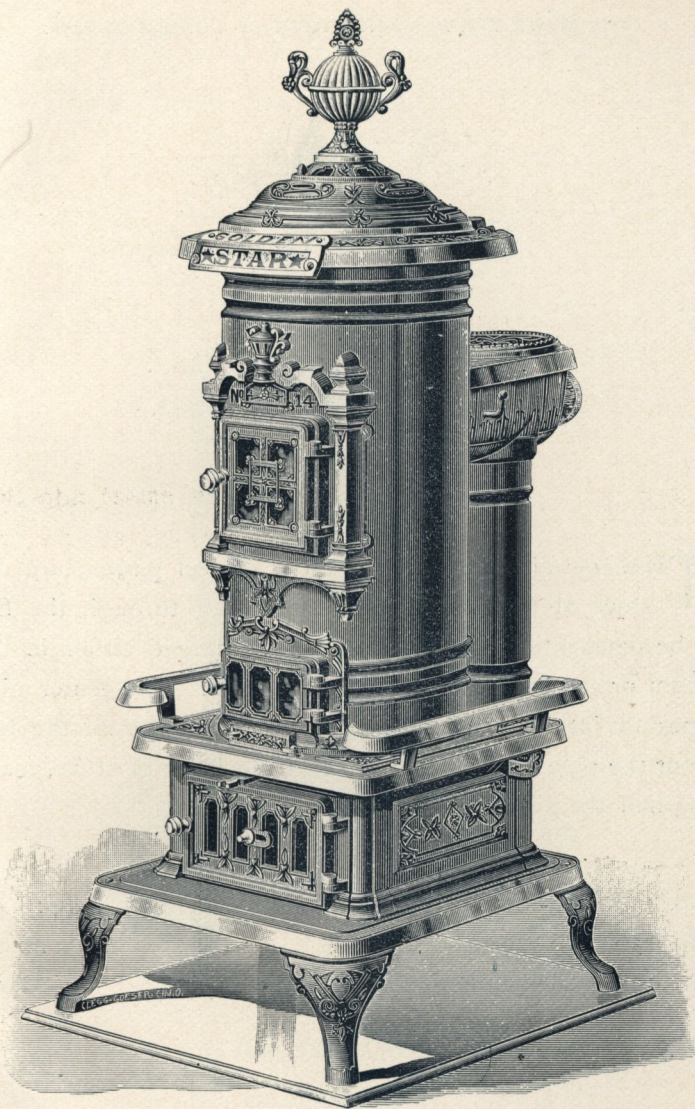
Has Tea Kettle Attachment, shaking and draw-center grate, large ash-pan, fingered fire-pot and brick linings. Mounted with Russia Iron.

THREE SIZES.

This stove has been added to our line to meet the requirements of our customers who need a first-class Surface Burner at a moderate price.

Write us for special discounts.

No. 12.	Mounted complete,	\$17 00
No. 14.	Mounted complete,	21 00
No. 16.	Mounted complete,	25 00
No. 12.	Castings,	13 50
No. 14.	Castings,	17 50
No. 16.	Castings,	20 75



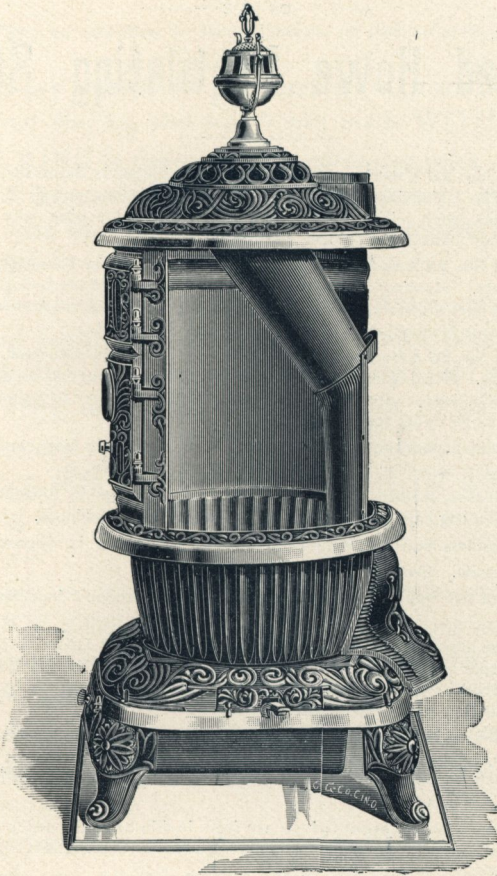
GOLDEN STAR, ROUND ART, REVERTIBLE FLUE.
SURFACE BURNER.

Oak Ventilator.

FOR COAL OR WOOD.

THE cold air is drawn from the floor and passes into the stove at top of fire-pot. By passing through the fire it becomes intensely heated, and is discharged either in the room or can be carried to room overhead. The center pipe does not interfere with putting in fuel, as opposite the fuel door the pipe is formed by the outside body of stove, making half the pipe.

No. 134.	14-inch body,	\$18 00
No. 136.	16 inch body,	20 00
No. 138.	18-inch body,	22 00



OAK VENTILATOR.

SECTIONAL VIEW.

Size of Fire-Pots, Weights and Heating Capacity

— OF THE —

Improved Howe Ventilating Stoves.

No. 32 and No. 22 A Series.—Size of fire-pot 12 inches in diameter. Weight of stove 396 pounds. Heating capacity, in well-built houses, equal to heating two rooms below 14X14 with ceiling 10 feet high and with heater pipe, one room above 14X14 with ceiling 9 feet high. Total, 5,684 cubic feet.

No. 34 and No. 24 A Series.—Size of fire-pot 14 inches in diameter. Weight of stove 450 pounds. Heating capacity, in well-built houses, three rooms below 14X14 with ceilings 10 feet high, and with heater pipe, one room above, or two below and two above of same dimensions given. Total, 7,644 cubic feet.

No. 36 and No. 26 A Series.—Size of fire-pot 16 inches in diameter. Weight of stove 526 pounds. Heating capacity, in well-built houses, four rooms below and two rooms above with heater pipe, or three below and three above of same dimensions given. Total, 11,368 cubic feet.

No. 42 A Series, Square Top.—Size of fire-pot 12 inches in diameter. Weight 360 pounds. Heating capacity, in well-built houses, same as No. 32.

No. 44 A Series, Square Top.—Size of fire-pot 14 inches in diameter. Weight 420 pounds. Heating capacity, in well-built houses, same as No. 34.

No. 46 A Series, Square Top.—Size of fire-pot 16 inches in diameter. Weight of stove 490 pounds. Heating capacity same as No. 36.

Nos. 02 and 03 Special Pattern correspond in size and heating capacity to Nos. 34 and 36.

If any of the above stoves are used to heat a SINGLE LARGE ROOM like a school room, store or hall, they can be relied upon to HEAT DOUBLE the number of cubic feet given above, on account of there being no partitions to obstruct the complete circulation of the heated air.

No. 19 A Series is a special large heater for large stores, halls, school rooms or small churches, affording ample heat, ventilation, and equalization of temperature in a room containing from 60,000 to 70,000 cubic feet of space. Size of fire-pot 19 inches. Weight, 865 pounds.

All Fire-Pot Measurements given are from inside to inside and are guaranteed to run up to measure, and larger than other stoves in the market claiming same size of fire-pot.

Every Stove is a Double Heater.—The heated air carried to the rooms above is pure, fresh air from outside, and not the foul, vitiated air from the rooms below, as is the case with all other stoves where a heater pipe is used.

The Amount of Space Heated by very many who are using the Howe Ventilator largely exceeds the estimates which we have given above, as will be seen from our book of testimonials, but we prefer to be conservative in our estimate of heating capacity.

Special Directions in Ordering Repairs.

☞ Pay no attention to date of patents on back of stove. ☞

IF repairs are wanted for the first stove made, which was numbered No. 14, and which was made WITHOUT any MIDDLE RING between upper and lower mica doors, and the base of the stove BELOW the ash-pit door made SEPARATE from the rest of the stove, order repairs for No. 14, pattern 1885.

If repairs are wanted for the square-top stove made WITH middle ring between upper and lower mica doors and the stove ALL MOUNTED TOGETHER and sold in the years 1886 and 1887, order repairs for No. 14 or 16, pattern 1886.

If repairs are wanted for the square-top stove sold in 1888, as a B series, with nickel swing cover only, the section under it not being nickeled, order repairs for No. 14 or 16 B series, pattern 1888.

If repairs are wanted for the B series stove sold in 1889 with FANCY EDGE instead of polished edges on base-top, middle ring and open-work top, order repairs for No. 41 or 61 B series, pattern 1889.

If for the stove with HIGH OVAL DOME brought out in 1887, order repairs for either No. 01, 02 or 03, 1887 pattern, as the case may be.

If for the stove brought out in 1888 with LOWER swing cover and nickel name-plate on front with date on, order repairs, giving the number of the stove for pattern 1888.

If repairs are wanted for stoves made in 1889, 1890 or 1891, give number of stove and date as found on back of stove.

THE
Howe VENTILATING
 STOVE
 HEAT,
 VENTILATION,
 ECONOMY.

SECURES

SUPPLIES
 all the
 ADVANTAGES
 of a

HEATER,
 at much less out-
 lay of money and
 trouble; and, in
 addition,

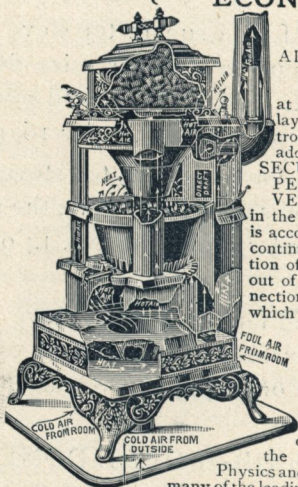
SECURES
 PERFECT
 VENTILATION

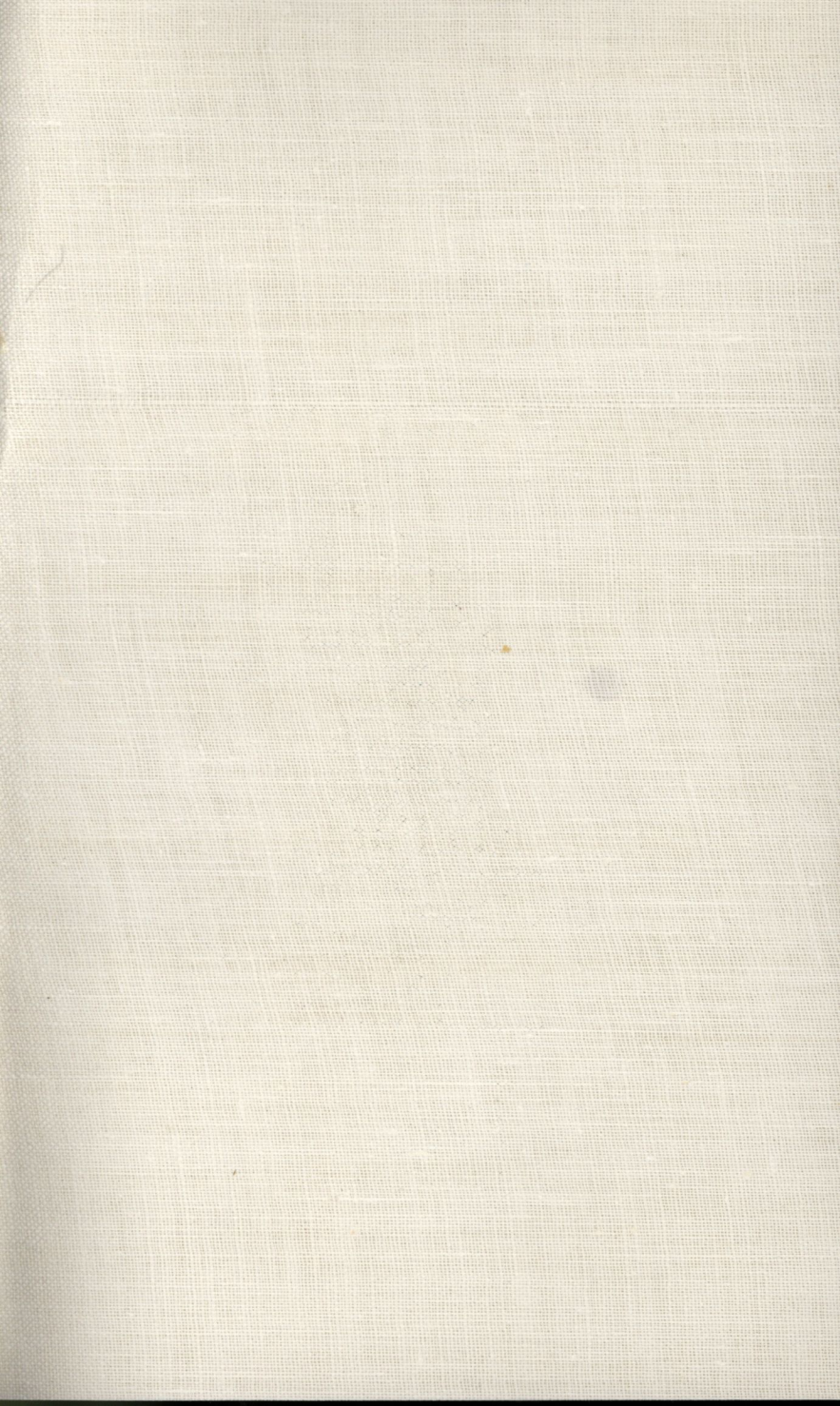
in the rooms. This
 is accomplished by a
 continuous circula-
 tion of fresh air from
 out of doors, in con-
 nection with a flue
 which takes the foul
 air from the
 floor, and carries
 it up the
 chimney.

The HOWE
 Ventilator
 has the en-
 dorsement of
 the Professors of

Physics and Chemistry in
 many of the leading Universities
 of the country, and from hundreds of people who
 have used them, from the Atlantic to Salt Lake City.

The HOWE VENTILATING STOVE CO., Cortland, N. Y.





The Improved Howe Ventilating Stoves.

Secure { Largest Heating Capacity,
Perfect Ventilation,
Greatest Economy.

Superior to Furnaces or Steam.

The Cheapest System of Ventilation
in the World.