

CATALOGUE "D"
1907

GRATES
AND
FIREPLACE FIXTURES
IN
IRON AND BRASS

DRAKE MARBLE & TILE CO.
ST. PAUL, MINN. MINNEAPOLIS, MINN.

GAS GRATES OF ALL KINDS IN CATALOGUE "E"



The fireplace goods offered in this catalogue are selections from the latest and best patterns. While all are not carried in stock, they can be furnished on short notice.

Grates can be furnished in any desired plating. The regular finishes are:

W. I. Wrought Iron or Black.	O. B. Oxidized Brass.
B. B. Bright Brass.	B. C. Bright Copper.
L. B. Brush Brass.	A. C. Antique Copper.
A. B. Antique Brass.	O. C. Oxidized Copper.

Oxidized Copper or Brass are considered the best plating to stand climate and heat.

Special finishes, for which an extra charge will be made, are:

Extra Bright Brass, Gold Finish, Mat Gold Finish.

Sand Blast Brass, Sand Blast Copper.

Special care must be taken in ordering special size frames to state whether **inside** or **outside** measure is given. All measures will be **considered as outside**, unless otherwise specified. If opening in fireplace is given, state whether entire face of frame is to lap on the facing, or only usual lap of $\frac{1}{4}$ inch.

In giving sizes always state **width first**.

We will not hold ourselves responsible for mistakes that occur, unless these instructions are carried out.

MONARCH AND BUCKEYE

PORTABLE OR SET GRATES.

The continued use for over thirteen years of the Double Draft Portable Grates, or Fireplaces, has proven that they are the most economical, practical and satisfactory fireplaces made. They have the advantage over the regular common brick setting in that they are—

A complete Grate all mounted ready for setting.

They require no fire brick or fire tile in setting.

They can be set by any mason.

They overcome imperfect chimneys.

They prevent smoky chimneys and puffing of smoke into the room.

The dampers can be so operated as to control the fire. By opening the lower damper, which is directly over and close to the fire, it forms a strong direct draft, which, as soon as it heats the flue, forms a rapid current of air, thus carrying off the dense smoke. When the fire is well under way the lower damper can be closed, the upper one remaining open. The heat is then reflected into the room.

The upper damper in all grates is operated with a malleable iron thumb-screw.

This damper can be closed tight when grate is not in use, preventing dust or soot from entering the room.

Has a loose cross piece between the upper and lower dampers, which prevents it from cracking or warping, and can be easily replaced. This piece can be removed in setting the grate, so as to leave the top free and open, and permit of easily wiring the grate back and plastering up the hood. This is a feature which is contained in no other grates.

Some of these grates are so arranged that they can be operated same as a stove, and fire can be kept for an indefinite period.

They are also provided with shaking bottoms.

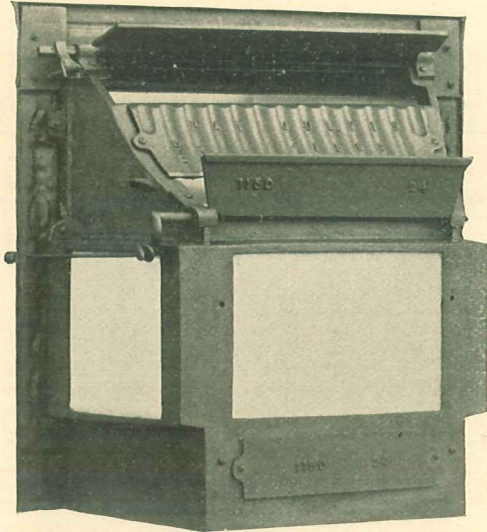
They are all brick lined, or iron backed, with air chambers at the side, and require tile only at the rear of the fire.

Each kind is fully described in this book.

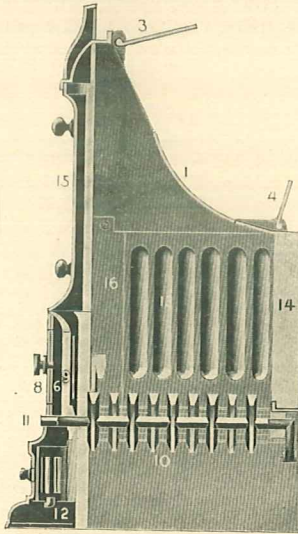
NOTE.

In setting a Monarch or Buckeye Grate, the fireplace must be built up (allowing room for the damper rods and handles to work freely) the shape of the back, with $\frac{3}{4}$ -inch air space all around to allow for expansion, and to prevent the metal from burning out. Never wall in tight. The floor should be level so the frame will fit tight against the tile. It will not draw if there is a pocket in the rear. Then you should plaster from the hood up, making a smooth arch, but not so much as to crowd the upper damper.

THE IMPROVED MONARCH GRATE.



Side and Rear View of back for Monarch Grate, showing Upper and Lower Dampers.



- No. 1. Cross-piece, loose.
 3. Upper damper.
 4. Lower or direct damper.
 6. Ash space between baskets.
 8. Outside basket, with slide.
 9. Inside basket, or fire front.
 10. Shaker fingers.
 11. Shaker head.
 12. Ash screen, or crown piece.
 14. Fire tile.
 15. Summer piece.
 16. Jamb, which can be removed so as to replace tile.

Ranks first among Portable Grates or Fireplaces.

The leading feature of this grate wherein it excels all others is—

Its curved corrugated top, which reflects the heat into the room.

Improved method of operating upper damper (with thumb-screw), which permits it to be opened any desired width without danger of dropping.

Damper attachments are of malleable iron.

Extra-heavy grate bars. Back bar and trunnions are protected under back, preventing same from warping or being clogged with cinders.

It has double basket with extra-wide space between them, which allows the ashes to fall behind the screen.

The above improvements are not found in any other grate made.

It also has—

Damper in both basket front and ash screen, whereby fire can be kept under control an indefinite period, same as a stove.

Fire pot is full lined with fire tile to a height that will protect back from live coals. The tile can be renewed without removing the grate.

The shaker head is of malleable iron. The grate bottom, besides freeing itself of ashes when being operated, opens up the fire and does not jar the grate from position.

All parts are extra heavy and so constructed as not to be easily burned or warped, and can be readily renewed if necessary.

Hoods of all Monarch frames are double, or lined, so as to preserve the plating.

THE NEW MONARCH.

The latest of all grates.

Has all known modern improvements.

Has more desirable features than any grate made.

Has the largest fire pot of any grate made.

Has no metal exposed to fire except back damper.

Has curved tile top, very thick. The curved shape reflects the heat into the room.

Top tile is so arranged that cracking of same will not injure the grate.

Has double basket front with damper in same. Ashes fall between these baskets under grate.

Has damper in ash screen so as to control the fire.

Has double or lined hoods to frames so as to preserve the plating.

Has three top dampers:

Upper, or flue damper, operated by our improved thumb screw attachment, whereby damper can be opened any desired width with great ease, controlling the draft up the chimney, and can be closed tight to prevent dust or soot from entering the room.

Direct, or lower damper, which is used in starting the fire; being directly over the fire, acts the same as a blower, carrying off first heavy smoke and gases, soon heating the flue, thus producing a quick fire and overcomes smoking chimneys. This damper is to be closed as soon as fire is under way, so as to reflect heat into the room.

Down, or check draft damper. This damper controls a flue 1½ wide from base of grate under fire to top of back. This flue is to be used in checking and preventing draft through the fire, causing a down draft, whereby fire can be kept alive, consuming limited amount of fuel. It is also used when shaking the grate, to carry the dust up the chimney.

Extra-heavy rocker shaker bottom, with trunnions and back bar protected from fire under back.

Back bolted together, allowing for expansion.

Fire tile above fire bed set in asbestos cement.

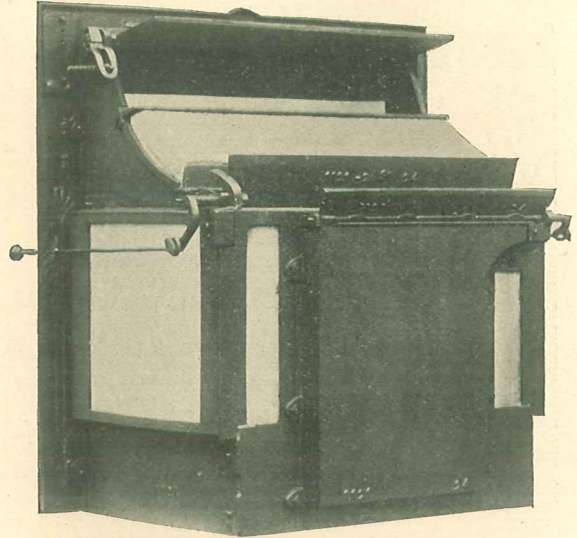
Size of fire pot, front 24, back 21½, depth 10 inches.

Outside depth of grate over all, 16 inches.

Width of back over all, 28½ inches.

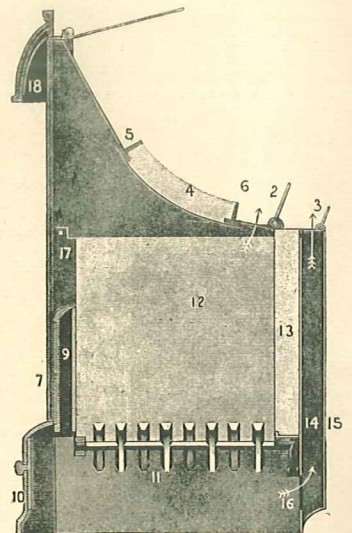
Shipping weight, 17 tile, 370 pounds.

Shipping weight, 16 tile, 325 pounds.



Side and Rear View of the New Monarch, showing dampers, tile top and down draft flue. Note mode of holding top tile in position. Also screw arrangement to open upper damper.

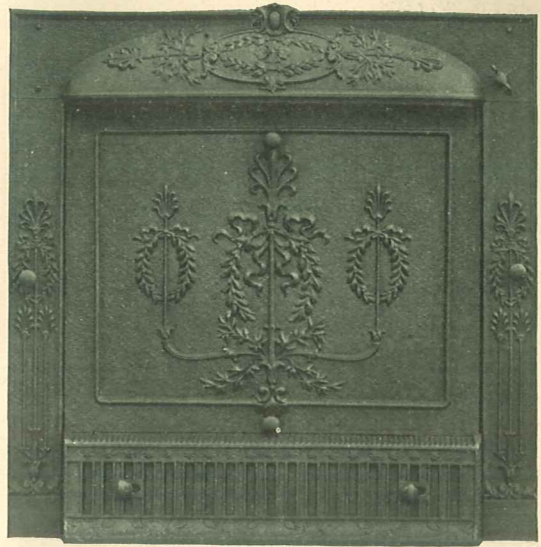
- No. 1. Upper or Flue Damper.
2. Lower or Direct Damper.
3. Down Draft Damper.
4. Top Tile.
- 5 & 6. Anchor Irons holding top tile.
7. Outside Basket.
8. Inside Basket.
9. Ash space between baskets.
10. Ash Screen or Crown Piece.
11. Shaker Bottom.
12. Side Fire Tile.
13. Back Fire Tile.
14. Down Draft Flue.
15. Shell to down draft flue.
16. Opening under grate for down draft flue.
17. Jamb on which basket hangs. Right jamb can be removed so as to replace fire tile without removing grate.
18. Arch Bar or double Hood.



Sectional View of The New Monarch, showing down draft flue, curved tile top and top dampers.



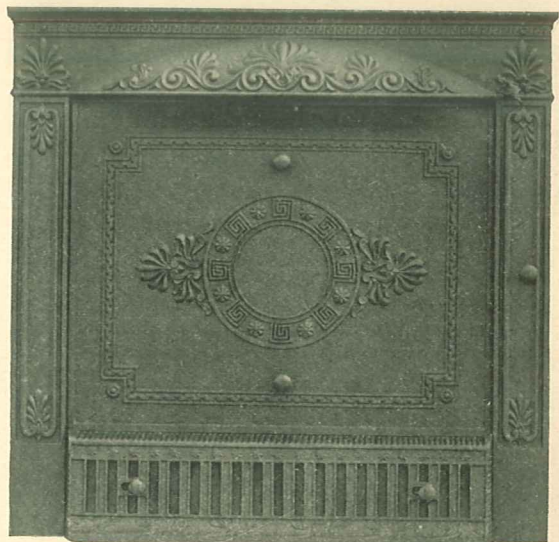
Open View of the New Monarch, showing double basket front and curved top tile.



No. 1121. 30½ inches wide. 24 inch grate.

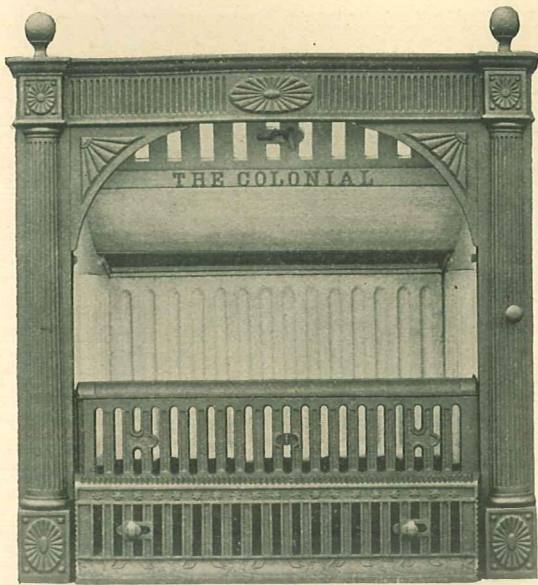


No. 1122-17. 30½ inches wide. 24 inch grate.
 No. 1122-16. 24½ inches wide. 20 inch grate.

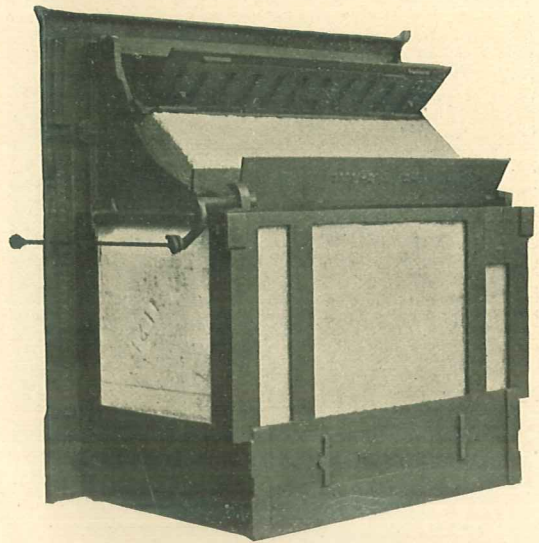


No. 1133. 30½ inches wide. 24 inch grate.

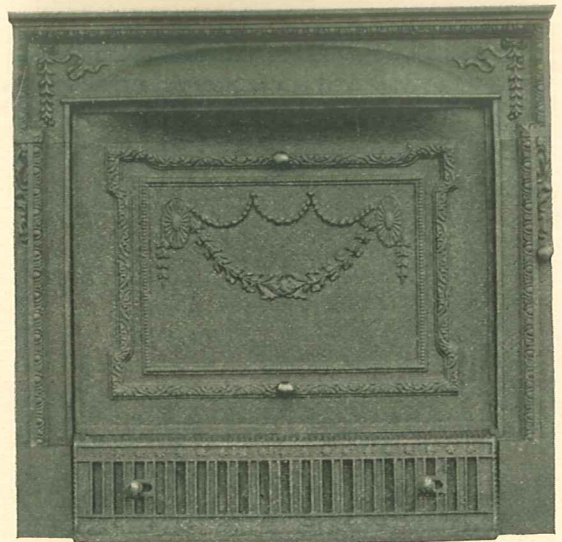
THE NEW MONARCH.



Open View of The Colonial.



Rear View of The Colonial.

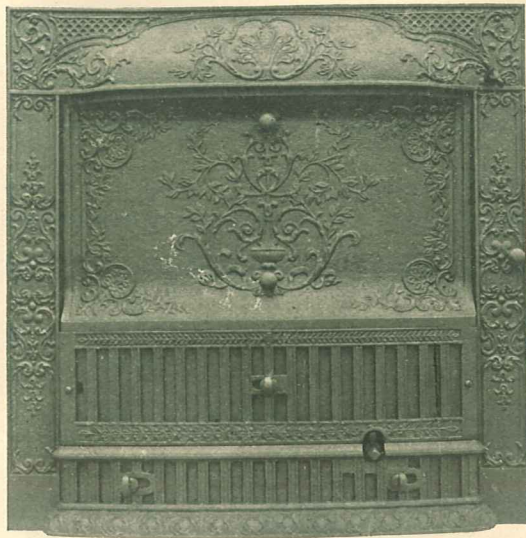
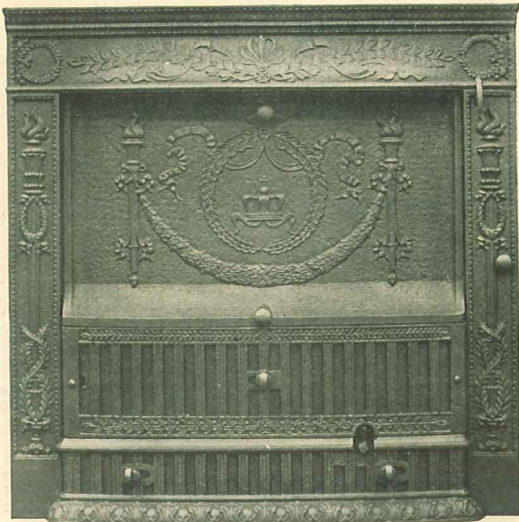


THE COLONIAL.

No. 1135. 30½ inches wide, 30¼ inches high. 24 inch opening only.

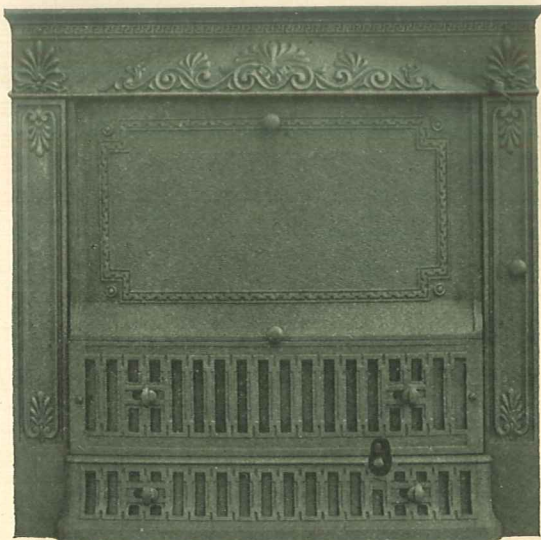
No. 1136. 30½ inches wide, 30¼ inches high. 24 inch opening only.

Has the same tile arrangement as the New Monarch. Upper damper throws back instead of operating with worm screw.



No. 1116-17. 30½ in. wide, 30¼ in. high. 24 in. grate.
 1116-16. 24½ in. wide, 30¼ in. high. 20 in. grate.

No. 1110-17. 30½ in. wide, 30¼ in. high. 24 in. grate.
 1110-16. 24½ in. wide, 30¼ in. high. 20 in. grate.

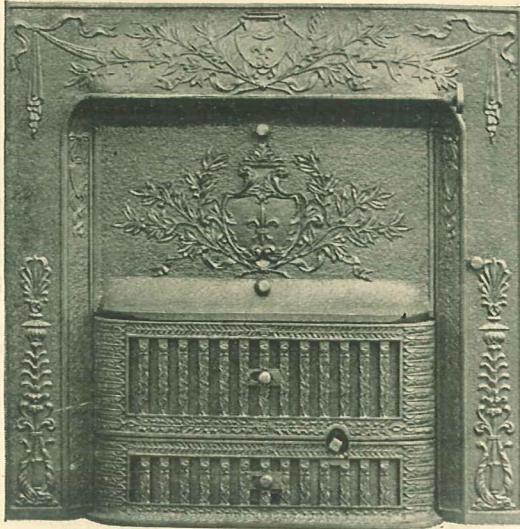


No. 1123. 30½ in. wide, 30¼ in. high. 24 in. grate.

No. 1117. 30½ in. wide, 30¼ in. high. 24 in. grate.
 1108. 24½ in. wide, 30¼ in. high. 20 in. grate.

Summer Piece to the Crown Series of The Monarch.

THE MONARCH.



THE MONARCH.

No. 1104. $30\frac{1}{2} \times 30\frac{1}{2}$ inches. 20 inch grate.

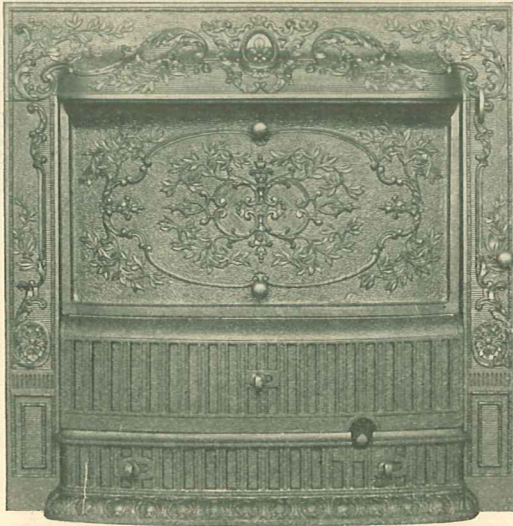


THE MAJESTIC.

No. 1115-17. $30\frac{1}{2}$ in. wide, $30\frac{1}{4}$ in. high. 24 in. grate.

1115-16. $24\frac{1}{2}$ in. wide, $30\frac{1}{4}$ in. high. 20 in. grate.

This grate is constructed on same principle as the Monarch, but with medium weight shaker bottom. Extra wide space between the basket fronts, well plated.



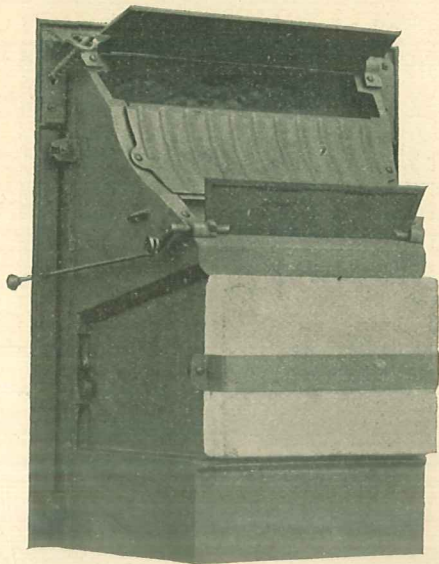
THE MONARCH "B."

No. 1113-17-24. $30\frac{1}{2}$ inches wide. 24 inch grate.

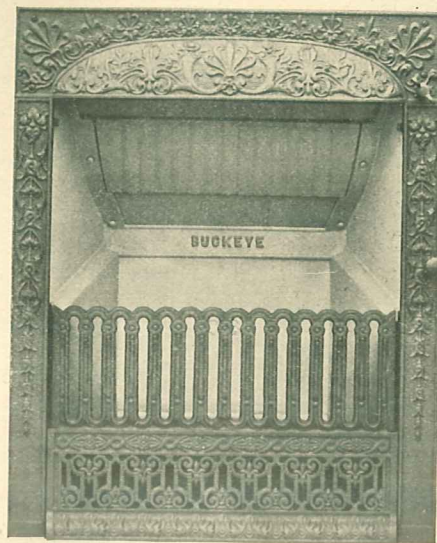
1113- 17. $30\frac{1}{2}$ inches wide. 20 inch grate.

1113- 16. $24\frac{1}{2}$ inches wide. 20 inch grate.

This grate differs from the regular Monarch, in that the outside basket is removable; the shaker bottom is of medium weight; well plated.



Side view of the Buckeye Grate, showing curved top and damper attachments.



Open view of the Buckeye Grate, showing curved top which reflects the heat into the room.

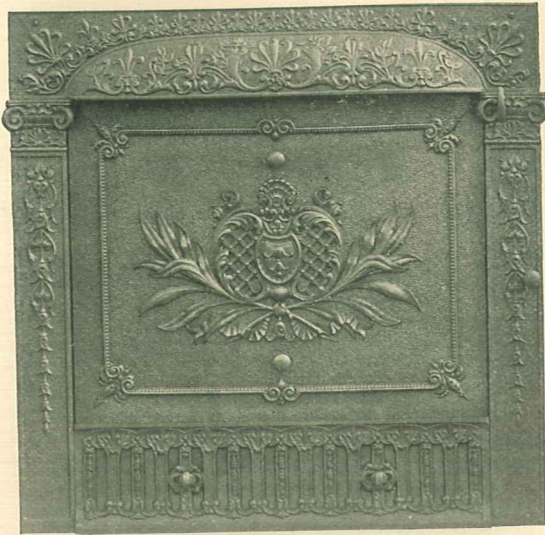
THE BUCKEYE GRATE.

This Grate is now made with curved top, and our improved thumb-screw method of opening upper damper—same as in the Monarch—and for a medium price grate, suitable for soft coal, has no equal either in finish, construction or weight. All castings exposed to fire are heavier than any grate made of similar construction.

These Grates differ from the Monarch, in that they have fire tile in back only, with iron sides and air chamber which prevents burning out. The trunnions and back bar of the shaker bottom are not protected, though, as in the Monarch.

They are made either with shaker or dumping bottom, open or damper in ash screen.

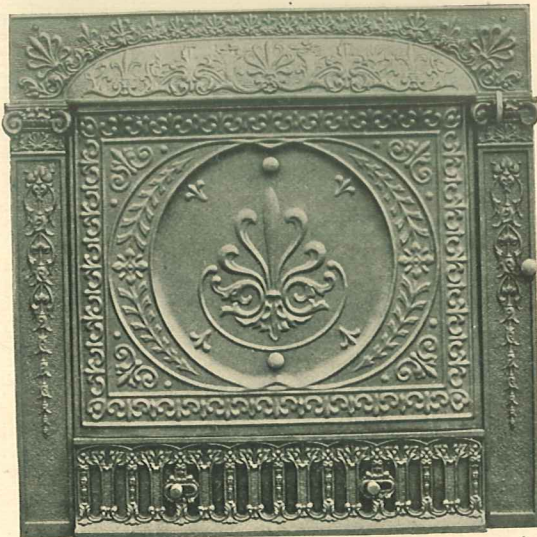
As these Grates do not require any material in setting, have the double draft system, preventing smoking chimneys, we recommend them for all cases where a medium price grate is wanted.



No. 1047. 30½ in. wide, 30¼ in. high. 24 in. grate.



No. 1046. 24½ in. wide, 30¼ in. high. 20 in. grate.
Can be furnished with ash screen, same as No. 1047, at
an additional cost of 40 cents.



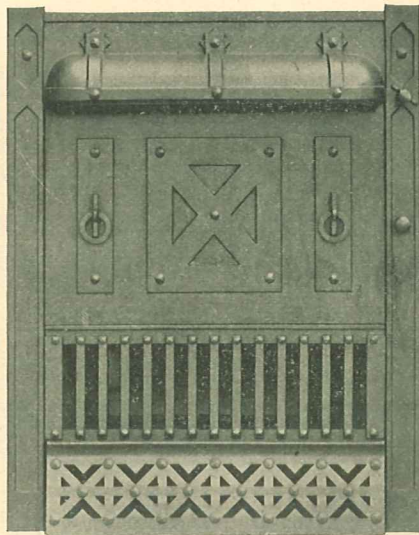
No. 1042. 30½ inches wide, 24 inch Grate.
1043. 24½ inches wide, 20 inch Grate.
Sheet Steel Summer Piece.



No. 1055. 24½ inches wide, 20 inch Grate.
1056. 30½ inches wide, 24 inch Grate.

THE BUCKEYE.

Made either Plain Dumping or Shaker Bottom.



No. 1054-16. 24½ inches wide. 20 inch Grate.
1054-17. 30½ inches wide. 24 inch Grate.
 Made either with plain dumping or shaker bottom.



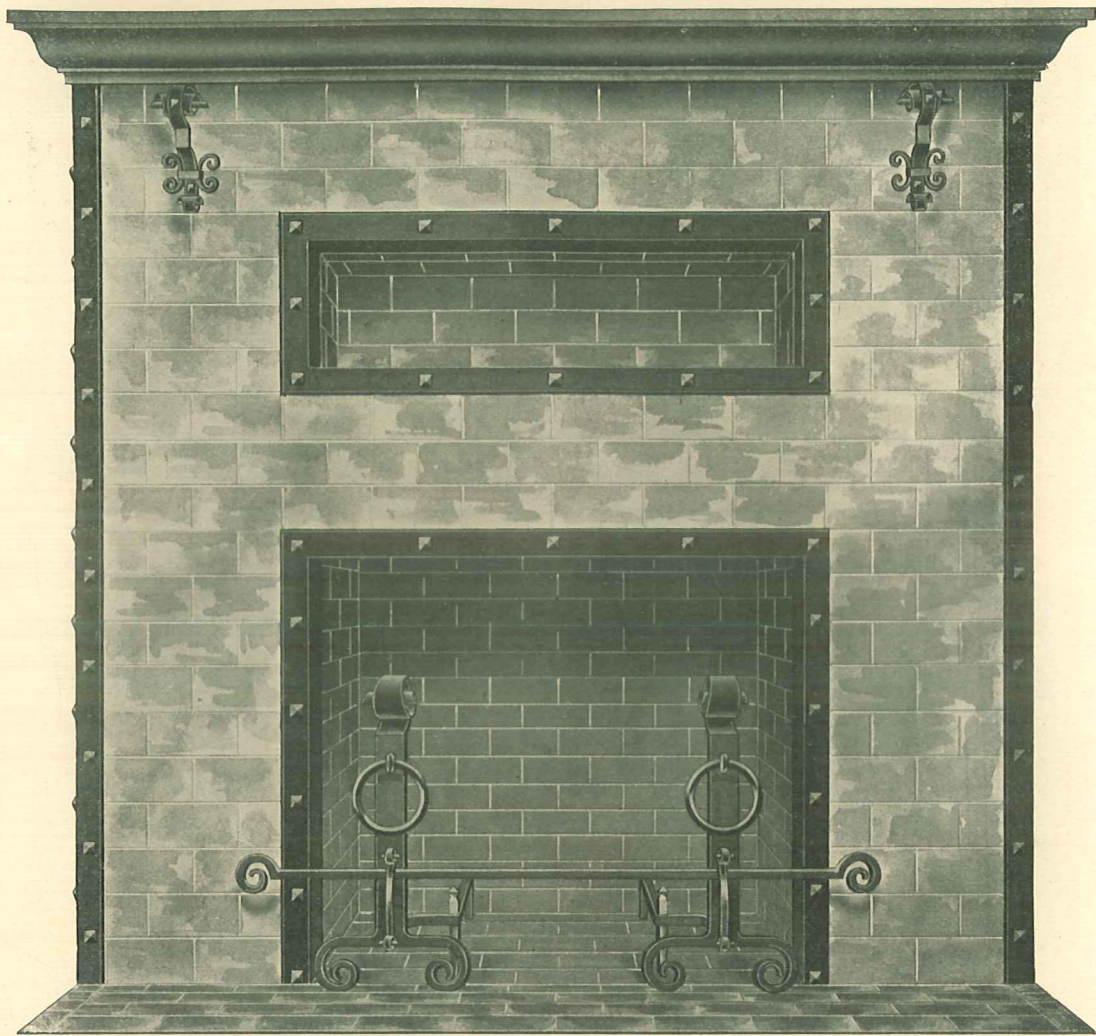
No. 1035. 24½ inches wide. 20 inch Grate.
 Made either plain dumping or shaker bottom.



No. 1051-16. 24½ inches wide. 20 inch Grate.
1051-17. 30½ inches wide. 24 inch Grate.
 Steel Summer Piece.

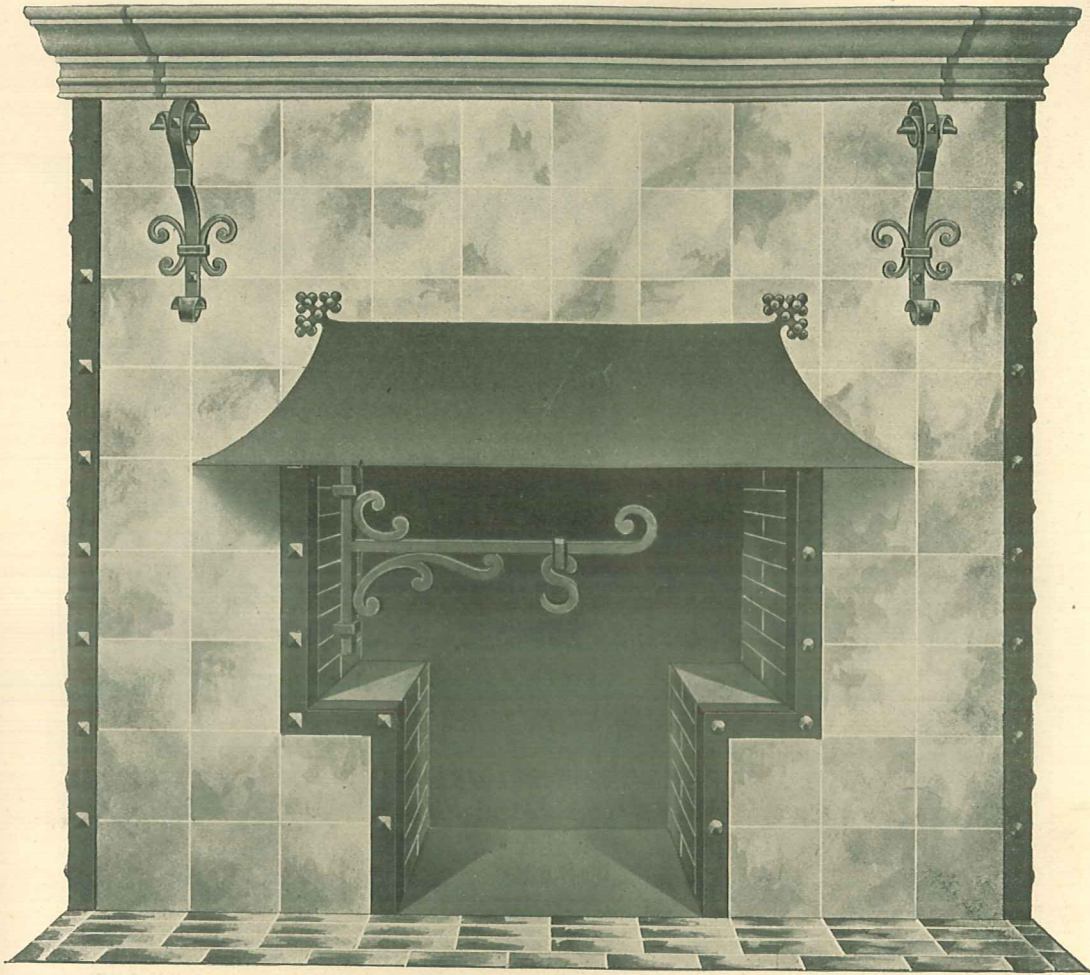


No. 1052-16. 24½ inches wide. 20 inch Grate.
1052-17. 30½ inches wide. 24 inch Grate.
 Steel Summer Piece.



No. 1251. Wrought Iron Mantel Trimmings.

Made either Plain, Square or Hammered Bolt Heads.



No. 1245. Hob Grate.

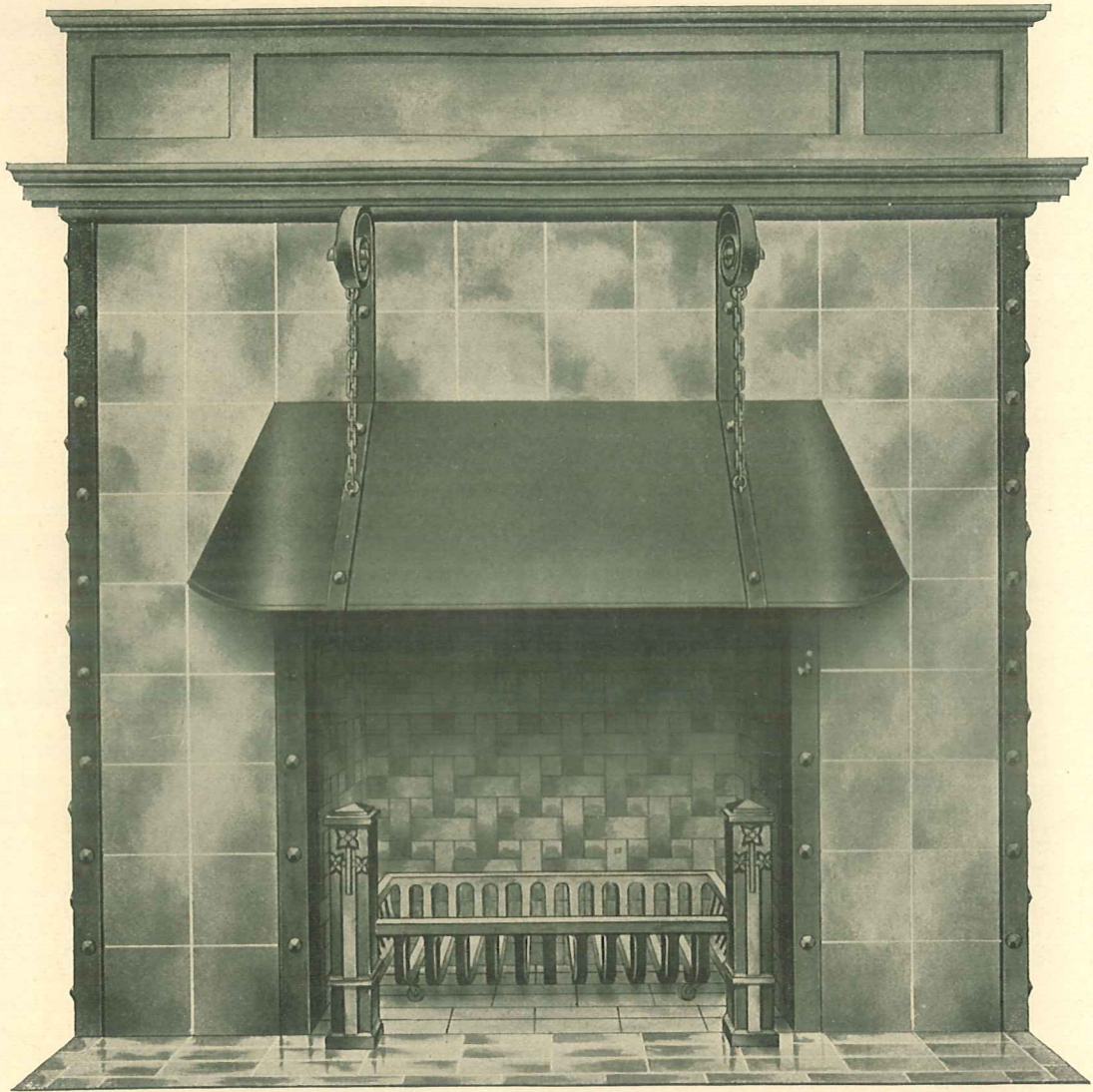
Can be used either with Andirons or Portable Basket.

Width of Frame, $36\frac{1}{2}$ inches.
 Height of Frame, $30\frac{1}{2}$ inches.
 Extreme Height, including Hood, $37\frac{1}{4}$ inches.
 Width of Hood at base, $45\frac{1}{2}$ inches.
 Projection of Hood, 7 inches.

Depth of Hood, $8\frac{1}{2}$ inches.
 Grate opening, $21\frac{1}{2}$ inches.
 From floor to top of Hob Plates, $11\frac{3}{4}$ inches.
 Width of Hob Plates, 6 inches.
 Sizes contrary to this must be specified.

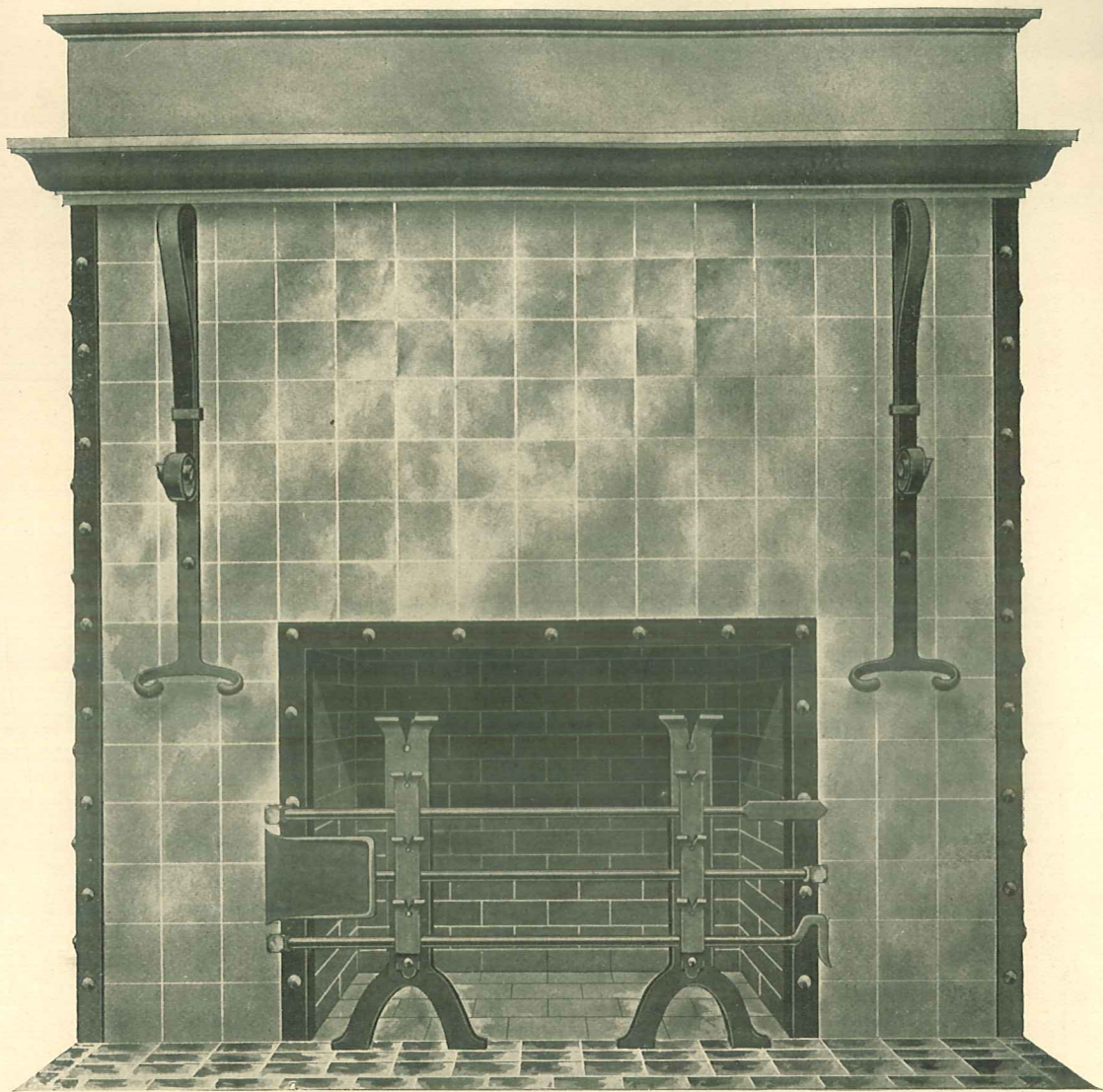
Both Square and Hammered Bolt Heads are illustrated in cut.

Hood double lined, resting on top of frame.



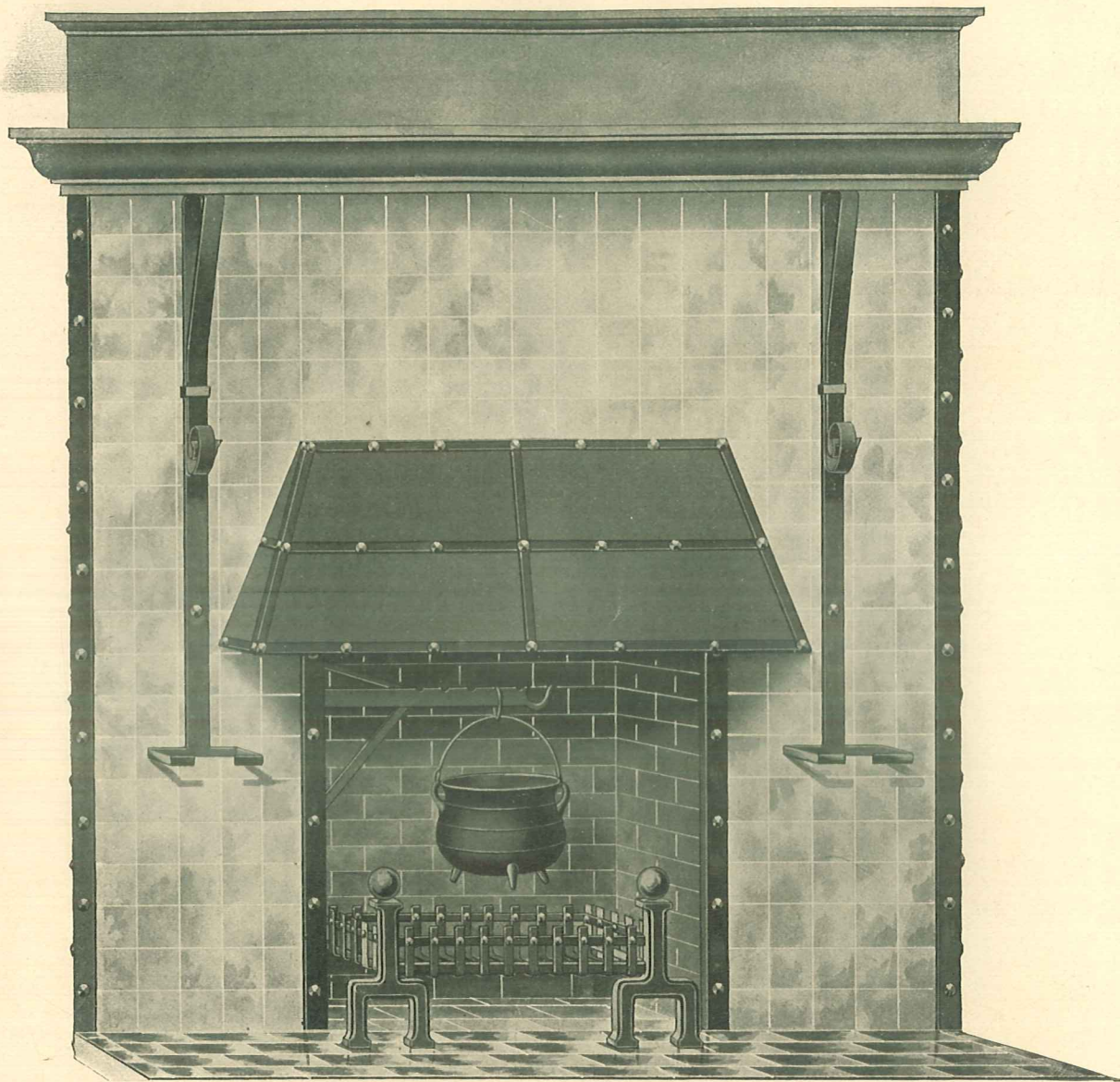
No. 1246.

Consisting of Frame, Hood, with Brackets attached, and Corner Angles.
Made either Plain or with Square or Hammered Bolt Heads.
Angles and Brackets made for 5-foot trimmings.
Length of Hood, 43 inches; width, 12 inches; depth, $7\frac{3}{4}$ inches.
Wood Basket No. 1523 (shown) is not included, and only sent when ordered.
Hood is double lined, resting on top of frame.
Special sizes to order.



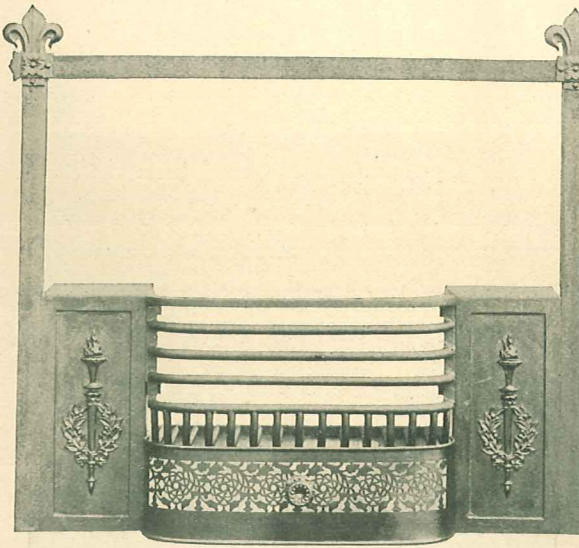
No. 1247.

Consisting of Frame, Corner Angles and Brackets.
Made either Plain, or with Square or Hammered Bolt Heads.
Corner Angles, 60 inches long.
Brackets, 34 inches long.
Andirons No. 1723 (shown) are not included.
Special sizes to order.

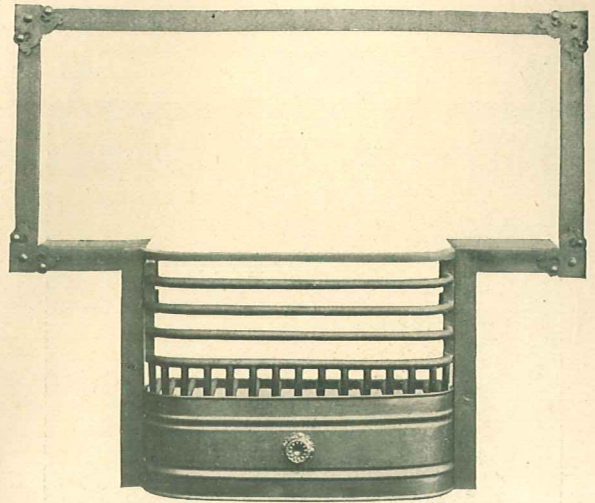


No. 1248.

Consisting of Frame, Angles, Brackets and Hood.
Made either Plain or with Square or Hammered Bolt Heads.
Brackets, 34 inches long.
Angles, 60 inches long.
Length of Hood, 43 inches; width, 16 inches; depth, 6 inches.
Hood double lined, resting on top of frame.
Wood Basket No. 1524 shown, but not included.

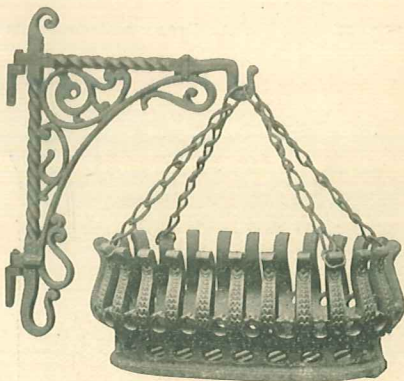


No. 1243.
 36½ inches wide, 30¼ inches high.
Black.
 Corners and Ornaments Cast Brass.
 Brass Ash Screen with Pan attached.

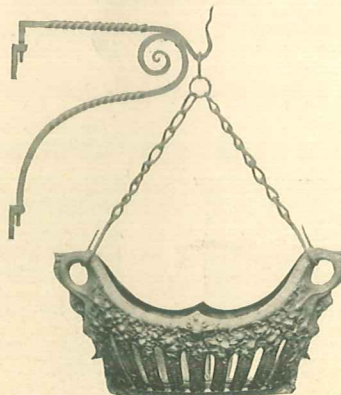


No. 1242.
 36½ inches wide, 30¼ inches high.
 30½ inches wide, 30¼ inches high.
All Black.
 Pan attached to Ash Screen.

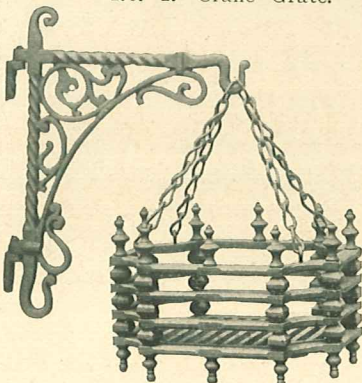
HOB GRATES.



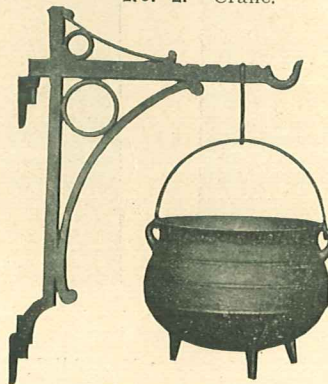
No. 1. Crane Grate.



No. 2. Crane.



No. 3. Crane Grate.

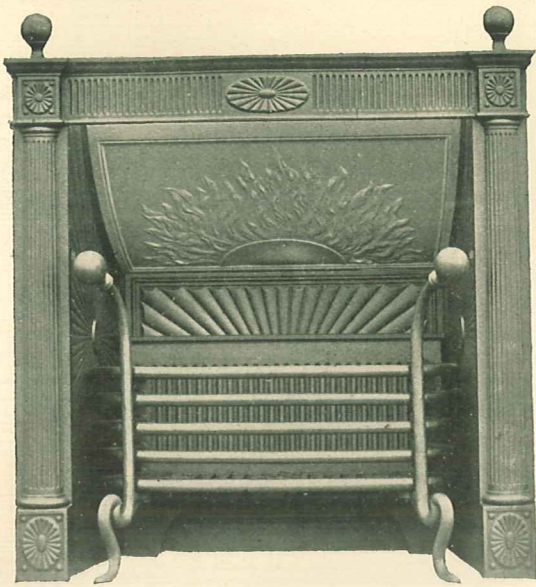


No. 4. Crane.

CRANE GRATE.

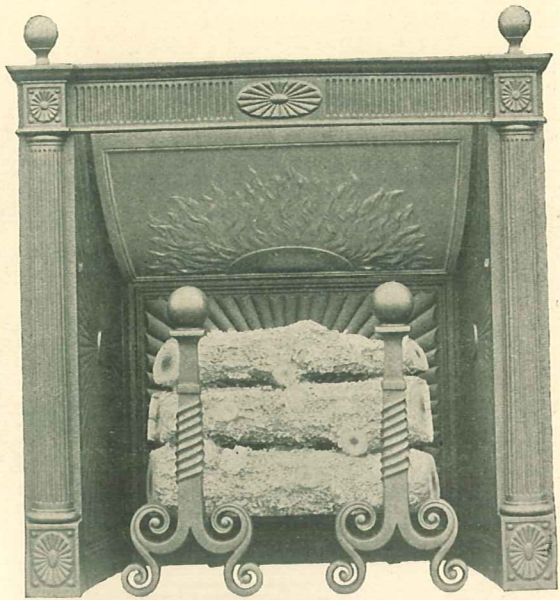
Can be used either with Brick or Iron Lined fireplaces. Baskets are interchangeable with any Crane. Made either in Black or Plated finish.

No. 1.	Crane has Basket	241.
2.	" " "	264.
3.	" " "	1506.



No. 1800.

No. 1430 Frame, 1622 Lining, 1514 Basket.



No. 1801.

No. 1430 Frame, 1622 Lining, 537 Andirons and Gas Log.



No. 1430. Frame and Summer Piece.



No. 1398. Open view.

Old Colonial or Franklin Fireplace, 30½ inches wide. All Black, with Plated Brass Columns and Brass Knobs.

COMBINATION GRATES AND FRAMES AND SUMMER PIECES.

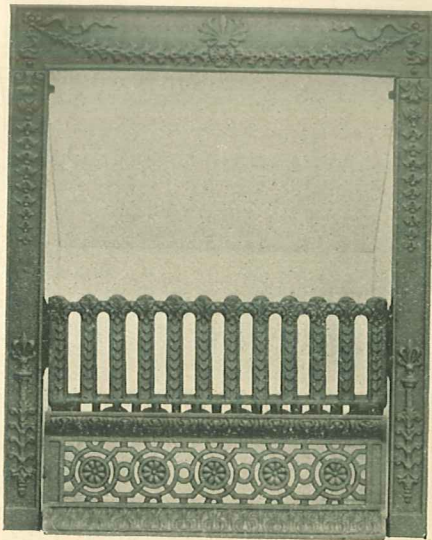
We illustrate on the following pages both of the above, giving numbers of each with the illustration. Combination Grates consist of frame, summer piece, basket and ash screen. All baskets have corrugated bottoms.

Baskets are made in two depths, 7 or 9 inch. K 7 inches deep will always be sent unless otherwise ordered.

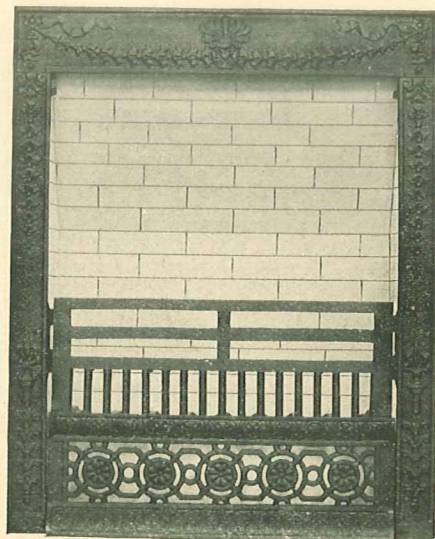
Baskets and screens are always sent in black.

Frames and summer pieces do not include any grate or basket. Club House baskets are appropriate when a grate is required.

Can be furnished in any desired plating or black finish. Oxidized copper finish always carried in stock.



"K" BASKET.
7 or 9 inches deep.
18, 20 and 24 inch.



"A" BASKET.
Extra heavy. 9 inches deep only.
20, 21½ and 24 inch.



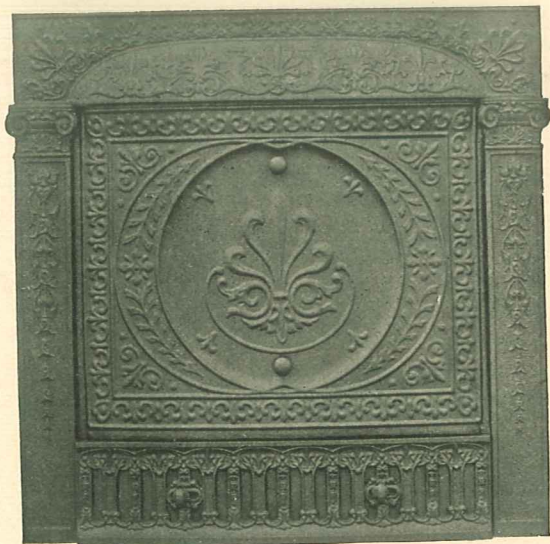
No. 1378. As Combination Grate.

1430. As Frame and Summer Piece.

30½ inches wide, 30¼ inches high. 24 inch opening.

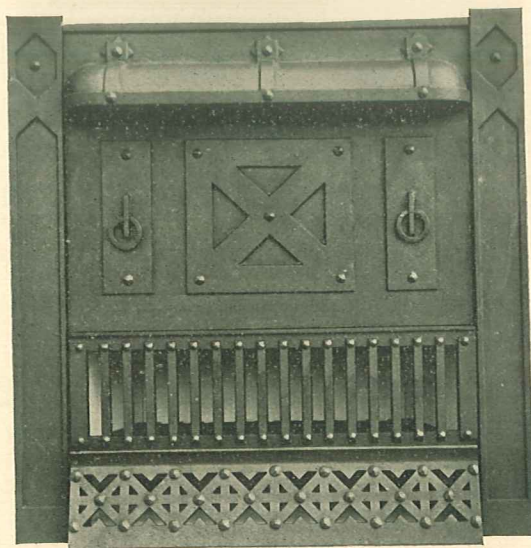


No. 1378. Open view.



No. 1350. With Stamped Steel Summer Piece.
Dumping Bottom.

24½ and 30½ inches wide.

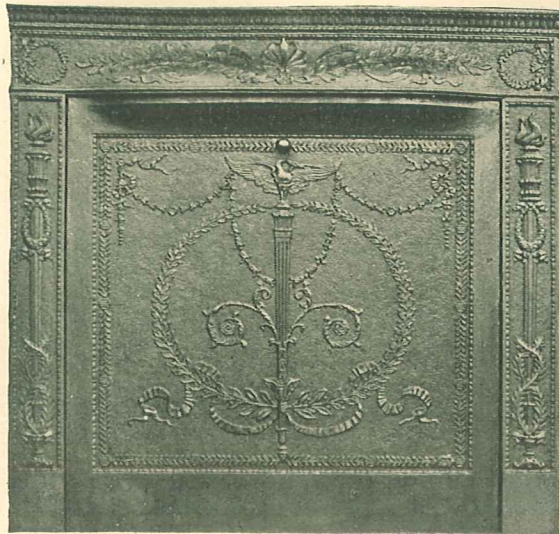


No. 1390. Combination Grate.
Dumping Bottom.

24½ and 30½ inches wide.



No. 333. Frame and Summer Piece.
 24½ and 30½ inches wide. 20 inch opening.
 Panel in Summer Piece is separate and always finished
 in Oxidized Copper. Extra plated and finish.



No. 316. Frame and Summer Piece.
 24½ and 30½ inches wide.



No. 333.
 20 inch opening.



No. 1346. As Combination Grate.
1405. As Frame and Summer Piece.
 30½ inches wide, 20 inch opening.



No. 1355. As Combination Grate.

1410. As Frame and Summer Piece.
 $30\frac{1}{2}$ inches wide, $30\frac{1}{4}$ inches high. 22 inch opening.



No. 1354. As Combination Grate.

1411. As Frame and Summer Piece.
 $30\frac{1}{2}$ inches wide, $30\frac{1}{4}$ inches high. 22 inch opening.



No. 1354A. As Combination Grate.

1411A. As Frame and Summer Piece.
 $30\frac{1}{2}$ inches wide, 22 inch opening.



No. 1354B. As Combination Grate.

1411B. As Frame and Summer Piece.
 $30\frac{1}{2}$ inches wide, 22 inch opening.



No. 1370. As Combination Grate.
1419. As Frame and Summer Piece.
 30½ inches wide. 24 inch opening.



No. 1372. As Combination Grate.
1422. As Frame and Summer Piece.
 30½ inches wide. 24 inch opening.
 24½ " " 20 " "



No. 1349. As Combination Grate.
1409. As Frame and Summer Piece.
 24½ inches wide. 20 inch opening.



No. 1357. As Combination Grate.
1414. As Frame and Summer Piece.
 24½ inches wide. 20 inch opening.



No. 1347. As Combination Grate.
1408. As Frame and Summer Piece.
 24½ inches wide. 20 inch opening.



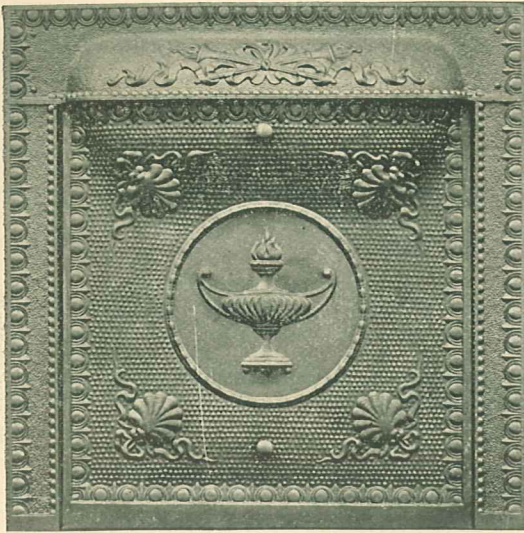
No. 1347D. As Combination Grate.
1408D. As Frame and Summer Piece.
 24½ inches wide. 20 inch opening.



No. 1359. As Combination Grate.
308. As Frame and Summer Piece.
 24½ inches wide. 20 inch opening.



No. 1369. As Combination Grate.
1418. As Frame and Summer Piece.
 24½ inches wide.



No. 1367. As Combination Grate.
1478. As Frame and Summer Piece.
 Stamped Steel Summer Piece.
 30½ inches wide. 24 inch opening.
 24½ inches wide. 20 inch opening.



No. 1381. As Combination Grate.
1482. As Frame and Summer Piece.
 Stamped Steel Summer Piece.
 30½ inches wide. 24 inch opening.
 24½ inches wide. 20 inch opening.



No. 1363. 30 inches wide, as Combination Grate.
1366. 24 inches wide, as Combination Grate.
1468. 30 inches wide, as Frame and Summer Piece.
1477. 24 inches wide, as Frame and Summer Piece.



No. 1384. As Combination Grate.
1484. As Frame and Summer Piece.
 30½ inches wide. 24 inch opening.
 24½ inches wide. 20 inch opening.



No. 1386. As Combination Grate.
1486. As Frame and Summer Piece,
 24½ inches wide.
 Stamped Steel Summer Piece.



No. 1380. As Combination Grate.
1481. As Frame and Summer Piece,
 24½ inches wide.
 Stamped Steel Summer Piece.



No. 1387. As Combination Grate.
1487. As Frame and Summer Piece,
 24½ inches wide.
 Stamped Steel Summer Piece.



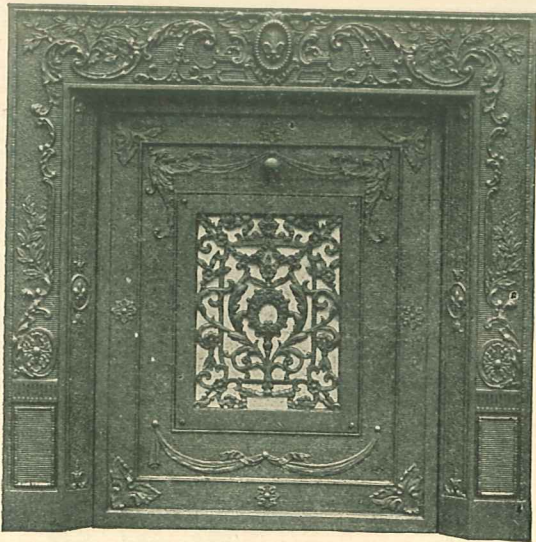
No. 1389. As Combination Grate.
1489. As Frame and Summer Piece,
 24½ inches wide.
 Stamped Steel Summer Piece.



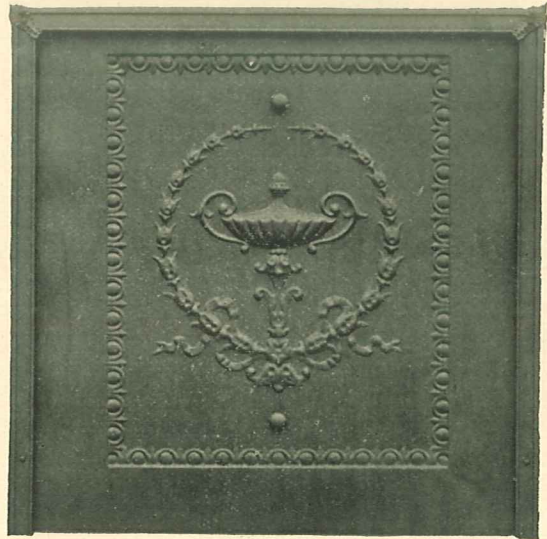
No. 1464. Frame and Summer Piece.
24½ inches wide, 30¾ inches high. 20 inch opening.
Stamped Steel Summer Piece.



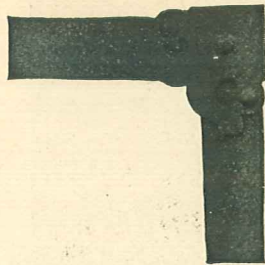
No. 1417. Frame and Summer Piece.
24½ inches high. 20 inch opening.



No. 329. 30½ inches wide; 9x12 or 9x14 inch register.
1429. Hooded Frame, 24½ inches wide; 9x12 inch register only.



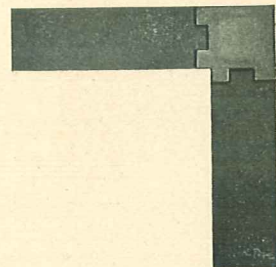
No. 1479. Frame and Summer Piece, 27½ inch opening.
This Summer Piece can be made any desired size from 20 to 28 inches wide, 30 inches high.



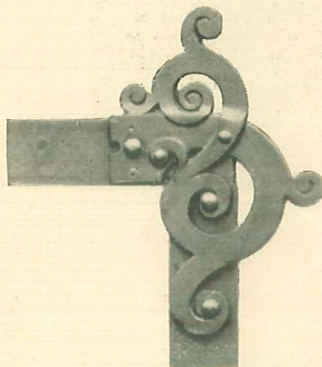
No. 1203. 1 1/8 and 1 1/2 inch.



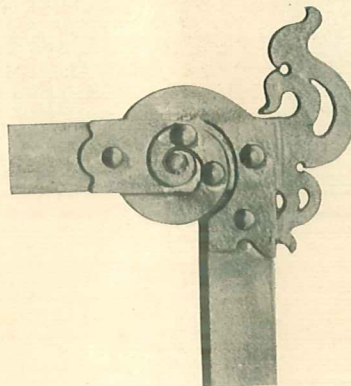
No. 1201. 2 inch.



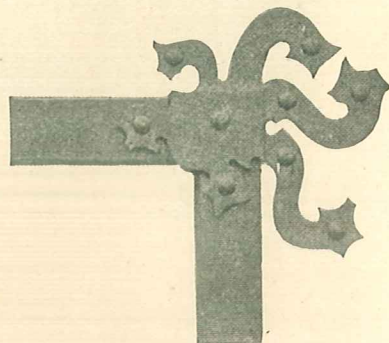
No. 1235. 1 1/2 inch.



No. 1229. 1 1/2 inch.

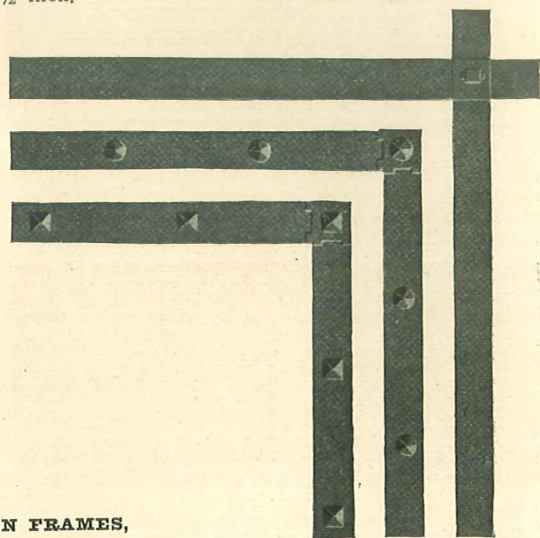


No. 1231. 1 1/2 inch.



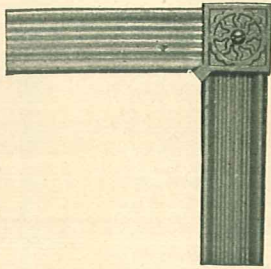
No. 1220. 1 1/2 inch.

- A. With Square Bolt Heads.
 - B. With Hammered Bolt Heads.
- These bolt heads can be adapted to any frame.
- C. No. 1238, Mission Style.

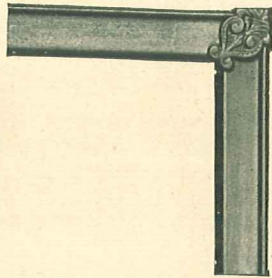


A. B. C.

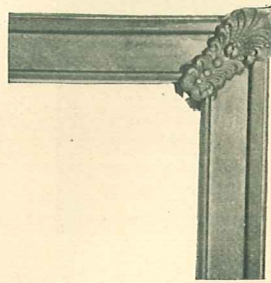
**WROUGHT IRON FRAMES,
With Malleable Corners.**



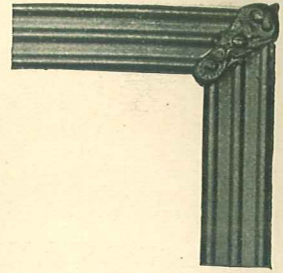
No. 421.
1, 1½ and 2 inch.



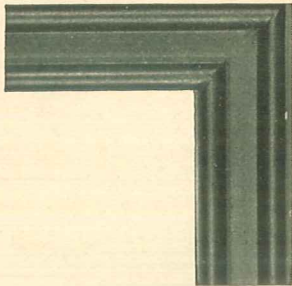
No. 493.
1 inch.



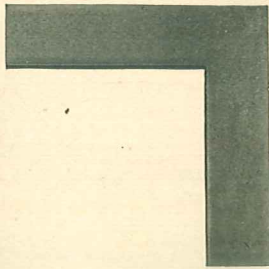
No. 700.
1½ inch.



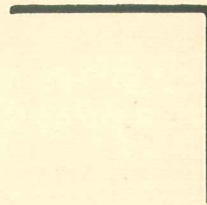
No. 701.
1½ inch.



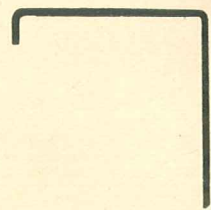
No. 768.
1¼ inch.



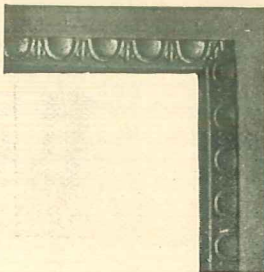
No. 494.
½ to 1½ inch.
Heavy or Light.



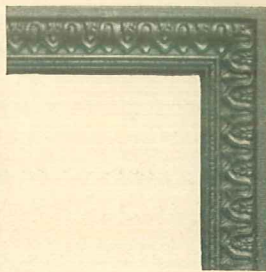
Sectional view of No. 494.



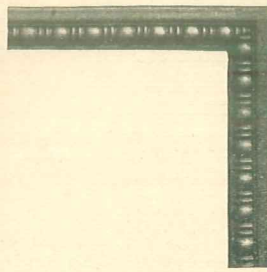
Sectional view of No. 495.



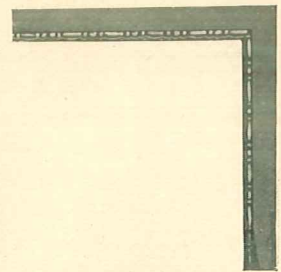
No. 764.
1½ inch.



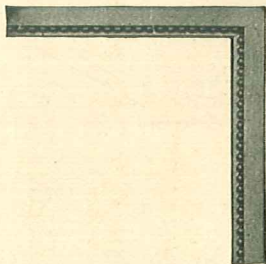
No. 771.
1½ inch.



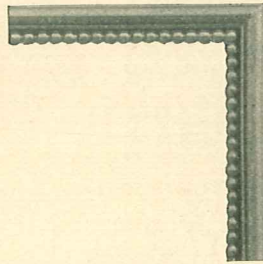
No. 772.
1 inch.



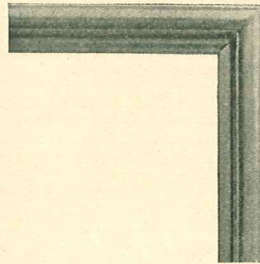
No. 762.
¾ inch.



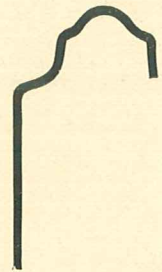
No. 763.
¾ inch.



No. 742.
¾ inch.

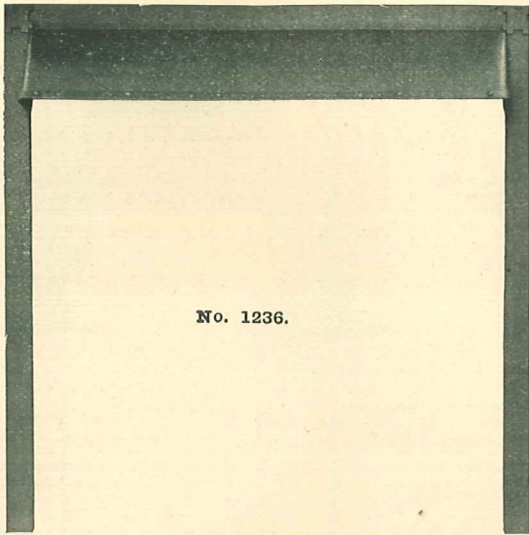


No. 749.
¾ inch.

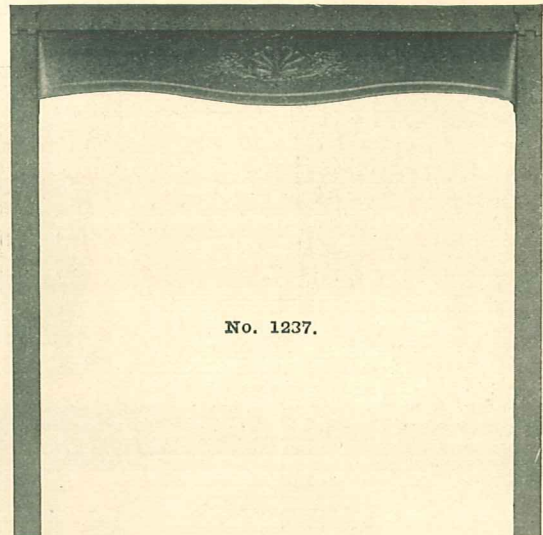


Sectional view, full size of
molding used in Nos.
741 to 749.
Extra Heavy.

WROUGHT BRASS FRAMES.

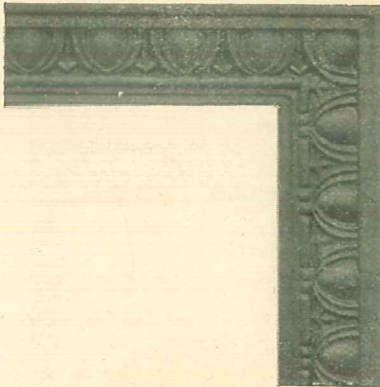


No. 1236.

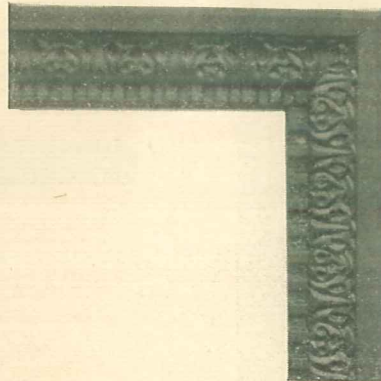


No. 1237.

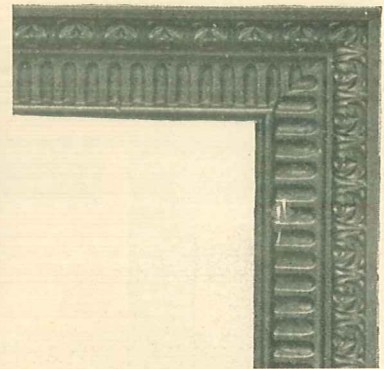
FRAMES WITH HOOD.
Either in Brass or Iron.



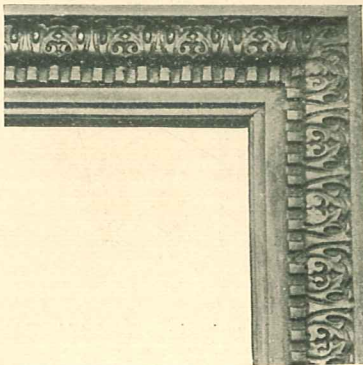
No. 760. 1½ inch.



No. 761. 1½ inch.



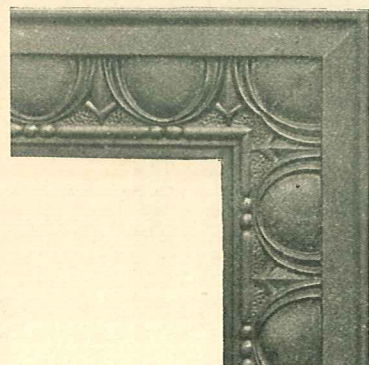
No. 731. 2 inch.



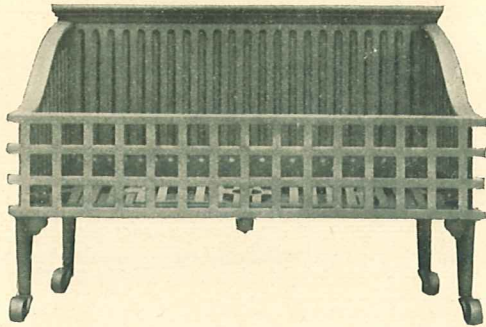
No. 730. 2 inch.



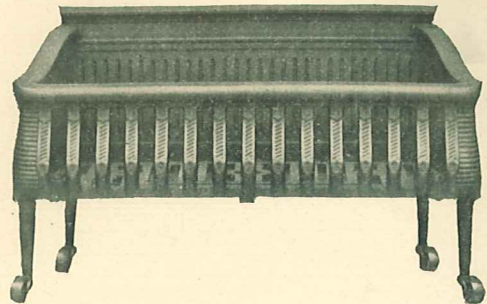
No. 736. 1½ inch.
CAST BRASS FRAMES.



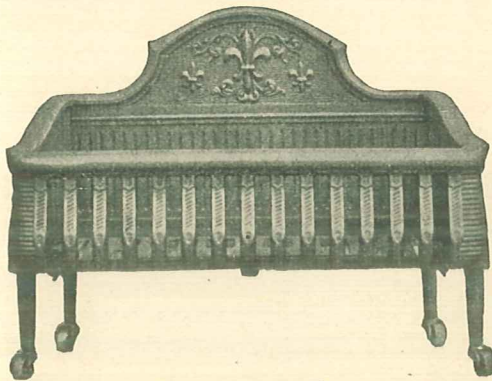
No. 726. 2½ inch.



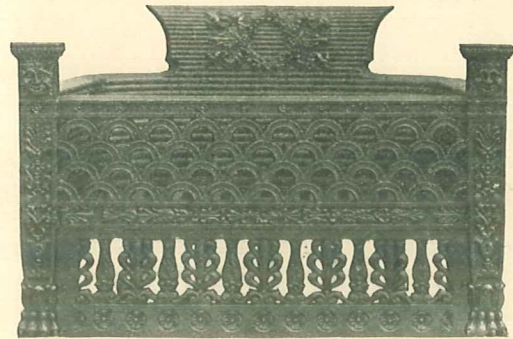
No. 1515. 18, 20, 22 and 24 inches. 11½ inches deep.



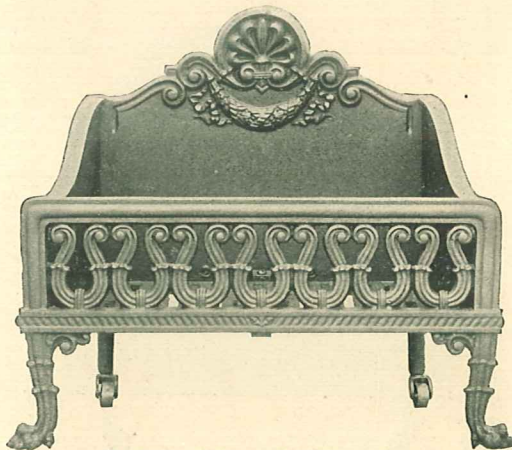
No. 1531. 16, 18, 22 and 24 inches. 12½ inches deep.



No. 1504. 16 and 36 inches.



No. 296. 20½, 23 and 25 inches.



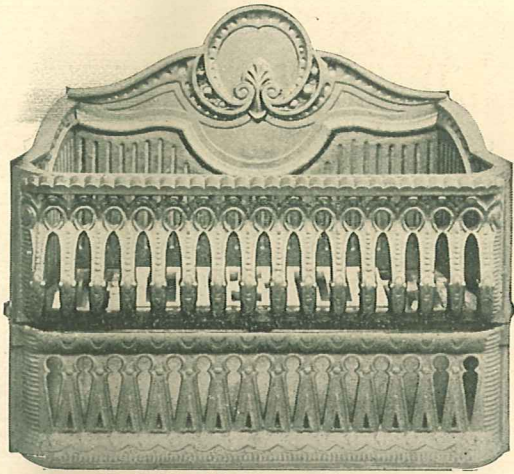
No. 298. 21¾ and 25¼ inches.



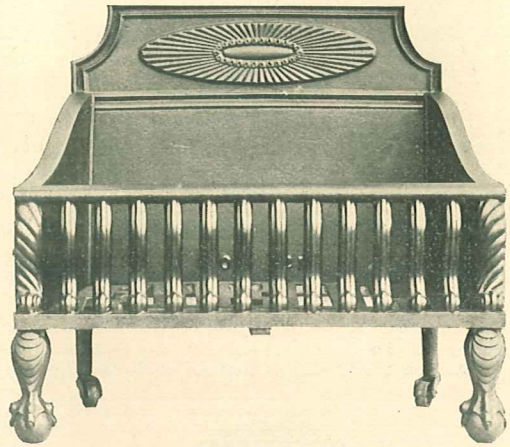
No. 237. 20½, 23 and 25 inches.

PORTABLE BASKETS.

Ash Screens are extra and only sent when ordered.
Nos. 1504 and 1531 take Ash Screen as shown in No. 1503.



No. 1503. 20, 22 and 24 inches.



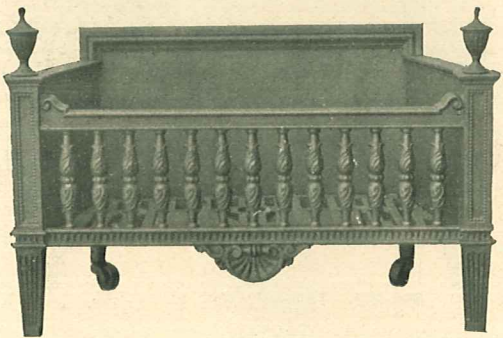
No. 1505. 18½, 21½ and 24½ inches.



No. 297. 21 and 24 inches.



No. 1507. 24½ inch front. 12¾ inches deep.



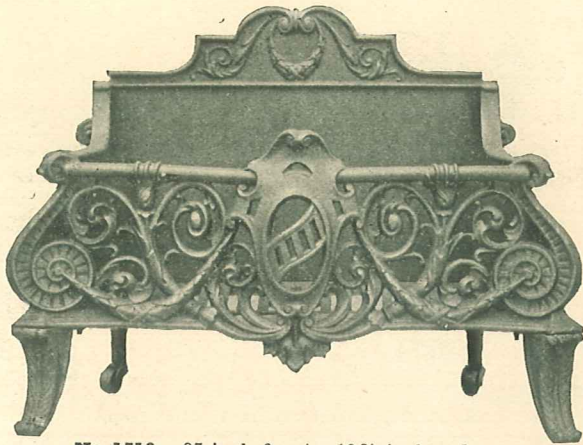
No. 1513. Low Back. 24¼x13½ inches.



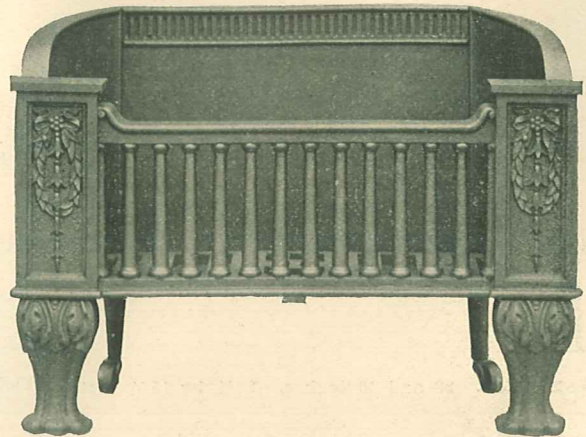
No. 299. 20 and 24¾ inches.

PORTABLE BASKETS.

Ash Screens are extra and only sent when ordered.



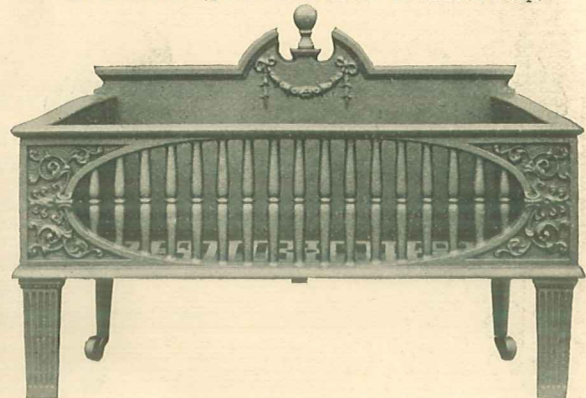
No. 1510. 27 inch front. 13 3/4 inches deep.



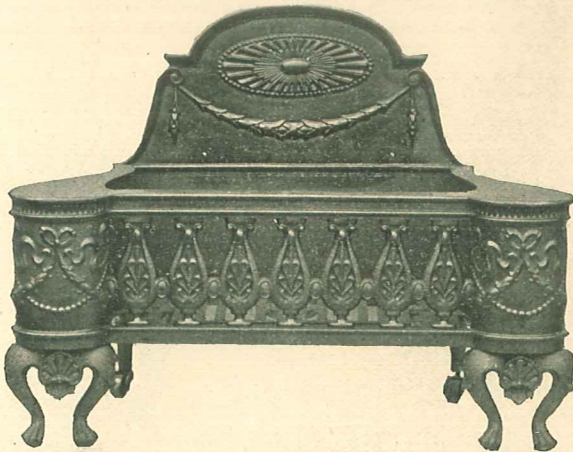
No. 1518. 23 1/2 and 27 inches. 12 inches deep.



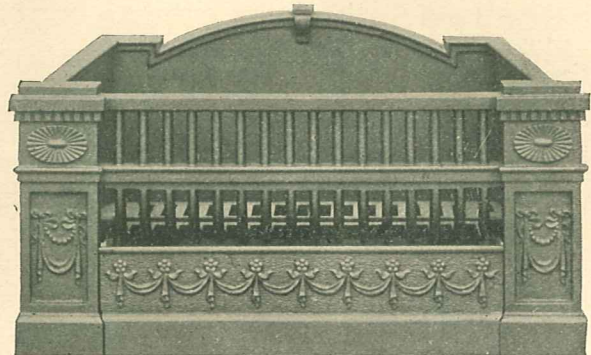
No. 1517. 23 1/2 and 27 inches. 13 inches deep.



No. 1519. 24 and 28 inches. 13 inches deep.



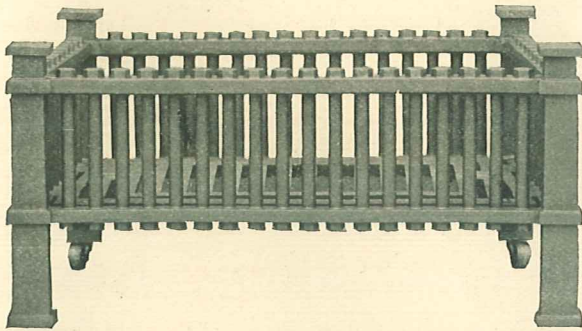
No. 1509. 26 3/4 inch front. 14 1/2 inches deep.



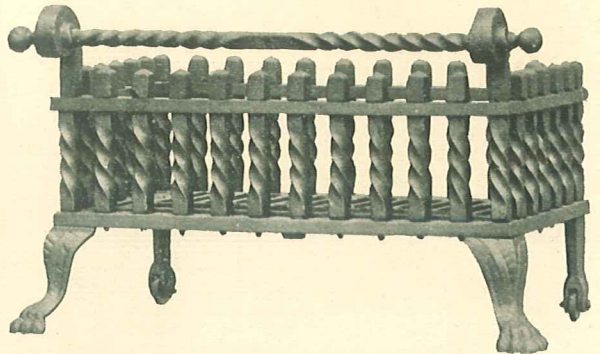
No. 1516. 24 and 26 inches. 13 inches deep.
Screen included.

PORTABLE BASKETS.

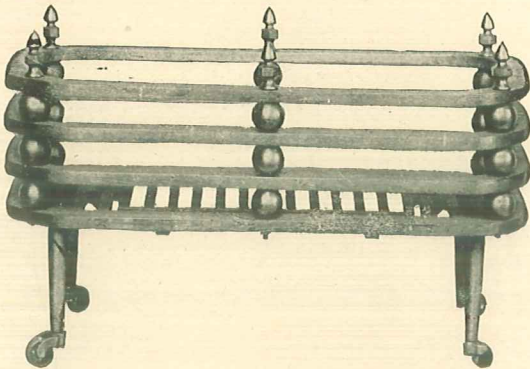
Ash Screens are extra and only sent when ordered.



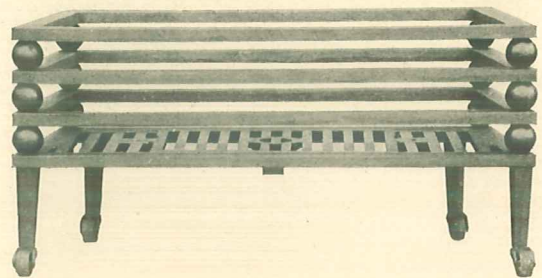
No. 1532. 23 and 13 inches. 26½ by 15½ inches.



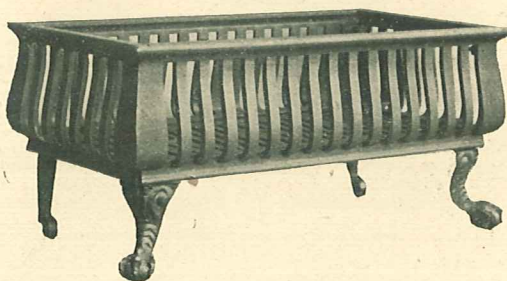
No. 210. 18 and 20 inches. 11 inches deep.
23, 26, 30 and 36 by 13 inches deep.



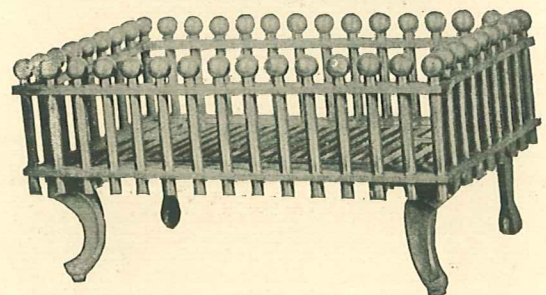
No. 1502. 20, 22, 24, 27 and 30 inches.



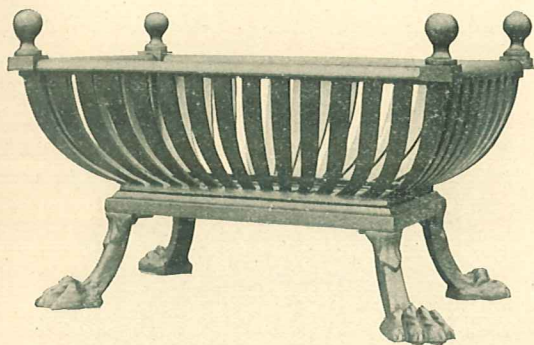
No. 1530. 22 and 24 by 12 inches deep.
27, 30 and 36 inches by 14 inches deep.



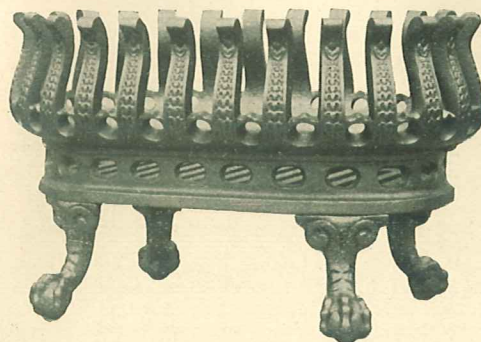
No. 1534. 22, 24 and 27 inches.



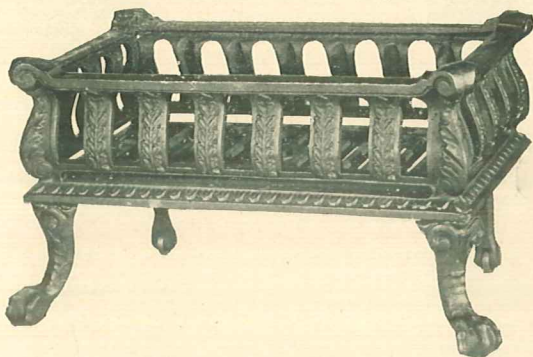
No. 242. 21, 24 and 30 inches. 14½ inches deep.
21 and 24 inches. 9 inches deep.
Made in Black only, but can be furnished with Solid
Brass Knobs.



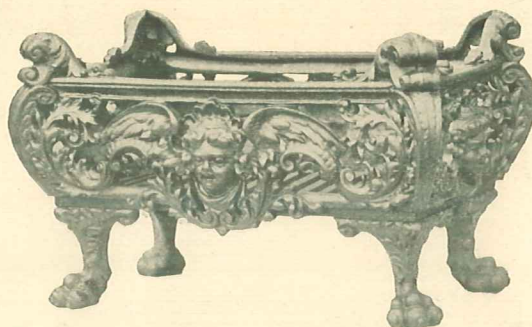
No. 213. 23 by 15 inches. Plated inside and outside.



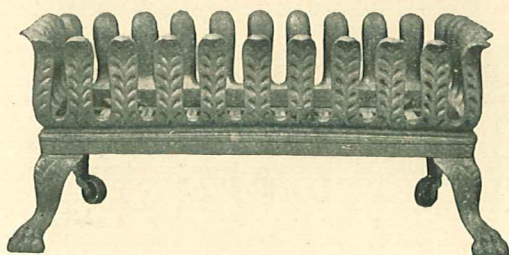
No. 241. 21, 24 and 30 inches. Plated inside and outside.



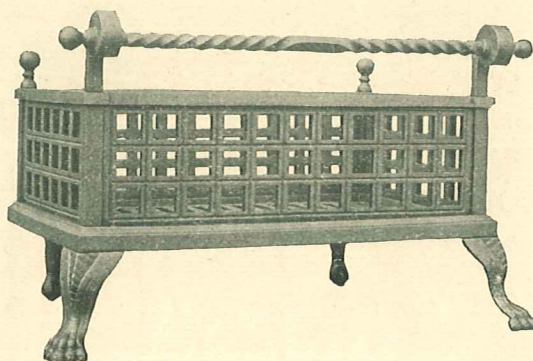
No. 236. 20½ and 24 inches.



No. 238. 23½ inches.



No. 215. 20, 22½ and 27 inches.



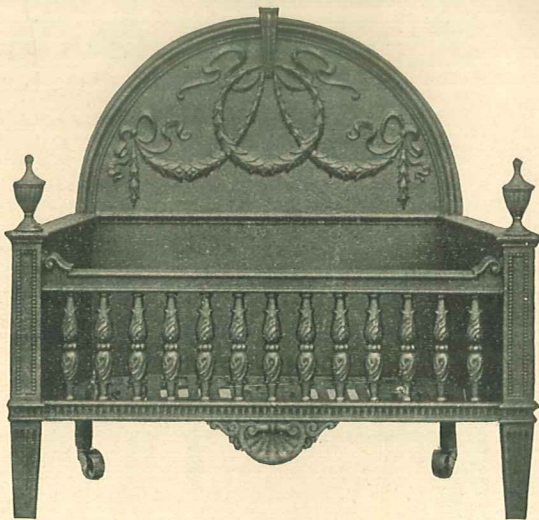
No. 218. 16, 19, 21½ and 23 inches.



No. 1500. 26½, 30¾ and 36½ inches. 14 inches deep.



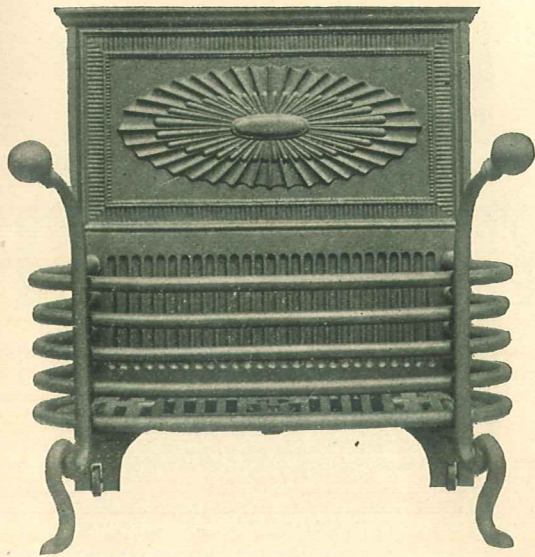
No. 244. 24 and 27 inch front. 14 inches deep.



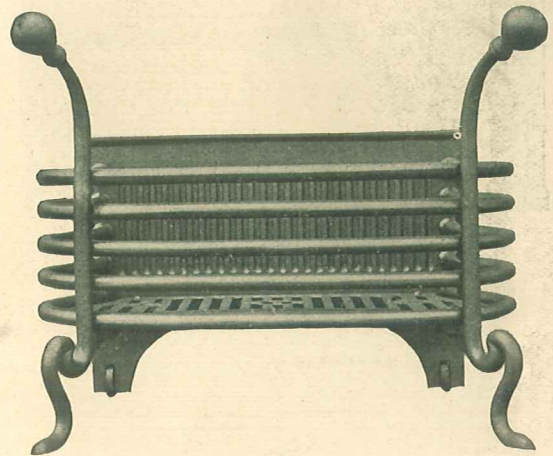
No. 1501. 24½ inch front. 13 inches deep.



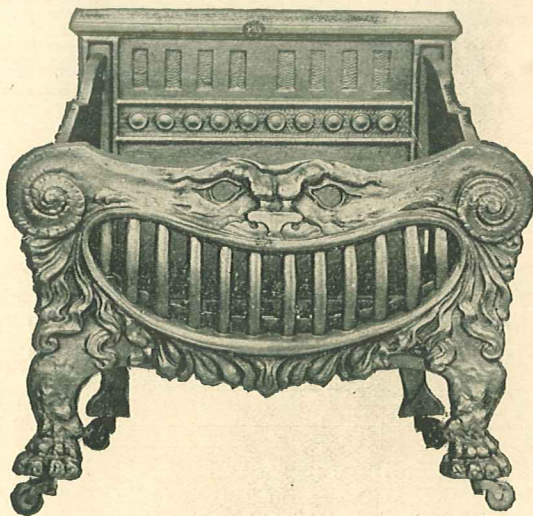
No. 269. 20, 22, 24 and 26 inches.



No. 1508. 23½ by 12¾ inches. Back 25 inches high.
Standards either all Iron or with Brass Balls.



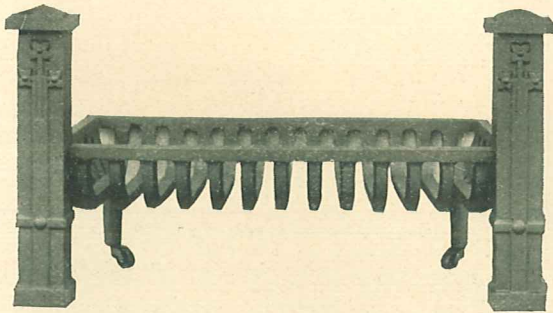
No. 1514. 23½ inches.



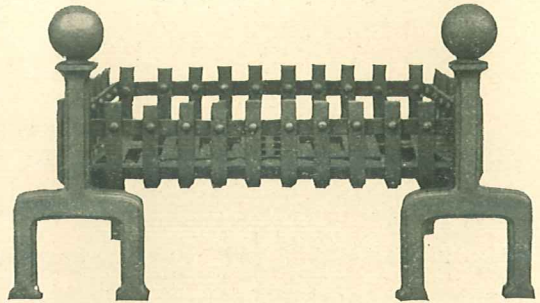
No. 262. 20, 22, 24 and 26 inch.



No. 214. 24, 30 and 32 inches.
Screen included.

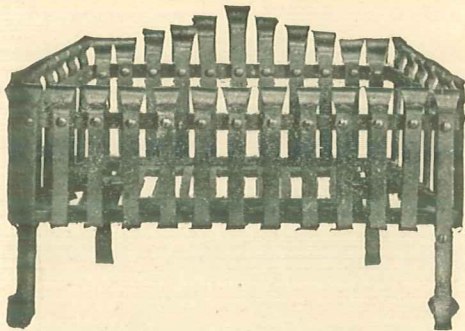


No. 1523. 27½ and 29 inches wide.
Andirons included.

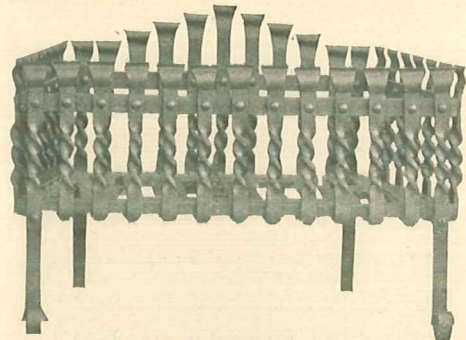


No. 1524. 20 to 36 inches wide.
Andirons not included.

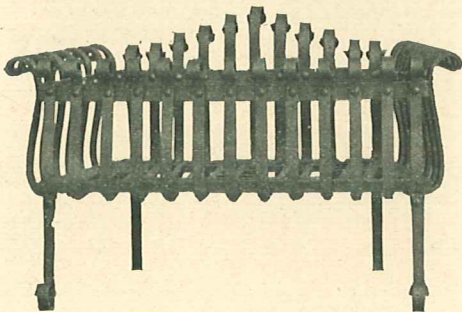
WOOD BASKETS.



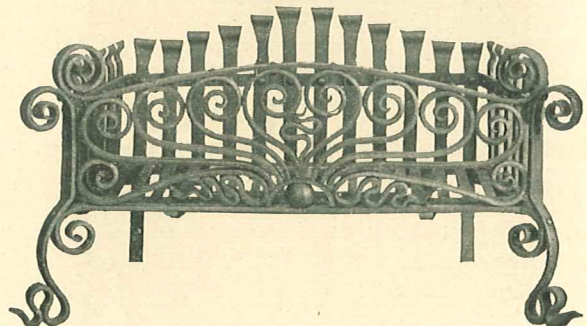
No. 291. 20 to 30 inches.



No. 1520. 20 to 24 inches.

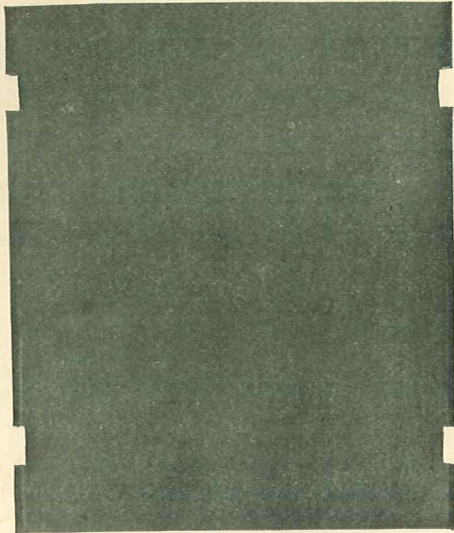


No. 1521. 20 to 24 inches.

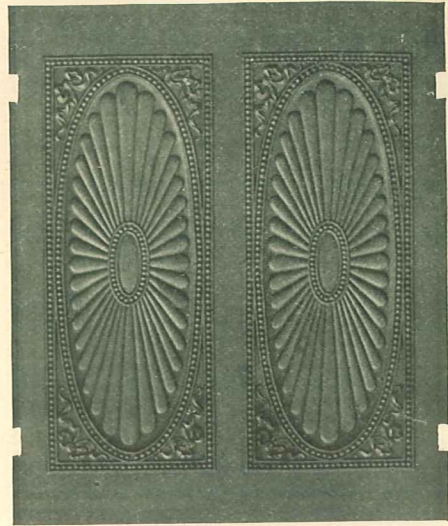


No. 293. 24 to 33 inches. 13 inches deep.

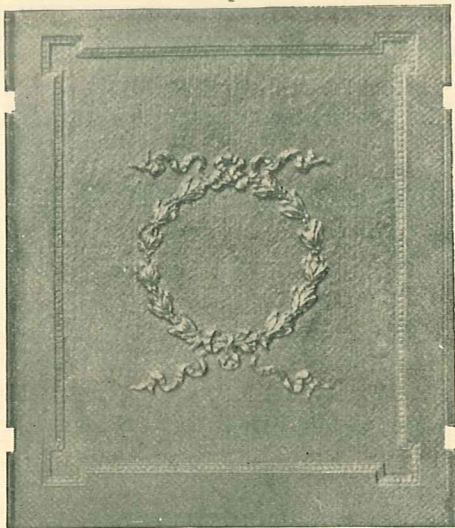
WROUGHT IRON PORTABLE BASKETS.



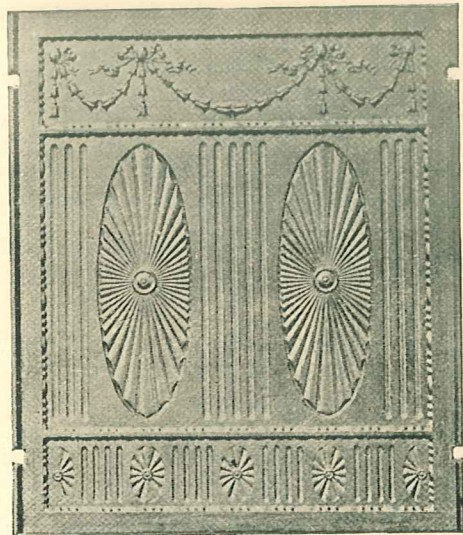
No. 1.
20 to 40 inch backs.
12 to 20 inch sides.



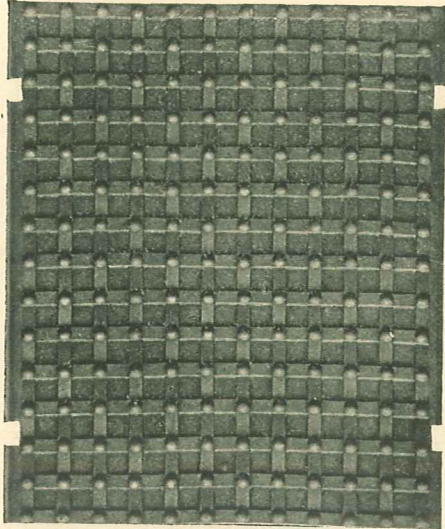
No. 100.
22 and 27 inch backs.
15 and 18 inch sides.



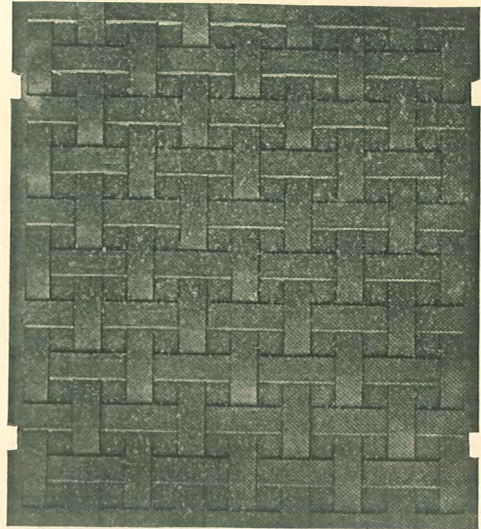
No. 39.
20, 24, 27 and 30 inch backs.
12, 15 and 18 inch sides.
Medium.



No. 40.
24, 27 and 30 inch backs.
12, 15 and 18 inch sides.
Heavy.



No. 35.
20, 24, 27, 30 and 36 inch backs.
12, 15, 18 and 20 inch sides.
Extra heavy.



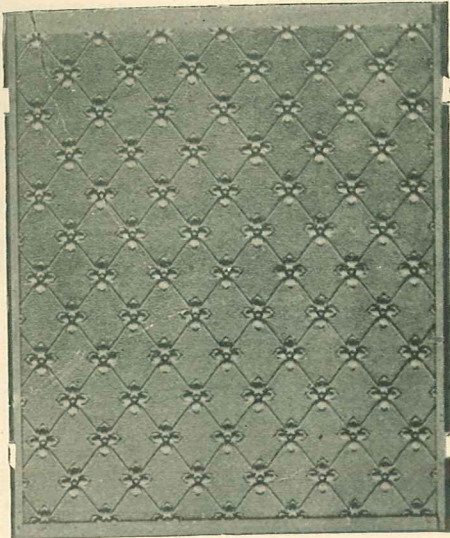
No. 36.
20, 24, 27, 30 and 36 inch backs.
12, 15, 18, 20 and 24 inch sides.
Extra heavy.



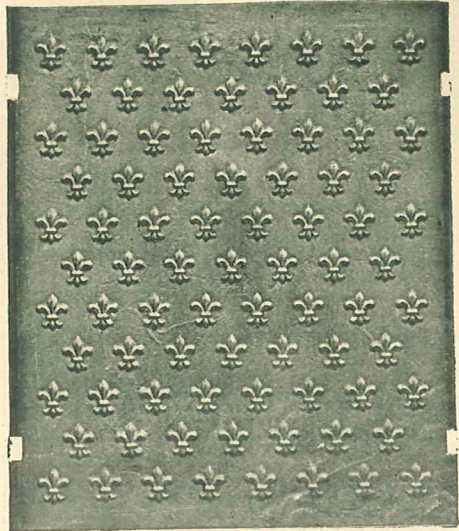
No. 52.
24 and 28 inch backs.
15 and 18 inch sides.



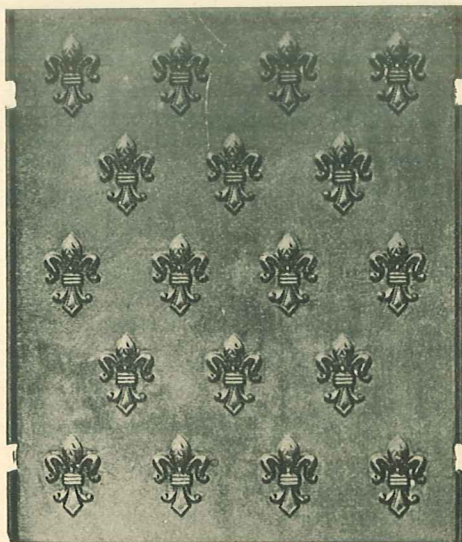
No. 60.
20, 24, 27 and 30 inch backs.
12, 15, 18 and 20 inch sides.



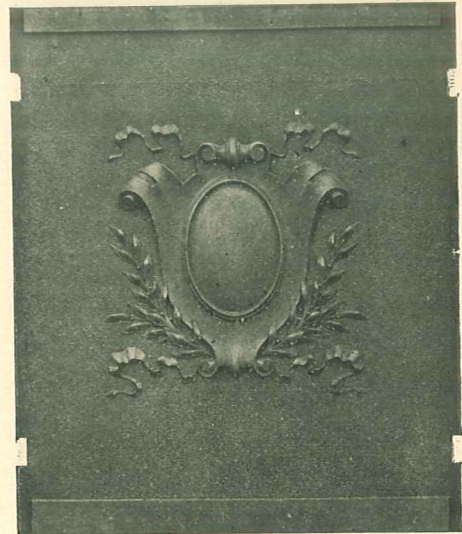
No. 63.
20, 22, 24, 27, 30 and 36 inch backs.
12, 15 and 18 inch sides.



No. 42. Extra heavy.
88. Light.
20, 22, 24, 27, 30 and 36 inch backs.



No. 66.
20, 24, 27, 30 and 36 inch backs.
12, 15, 18 and 20 inch sides.
Extra heavy.



No. 80.
20, 24, 27 and 30 inch backs.
12, 15 and 18 inch sides.
Medium weight.



No. 1621.
24 inch backs.
12, 15 and 18 inch sides.
Heavy weight.



No. 75.
24 and 27 inch backs.
12, 15, 18 and 20 inch sides.
Heavy.



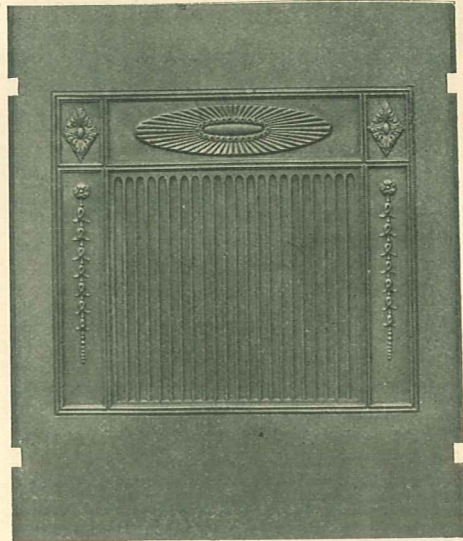
No. 89.
20 and 24 inch backs.
12, 15 and 18 inch sides.
Light weight.



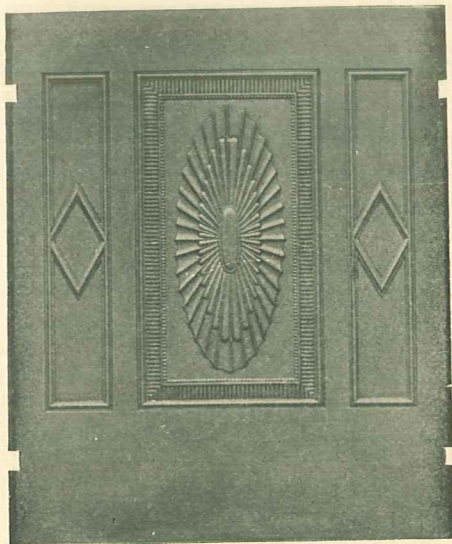
No. 90.
20, 24 and 30 inch backs.
12, 15 and 18 inch sides.
Light weight.



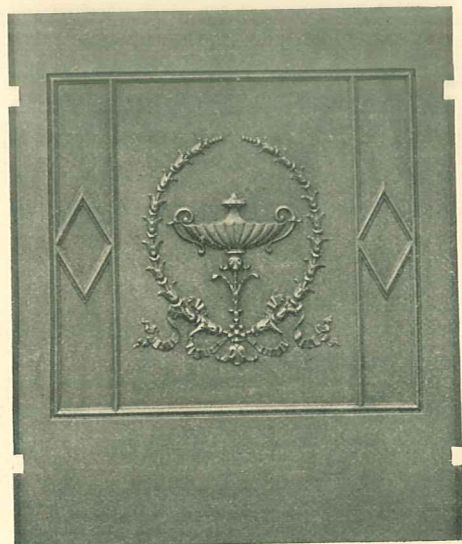
No. 95.
 20, 22, 24 and 30 inch backs.
 12, 15, 18 and 20 inch sides.



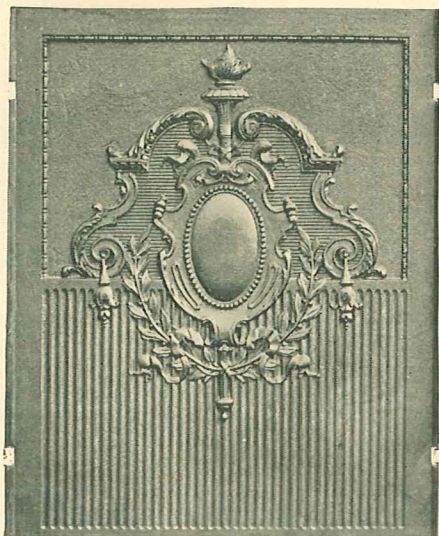
No. 91.
 24, 27 and 30 inch backs.
 12, 15 and 18 inch sides.
 Light weight.



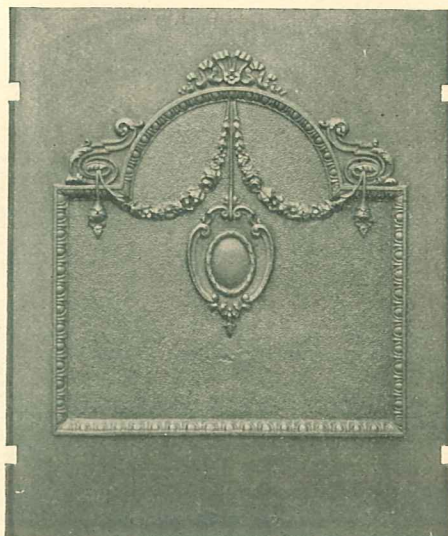
No. 92.
 24, 27 and 30 inch backs.
 12, 15 and 18 inch sides.
 Light weight.



No. 93.
 20, 24, 27 and 30 inch backs.
 12, 15 and 18 inch sides.
 Light weight.



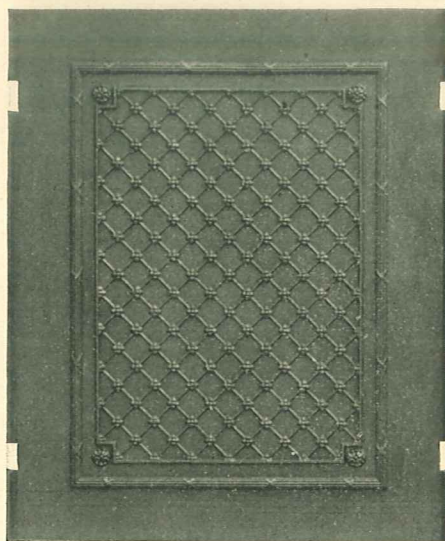
No. 72.
24, 27 and 30 inch backs.
12, 15, 18 and 20 inch sides.
Heavy.



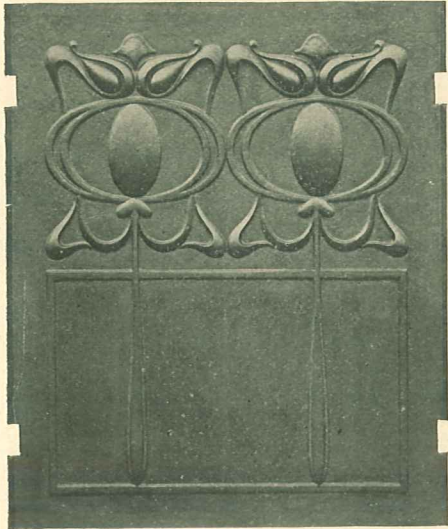
No. 94.
24, 27 and 30 inch backs.
12, 15 and 18 inch sides.
Medium weight.



No. 96.
24, 27 and 30 inch backs.
12, 15 and 18 inch sides.



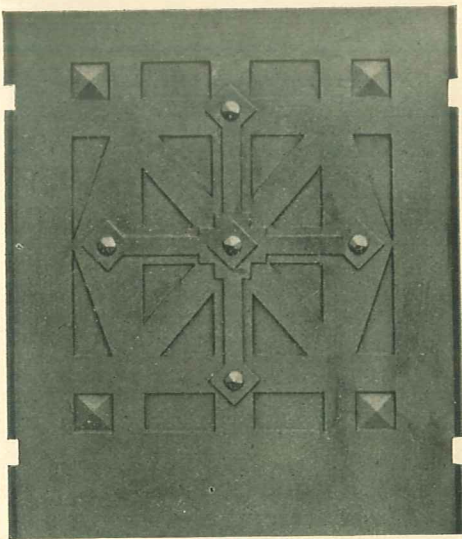
No. 1623.
20, 22 and 24 inch backs.
12, 15 and 18 inch sides.



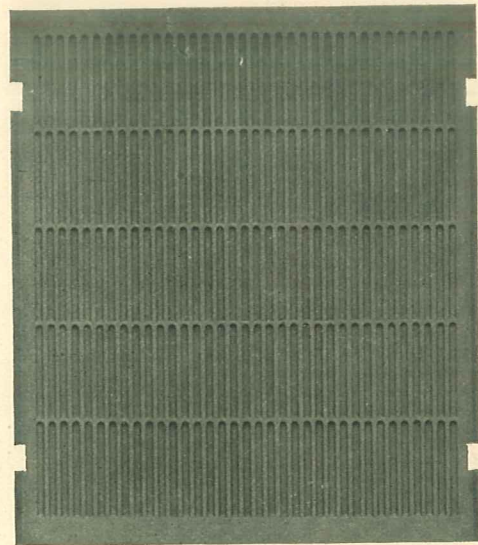
No. 1617.
24 inch back.
12, 15 and 18 inch sides.



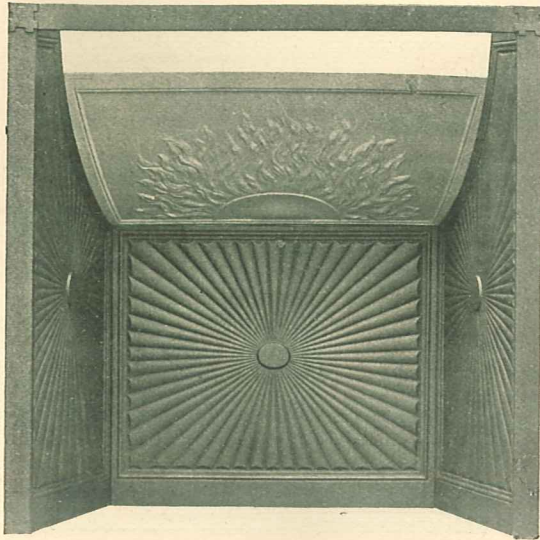
No. 1618.
24 inch back.
12, 15 and 18 inch sides.



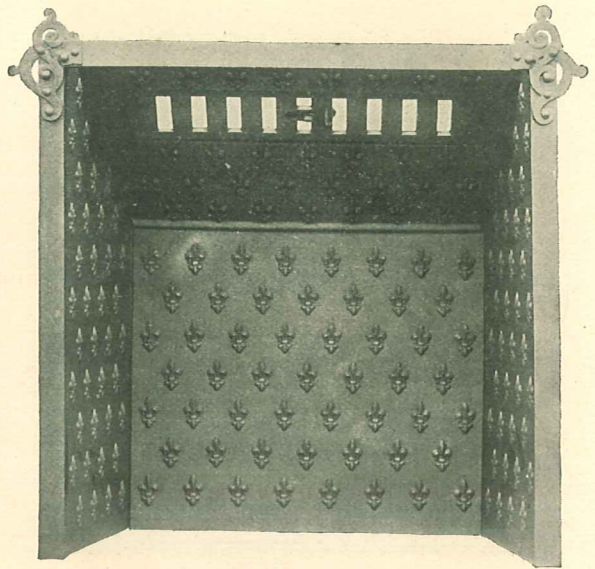
No. 1625.
24 inch back.
12, 15 and 18 inch sides.



No. 1626.
24 inch back.
15 and 18 inch sides.



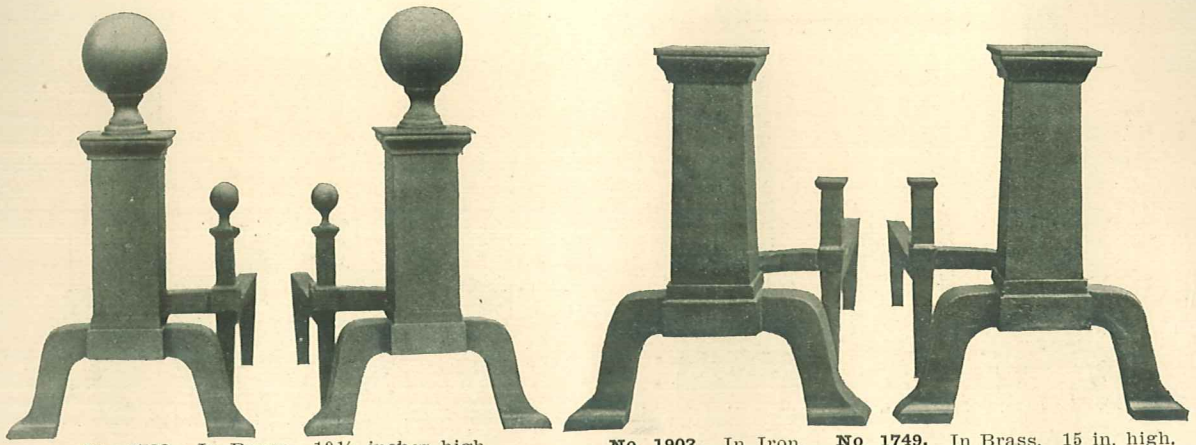
No. 1622.
Franklin Back.
For openings 30 by 30.



No. 1619.
Slope back with damper.
24 inch back with 15 inch side.

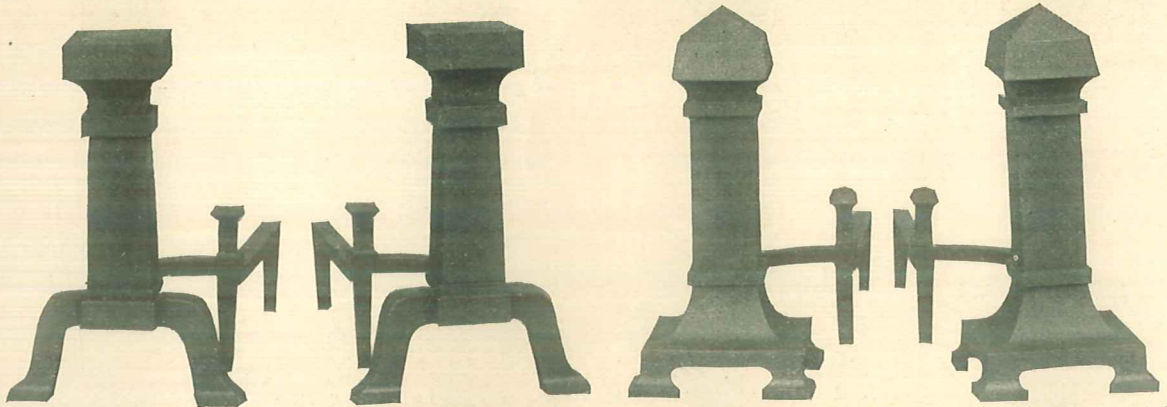


No. 1616.
36½ inches wide, 30 inches high.
Very heavy.



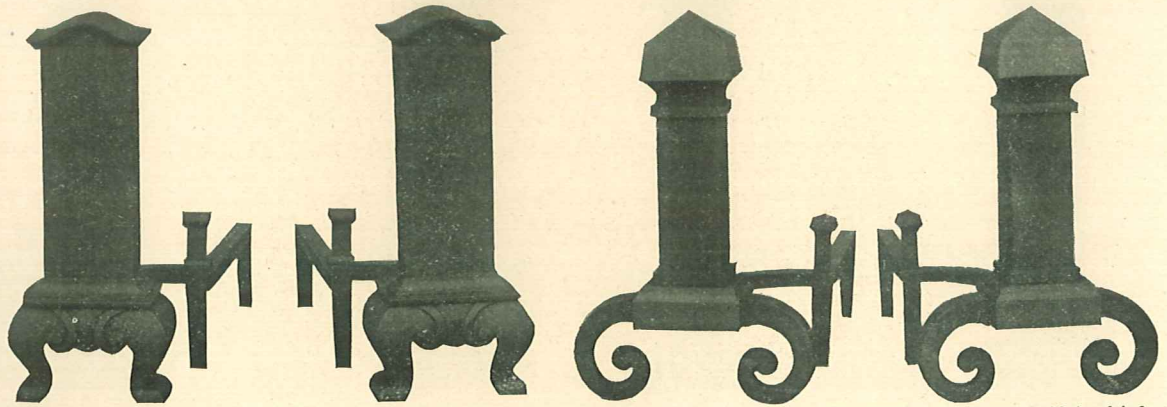
No. 1730. In Brass. 19½ inches high.

No. 1903. In Iron. No. 1749. In Brass. 15 in. high.



No. 1756. In Iron. No. 1746. In Brass. 17½ in. high.

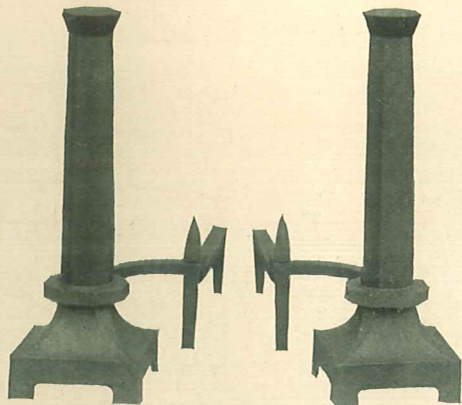
No. 1757. In Iron. No. 1743. In Brass. 18¼ in. high.



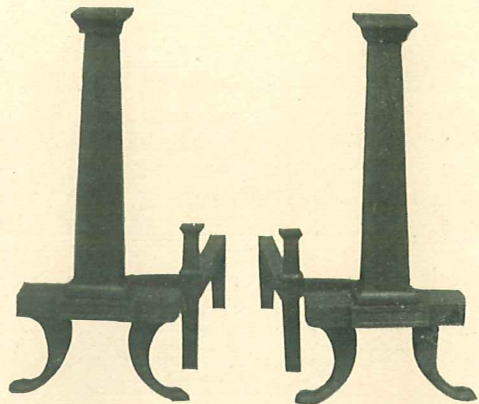
No. 1758. In Iron. No. 1747. In Brass. 17¾ in. high.

No. 1904. In Iron. No. 1745. In Brass. 19 in. high.

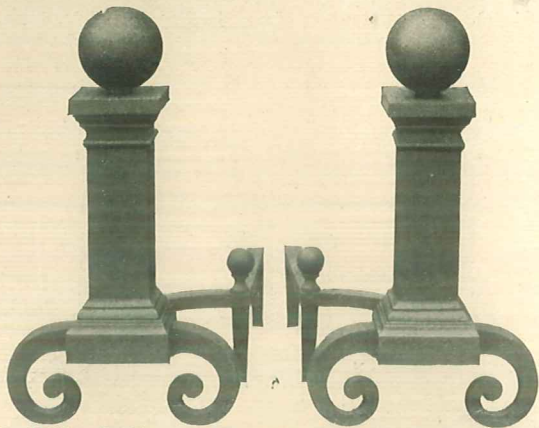
ANDIRONS.
 Either Brass or Black Cast Iron.



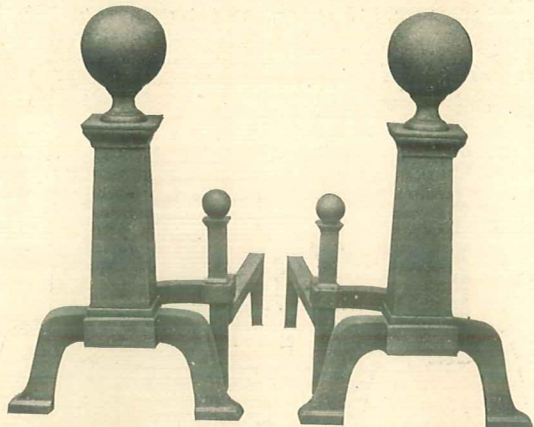
No. 1759. In Iron. No. 1744. In Brass. 21½ in. high.



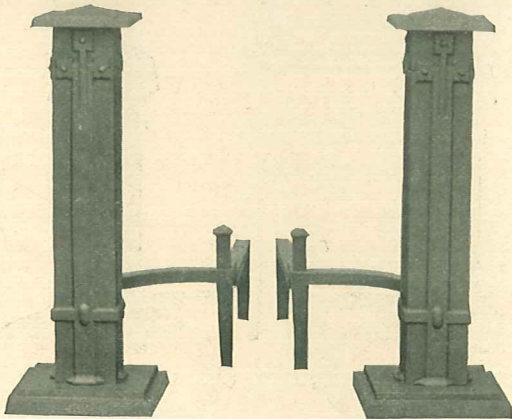
No. 1743. In Brass. 19 in. high.



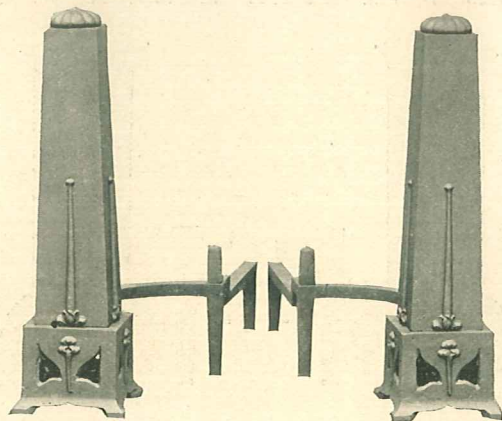
No. 1704. In Iron. No. 1731. In Brass. 21 in. high.



No. 1709. 19½ inches high, in Cast Iron.

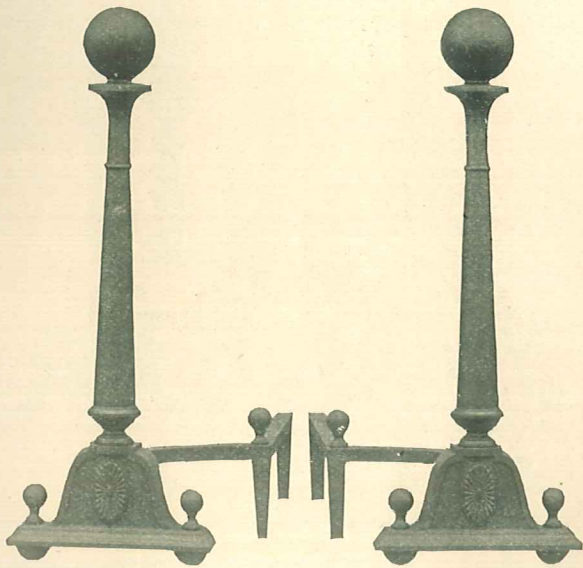


No. 1701. In Iron. No. 1735. In Brass. 20 in. high.

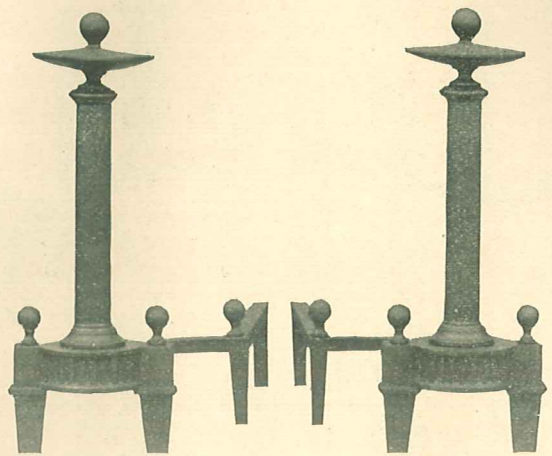


No. 1702. In Iron. No. 1739. In Brass. 22 in. high.

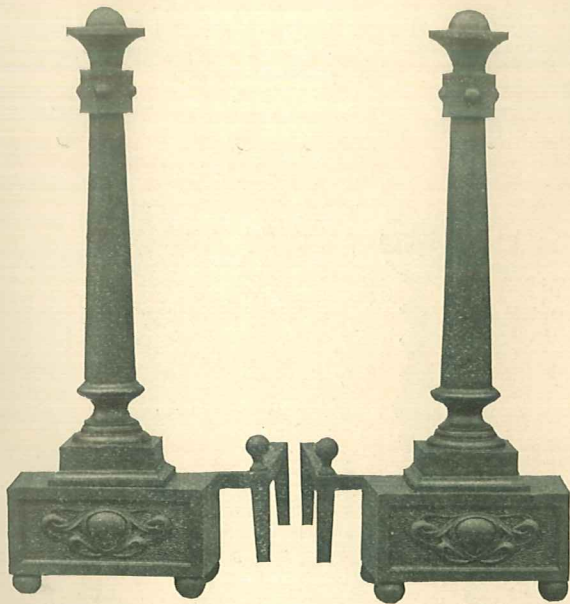
ANDIRONS.
 Either Brass or Black Cast Iron.



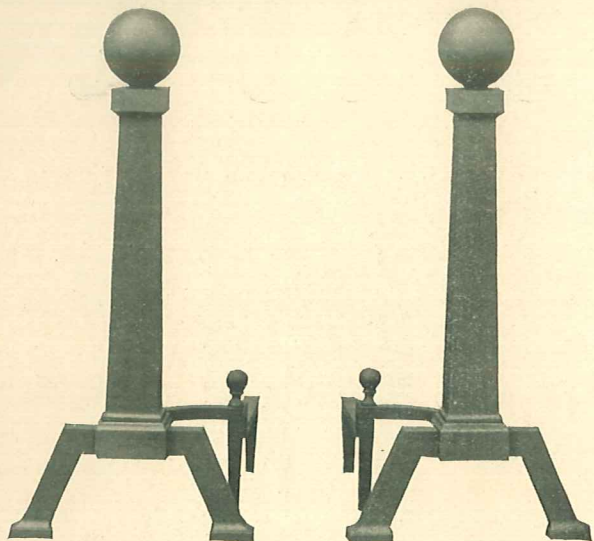
No. 1737. 26 inches high.



No. 1740. 21 inches high.

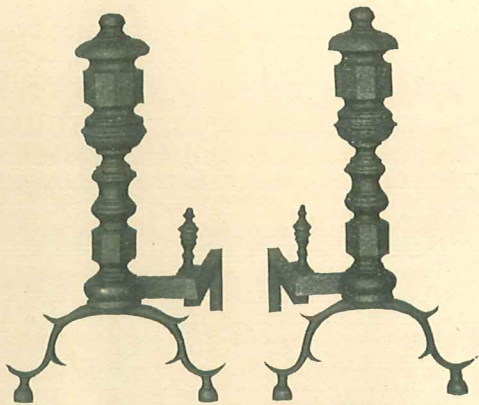


No. 1736. 27½ inches high.

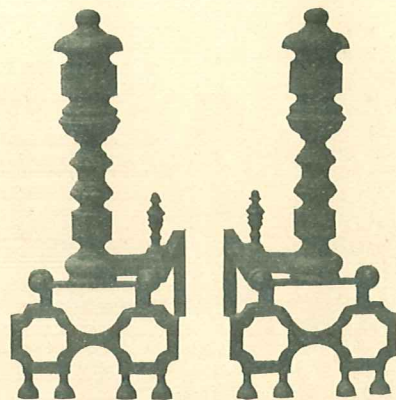


No. 1738. 30½ inches high.

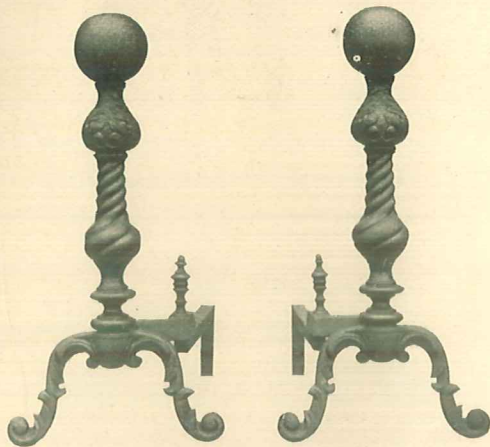
BRASS ANDIRONS.



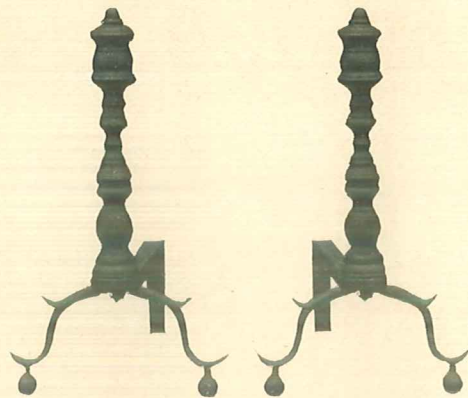
No. 590. 17½ inches high.



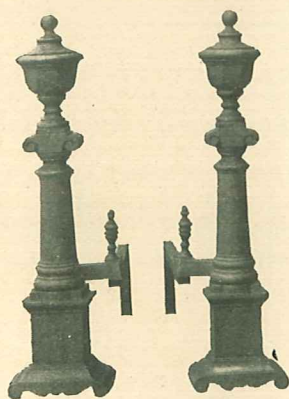
No. 559. 19½ inches high.



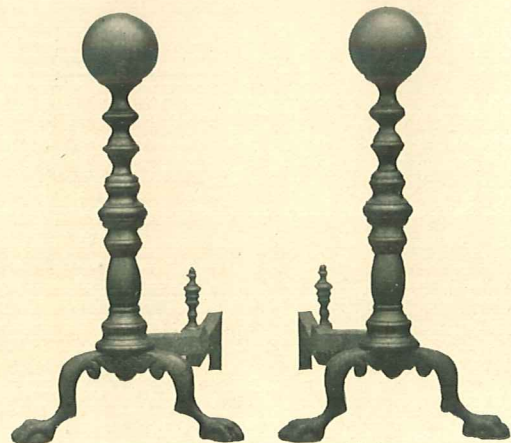
No. 518. 21 inches high.



No. 1742. 15 inches high.

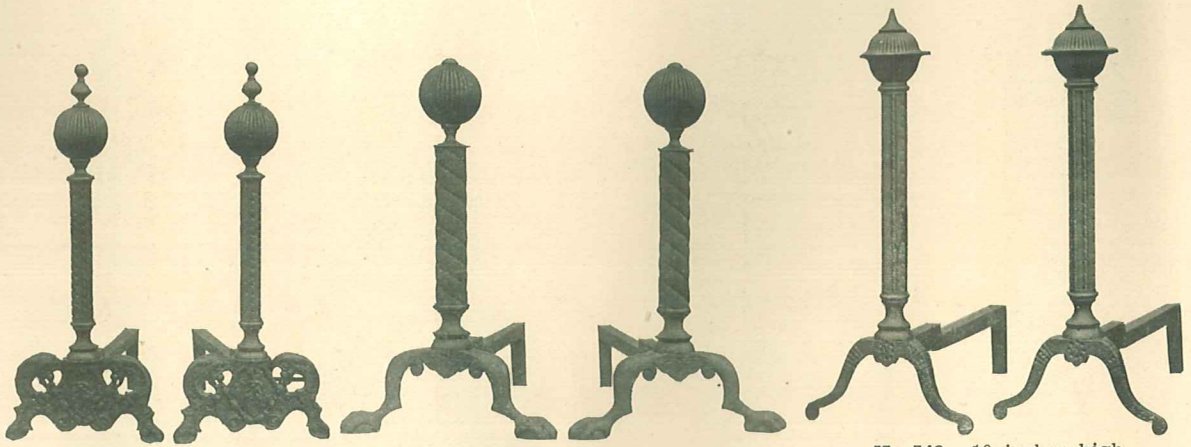


No. 585. 21½ inches high.



No. 591. 19½ inches high.

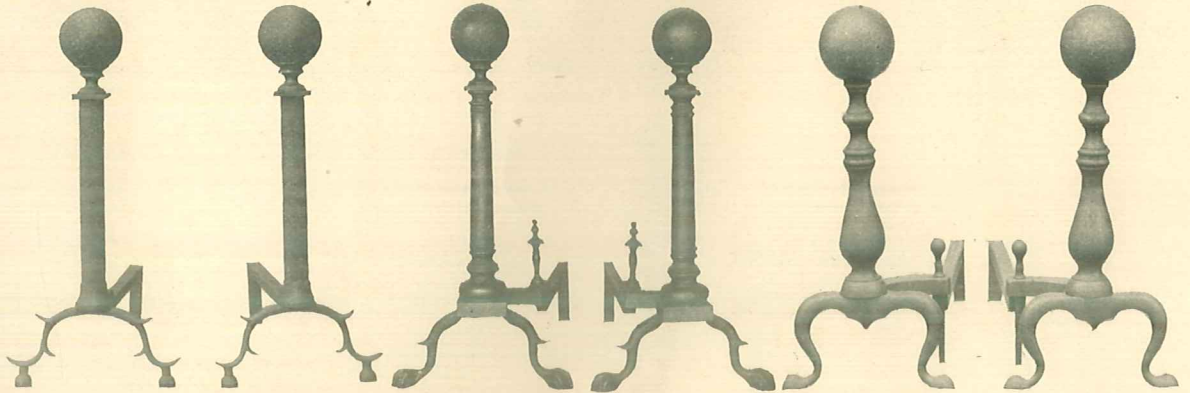
BRASS ANDIRONS.



No. 540. 21 inches high.

No. 541. 18 inches high.

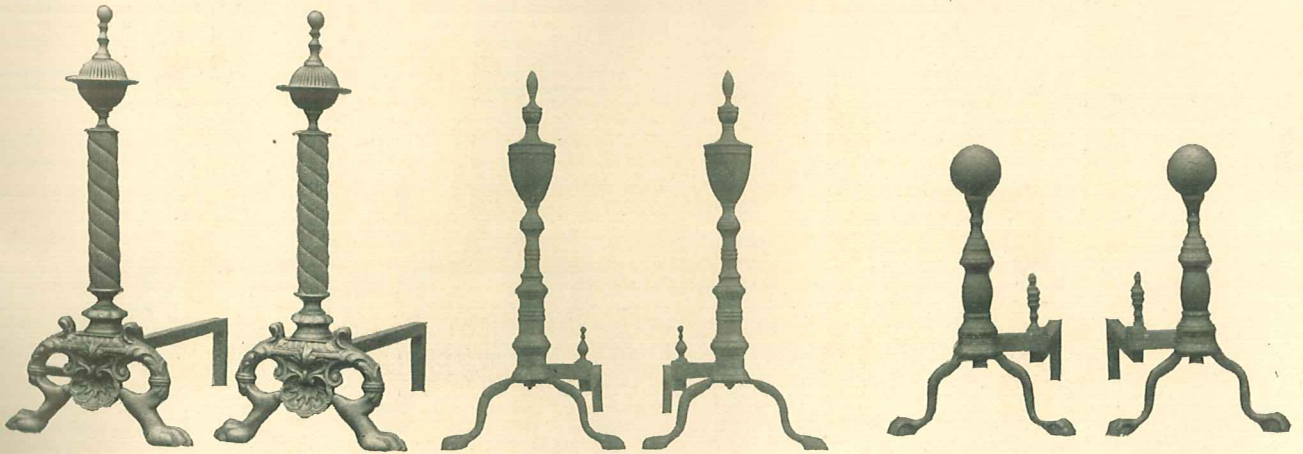
No. 542. 19 inches high.



No. 584. 17½ inches high.

No. 580. 22½ inches high.

No. 587. 18 inches high.

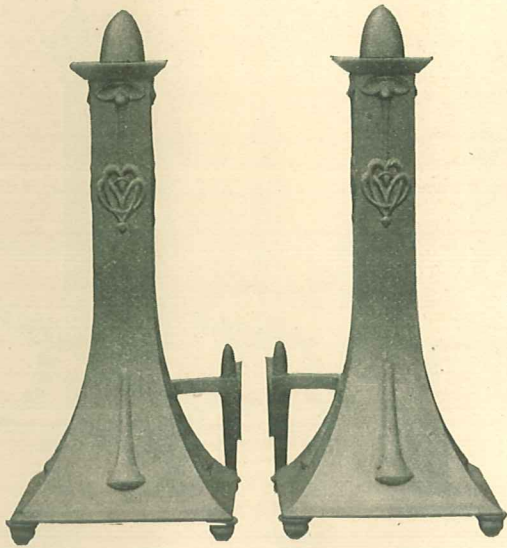


No. 544. 20 inches high.

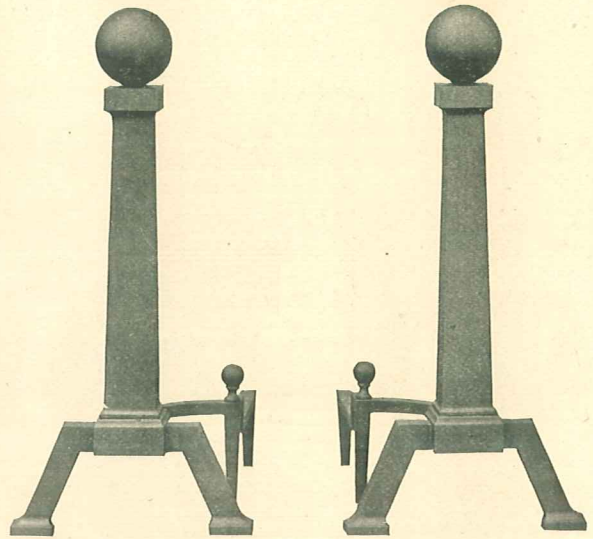
No. 550. 22 inches high.

No. 1741. 15¼ inches high.

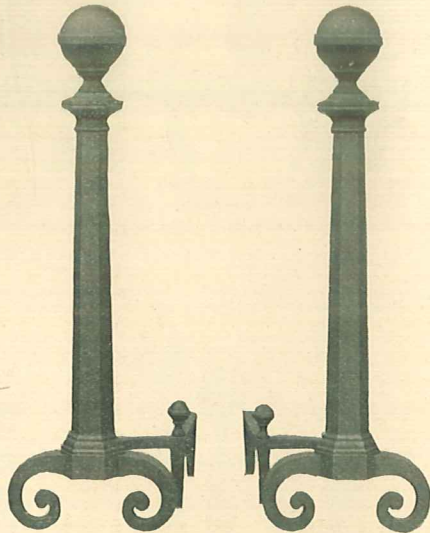
BRASS ANDIRONS.



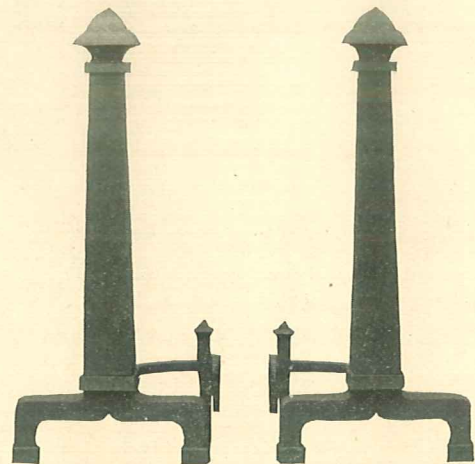
No. 1700. 28 inches high.



No. 515. 30½ inches high.



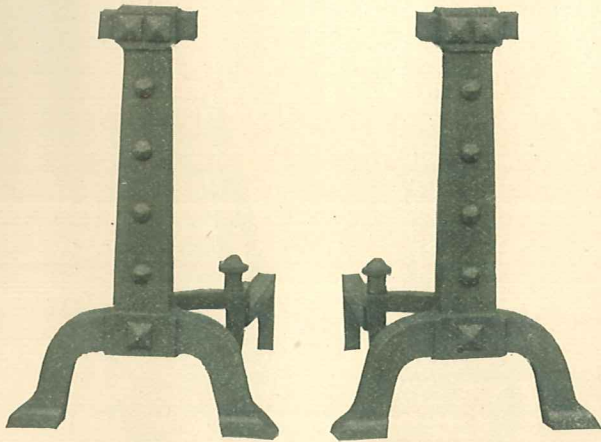
No. 1705. 35½ inches high.



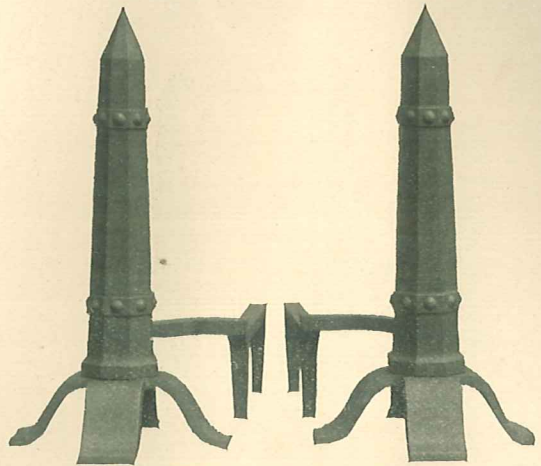
No. 1706. 24 inches high.
1703. 32½ inches high.

Extra large.

BLACK CAST IRON ANDIRONS.



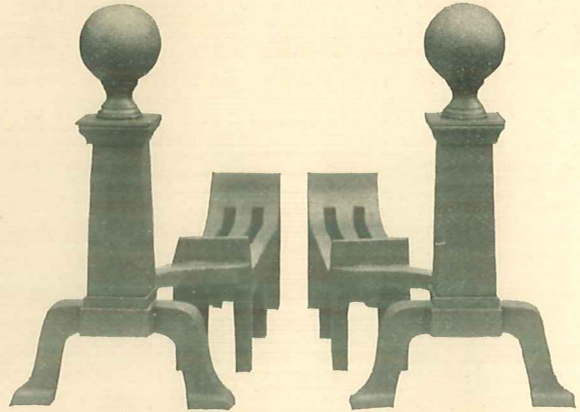
No. 1900. 18 inches high.



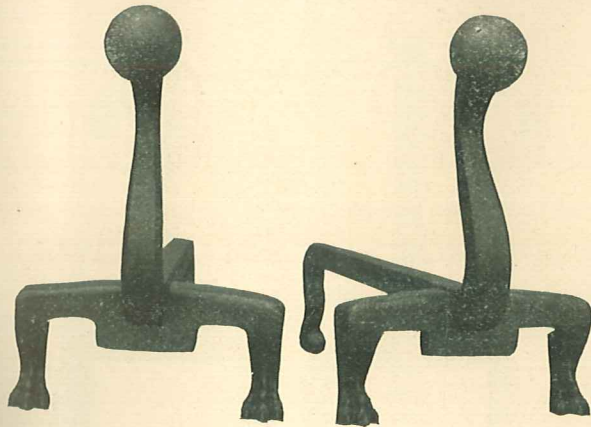
No. 1751. 22 inches high.



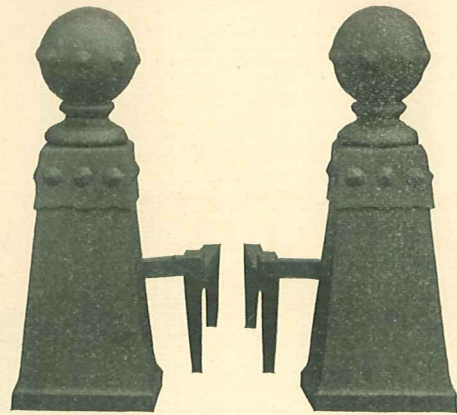
No. 529B. 20 3/4 inches high.



No. 1709B. 19 1/2 inches high.



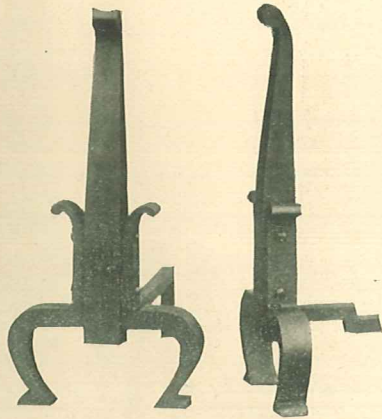
No. 1752. 16 1/4 inches high.



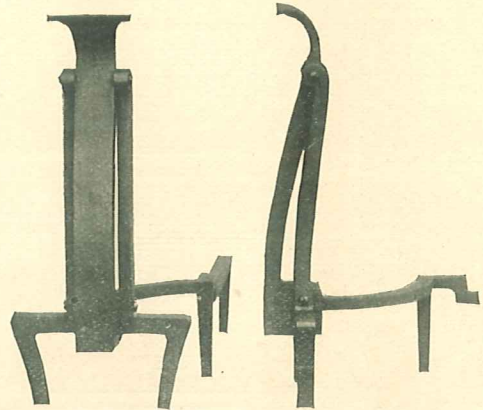
No. 1750. 18 inches high.

BLACK CAST IRON ANDIRONS.

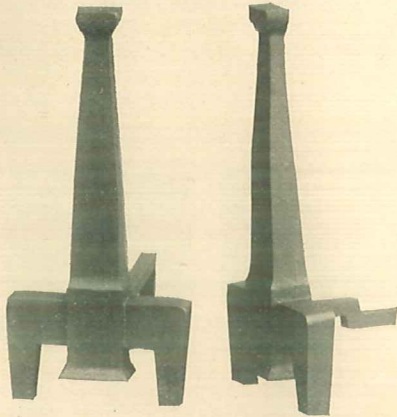
Shanks shown on 1709B are intended for heavy wood fires, and can be adapted also to 1704.



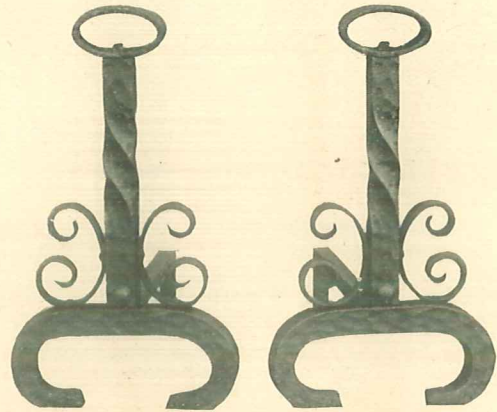
No. 1905. 22 inches high.



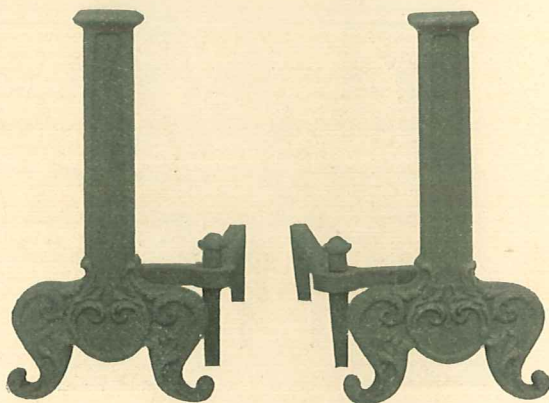
No. 1906. 22 inches high.



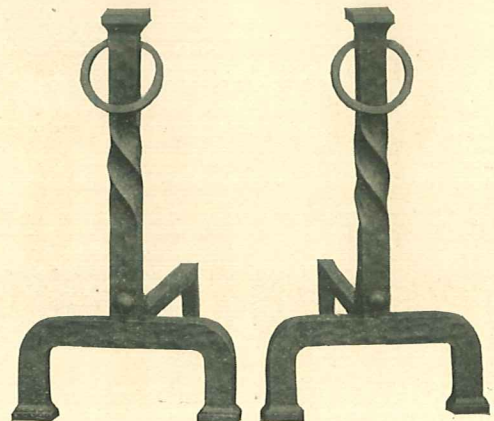
No. 1907. 20 inches high.



No. 1755. 18 inches high.

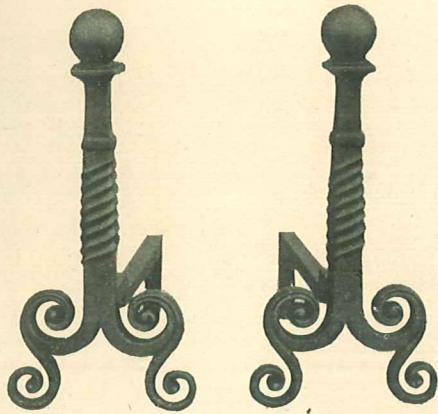


No. 1902. 18 inches high.

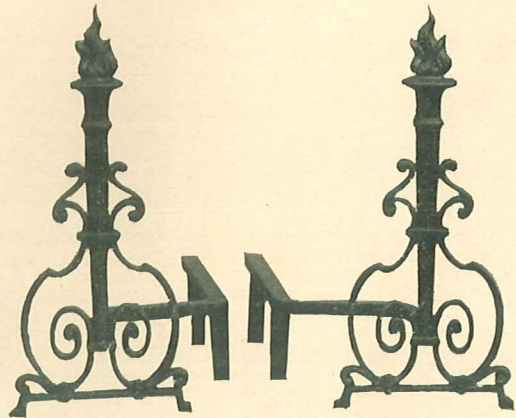


No. 1754. 18 inches high.

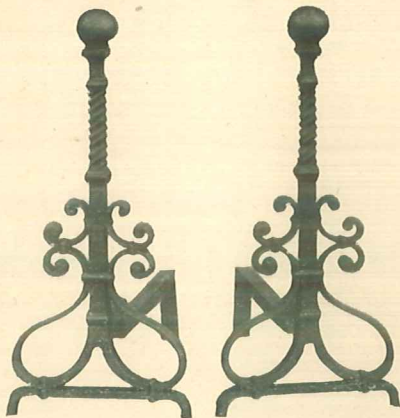
BLACK CAST IRON ANDIRONS.



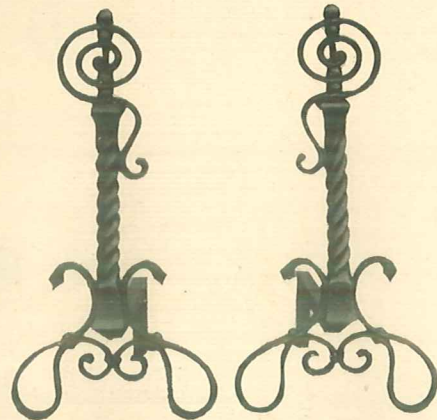
No. 537. 18 or 22 inches high.



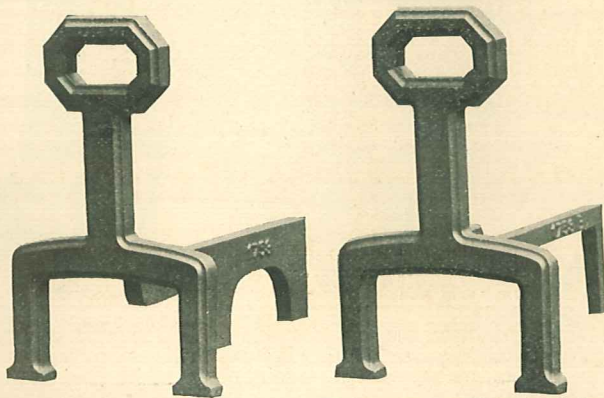
No. 593. 18 inches high.



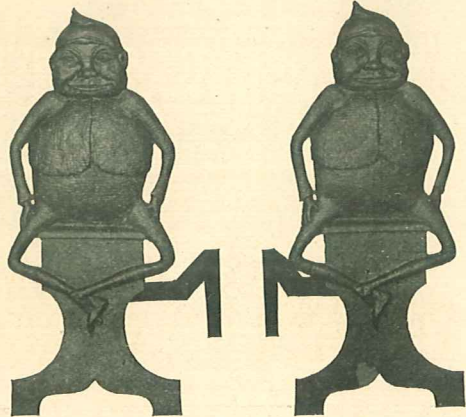
No. 597. 21 inches high.



No. 513. 22 inches high.

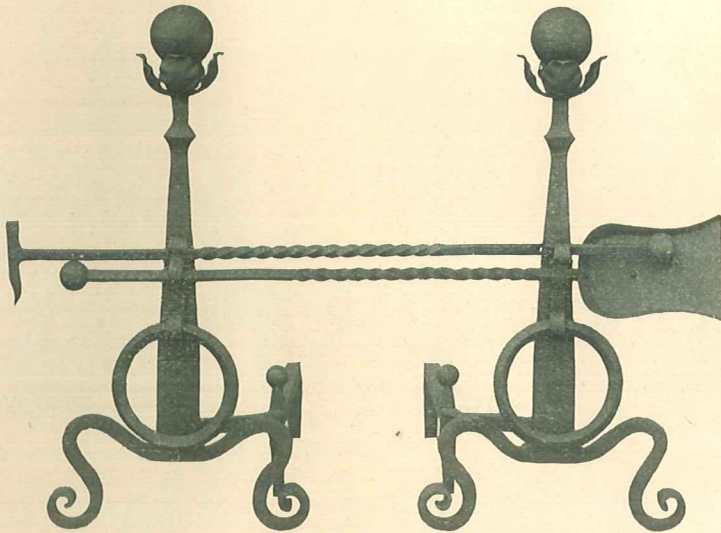


No. 1753A. With heavy shank. No. 1753B. 13 3/4 inches high.
For wood fires.
13 3/4 inches high.

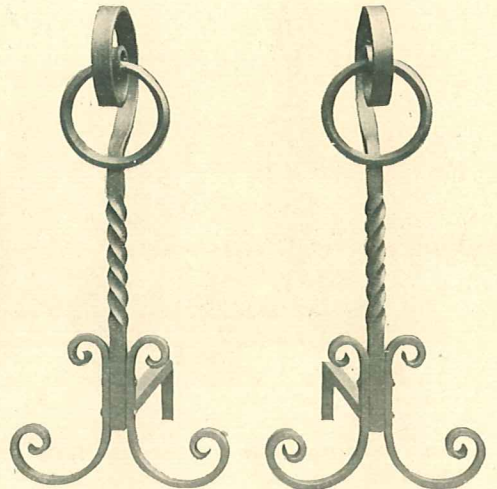


No. 527. 18 1/2 inches high.

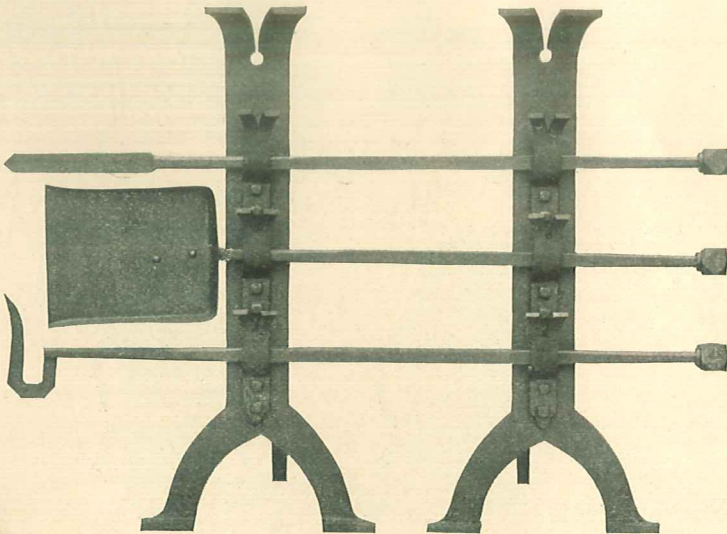
CAST IRON ANDIRONS.



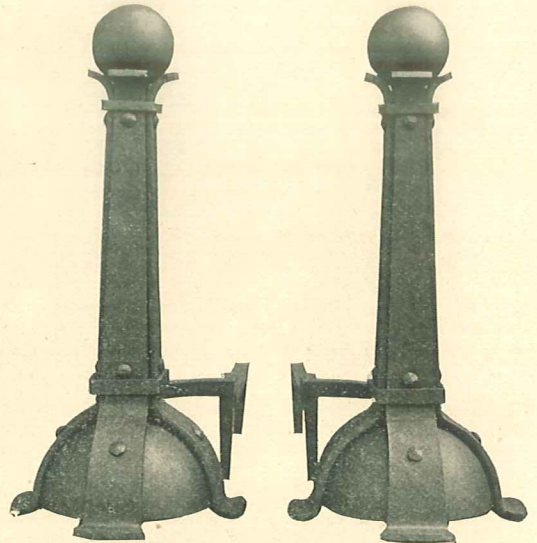
No. 1710. 27 inches high.



No. 568. 24 inches high.

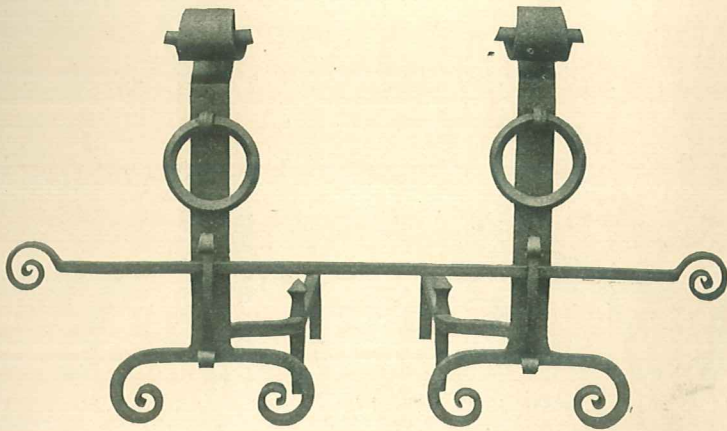


No. 1723. 24 inches high.

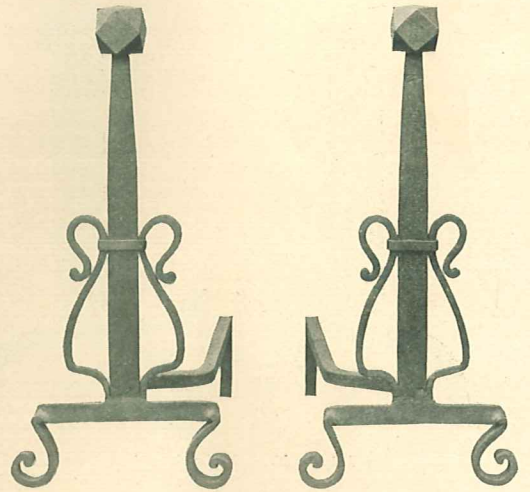


No. 1724. 26 inches high.

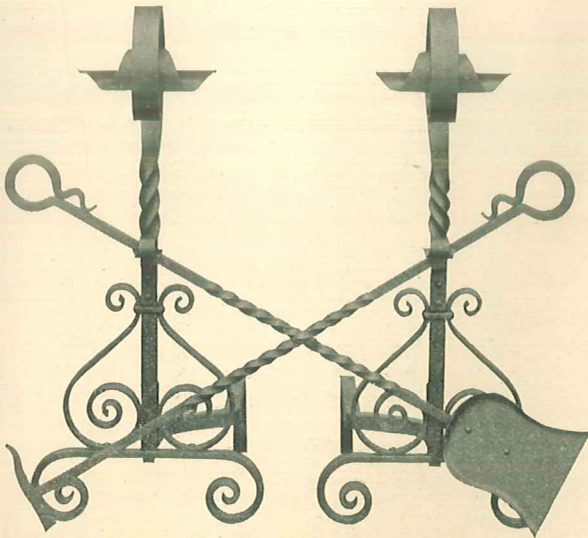
WROUGHT IRON ANDIREONS.



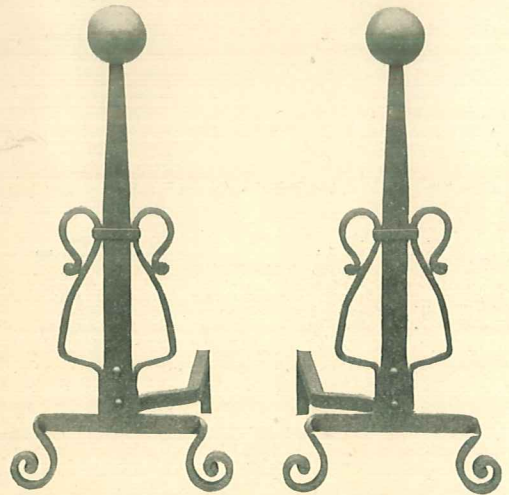
No. 1711. 24 inches high.



No. 1717. 24 inches high.

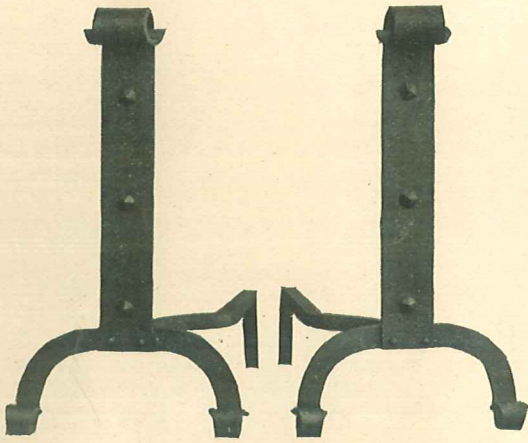


No. 1718. 26 inches high.

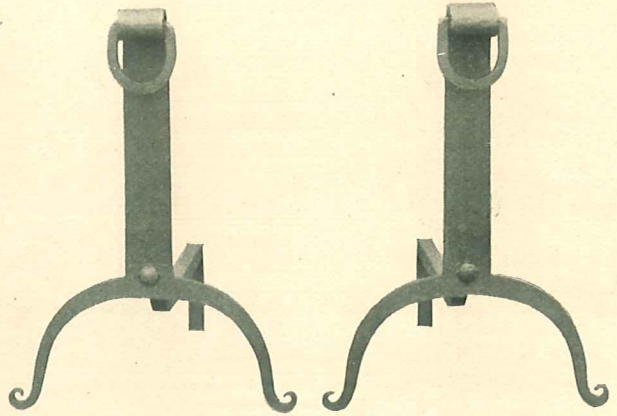


No. 1722. 24 inches high.

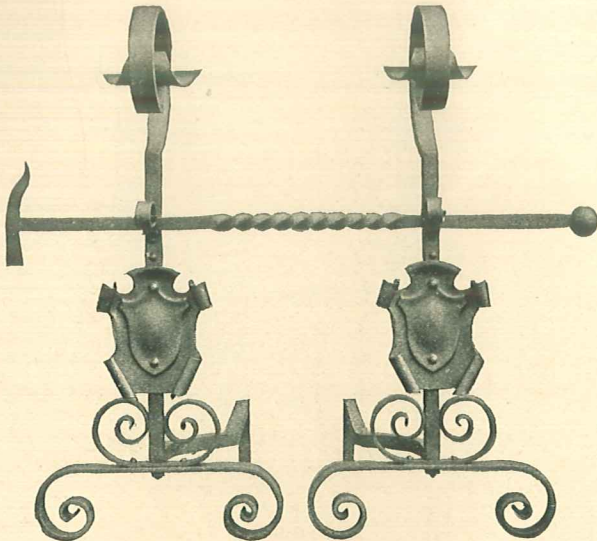
WROUGHT IRON ANDIRONS.



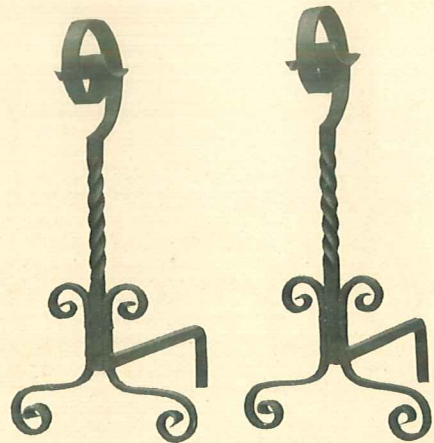
No. 1725. 24 inches high.



No. 1716. 17 inches high.

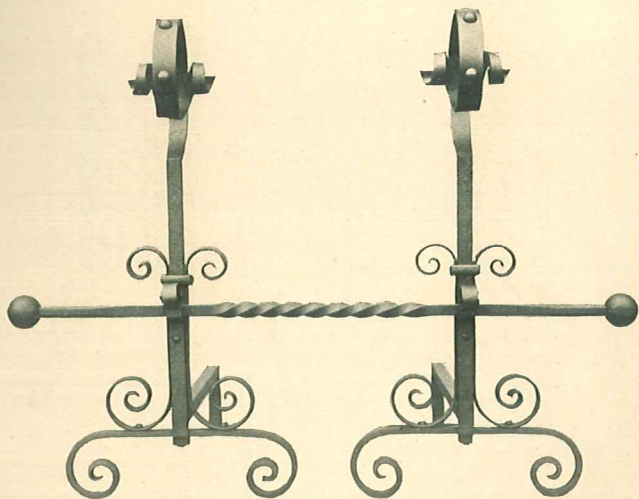


No. 1712. 27 inches high.

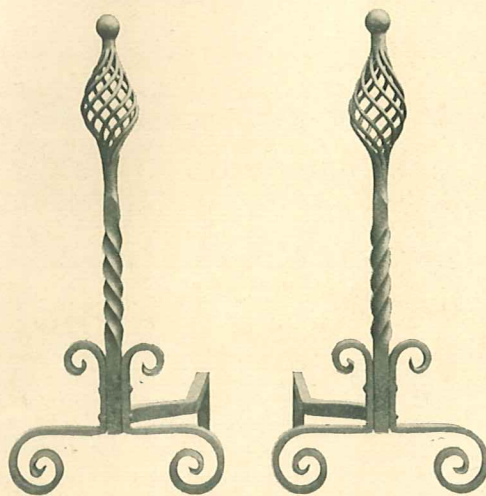


No. 573. 24 inches high.

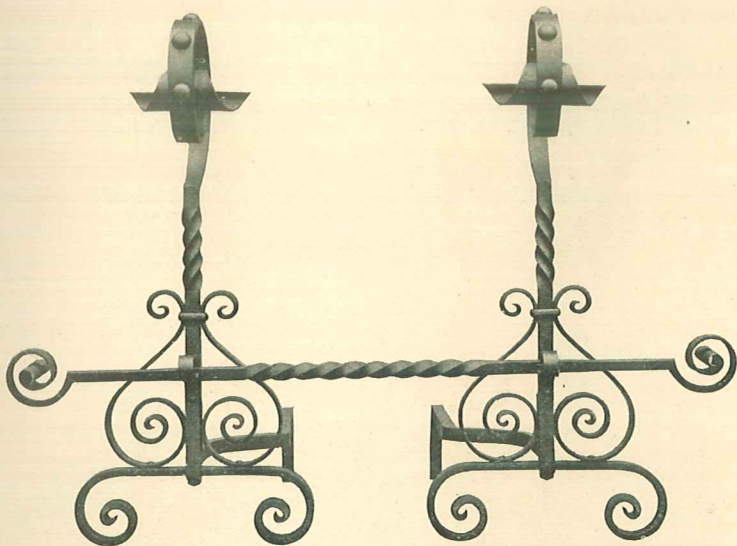
WROUGHT IRON ANDIRONS.



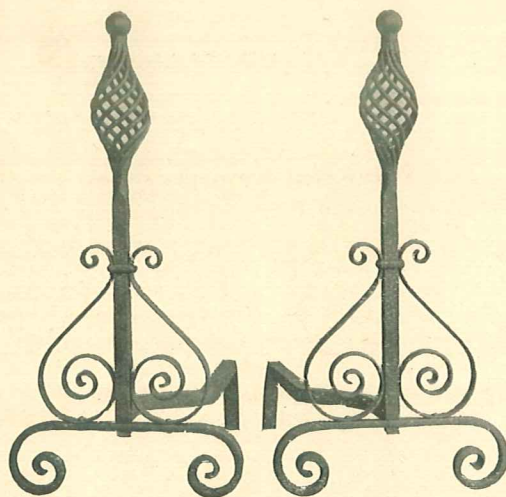
No. 562. 21 inches high.
Light.



No. 561. 24 inches high.

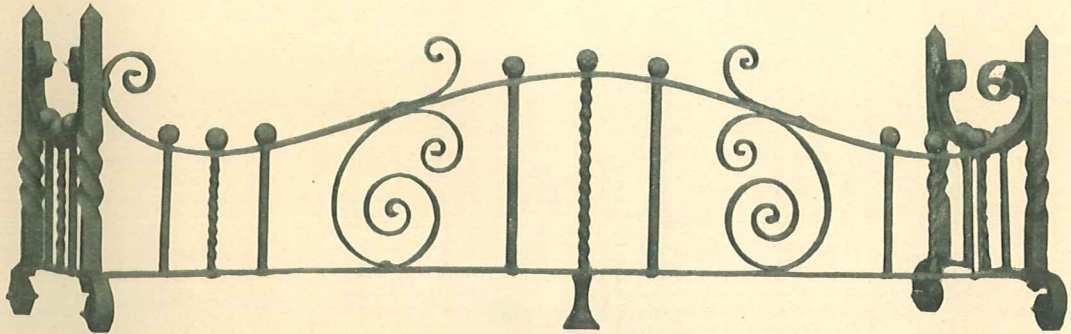


No. 576. 26 inches high.
Medium weight.

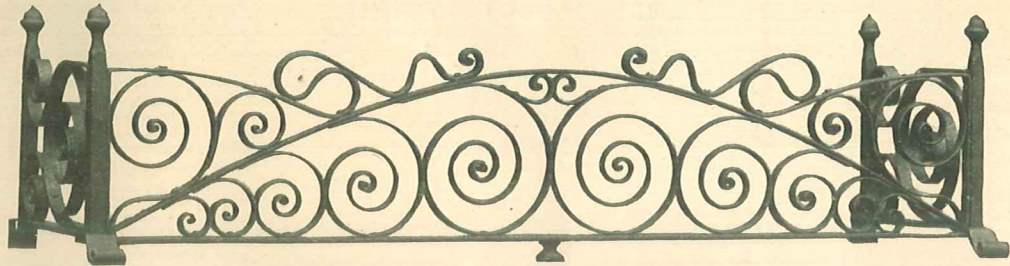


No. 564. 24 inches high.

WROUGHT IRON ANDIRONS.

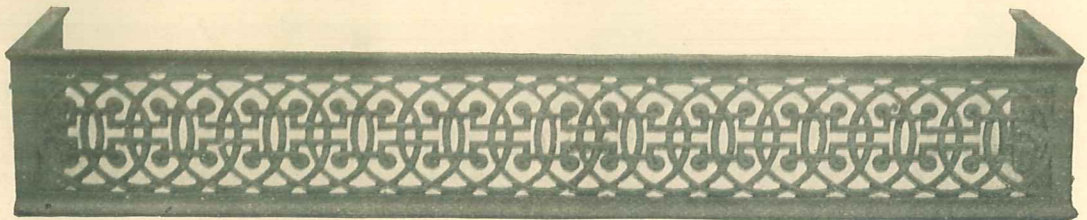


No. 661. 41, 47 and 53 inches long.

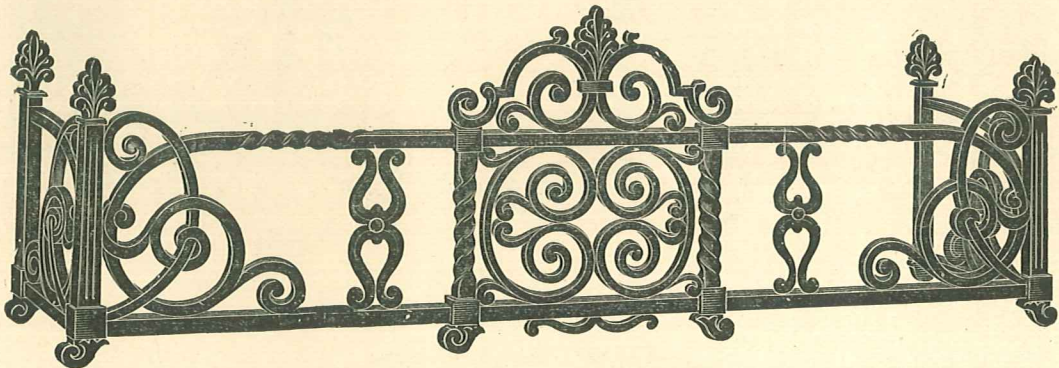


No. 662. 41, 47 and 53 inches long.

WROUGHT IRON FENDERS.

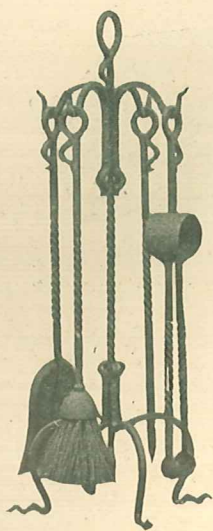


No. 650. 32, 39 and 47 inches long.

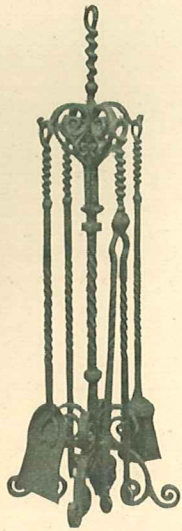


No. 654. 35, 41 and 47 inches long.

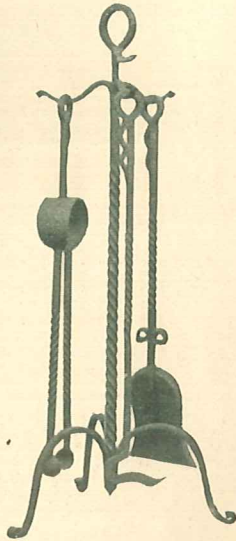
CAST IRON FENDERS.



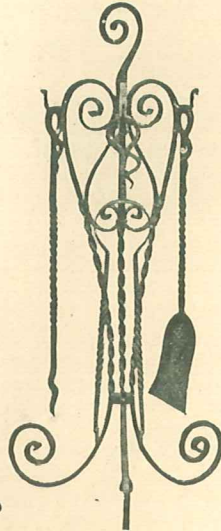
No. 850.
31 inch high.



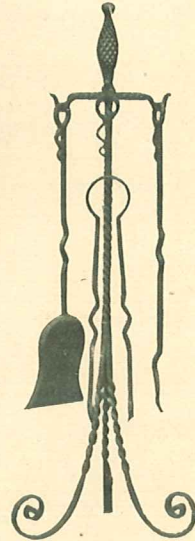
No. 868.
39 inch high.



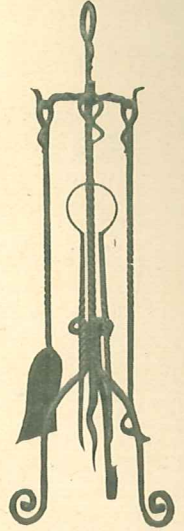
No. 869.
32 inch high.



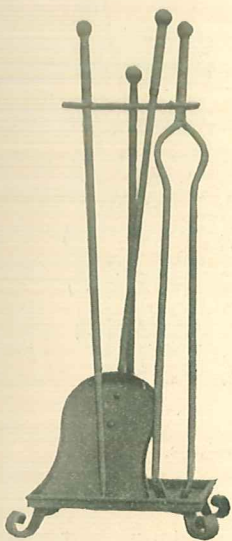
No. 870.
36 inch high.



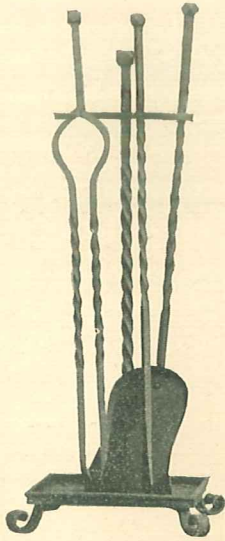
No. 862.
30 inch high.



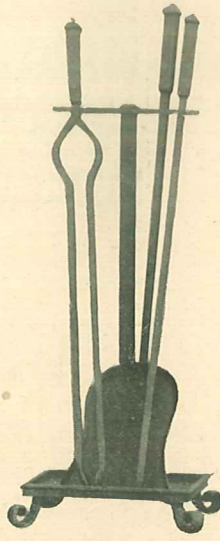
No. 866.
30 inch high.



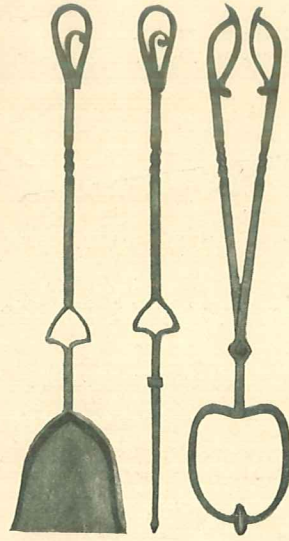
No. 840.
26½ inch high.



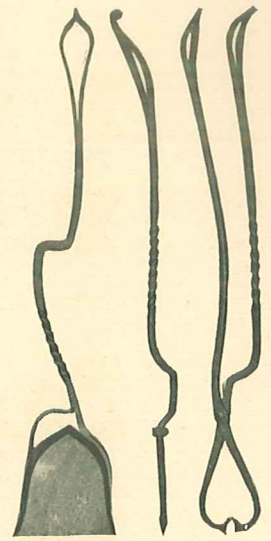
No. 842.
26½ inch high.



No. 841.
26½ inch high.

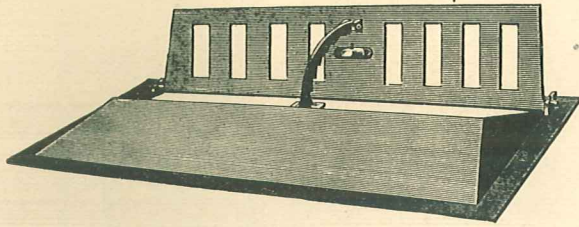


No. 843.
31 inch high.

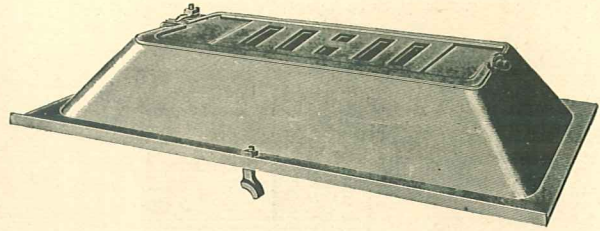


No. 844.
30 inch high.

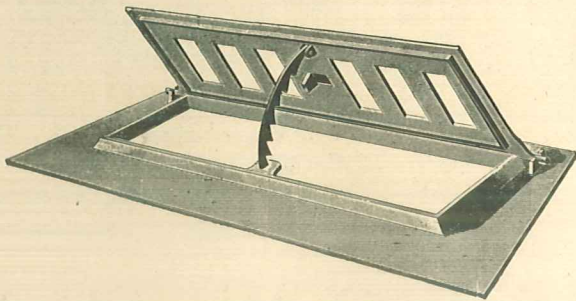
WROUGHT IRON FIRE SETS.



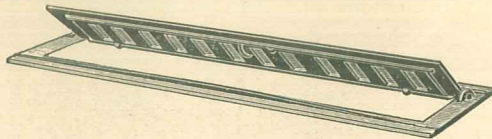
No. 9 Dome Damper.
24 to 43 inches, 12 inches wide.



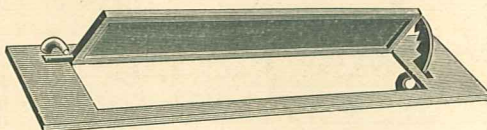
Dome Damper.
No. 12. 24 to 50 in. long by 15 in. wide. $5\frac{1}{2}$ in. dome.
No. 13. 24 to 36 in. long by 13 in. wide. $3\frac{1}{2}$ in. dome.



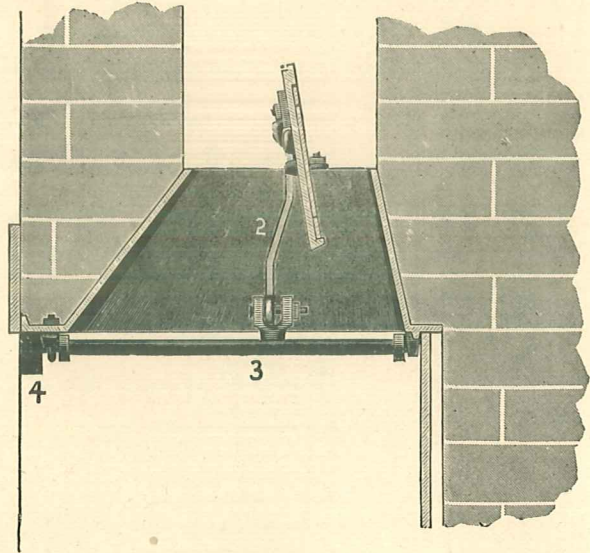
Damper No. 1.
24 to 60 inches.



Damper No. 10.
23, 24, 26 and 28 inches by 8 inches wide.

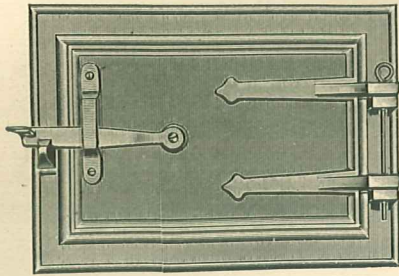


Damper No. 5.
21, 25 and 28 inches by 6 inches wide.



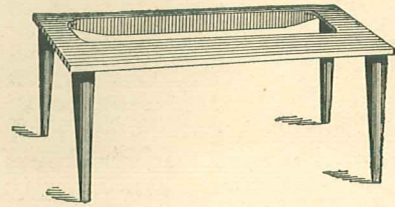
Dome Damper.
Showing damper when in position.
No. 1. Damper door.
2. Knee joint.
3. Damper rod.
4. Thumb latch, used to open and close damper door.

DAMPERS.



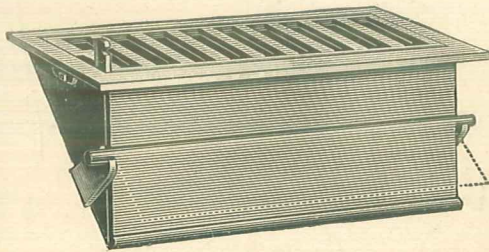
Ash Pit Door.—Hinged Door.

Opening, 8 by 12, 10 by 12, 12 by 12, 12 by 16, 14 by 20.



Gas Log Rest.

10, 12, 14 and 16 inches long.



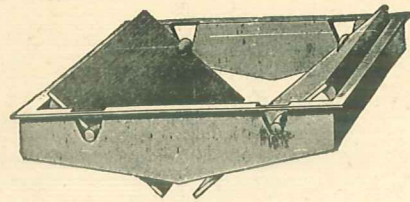
The Peerless Ash Trap.

Opens either automatically or with lever.
 Has Cinder Guard to keep chute from becoming clogged with cinders or coal, also saving coal.
 Made in sizes suitable for either small or large fireplace.

No. 1.	Frame outside,	13 x 7 in.	Opening,	11 x 5 in.	
2.	"	"	13 x 9 in.	"	11 x 7 in.
3.	"	"	16 x 9 in.	"	14 x 7 in.

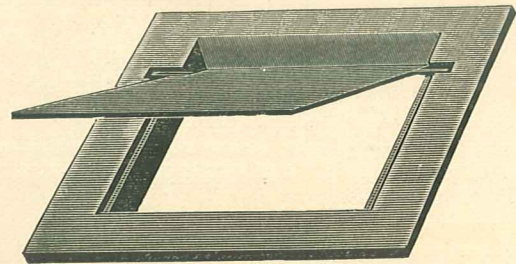
Pocket, 6 inches deep.

Can be furnished without Cinder Guard, if desired.



Automatic Ash Trap.

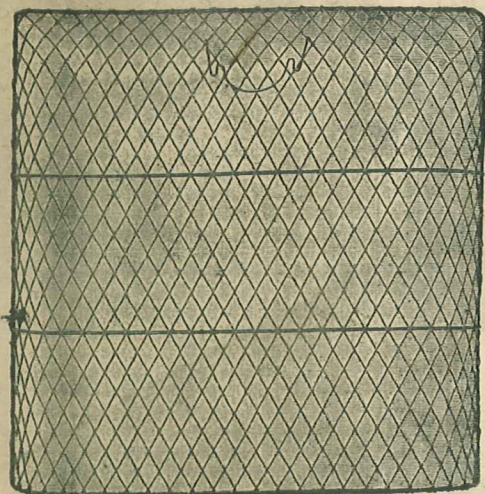
7 by 9 inches.



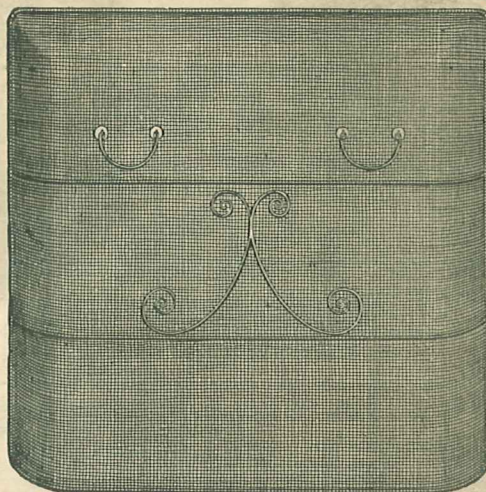
Common Ash Traps.

7 by 10 inches. 9 by 11 inches.

ASH TRAPS AND ASH PIT DOORS.

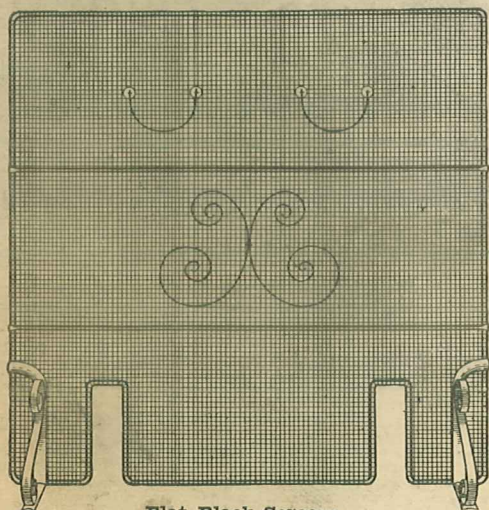


Coppered or Tin Full Lined Guard.



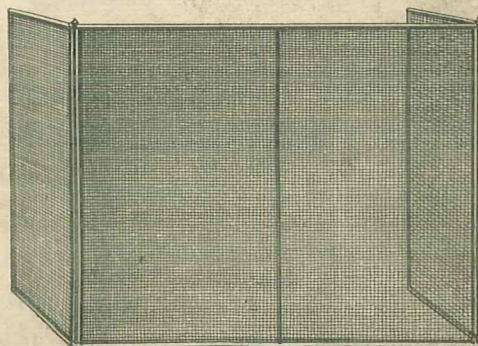
Black Spark Guards.

Made of No. 20 wire, No. 6 mesh, brass handles and trimmings. Very stout.



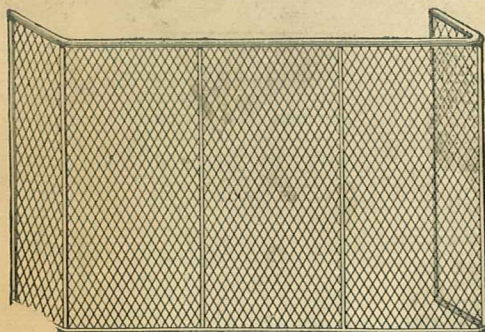
Flat Black Screens.

Made of heavy black wire, fancy wrought legs, brass handles and ornaments, very heavily braced.

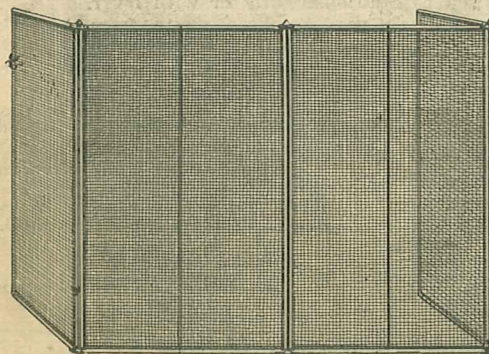


Black Folding Spark Guards.

Made of No. 20 wire, No. 6 mesh, heavily braced.



Nursery Guards.

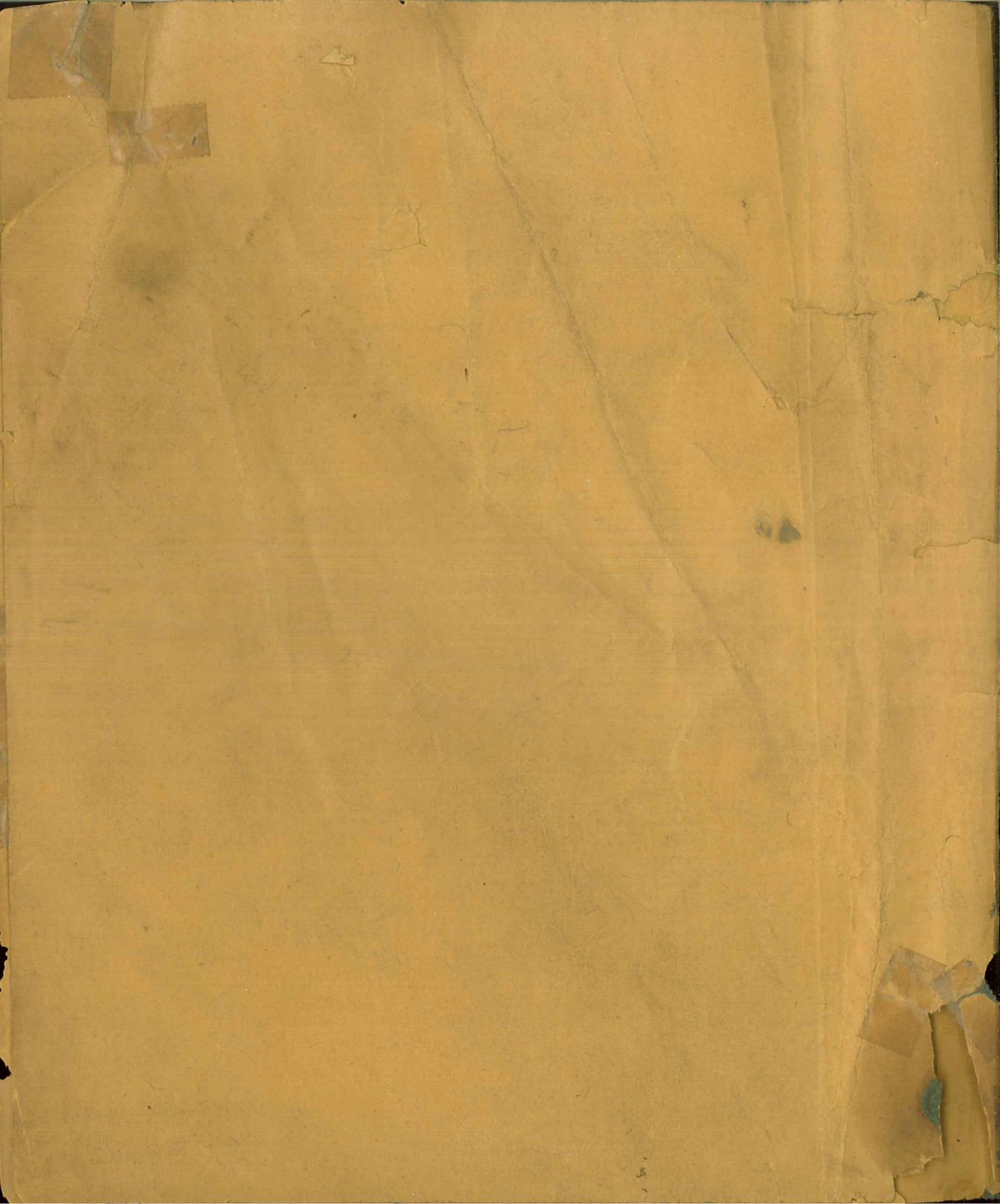


Black Folding Spark Guards.

Folds 16 inches wide. Made of heavy black wire and heavily braced.

SPARK GUARDS OR SCREENS.





33 1/3 %

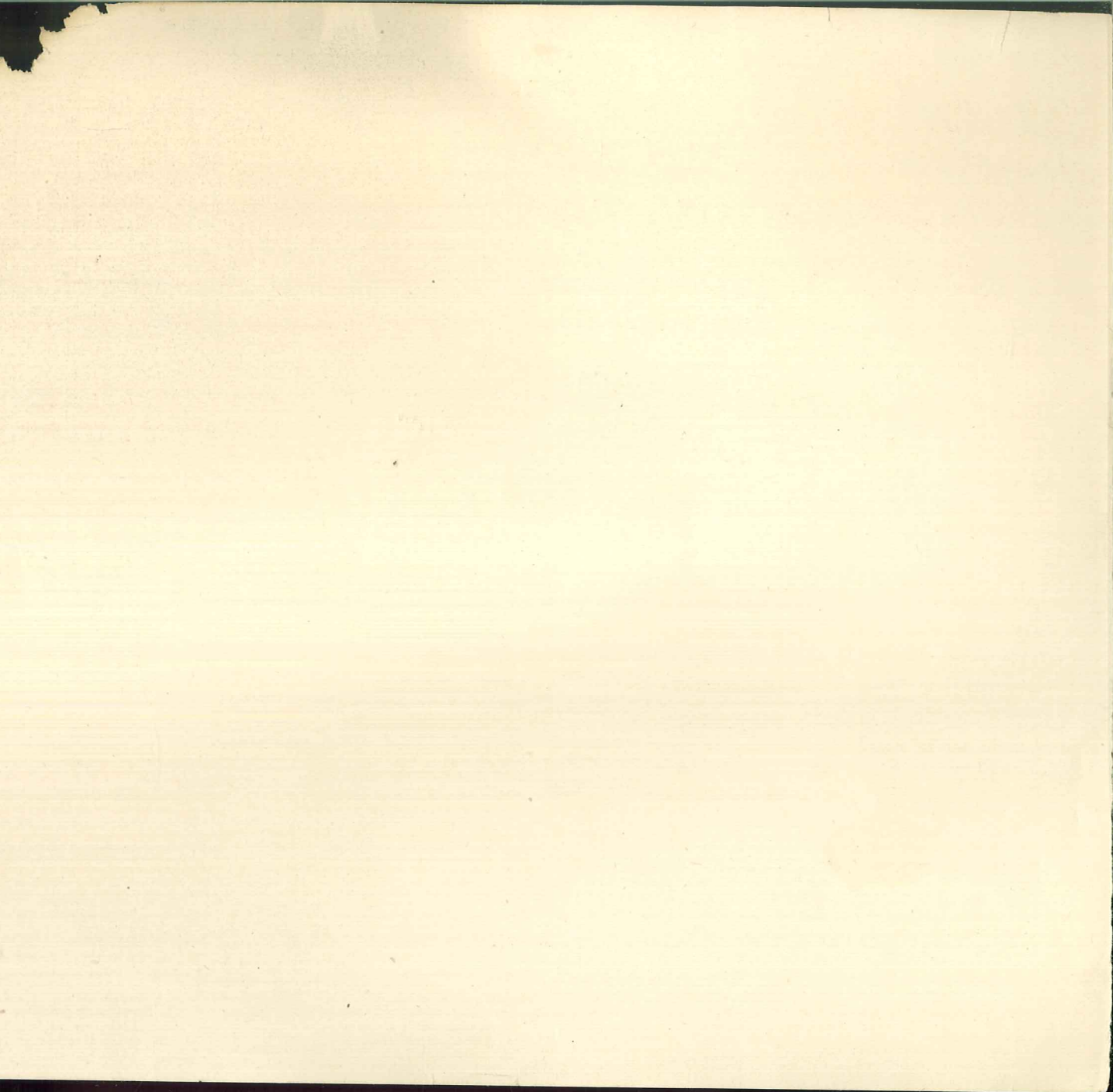
Price List.

CATALOGUE D 1907.

Prefix 17 stands for $30\frac{1}{2}$ inches wide, $30\frac{1}{4}$ inches high; 16 for $24\frac{1}{2}$ inches wide, $30\frac{1}{4}$ inches high.

Special size Iron Linings made to order. Wood fires require special heavy linings and cost extra, according to weight.

List for Frames are for regular sizes, 16 and 17 tile. Special sizes are extra.



PRICE LIST.

MAJESTIC and COLONIAL GRATES.

Size	PLATED	BLACK
7	\$39 00	\$34 00
6	33 40	28 00
7	39 00	34 00
7	39 00	34 00
7	33 75	28 50
6	27 90	23 40
7	33 75	28 50
6	27 90	23 40
7	33 75	28 50
7	32 00	28 25
6	27 40	23 00
7	32 00	26 30
24"	30 75	26 70
20"	29 25	25 50
6	25 80	22 80
7	30 75	26 70
6	25 80	22 80
	46 00	34 00
Black, plated columns	39 00	34 00

BUCKEYE GRATE—Shaker Bottom.

Nos.	Tile Size	PLATED Each	BLACK Each
1035	16	\$21 45	\$18 60
1042	17	23 85	21 00
1043	16	28 50	17 75
1046	16	21 30	18 90
1047	17	26 10	22 50
1054	16	22 25	18 90
1054	17	26 00	22 65
1055	16	20 40	17 80
1056	17	23 85	21 00

WROUGHT IRON ANDIRONS.

Nos.	Per Pair	Nos.	Per Pair
561	\$11 25	1716	\$10 50
562	12 75	1717	10 85
568	10 90	1718	19 50
573	8 65	1722	10 90
576	18 00	1723	26 25
1710	22 50	1724	24 00
1711	18 75	1725	12 00
1712	20 10		

BRASS ANDIRONS.

Nos.	Per Pair	Nos.	Per Pair
518	\$25 50	1735	\$36 00
540	11 40	1736	60 00
541	9 90	1737	36 00
542	9 40	1738	57 00
544	12 60	1739	60 00
550	21 00	1740	31 50
559	27 75	1741	18 00
580	22 50	1742	12 00
584	9 75	1743	30 00
585	31 50	1744	48 00
587	18 00	1745	40 00
590	24 00	1746	38 00
591	22 50	1747	36 00
1730	39 00	1748	39 00
1731	42 00		

CAST IRON ANDIRONS.

Nos.	Per Pair	Nos.	Per Pair
513	\$ 3 90	1753A	\$4 50
515	13 50	1753B	3 15
529B	16 50	1754	5 40
537	5 40	1755	6 90
593	4 13	Top Ring and Scroll are Wrought Iron.	
597	4 65		
1700	16 50		
1701	12 00	1756	12 00
1702	12 75	1757	12 75
1703	13 50	1758	12 75
1704	13 50	1759	12 00
1705	15 00	1900	8 25
1706	9 00	1902	8 25
1709	12 00	1903	11 40
1704B	17 25	1904	12 00
1709B	17 25	1905	9 00
1750	12 00	1906	10 50
1751	12 00	1907	9 00
1752	12 00		

BLACK FRAMES.

Nos.	Each	
	All frames, plain. Square or hammered bolt heads, add to list	\$3 75
1236	With hood.	2 50
1237	With hood.	6 75

CAST BRASS FRAMES.

Nos.	Each	Nos.	Each
726	\$25 50	736	\$10 90
730	18 00	760	13 50
731	18 00	761	13 50

HT BRASS FRAMES.

Return	Weight	Each
1		\$3 00
3/8		3 00
3/8		4 60
1		3 45
1	Medium	4 60
1 1/2	"	4 00
1 1/2	"	4 35
3/4	Heavy	4 20
1 1/2	"	4 95
1 1/2	"	4 95
1 1/2	"	5 55
1	Extra heavy	7 50
1 1/2	"	9 00
1	"	9 00
1 1/2	"	7 50
3/4	"	7 50
1	Medium	3 90
1	"	4 35
1 1/2	"	4 90
1	"	5 70
3/4	"	3 60
3/4	"	3 60
1	Heavy	6 75
1	"	4 05
3/4	Medium	4 35
3/4	"	4 35
5/8	"	4 35
1	Extra heavy	8 60
1/2	Medium	4 60
1/2	"	4 50

**ND SUMMER PIECES.
nd Steel Summer Pieces.**

Size	PLATED	BLACK
	\$5 33	\$3 60
	5 93	4 13
	5 10	3 30
	5 25	3 68
	6 30	4 50
	9 60	6 30
	5 10	3 30
	5 25	3 53
	6 75	4 65
	5 25	3 53
	6 75	4 65
	5 25	3 53
	5 10	3 30
	5 25	3 53

FRAMES AND SUMMER PIECES.

All Cast Iron.

Nos.	Tile Size	PLATED	BLACK
316	16	\$ 7 50
316	17	10 20
308	16	7 13	\$4 80
329	17	12 38	8 40
1429	16	8 93	6 60
333	16	12 00
338	17	13 20
338	"	11 10
1405	17	10 05	6 00
1408	16	7 80	4 95
1408D	16	7 80	4 95
1409	16	7 13	4 80
1410	17	10 20
1411	17	9 30
1411A	17	9 60
1411B	17	9 60
1414	16	7 13	4 80
1417	16	7 28
1418	16	7 13
1419	17	10 05
1422	17	9 83
1422	16	7 50

INDEPENDENT SUMMER PIECES.

Nos.	30 Inches High	PLATED Finish	BLACK Finish
1479	20 in. wide.	\$3 90	\$3 00
	22 "	4 05	3 00
	24 "	4 88	3 60
	26 "	5 25	4 13
	27 1/2 "	6 75	4 50

CRANE AND CHAINS.

Nos.	PLATED Each	BLACK Each
1 and 3	\$10 50	\$5 25
2	10 50	6 75
4	5 25
4 Crane only.	3 75
Iron pot and hook.	1 50
241 Basket.	12 75
241 "	26 25
264 "	7 95
1506 "	13 50
1506 "	24 00

COMBINATION GRATES.

With K Basket 7 or 9 inches Deep.

For "O" Basket, add to list, \$0.55.

For "A" Basket, add to list, \$0.30.

Nos.	Tile Size	PLATED	BLACK
1346	17	\$12 30	\$8 70
1347	16	10 00	7 50
1347D	16	10 00	7 50
1349	16	9 30	7 05
1355	17	12 60	9 30
1354	17	12 00	9 00
1354A	17	12 30	8 70
1354B	17	12 30	8 70
1357	16	9 30	7 05
1359	16	9 30	7 05
1369	16	9 30	7 05
1370	17	12 30	9 30
1372	16	9 60	7 35
1372	17	12 30	9 30
1378	17, Black, brass columns,	17 70	
1390	16	10 50	7 50
1390	17	13 20	9 75

COMBINATION GRATES.

Having Stamped Sheet Steel Summer Pieces.

Nos.	Tile Size	PLATED	BLACK
1350	16	\$ 9 00	\$7 35
1350	17	11 25	8 70
1363	17	9 00	7 35
1366	16	7 50	5 95
1367	16	7 65	6 15
1367	17	9 30	7 65
1381	16	7 65	6 15
1381	17	9 90	7 80
1384	16	7 65	6 15
1384	17	9 90	7 80
1386	16	7 65	6 15
1387	16	7 50	5 95
1389	16	7 65	6 15

BRASS HOODS.

No. 1	\$5 65	No. 2	\$7 15
-------	--------	-------	--------

PORTABLE BASKETS.

zes can not be altered. Measures given here are extreme over all. Black finish sent unless otherwise ordered.
 Brown Pieces (ash screens) are extra and only sent when ordered.

Depth inch	Width of back inch	BLACK	PLATED	Nos.	Front inch	Depth inch	Width of back inch	BLACK	PLATED	Nos.	Front inch	Depth inch	Width of Back inch	BLACK	PLATED
11	18	\$15 00	\$27 00	291	24	\$15 75	1508	23½	12¾	21	\$13 50
11	20	15 00	27 00	291	26	17 25	1508	23½	12¾	21	15 00
13	23	16 50	28 50	291	30	19 50	1509	26¾	14½	20	*	\$24 00
13	26	24 00	42 00	293	24	36 00	1509	26¾	14½	20	†	22 50
13	30	30 00	293	30	39 00	1509	26¾	14½	20	13 50
13	36	45 00	294	20	30 00	1510	27	13¾	20½	17 25
15½	23	12 00	23 25	294	22	30 00	1510	27	13¾	20½	12 00
14½	22¾	18 00	24 00	294	24	31 50	1513	24½	13	19½	11 70	15 00
14½	22¾	21 00	27 00	296	20½	12½	17	7 80	\$ 9 45	1514	23½	12¾	21¼	14 25
14½	22¾	24 00	30 00	296	23	12½	19	7 95	9 90	1515	18½	11½	17½	6 90	8 25
13½	20	10 00	13 50	296	25	12½	19	8 60	10 80	1515	20	11½	17½	7 05	8 40
13½	20	10 00	13 50	297	20¾	12½	19	7 95	9 75	1515	22½	11½	18¾	7 20	8 70
13½	22½	12 25	18 00	297	24	12½	21¾	8 70	10 80	1515	24½	11½	21¾	8 10	9 90
10	16	12 00	17 25	298	21¾	12	18	7 95	9 75	1516	24	13	18¼	15 00	19 50
11½	19	12 00	18 00	298	25¼	12	20½	8 70	10 80	1516	26	13	20¼	16 50	21 00
11½	21½	12 25	18 25	299	20	12¾	16¾	7 80	9 75	1517	28	13	23½	12 75	16 50
14½	23	12 75	19 50	299	24½	12¾	21	8 60	10 80	1517	24	13	20¾	11 25	15 00
13½	20½	12 75	20 60	1500	26½	14	21¾	17 10	20 60	1518	23½	12	16¾	11 25	15 00
13½	24	12 75	20 60	1500	30¾	14	25¾	18 75	22 50	1518	27	12	19¾	12 75	16 50
14½	17	9 75	11 60	1500	36½	14	31¾	22 50	27 00	1519	23½	13	20½	11 25	15 00
14½	19	10 50	12 25	1501	24½	13	20½	12 00	15 00	1519	27	13	22	12 75	16 50
14½	21	10 80	12 75	1502	20	12½	20	9 90	14 40	1520	20	15 75
15	23½	13 50	21 00	1502	22	12½	22	9 90	14 40	1520	22	15 75
13½	21	13 50	28 50	1502	24	12¾	24	11 25	15 75	1520	24	17 25
13½	24	16 50	31 50	1503	21	12¾	17½	8 25	10 00	1521	20	21 90
13½	30	19 50	37 50	1503	22¼	12¾	19¼	8 40	10 00	1521	22	21 90
14½	20	13 10	1503	24¼	12¾	19¼	9 25	11 25	1521	24	23 40
14½	24	14 25	1504	18	12½	17½	7 05	8 40	1522	20	23 25
14½	30	17 25	1504	20	12½	17½	7 35	8 85	1522	22	23 25
9	20	13 10	1504	22	12½	19½	7 35	8 85	1522	24	24 75
9	24	14 25	1504	24	12½	21½	8 10	9 90	1530	30	14	27	15 00	19 50
14	22½	12 60	16 50	1504	27¼	12½	24	10 20	12 25	1530	27	14	24	12 75	17 25
14	22½	14 10	18 00	1504	30	12½	26	11 70	13 85	1530	24	12	21	11 25	15 75
12½	18	9 00	12 25	1504	36¾	12½	34	15 00	18 75	1530	22	12	19	9 75	14 25
12½	18	9 30	12 75	1504	16	9½	13¼	7 05	8 40	1530	20	12	17½	9 75	14 25
12½	22½	10 00	13 50	1504	18¼	9½	15½	7 05	8 40	1531	18	12½	17¼	7 05	8 40
12½	22½	11 25	14 25	1504	20	9½	17¼	7 35	8 85	1531	20	12½	17¼	7 35	8 85
12½	17	8 25	9 95	1504	22	9½	19½	7 35	8 85	1531	22	12½	19¼	7 35	8 85
12½	17	8 60	10 25	1504	24	9½	21½	8 10	9 90	1531	24	12½	21¾	8 10	9 90
12½	21¾	9 00	11 10	1505	18½	12½	15	6 90	8 55	1532	26½	15½	24½	21 00
12½	21¾	10 50	12 25	1505	21½	12½	17½	7 35	9 00	1532	23	13	20½	18 00
.....	14 25	1505	24½	12½	20¾	8 10	10 00
.....	14 25	1507	24½	12¾	20¾	10 00	13 50

Balls on Standards.

†All plated, except back.

D BASKETS.

	BLACK
wide.	\$18 00
front, 12 in. deep.	12 75
" 15 in. "	13 50
" 12 in. "	14 25
" 15 in. "	15 00
" 12 in. "	16 50
" 15 in. "	18 00

T IRON FENDERS.

Size	Each
ches long.	\$6 45
" "	7 50
" "	8 25
" "	7 50
" "	8 25
" "	9 00

IRON FENDERS.

h	Nos.	Each
00	662	\$24 00

IRON FIRE SETS.

Set	Nos.	Per Set
00	866	\$13 15
75	868	30 00
00	869	11 25
50	870	15 00
50	862 and 866 with brush, add to list,	\$2 25.
15		

PARK GUARDS.

	Each
inches deep.	\$4 35
" "	4 65
" "	5 40
" "	4 65
" "	5 10
" "	5 55

SPARK GUARDS.

Size	Each
Coppered, 24 inches wide.	\$2 70
" 30 " "	3 00
" 36 " "	3 30
Tinned, 24 " "	2 95
" 30 " "	3 25
" 36 " "	3 60
All brass, 24 " "	7 50
" 30 " "	8 25
" 36 " "	9 30

NURSERY GUARDS.

	Unlined
18 inches high, per nest,	\$8 95
24 " " "	9 75
30 " " "	10 50

FLAT BLACK SCREENS.

Nos.	Size	Each	Dozen
660	24x30 or 30x30 in., cut for andirons.	\$6 60	\$61 50
661	24x30 or 30x30 in., plain.	6 00	58 50

BLACK FOLDING SCREENS.

Nos.	Size	Each
643	41 in. wide, 24 in. high, 12 in. sides	\$7 50
644	41 " " 20 " " 12 " "	6 90
645	41 " " 18 " " 12 " "	6 60
646	35 " " 24 " " 12 " "	7 00
647	35 " " 20 " " 12 " "	6 50
648	35 " " 18 " " 12 " "	6 30
649	30 " " 24 " " 12 " "	6 40
650	30 " " 20 " " 12 " "	6 20
651	30 " " 18 " " 12 " "	6 00

FOUR FOLD BLACK SCREENS.

Nos.	Size	Each
640	24 in. high, 16 in. folds	\$10 50
641	20 " " 16 " "	9 30
642	18 " " 16 " "	8 70

DAMPERS.

Nos.	Width Front	Each
1	24 inches.	\$2 25
1	26 "	2 30
1	28 "	2 70
1	30 "	3 10
1	32 "	3 15
1	36 "	4 25
1	40 "	4 90
1	42 "	5 40
1	45 "	6 40
1	48 "	6 60
1	54 "	7 35
1	60 "	7 75
5	21 "	1 35
5	25 "	1 50
5	28 "	1 60
9	24 "	3 75
9	28 "	4 30
9	30 "	4 50
9	32 "	4 75
9	36 "	5 10
9	43 "	5 80
10	22 3/4 "	1 80
10	24 "	2 00
10	26 "	2 15
10	28 "	2 35

DOME DAMPERS.

Nos.	Front	Each
12	24 inches.	\$5 05
12	26 "	5 30
12	29 1/2 "	5 90
12	32 "	6 15
12	35 1/2 "	7 00
12	38 "	7 30
12	41 1/2 "	7 80
12	44 "	8 15
12	48 "	10 00
12	50 "	10 85
13	24 "	4 05
13	26 "	4 20
13	28 "	4 45
13	29 1/4 "	4 60
13	32 "	4 95
13	36 "	5 35

**IRON MANTEL TRIM-
AND HOB GRATES.**

plain, not exceeding 60 pair.....	\$4 50
with square or hammer heads, per pair.....	8 25
with round rivet heads,	7 50
shown in No. 1250, per	9 00
own in No. 1251 or 1245,	9 75
own in No. 1247 (not to ches), per pair.....	12 00
own in No. 1248 (not to ches), per pair.....	12 00
plain (using No. 1235 corner).....	6 00
s, with hammered or heads.....	8 25
own in No. 1245.....	10 50
own in No. 1246, including	21 00
own in No. 1248, including	12 00
1245, 36½ inches wide, red or square bolt heads	18 00
1245, 36½ inches, plain	15 00
setting.....	3 75
No. 1235, 17 tile.....	3 00
square or hammered bolt	5 65
l to list.....	30
plete	31 50
plete, with hob, hood, ane, corners, brackets..	48 00
Frame, with hood.....	28 50
Frame, with hood and ane	32 25
shown	15 00
h brass crown, as in No. 43	18 00
shown	25 50
h black crown, as in No. 42	24 00
black, plain corners, ex- pt crown in brass.....	22 50
black, plain corners, with o. 1242 crown in black..	21 00
ket, shown in No. 1246..	18 00
nd Basket, shown in No. 248	24 00
See Basket List.	

**OLD COLONIAL OR FRANKLIN
FIREPLACE.**

Corner Knobs are always in Brass.

Nos.		Each
1430	Frame only, with or without corner brackets, black.....	\$ 9 00
	Frame and summer piece, black.	12 00
	Frame only, black, with plated columns	10 65
	Frame black, with plated columns and summer piece black	14 25
	Frame only, plated.....	17 25
	Frame and summer piece, plated	23 70
1800	Frame black, with lining.....	20 65
	Frame black, with plated columns and black lining.....	23 63
	Frames plated and black lining.	28 90
	With No. 1514 basket, add to list	13 90
1398	Includes summer piece as shown in No. 1430.....	
	All black, with black ash screen.	17 00
	All black, with brass columns and balls.....	18 90
	With brass ash screen, add to list	1 80
	Frame and summer piece, plated; brass ash screen, black basket	26 35
	Ash screen attached to ash pan.	

ASH PIT DOORS.

Pattern	Opening	Each
Hinged Door.	8x12 inches.	\$2 20
" "	10x12 "	2 35
" "	12x12 "	2 50
" "	12x16 "	2 85
" "	14x20 "	3 30

GAS LOG REST.

Size	Each
10x8 inches.	\$0 90
12x8 "	90
14x8 "	1 00
16x8 "	1 05

IRON LININGS.

29½ inch High with 12 or 15-inch Sides
18-inch, \$1.50 extra. 20-inch, \$3.00 extra.
Wood fires require special made linings,
which cost extra according to weight.
For sizes above linings are made in, see
under illustrations.

Number	Width of Back	Price
1		
35		
36	20 inch.	\$ 8 75
40	24 inch.	10 80
42	27 inch.	12 75
66	30 inch.	14 25
72	36 inch.	19 50
75	40 inch.	30 00
100		
1625		
1626		
39		
63		
76		
89	20 inch.	8 50
90	24 inch.	9 60
91	27 inch.	11 00
92	30 inch.	13 25
93	36 inch.	19 50
95		
96		
1623		
1617	24 inch.	10 20
1618		
1619	24 inch.	11 50
52	24 inch.	11 50
1622	27 inch.	12 50
1616	36¾ inch.	30 00

ASH DUMPS.

Size	Each
Automatic (7x9)	\$0 90
Common (9x11)	1 00
Boston (7x10)	75
Peerless No. 1 (13x7)	2 35
Peerless No. 2 (13x9)	2 55
Peerless No. 3 (16x9)	3 00

