

NATIONAL stoves

offer
you a
real
source
of . . .

profit

CATALOGUE No. 49

EXCELSIOR STOVE & MANUFACTURING CO.

MANUFACTURERS

NATIONAL STOVES, RANGES, FURNACES AND STOKERS

QUINCY, ILLINOIS



OUR POLICY

TO DEVOTE OUR
ENERGY EXPERIENCE
AND RESOURCES IN
A FAITHFUL ENDEAVOR
TO SUPPLY OUR
CUSTOMERS WITH
STOVES, RANGES AND
FURNACES THAT WILL
PROVE WORTHY OF
THEIR RESPECT AND
CONFIDENCE AT FAIR
AND REASONABLE PRICES

EXCELSIOR STOVE & MFG. CO.
QUINCY, ILLINOIS

NATIONAL RANGES COOKING STOVES AND HEATERS

CATALOGUE No. 49



1940-1941

EXCELSIOR STOVE & MANUFACTURING CO.
MANUFACTURERS

NATIONAL STOVES, RANGES, FURNACES AND STOKERS

•
QUINCY, ILLINOIS

Artist National



Cast Iron Enameled Range
 For Hard Coal, Soft Coal or Wood
 Furnished with Straight Front or Top Feed

All improvements and refinements known to the art of good range making have been embodied in the Artist National. Patents have been allowed on structural features. Others are now pending. We specialize in proper size flue systems and fire boxes in every National Range to obtain greatest efficiency out of the least amount of fuel. An all cast iron range, scientifically constructed and leads all other makes in fuel saving and baking qualities. All joints and fittings are ash and dust tight.

Fuel saving and baking: Fuel saving and baking qualities of National Cooking Stoves and Ranges are well known throughout the world and the Artist National will uphold that meritorious reputation.

Oven: Large, square, high and roomy. Enameled sanitary oven side linings in front of cast plates are removable for cleaning. Enameled oven bottom. Oven door is well balanced and fitted with two coil springs and stayrite door hangers to prevent breakage. Provided with concealed bolts and door hinges. Improved bar handle with catch on oven door and tee style on ash and reservoir compartment doors.

Thermometer: A reliable thermometer is fitted in oven door to measure heat in oven, a convenience to operator and avoids bad luck when baking.

Top: Furnished with two, four or six 8-inch covers. Key plate raising attachment is a convenience for fueling and broiling. Nos. 2818, 2820, 8218 and 8220 have two 8-inch cooking holes and two key plates. Nos. 4818, 4820, 8418 and 8420 have four 8-inch cooking holes and one key plate. Nos. 6818 and 6820 have six 8-inch cooking holes. Top is polished and blued.

Fire Box: Oval fire box with interchangeable duplex bottom grates will burn either coal or wood.

Damper: Slide damper in top is used to control heat in oven and for heating water in reservoir. Can be renewed without dismantling range.

Reservoir: Made of heavy copper, tinned inside and fitted near bottom with swinging spout faucet. When reservoir tank is not wanted, reservoir section may be converted into a utility section with basket. Heats water by contact. Will bake and heat water at same time. Reservoir capacity, 5 gallons.

Water Heater: Arranged for Cast Water L Front or two pipe water front coil fitted in a cast iron shell.

Choice of Colors: Light Ivory and Blended Brown, Light Ivory and Blended Green, or White and Black. Specify color desired.



With Back Guard



With High Shelf



With High Closet

Specifications and Prices

		TOP FEED STYLE			
No.	Style	Oven	Top Surface	Weight	Price
8218 or 8418	Res. & B. G.	18x18x12	24½x42	485 lbs.	\$109.50
8218 or 8418	Res. & H. S.	18x18x12	24½x42	490 lbs.	114.38
8218 or 8418	Res. & H. C.	18x18x12	24½x42	530 lbs.	132.00
8220 or 8420	Res. & B. G.	20x20x13	26¾x44¼	570 lbs.	120.75
8220 or 8420	Res. & H. S.	20x20x13	26¾x44¼	575 lbs.	125.63
8220 or 8420	Res. & H. C.	20x20x13	26¾x44¼	615 lbs.	143.25
		STRAIGHT FRONT STYLE			
2818, 4818 or 6818	Res. & B. G.	18x18x12	24½x42	485 lbs.	\$109.50
2818, 4818 or 6818	Res. & H. S.	18x18x12	24½x42	490 lbs.	114.38
2818, 4818 or 6818	Res. & H. C.	18x18x12	24½x42	530 lbs.	132.00
2820, 4820 or 6820	Res. & B. G.	20x20x13	26¾x44¼	570 lbs.	120.75
2820, 4820 or 6820	Res. & H. S.	20x20x13	26¾x44¼	575 lbs.	125.63
2820, 4820 or 6820	Res. & H. C.	20x20x13	26¾x44¼	615 lbs.	143.25
If wanted without reservoir, deduct.....					3.75
If wanted with cabinet base, add.....					11.25
Two pipe water front coil fitted in range, extra.....					2.63
Two pipe water front coil separate from range, extra.....					3.38
Cast water L front fitted in range, extra.....					7.05
Cast water L front separate from range, extra.....					8.55
Back Guard separate from range, extra.....					8.25
High Shelf separate from range, extra.....					13.13
High Closet separate from range, extra.....					30.75

NATIONAL RANGES ARE BEST BY TEST

Abbey National



Three Fuel Oven Combination Range

For Coal, Wood, Natural, Bottled or Manufactured Gas

The most practical combination range on the market. Designed especially to obtain more oven space and eliminate the ever-troublesome baffle plate in oven. Entire oven space (3888 cubic inches) is available for baking when either gas or coal is used as fuel. The large U shaped burner does not enter either the oven or coal flues. Heat enters oven through a series of flues on four sides and is distributed evenly at desired temperatures. No Cold Spots in Oven. After gas heat has circulated through oven, it is discharged into smoke flue through automatic vent opening in rear of oven. This not only saves gas but increases flow of heat around the oven. Enameled side oven linings, easily removable for cleaning and blue polished oven bottom are not only sanitary but serviceable as well. Ventilating damper is controlled automatically with oven gas cock handle. Oven heat control regular equipment. Insulated oven doors. A utility basket is fitted in right end of range for storage space. When coal or wood is used as a fuel, a heavy copper tinned reservoir tank, tinned inside, can be furnished.

Top: Outer rim, closed gas top, burner cups, burner caps and grids are finished in porcelain enamel. Coal top is blued and polished. A cast iron fuel saving burner of special design is used to obtain the benefit and efficiency of all the B.T.U.'s in the gas being used. Change in location of burners unnecessary for different kinds of gas. Equipped with Hi-Lo gas saving burners. All burners drilled to eliminate clogging.

Reservoir: Abbey National can be furnished with a Heavy Copper Tinned Inside Reservoir Boiler, fitted with a swinging spout faucet, which heats by contact when using coal or wood as a fuel.

Choice of Color: White or Ivory.

Water Heater: Arranged for two pipe water front coil or cast water L front. Heats more water and does not interfere with baking.



With Back Guard



With High Shelf



With High Closet

Specifications and Prices

No.	Style	Size Top	Size Coal Top	Size Gas Top	Utility Top	Oven	Extreme Height	Weight	Price
2818	Back Guard	24 1/2 x 42	14 x 24 1/2	18 x 24 1/2	10 x 24 1/2	18 x 18 x 12	41 3/4	590 lbs.	\$150.00
2818	High Shelf	24 1/2 x 42	14 x 24 1/2	18 x 24 1/2	10 x 24 1/2	18 x 18 x 12	52 1/4	620 lbs.	157.13
2818	High Closet	24 1/2 x 42	14 x 24 1/2	18 x 24 1/2	10 x 24 1/2	18 x 18 x 12	61	660 lbs.	174.75

Cast Water L front fitted in range, extra.....	7.05
Cast Water L front separate from range, extra.....	8.55
Two pipe water front coil fitted in range, extra.....	2.62
Two pipe water front coil separate from range, extra.....	3.37
If wanted with copper reservoir tank instead of utility basket, extra.....	3.75
If wanted with Broiler, extra.....	6.00
Back Guard ordered separate from range, extra.....	6.00
High Shelf ordered separate from range, extra.....	13.13
High Closet ordered separate from range, extra.....	30.75

STATE KIND OF GAS USED

NATIONAL RANGES COST LESS THAN YOU EXPECT TO PAY

Archer National



With Back Guard



With High Shelf



With High Closet

Cast Iron Enameled Range

For Hard Coal, Soft Coal or Wood

Furnished with Straight Front, Top Feed or Pouch Feed

The latest model of all balanced ranges, pleasing to the eye, modern design, embodying every feature known to stove craft for the user's convenience. Beautiful color enamel, easy to clean and most sanitary.

Oven: Large, square, high and roomy. Enameled oven side linings in front of cast plates are removable for cleaning. Enameled oven bottom. All oven plates are properly fitted, making oven dust and ash proof. Oven door is well balanced and fitted with two coil springs and stayrite door hangers to prevent breakage. Fitted with concealed bolts and door hinges. Improved bar handle with catch on oven door and tee style on ash and reservoir compartment doors.

Thermometer: A reliable thermometer is fitted in oven door to measure heat in oven, a convenience to operator and avoids bad luck when baking.

Top: Furnished with two, four or six 8-inch covers. Key plate raising attachment is a convenience for fueling and broiling. Nos. 218, 220, 2818, 2820, 8218 and 8220 have two 8-inch cooking holes and two key plates. Nos. 418, 420, 4818, 4820, 8418 and 8420 have four 8-inch cooking holes and one key plate. Nos. 6818, 6820, 8618 and 8620 have six 8-inch cooking holes. Top is polished and blued.

Fire Box: Oval fire box consists of interchangeable fireback and left end front grate, a convenience to equalize the wearing parts. Duplex grates are exceptionally heavy and interchangeable from right to left.

Damper: Slide damper in top is used to control heat in oven and for heating water in reservoir. Can be renewed without dismantling range.

Reservoir: Made of heavy copper, tinned inside and fitted near bottom with swinging spout faucet. When reservoir tank is not wanted, reservoir section may be converted into a utility section with basket. Heats water by contact. Will bake and heat water at same time. Reservoir capacity, 5 gallons.

Water Heater: Arranged for Cast Water L Front or two pipe water front coil fitted in cast iron shell.

Choice of Colors: Light Ivory and Blended Brown, Light Ivory and Blended Green, or White and Black. Specify color desired.

Specifications and Prices

No.	Style	Oven	Top Surface	Weight	Price
2218, 8418 or 8618	Res. & B. G.	18x18x12	24 1/2 x 42	485 lbs.	\$104.63
8218, 8418 or 8618	Res. & H. S.	18x18x12	24 1/2 x 42	490 lbs.	109.50
8218, 8418 or 8618	Res. & H. C.	18x18x12	24 1/2 x 42	530 lbs.	127.13
8220, 8420 or 8620	Res. & B. G.	20x20x13	26 3/4 x 44 1/4	570 lbs.	117.38
8220, 8420 or 8620	Res. & H. S.	20x20x13	26 3/4 x 44 1/4	575 lbs.	122.25
8220, 8420 or 8620	Res. & H. C.	20x20x13	26 3/4 x 44 1/4	615 lbs.	139.88
POUCH FRONT STYLE					
STRAIGHT FRONT STYLE					
2818, 4818 or 6818	Res. & B. G.	18x18x12	24 1/2 x 42	485 lbs.	104.63
2818, 4818 or 6818	Res. & H. S.	18x18x12	24 1/2 x 42	490 lbs.	109.50
2818, 4818 or 6818	Res. & H. C.	18x18x12	24 1/2 x 42	530 lbs.	127.13
2820, 4820 or 6820	Res. & B. G.	20x20x13	26 3/4 x 44 1/4	570 lbs.	117.38
2820, 4820 or 6820	Res. & H. S.	20x20x13	26 3/4 x 44 1/4	575 lbs.	122.25
2820, 4820 or 6820	Res. & H. C.	20x20x13	26 3/4 x 44 1/4	615 lbs.	139.88
TOP FEED STYLE					
218 or 418	Res. & B. G.	18x18x12	24 1/2 x 42	485 lbs.	104.63
218 or 418	Res. & H. S.	18x18x12	24 1/2 x 42	490 lbs.	109.50
218 or 418	Res. & H. C.	18x18x12	24 1/2 x 42	530 lbs.	127.13
220 or 420	Res. & B. G.	20x20x13	26 3/4 x 44 1/4	570 lbs.	117.38
220 or 420	Res. & H. S.	20x20x13	26 3/4 x 44 1/4	575 lbs.	122.25
220 or 420	Res. & H. C.	20x20x13	26 3/4 x 44 1/4	615 lbs.	139.88
If wanted without reservoir, deduct.....					
If wanted with cabinet base, add.....					
Two pipe water front coil fitted in range, extra.....					
Two pipe water front coil separate from range, extra.....					
Cast water L front fitted in range, extra.....					
Cast water L front separate from range, extra.....					
Back Guard ordered separate from range, extra.....					
High Shelf ordered separate from range, extra.....					
High Closet ordered separate from range, extra.....					

Amber National



Three Fuel Oven Combination Range

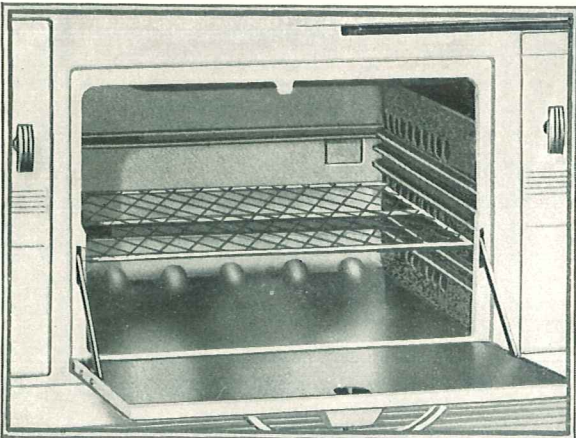
For Coal, Wood, Natural, Bottled, or Manufactured Gas

The most practical combination range on the market. Designed especially to obtain more oven space and eliminate the ever-troublesome baffle plate in oven. Entire oven space (3888 cubic inches) is available for baking when either gas or coal is used as fuel. The large U shaped burner does not enter either the oven or coal flues. Heat enters oven through a series of flues on four sides and is distributed evenly at desired temperatures. No Cold Spots in Oven. After gas heat has circulated through oven, it is discharged into smoke flue through automatic vent opening in rear of oven. This not only saves gas but increases flow of heat around the oven. Enameled side oven linings, easily removable for cleaning and blue polished oven bottom are not only sanitary but serviceable as well. Ventilating damper is controlled automatically with oven gas cock handle. Oven heat control regular equipment. Insulated oven doors.

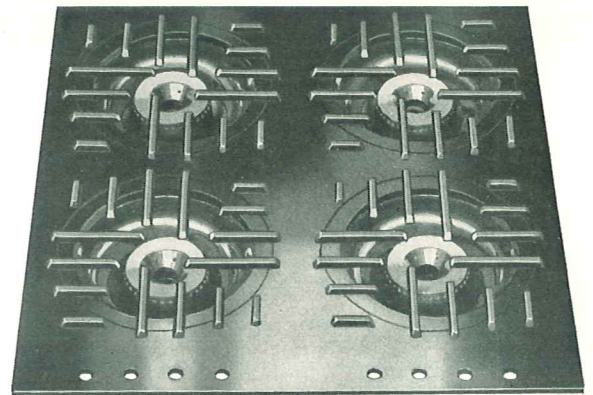
Top: Outer rim, closed gas top, burner cups, burner caps and grids are finished in porcelain enamel. Coal top is blued and polished. A cast iron fuel saving burner of special design is used to obtain the benefit and efficiency of all the B. T. U.'s in the gas being used. Change in location of burners unnecessary for different kinds of gas. Equipped with Hi-Lo gas saving burners. All burners drilled to eliminate clogging.

Choice of Color: White or Ivory.

Water Heater: Arranged for two pipe water front coil or cast water L front. Heats more water and does not interfere with baking.



For
GAS,
HARD COAL,
SOFT COAL
or WOOD



Specifications and Prices

No.	Style	Size Top	Size Coal Top	Size Gas Top	Oven	Extreme Height	Weight	Price
4818	Back Guard	24½x42	21½x24½	20½x24½	18x18x12	41¾	565 lbs.	\$150.00
4818	High Shelf	24½x42	21½x24½	20½x24½	18x18x12	52¼	585 lbs.	157.12
4818	High Closet	24½x42	21½x24½	20½x24½	18x18x12	61	630 lbs.	174.75
	Cast Water L Front fitted in range, extra.....							7.05
	Cast Water L Front separate from range, extra.....							8.55
	Two pipe water front coil fitted in range, extra.....							2.62
	Two pipe water front coil separate from range, extra.....							3.37
	If wanted with Broiler, extra.....							6.00
	Back Guard separate from range, extra.....							6.00
	High Shelf separate from range, extra.....							13.13
	High Closet separate from range, extra.....							30.75

STATE KIND OF GAS USED

STYLE, FINISH AND QUALITY UNSURPASSED

Ardent National



With Back Guard



With High Shelf



With High Closet

Cast Iron Enameled Range
For Hard Coal, Soft Coal or Wood

Furnished with Straight Front, Top Feed or Pouch Feed

An entirely new up-to-date, all cast iron range of pleasing design. Fire box and flue system constructed to obtain greatest cooking and baking capacity with least amount of fuel. A perfect baker and so constructed that fire box linings may be removed to install two regular size oil burners.

Oven: Large, square, high and roomy. Enameled sanitary oven side linings in front of cast plates are removable for cleaning. Enameled oven bottom. All oven plates are properly fitted, making oven dust and ash proof. Oven door is well balanced and fitted with two coil springs and stayrite door hangers to prevent breakage. Fitted with concealed bolts and door hinges. Improved bar handle with catch on oven door and tee style on ash door.

Thermometer: A reliable thermometer is fitted in oven door to measure heat in oven, a convenience to operator and avoids bad luck when baking.

Top: Furnished with two, four or six 8-inch covers. Key plate raising attachment is a convenience for fueling and broiling. Nos. 218, 220, 2818, 2820, 8218 and 8220 have two 8-inch cooking holes and two key plates. Nos. 418, 420, 4818, 4820, 8418 and 8420 have four 8-inch cooking holes and one key plate. Nos. 6818, 6820, 8618 and 8620 have six 8-inch cooking holes. Top is polished and blued.

Fire Box: Oval fire box consists of interchangeable fireback and left end front grate, a convenience to equalize the wearing parts. Duplex grates are exceptionally heavy and interchangeable from right to left.

Damper: Slide damper in top is used to control heat in oven. Can be renewed without dismantling range.

Water Heater: Arranged for Cast Water L Front or two pipe water front coil fitted in cast iron shell.

Choice of Colors: Light Ivory and Blended Brown, Light Ivory and Blended Green, or White and Black. Specify color desired.

Specifications and Prices

No.	Style	Weight	Price
POUCH FRONT STYLE			
	Oven	Top Surface	
8218, 8418 or 8618	Sq. & B. G.	24 1/2 x 34 1/2	420 lbs. \$ 90.38
8218, 8418 or 8618	Sq. & H. S.	18x18x12	430 lbs. 93.00
8218, 8418 or 8618	Sq. & H. C.	18x18x12	475 lbs. 105.38
8220, 8420 or 8620	Sq. & B. G.	20x20x13	470 lbs. 100.13
8220, 8420 or 8620	Sq. & H. S.	20x20x13	480 lbs. 102.75
8220, 8420 or 8620	Sq. & H. C.	20x20x13	525 lbs. 115.13
STRAIGHT FRONT STYLE			
2818, 4818 or 6818	Sq. & B. G.	18x18x12	420 lbs. 90.38
2818, 4818 or 6818	Sq. & H. S.	18x18x12	430 lbs. 93.00
2818, 4818 or 6818	Sq. & H. C.	18x18x12	475 lbs. 105.38
2820, 4820 or 6820	Sq. & B. G.	20x20x13	470 lbs. 100.13
2820, 4820 or 6820	Sq. & H. S.	20x20x13	480 lbs. 102.75
2820, 4820 or 6820	Sq. & H. C.	20x20x13	525 lbs. 115.13
TOP FEED STYLE			
218 or 418	Sq. & B. G.	18x18x12	420 lbs. 90.38
218 or 418	Sq. & H. S.	18x18x12	430 lbs. 93.00
218 or 418	Sq. & H. C.	18x18x12	475 lbs. 105.38
220 or 420	Sq. & B. G.	20x20x13	470 lbs. 100.13
220 or 420	Sq. & H. S.	20x20x13	480 lbs. 102.75
220 or 420	Sq. & H. C.	20x20x13	525 lbs. 115.13
Two pipe water front coil fitted in range, extra.....			2.63
Two pipe water front coil separate from range, extra.....			3.38
Cast water L front fitted in range, extra.....			7.05
Cast water L front separate from range, extra.....			8.55
Back Guard ordered separate from range, extra.....			8.25
High Shelf ordered separate from range, extra.....			10.88
High Closet ordered separate from range, extra.....			23.25

ORIGINAL IN DESIGN AND CONSTRUCTION

Adonis National



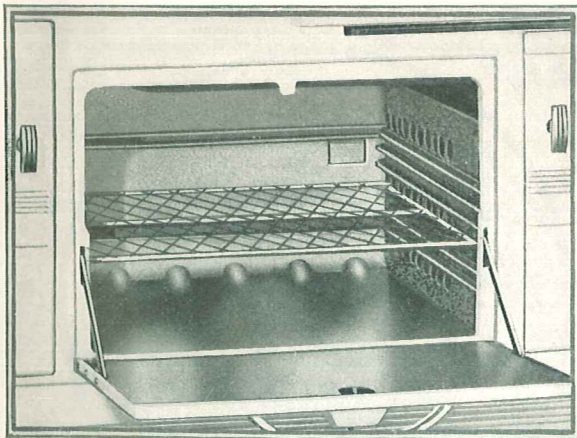
Three Fuel Oven Combination Range
For Coal, Wood, Natural, Bottled or Manufactured Gas

The most practical combination range on the market. Designed especially to obtain more oven space and eliminate the ever-troublesome baffle plate in oven. Entire oven space (3888 cubic inches) is available for baking when either gas or coal is used as fuel. The large U shaped burner does not enter either the oven or coal flues. Heat enters oven through a series of flues on four sides and is distributed evenly at desired temperatures. No Cold Spots in Oven. After gas heat has circulated through oven, it is discharged into smoke flue through automatic vent opening in rear of oven. This not only saves gas but increases flow of heat around the oven. Enameled side oven linings, easily removable for cleaning and blue polished oven bottom are not only sanitary but serviceable as well. Ventilating damper is controlled automatically with oven gas cock handle. Oven heat control regular equipment. Insulated oven doors.

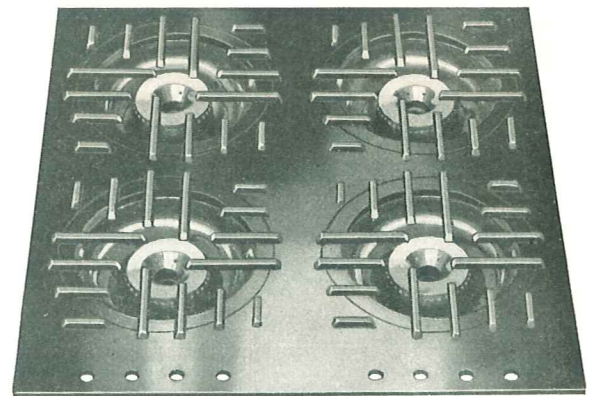
Top: Outer rim, closed gas top, burner cups, burner caps and grids are finished in porcelain enamel. Coal top is blued and polished. A cast iron fuel saving burner of special design is used to obtain the benefit and efficiency of all the B.T.U.'s in the gas being used. Change in location of burners unnecessary for different kinds of gas. Equipped with Hi-Lo gas saving burners. All burners drilled to eliminate clogging.

Choice of Color: White or Ivory.

Water Heater: Arranged for two pipe water front coil or cast water L front. Heats more water and does not interfere with baking.



For
GAS,
HARD COAL,
SOFT COAL
or WOOD



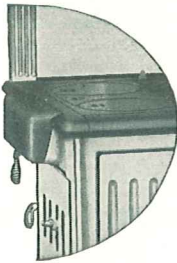
Specifications and Prices

No.	Style	Size Top	Size Coal Top	Size Gas Top	Oven	Extreme Height	Weight	Price
2818	Back Guard	24 1/2 x 34 3/4	24 1/2 x 14	24 1/2 x 20	18x18x12	41 3/4	525 lbs.	\$138.00
2818	High Shelf	24 1/2 x 34 3/4	24 1/2 x 14	24 1/2 x 20	18x18x12	52	550 lbs.	142.87
2818	High Closet	24 1/2 x 34 3/4	24 1/2 x 14	24 1/2 x 20	18x18x12	61	575 lbs.	155.25
	Cast Water L Front fitted in range, extra							7.05
	Cast Water L Front separate from range, extra							8.55
	Two pipe water front coil fitted in range, extra							2.62
	Two pipe water front coil separate from range, extra							3.37
	If wanted with Broiler, extra							6.00
	Back Guard separate from range, extra							8.25
	High Shelf separate from range, extra							10.88
	High Closet separate from range, extra							23.25

STATE KIND OF GAS USED

PERFECT SATISFACTION GUARANTEED

National Range Features



Sectional view showing Pouch Feed Door on Archer and Ardent Nationals.

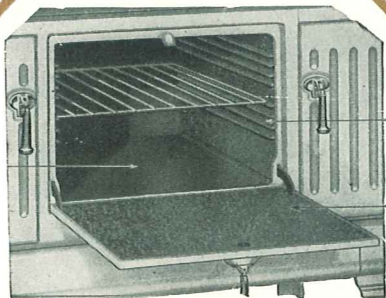


Top of Artist National with top feed and four covers. May also be furnished with two covers and remainder solid plates. Top Feed can be had on Archer and Ardent National.

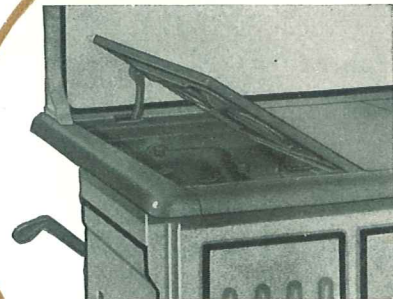
Nationals afford profitable opportunity, by quick turnovers, and contribute the greatest margin of profit to your business.

All Models are
Furnished in Choice of
Color Combinations
Indicated. Specify
Which is Desired
When Ordering

The real success of Nationals is due to the general recognition of the superior quality in their manufacture.



Interior View of Oven showing Enameled Cast Oven Bottom. Sanitary Enameled Oven Linings and Enameled Oven Door Lining.

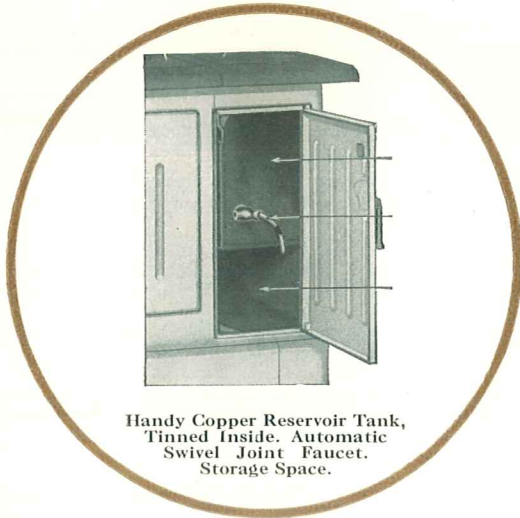


Key Plate Raising Attachment—a convenience for fueling and broiling. Operated by handle. Simple and efficient.

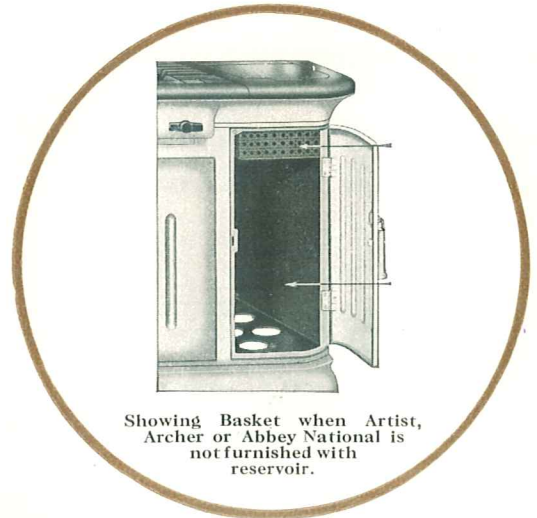
Features of latest development are embodied in the construction and production of all Nationals

NATIONAL RANGES—EVERY ACTION GIVES SATISFACTION

National Range Features

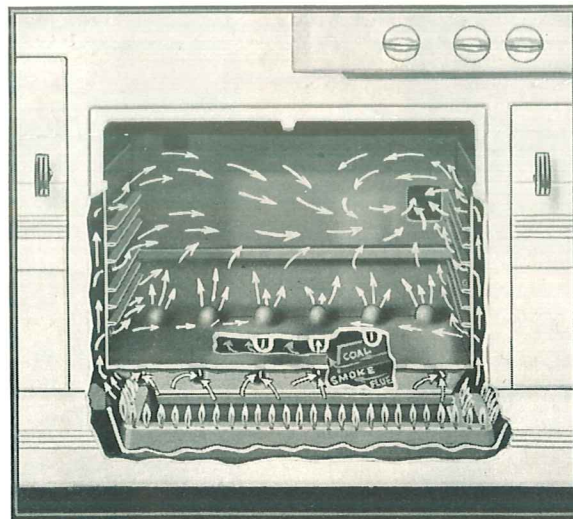


Handy Copper Reservoir Tank, Tinned Inside. Automatic Swivel Joint Faucet. Storage Space.



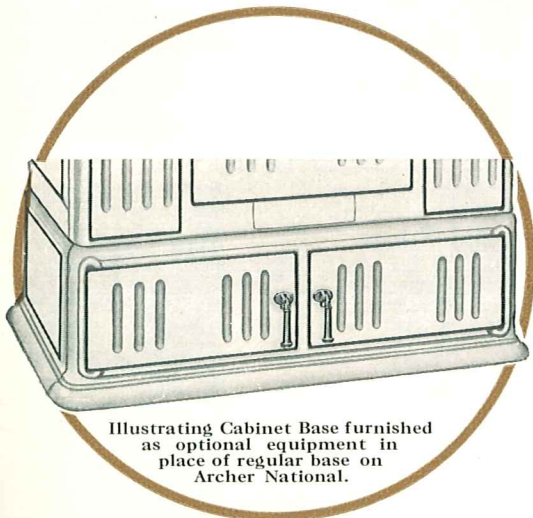
Showing Basket when Artist, Archer or Abbey National is not furnished with reservoir.

The thoroughness with which every National range is constructed assures extra long life.

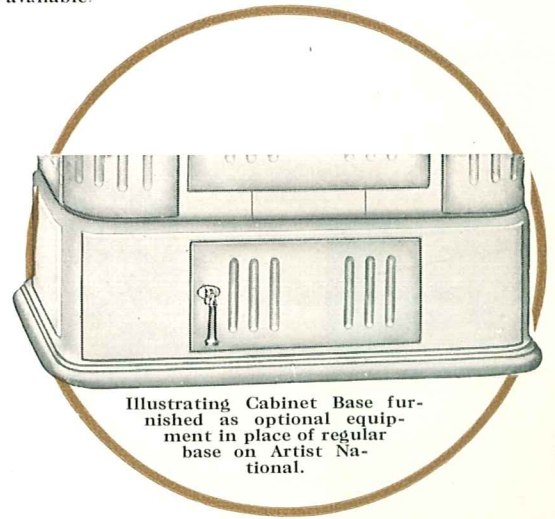


Interior view of oven on Amber, Adonis and Abbey National's showing heat travel. No changes to make from coal to gas. No baffle plate. No cold spots. All space available.

Nationals attract—stimulate the desire and strengthen the resolve to buy.



Illustrating Cabinet Base furnished as optional equipment in place of regular base on Archer National.



Illustrating Cabinet Base furnished as optional equipment in place of regular base on Artist National.

The National Line contains a style and size to meet any stove or range requirement.

NATIONALS ARE MOST DEPENDABLE

Rapid National

Cast Iron Enameled Range
For Hard Coal, Soft Coal or Wood



Reservoir and High Shelf

An up-to-date, new design, very high grade, all cast iron range made in White or Ivory finish. Fire box and flue system so constructed to use the least amount of fuel and insure perfect baking.

Oven: Oven plates made and assembled to prevent any ash leaks and allow for expansion and contraction. Oven door equipped with two invisible springs and stayrite door hanger.

Top: Furnished with two, four or six 8-inch covers. No. 8218 has two 8-inch cooking holes and two solid key plates. No. 8418 has four 8-inch cooking holes and one solid key plate. No. 8618 has six 8-inch cooking holes. Top is polished and blued.

Fire Box: Fire Box is oval and linings are exceptionally heavy. Curved front grates will give more service. Bottom grates are interchangeable and can be used for coal or wood. Porcupine fire back used in construction is far superior to other styles and cannot be surpassed in fuel saving or economy.

Reservoir: Made of heavy copper, tinned inside, and heats by contact. Our system permits the operator to heat water and bake at the same time, a convenience not to be overlooked.

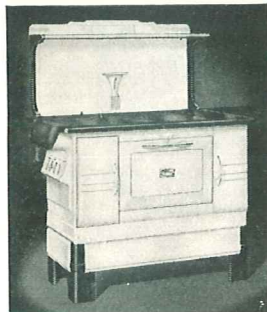
Choice of Colors: White or Ivory Enamel.



Square and High Shelf



With Back Guard



With High Shelf



With High Closet

Specifications and Prices

No.	Style	Oven	TOP SURFACE		WEIGHT		PRICE	
			Less Res.	With Res.	Less Res.	With Res.	Less Res.	With Res.
8218, 8418 or 8618	With Back Guard	18x18x11 $\frac{1}{2}$	25 $\frac{1}{2}$ x37	25 $\frac{1}{2}$ x40	408 lbs.	444 lbs.	\$82.12	\$91.50
8218, 8418 or 8618	With High Shelf	18x18x11 $\frac{1}{2}$	25 $\frac{1}{2}$ x37	25 $\frac{1}{2}$ x40	435 lbs.	470 lbs.	87.00	98.62
8218, 8418 or 8618	With High Closet	18x18x11 $\frac{1}{2}$	25 $\frac{1}{2}$ x37	25 $\frac{1}{2}$ x40	470 lbs.	509 lbs.	99.37	116.25

Cast Water L Front fitted, extra.....	\$ 7.05
Cast Water L Front separate from range, extra.....	8.55
Two pipe Water Front Coil fitted, extra.....	2.63
Two pipe Water Front Coil separate from range, extra.....	3.38
Gas hot plate fitted in 18" size square range, extra.....	9.37
Gas hot plate separate from 18" size square range, extra.....	10.87
Electric hot plate fitted in 18" size square range, extra.....	11.62
Electric hot plate separate from 18" size square range, extra.....	13.12
Back Guard ordered separate from range, extra.....	6.00
High Shelf for square style range, ordered separate, extra.....	10.87
High Shelf for reservoir style range, ordered separate, extra.....	13.12
High Closet for square style range, ordered separate, extra.....	23.25
High Closet for reservoir style range, ordered separate, extra.....	30.75

COMPLETE IN EVERY DETAIL

Newart National



With Swing Oven Door

Cast Iron Enameled Range—Blue Polished Top

For Hard Coal, Soft Coal or Wood

A medium priced enameled adaptable balanced range with swing or drop oven door. The only range of its kind where reservoir is attached to range and having appearance of a full balanced range. Compact, still having adequate top space for cooking needs of average home. Flue system provides even heat throughout entire range with smallest amount of fuel. Extra large flues eliminate frequent cleaning. Six 8-inch covers heated at all times with damper either open or closed.

Oven: Oven top is convexed which increases life of oven top casting as well as covers and centers, insuring at same time smooth draft around oven. All connections properly made to prevent any sifting of ashes into oven.

Fire Box: Oval fire box prevents accumulation of ashes in corners of fire box and heats oven more uniformly and lengthens life of linings. Porcupine fire back used in construction is far superior to other styles and cannot be surpassed in fuel saving or economy.

Reservoir: Made of heavy copper tinned inside and heats by contact. This system of heating water permits operator to bake and heat water in reservoir simultaneously on same amount of fuel, a feature of convenience and economy which should not be overlooked.

Dampers: Pull up damper operates from front of range and can be replaced at any time without dismantling range.

Water Heater: Arranged for two pipe water back coil or cast water L front. They do not interfere with baking.

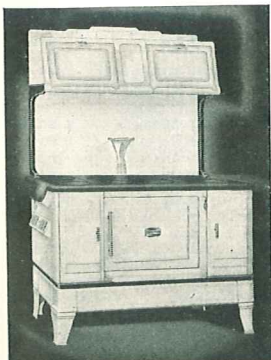
Choice of Colors: Stippled Sun Tan or White and Black Trim Enamel. Specify color desired.



With Back Guard



With High Shelf



With High Closet

Specifications and Prices

DROP OVEN DOOR STYLE

No.	Style	Oven	Top Surface	Weight	Price
6818	Res. & Back Guard	18x18x11½	25½x39½	400 lbs.	\$ 86.25
6818	Res. & High Shelf	18x18x11½	25½x39½	426 lbs.	91.13
6818	Res. & High Closet	18x18x11½	25½x39½	470 lbs.	108.75
6820	Res. & Back Guard	20x20x11½	27½x41	430 lbs.	92.25
6820	Res. & High Shelf	20x20x11½	27½x41	460 lbs.	97.13
6820	Res. & High Closet	20x20x11½	27½x41	500 lbs.	114.75

SWING OVEN DOOR STYLE

1886	Res. & Back Guard	18x18x11½	25½x39½	400 lbs.	\$ 86.25
1886	Res. & High Shelf	18x18x11½	25½x39½	426 lbs.	91.13
1886	Res. & High Closet	18x18x11½	25½x39½	470 lbs.	108.75
2086	Res. & Back Guard	20x20x11½	27½x41	430 lbs.	92.25
2086	Res. & High Shelf	20x20x11½	27½x41	460 lbs.	97.13
2086	Res. & High Closet	20x20x11½	27½x41	500 lbs.	114.75

Cast Water L Fitted in Range, extra.....	7.05
Cast Water L separate from range, extra.....	8.55
Two Pipe Coil, extra.....	2.63
Back Guard ordered separate from range, extra.....	8.25
High Shelf ordered separate from range, extra.....	13.13
High Closet ordered separate from range, extra.....	30.75

MAKE FOR BETTER HOUSEKEEPING

Nord and Nordic Nationals



Nordic National
With Swing Oven Door

**Enameled Cast Range with Blue Polished Top
For Hard Coal, Soft Coal or Wood**

An entirely new creation in a cooking range with all features embodied to make it simple for the operator. Two flue system, which has been used in National construction for many years is still adhered to. It equalizes the heat to all parts of the oven, and no matter whether damper is opened or closed, the heat will pass under the six covers, a convenience where a great amount of cooking is done. Flues are extra large and adaptable to use hard or soft coal and wood. Top is provided with removable cast elbow, which permits range to pass through an ordinary door. Cut tops, ribbed covers and centers increase the efficiency and lasting qualities many times. Six eight-inch cooking holes.

Oven: Oven top is convexed, which increases the life of the oven top casting and allows a very large flue space. All connections are properly made to prevent any sifting of ashes into the oven. Inside of oven is aluminized.



Nord National
With Drop Oven Door

Fire Box: Oval fire box prevents accumulation of ashes in corners of fire box and heats oven more uniformly and lengthens the life of the linings. The proupcine fire back as constructed in this range cannot be surpassed for economy and fuel saving.

Reservoir: Made of heavy copper, tinned inside and heats by contact. Our system permits the operator to bake and heat water at the same time—a convenience not to be overlooked.

Dampers: Pull up damper operates from front of range and can be replaced at any time without dismounting range.

Water Heater: Arranged for two pipe water back coil or a cast water L front. They do not interfere with baking.

Choice of Colors: White and Black, Stippled Suntan or Stippled Soft Green Enamel. Specify color desired.

The Nord and Nordic National are identical, except that Nordic National has swing oven door and Nord National has a drop oven door.

Specifications and Prices

NORD NATIONAL WITH DROP OVEN DOOR

No.	Style	Oven	TOP SURFACE		WEIGHT		PRICE	
			Less Res.	With Res.	Less Res.	With Res.	Less Res.	Cop. Res.
8618	Back Guard	18x18x11 1/2	25 1/2 x 37	25 1/2 x 42	350 lbs.	415 lbs.	\$70.50	\$ 85.88
8618	High Shelf	18x18x11 1/2	25 1/2 x 37	25 1/2 x 42	390 lbs.	450 lbs.	75.75	91.13
8618	High Closet	18x18x11 1/2	25 1/2 x 37	25 1/2 x 42	430 lbs.	490 lbs.	88.13	103.50
8620	Back Guard	20x20x12	27 1/2 x 40	27 1/2 x 47	390 lbs.	450 lbs.	76.50	91.88
8620	High Shelf	20x20x12	27 1/2 x 40	27 1/2 x 47	420 lbs.	480 lbs.	81.75	97.13
8620	High Closet	20x20x12	27 1/2 x 40	27 1/2 x 47	460 lbs.	520 lbs.	94.13	109.50

NORDIC NATIONAL WITH SWING OVEN DOOR

8618	Back Guard	18x18x11 1/2	25 1/2 x 37	25 1/2 x 42	350 lbs.	415 lbs.	\$70.50	\$ 85.88
8618	High Shelf	18x18x11 1/2	25 1/2 x 37	25 1/2 x 42	390 lbs.	450 lbs.	75.75	91.13
8618	High Closet	18x18x11 1/2	25 1/2 x 37	25 1/2 x 42	430 lbs.	490 lbs.	88.13	103.50
8620	Back Guard	20x20x12	27 1/2 x 40	27 1/2 x 47	390 lbs.	450 lbs.	76.50	91.88
8620	High Shelf	20x20x12	27 1/2 x 40	27 1/2 x 47	420 lbs.	480 lbs.	81.75	97.13
8620	High Closet	20x20x12	27 1/2 x 40	27 1/2 x 47	450 lbs.	520 lbs.	94.13	109.50

Cast water L front fitted in range, extra.....	7.05
Cast water L front separate from range, extra.....	8.55
Two pipe water back coil, extra.....	2.63
Gas hot plate fitted in 18" size square range, extra.....	9.37
Gas hot plate separate from 18" size square range, extra.....	10.87
Electric hot plate fitted in 18" size square range, extra.....	11.62
Electric hot plate separate from 18" size square range, extra.....	13.12
Copper reservoir ordered separate from range, extra.....	16.50
High Shelf ordered separate from range, extra.....	10.88
High Closet ordered separate from range, extra.....	23.25
If wanted without back guard, deduct.....	5.63

COOK THEIR WAY INTO POPULARITY

Nector and Nabob Nationals

All Cast Iron Plain Finish Range
For Hard Coal, Soft Coal or Wood

An entirely new cooking range with all features embodied to make it simple for the operator. Two flue system, which has been used in National construction for many years is still adhered to. It equalizes the heat to all parts of the oven, and no matter whether damper is opened or closed, the heat will pass under the six covers—a convenience where a great amount of cooking is done. Flues are extra large and adaptable to use hard or soft coal and wood. Top is provided with removable cast elbow which permits range to pass through an ordinary door. Cut tops, ribbed covers and centers increase the efficiency and lasting qualities many times. Six eight-inch cooking holes.

Oven: Oven top is convex, which increases the life of the oven top casting and allows a very large flue space. All connections are properly made to prevent any sifting of ashes into the oven.

Fire Box: Oval fire box prevents accumulation of ashes in corners of fire box and heats oven more uniformly and lengthens the life of the linings. Porcupine fire back used in the construction of this range cannot be surpassed for economy and fuel saving.



Nector National
With Drop Oven Door

Reservoir: Made of galvanized iron or copper as desired and heats by contact. Our system permits the operator to bake and heat water at the same time—a convenience not to be overlooked.

Dampers: Pull up damper operates from front of range and can be replaced at any time without dismounting range.

Water Heater: Arranged for two pipe water back coil or a cast water L front. They do not interfere with baking.

The Nector National and Nabob National are identical, except that the Nector National has drop oven door and Nabob National a swing oven door.

May be furnished with plain panels, not enameled, in oven door and on high shelf and high closet splasher backs at slightly lower prices. When furnished thus equipped, Nector National becomes Novo National and Nabob National carries the name Nome National.



Nector National
With Drop Oven Door

Specifications and Prices

No.	Style	Oven	TOP SURFACE		WEIGHT		Less Res.	PRICE		Cop. Res.
			Less Res.	With Res.	Less Res.	With Res.		Galv. Res.		
NECTOR NATIONAL WITH DROP OVEN DOOR										
8618	Back Guard	18x18x11 1/2	25 1/2 x 37	25 1/2 x 42	350 lbs.	415 lbs.	\$53.63	\$63.37	\$66.75	
8618	High Shelf	18x18x11 1/2	25 1/2 x 37	25 1/2 x 42	390 lbs.	450 lbs.	62.63	72.37	75.75	
8618	High Closet	18x18x11 1/2	25 1/2 x 37	25 1/2 x 42	430 lbs.	490 lbs.	68.25	78.00	81.38	
8620	Back Guard	20x20x12	27 1/2 x 40	27 1/2 x 47	390 lbs.	450 lbs.	58.13	67.87	71.25	
8620	High Shelf	20x20x12	27 1/2 x 40	27 1/2 x 47	420 lbs.	480 lbs.	67.13	76.87	80.25	
8620	High Closet	20x20x12	27 1/2 x 40	27 1/2 x 47	460 lbs.	520 lbs.	72.75	82.50	85.88	
NABOB NATIONAL WITH SWING OVEN DOOR										
8618	Back Guard	18x18x11 1/2	25 1/2 x 37	25 1/2 x 42	350 lbs.	415 lbs.	\$53.63	\$63.37	\$66.75	
8618	High Shelf	18x18x11 1/2	25 1/2 x 37	25 1/2 x 42	390 lbs.	450 lbs.	62.63	72.37	75.75	
8618	High Closet	18x18x11 1/2	25 1/2 x 37	25 1/2 x 42	430 lbs.	490 lbs.	68.25	78.00	81.38	
8620	Back Guard	20x20x12	27 1/2 x 40	27 1/2 x 47	390 lbs.	450 lbs.	58.13	67.87	71.25	
8620	High Shelf	20x20x12	27 1/2 x 40	27 1/2 x 47	420 lbs.	480 lbs.	67.13	76.87	80.25	
8620	High Closet	20x20x12	27 1/2 x 40	27 1/2 x 47	460 lbs.	520 lbs.	72.75	82.50	85.88	
Cast water L front fitted in range, extra 7.05 Cast Water L front separate from range, extra 8.55 Two pipe water back coil, extra 2.63 Gas Hot Plate fitted in 18" size square range, extra 9.38 Gas Hot Plate separate from 18" size square range, extra 10.13 Electric Hot Plate fitted in 18" size square range, extra 11.63 Electric Hot Plate separate from 18" size square range, extra 12.38 Galvanized reservoir ordered separate from range, extra 10.50 Copper reservoir ordered separate from range, extra 13.88 High Shelf ordered separate from range, extra 10.88 High Closet ordered separate from range, extra 16.50 If wanted without balustrade, deduct 1.88 If wanted with plain instead of enameled oven door panels, deduct 1.13 If wanted with plain instead of white enameled oven door panels and plain splasher on high shelf or high closet, deduct 3.00										

Oil National



Oil National with High Shelf

Cast Iron Enameled Range

For Oil, Oil and Gas or Oil and Electric

An entirely new idea in range construction. In addition to using kerosene as a fuel for the oven and cooking top, it can be equipped with a three burner electric hot plate or a two burner gas hot plate. These plates can be used in place of right end shelf. The use of electric or gas hot plate makes this range ideal for any season of the year.

Equipped with two 6½-inch celebrated double Lynn burners and will burn number one fuel oil commercial standard grade, or kerosene. Do not use a fuel with a flash point less than 100 degrees Fahrenheit. The use of low grade oil is false economy. Each burner has a capacity of about 350 degrees. Burner rest is installed and levelled at factory. Burners have separate metering valves and can be operated independently. Clear view of burner operation results from mica openings above each burner.

The Oil National has a special long fire travel flue system, and will heat six covers with dampers open or closed. Average consumption of oil for each burner is about one pint per hour. It is not necessary to use two burners at all times, since one burner will generate enough heat for many cooking operations.

The double Lynn range burner operates on a vaporizing principle. The oil is maintained on a constant level in vaporizing chambers and annular cast iron grooves, which form the base of burner inside the range. Around these grooves are special heat resisting perforated sleeves. When the fire has been started so as to heat the burner, the oil in the vaporizing chamber boils and the vapor therefrom flows to the grooves, where it is picked up by the air draft, mixes and becomes a combustible mixture, which burns in between and above the sleeves with a purple flame. It is important that you read instructions very carefully before operating range. A set of full instructions furnished with each range.

Reservoir heats by contact and made of heavy copper tinned inside. Does not interfere with baking.

When ordering range with gas hot plate, state kind of gas to be used, whether natural, manufactured or bottled gas.

Choice of Colors: White and Black, Stippled Suntan or Stippled Soft Green Enamel. Specify color desired.

Specifications and Prices

No.	Style	Holes	Top Surface	Oven	Weight	Price
8618	With End Shelf	Six 8-in.	25½x37	18x18x11½	400 lbs.	\$112.50
8618	With Electric Hot Plate	Six 8-in.	25½x45	18x18x11½	420 lbs.	124.50
8618	With Gas Hot Plate	Six 8-in.	25½x41¼	18x18x11½	425 lbs.	121.87
8618	With Reservoir	Six 8-in.	25½x39	18x18x11½	480 lbs.	127.50



With Three Burner Electric Hot Plate



With Two Burner Gas Hot Plate

PERFECT IN EVERY DETAIL

Oil National

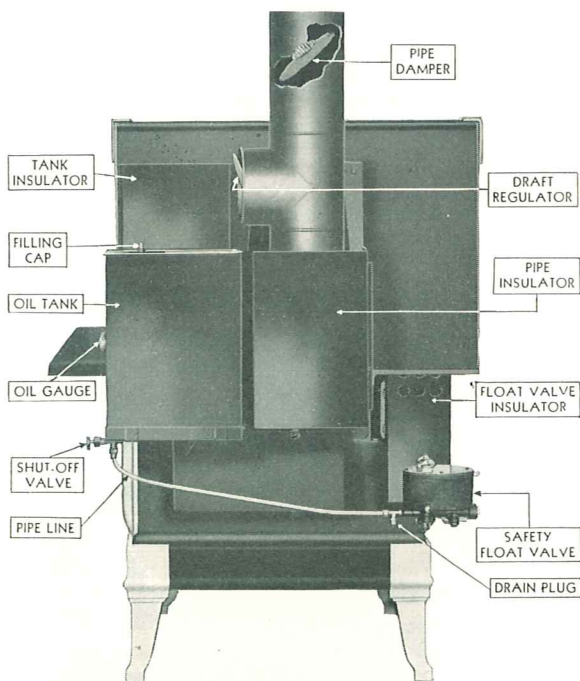
Cast Iron Enameled Range
For Oil, Oil and Gas or Oil and Electric
With Swing Oven Door



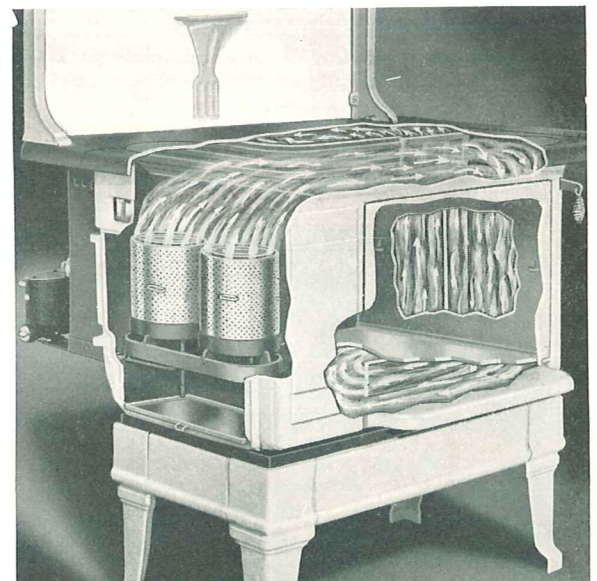
An outstanding range of unsurpassed quality, which adds to the attractiveness of its surroundings. The thoroughness of its construction assures extra long life. Its special design and extremely high quality will increase the effectiveness of your stove display.



Oil National with Reservoir and High Shelf

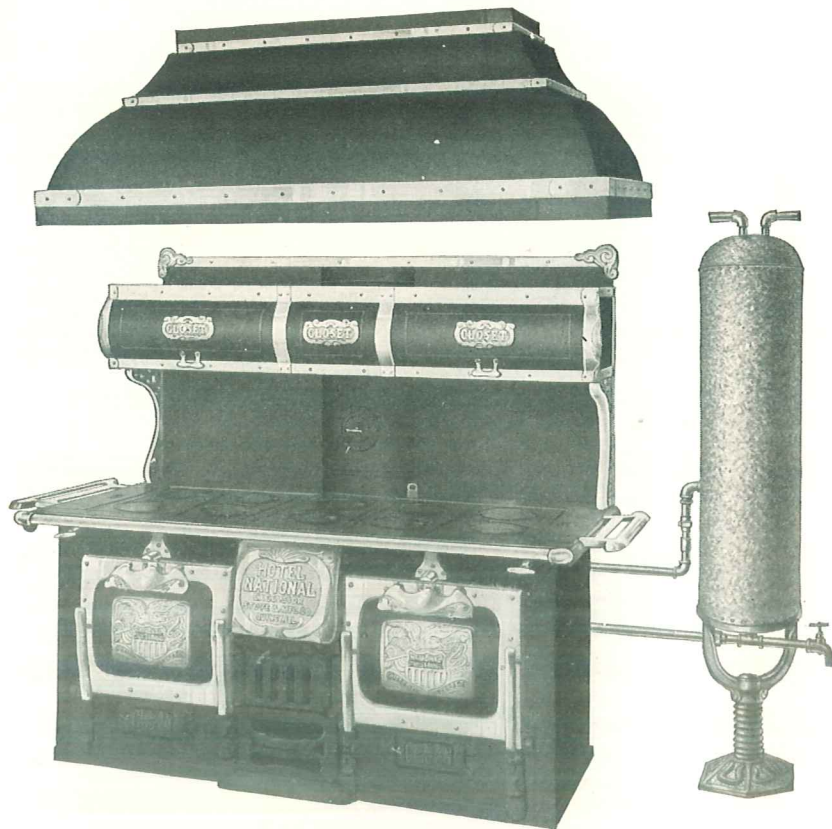


Showing Rear Construction



Interior View Showing Long Fire Travel
Heats All Parts Evenly and at the Same Time

NOTHING BETTER MADE



Hotel National with High Closet, Canopy and Pressure Boiler

Hotel National

Double Oven Armco Ingot Iron Range

This range has two ovens and single fire. It is provided with a direct-draft damper and slide damper over flues of each oven. These dampers may be operated at will, closing off one oven at any time. This leaves one oven in operation and the other serving as a warming closet. Both ovens may be operated at same time. Fire box is provided with duplex grate for coal (reversing the grate adapts it for wood). It has extra heavy, substantial cast iron linings and large pouch feed door.

Water heater consists of a U-shaped section of fire box, which is the only form of construction that equalizes heat in both ovens, and will heat more water than any other. This range is built in a first-class manner. Body is heavy Armco Ingot Iron plate, with extra Armco Ingot iron plate and asbestos lining, making three distinct walls. Ovens are ribbed and braced on bottom with angle irons. Top oven plate is covered with cast iron fret-work. It has a double main bottom. Body is black japanned, oven doors are double lined, with dead air space (like a refrigerator door), preventing escape of heat, making a corresponding saving in fuel.

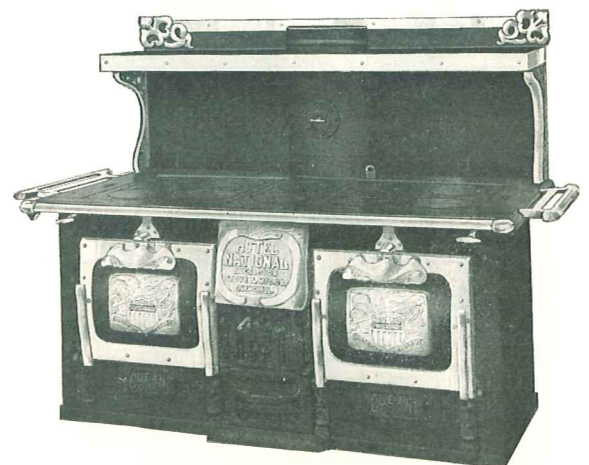
We have spared no expense to make this range first-class in every respect, so as to withstand hard usage. While this construction will not permit us to compete with cheap ranges offered to the trade, our prices are as low as consistent with high class construction.

These ranges can be furnished with ten 8-inch or ten 9-inch cooking holes in key plate tops with loose short centers. Can also be furnished with French plate top, consisting of three solid plate sections without covers, excepting center section, provided with one 13-inch hole and reducing ring to 9-inch. Can also be equipped with solid key plates over ovens. No. 20FT Hotel National may be furnished when specified with grease groove on key plate. Specify if wanted.

Triple-Plated Nickel Trimmings: Oven doors, oven door panels and handles, oven door stops, fire door, front towel bar, end towel rails, shaker and all edges, brackets and jambs on high shelf and closet.

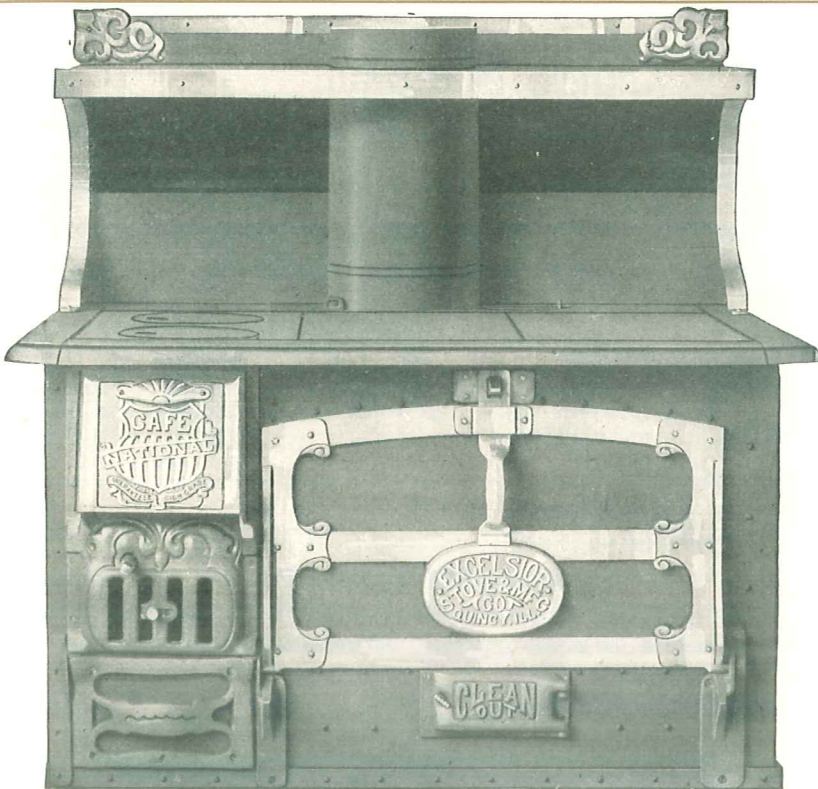
Specifications and Prices

No.	Holes	Ovens Each	Top Surface	Weight	Price Less High Closet or Shelf
820	Ten 8-inch	20x24x16	34x67	960 lbs.	\$221.63
920	Ten 9-inch	20x24x16	34x67	970 lbs.	223.88
20FT	French Top	20x24x16	34x67	960 lbs.	221.63
High Shelf and First Joint Pipe, extra.....				85 lbs.	16.50
High Closet and First Joint Pipe, extra.....				120 lbs.	33.00
Cast U Water Heater fitted in range, extra.....					14.25
Cast U Water Heater separate from range, extra.....				65 lbs.	17.25
30 Gallon Galvanized Pressure Boiler, extra.....				85 lbs.	12.00
Stand for above, extra.....					1.50
52 Gallon Galvanized Pressure Boiler, extra.....				145 lbs.	24.00
Stand for above, extra.....					3.00
Pipe Connections U to Boiler, extra.....				35 lbs.	22.05
Nickel Trimmed Canopy over range, extra.....				160 lbs.	32.63
Polished Top, extra.....					9.75
Legs 4-inches high, extra.....					2.25



With High Shelf

GIVE LIFETIME SERVICE



Cafe National with High Shelf

Cafe National

Black Armco Ingot Iron Range
For Hard Coal, Soft Coal or Wood

Especially adapted for hotel, restaurant and camp purposes. Constructed in all its features extra heavy and substantial. Top of oven is concave and covered with asbestos, also reinforced with cast iron fretwork, which will hold ashes in all the meshes, and serve as a further protection to oven. Fireback and front lining are sectional and interchangeable. Grate is the National duplex for coal, reversed it forms a perfect wood grate, and may be removed through front of range without disturbing water connections. On account of drop pouch door being used for fueling, we assemble range with but one end lining. Combination pipe damper and check draft located in range top consists of a slide plate that automatically closes pipe opening partially, and admits a supply of air through fretwork openings, to carry off the gases and check the fire. A plunger damper, for direct draft, enables a quick fire at all times. Oven bottom is made with two-rib joints, and bar-iron braces to prevent warping. Body is thoroughly lined with asbestos and Armco iron plate lining, making a three wall system. It is also provided with a false bottom and ventilated space between main and false bottom, which thoroughly prevents heating floor under the range. Drop pouch door is $7\frac{1}{2} \times 9\frac{1}{4}$ inches and permits use of large size coal or wood. It will accommodate wood 26 inches long. Oven door horizontal bars are wrought iron and non-breakable.

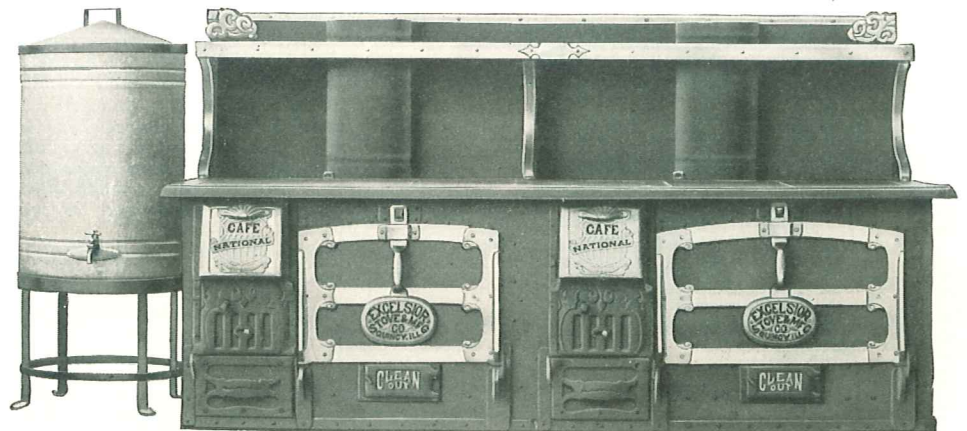
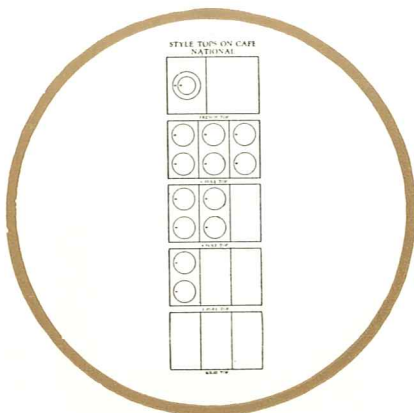
Arranged for cast water front, using one-inch pipe. Body finish is black. Trimmings, ground polish. These ranges can be set (tandem) two or more coupled in a continuous line.

For this purpose, we provide a coupler top. Regular high shelves used on single oven ranges may be used when two or more are set tandem. These ranges may also be set in the center of kitchen (Center Range), setting as many as desired back to back.

We do not furnish couplings for lead pipe connections from water front to tank. Galvanized iron pipe must be used for this purpose. We furnish these ranges with key plate top consisting of two 9-inch holes, four 9-inch holes, six 9-inch holes, or entire top solid in three sections, also French Top consisting of one 13-inch hole with 9-inch cover and solid rear key plate. When ordering be sure to specify top desired. Unless otherwise specified, we ship all ranges two 9-inch holes in front section, and balance of top with two solid plates. When so specified, we can furnish key plates equipped with grease groove and drain.

Specifications and Prices

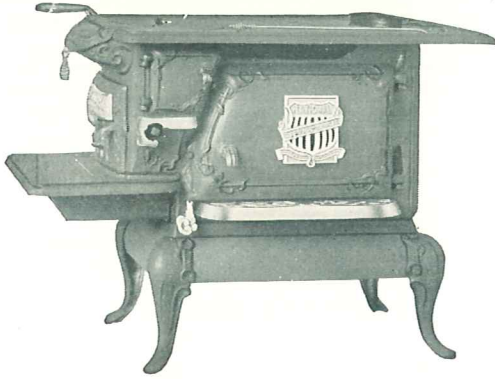
No.	Size Ovens	Size Pouch Door	Top Surface	Weight	Price with High Shelf
924	24x24x16 $\frac{1}{2}$	7 $\frac{1}{2}$ x9 $\frac{1}{4}$	34x47	760 lbs.	\$145.50
930	30x24x16 $\frac{1}{2}$	7 $\frac{1}{2}$ x9 $\frac{1}{4}$	34x53	845 lbs.	160.50
Wood Grate to make shallow fire box, extra				20 lbs.	4.13
Cast Water Front fitted in range, extra					9.75
Cast Water Front separate from range, extra				45 lbs.	15.75
50 Gallon Tank with stand and faucet, extra				130 lbs.	23.25
75 Gallon Tank with stand and faucet, extra				150 lbs.	26.62
Pipe Connections range to above tank, extra				15 lbs.	4.88
30 Gallon Galvanized Pressure Boiler, extra				70 lbs.	12.00
Stand for above, extra				6 lbs.	1.50
52 Gallon Galvanized Pressure Boiler, extra				100 lbs.	24.00
Stand for above, extra				15 lbs.	3.00
Canopy for No. 924, extra				60 lbs.	25.50
Canopy for No. 930, extra				65 lbs.	15.75
If wanted without first joint of pipe and high shelf, deduct				60 lbs.	27.75
Polished top, extra					8.63
Breeching to connect smoke pipe of double range to single flue, extra					20.63
Legs 4-inches high, extra					2.25



Showing No. 924 and 930 Cafe National set tandem with 75 gallon tank attached

THOROUGHLY MADE AND DEPENDABLE IN EVERY WAY

Guide National



Cast Cook

For Hard Coal, Soft Coal or Wood

A medium priced cast cook stove of plain design. Parts subject to wear are built heavy and substantial. Provided with Porcupine Fireback, duplex grates for coal or wood, ribbed covers and centers. Mounted without rods. Two flue system provides easy draft and insures perfect baking qualities. Has wire oven rack, cast skirtings, simmering cover, and large sheet steel ash pan. Triple plated nickel trimmings. Arranged for two pipe water back coil.

Furnished as desired with or without galvanized or copper reservoir, which heats by contact. It may be permanently bolted to stove.

Specifications and Prices

No.	Holes	Oven	Top Surface With Shelf	Weight	Price Square
818	Four 8-inch	18x18x11 $\frac{1}{2}$	24x34	258 lbs.	\$45.38
820	Four 8-inch	20x20x12	26x36	291 lbs.	49.88
920	Four 9-inch	20x20x12	26x36	294 lbs.	51.00
Two Pipe Water Back Coil, extra.....					2.62
Copper reservoir fitted to stove, extra.....					13.13
Copper reservoir ordered separate from stove, extra.....					13.88
Galvanized reservoir fitted to stove, extra.....					9.75
Galvanized reservoir ordered separate from stove, extra.....					10.50

Master National

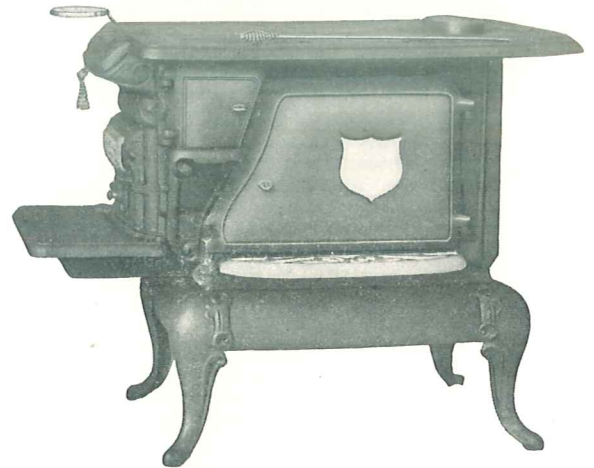
Cast Cook

For Hard Coal, Soft Coal or Wood

A stove made from Pure Pig Iron of exceptional value. It is modeled plain in design, provided with reinforced convex oven top, oval fire box, duplex grate for coal or wood and porcupine fire back. Ribbed covers and centers, with cut long center. Top is cut in two sections. Substantial center rest. Mounted with bolts. Two flue system. Rolling damper, wire oven rack, swing hearth slide, cast iron legs, skirtings, sheet steel ash pan and aluminized oven doors.

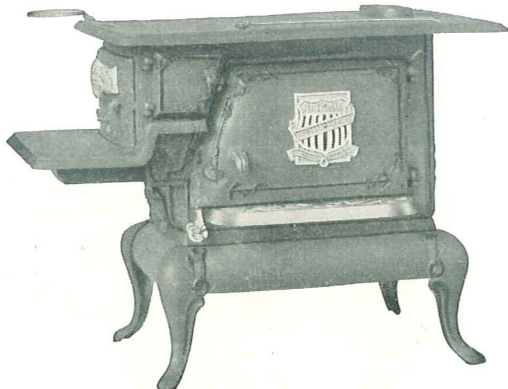
"N" Series, illustrated, has nickeled oven door panels, front door panel, towel rod, swing tea pot shelf and wire handles, while on "P" Series oven door panel and front door panel are plain.

Furnished as desired with or without galvanized or copper reservoir, which heats by contact. It may be permanently bolted to stove.



Specifications and Prices

No.	Holes	Oven	Top Surface With Shelf	Weight	Price Square
816P	Four 8-inch	16x16x10 $\frac{1}{4}$	22 x30	205 lbs.	\$33.75
818P	Four 8-inch	18x18x11 $\frac{1}{4}$	22 $\frac{1}{2}$ x32	242 lbs.	36.37
820P	Four 8-inch	20x20x11 $\frac{3}{4}$	24 x34	260 lbs.	39.38
816N	Four 8-inch	16x16x10 $\frac{1}{4}$	22 x30	205 lbs.	34.88
818N	Four 8-inch	18x18x11 $\frac{1}{4}$	22 $\frac{1}{2}$ x32	242 lbs.	37.50
820N	Four 8-inch	20x20x11 $\frac{3}{4}$	24 x34	260 lbs.	40.50
Two pipe water back coil, extra.....					2.62
Copper reservoir fitted to stove, extra.....					13.13
Copper reservoir separate from stove, extra.....					13.88
Galvanized reservoir fitted to stove, extra.....					9.75
Galvanized reservoir separate from stove, extra.....					10.50



Cast Cook

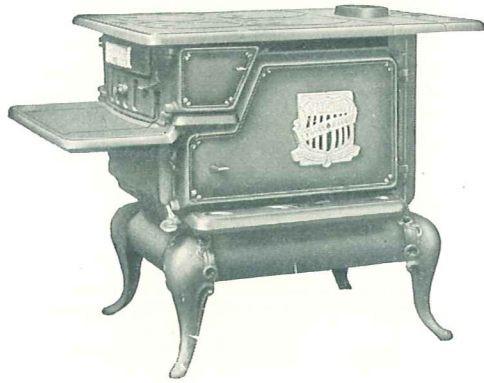
For Wood Only

A first class cast wood cook stove of plain design. Made from pure pig iron. Alum-nine lined oven doors. Extra false wood bottom in fire box. Porcupine fireback. Heavy ribbed covers and centers with cut long center. Top is cut in two sections. Strong center rest. Mounted with bolts. Two flue system, insuring easy draft. Has removable rolling damper, wire oven rack, deep hearth, cast iron legs, cast skirtings, large sheet steel ash pan and simmering cover. Four eight inch cooking holes. Oven door panel, front door panel, outside oven shelf, swing tea pot shelf, towel rod and cover lifter are triple plated nickeled.

Copper or galvanized reservoir may be furnished if desired on all sizes, except No. 817.

Specifications and Prices

No.	Holes	Ovens	Top Surface With Shelf	Weight	Price Square
817	Four 8-inch	17x16x10 $\frac{1}{2}$	22x32	201 lbs.	\$37.50
819	Four 8-inch	19x18x11 $\frac{1}{2}$	24x34	235 lbs.	42.00
821	Four 8-inch	21x20x12	26x36	263 lbs.	46.50
Two Pipe Water Back Coil fitted, extra.....					2.62
Copper Reservoir fitted to stove, extra.....					13.13
Copper Reservoir ordered separate from stove, extra.....					13.88
Galvanized Reservoir fitted to stove, extra.....					9.75
Galvanized Reservoir ordered separate from stove, extra.....					10.50



Cast Cook

Savoy National

For Wood Only

A cook stove of exceptional value. Made of selected pig iron. Has large fire box. Porcupine Fire Back. Has swing fender, cut long center, swing hearth slide, deep hearth, rolling damper, outside oven shelf, oven door kicker and back top shelf. Nickered oven door panels. Mounted without rods. A perfect baker and fuel saver.

Reservoir where furnished is made of galvanized iron. Heats water by contact and may be permanently bolted to stove. Capacity 8 gallons.

Specifications and Prices

Number	Holes	Oven	Top Surface With Shelf	Weight	Price Square
816	Four 8-inch	16x16x10	21x28	162 lbs.	\$28.50
818	Four 8-inch	18x18x10½	23x30	200 lbs.	32.25
918	Four 9-inch	18x18x10½	23x30	203 lbs.	33.37
820	Four 8-inch	20x20x12	25x32	230 lbs.	36.00
920	Four 9-inch	20x20x12	25x32	233 lbs.	37.13

Flat Coal Grate to fit No. 816, extra.....	.75
Flat Coal Grate to fit No. 818-918, extra.....	.83
Flat Coal Grate to fit No. 820-920, extra.....	.90
If wanted with reservoir, all sizes except 816, extra.....	9.75
Galvanized reservoir ordered separate from stove, extra.....	10.50

Cast Cook

Signal National

For Wood Only

Made from Pure Pig Iron with large fire box. Porcupine fire back. Swing fender, cut long center, swing hearth slide, deep hearth, rolling damper and back top shelf. Mounted with bolts.

Reservoir where furnished is made of galvanized iron. Heats water by contact. Capacity 8 gallons.

Specifications and Prices

Number	Holes	Oven	Top Surface Less Shelf	Weight	Price Square
714	Four 7-inch	14x15x 9¾	19x22	138 lbs.	\$22.50
816	Four 8-inch	16x16x10	21x24	156 lbs.	26.25
818	Four 8-inch	18x18x10½	23x26	194 lbs.	30.00
918	Four 9-inch	18x18x10½	23x26	197 lbs.	31.13
820	Four 8-inch	20x20x12	25x28	223 lbs.	33.75
920	Four 9-inch	20x20x12	25x28	226 lbs.	34.87

Flat Coal Grate to fit No. 714, extra.....	.67
Flat Coal Grate to fit No. 816, extra.....	.75
Flat Coal Grate to fit Nos. 818-918, extra.....	.83
Flat Coal Grate to fit Nos. 820-920, extra.....	.90
If wanted with Galvanized Reservoir, all sizes except 714-816, extra.....	9.75
Galvanized Reservoir ordered separate from stove, extra.....	10.50



Cast Cook

Dandy National

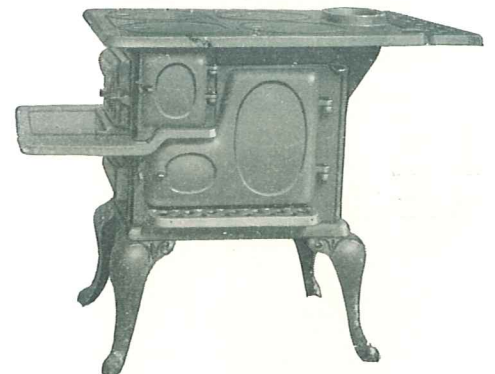
For Wood Only

Large Fire Box. Porcupine fire back. Swing fender, cut long center, swing hearth slide, deep hearth, rolling damper, outside oven shelf, back top shelf. Mounted without rods.

Specifications and Prices

Number	Holes	Oven	Top Surface	Weight	Price
815	Four 8-inch	14x15x9¾	20x22	145 lbs.	\$23.25

If wanted with Flat Coal Grate, extra..... .67



Cast Cook

Comet National

For Wood Only

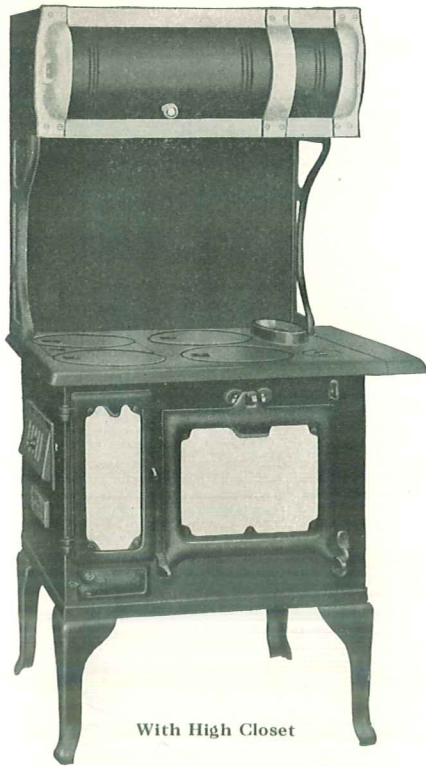
Carefully made of selected material with large fire box, single fireback, solid fender, loose short center, swing hearth slide, rolling damper. back top shelf and outside oven shelf. Mounted without rods.

Specifications and Prices

Number	Holes	Oven	Top Surface Less Shelf	Weight	Price
714	Four 7-inch	14x14x9¾	19½x22	114 lbs.	\$16.12

If wanted with flat coal grate, extra..... .53

If wanted without back shelf and outside oven shelf, deduct..... .60



With High Closet

Number
812—For Coal or Wood
128—For Wood Only

Ray National

Steel Cook For Coal or Wood



Square

The body is made of blue steel. Oven bottom has a special rib joint to prevent warping. Top is made of cast iron with one loose short center. Heavy cast linings in fire box with self-locking, shaking and dump grate. Rolling damper, easy to operate. Cast legs, drop oven door, flue clean-out under ash door. White enameled panel in oven and ash doors. High shelf has japanned brackets and nickeled front strip. High closet has japanned brackets, nickeled closet ends, strips and knobs.



With High Shelf

Specifications and Prices

Holes	Oven	Top Surface	Weight	Price Square	Price With HS	Price With HC
Four 8-inch	12x17x10	20x27	110 lbs.	\$20.25	\$25.50	\$28.50
Four 8-inch	12x17x10	20x27	105 lbs.	19.87	25.13	28.12



With High Closet

Number
812—For Coal or Wood
128—For Wood Only

Rancher National

Steel Cook For Coal or Wood



Square

The body is made of blue steel. Oven bottom has a special rib joint to prevent warping. Top is made of cast iron with one loose short center. Heavy cast linings in fire box with self-locking, shaking and dump grate. Steel legs, drop oven door, flue clean-out under ash door. Blue steel panel in oven and ash doors. High shelf has japanned brackets and nickeled front strip. High Closet has japanned brackets, nickeled closet ends, strips and knobs.



With High Shelf

Specifications and Prices

Holes	Oven	Top Surface	Weight	Price Square	Price With HS	Price With HC
Four 8-inch	12x17x10	20x27	106 lbs.	\$18.37	\$23.62	\$26.62
Four 8-inch	12x17x10	20x27	101 lbs.	18.00	23.25	26.25

National Gas Heaters

Porcelain Enamelled Walnut Finish

For Manufactured or Natural Gas



No. 6-3-W National Gas Heat Circulator

The maximum and minimum gas consumption in cubic feet per hour does not mean anything. This is governed by the size orifice used and gas pressure. The important feature on a gas circulator is how many B. T. U.'s will the heater deliver from the smallest amount of gas used as fuel. The NATIONAL gas circulator will meet this requirement and is a most powerful economical heat producer.

DESCRIPTION

Combustion Chamber is equipped with four, six or nine three-inch extra heavy Cop-R-Loy tubes, extending vertically through combustion chamber and connected at top and bottom with gas tight cast-iron plates. Extra heavy Cop-R-Loy side walls form the body of the combustion chamber. The Cop-R-Loy baffle plates are so attached to inside walls of combustion chamber to force the heat against all parts of the vertical tubes through which purified air passes into the room.

Air Circulation: The cold air is drawn from the floor, passing over and against the cast-iron burner box, then through the large Cop-R-Loy tubes, around which the heat is passed back and forth by a series of baffle plates. All gas fumes pass into the combustion chamber and circulate over and around the tubes and enter the down flues on the right and left side of combustion chamber, at the extreme top back, thence travel downward within a few inches of the bottom of heater and return upward through center back flue to the four-inch pipe outlet. This not only triples the circulation and efficiency of the heater, but also holds the flue losses down to a minimum.

Casing is made in four sections of extra heavy, vitreous enameling steel, beautifully grained in walnut finish, will harmonize with room furnishings. Designed with oval corners, which permit a free, unobstructed flow of air and are most sanitary and easily kept clean.

Burners are large, properly constructed one-piece cast burners, cored and drilled. Manifold is concealed and more sanitary than the exposed style. Gas cocks are equipped with special needle point adjuster, permitting the operator to adjust burners to all gas pressures.

Illustration in lower right hand corner shows the exact inner construction of the NATIONAL gas circulator. The long arrows indicate the air drawn from the floor that passes between the inner units and casing through top, also the air drawn from floor over the burner box top into the tubes and discharged through fretwork top.

The short arrows indicate the gas heat passing out of burner box top around the inner tubes, where it is conducted back and forth through a series of baffle plates, entering the down flues at top and traveling downward within a few inches of bottom and thence up to pipe outlet.

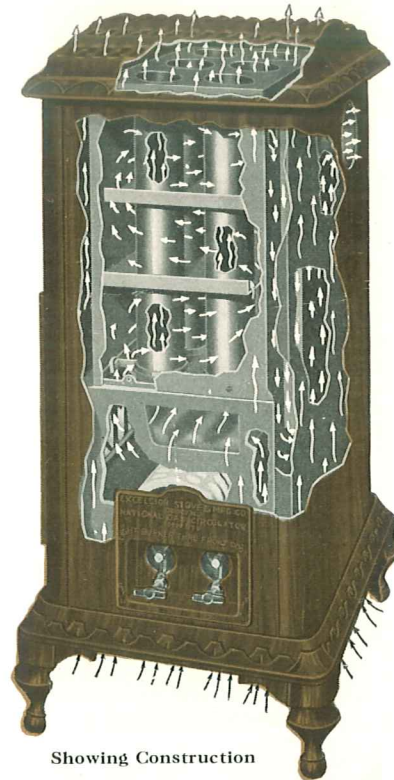
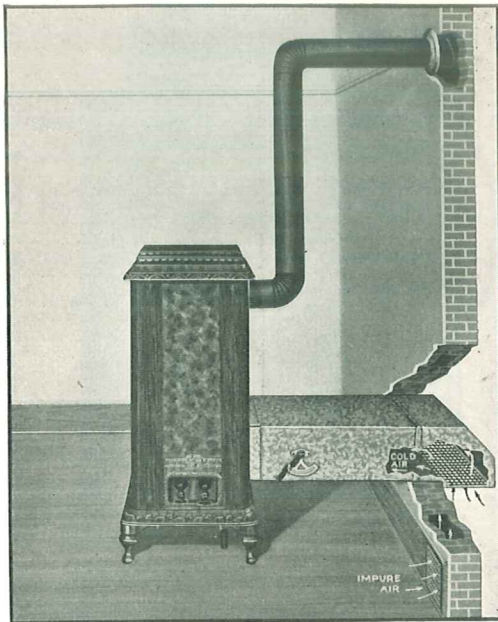
Illustration in center shows No. 9-3-W made up as a special unit to meet requirements and recommendations of school authorities. Designed to properly heat and ventilate schoolrooms and to comply with State Laws.

When placed in schoolrooms heater is supplied with extra equipment listed below, consisting of fresh air duct and elbow, damper with quadrant to regulate volume of fresh air.

- 8x20 Fresh Air Collar
- 3 Jts. 4" Blue Pipe
- 2 only 4" Blue Elbows
- 1 only 4" Collar
- 1 only 4" Mitre Joint
- 1 only 9x12 B. J. Register

Fresh Air Duct, Screen and Elbow

Fresh air duct and impure air register shown are used only when placed in buildings where the law requires outside air to be taken through heater and ventilation such as in schoolrooms.



Showing Construction

Specifications and Prices

Number	Tubes	Burners	Length Air Tubes	Height	Width	Depth	B.T.U. Per Hour	Weight	Price
4-3-W	4	1	16	36	19 1/4	16 3/4	30000	180 lbs.	\$45.37
6-3-W	6	2	18	42 1/2	24 1/2	19	40000	231 lbs.	58.12
9-3-W	9	2	20	45	30	19	80000	280 lbs.	74.63

Extra Equipment for 9-3-W Gas Heater

8x20 Fresh Air Collar	3.37
3 Jts. 4" Blue Pipe, per joint	.16
2 only 4" Blue Elbows, each	.15
4" Collar, each	.06
4" Mitre Joint, each	.16
9x12 B. J. Register, each	1.89
Fresh Air Duct, Screen and Elbow, each	9.75

FOR SCHOOLROOMS, LARGE STORE ROOMS AND WAREHOUSES

DeLuxe Fireplace National

Golden Oak Walnut

For Hard Coal, Soft Coal, Coke or Wood

DESCRIPTION

A strictly first quality vitreous porcelain enameled heater, finished in a combination of golden oak and walnut, grained by hand. Artistic in appearance, beautiful and durable. Made entirely of best quality material, of exceptionally sturdy construction, providing a continuous circulation and renewal of air.

Fire Pot: Oblong type, exceptionally deep and heavy, reinforced with bars on inside and corrugated on outside to allow for expansion and contraction. Self-sealing asbestos cement joints. Fire pot is held in place by four bolts, adding to durability of construction. Heavy front expansion bar prolongs life of fire pot.

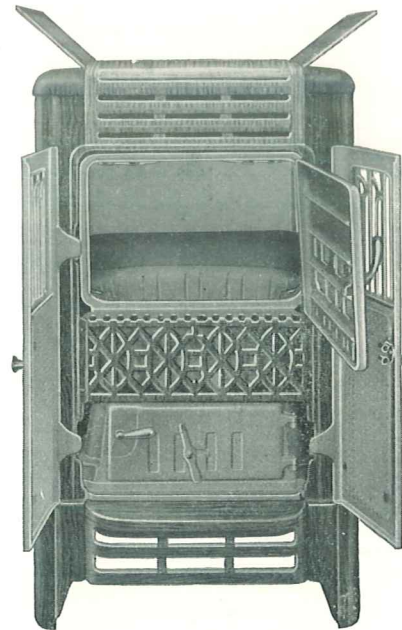
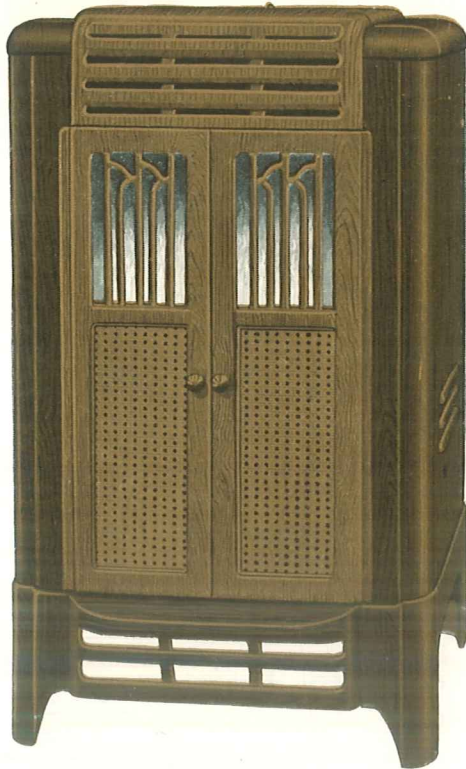
Body: Inside body made of analyzed gray iron with extra heavy reinforcing ribs, which increase the life of the casting and add heating efficiency. Dome is cast in three sections which permits proper expansion and contraction of iron and eliminates cracking.

Casing: Consists of three sections of porcelain enameled steel panels. Sides have rounded front corners. Exceptionally large space is provided between casing and inner unit to allow free unobstructed flow of air. Casing front is all cast iron, made in sections, with two outside open work doors enameled inside and out, fitted with elaborately designed steel panels. Back panel finished in black porcelain, while front and sides are beautifully grained in golden oak and walnut finish—truly a work of art.

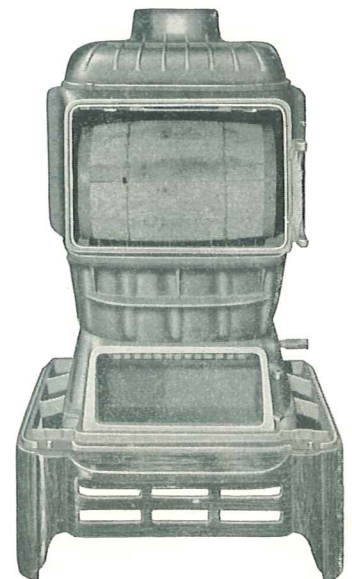
Evaporating Pan: A one piece porcelain enameled water pan (clean as a china dish) is furnished. It is demountable for cleaning and conveniently placed for filling. Sufficient heat permits the evaporation of large quantities of water, thereby keeping air in the rooms in a pure and healthful state at all times.

Doors: The feed door is made with invisible hinges and has opening measuring 12x18 1/4 inches, or large enough to entertain a nail keg. Perforated tin is placed in the door to protect mica. Door is ground and fitted to a paper tight test joint and held in position with turnkey. Ash door and ash pit base are surface ground to a paper test joint and will remain absolutely tight.

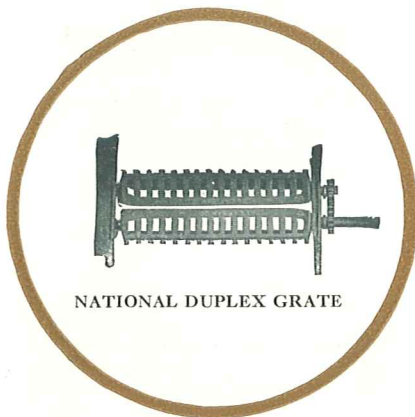
Grates: Equipped with National Duplex Grate, made without grate frame. A bar on each end serves all requirements. Grates can be mounted through ash pit opening. Coal grate reversed forms perfect wood grate.



Open View showing how top can be used for cooking



Interior View



NATIONAL DUPLEX GRATE

Specifications and Prices

No.	Size Fire Pot	Size Casing	Height Overall	Size Feed Door	Height Floor to Pipe Collar	Weight	Price
221	20 1/2 x 14 1/2	24 1/2 x 28 1/2	49	12 x 18 1/4	46 1/2	475 lbs.	\$90.75

ADVANCED DESIGN, EXTRA CAPACITY WITHOUT ADDED FUEL USE



Elite National

Walnut Enamel Finish

For Hard Coal, Soft Coal or Wood

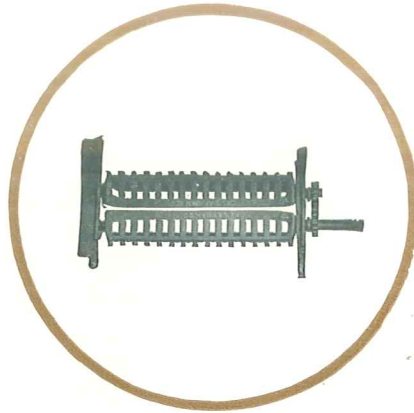
DESCRIPTION

A circulating heater, which in construction cannot be surpassed, since it includes all features found in higher priced heat circulators.

Inner unit is of cast iron construction, with deep ash pit, heavy fire pot and large feed door. Combustion chamber is especially designed to extract all heat from fuel and prevent its entering flue.

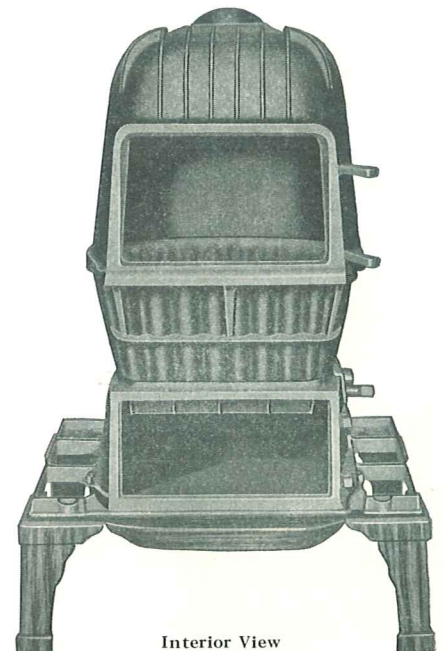
Fire pot is provided with special expansion rib in front to prevent cracking. Grates on all sizes are of the National Duplex Type.

Casing sides are made of steel. Back casing panel is black porcelain enamel. Casing sides and front are beautifully enameled in a two tone effect and design is such as to eliminate dust and foreign matter accumulating on surface. Casing front is all cast iron, properly ventilated to prolong life of fire pot. Space between inner unit and casing has been carefully proportioned to permit greatest amount of air to circulate through space to be heated.



NATIONAL DUPLEX GRATE

Made without a grate frame. Has bar on each end to meet all requirements and insure perfection. By reversing sides either coal or wood can be used as fuel. The solid side makes a perfect wood burning grate and when in closed position reduces depth of fire box, so essential when burning wood. Lateral bars, the full length grate, prevent coal or clinkers from interfering with the ease in dumping grate while fire is burning.



Interior View

Ash door and base are surface ground to a paper tight fit. All joints are properly fitted and sealed with indestructible asbestos cement.

Water pan is enameled inside and out. It is conveniently placed and indestructible.

Made in three sizes, either of which may be supplied with cast iron magazine when hard coal is used as fuel. No National has ever failed to give complete satisfaction.

Specifications and Prices

No	Size Fire Pot	Size Feed Door	Size Ash Door	Height Overall	Width Overall	Depth Overall	Weight	Price
160	11 x16x8	11 $\frac{1}{2}$ x7 $\frac{1}{4}$	11 $\frac{1}{2}$ x5	40	24	16 $\frac{1}{2}$	265 lbs.	\$54.37
180	12 x18x9	12 $\frac{1}{2}$ x8 $\frac{1}{2}$	13 $\frac{1}{2}$ x5 $\frac{3}{4}$	44	26	17 $\frac{1}{2}$	345 lbs.	61.87
200	13 $\frac{1}{4}$ x20x11	14 $\frac{3}{4}$ x8 $\frac{3}{4}$	15 $\frac{1}{4}$ x6 $\frac{1}{4}$	48	28	19 $\frac{1}{2}$	375 lbs.	72.00
Hard Coal Magazine, Extra.								\$2 25

DISTINCTIVE IN APPEARANCE



Alma National

Enameled Circulating Heater

For Hard Coal, Soft Coal, Coke or Wood

A strictly first quality, beautiful, modern, efficient vitreous porcelain enameled circulator, in cross-burl walnut finish, unexcelled in modern stovecraft. Heating unit is made entirely of best quality cast iron. Body is in sections of square ribbed design, assembled with bolts on outside to insure long life and maximum capacity. Corrugated extra heavy fire pot has almost perpendicular sides, which prevent fire from resting on inner walls and allow an unobstructed flow of heat, increasing efficiency and prolonging life of heater. Hot blast draft, entering in part through slide in ash door passes up through grate while a portion thereof is drawn through a tube from base into sectional blast ring at top of fire pot and expelled over fire, producing a perfect hot blast and perfect fuel combustion. Casing consists of three sections of steel panels above cast louver sections at sides and back. Main front is cast iron, properly ventilated to prolong life of fire pot. One piece porcelain lined water pan in rear of heater. An ideal heater for any home, designed to harmonize in its surroundings with all that conservative taste approves.

Specifications and Prices

Number	Dia. Top Fire Pot	Floor Space Required	Height Overall	Size Feed Door	Weight	Price
19W	19	27½x27½	50½	9½x11	540 lbs.	\$111.00
If wanted with Hard Coal Magazine, extra.....						3.00
Hard Coal Magazine ordered separate from heater, extra.....						3.75

Woodburn National

Enameled Circulating Heater

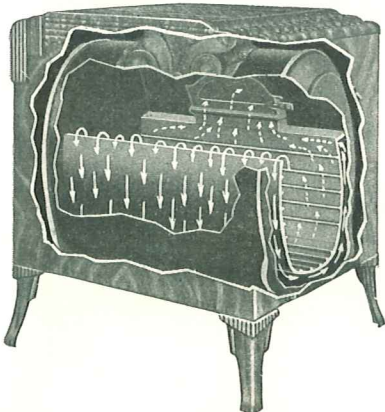
For Wood Only

Cast Lined

Golden Oak Walnut Finish

DESCRIPTION

The only REVERTIBLE wood burning circulator on the market. So constructed that the fuel may be burnt on a direct or indirect system by a single operation of damper. When the feed door is opened for refueling, damper automatically opens. When damper is closed, heat and smoke must circulate around entire body of the heater, thus obtaining greatest efficiency from fuel consumed. The flue space between cast linings and heavy steel body is of sufficient size to entertain all heat and smoke produced in the fire box. The increased radiation and saving of fuel accomplished by this system is a great factor in economy. The cheerful glow of an open fireplace is ever present by reason of the mica front. Fitted with cast removable linings, smoke curtain and spark arrester. Feed door opening measures 9½x16. Top grating can be removed to heat water.



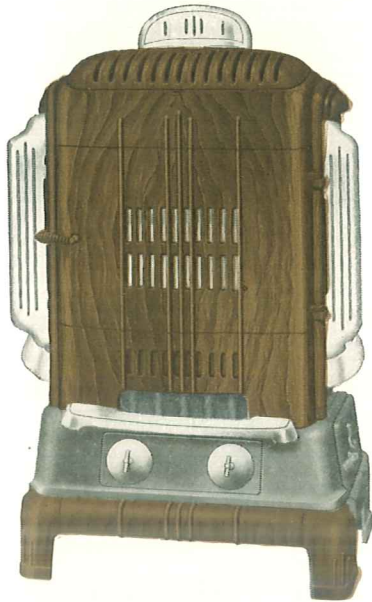
Interior View

Specifications and Prices

No.	Floor Space	Height Overall	Length Wood	Weight	Price
29	24½x30	34	28¼	250 lbs.	\$57.75

BETTER THAN THE BEST

Duplex National



No. 24WN

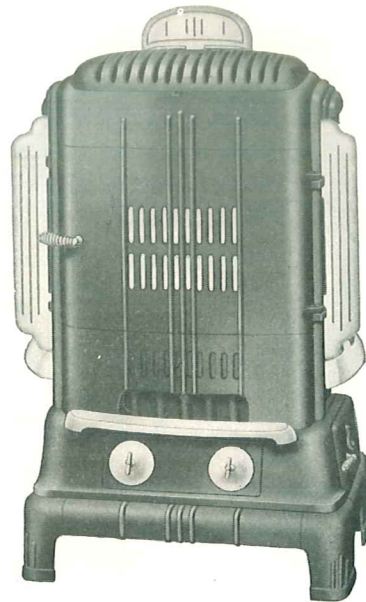
Nickel Trimmings consist of urn, pilasters, foot rails, screw drafts and keys.

Walnut Trimmings consist of swing top, upper front, lower front, feed door, two front legs and front base strip, while ash pit base, ash door, two back legs, two short base strips and one long base strip are black japan.

Double Hot Blast

For Coal or Wood

The Duplex National is an entirely new design, modern in every respect and with more outstanding features than any heater of this type. The fire pot is constructed along scientific lines, to stand the severe strains of expansions and contraction, and is an ideal hot blast and smoke consumer. The hot blast tube supplies fresh air to the top of fire pot, and in conjunction with the special constructed fire pot, makes a double hot blast that burns coal with the greatest efficiency. The deep ash pit is fitted with duplex grates that can be reversed to burn wood if desired. Screw draft in side of base will permit the operator to regulate the fire more easily. Top is large and fitted with two covers. The foot warming feature will be appreciated by users of Duplex National. The heavy steel body is attached to fire pot with our safety lock construction, and is gas, dust and ash proof. Duplex National is a practical as well as an economical heater to use.



No. 24NR

Nickel Trimmings consist of top ornament, pilasters, foot rails and screw drafts.

Distinction

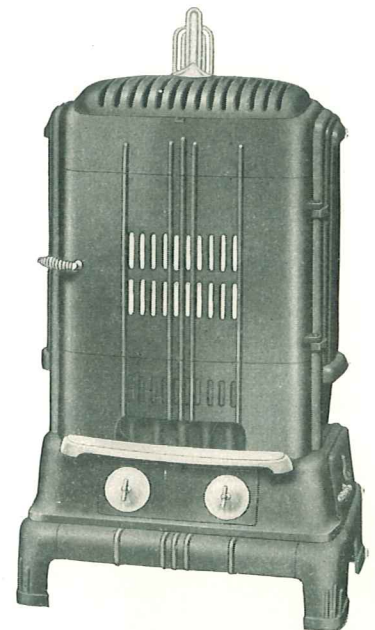
Originality

Highest Quality

Medium Priced

A Sales Leader Which Should
Be On Every Dealer's
Floor

Another Outstanding National, embodying features of Merit and Convenience in its Construction. Combines Greater Luxury and Performance with exceptional operating economy and lasting qualities.



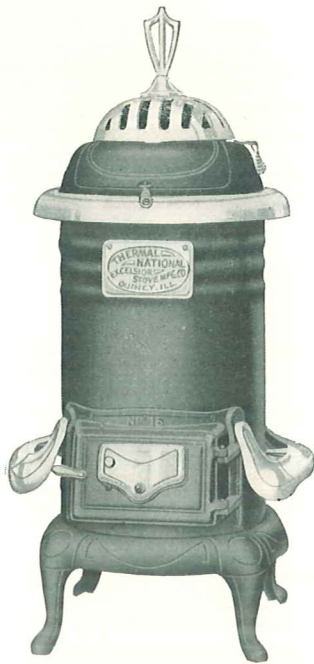
No. 24

Nickel Trimmings consist of top ornament, foot rail and screw drafts.

Specifications and Prices

No.	Size Fire Pot	Size Feed Door Opening	Height Less Urn	Weight	Price
24WN	24x14 $\frac{3}{4}$ x8	20x13 $\frac{1}{2}$	48	335 lbs.	\$61.12
24NR	24x14 $\frac{3}{4}$ x8	20x13 $\frac{1}{2}$	48	330 lbs.	48.75
24	24x14 $\frac{3}{4}$ x8	20x13 $\frac{1}{2}$	48	325 lbs.	45.00

DESIGNED TO FILL A RIGID REQUIREMENT



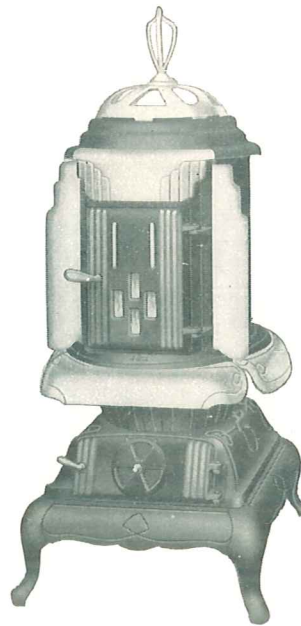
Thermal National

With Hot Blast Tube

For Hard or Soft Coal

This stove is of strictly air-tight construction. Body is made of heavy gauge polished steel with bottom double seamed thereto. Legs fasten into cast iron cleats. Skirtings bolt to legs. It is equipped with check draft in collar, oscillating hot blast tube. Extra large top feed opening. Draw center grate and ash pan.

Nickel Trimmings — Swing top, foot rails, top ring, name plate, damper, urn and keys.



Superb National

Elaborate Oak Heater
For Hard or Soft Coal

An elaborate medium priced oak heating stove, with all the better qualities of the higher priced oak stoves. Large mica feed door with smoke curtain. Shaking and draw center grate. Corrugated fire pot. Polished Steel Body. Sheet Steel ash pan. Cast Bottom. Removable nickel trimmings.

Triple plated nickel trimmings: Urn, swing top, front panel, pilasters, foot rails, feed door strip, keys and knobs.

Specifications and Prices

No.	Diameter Steel Body	Height, Less Urn	Weight	Price
12	12	37½	110 lbs.	\$22.50
14	14	39½	135 lbs.	25.87
16	16	41½	155 lbs.	29.25
18	18	43½	182 lbs.	32.62

Specifications and Prices

No.	Diameter Top Fire Pot	Height Less Urn	Weight	Price
172	16	46½	167 lbs.	\$32.25
192	18	49½	200 lbs.	36.75
Hot Blast Tube, extra.....				1.13
Wood Grate, extra.....				.75
Nickel Base Strips and Feet, extra.....				3.38

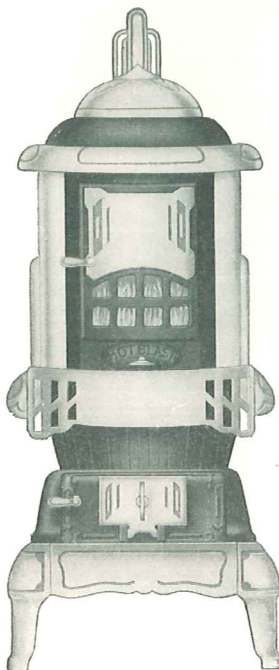
Oakland National

With Cyclone Blast Draft
For Soft or Hard Coal

A high grade oak heating stove built heavy and substantial in all parts. Cyclone draft consists of a damper under feed door and cast section of ring over the top of fire pot, corresponding with width of cast front. Air enters damper and is heated, then discharged from both ends of ring in a swirling motion over fire, supplying the necessary oxygen to completely consume hydro-carbons from the fuel. Feed door is extra large and together with base door and base door damper are machine-fitted, insuring a thoroughly air-tight stove and wood fire-keeper.

Polished hard steel body with over-lapping flange where body connects to cast front, reinforced with cast body strip. Steel body is connected to fire pot with our self sealing joints and will never warp. Corrugated straight form fire pot. Large center heat deflecting ring. Improved shaking and draw center grate is easily removable and shakes through ash door damper opening. Cast skirtings and solid one-piece base with cast-iron bottom. Large sheet steel ash pan. Smoke curtain in feed door. Feed door fitted with mica, protected with perforated tin and outside mica frame. Nickel top ring is of cast iron in four sections. All nickel parts are removable. Top fitted with cover.

Nickel Trimmings: Swing top, top ring, feed door panel, three sections of foot rails, pilasters, front legs, front base strip, ash door damper, keys and urn.



Specifications and Prices

No.	Dia. Top of Fire Pot	Height, Less Urn	Size Opening Feed Door	Weight	Price
165	15	48	8½x12	179 lbs.	\$40.87
185	17	51½	9¼x13½	219 lbs.	45.37
205	19	53½	10½x14	249 lbs.	51.37
*205½		73½	10½x14	268 lbs.	54.37
Wood grate to fit No. 165, extra.....					1.12
Wood grate to fit No. 185, extra.....					1.50
Wood grate to fit No. 205, extra.....					1.87
Hard Coal Magazine on all sizes, except 205½, extra.....					3.00

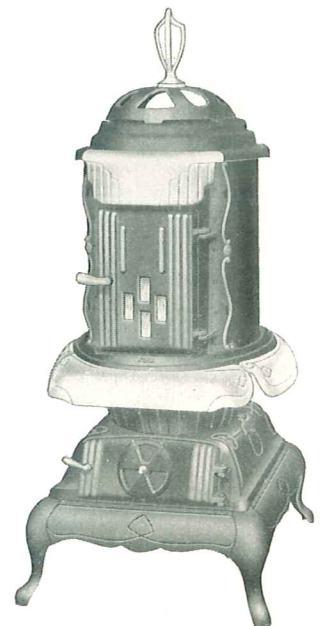
*205½ has 1½ section steel body

Surite National

Plain Oak Heater
For Hard or Soft Coal

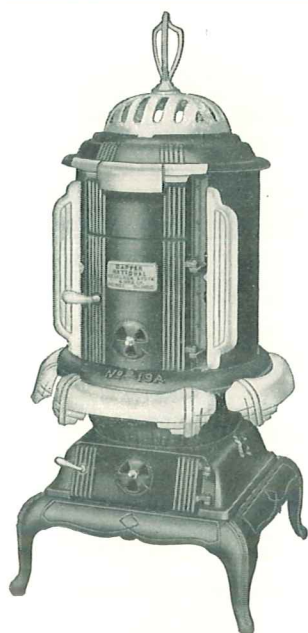
A medium priced oak heating stove of newest design. Identical with the Superb National, but not so elaborately trimmed. Large mica feed door with smoke curtain. Shaking and draw center grate. Corrugated firepot. Polished Steel Body. Sheet Steel ash pan. Cast Bottom. Removable nickel trimmings.

Triple plated nickel trimmings: Urn, front panel, foot rails, feet door strip, keys and knobs.



Specifications and Prices

No.	Diameter Top Fire Pot	Height Less Urn	Weight	Price
172	16	46½	165 lbs.	\$29.25
192	18	49½	195 lbs.	33.75
Hot Blast Tube, extra.....				1.13
Wood Grate, extra.....				.75
Nickel Base Strips and Feet, extra.....				3.38



Dapper National

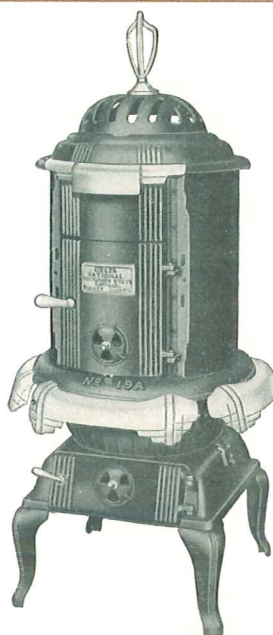
Elaborate Junior Oak Heater
For Hard or Soft Coal

An attractive low priced high grade heater. Equipped with a heavy blue steel body and draw center grate, which shakes through side of base. Has swing top, deep fire pot, cast bottom and steel ash pan. Do not confuse these heaters with the low priced undersize Oak stoves being offered to the trade.

Triple plated nickel trimmings: Urn, urn bottom, pilasters, front panel, foot rails, name plate, knobs and keys.

Specifications and Prices

No.	Diam. Fire Pot	Top Height Less Urn	Weight	Price
15A	14	41	90 lbs.	\$22.13
17A	16	44½	120 lbs.	25.50
19A	18½	48	175 lbs.	23.88



Delta National

Plain Junior Oak Heater
For Hard or Soft Coal

An attractive low priced high grade heater, made to give service. Identical with the Dapper National, but not so elaborately trimmed. Equipped with heavy blue steel body and draw center grate, which shakes through side of base. Has swing top, deep fire pot, cast bottom and steel ash pan.

Triple plated nickel trimmings: Urn, front panel, foot rails, name plate knobs and keys.

Specifications and Prices

No.	Diam. Fire Pot	Top Height Less Urn	Weight	Price
15A	14	41	87 lbs.	\$19.13
17A	16	44½	115 lbs.	22.50
19A	18½	48	171 lbs.	25.88

Dean National

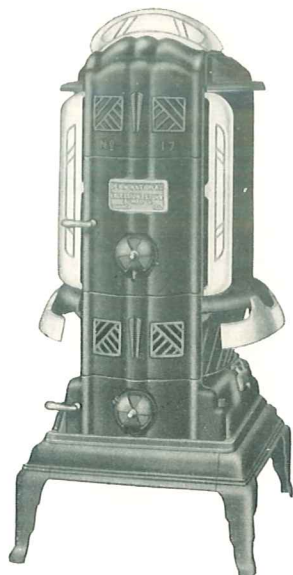
Low Priced Jr. Heater
For Soft or Hard Coal

An attractive low priced oak heater, made to give service. Economy in operation has not been overlooked and special attention has been given to assembling and fitting of all parts. Feed doors are large, fitted with invisible hinges and smoke curtains. Shaking and draw center grates. Ash pan and combination shaker and cold handle door opener, furnished with all sizes. One piece ash pit with cast bottom. Top fitted with cover.

Nickel Trimmings: Foot rails, name plate side wings, top ornament, knobs and turn keys

Specifications and Prices

No.	Dia. of Fire Pot	Top Ht.	Size of Opening Feed Door	Weight	Price
15N	14	42½	8¼ x 9	111 lbs.	\$21.00
17N	16½	45	8¼ x 10	134 lbs.	24.37
19N	18½	48	8¼ x 10	172 lbs.	27.75



Dean National

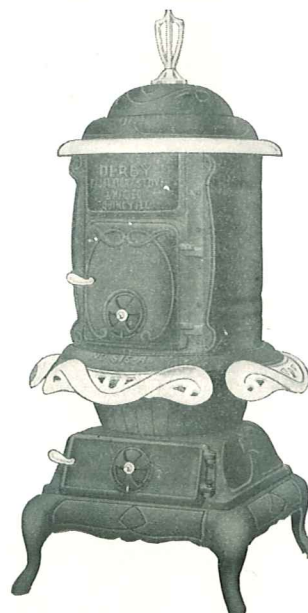
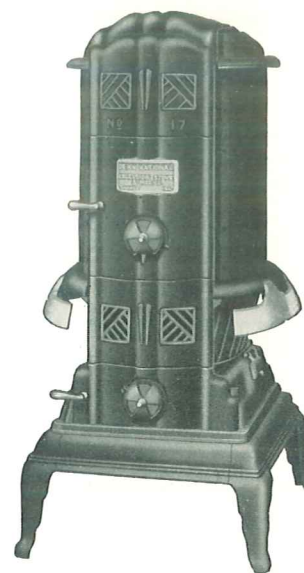
Low Priced Jr. Heater
For Soft or Hard Coal

An attractive low priced oak heater, made to give service. Economy in operation has not been overlooked and special attention has been given to assembling and fitting of all parts. Feed doors are large, fitted with invisible hinges and smoke curtains. Shaking and draw center grates. Ash pan and combination shaker and cold handle door opener, furnished with all sizes. One piece ash pit with cast bottom. Top fitted with cover.

Nickel Trimmings: Foot rails, name plate, knobs and turn keys.

Specifications and Prices

No.	Dia. of Fire Pot	Top Height	Size of Opening Feed Door	Weight	Price
15	14	40½	8¼ x 9	104 lbs.	\$18.75
17	16½	43	8¼ x 10	127 lbs.	22.12
19	18½	46	8¼ x 10	165 lbs.	25.50



Derby National

Junior Oak Heater
For Hard or Soft Coal

A low priced junior heater with blue steel body, draw center grate which shakes through side of base. Swing top, deep fire pot and cast bottom. No. 513A has steel, while Nos. 515A and 517A have cast base strips.

Nickel Trimmings — Three foot rails, turn-keys, knobs, urn and top ring.

Specifications and Prices

No.	Dia. of Fire Pot	Top Ht. Less Urn	Wt. Lbs.	With Nat. Gas Ring	Price Reg.
513A	12	36½	67	\$18.75	\$15.37
515A	14	39	83	22.50	18.37
517A	16	41	110	25.88	21.75
Ash Pan, extra.....					.37



Mascot National

All Cast For Coal or Wood

An all cast heater with duplex grate. Reversing grate and removing end linings converts it into a wood stove. Mica and perforated tin in front door. End doors in two pieces. Deep ash pit with sheet steel ash pan. Hot blast cast linings made in four sections. Swing top. Griddle hole in main top. Reversible smoke collar.

Nickel Trimmings: Front panel, hearth plate, front draft damper, name plate, urn and keys.

Specifications and Prices

No.	Size of Fire Box	Top of Body	Height, Less Urn	Weight	Price
18	9x15	11¼x18	31½	207 lbs.	\$30.37
20	9x17	11¼x20	33½	226 lbs.	33.37
22	10x19	12½x22	35½	250 lbs.	36.37

Station National

All Cast For Coal or Wood

Large and powerful as a furnace. Made extra strong to withstand heavy usage in railroad stations, stores, warehouses, public buildings, etc. Entire body is cast iron. Provided with double feed doors, draw center grate, griddle hole in top and grate which shakes through side of base. Specify if wanted for coal or wood. Coal grate shipped unless otherwise specified. Size double feed door opening, No. 20D 11x16½, No. 24D 13x20½.

Specifications and Prices

No.	Dia. Top of Fire Pot	Height	Weight	Price
20D	20	74	533 lbs.	\$ 81.00
24D	24	84	765 lbs.	118.50
20	Same as 20D without steel drum extension	54	519 lbs.	77.62
24	Same as 24D without steel drum extension	60	747 lbs.	112.50
	Wood grate to fit No. 20 or 20D, extra.			3.37
	Wood grate to fit No. 24 or 24D, extra.			4.50



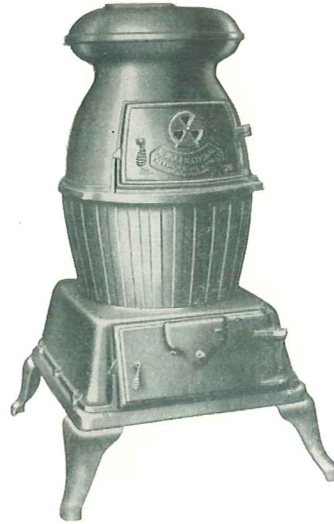
Alaska National

All Cast For Coal

Heavy cast construction throughout. Large fire door. Corrugated fire pot. Draw center grate. Three piece base. All joints tightly fitted. A good substantial cannon stove.

Specifications and Prices

No.	Dia. Top of Fire Pot	Height	Weight	Price
15	15	44½	250 lbs.	\$28.50
18	18	47½	325 lbs.	33.75
20	20	50½	410 lbs.	40.50



Depot National

All Cast For Coal

Made extra heavy and strong throughout. Just the heater for depots, offices, warehouses, stores and other places where stoves are subjected to hard usage. Made with broad flat top providing a warming space for vessels. Fitted with shaking and dumping grate, removable lug on ash door with draft register. Size collar 7 inches.

Specifications and Prices

No.	Dia. Top of Fire Pot	Height	Weight	Price
191	17½	43½	250 lbs.	\$30.75
211	19	46½	312 lbs.	34.87



Cannon National

All Cast For Coal

A smooth finish cannon stove. Has shaking and dump grate, slide draft ring, large ash space and flat top with cover hole. Arranged to use sheet steel drum if desired.

Specifications and Prices

No.	Dia. Top of Fire Pot	Height	Weight	Price
14	10½	36	92 lbs.	\$13.50
16	12	38	107 lbs.	15.75
18	13½	41	139 lbs.	18.00
20	16	49	225 lbs.	27.00
22	19	53	314 lbs.	34.12



Depot National

All Cast For Coal

Similar in all respects to above, except it has cone top with shelf to provide a warming space. Only the best of material and workmanship enter its construction. Size collar 7 inches.

Specifications and Prices

No.	Dia. Top of Fire Pot	Height	Weight	Price
191A	17½	43½	260 lbs.	\$32.25
211A	19	46½	305 lbs.	36.37



Globe National

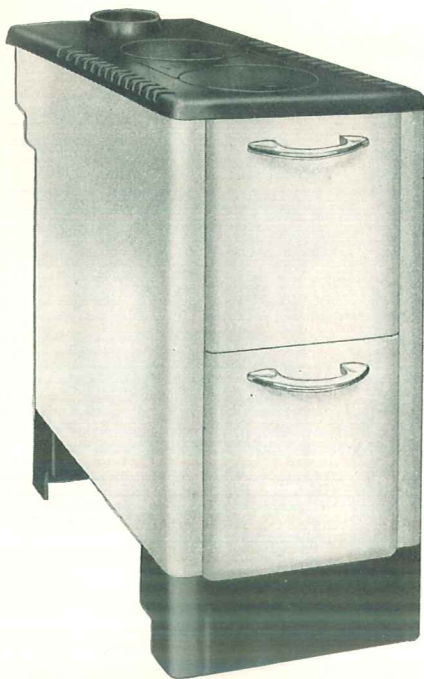
All Cast For Coal

A handsome, low priced, all cast iron cannon stove, made of same grade material and workmanship as all Nationals, which insures neat castings and fittings. Sheet steel drum may be mounted thereon without use of extra ring.

Specifications and Prices

No.	Dia. Top of Fire Pot	Height	Weight	Price
3	9	22	35 lbs.	\$ 7.12
4	10	23	43 lbs.	8.25
5	11	26	53 lbs.	9.37
6	12	27	67 lbs.	11.62
7	13	31	79 lbs.	13.50





Kitchen Heater

Pomp National

White Enameled

A new up-to-date circulating kitchen heater, built especially for attaching to any gas or electric range. Can also be used to consume garbage and other refuse, heat water in kitchen boiler and supplement work of gas range in boiling, frying and other cooking operations. Burns coal, coke, wood and waste paper. Standard height 36 inches. Top is made in sections to permit proper expansion and contraction, and is polished and blued. Has two eight inch covers and one short center. Built with revertible flue, which conserves fuel and increases heating capacity, consequently it should not be compared with straight draft kitchen heaters. May be placed on right or left of range. Equipped with duplex grates and large ash pan. Oval collar. Strictly modern.

Specifications and Prices

Number	Main Top	Height Body	Depth Body	Fire Box	Weight	Price
836	16x27	36	26	17x8x9	200 lbs.	\$39.75
	Special Cast Water Front fitted in stove, extra					5.55
	Special Cast Water Front separate from stove, extra					7.05
	If wanted with four pipe water coil, extra					5.25

Ready National

Kitchen Heater

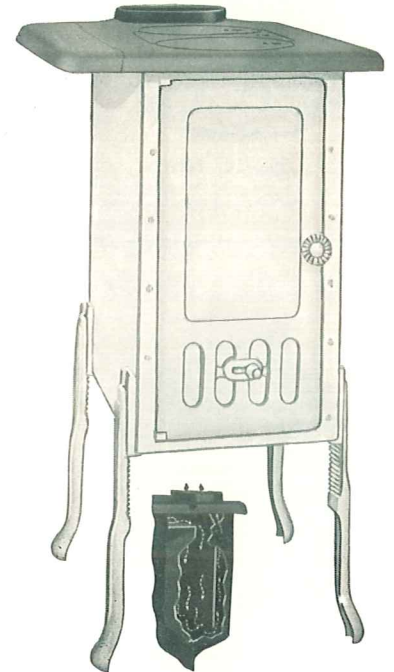
With Revertible Flue

Built in all respects, similar to Hardy National shown above, except that it is fitted with revertible flue, which conserves fuel and increases heating capacity. Burns coal, coke, wood or waste paper. Mounted on legs which can be adjusted so top fits flush with top of any gas range standing 30 inches high. Top is

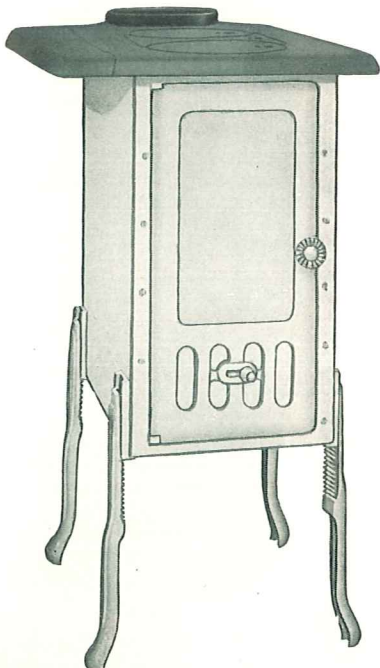
exceptionally large, fitted with two 8-inch covers and one loose short center. Duplex grates, heavy cast linings and deep fire box. One shelf furnished with each stove. Can be attached to right or left of gas range. No. 8 has plain top and blue polished steel body. Nos. 8E, 8ITG and 8W have polished tops and body of heavy enameling steel. No. 8E is finished in white enamel with gray enamel door, front and legs, and No. 8ITG is finished in ivory tan with green enamel cast front, door and legs and No. 8W is finished all white. Legs to adjust height of stove to 36 inches furnished on special order if desired. Specify if wanted.

Specifications and Prices

Number	Main Top	Height Body	Width Body	Fire Box	Weight	Price
8	14x27	21 1/2	11	17x8x9	150 lbs.	\$22.87
8E	14x27	21 1/2	11	17x8x9	155 lbs.	30.75
8ITG	14x27	21 1/2	11	17x8x9	155 lbs.	30.75
8W	14x27	21 1/2	11	17x8x9	155 lbs.	30.75
	Special Cast Water Front fitted in stove, extra					5.55
	Special Cast Water Front separate from stove, extra					7.05
	If wanted with four pipe water coil, extra					5.25
	Extra Side Shelf, plain, extra					.75
	Extra Side Shelf, polished, extra					1.12
	Polished Top for No. 8, extra					1.12



Revertible Flue



Kitchen Heater

Hardy National

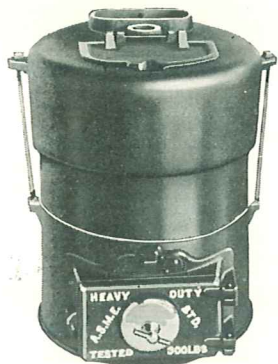
Enameled or Plain

A thoroughly well built and practical appliance which can be attached to any gas range. In addition to heating kitchen, it can be used to consume garbage and other refuse, heat water in kitchen boiler, and supplement work of gas range in boiling, frying and other cooking operations. Burns coal, coke, wood and waste paper and operates exactly like a small stove. Mounted on four legs which can be adjusted to make top come flush with top of any range that stands 30 inches high. Large cast top with two 8-inch covers and one 8-inch loose short center. Duplex grates, heavy cast linings and deep fire box. Can be attached to right or left of gas range. One shelf furnished with each stove. No. 8 has plain top and blue polished steel body. Nos. 8E, 8ITG and 8W have polished tops and body of heavy enameling steel. No. 8E is finished in white enamel with gray enamel door, front and legs, and No. 8ITG is finished in ivory tan with green enamel cast front, door and legs and No. 8W is finished all white. Legs to adjust height of stove to 36 inches furnished on special order if desired. Specify if wanted.

Specifications and Prices

Number	Main Top	Height Body	Width Body	Fire Box	Weight	Price
8	14x22 1/2	21 1/2	11	17x8x9	126 lbs.	\$19.87
8E	14x22 1/2	21 1/2	11	17x8x9	136 lbs.	27.00
8ITG	14x22 1/2	21 1/2	11	17x8x9	136 lbs.	27.00
8W	14x22 1/2	21 1/2	11	17x8x9	136 lbs.	27.00
	Special Cast Water Front fitted in stove, extra					5.55
	Special Cast Water Front separate from stove, extra					7.05
	If wanted with four pipe water coil, extra					5.25
	Extra Side Shelf, plain extra					.75
	Extra Side Shelf, polished, extra					1.12
	Polished Top for No. 8, extra					1.12

National Hot Water Supply Boilers



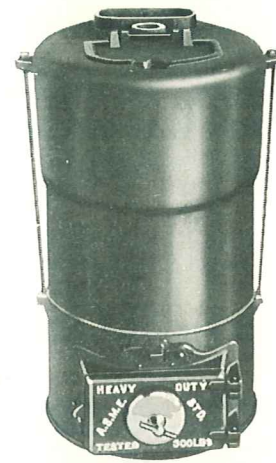
No. 55—10" Grate



No. 70—10" Grate



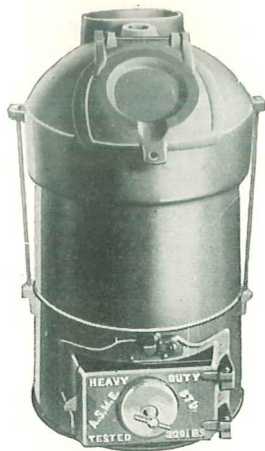
No. 90—10" Grate



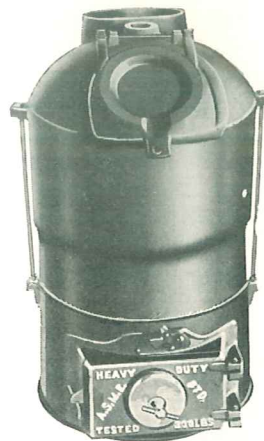
No. 130—10" Grate



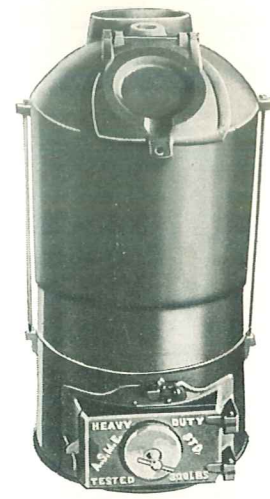
No. 65—10" Grate



No. 80—10" Grate



No. 95—10" Grate



No. 140—10" Grate



No. 125—10" Grate

No. 250—12" Grate

Cast-iron painted a striking shade of bright red enamel trimmed with green, black and gold. Tested by hydrostatic pressure in accordance with the Standards of the American Society of Mechanical Engineers. Test pressure and the maximum allowable working pressure is plainly marked on each supply boiler. Rocking grate and screw draft regulator are standard equipment.

Specifications and Prices

No.	Capacity Gals. 25°	Capacity Gals. 40°	Height	Tappings	Depth of Fire	Smoke Collar	Weight	Price
LOW FLAT TOP BOILERS								
55	55	40	17"	1"	5½"	5	82 lbs.	\$ 9.00
*70	70	52	20"	1"	8½"	5	100 lbs.	10.50
HIGH FLAT TOP BOILERS								
90	90	66	19"	1"	9"	5	103 lbs.	11.70
*130	130	80	22"	1"	12"	5	118 lbs.	13.20
LOW DOME TOP BOILERS								
65	65	45	19"	1"	7"	5	85 lbs.	9.30
*80	80	52	22"	1"	10"	5	100 lbs.	11.40
*210	210	120	26"	2"	11"	5	150 lbs.	22.50
MEDIUM DOME TOP BOILERS								
95	95	66	22"	1"	10"	5	105 lbs.	12.90
*140	140	82	24¾"	1"	13"	5	120 lbs.	15.45
HIGH DOME TOP BOILERS								
125	125	75	25"	1"	12"	5	115 lbs.	13.80
*150	150	100	28"	1"	15"	5	130 lbs.	16.80
250	250	150	24"	2"	10"	5	155 lbs.	23.85
*275	275	200	30"	2"	16"	5	185 lbs.	26.10

*Brick Lined.



No. 150—10" Grate

No. 275—12" Grate

GUARANTEED HIGH GRADE

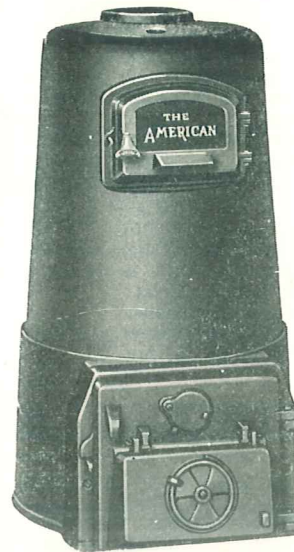
National Hot Water Supply Boilers



No. 415—15" Grate



No. 312—12" Grate



No. 400—12" Grate

No. 500—15" Grate



Galvanized Pressure Boilers

Standard Weight — Welded. Maximum working pressure 85 lbs. Standard tapping as shown in illustration.

Specifications and Prices

No.	Size In.	Capacity Gals.	Wt. Lbs.	Price
30	12x60	30	70	\$12.00
52	16x60	52	100	24.00

Pressure Boiler Stands

Made of cast iron, smooth and sturdy.

No.	Weight	Price
1—Fits 30 Gal. Pressure Boiler....	6 lbs.	\$1.50
2—Fits 52 Gal. Pressure Boiler....	15 lbs.	3.00

Heavy Duty Supply Boilers

Nos. 400 and 500 built with dome and fire pot in one piece. No. 312 uses one screw nipple between fire pot and dome section and one inlet and one outlet tapping. No. 415 has a crown section built as part of the fire pot section. Two push nipples are used to connect dome section to crown and fire pot sections. Two inlets and one outlet are used. All four sizes are equipped with triangular grates.

Specifications and Prices

No.	Cap. Gal. 25°	Cap. Gal. 40°	Height	Tappings	Depth of Fire	Smoke Collar	Weight	Price
312	275	200	30"	2"	11"	5"	300 lbs.	\$31.35
415	450	325	40½"	*	15"	6"	475 lbs.	60.45
400	250	175	28"	2"	10½"	6"	270 lbs.	29.70
500	400	275	33"	2"	14"	6"	425 lbs.	53.40

*No. 415 has two 2" inlet tappings and one 2½" outlet tapping, also two ½" tappings.

Incinerator Tank Heater



No. 92 Coal Burning Incinerator Tank Heater is a combination garbage burner (does away with unhealthy, smelly garbage containers) and an economical heater of hot water.

Upper section holds nearly one-half bushel of garbage which is fed through the large feed door. Center section is a cored casting (forming part of firepot) through which water circulates and is heated. Fuel is fed through center feed door. Top of cored water section forms bottom of garbage section. Garbage is dried by the hot coal fire—then disintegrates and drops through slots and is consumed. 5" smoke collar.

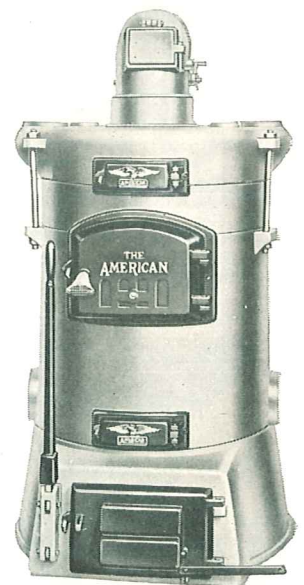
Profit by selling the savings and convenience of No. 92 to your customers.

Specifications and Prices

No.	Cap. Gal. 25°	Cap. Gal. 40°	Height	Tappings	Depth of Fire	Weight Lbs.	Price
92	92	66	34"	1"	10"	160	\$20.40

Hot Water Supply Boilers

300 and 400 Series



The American 300 and 400 Series Hot Water Supply Boilers are all made with a heavily corrugated dome section. The 400 Series has an additional corrugated crown section as shown in the cut at the right. These sections attach to the fire pot section with two push nipples. Clinker doors and Rocking Grates are standard equipment.

Specifications and Prices

No.	Capacity Gal. 25°	Capacity Gal. 40°	Height	Grate Diam.	Tappings	Depth of Fire	Smoke Collar	Weight Lbs.	Price
317	500	350	48½"	17"	2"	15"	6"	600	\$ 75.60
319	650	450	50½"	19"	2½"	15"	7"	750	93.60
322	900	650	52¾"	22"	3"	15"	8"	900	130.35
325	1200	850	55"	25"	3½"	16½"	9"	1045	155.40
328	1500	1050	54½"	28"	3½"	15"	9"	1220	189.90
417	575	400	53½"	17"	2"	15"	6"	700	87.90
419	775	525	55½"	19"	2½"	15"	7"	870	109.35
422	1050	725	58"	22"	3"	15"	8"	1050	148.50
425	1350	925	60"	25"	3½"	16½"	9"	1230	177.30
428	1700	1200	59¼"	28"	3½"	15"	9"	1450	225.60

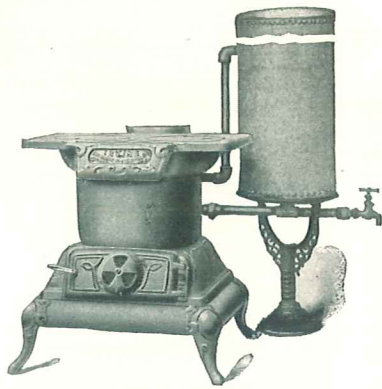
*These Boilers have two inlet and two outlet tappings, two 2" water relief tappings and two ½" tappings for thermometer and pressure gauge.

SUPERIOR IN QUALITY AND SERVICE

Irving National

Water Heater For Coal

A water heating laundry and garage stove made entirely of cast iron, having fifty square feet of direct radiation and a capacity of seventy-five gallons of water per hour. Fire pot is a cast iron boiler 11 1/4 inches in diameter inside and 8 inches deep with one inch water space all around, which is divided, providing perfect circulation without any noise. Sheet steel ash pan. Steel



base and cast bottom. Used in all places where liberal supply of hot water is in constant demand.

NOTE: Price does not include pressure boiler or pipe connection.

Specifications and Prices

No.	Holes	Height of Stove	Top Space	Weight	Price
82	Two 8-inch	24	15 x 22 1/2	138 lbs.	\$23.25
84	Four 8-inch	25	22 1/2 x 23 1/2	168 lbs.	27.00

Tip Top National

Laundry Stove For Coal

An extra large laundry stove, made entirely of cast iron, mounted on steel skirtings. Provided with straight form corrugated fire pot, large swing feed door and ash pit, shaking and draw center grate.



Specifications and Prices

No.	Holes	Diam. Top of Fire Pot	Height of Stove	Top Space	Weight	Price
82	Two 8-inch	11	22 1/2	15 x 22 1/2	81 lbs.	\$11.62
82GR	Gas Ring fitted in Stove					14.25
84	Four 8-inch	13 1/2	25	22 1/2 x 23 1/2	115 lbs.	16.50
84GR	Gas Ring fitted in Stove					20.62
Water Back fitted in No. 84, extra						5.25
Water Back separate from No. 84, extra						5.25

Charm National

Laundry Stove For Coal

Made with large top, fancy base, cone or draw center grate, corrugated fire pot extra large feed door and large ash pit. Cone center grate shipped unless otherwise ordered.



Specifications and Prices

No.	Holes	Diam. Top of Fire Pot	Height of Stove	Top Space	Weight	Price
83	Two 8-inch	10 1/2	21 1/2	15 x 21	62 lbs.	\$ 9.00
38	Two 8-inch	12	21 1/2	15 x 21	68 lbs.	10.50
83WC—Same as No. 83 with water coil						13.50

Jet National

Water Heater For Coal

A laundry and garage stove with water heating fire pot. The pot is made to heat water connected to a pressure boiler. A division inside the water space insures perfect circulation without noise, and heats a large amount of water. Provided with cast iron legs, steel base and cast bottom.



Specifications and Prices

No.	Holes	Height of Stove	Top Space	Weight	Price
80	Two 8-inch	23 3/4	11 1/2 x 19 1/2	87 lbs.	\$17.25

National Furnaces

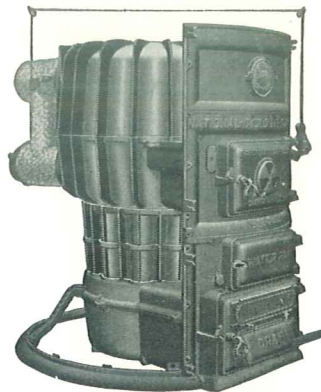
The Acme of Perfection in the Warm Air Heating and Ventilating Field

Constructed Entirely on Scientific and Practical Principles

A Type for Every Purpose

Write for Catalogue and Prices

Excelsior Stove & Mfg. Co.
Quincy, Illinois



Charm National

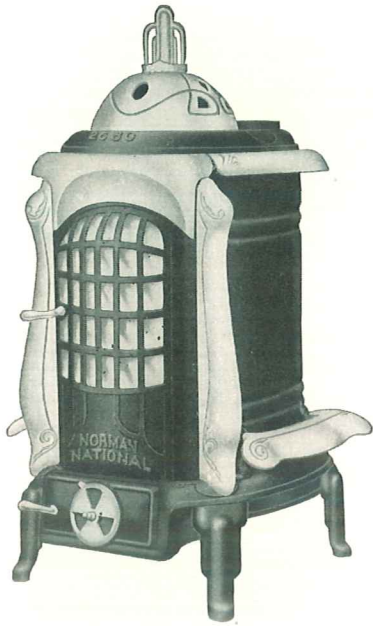
Laundry Stove For Coal

Made with large top, fancy base, cone or draw center grate, corrugated fire pot and large ash pit. Feeds through covers. Cone center grate shipped unless otherwise ordered.



Specifications and Prices

No.	Holes	Diam. Top of Fire Pot	Height of Stove	Top Space	Weight	Price
84	Four 8-inch	12	21 1/2	21 1/2 x 21 1/2	90 lbs.	\$12.75



Norman National

Blue Polished Steel Body

For Wood Only

The last word in Parlor wood stoves. Construction covering every feature that can make for highest class of efficiency, durability and convenience. Heavy polished steel body. Demountable solid cast iron linings. Extra long, deep ash pit and pan. Loose bottom wood grate. Large mica feed door protected with perforated tin. Deep cast top with deflector and check damper. Nos. 21-24N and 24-27N are provided with 9" cover, while No. 26-30N has two 7" covers and one loose center. Handsome demountable nickel trimmings. Nickel swing top, urn, top ring, pilaster, foot rails, deflector plate and draft register wheel.

Specifications and Prices

Number	Length	Width	Height Lining	Height Inside Body	Weight	Price
21-24N	21	15	11	24	185 lbs.	\$41.25
24-27N	23	17	12½	27	223 lbs.	44.62
26-30N	25½	19	14	30	255 lbs.	48.75

If wanted without Nickel Pilasters, deduct..... 1.87

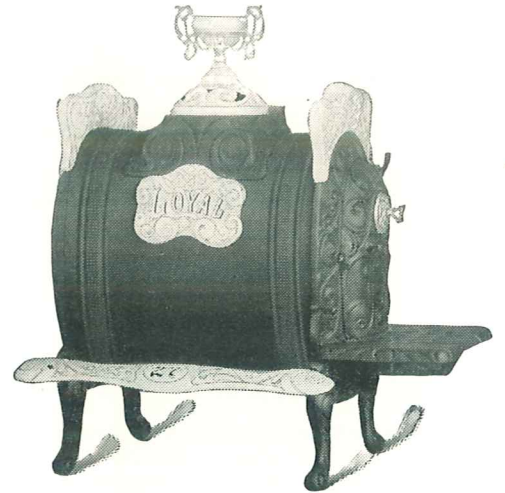
Loyal National

Blue Polished Steel Body

For Wood Only

An exceptionally popular heater with heavy polished steel body and extra heavy sectional cast linings. Automatic damper, operating in conjunction with door, is also accessible for independent use and with smoke curtain effectively prevents smoke escaping into room. Collar is reversible, to facilitate pipe fitting. Hot blast is provided through feed door damper and cast duct inside extending to hearth line.

Triple-Plated Nickel Trimmings: Double faced front and back top ornaments, swing top, urn, name plate, foot rails and keys.



Specifications and Prices

Number	Length Wood	Weight	Price
29	27	178 lbs.	\$39.37
31	29	180 lbs.	40.87



Jumbo National

Made of Blue Steel

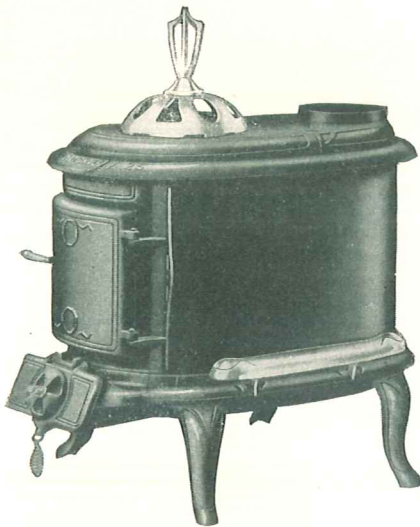
For Wood Only

An exceptionally heavy air tight heater, with cast top, built especially for stores, halls, schools, large buildings, etc. Heavy blue steel body, with double corrugated inside bottom and 20 gauge steel lining. Extra heavy construction, with six legs. Cast elbow reinforced with cast plate on inside. Safety draft. Swing feed door opening measures 17x19 inches. Inverted smoke collar to prevent creosoting. Match striker top.

Specifications and Prices

No.	Length	Width	Body Height	Weight	Price
232	32	22	24	110 lbs.	\$19.87
236	36	23	30	140 lbs.	23.62

SUPERIOR TO MANY, THE EQUAL OF ANY



Fir National

With Swing Top

For Wood Only

Made with extra heavy blue steel body. Deep solid one piece cast corrugated bottom. Large lift up ash door with automatic catch. Steel body mounts inside cast bottom. Cast lining all around inside lower edge of steel body. Mounted without rods. Legs bolt on. Self-mounting foot rails. Large swinging top feed opening. Cast front and door.

Nickel Trimmings—Urn, swing top, foot rails and keys.

Specifications and Prices

No.	Holes	Length Wood	Height, Less Urn	Weight	Price
18N	One 7-inch	18	24½	70 lbs.	\$13.50
22N	One 8-inch	22	26½	84 lbs.	15.75
25N	One 8-inch	25	28	94 lbs.	17.25
28N	One 8-inch	28	30	110 lbs.	19.50

Fir National

With Swing Top

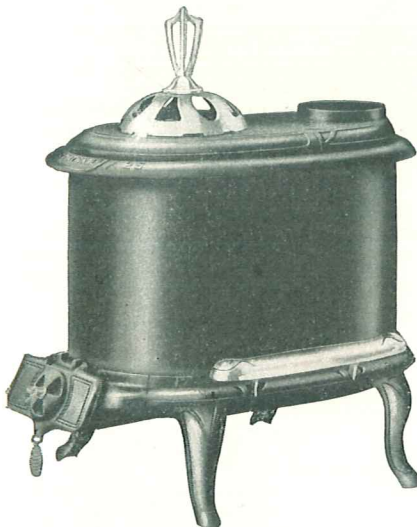
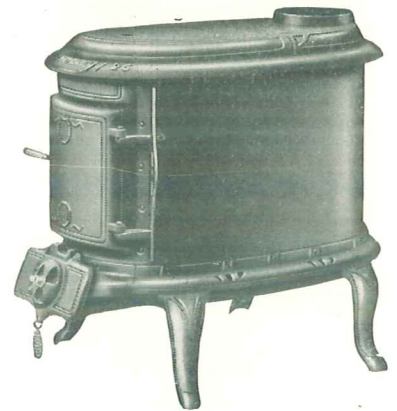
For Wood Only

Made with extra heavy blue steel body. Deep solid one piece cast corrugated bottom. Large lift up ash door with automatic catch. Steel body mounts inside cast bottom. Cast lining all around the inside lower edge of steel body. Mounted without rods. Legs bolt on. Large swinging top feed opening. Cast front and door.

Identical with "N" Series shown above, with omission of nickel trimmings. A very popular seller.

Specifications and Prices

No.	Holes	Length Wood	Height	Weight	Price
18P	One 7-inch	18	22	67 lbs.	\$11.25
22P	One 8-inch	22	24	77 lbs.	13.50
25P	One 8-inch	25	25½	85 lbs.	14.62
28P	One 8-inch	28	27½	100 lbs.	16.87



Fay National

With Swing Top

For Wood Only

Made with extra heavy blue steel body. Deep solid one piece cast corrugated bottom. Large lift up ash door with automatic catch. Steel body mounts inside cast bottom. Cast lining all around the inside lower edge of steel body. Mounted without rods. Legs bolt on. Self-mounting foot rails. Large swinging top feed opening.

Nickel Trimmings—Urn, swing top, foot rails and keys.

Specifications and Prices

No.	Holes	Length Wood	Height, Less Urn	Weight	Price
18N	One 7-inch	18	24½	63 lbs.	\$12.00
22N	One 8-inch	22	26½	76 lbs.	13.87
25N	One 8-inch	25	28	84 lbs.	15.37
28N	One 8-inch	28	30	102 lbs.	17.62

Fay National

With Swing Top

For Wood Only

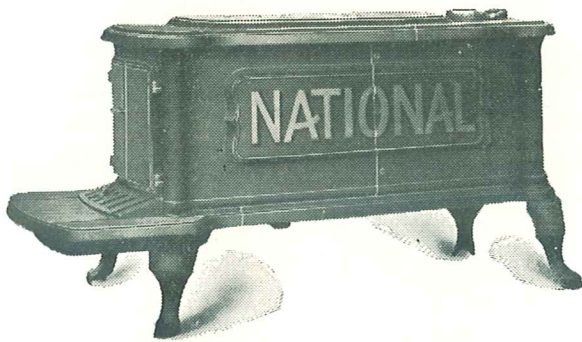
Made with extra heavy blue steel body. Deep solid one piece cast corrugated bottom. Large lift up ash door with automatic catch. Steel body mounts inside cast bottom. Cast lining all around inside lower edge of steel body. Mounted without rods. Legs bolt on. Large swinging top feed opening.

Identical with "N" Series shown above, without nickel trimmings.

Specifications and Prices

No.	Holes	Length Wood	Height	Weight	Price
18P	One 7-inch	18	22	60 lbs.	\$ 9.75
22P	One 8-inch	22	24	69 lbs.	11.62
25P	One 8-inch	25	25½	76 lbs.	12.75
28P	One 8-inch	28	27½	91 lbs.	15.00





Mammoth National

Cast Heater

For Wood Only

Extra large wood heater, designed for rough usage. It accommodates cord-wood lengths without sawing. Built in the most substantial manner. Rods are thoroughly protected from fire. Top, sides and bottom are cut in sections to prevent cracking. Removable Top. Eight inch smoke collar. Legs fit into duffs.

Specifications and Prices

No.	Hole	Top Opening	Size Opening Fire Door	Length Wood	Weight	Price
55	One 9-inch	13x32	15x23	48	557 lbs.	\$75.00
53—Flue Drum to fit above stove.....					77 lbs.	11.62

With Swing Top

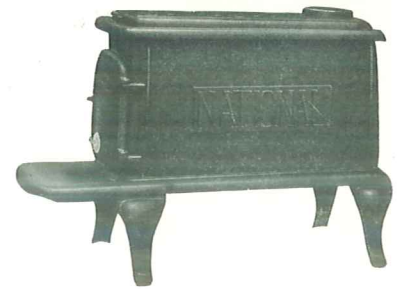
National Box

For Wood Only

This is a strictly high grade, new and handsome plain pattern, embodying all modern improvements. It has exceptionally large fitting joints, which prevent air leakage. Large feed door. Balanced draw out hearth slide. Mounted without use of rods, allowing free expansion and contraction of all castings. This prevents cracking. Corrugated bottoms insure durability and strength. Nos. 33 and 37 have cut sides.

Specifications and Prices

No.	Holes	Size Opening Fire Door	Length of Wood	Weight	Price Crated	Price Not Crated
21	One 7-inch	8 x 8 $\frac{3}{4}$	21	70 lbs.	\$10.20	\$ 9.52
25	One 7-inch	9 $\frac{1}{2}$ x10 $\frac{1}{2}$	25	90 lbs.	14.25	13.50
29	Two 7-inch	9 $\frac{3}{4}$ x11 $\frac{1}{4}$	29	119 lbs.	16.20	15.37
33	Two 8-inch	11 x13	33	156 lbs.	20.02	19.12
37	Two 8-inch	11 x13	37	170 lbs.	24.22	23.25



Longwood National

Cast Lined

For Wood Only

A first quality, air tight heater, with cast iron front, top and bottom. Front and sliding top feed doors both with large openings. Wheel register draft opening and check draft in top. A handy wood burning heater with cast linings in three sections. Reversible collar, a convenience for low flue openings and swing ash door with turnkey. Nickel top ring, foot rails, swing top, urn, knob and turnkey. No. 28 not made with nickel ring.

Specifications and Prices

No.	Length	Width	Body Height	Feed Door Opening	Top Feed Opening	Weight	Price
21	21	16	24	10 $\frac{1}{4}$ x10 $\frac{1}{2}$	11 $\frac{1}{2}$ x12 $\frac{3}{4}$	110 lbs.	\$18.75
24	24	17	24	10 $\frac{1}{4}$ x10 $\frac{1}{2}$	13 x13 $\frac{1}{4}$	121 lbs.	20.25
26	26	18	24	10 $\frac{1}{4}$ x10 $\frac{1}{2}$	15 $\frac{1}{2}$ x13 $\frac{3}{4}$	128 lbs.	21.75
28	28	18	24	10 $\frac{1}{4}$ x10 $\frac{1}{2}$	18 $\frac{3}{4}$ x14	160 lbs.	23.25

If wanted with Nickel Foot Rails, extra..... 1.50
 If wanted with Nickel Top Ring No. 21, extra..... 2.62
 If wanted with Nickel Top Ring No. 24 and 26, extra..... 3.00



Steel Lined

Kenwood National

For Wood Only

A first quality air tight heater with cast iron front, top and bottom. Front feed door has large opening. Sheet steel adjustable linings are 15 inches high. Wheel register draft opening and check draft in top. Nickel swing top, name plate and turnkey. An excellent seller.

Specifications and Prices

No.	Length	Width	Body Height	Feed Door Opening	Weight	Price
118A	18	13	15	10 $\frac{1}{4}$ x10 $\frac{1}{2}$	63 lbs.	\$10.50
121A	21	16	18	10 $\frac{1}{4}$ x10 $\frac{1}{2}$	82 lbs.	12.75
221A	21	16	24	10 $\frac{1}{4}$ x10 $\frac{1}{2}$	85 lbs.	13.50
224A	24	17	24	10 $\frac{1}{4}$ x10 $\frac{1}{2}$	92 lbs.	15.00
226A	26	18	24	10 $\frac{1}{4}$ x10 $\frac{1}{2}$	98 lbs.	16.50

Nickel Foot Rails, extra..... 1.50
 Nickel Top Ring, Nos. 121A-221A, extra..... 2.62
 Nickel Top Ring, Nos. 224A-226A, extra..... 3.00





Pilot National

Steel Lined For Wood Only

A new down draft wood heater, made of heavy blue steel with cast top and bottom and an exceptionally large top swing feed opening. Check damper in top. Sheet steel adjustable linings. Cast elbow is reinforced with cast ring inside of body. Reversible collar is a convenience for low flue openings. Nickel swing top and urn.

Specifications and Prices

No.	Lgth.	Wdth.	Body Height	Weight	Price
21	21	16	20	73 lbs.	\$13.12
24	24	17	22	80 lbs.	14.62
26	26	18	24	85 lbs.	16.12

Nickel Foot Rails, per pair, extra..... 1.50
 Nickel Top Ring, No. 21, extra..... 2.62
 Nickel Top Ring, Nos. 24 and 26, extra... 3.00



Birchwood National

Made of Blue Steel For Wood Only

A first quality air tight heater with cast front door and cast top, with top feed. Large openings. Adjustable steel linings are 15 inches high. Screw register draft opening in front and check draft in top. Inverted smoke collar to prevent creosoting. Match striker top. Nickered drop handles on top feed opening and door and nickel screw register. Top feed opening 11½x11¼ inches. Body Height 24 inches. Feed Door Opening 8½ x 12 inches.

Specifications and Prices

No.	Lgth.	Wdth.	Wt.	Price
221	21	16	40	\$10.12
224	24	17	60	10.50
226	26	18	65	10.87

Nickel Rails, extra..... 1.50

Worthy National

Made of Blue Steel Cast Top

A first class down draft heater. Made of No. 27 gauge blue steel, with double-seamed bottom, reinforced cast draft opening, cast elbow and heavy steel linings. Cast legs are securely fastened into cleats on bottom and are self-locking. Cast draft is machined and fitted absolutely air tight. Measurements are full. Built throughout for strength. Length of stove shown is without front draft. Top feed lid opening is 11½x11¼ inches. Smoke collar is inverted to prevent creosoting. Cast match striker top.



Specifications and Prices

No.	Length	Width	Body Height	Weight	Price
221	21	16	18	49 lbs.	\$9.00
224	24	17	24	57 lbs.	9.37
226	26	18	24	64 lbs.	9.75

Nickel Foot Rails, per pair, extra..... 1.50



Worthy National

Steel Lined For Wood Only

A down draft air tight wood heater, made of No. 27 gauge blue steel with double seamed bottoms, reinforced cast draft opening, one piece cast elbow and heavy steel linings. Cast legs are securely fastened into clips on bottom and are self-locking. Cast draft is machined and fitted absolutely air tight. Extra strong. Length of stove shown is without front draft. Nickel urn and knob.

Specifications and Prices

No.	Lgth.	Wdth.	Hgt. Body	Wt. Lbs.	Price
121	21	16	18	32	\$7.12
24	24	17	24	37	7.50
26	26	18	24	40	7.87

Nickel Foot Rails, per pair, extra. 1.50
 Nickel Top Ring, No. 121, extra... 2.62
 Nickel Top Ring, No. 26, extra... 3.00

Birchwood National

Made of Blue Steel For Wood Only

A first quality air tight heater with cast front feed door, having a large opening. Adjustable steel linings are 15 inches high. Screw register draft opening in front and check draft in top. Large flat cooking surface on top. Nickel drop handle and screw register. Body Height 24 inches. Feed Door Opening 8½x12 inches.

Specifications and Prices

No.	Length	Width	Weight	Price
21	21	16	35 lbs.	\$7.87
24	24	17	40 lbs.	8.25
26	26	18	45 lbs.	8.62

Nickel Foot Rails, per pair, extra.... 1.50
 Nickel Top Ring, No. 21, extra..... 2.62
 Nickel Top Ring, No. 26, extra..... 3.00



Paragon National

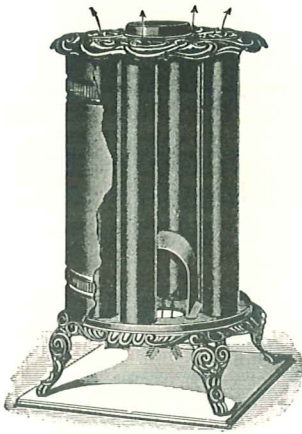
Made of Blue Steel For Wood Only

A low priced, well made, air tight heater furnished lined or unlined. Nickel urn and ash door drop handle. Extra large fuel cover made in one piece. Convenient for large wood. Tops deflected to prevent warping. Cast iron legs. Cast draft with automatic lift up ash door will stay open when removing ashes.

Specifications and Prices

No.	Length	Width	Body Height	Size Collar	Weight	Price
018 Unlined	18	14	12	6	21 lbs.	\$2.62
021 Unlined	21	16	18	6	26 lbs.	3.75
024 Unlined	24	17	24	6	29 lbs.	4.27
18 Lined	18	14	15	6	22 lbs.	2.92
121 Lined	21	16	18	6	28 lbs.	4.12
24 Lined	24	17	24	6	31 lbs.	4.80
26 Lined	26	18	24	6	33 lbs.	5.55

Nickel Foot Rails, Nos. 121-24-26, extra..... 1.50
 Nickel Top Ring, No. 121, extra..... 2.62
 Nickel Top Ring, No. 26, extra..... 3.00



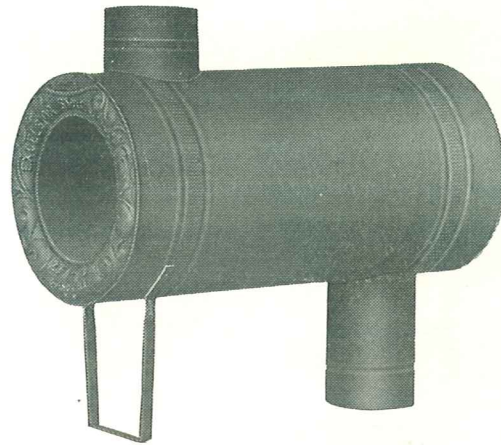
Excelsior Drum

For Soft Coal, Hard Coal or Wood

Built especially for use in second floor rooms by connecting to smoke pipe of heater in room below. It has four ventiduct tubes 3½ inches in diameter, which circulate air from floor through ducts, and out at top. Diameter of body 17 inches. Height of body 24 inches.

Specifications and Prices

No.	Size Pipe	Weight	Price
16	6	57 lbs.	\$ 8.62
17	7	57 lbs.	9.00
16 Castings and Rods			
	Only	45 lbs.	5.62
17 Castings and Rods			
	Only	45 lbs.	6.00



Flue Drum

With Cast Iron Heads

Made of blue steel with cast iron heads and designed to fit on top of box stoves to increase their efficiency by providing additional radiating surface.

Specifications and Prices

No.	Length	Size Pipe	Weight	Price
28	28	6	31 lbs.	\$ 6.00
32	32	6	34 lbs.	6.75
36	36	6	54 lbs.	7.50
53	53	7	77 lbs.	11.62

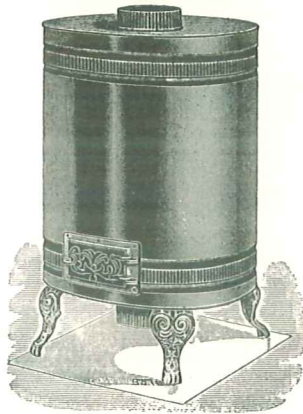
Dandy Heating Drum

For Soft Coal, Hard Coal or Wood

Made of smooth steel with clean-out soot door in front and heat retainer inside. Each drum substantially crated. Body 21 inches long and 24 inches high.

Specifications and Prices

No.	Size Pipe	Weight	Price
21	6	24 lbs.	\$5.62



National Radiator

For Soft Coal, Hard Coal or Wood

Made of all sheet steel with ventiduct tubes, which circulate the air of the room continually. The deflector plates maintain the products of combustion around the tubes and against the interior of the body. Can be attached directly to a stove collar or to the stove pipe in room above.

Specifications and Prices

No.	Size Body	Size Pipe	No. of Tubes	Weight	Price
63	12 x27	6	5	17 lbs.	\$4.87
64	13½x28	6	6	22 lbs.	5.62
74	13½x28	7	6	22 lbs.	6.37



Steel Drum Oven

This entire oven is made of sheet steel. Collars and ends are swedged together, which makes it absolutely smoke and gas tight. The best steel drum oven on the market.

Specifications and Prices

No	Outside	Oven	Weight	Price
14	18x14	18x10	17 lbs.	\$3.75

National Drum Oven

The neatest and best drum oven made. Cast ends of plain, new design and cast plate to protect inside oven from fire. Oven space one inch wider than any other drum oven on the market.



Specifications and Prices

No.	Outside	Oven	Weight	Price
81	18x14	18x11	28 lbs.	\$ 5.25
81—Castings and Rods Only			17 lbs.	3.37

National Fish House Stove

Made of heavy gauge metal with cast draft and cast grate. An ideal stove for heating fish houses during winter months. Has lift up feed door, and is equipped with three legs that bolt to bottom. Charcoal is the ideal fuel to use but will also burn cobs, chips and small wood.

Specifications and Prices

No.	Diameter	Height	Weight	Price
10	8½	18	9 lbs.	\$4.12



National Drum Heater Castings

National Drum Heater castings consist of front, front door, draft slide, collar, legs, bolts, drop handle for door and cooking plate allowing an ideal drum heater to be made from an old 30 or 55 gallon empty oil barrel. Especially adaptable for use by farmers, garagemen, campers, etc. Cooking plate measures 10x12 inches. We can furnish castings and bolts only. Six inch collar.



Specifications and Prices

National Drum Heater Castings Only (No Drum)

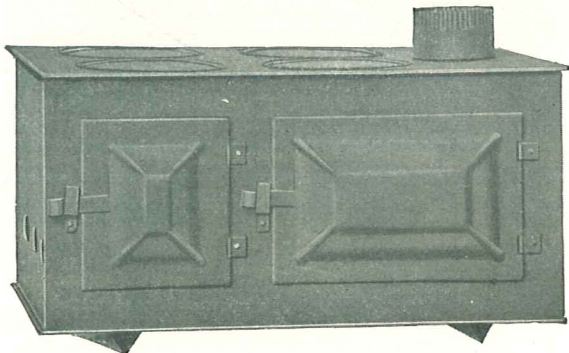
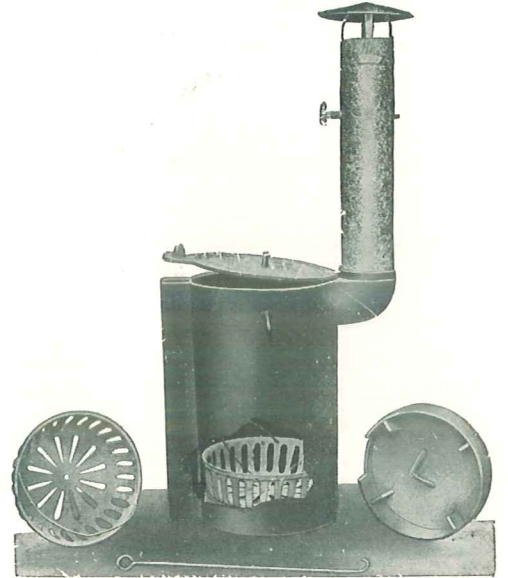
No.	Price
30—For use with 30 gallon Drum, Weight 25 lbs.	\$6.75
55—For use with 55 gallon Drum, Weight 27 lbs.	6.75

Excelsior Tank Heater

Made of one piece cast iron body, with cast grate, cast ash pan and cover, galvanized iron smoke pipe with damper and cap. Requires no fastenings in tank. Sinks of its own weight. The cast cover swings to admit draft in tube and closes thoroughly tight; will hold fire perfectly. Burns chips, cobs, wood or coal. Guaranteed not to leak.

Specifications and Prices

No.	Diameter	Height Body	Weight	Price
2	12	24	135 lbs.	\$11.25
4	14	24	165 lbs.	13.50
6	16	24	195 lbs.	16.87



S. U. Camp Stoves

Carefully made of heavy blue steel, for wood only. All joints double seamed and riveted. Stamped steel doors of attractive design. Stamped steel covers and oven rack. Heat circulates around entire oven. Will bake perfectly. Furnished complete with six feet of telescope pipe.

Specifications and Prices

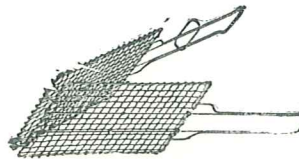
No.	Holes	Oven	Top	Height	Weight	Price
2	2	10x10	12x23	12	20 lbs.	\$6.37
4	4	10x15½	16x23	12	25 lbs.	7.12

Jiffy National

Made of heavy gauge rust-resisting Armco Iron with reinforced top and bottom. Burns charcoal, wood or cobs. Ideal for broiling steaks, roasts, chops, etc. Cast iron top grate. Furnished with or without broiler.

Specifications and Prices

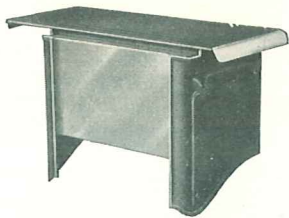
No.	Diameter	Height	Weight	Price
1 Less Broiler	8½	11	8 lbs.	\$2.47
2 With Broiler	8½	11	9 lbs.	3.30



Barbecue Broiler



NATIONAL FEATURES



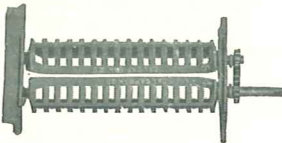
National Contact Reservoir

This is the best method for heating water in reservoir. It cannot interfere with the baking of oven, having no dampers, no condensation, no soot deposit, and heats by outside contact only.



National Porcupine Fireback

This fireback radiates heat into oven through "Direct" and "Pin" radiation and is found only in National Cooking Stoves and Ranges. That's why Nationals use less fuel than other makes.



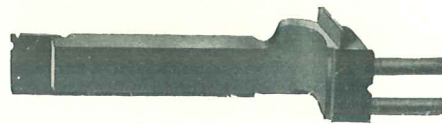
National Duplex Grate

Made without a grate frame. Has bar on each end to meet all requirements and insure perfection. By reversing sides either coal or wood can be used as fuel. The solid side makes a perfect wood burning grate and when in closed position reduces depth of fire box, so essential when burning wood. Lateral bars, the full length grate, prevent coal or clinkers from interfering with the ease in dumping grate while fire is burning.



National Key Plate

Bottom view of National Key Plate Center. With angle flange around all edges makes strong and durable plate. Covers and centers re-inforced with flanges as illustrated. These equalize expansion and prevent fire cracking.



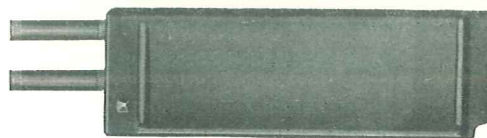
"L" Water Front

This is our "L" Water Front, made of cast iron. Takes place of front grate and rear end lining. Has an inside partition through center for perfect circulation of water.



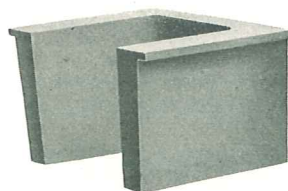
National Cast Water Front

Made extra strong with larger water channel. Tested to 100 pounds pressure.



National Cast Water Back

Heats greatest amount of water. Does not interfere with baking. Tested to 100 pounds pressure.



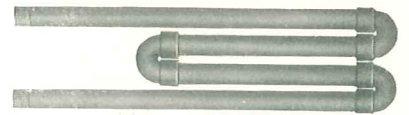
National Water "U"

Used in Hotel National. Occupies rear of fire box and both sides, occupying half of fire box space. Has web in center to promote perfect circulation of water. Fitted for 1 1/4-inch pipe.



National Two Pipe Water Coil

Lies against fire back. Cannot interfere with baking since it does not cover fire back. In use, it is covered with fire nearly all the time. Heats greater amount of water than a cast water back.



National Four Pipe Water Back Coil

Lies close against fire back. Not so close, however, as to prevent fire circulating back of coils. Consequently does not interfere with baking. Heats large amount of water very quickly.



National Iron Oven Rack

Strong and substantial. Offers no obstruction to free circulation of heat throughout the oven. Insures even baking, top and bottom.



Trade Mark

This trade mark carries the assurance that the product bearing it is manufactured by us, in our own modern factory, with the skill, intelligence and fidelity associated with our products and hence can be depended upon to possess in the highest degree the merit claimed for it. It has behind it, our guarantee concerning the purity, strength and durability of the materials entering its construction, and the accuracy and thoroughness with which each step of its manufacture has been conducted.

These are nearly all exclusive National Features and cannot be found in other Stoves and Ranges.

NATIONALS MAKE CHEERFUL AND COMFORTABLE HOMES

GENERAL INFORMATION

Prices and Terms

We invite correspondence with reference to prices and terms, and to dealers only will quote our best discount from list prices shown herein. These, in all cases, will be as low as any other manufacturer on similar goods, quality considered.

Our prices are subject to change without notice.

On C.O.D. Orders we require a deposit of one-half the amount of bill, or an agent's guarantee of charges both ways on the goods, together with Chicago exchange for one-fourth of the amount of order. Orders for \$5.00 and under must be accompanied with full amount of order.

We render statement of account to all customers from time to time, and our invoices must be, in all cases, paid when due. Interest is charged at legal rate after maturity on all accounts.

Payments must be made in funds which are par at Quincy. When remittance is draft, there will be an expense for collection and exchange, and enough must be added to cover the same, say thirty-five (35) cents for each one hundred dollars or fraction thereof. If remittance is by express, the charges must be prepaid.

Claims for errors must be made on receipt of goods, and will not be allowed unless made within ten days from date of invoice.

Freight and Breakage

Unless otherwise ordered, we make all shipments by buyer's risk under the releases demanded by transportation companies, thus obtaining the benefits of released rates of freight.

We do not insure safe delivery of goods—Our responsibility ceases when shipments are received for in good order by railroads, boats, trucks, express companies or other common carriers, all right and title thereto passing to customer at that time, but we are always glad to assist customers in collection of overcharges and claims for damage sustained.

If shipment is damaged in transit, obtain proper damage notation on paid expense bill, accept shipment and advise us fully concerning damage, enclosing paid freight bill containing agent's notation of bad order.

Concealed Damage—Should there be any damage of such a nature that it was not noted when shipment was accepted, or could not be detected until goods were unpacked, you should call the agent at once, have proper inspection made, and require him to give you a "Concealed" Bad Order Report, stating condition of goods when examined. Transportation company will not accept claims covering concealed Damage on inspection made after goods have been taken from their premises, unless your request for inspection is made to local agent within fifteen (15) days after receipt of goods. This request may be made in person or by phone, but must be confirmed by letter. If agent refuses to make inspection as requested, submit affidavit covering damage as noted by you, with other papers for filing claim.

Under no consideration return goods without first receiving our permission in writing. In making such requests, give us date of invoice and reason for returning. If your order was correctly filled and the goods are not defective in any manner, we shall be compelled to charge back all expense incidental to return of goods.

The above terms are based on principles of fairness, and according to general mercantile usage. They are not subject to abrogation or change by salesmen.

Care of Porcelain Enamel

Our porcelain enamel is thoroughly inspected and will give good service, but like all enamel is breakable and cannot be guaranteed.

This high grade porcelain enamel is like glass and must be handled carefully.

Careful inspection is made in the different processes of manufacture. Unimportant variations, such as a few pin holes, slight variations in color, minute scratches or lines, or small specks of foreign matter in the enamel, which cannot be entirely prevented, are not valid causes for rejection or for complaint.

Never wash porcelain while warm or hot. Cold water on hot or warm enamel causes crazing.

Remove any discoloration promptly, using soap and water or a good smooth cleaning powder. Never use cleaning powders containing grit, soda or acids.

Always remove the broiler pan from the broiler of combination Coal and Gas Ranges when not in use.

Leave oven door open for a few moments after lighting to avoid formation of moisture due to rapid heating of cold walls. After using the oven, leave oven door open until oven is cool.

Directions for Setting Up Stoves

Chimney—The first essential in setting up a range or cook stove is to examine the chimney and see that it has sufficient flue space and is of proper height. It is the chimney alone that furnishes the draft, and not the stove (as many suppose), and it must, therefore, be of good size and clear of all obstruction in order to furnish draft enough to operate stoves perfectly.

A new or green chimney will never have a perfect draft. It will not draw perfectly until it is thoroughly dry.

Pipe—Use as little pipe and as few elbows as possible. See that it fits tightly together, and into the chimney and onto the collar of the stove properly. See that it is not pushed into elbows or chimney too far.

Always have pipe and opening into chimney full size of collar on stove.

Do not set two stoves to same flue, or use a T-joint.

Stove—See that all the flues are open and clear.

See that the damper and flue stops are in place and closed tightly, being very sure that one back of the ash pan is tight.

Be sure you know how the dampers operate; that they may not be open when you think they are closed, and bear in mind that almost all stoves having reservoirs have two dampers, both of which must be properly turned to bake.

Directions for Operating

Cover oven top with ashes and fill reservoir before starting fire. Heat up slowly at first. Do not fill fire box above the top of the fire linings.

Shake grate often and keep free of cinders and ashes.

Do not let lower front door stand open. You get enough draft through the draft register.

In baking, keep the register in feed door closed. The air to go around oven should pass through the fire and become thoroughly heated.

Do not operate stove with damper down; you use too much fuel and burn stove out too fast.

Do not set leaky vessels or spill cold water on stove.

Be sure to empty ash pan at least once a day.

In cleaning out flues, be sure to scrape all sides of flues, and especially scrape off all soot that hangs to oven bottom. Pull all soot toward you, and be careful not to push any back into back flues, but scrape from extreme back forward.

Do not let reservoir covers stand open. Do not set a hot flatiron on the hearth or shelves.

If you use soft coal, have your coal dry and well broken. Do not put much fuel on fire at a time. Clean the flues out often, and scrape both top and bottom of flue.

If you use hard coal, always use range size. Fine coal will not do. Shake the grate often, and keep the clinkers and dead coals cleaned out of ends and corners of fire box. Keep the fire box filled up even with top of fire linings.

If you use wood, always use wood linings. Do not cut the wood too long. It should be dry and well seasoned. Green or wet wood gives about half the heat that seasoned wood does, and burns slowly.

If you have a "National", use LESS FUEL than you would with any other stove or range.

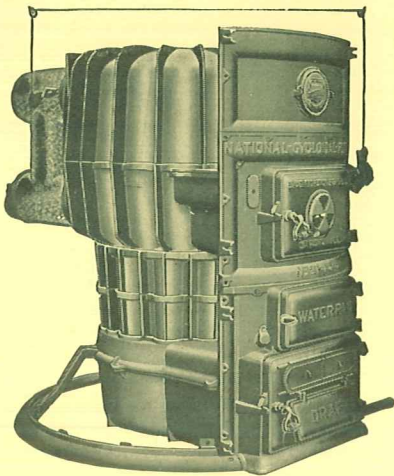
Our Guarantee

Our stoves will always work with four joints of pipe out of doors in the open air away from any buildings. Any stove that will operate under such a condition will work splendidly if properly put up to a good flue.

Never send back a stove complained of without first trying to correct the difficulty. If you cannot do so, write us and we shall be glad to offer suggestions.

PREFERRED BY EVERY HOUSEWIFE

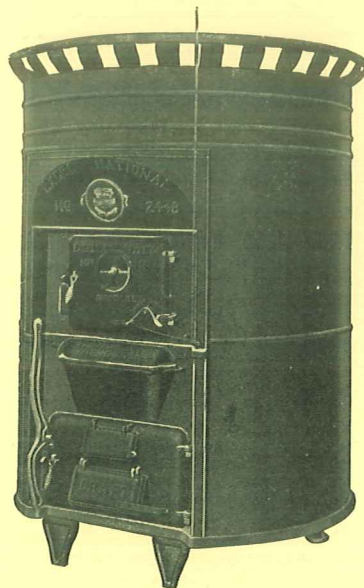
National Warm Air Furnaces and Room Heaters



Open View—Cycloidal National

We specialize in the manufacture of
National Warm Air Furnaces and
School Room Heaters.

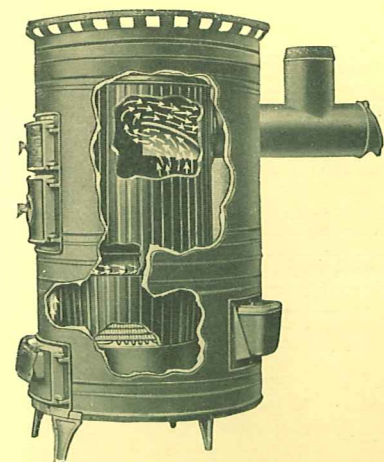
A complete line, modern
and up-to-the-minute
in every respect.



Excel National Room Heater

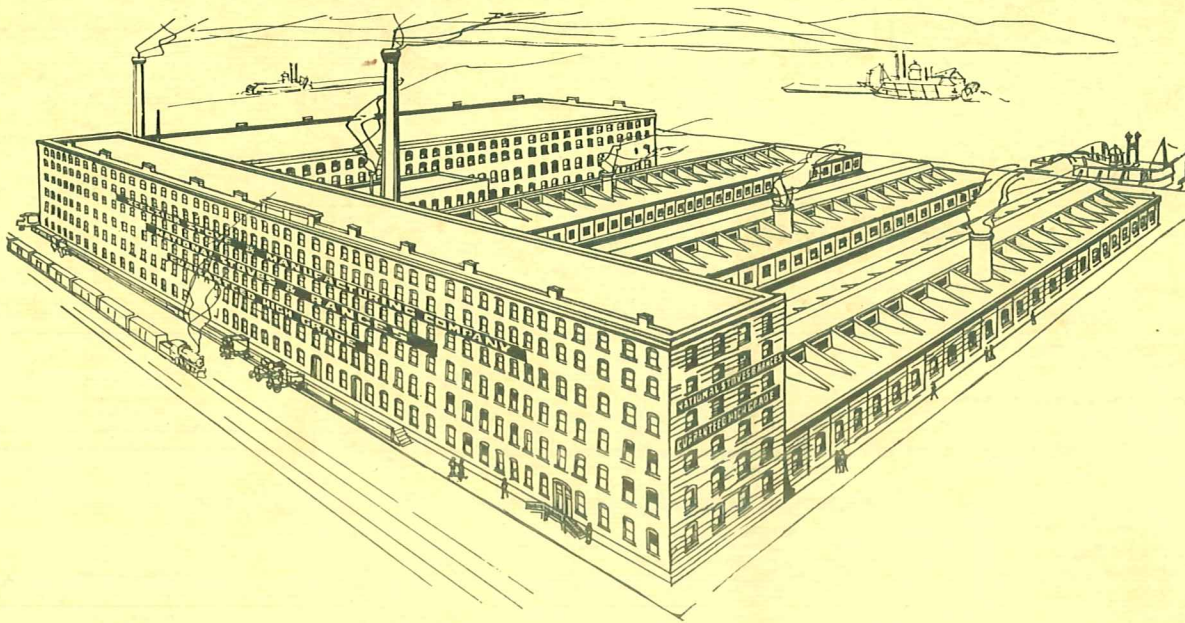
Self-cleaning. Economical. Labor and fuel-saving. Perfect in operation. Lowest in operating cost.

Our engineering department will, without cost, gladly assist with your heating problems, either on gravity or forced air systems. Write us freely.



Cutaway View—
National Room Heater

If Interested, Write for Catalogue



The Home Where
National Stoves, Ranges and Furnaces
Are Made



EXCELSIOR STOVE & MANUFACTURING CO.
QUINCY, ILLINOIS, U. S. A.