

CATALOGUE and  
PRICE LIST 1908

PARLOR CYLINDER  
LAUNDRY

..STOVES..

CAST IRON HEATERS, OIL  
HEATERS, BASKET GRATES,  
ANDIRONS, ETC.

TELEPHONE, RICHMOND 1800

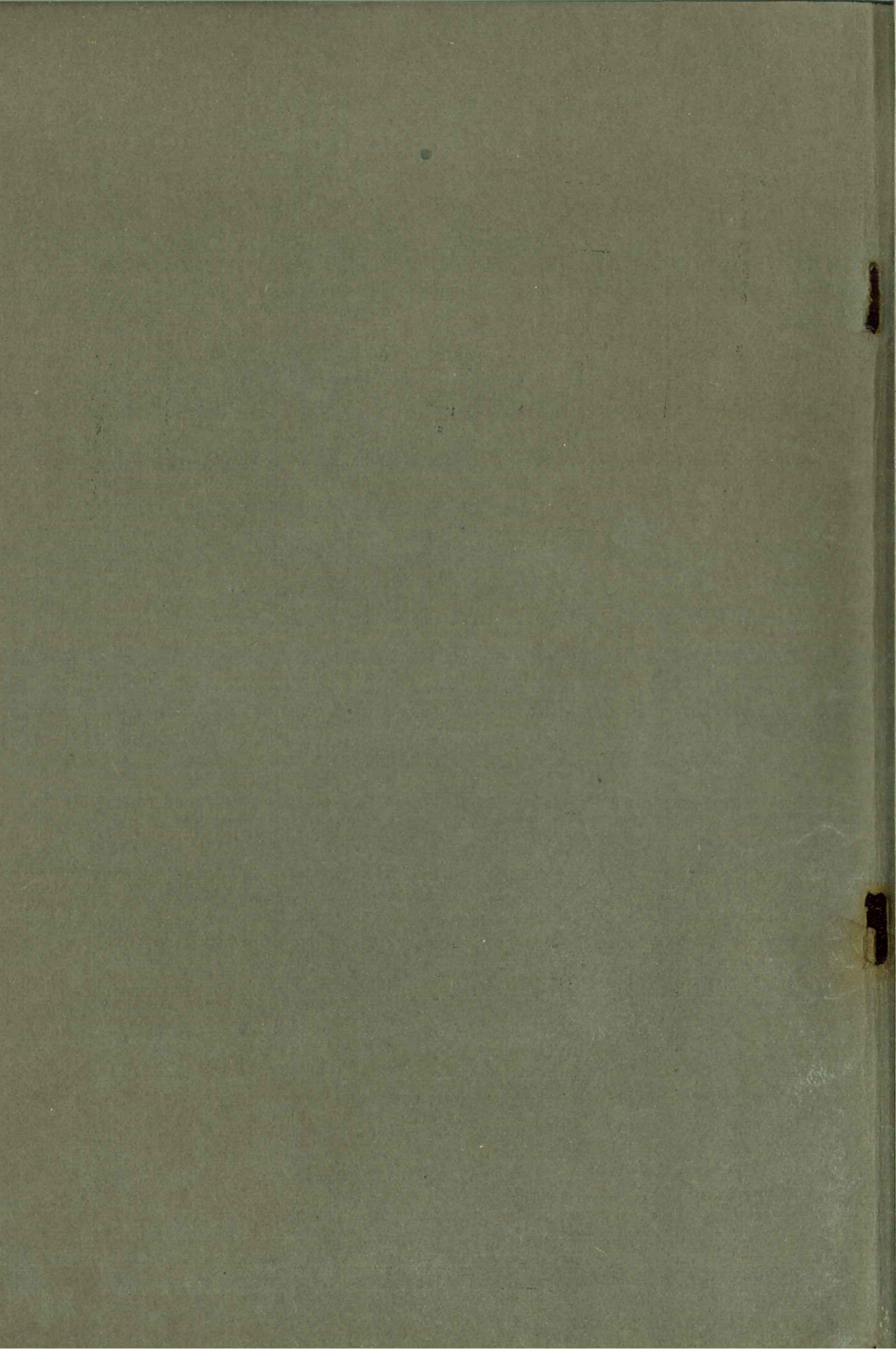
Private Branch Telephone Exchange Connecting all Offices

HENRY N. CLARK CO.

56 TO 62 UNION STREET

43 TO 49 FRIEND STREET

BOSTON, MASS.



CATALOGUE and  
PRICE LIST 1908

PARLOR CYLINDER  
LAUNDRY

.. STOVES ..

CAST IRON HEATERS, OIL  
HEATERS, BASKET GRATES,  
ANDIRONS, ETC.

TELEPHONE, RICHMOND 1800  
Private Branch Telephone Exchange Connecting all Offices

**HENRY N. CLARK CO.**

56 TO 62 UNION STREET  
43 TO 49 FRIEND STREET  
BOSTON, MASS.

# To The Trade

*We take pleasure in presenting you  
with our annual catalogue of . . . .*

## PARLOR AND HEATING STOVES

*Our Line for the coming season  
includes a **Large variety** of stoves  
that will surely be sellers, and which  
you should see and secure the agency  
for before buying others. . . We have  
a very large stock of all the different  
grades of stoves, and shall be able  
to fill your orders promptly and at  
reasonable prices. . . . We thank  
you for past favors, and solicit a  
continuance of your patronage.*

HENRY N. CLARK COMPANY

HENRY N. CLARK, President  
GEORGE E. HUNT, Treasurer

Boston, August 1, 1908

REGAL  
OAK

1908 Pattern  
Latest Design



SIZES

LIST PRICES  
With back pipe.

No. 14.	With 12-inch Fire-Pot . . . . .	\$21.11
No. 16.	With 14-inch Fire-Pot . . . . .	25.11
No. 18.	With 16-inch Fire-Pot . . . . .	29.74

**T**HIS stove has been greatly improved for 1908. It is made with a *divided back pipe* or without. It has all of the latest improvements, and is a first-class stove in every respect. A New England made stove.

WRITE FOR TRADE DISCOUNT

CENTURY  
OAK

1908 Pattern  
Full Nickered and  
Return Flue  
Attachment



On Nickel Plated or Black Base

SIZES	List Prices
No. 12. With 11-inch Fire-pot with Nickel Base . . . . .	\$16.80
No. 14. With 13-inch Fire-Pot with Nickel Base . . . . .	18.90
No. 16. With 15-inch Fire-Pot with Nickel Base . . . . .	22.00
For above on Black Bases deduct from list . . . . .	.76
No. 18. With 17-inch Fire-Pot with Black Base . . . . .	29.00
No. 20. With 19-inch Fire-Pot with Black Base . . . . .	35.00
Return flue attachment extra Nos. 12, 14 and 16, \$3.15; Nos. 18 and 20, \$4.00.	
Cast Iron Linings extra No. 12, \$1.90; No. 14, \$2.10; No. 16, \$2.65; No. 18, \$4.50; No. 20, \$5.50.	
Extension Tops extra Nos. 18 and 20, \$4.00.	

**T**HE best Oak stove for the money in the market. It is of the very latest design, with full nickel trimmings, smoke collar on the back, and has all of the latest improvements. One of the best and most stylish stoves on the market for the price.

WRITE FOR TRADE DISCOUNT

NOVEL  
ECLIPSE  
OAK



SIZES

List Prices

No. 12.	With 12-inch Fire-Pot . . . . .	\$17.93
No. 14.	With 14-inch Fire-Pot . . . . .	20.84
No. 16.	With 16-inch Fire-Pot . . . . .	24.31
No. 18.	With 18-inch Fire-Pot . . . . .	27.78

**N**ICKEL trimmings consist of urn, top ring, name plate, and rails. This stove has screw draft, draw-center grate, and smoke collar on both top and back. A first-class stove at a medium price.

WRITE FOR TRADE DISCOUNT

UNA  
ECLIPSE  
OAK

1908 Pattern



	SIZES	List Prices
No. 11.	With 10-inch Fire-Pot . . . . .	\$12.15
No. 13.	With 12-inch Fire-Pot . . . . .	15 04
No. 15.	With 14-inch Fire-Pot . . . . .	17.35

**A** LOW-PRICED Oak, but a better stove — better materials and better mounted and trimmed than the usual cheap Oak. Good cold-rolled uniform color steel body, protected joint at fire-pot, tight base. Lever turn keys, nicely nicked, well proportioned, furnished with ash pan.

WRITE FOR TRADE DISCOUNT



RUBY  
OAK

1908 Pattern



SIZES		List Prices
No. 11.	With 10-inch Fire-Pot . . . . .	\$ 9.30
No. 13.	With 12-inch Fire-Pot . . . . .	12.08
No. 15.	With 14-inch Fire-Pot . . . . .	14.80
No. 17.	With 16-inch Fire-Pot . . . . .	18.42
No. 19.	With 18-inch Fire-Pot . . . . .	20.00

**T**HE above is a NEW STOVE of the very latest design and is sold at a very low price. All sizes have *draw center grate* and the *smoke pipe collar on the back*. The *draft and check registers* operate on screws and each stove has an *ash pan*. They are *nicely nicked* and very fine stoves for the price.

WRITE FOR TRADE DISCOUNT

IDEAL  
OAK



SIZES		List Prices
No. 130.	With 12-inch Fire-Pot. . . . .	\$12.73
No. 150.	With 14-inch Fire-Pot. . . . .	15.62
No. 170.	With 16-inch Fire-Pot. . . . .	19.66
No. 190.	With 18-inch Fire-Pot. . . . .	24.31
No. 210	With 20-inch Fire-Pot. . . . .	30.09

**T**HIS is an entirely new production, designed by us with the purpose of giving the most value in an Oak stove for the least money. Try it and be convinced.

The design is handsome, the carving is very rich and heavy, the nickel plating is very brilliant. All sizes have shaking draw-center grate, also a smoke collar on back.

The Fire-Pot is of good capacity in each size of the stove. The ash pit is also roomy. Each stove has an ash pan. The draft and check registers operate on screws. There is a cover hole in the top of each stove. The name plate, foot rails, top edges, swinging cover, urn, and screw draft handles are handsomely nickel plated.

WRITE FOR TRADE DISCOUNT

**BEST  
OAK**

1908 Pattern



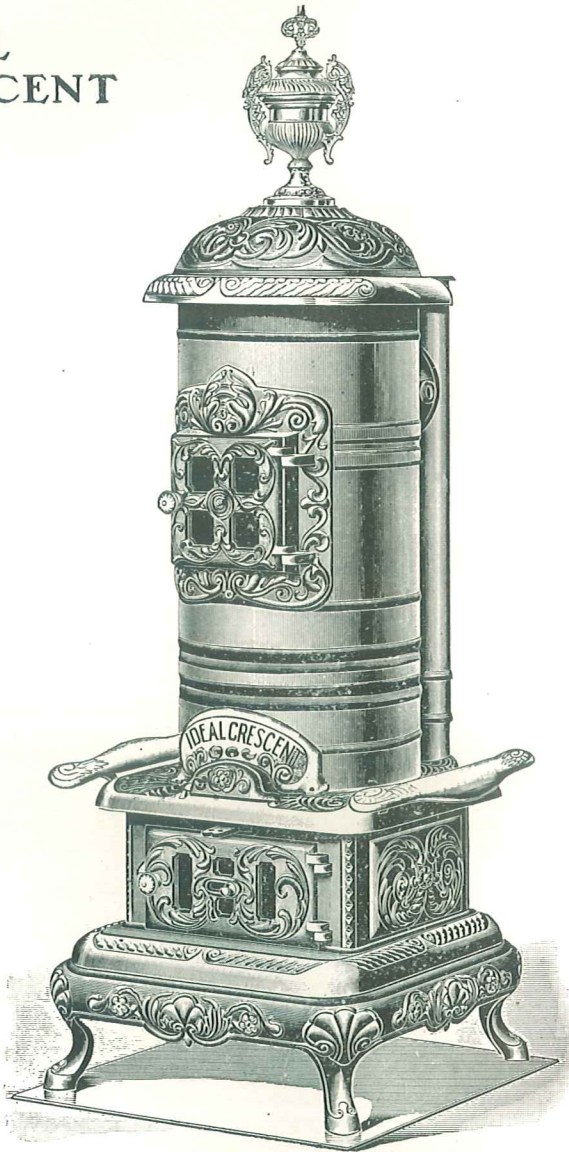
SIZES		List Prices
No. 9.	With 8-inch Fire-Pot . . . . .	\$ 6.94
No. 11.	With 10-inch Fire-Pot . . . . .	8.80
No. 13.	With 12-inch Fire-Pot . . . . .	11.30
No. 15.	With 14-inch Fire-Pot . . . . .	13.91
No. 17.	With 16-inch Fire-Pot . . . . .	16.80

**T**HIS stove is a new up-to-date low priced Oak. It is nicely made and full nick-  
eled. The price is *very low* and it can be sold at the price of the ordinary  
Cylinder stove. Has a smoke collar on back.

WRITE FOR TRADE DISCOUNT

IDEAL  
CRESCENT

Return  
Flues  
With Oven



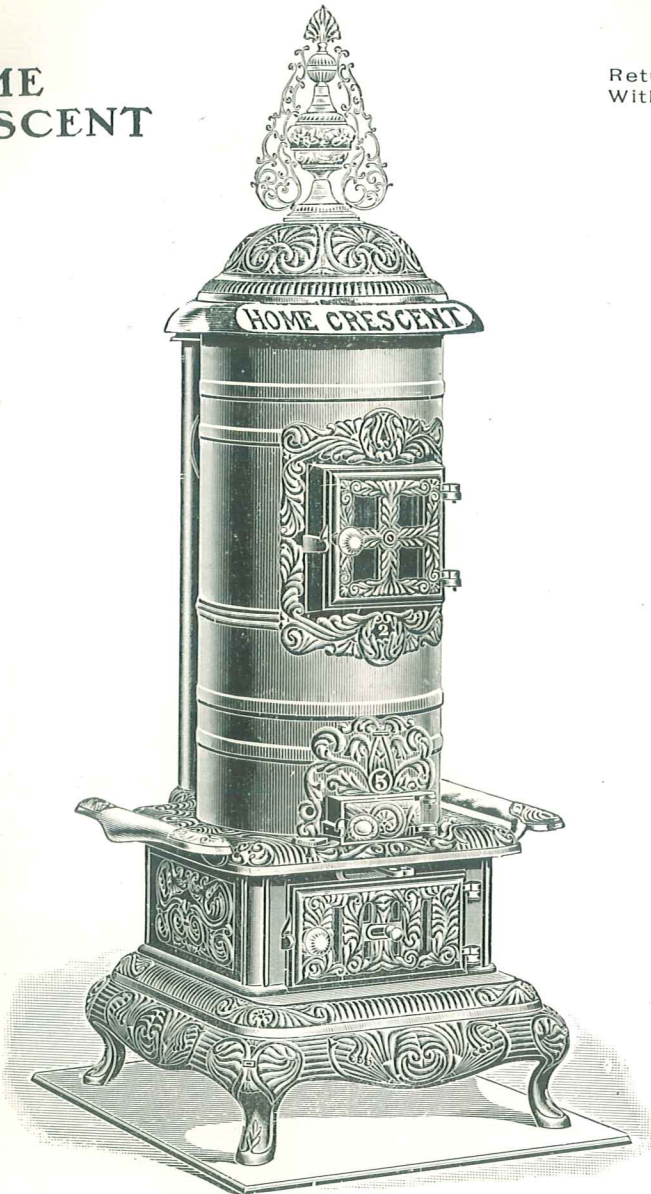
SIZES		List Prices
No. 2.	With 10-inch Fire-Pot . . . . .	\$27 36
No. 3.	With 12-inch Fire-Pot . . . . .	31 57
No. 4.	With 14-inch Fire-Pot . . . . .	35 79

**W**ITH base nickel foot rails, top rim, and name plate. This is a first-class parlor stove, and is warranted in every respect.

WRITE FOR TRADE DISCOUNT

HOME  
CRESCENT

Return Flue  
With Oven



SIZES

	List Prices
No. 4. With 10-inch Fire-Pot . . . . .	\$25.51
No. 5. With 12-inch Fire-Pot . . . . .	30.21
No. 6. With 14-inch Fire-Pot . . . . .	35.30

**T**HIS is a first-class return flue stove, with base, nickel rails, and large oven. Full nickel trimmed.

WRITE FOR TRADE DISCOUNT

# LENOX PARLOR

	SIZES	List Prices
No. 9.	With 9-inch Cylinder . .	\$17.35
No. 10.	With 10-inch Cylinder . .	18.51
No. 11.	With 11-inch Cylinder . .	20.48
No. 12.	With 12-inch Cylinder . .	22.00
No. 14.	With 14-inch Cylinder . .	26.62
No. 16.	With 16-inch Cylinder . .	30.08



**N**ICKEL, trimmings consist of urn, top ring, name plate, and rails. The above stove has a divided back pipe, and is mounted with a beautiful embossed planished iron body. It has a draw-center grate, anticlinker door, and check draft in feed door.

WRITE FOR TRADE DISCOUNT

CUTE  
PARLOR

	SIZES	List Prices
No. 9.	With 9-inch Cylinder,	\$12.15
No. 10.	With 10-inch Cylinder,	13.89
No. 11.	With 11-inch Cylinder,	15.04
No. 12.	With 12-inch Cylinder,	16.78
No. 14.	With 14-inch Cylinder,	20.48
No. 16.	With 16-inch Cylinder,	24.31



**N**ICKEL trimmings consist of urn, top ring, name plate, and rails. The above stove is mounted with a beautiful embossed planished iron body, has draw-center grate, anticlinker door, and check draft in feed door.

WRITE FOR TRADE DISCOUNT

OUR  
LEADER  
PARLOR

Mounted with  
Polished Steel  
Divided Back Pipe



SIZES		List Prices
No. 10.	With 10-inch Cylinder . . . . .	\$16.20
No. 11.	With 11-inch Cylinder . . . . .	17.35
No. 12.	With 12-inch Cylinder . . . . .	18.51
No. 14.	With 14-inch Cylinder . . . . .	23.16
No. 16.	With 16-inch Cylinder . . . . .	27.78

**T**HE above is a *first-class* stove, with divided back pipe and base, nickel rails and top rim. It has a draw-center grate, anticlinker door, and ash pan.

WRITE FOR TRADE DISCOUNT



**THE  
LEADER  
PARLOR**

Mounted with  
Polished Steel  
Direct Draft



SIZES

List Prices

No. 9.	With 9-inch Cylinder . . . . .	\$10.42
No. 10.	With 10-inch Cylinder . . . . .	11.58
No. 11.	With 11-inch Cylinder . . . . .	13.31
No. 12.	With 12-inch Cylinder . . . . .	15.04
No. 14.	With 14-inch Cylinder . . . . .	18.51
No. 16.	With 16-inch Cylinder . . . . .	23.16

**T**HE above is a low priced stove, with nickel rails, top rim, and name plate. It has a draw-center grate, anticlinker door, and ash pan.

WRITE FOR TRADE DISCOUNT

**LEADER  
CYLINDER**

Mounted with  
Refined Iron



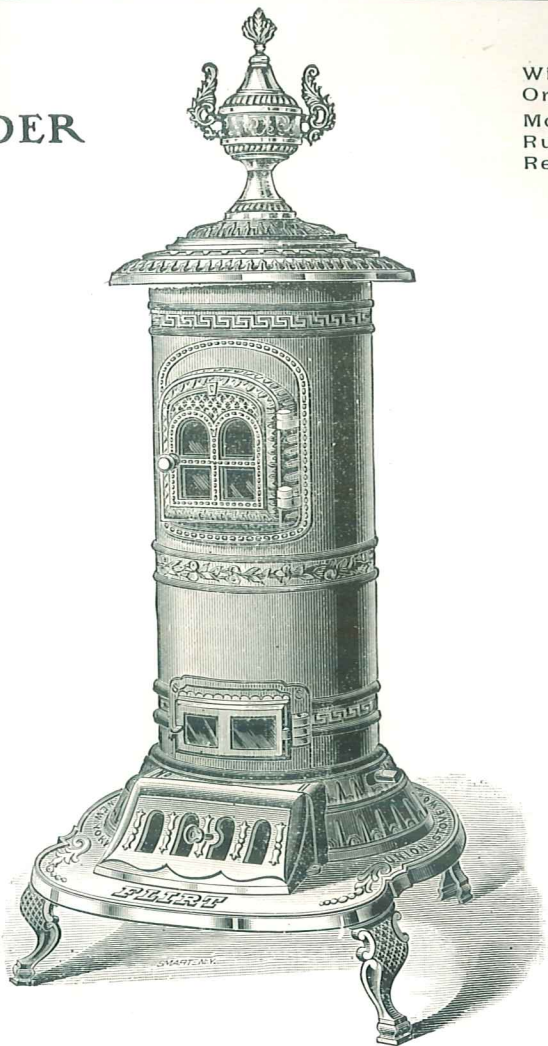
SIZES		List Prices
No. 8.	With 8-inch Fire-Pot . . . . .	\$ 7.53
No. 9.	With 9-inch Fire-Pot . . . . .	8.69
No. 10.	With 10-inch Fire-Pot . . . . .	9.84
No. 11.	With 11-inch Fire-Pot . . . . .	11.58
No. 12.	With 12-inch Fire-Pot . . . . .	13.31
No. 14.	With 14-inch Fire-Pot . . . . .	17.35
No. 16.	With 16-inch Fire-Pot . . . . .	20.84

**T**HE above represents a very low-priced Cylinder stove, with ash pan. It has a draw-center grate, anticlinker door, etc.

WRITE FOR TRADE DISCOUNT

**FLIRT  
CYLINDER**

With Nickel  
Ornament  
Mounted with  
Russia or  
Refined Iron



SIZES			LIST PRICES	
			Russia Iron	Refined Iron
No. 8.	With 8-inch	Fire-Pot . . . . .	\$ 7.86	\$ 6.02
No. 9.	With 9-inch	Fire-Pot . . . . .	9.02	7.28
No. 10.	With 10-inch	Fire-Pot . . . . .	10.42	9.02
No. 11.	With 11-inch	Fire-Pot . . . . .	12.50	10.88
No. 12.	With 12-inch	Fire-Pot . . . . .	14.46	12.15
No. 14.	With 14-inch	Fire-Pot . . . . .	19.44	16.84
No. 16.	With 16-inch	Fire-Pot . . . . .	23.16	
			Russia Iron	
No. 14.	With 14-inch	Fire-Pot—Double (1½ sheet body) . . . . .		\$21.93
No. 16.	With 16-inch	Fire-Pot—Double (1½ sheet body) . . . . .		25.60

**T**HE best and cheapest Cylinder stove in the market with ash pan. We guarantee our prices on this stove against any stove of equal quality in the market.

WRITE FOR TRADE DISCOUNT

**KIT  
CYLINDER**

Mounted with  
Refined Iron



SIZES		List Prices
No. 8.	With 8-inch Fire-Pot . . . . .	\$5.44
No. 9.	With 9-inch Fire-Pot . . . . .	6.36
No. 10.	With 10-inch Fire-Pot . . . . .	8.11
No. 11.	With 11-inch Fire-Pot . . . . .	9.84

**T**HE above is a new, low-priced Cylinder stove.

WRITE FOR TRADE DISCOUNT

**PRIZE  
ECLIPSE**  
WOOD

Air Tight  
Cast-Iron Lined  
Mounted with  
Heavy Polished  
Steel Body



	SIZES	List Prices
No. 18.	Takes 18-inch wood . . . . .	\$12.15
No. 20.	Takes 20-inch wood . . . . .	13.89
No. 22.	Takes 22-inch wood . . . . .	15.62
No. 24.	Takes 24-inch wood . . . . .	18.28
No. 26.	Takes 26-inch wood . . . . .	21.64

**T**HE above stove has cast inside sectional linings 12 inches high, nickel swing top and foot rails, also swing smoke guard, spring slide knob, and large fire-door opening. A first-class, medium-priced Air Tight.

WRITE FOR TRADE DISCOUNT

PEARL  
WOOD

Air Tight  
New Pattern



SIZES		Castings	LIST PRICES	
			Mounted with Russia Iron	Mounted with Refined Iron
No. 00.	With Hinge Top . . . . .	\$ 4.86	\$ 8.11	\$ 7.24
No. 0.	With Hinge Top . . . . .	6.93	10.42	9.60
No. 1.	With Hinge Top . . . . .	8.11	12.73	11.58
No. 2.	With Hinge Top . . . . .	11.00	15.62	13.89

THE above is a very heavy, first-class stove. Nickel urns furnished with all stoves.

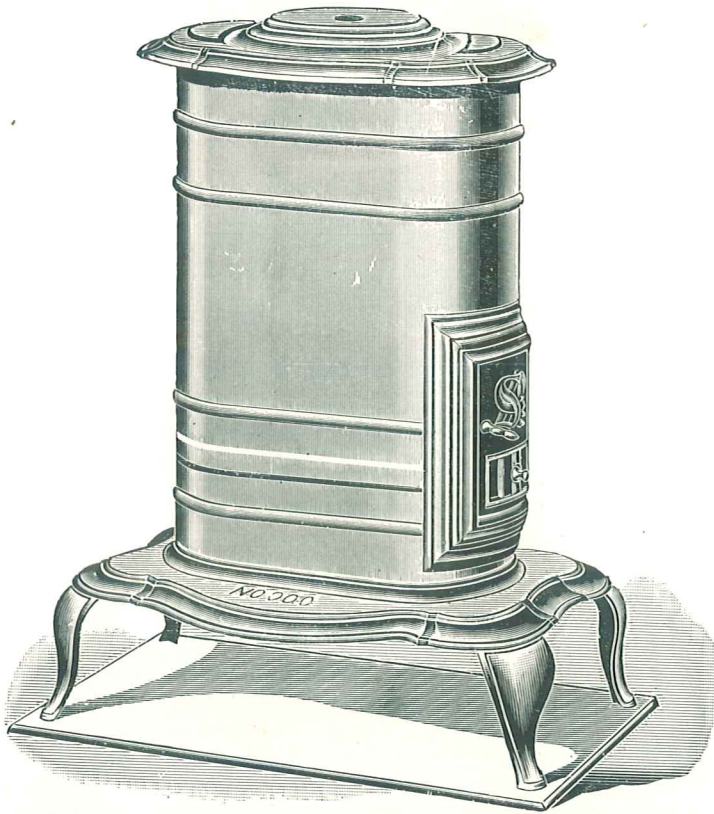
WRITE FOR TRADE DISCOUNT

HENRY N. CLARK COMPANY CATALOGUE AND PRICE-LIST

---

**PEARL**  
WOOD

Air Tight



		LIST PRICES	
SIZES		Castings	Mounted with Refined Iron
No. 000.	With close Top . . . . .	\$3.46	\$5.78

---

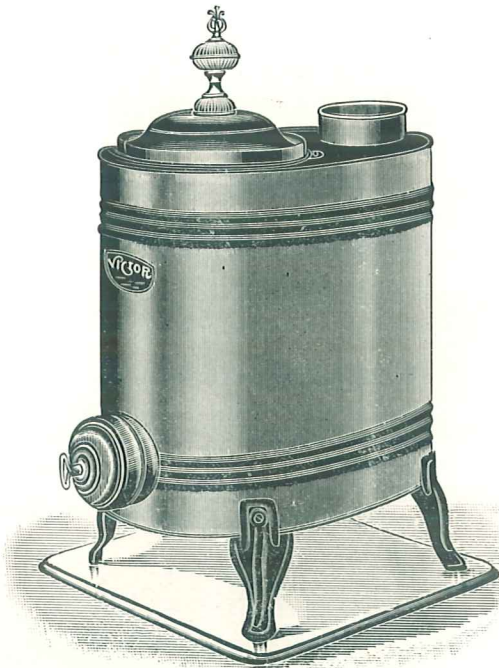
**T**HE above is a cheap stove for small rooms, etc.

---

WRITE FOR TRADE DISCOUNT

**VICTOR**  
WOOD

Air Tight  
Style Victor  
Made of Smooth Steel



SIZES		List Prices
No. 016.	Unlined; length 16 inches . . . . .	\$1.89
No. 018.	Unlined; length 18 inches . . . . .	2.10
No. 18.	Lined; length 18 inches . . . . .	2.42
No. 22.	Lined; length 22 inches . . . . .	3.68
No. 26.	Lined; length 26 inches . . . . .	4.73

**T**HIS stove has hot blast screw draft with spark arrester which can be removed to take out ashes, also seamless hinged cover and nickel urn. The Nos. 016, 018, and 18 are packed two (2) in a crate and have steel legs. The other sizes are crated singly and have cast legs. A first-class Heater at a low price.

WRITE FOR TRADE DISCOUNT



SOMERS-  
WORTH  
RIVAL

Wood  
Cottage



SIZES

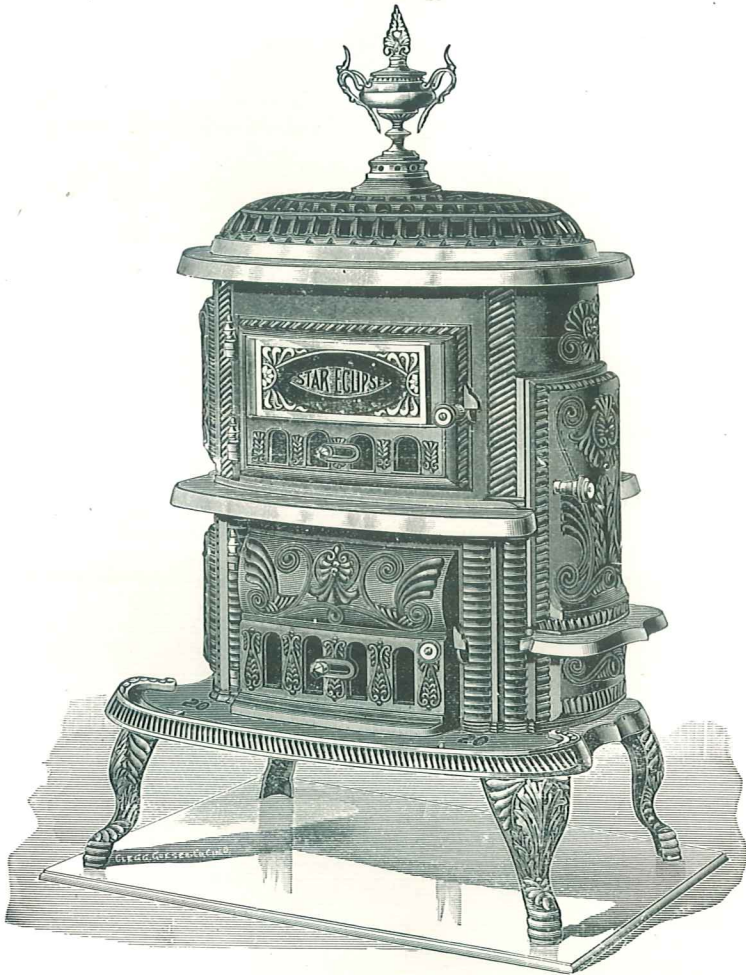
- |        |                              |         |
|--------|------------------------------|---------|
| No. 1. | Takes 20-inch wood . . . . . | \$18.51 |
| No. 2. | Takes 24-inch wood . . . . . | 21.42   |

LIST PRICES  
Mounted with Russia Iron

**T**HIS is the best Wood Cottage in the market. It has a swing top, with swing cover and center; underneath an extra large feed door, nickel rail, etc.

WRITE FOR TRADE DISCOUNT

STAR ECLIPSE  
COTTAGE PARLOR  
WOOD



SIZES

		List Prices
No. 21.	21-inch wood . . . . .	\$13 89
No. 23.	23-inch wood . . . . .	16.20
No. 25.	25-inch wood . . . . .	18.51

**A** FIRST-CLASS *all cast* Cottage Parlor at a *low price*.

WRITE FOR TRADE DISCOUNT

**FIRE KING**  
WOOD  
BOX



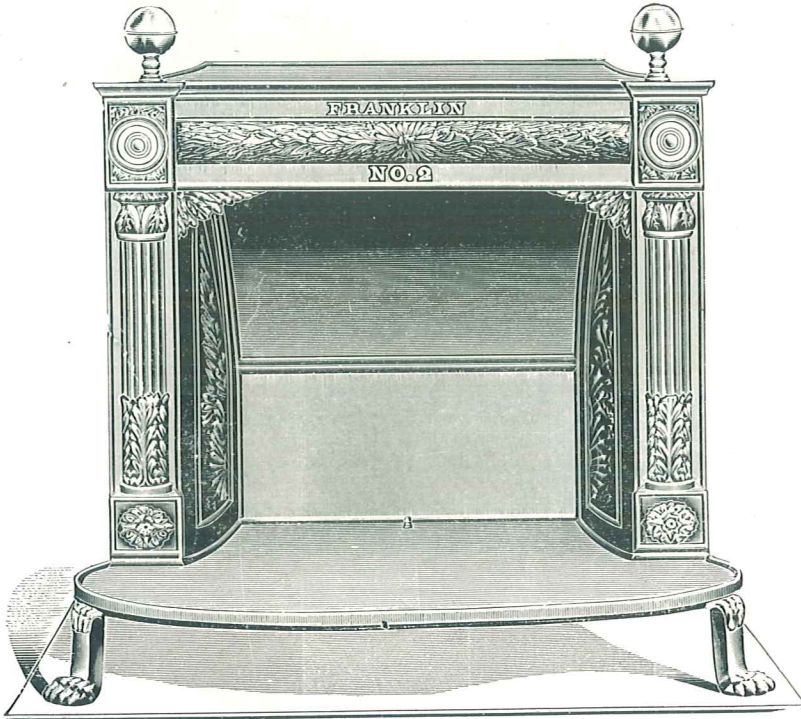
SIZES		List Prices
No. 18.	Takes 18-inch wood . . . . .	\$ 6.36
No. 22.	Takes 22-inch wood . . . . .	8.69
No. 25.	Takes 25-inch wood . . . . .	9.84
No. 28.	Takes 28-inch wood . . . . .	11.58
No. 30.	Takes 30-inch wood . . . . .	12.15
No. 34.	Takes 34-inch wood . . . . .	16.20
No. 36.	Takes 36-inch wood . . . . .	18.51

**T**HIS is one of the very latest patterns of Wood Box stoves. It is made with a swing top, with covers, swing hearth, and a large front door. The price is very low for a first-class stove.

WRITE FOR TRADE DISCOUNT

**ANTIQUE  
FRANKLIN**

Wood Franklin  
Stove



One Size Only

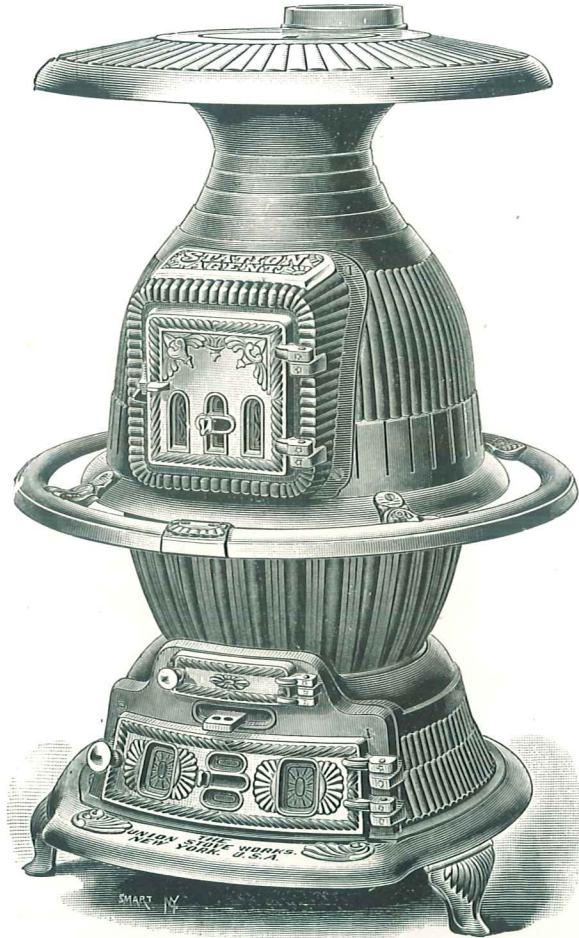
	List Prices
No. 2. Japanned . . . . .	\$30.08
Basket Grate for Coal (20-inch Chair) . . . . .	3.15

**T**HIS stove has a front opening 24 x 20 inches. The hearth is 24 inches deep. Pipe collar 14½ x 2½ oval, 26 inches from floor. It is fitted with two 3-inch brass balls on front corners, and two brass tiles, which add much to its beauty.

WRITE FOR TRADE DISCOUNT

STATION  
AGENT

Extra Heavy  
Cast-Iron Heater  
with Ash Pan



SIZES		List Prices
No. 20.	With 16-inch Fire-Pot . . . . .	\$30.08
No. 22.	With 18-inch Fire-Pot . . . . .	34.74
No. 24.	With 20-inch Fire-Pot . . . . .	41.66

**T**HIS is a brand new stove, with draw-center grate and anticlinker attachment, and is specially constructed for stores, halls, saloons, and places that require a large amount of heat. It is a very powerful heater.

WRITE FOR TRADE DISCOUNT

**MONICA  
CAST-IRON  
HEATER**

For Any Kind  
of Coal



SIZES		List Prices
No. 13.	Diameter of Fire-Pot, 13 inches . . . . .	\$19.51
No. 15.	Diameter of Fire-Pot, 15 inches . . . . .	23.00
No. 17.	Diameter of Fire-Pot, 17 inches . . . . .	28.78
No. 20.	Diameter of Fire-Pot, 20 inches . . . . .	38.04

**T**HE above represents a large, powerful cast-iron heater, suitable for stores, work shops, etc.

---

WRITE FOR TRADE DISCOUNT

**ASTOR GEM  
CAST-IRON  
HEATER**

For Any Kind  
of Coal



SIZES

List Prices

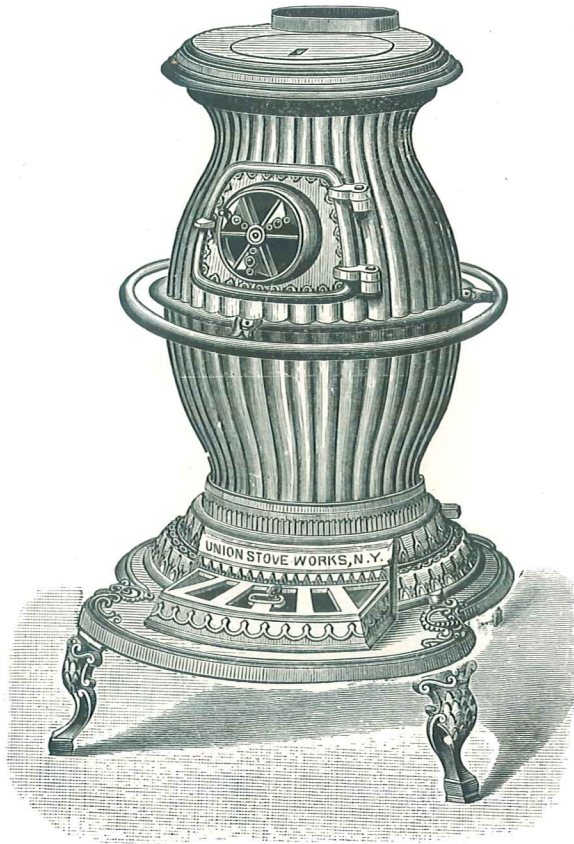
No. 35.	Diameter of Fire-Pot, 13 inches . . . . .	\$18.51
No. 45.	Diameter of Fire-Pot, 15 inches . . . . .	20.84
No. 55.	Diameter of Fire-Pot, 17 inches . . . . .	24.64
No. 65.	Diameter of Fire-Pot, 19 inches . . . . .	29.51

**T**HE above is a first-class cast-iron heater. It is very ornamental and is suitable for any place where a powerful heater is needed. It has a draw-center grate, nickel rails, etc.

WRITE FOR TRADE DISCOUNT

**RED  
CLOUD  
HEATER**

For any  
Kind of Coal



SIZES		List Prices
No. 9.	Diameter of Fire-Pot, 11 inches . . . . .	\$10.76
No. 10.	Diameter of Fire-Pot, 11¾ inches . . . . .	12.38
No. 11.	Diameter of Fire-Pot, 13 inches . . . . .	14.46
No. 12.	Diameter of Fire-Pot, 14¼ inches . . . . .	16.78
No. 14.	Diameter of Fire-Pot, 16¾ inches . . . . .	21.64
No. 16.	Diameter of Fire-Pot, 18½ inches . . . . .	23.73
No. 18.	Diameter of Fire-Pot, 21 inches . . . . .	32.63

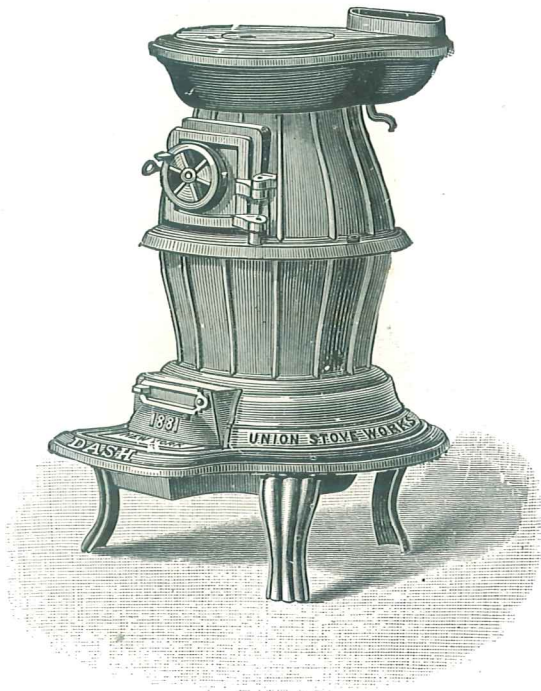
**T**HIS stove has a boiler top, a shaking and dumping grate, and is the best cast-iron heater in the market for use in shops, vessels, railroad stations, etc.

WRITE FOR TRADE DISCOUNT



**DASH  
HEATER**

For any  
Kind of Coal



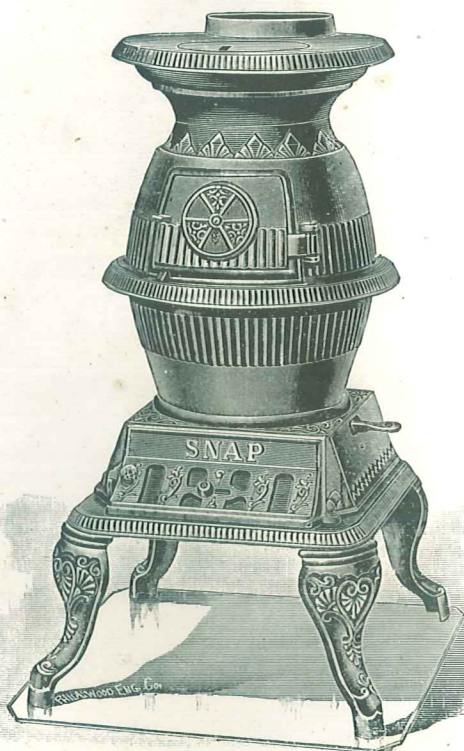
SIZES		List Prices
No. 2.	Diameter of Fire-Pot, 8 inches . . . . .	\$6.02
No. 3.	Diameter of Fire-Pot, 8½ inches . . . . .	6 36
No. 4.	Diameter of Fire-Pot, 9½ inches . . . . .	7.18
No. 5.	Diameter of Fire-Pot, 10½ inches . . . . .	8.33
No. 6.	Diameter of Fire-Pot, 11¼ inches . . . . .	9.96

**A** SMALL cast-iron Heater, for use in small shops, cabins, etc.

WRITE FOR TRADE DISCOUNT

# SNAP HEATER

For Any Kind  
of Coal



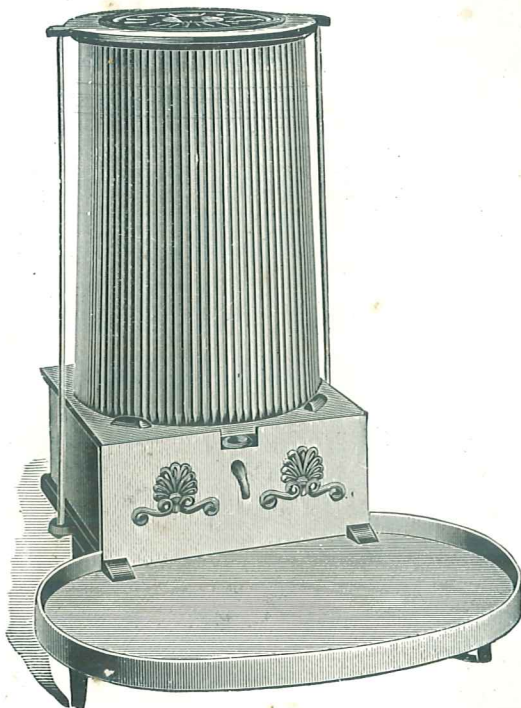
SIZES		List Prices
No. 3.	Diameter of Fire-Pot, 9 inches . . . . .	\$ 4.86
No. 4.	Diameter of Fire-Pot, 10 inches . . . . .	6.08
No. 5.	Diameter of Fire-Pot, 11 inches . . . . .	7.30
No. 6.	Diameter of Fire-Pot, 12 inches . . . . .	8.54
No. 7.	Diameter of Fire-Pot, 13 inches . . . . .	10.35

**T**HE above is a modern Globe stove at a low price. It is suitable for small stores, shops, etc. Has shaking and dumping grate.

WRITE FOR TRADE DISCOUNT

# CYLINDER STOVES

Cast Iron



**PLAIN**

	Approximate Weight	Diameter of Fire-Pot	Height of stove
No. 1.	40 lbs.	7 inches	19 inches
No. 2.	55 lbs.	8 inches	20 inches
No. 3.	80 lbs.	9 inches	23 inches
No. 4.	115 lbs.	11 inches	27 inches
	Price per lb. . . . .		

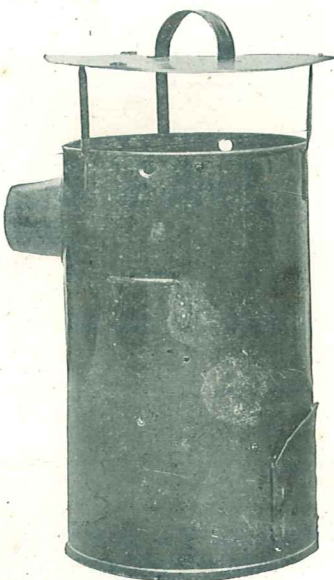
We have the above with both Shaking and dumping Grates.

---

WRITE FOR TRADE DISCOUNT

# SALAMANDER STOVE

Used for  
Drying Purposes



List price . . . . . \$8.33

---

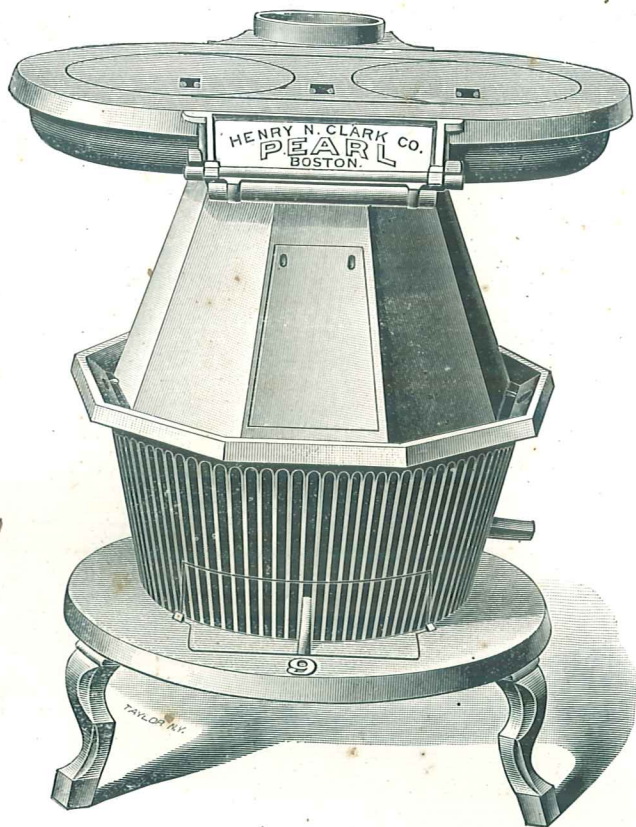
**N**O. 16 is 16 inches in diameter, has lift-off cover, heavy grate and bed, brick-lined pot.

---

WRITE FOR TRADE DISCOUNT

# PEARL LAUNDRY

Heating Capacity  
9 Irons



List Price . . . . . \$10.98

---

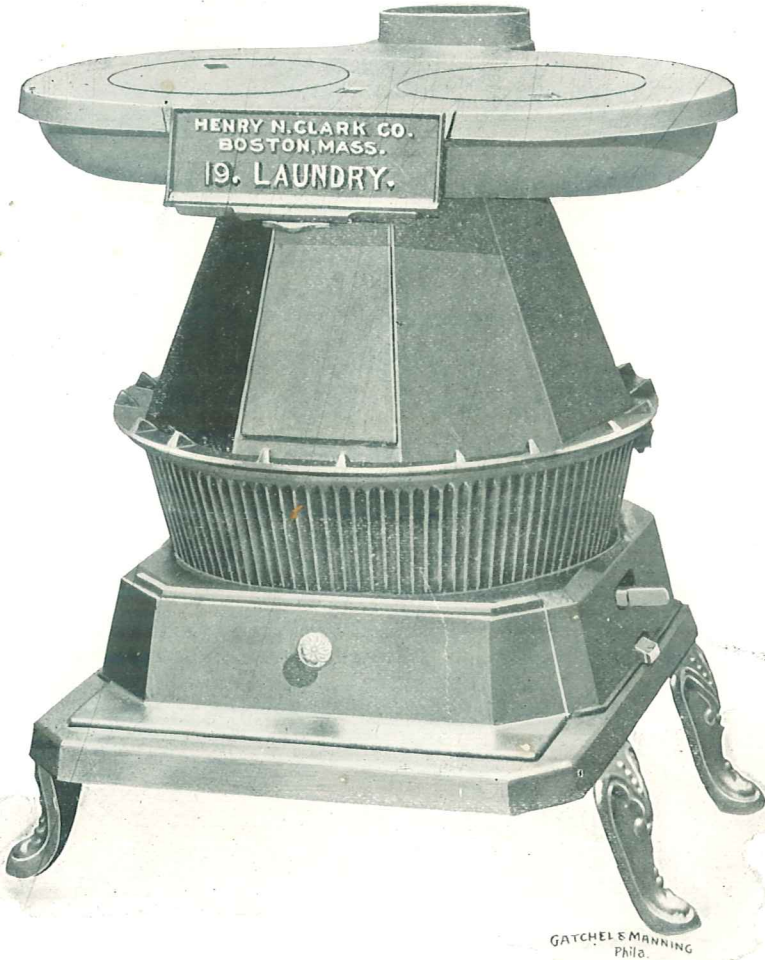
**T**HE best features of similar stoves will be found combined in the Pearl, making it most desirable for family use; especially adapted for use by Chinese laundrymen. It has a deep bowl above the cone affording a free draft, and the top plate of bowl is loose and can be removed to clean it. It has two eight-inch boiler holes, turnover grate operated from the side, deep ash pit; the castings are smooth, and the stove well bricked.

---

WRITE FOR TRADE DISCOUNT

# PHILADELPHIA LAUNDRY

No. 19  
With Shaking and  
Dumping Grate



No. 19 . . . . . \$9.82

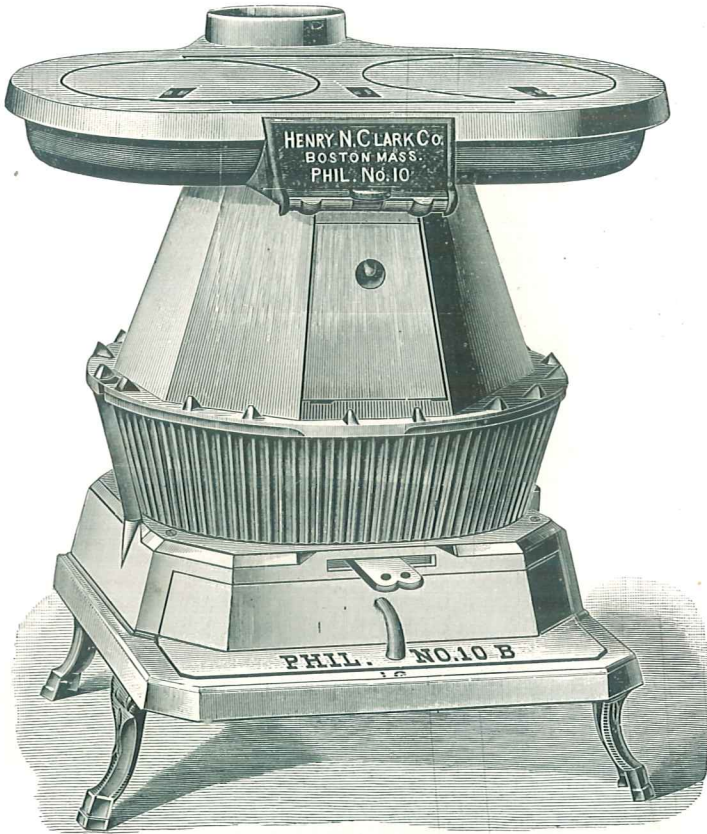
**T**HIS is a first-class Laundry at a low price. It heats 9 irons and has two holes for boiling purposes on top.

---

WRITE FOR TRADE DISCOUNT

PHIL. B. NO. 10

Heating Capacity  
9 Irons



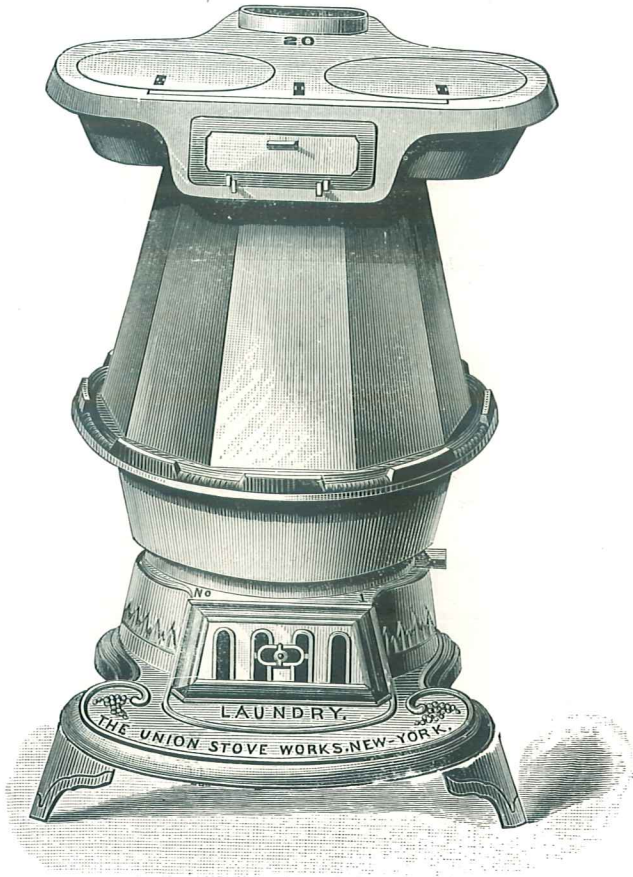
List Price . . . . . \$12.13

**T**HE Phil No. 10 has a deep bowl above the cone, the top plate of which is loose for cleaning, similar to the pearl, and a square base, with wide opening to the ash pit, which will be found convenient in removing the ashes. It has a draw center grate that can be removed without disturbing the bricks.

WRITE FOR TRADE DISCOUNT

LAUNDRY

Oval Top



	No. 10	No. 20	No. 30
Heating Capacity . . . . .	8 irons	10 irons	9 irons
Boiler Holes . . . . .	2 8-inch	2 9-inch	2 9-inch
Height of Flat-iron Surface . . . . .	8½ inches	9¼ inches	11½ inches
List Prices . . . . .	\$12.71	\$16.20	\$18.51

WRITE FOR TRADE DISCOUNT



LAUNDRY

Round Top

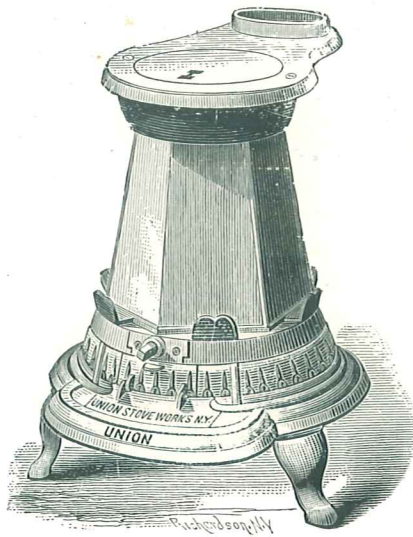


	No. 1	No. 2
Heating Capacity . . . . .	8 irons	10 irons
Height of Flat-iron Surface . . . . .	8 inches	9 inches
List Prices . . . . .	\$12.13	\$15.62

WRITE FOR TRADE DISCOUNT

**UNION  
LUNDRY**

No. 1  
One 8-inch Hole



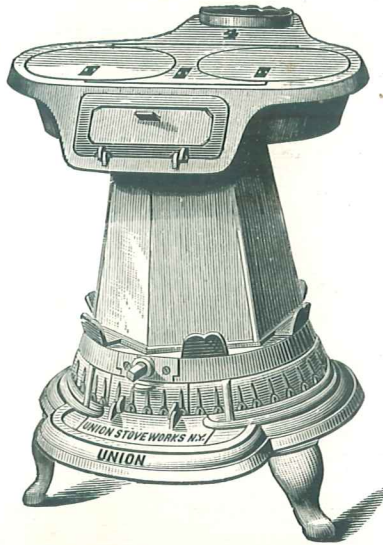
Heating Capacity . . . . . 6 irons  
Height of Flat-iron Surface . . . . . 7½ inches  
List Price . . . . . \$6.56

---

WRITE FOR TRADE DISCOUNT

UNION  
LAUNDRY

Nos. 2, 3 and 4

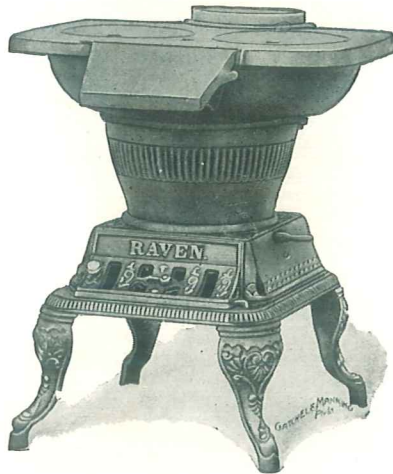


	No. 2	No. 3	No. 4
Heating Capacity . . . . .	6 irons	7 irons	7 irons
Boiler Holes . . . . .	2 6-inch	2 7-inch	2 8-inch
Height of Flat-iron Surface . . . . .	7½ inches	9½ inches	9½ inches
List Prices . . . . .	\$8.66	\$9.24	\$9.82

WRITE FOR TRADE DISCOUNT

**RAVEN  
LAUNDRY**

Two-Hole  
Laundry



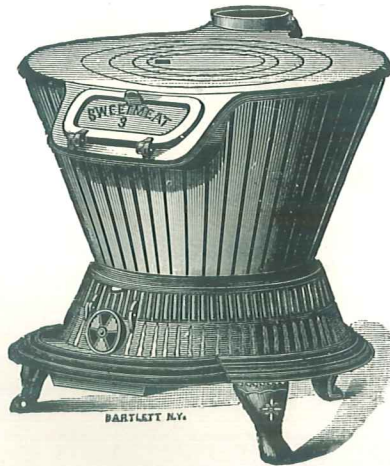
SIZES		List Prices
No. 7.	With 2 7-inch covers . . . . .	\$8.09
No. 18.	With 2 8-inch covers . . . . .	8.66
No. 8.	With 2 8-inch covers . . . . .	9.24

**T**HE above stove is suitable for laundry purposes, kitchens, or camp use. Has shaking and dumping grate.

WRITE FOR TRADE DISCOUNT

# SWEETMEAT

For Confectioners'  
or Laundry Use



SIZES

List Prices

No. 1 has 12-inch hole, with rings to reduce to 9-inch . . . . .	\$13.68
No. 2 has 14-inch hole, with rings to reduce to 9-inch . . . . .	16.84
No. 3 has 16-inch hole, with rings to reduce to 9-inch . . . . .	20.00

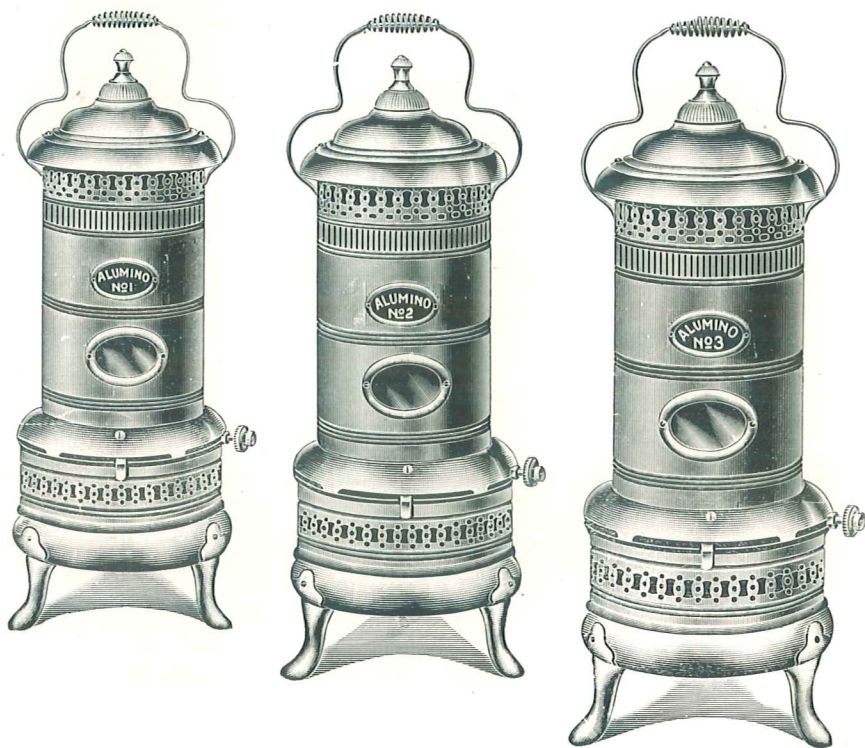
**T**HE Sweetmeat has a cast-iron body, well lined with heavy fire-brick. It is specially designed for Confectioners' use, but may also be use as a Laundry Stove, or for any purpose where a large boiler is needed. Grate and frame draw out through the ash pit door.

---

WRITE FOR TRADE DISCOUNT

# ALUMINUM OIL HEATER

The Lightest Stove  
on the Market  
Novelty Burner  
Absolutely Free from  
Smoke and Odor  
1908 Pattern with  
Smokeless Device



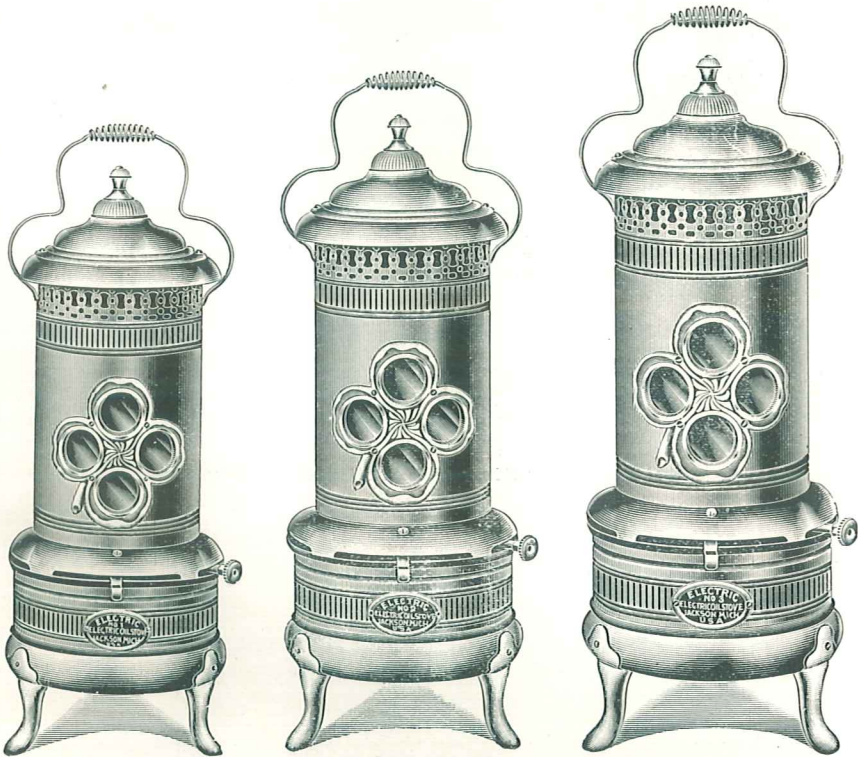
	SIZES	List Prices
No. 1.	8-inch Wick, 27 inches high . . . . .	\$ 5.26
No. 2.	10-inch Wick, 28 inches high . . . . .	6.84
No. 3.	15-inch Wick, 33 inches high . . . . .	10.00

**T**HESE stoves are made entirely of polished steel, brass, and aluminum. They are the largest and handsomest stoves ever offered for the money. Made with polished brass tanks and smokeless wick attachment. Best and lowest-priced heater made.

WRITE FOR TRADE DISCOUNT

# ELECTRIC OIL HEATER

The Lightest Stove  
on the Market  
Novelty Burner  
Absolutely Free from  
Smoke and Odor  
1908 Pattern with  
Smokeless Device



SIZES

List Prices

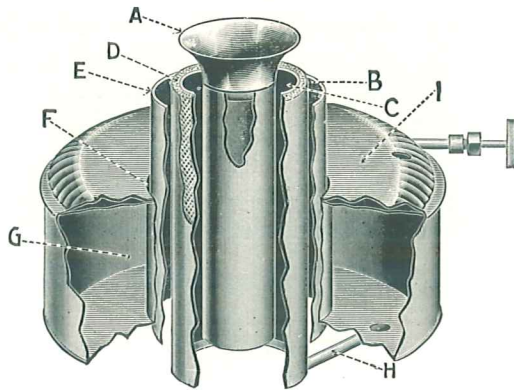
No. 1.	8-inch Wick, 27 inches high . . . . .	\$ 5.26
No. 2.	10-inch Wick, 28 inches high . . . . .	6.84
No. 3.	15-inch Wick, 33 inches high . . . . .	10.00

**T**HESE stoves are made entirely of polished steel, brass, and aluminum. They are the largest and handsomest stoves ever offered for the money. Made with polished brass tanks and smokeless wick attachment. The best and lowest-priced heater made.

WRITE FOR TRADE DISCOUNT

## NOVELTY BURNER

Used in Aluminum and  
Electric Oil Heaters



Note Construction of Novelty Safety Burner

Wick does not turn down into oil fount.  
Absolutely safe. Explosions impossible. No perforations about Flame Spreader  
to become clogged with oily substances.

A — Flame Spreader perfectly free from perforations.

B — Air Space outside of Wick Tube.

C — Air Space inside of Wick Tube.

D — Wick.

E — Outside Casing to Burner.

F — Air Space between Fount and Outside Casing.

G — Fount or receptacle for oil, entirely separate from burner.

H — Feed pipe conducting oil from Fount to Burner.

I — Shield resting on top of Fount, with Air Space underneath.

Dare you use a Stove wherein the Wick Turns Down  
Directly into the Oil Fount?

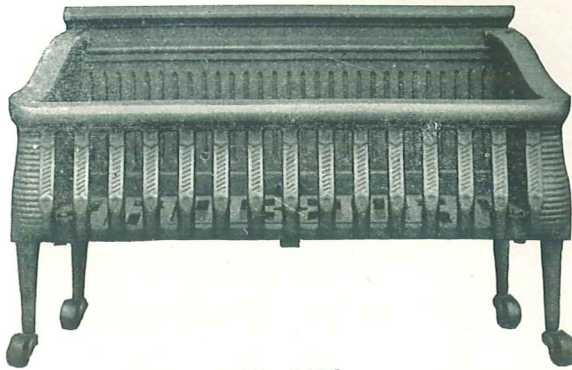
---

WRITE FOR TRADE DISCOUNT



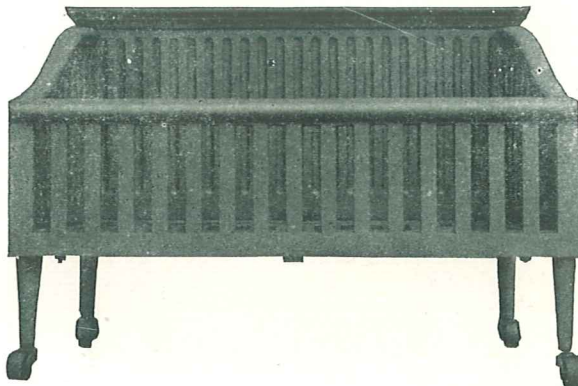
**PORTABLE  
BASKET  
GRATES**

On Casters with Dump  
Center Grates



**No. 1531**

No. of Basket	Width Across Front	Depth	Price of Grate Black Front
1531-18	18 inches	9½ inches	\$6.92
1531-20	20 inches	9½ inches	7.22
1531-22	22 inches	9½ inches	7.22
1531-24	24 inches	9½ inches	7.94



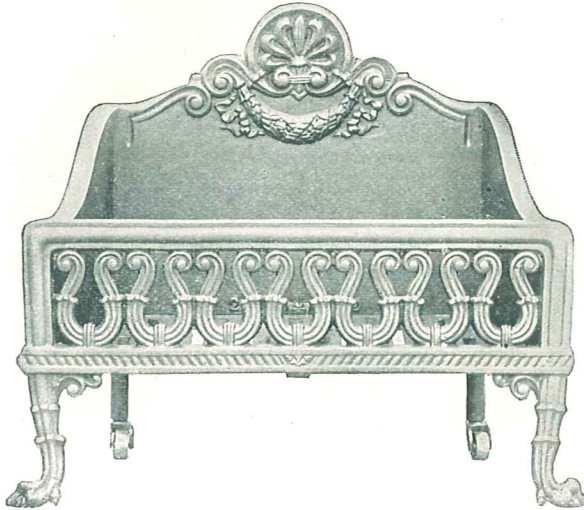
**No. 1535**

No. of Basket	Width Across Front	Depth	Price of Grate Black Front
1535-18	18 inches	12½ inches	\$6.92
1535-20	20 inches	12½ inches	7.22
1535-22	22 inches	12½ inches	7.22
1535-24	24 inches	12½ inches	7.94

WRITE FOR TRADE DISCOUNT

**PORTABLE  
BASKET  
GRATES**

On Casters with Dump  
Center Grates



No. 298

No. of Basket	Width Across Front	Width Across Back	Price
298-21 $\frac{3}{4}$	21 $\frac{3}{4}$ inches	18 inches	\$7.80
298-25 $\frac{1}{4}$	25 $\frac{1}{4}$ inches	20 $\frac{1}{2}$ inches	8.54

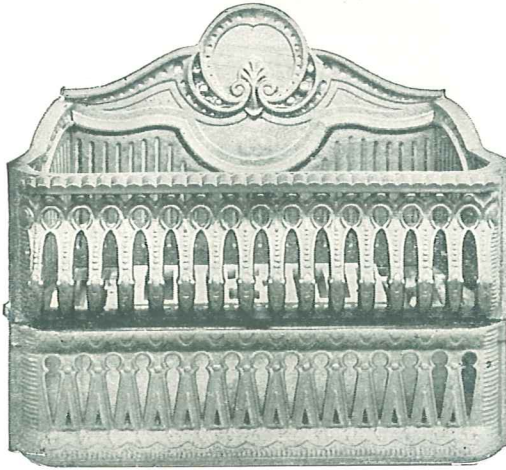


No. 237

No. of Basket	Width Across Front	Depth	Black Front
237	20 $\frac{1}{2}$ inches	14 $\frac{1}{2}$ inches	\$ 9.57
237	22 $\frac{3}{4}$ inches	14 $\frac{1}{2}$ inches	10.31
237	24 $\frac{3}{4}$ inches	14 $\frac{1}{2}$ inches	10.67

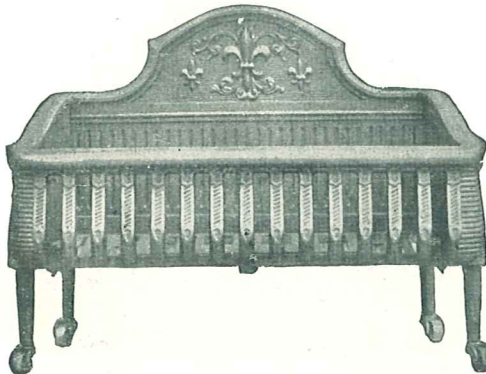
WRITE FOR TRADE DISCOUNT

PORTABLE BASKET GRATES



No. 1503

No. of Basket	Width Across Front	Depth	Price
1503-20½	21 inches	12¾ inches	\$8.10
1503-22¼	22¼ inches	12¾ inches	8.24
1503-24¼	24¼ inches	12¾ inches	9.22



No. 1504

No. of Basket	Width Across Front	Depth	Price
1504-20	20 inches	12½ inches	\$7.22
1504-22	22 inches	12½ inches	7.22
1504-24	24 inches	12½ inches	7.94

WRITE FOR TRADE DISCOUNT

**PORTABLE  
BASKET  
GRATES**

On Casters with Dump  
Center Grates



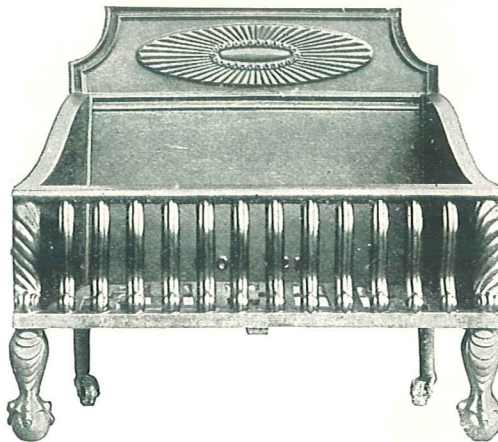
**No. 1507**

No. of Basket  
1507-24½

Width across front  
24½ inches

Depth  
12¾ inches

Price  
\$9.93



**No. 1505**

No. of Basket  
1505-18  
1505-21  
1505-24

Width across front  
18½ inches  
21½ "  
24½ "

Depth  
12½ inches  
12½ "  
12½ "

Price  
\$6.92  
7.22  
7.94

WRITE FOR TRADE DISCOUNT

# PORTABLE BASKET GRATES

On Casters with Dump  
Center Grates



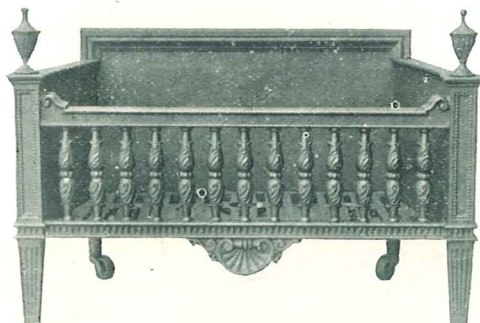
No. 1517

No. of Basket  
1517-24

Width Across Front  
24 inches

Depth  
13 inches

Price  
\$11.05



No. 1513

No. of Basket  
1513-24

Width Across Front  
24½ inches

Depth  
13 inches

Price  
\$11.48

---

WRITE FOR TRADE DISCOUNT

**PORTABLE  
BASKET  
GRATE**

On Casters with Dump  
Center Grate



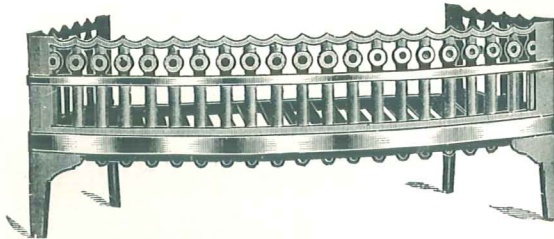
No. 1500

No. of Basket	Width Across Front	Width Across Back	Extreme Height	Price
1500	26½ inches	21¾ inches	18 inches	\$16.80

WRITE FOR TRADE DISCOUNT

**PORTABLE  
CHAIR  
GRATES**

Polished Front Panels  
Well Fitted and  
Smooth Castings

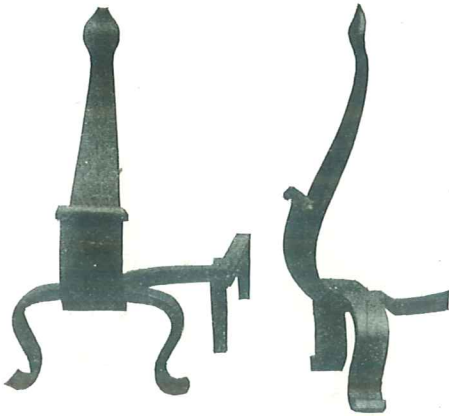


Width Across Front	Width Across Back	Height	Price
16 inches	7 $\frac{1}{4}$ inches	11 inches	\$2.60
18 inches	9 $\frac{1}{4}$ inches	11 inches	2.80
20 inches	11 $\frac{1}{4}$ inches	11 inches	3.00
22 inches	13 $\frac{1}{4}$ inches	11 inches	3.40
24 inches	15 $\frac{1}{4}$ inches	11 inches	3.80
26 inches	17 $\frac{1}{4}$ inches	11 inches	4.10
28 inches	19 $\frac{1}{2}$ inches	11 inches	4.40
30 inches	21 $\frac{1}{2}$ inches	11 inches	4.80

WRITE FOR TRADE DISCOUNT

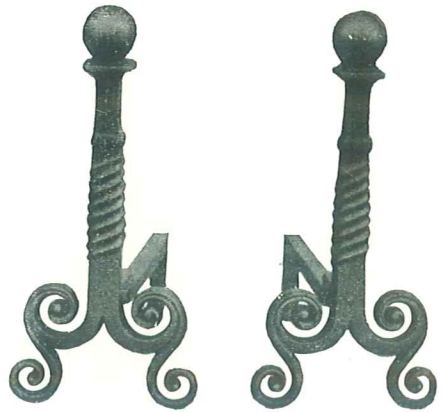
# Cast and Wrought Iron Andirons

WROUGHT IRON FINISH



No. 1909

Height, 20½ inches  
List, \$7.80



No. 537

Height, 18 inches  
List, \$5.31



No. 1706

Height, 24 inches  
List, \$8.84

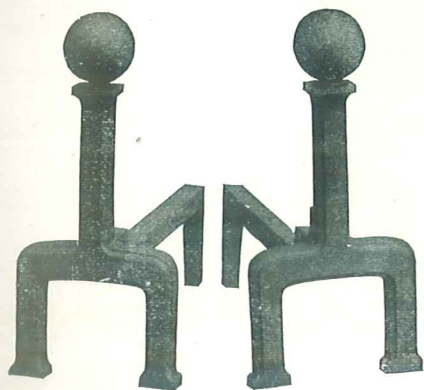
---

WRITE FOR TRADE DISCOUNT



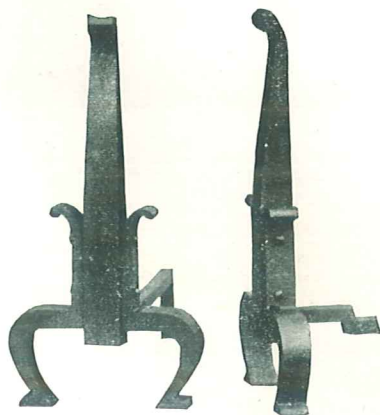
# Cast and Wrought Iron Andirons

WROUGHT IRON FINISH



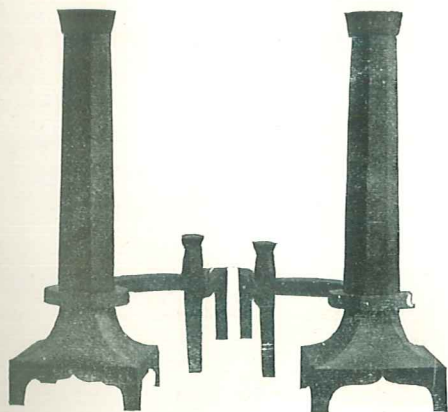
No. 1912

Height, 13 inches  
List, \$2.65



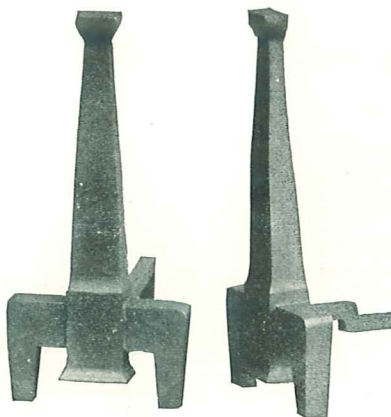
No. 1905

Height, 22 inches  
List, \$11.05



No. 1759

Height, 21½ inches  
List, \$11.79



No. 1907

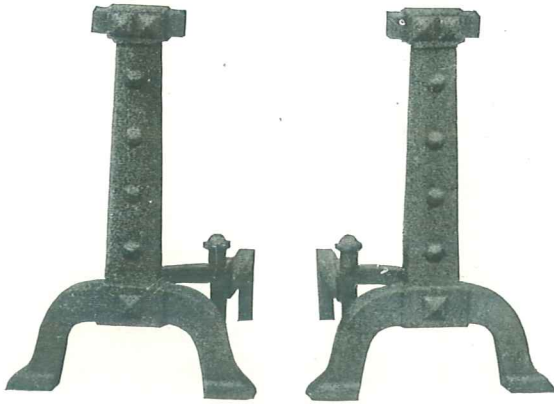
Height, 20 inches  
List, \$8.10

---

WRITE FOR TRADE DISCOUNT

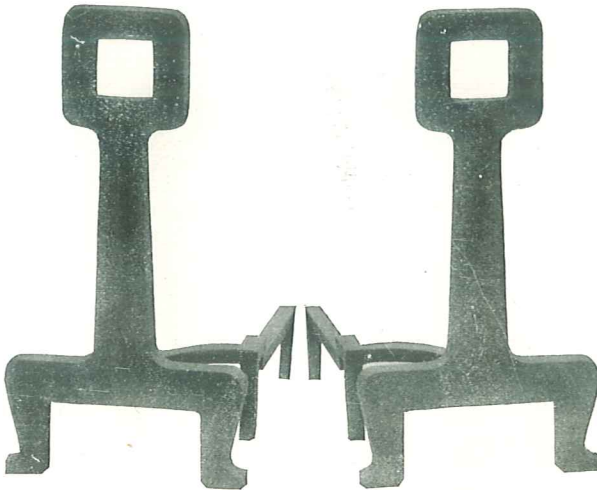
## Cast and Wrought Iron Andirons

WROUGHT IRON FINISH



No. 1900

Height, 18 inches  
List, \$6.63



No. 1910

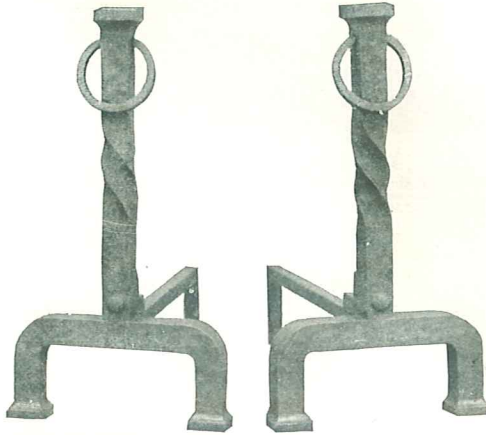
Height, 24 inches  
List, \$8.54

---

WRITE FOR TRADE DISCOUNT

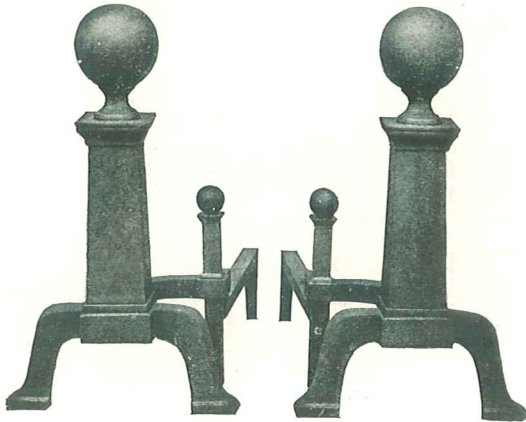
# Cast and Wrought Iron Andirons

WROUGHT IRON FINISH



No. 1754

Height 18 inches  
List \$5.31



No. 1709

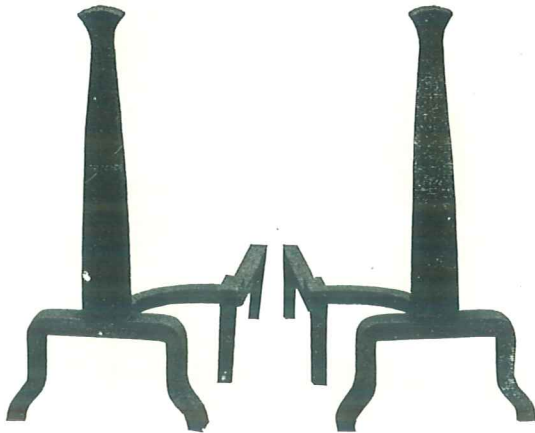
Height 19½ inches  
List \$11.79

---

WRITE FOR TRADE DISCOUNT

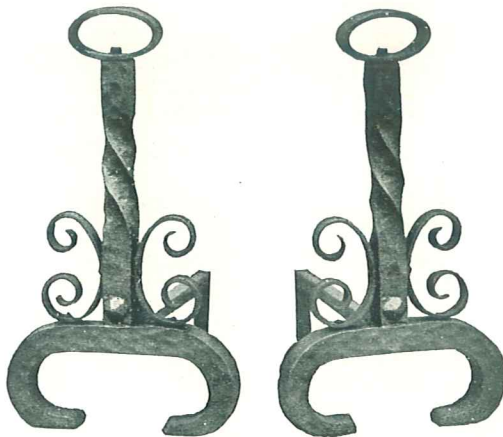
## Cast and Wrought Iron Andirons

WROUGHT IRON FINISH



No. 1911

Height 21 inches  
List \$5.60



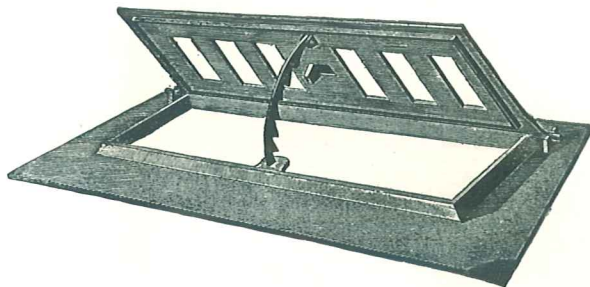
No. 1755

Height 18 inches  
List \$6.63

---

WRITE FOR TRADE DISCOUNT

## Fire Place Dampers



DIMENSIONS Extreme Size	List Prices
9 x 24 inches . . . . .	\$1.29
9 x 28 " . . . . .	1.46
9 x 30 " . . . . .	1.80
9 x 32 " . . . . .	2.06
9 x 36 " . . . . .	2.32
9 x 42 " . . . . .	2.90
9 x 48 " . . . . .	3.86

## Ash Dumps



DIMENSIONS	List Prices
Size 7 x 10 inches . . . . .	\$ 6.43
" 7 x 16 " . . . . .	10.00

WRITE FOR TRADE DISCOUNT

# Rochester Radiators

## Style "A," Price, \$8.00.

For use on ordinary-sized stoves, and for any fuel except soft coal.

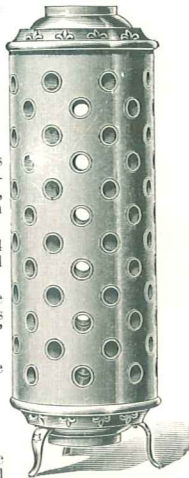
Material: American-Russia Iron, with highly ornamental nickeled cast iron top, base and legs.

Diameter, 12 in.; length, 34 in.; weight, 30 lbs.

Nos. 15 and 155 have 84 cross tubes. Nos. 16 and 17 have 96 cross tubes.

This is the most popular style for general use, and for size and price gives maximum results. Very artistic and ornamental.

- No. 15 for 5-in stove pipe  
 " 155 " 5½-in. " "  
 " 16 " 6-in. " "  
 " 17 " 7-in. " "



## Style "B."

Price, \$7.25.

Description same as style "A," except material. Best sheet steel, with Japanned cast iron top, base and legs.

Nos. 25 and 255 have 84 cross tubes. Nos. 26 and 27 have 96 cross tubes.

This Radiator, while as durable, and giving as good results as style "A" is plainer in finish.

- No. 25 for 5-in stove pipe  
 " 255 " 5½-in. " "  
 " 26 " 6-in. " "  
 " 27 " 7-in. " "

Order by number only

Styles A and B can be shortened to fit special conditions without extra charge.

## Style "E." Price, \$6.00.

For use on medium-sized stoves, and any fuel except soft coal.

Material: American-Russia iron, with highly ornamental nickeled cast-iron top, base and legs.

Diameter, 12 in.; length, 20 in.; weight, 20 lbs. Has 48 cross tubes.

- No. 015 for 5-in. stove pipe  
 " 0155 " 5½-in. " "  
 " 016 " 6-in. " "  
 " 017 " 7-in. " "



## Style "F."

Price, \$5.00.

Description same as style "E," except material. Best sheet steel, with Japanned cast iron top, base and legs.

- No. 025 for 5-in stove pipe  
 " 0255 " 5½-in. " "  
 " 026 " 6-in. " "  
 " 027 " 7-in. " "

Order by number only

## Style "C." Price, \$12.00.

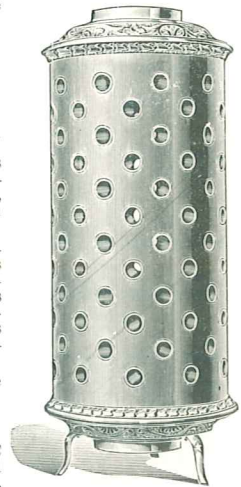
For use on furnaces, boilers and very large stoves using large smoke pipes, and with any fuel except soft coal.

Material: American-Russia iron with highly ornamental and artistic nickeled cast iron top, base and legs.

Diameter, 15 in.; length, 34 in.; weight, 50 lbs. Has 120 cross tubes.

This Radiator when placed on furnace pipe will throw out more heat than any register from same furnace.

- No. 46 for 6-in smoke pipe  
 " 47 " 7-in " "  
 " 48 " 8-in " "  
 " 49 " 9-in " "



## Style "D."

Price, \$10.50.

Description same as style "C," except material. Best sheet steel, with Japanned cast iron top, base and legs.

This Radiator is plainer than style "C," but as durable, and is intended to be used in places where it is not conspicuous and where results are desired and not ornament.

- No. 56 for 6-in smoke pipe  
 " 57 " 7-in. " "  
 " 58 " 8-in. " "  
 " 59 " 9-in. " "

We can make styles C and D to fit large sized pipe when necessary, without extra charge.

Style C and D can be shortened to fit special conditions without extra charge.

Order by number only

## Style "M."

Price \$2.00.

An excellent heater for the price, which is so low as to bring it within the reach of anyone.

Description the same as style "L," except material. Best sheet steel, with cast iron top and base.

- No. 1045 for 4½-in stove pipe  
 " 105 " 5-in " "  
 " 1055 " 5½ in " "  
 " 106 " 6-in " "  
 " 107 " 7-in " "

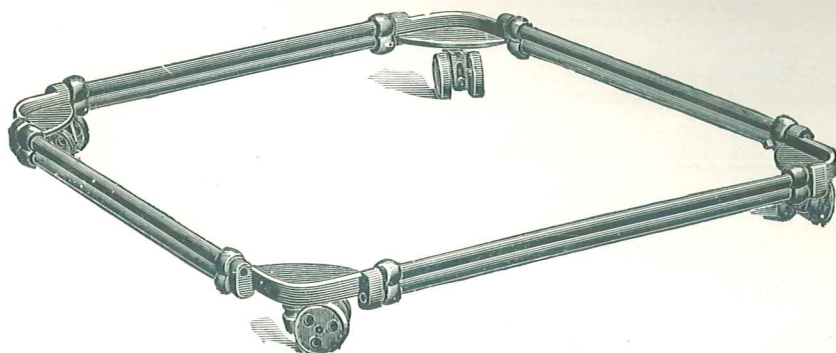
Order by number only



WRITE FOR TRADE DISCOUNT

## COMMON SENSE ADJUSTABLE STOVE TRUCK

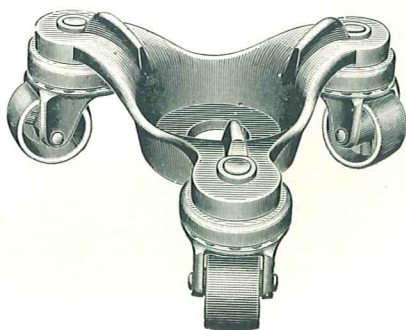
Mounted on  
Double Wheel Casters  
The Only Truck in the  
Market made of Malleable  
and Wrought Iron



Standard Size: No. 7 opens from 17 x 22 to 28 x 38 inches. Per Doz. . . . \$36.00

List Price

## GEM AND RUGBY STOVE CASTER'S

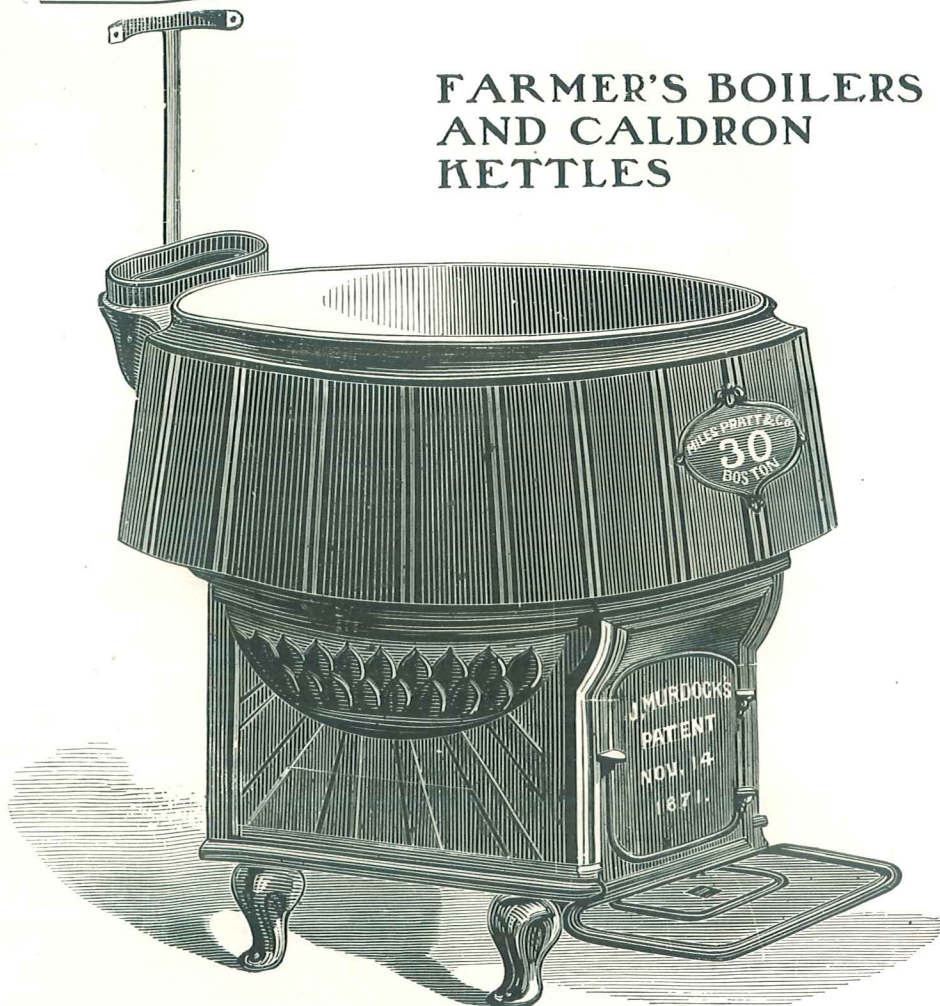


Gem Roller Bearing; best made; four in a set. Per set . . . . . \$1.90  
 Rugby without roller bearing; four in a set. Per set . . . . . 1.23

List Price

WRITE FOR TRADE DISCOUNT

## FARMER'S BOILERS AND CALDRON KETTLES



Capacity	For Wood	For Coal	Caldrons	Covers
15 gal. . . . .	\$13.00		\$ 4.00	\$1.75
20 gal. . . . .	16.00		5.00	2.25
25 gal. . . . .	20.00		6.00	3.50
30 gal. . . . .	25.00	\$34.00	7.00	5.00
40 gal. . . . .	30.00	40.00	10.00	5.75
50 gal. . . . .	40.00		13 00	6.75
65 gal. . . . .	50.00		16.00	8.00
80 gal. . . . .			23 00	
100 gal. . . . .			28.00	
120 gal. . . . .			35.00	
160 gal. . . . .			56 00	
200 gal. . . . .			80.00	
250 gal. . . . .			100.00	

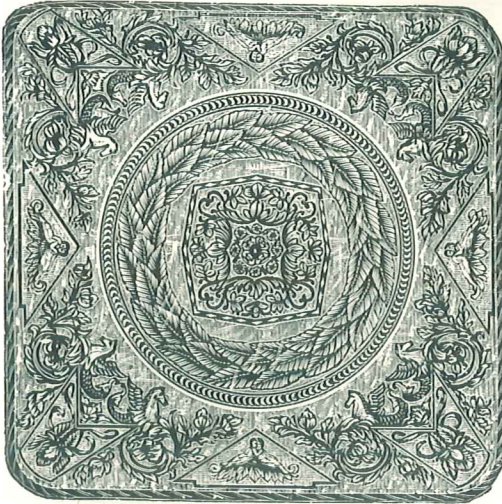
**C**OVERS are not included in price of boilers. Separate Caldrons can be furnished with Trunnions, if desired.

WRITE FOR TRADE DISCOUNT



## STOVE BOARDS

Send for  
Special Catalogue



We are the Agents for the

## AMERICAN STOVE BOARD COMPANY

AND HAVE IN STOCK A FULL LINE OF THE LATEST PATTERNS IN CRYSTALLIZED, FLORENTINE, EMBOSSED, ALUMINUM, AND ZINC BOARDS, WITH WOOD OR PAPER BACKS, WE ALSO HAVE A STOCK OF **MOSAIC** AND **NEW PERFECTION** BOARDS. ✿ WE CAN FILL YOUR ORDERS PROMPTLY AT THE VERY **LOWEST** MARKET PRICES. ✿ SEE FOLLOWING PAGES FOR LIST PRICES ✿ ✿

---

WRITE FOR TRADE DISCOUNT

## List Prices for American Stove Boards for 1908

### Wood Lined Crystal and Florentine Enameled

#### SQUARE, WOOD-LINED

Inches	24 x 24	26 x 26	28 x 28	30 x 30	33 x 33	36 x 36
Per doz.	\$13.20	\$15.00	\$18.00	\$19.80	\$25.80	\$32.40
Weight, per doz.	95 lbs.	112 lbs.	124 lbs.	148 lbs.	172 lbs.	204 lbs.

#### OBLONG, WOOD-LINED

Inches	24 x 36	26 x 32	28 x 34	30 x 38	32 x 42
Per Doz.	\$16.80	\$18.60	\$21.00	\$24.00	\$28.80
Weight, per doz.	138 lbs.	134 lbs.	154 lbs.	182 lbs.	206 lbs.

Packed one-half dozen in a tight case.

### Paper Lined Crystal and Florentine Enameled

#### SQUARE, PAPER-LINED

Inches	18 x 18	24 x 24	26 x 26	28 x 28	30 x 30	32 x 32	34 x 34	36 x 36
Per doz.	\$7.80	\$9.00	\$9.84	\$10.92	\$12.96	\$14.76	\$16.80	\$20.40
Weight, per doz.	20 lbs.	33 lbs.	40 lbs.	45 lbs.	50 lbs.	58 lbs.	65 lbs.	70 lbs.

#### OBLONG, PAPER-LINED

Inches	18 x 24	18 x 30	24 x 36	26 x 30	28 x 32	30 x 36	32 x 42
Per doz.	\$8.76	\$9.00	\$12.60	\$12.60	\$14.40	\$16.80	\$20.76
Weight, per doz.	24 lbs.	30 lbs.	49 lbs.	44 lbs.	52 lbs.	60 lbs.	75 lbs.

Packed one dozen in a tight case. Paper-lined Crystal Boards are marked according to the size of the blanks from which they are made.

### Wood Lined Aluminum

#### SQUARE, WOOD-LINED, ALUMINUM

Inches	24 x 24	26 x 26	28 x 28	30 x 30	33 x 33	36 x 36
Per doz.	\$13.20	\$15.00	\$18.00	\$19.80	\$25.80	\$32.40
Weight, per doz.	95 lbs.	112 lbs.	124 lbs.	148 lbs.	172 lbs.	204 lbs.

#### OBLONG, WOOD-LINED, ALUMINUM

Inches	24 x 36	26 x 32	28 x 34	30 x 38	32 x 42
Per doz.	\$16.80	\$18.60	\$21.00	\$24.00	\$28.80
Weight, per doz.	138 lbs.	134 lbs.	154 lbs.	182 lbs.	206 lbs.

Packed one-half dozen in a tight case.

WRITE FOR TRADE DISCOUNT

# List Prices for American Stove Boards for 1908

## Paper Lined Aluminum

### SQUARE, PAPER-LINED ALUMINUM

Inches	24 x 24	26 x 26	28 x 28	30 x 30	32 x 32	34 x 34	36 x 36
Per doz.	\$9.00	\$9.84	\$10.92	\$12.96	\$14.76	\$16.80	\$20.40
Weight, per doz.	33 lbs.	40 lbs.	45 lbs.	50 lbs.	58 lbs.	65 lbs.	70 lbs.

### OBLONG, PAPER-LINED ALUMINUM

Inches	24 x 36	26 x 30	28 x 32	30 x 36	32 x 42
Per doz.	\$12.60	\$12.60	\$14.40	\$16.80	\$20.76
Weight, per doz.	49 lbs.	44 lbs.	52 lbs.	60 lbs.	75 lbs.

Packed one dozen in a tight case. Paper-lined Aluminum Boards are marked according to the size of the blanks from which they are made.

## Wood Lined Embossed

### SQUARE WOOD-LINED, EMBOSSED

Inches	26 x 26	28 x 28	30 x 30	33 x 33	36 x 36
Per doz.	\$15.00	\$18.00	\$19.80	\$25.80	\$32.40
Weight, per doz.	112 lbs.	124 lbs.	148 lbs.	172 lbs.	204 lbs.

### OBLONG, WOOD-LINED, EMBOSSED

Inches	24 x 36	26 x 32	28 x 34	30 x 38	32 x 42
Per doz.	\$16.80	\$18.60	\$21.00	\$24.00	\$28.80
Weight, per doz.	138 lbs.	134 lbs.	154 lbs.	182 lbs.	206 lbs.

Packed one-half dozen in a tight case.

## Paper Lined Embossed

### ROUND, PAPER-LINED, EMBOSSED

Inches	24	26	28	30	32	34	36
Per Doz.	\$8.04	\$9.00	\$10.08	\$11.28	\$12.96	\$14.52	\$18.00
Weight, per doz.	27 lbs.	33 lbs.	39 lbs.	42 lbs.	48 lbs.	54 lbs.	61 lbs.

### SQUARE, PAPER-LINED, EMBOSSED

Inches	18 x 18	24 x 24	26 x 26	28 x 28	30 x 30	32 x 32	34 x 34	36 x 36
Per doz.	\$6.96	\$8.04	\$9.00	\$10.08	\$11.28	\$12.96	\$14.52	\$18.00
Weight, per doz.	20 lbs.	33 lbs.	40 lbs.	45 lbs.	50 lbs.	58 lbs.	65 lbs.	70 lbs.

### OBLONG, PAPER LINED, EMBOSSED

Inches	18 x 24	24 x 36	26 x 30	28 x 32	30 x 36	32 x 42
Per doz.	\$7.80	\$11.64	\$11.64	\$12.60	\$14.40	\$18.00
Weight, per doz.	24 lbs.	49 lbs.	44 lbs.	52 lbs.	60 lbs.	75 lbs.

Packed one dozen in a tight case. Paper-Lined Embossed Boards are marked according to the size of the blanks from which they are made.

# List Prices for Belding's Stove Boards for 1908

## MOSAIC ENAMELED STOVE BOARDS

### Wood Lined

SIZE	SQUARE	PRICE PER DOZ.	WEIGHT PER DOZ.
26 x 26		\$15.00	112 lbs.
28 x 28		18.00	124 "
30 x 30		19.80	148 "
33 x 33		25.80	172 "
36 x 36		32.40	204 "
	<b>OBLONG</b>		
24 x 36		16.80	138 "
26 x 32		18.60	134 "
28 x 34		21.00	154 "
30 x 38		24.00	182 "
32 x 42		28.80	206 "

Packed one-half dozen in a Case

### Paper Lined

SIZE	SQUARE	PRICE PER DOZ.	WEIGHT PER DOZ.
18 x 18		\$ 7.80	20 lbs.
24 x 24		9.00	33 "
26 x 26		9.84	40 "
28 x 28		10.92	45 "
30 x 30		12.96	50 "
32 x 32		14.76	58 "
35 x 35		19.80	70 "
	<b>OBLONG</b>		
18 x 22		8.76	22 "
24 x 36		12.60	47 "
26 x 30		12.60	44 "
28 x 34		14.40	56 "
30 x 36		16.80	60 "
32 x 40		20.76	70 "

Packed one dozen in a Case

### Paper Lined

SIZE	SQUARE	PRICE PER DOZ.	WEIGHT PER DOZ.
24 x 24		9.00	33 lbs.
26 x 26		9.84	40 "
28 x 28		10.92	45 "
30 x 30		12.96	50 "
32 x 32		14.76	58 "
35 x 35		19.80	70 "
	<b>OBLONG</b>		
24 x 36		12.60	47 "
26 x 30		12.60	44 "
28 x 34		14.40	56 "
30 x 36		16.80	60 "
32 x 40		20.76	70 "

Packed one dozen in a case

WRITE FOR TRADE DISCOUNT

